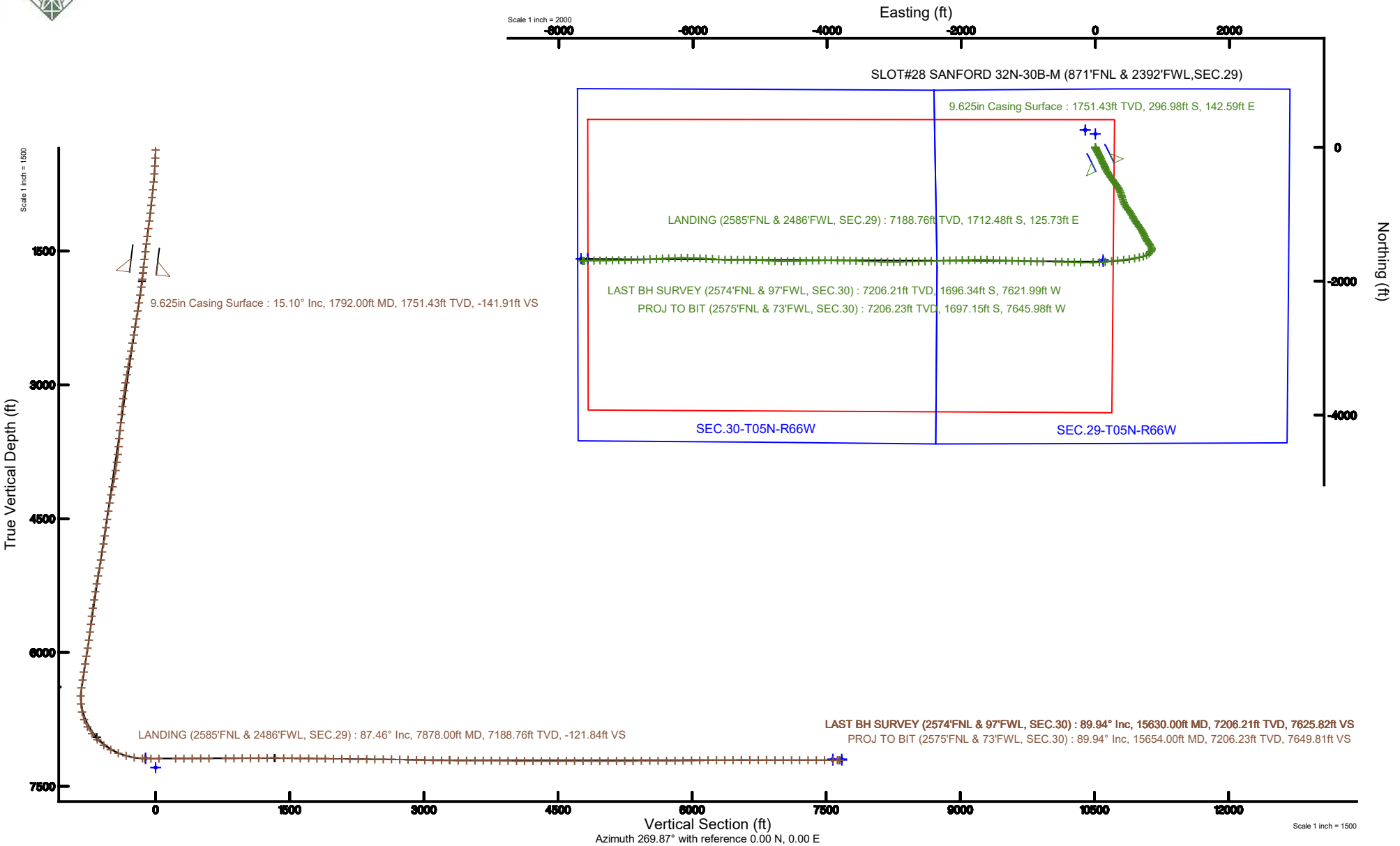


SRC ENERGY

Location: COLORADO Slot: SLOT#28 SANFORD 32N-30B-M (871'FNL & 2392'FWL, SEC.29)
Field: WELD COUNTY (NAD83, TRUE NORTH) Well: SANFORD 32N-30B-M
Facility: SEC.29-T05N-R66W Wellbore: SANFORD 32N-30B-M PWB

Plot reference wellpath is SANFORD 32N-30B-M (REV-B.0) PWP	Grid System: NAD83 / Lambert Colorado SP, Northern Zone (501), US feet
True vertical depths are referenced to PRECISION 462 (20') (RKB)	North Reference: True north
Measured depths are referenced to PRECISION 462 (20') (RKB)	Scale: True distance
PRECISION 462 (20') (RKB) to Mean Sea Level: 4924 feet	Depths are in feet
Mean Sea Level to Mud line (At Slot: SLOT#28 SANFORD 32N-30B-M (871'FNL & 2392'FWL, SEC.29)): 0 feet	Created by: doddanna on 2019-06-18
Coordinates are in feet referenced to Slot	Database: WellArchitectDB





Actual Wellpath Report

SANFORD 32N-30B-M AWP

Page 1 of 9



REFERENCE WELLPATH IDENTIFICATION

Operator	SRC ENERGY	Slot	SLOT#28 SANFORD 32N-30B-M (871'FNL & 2392'FWL,SEC.29)
Area	COLORADO	Well	SANFORD 32N-30B-M
Field	WELD COUNTY (NAD83,TRUE NORTH)	Wellbore	SANFORD 32N-30B-M AWB
Facility	SEC.29-T05N-R66W		

REPORT SETUP INFORMATION

Projection System	NAD83 / Lambert Colorado SP, Northern Zone (501), US feet	Software System	WellArchitect® 5.1
North Reference	True	User	Doddanna
Scale	0.999959	Report Generated	6/18/2019 at 2:47:40 PM
Convergence at slot	0.45° East	Database/Source file	WellArchitectDB/SANFORD_32N-30B-M_AWP.xml

WELLPATH LOCATION

	Local coordinates		Grid coordinates		Geographic coordinates	
	North[ft]	East[ft]	Easting[US ft]	Northing[US ft]	Latitude	Longitude
Slot Location	-259.02	151.57	3193808.58	1380345.79	40°22'31.310"N	104°48'15.732"W
Facility Reference Pt			3193654.99	1380603.61	40°22'33.870"N	104°48'17.690"W
Field Reference Pt			3171284.48	1426358.81	40°30'07.643"N	104°53'02.634"W

WELLPATH DATUM

Calculation method	Minimum curvature	PRECISION 462 (20') (RKB) to Facility Vertical Datum	4924.00ft
Horizontal Reference Pt	Slot	PRECISION 462 (20') (RKB) to Mean Sea Level	4924.00ft
Vertical Reference Pt	PRECISION 462 (20') (RKB)	PRECISION 462 (20') (RKB) to Mud Line at Slot (SLOT#28 SANFORD 32N-30B-M (871'FNL & 2392'FWL,SEC.29))	4924.00ft
MD Reference Pt	PRECISION 462 (20') (RKB)	Section Origin	N 0.00, E 0.00 ft
Field Vertical Reference	Mean Sea Level	Section Azimuth	269.87°



SRC ENERGY

Actual Wellpath Report

SANFORD 32N-30B-M AWP

Page 2 of 9

BAKER
HUGHES

REFERENCE WELLPATH IDENTIFICATION

Operator	SRC ENERGY	Slot	SLOT#28 SANFORD 32N-30B-M (871'FNL & 2392'FWL,SEC.29)
Area	COLORADO	Well	SANFORD 32N-30B-M
Field	WELD COUNTY (NAD83,TRUE NORTH)	Wellbore	SANFORD 32N-30B-M AWB
Facility	SEC.29-T05N-R66W		

WELLPATH DATA (171 stations) † = interpolated/extrapolated station

MD [ft]	Inclination [°]	Azimuth [°]	TVD [ft]	Vert Sect [ft]	North [ft]	East [ft]	Latitude	Longitude	DLS [°/100ft]	Comments
0.00†	0.000	241.300	0.00	0.00	0.00	0.00	40°22'31.310"N	104°48'15.732"W	0.00	
20.00	0.000	241.300	20.00	0.00	0.00	0.00	40°22'31.310"N	104°48'15.732"W	0.00	
103.00	0.530	241.300	103.00	0.34	-0.18	-0.34	40°22'31.309"N	104°48'15.736"W	0.64	
193.00	0.370	156.380	193.00	0.59	-0.65	-0.59	40°22'31.304"N	104°48'15.740"W	0.69	
278.00	1.050	155.710	277.99	0.16	-1.61	-0.16	40°22'31.294"N	104°48'15.734"W	0.80	
370.00	3.040	166.360	369.93	-0.76	-4.75	0.77	40°22'31.263"N	104°48'15.722"W	2.19	
460.00	5.730	158.530	459.66	-2.95	-11.25	2.97	40°22'31.199"N	104°48'15.694"W	3.06	
550.00	8.220	151.650	548.98	-7.63	-21.10	7.68	40°22'31.102"N	104°48'15.633"W	2.91	
640.00	9.850	153.680	637.86	-14.07	-33.66	14.14	40°22'30.978"N	104°48'15.549"W	1.85	
730.00	11.660	150.740	726.28	-21.89	-48.50	22.00	40°22'30.831"N	104°48'15.448"W	2.10	
820.00	12.690	153.480	814.26	-30.71	-65.28	30.86	40°22'30.665"N	104°48'15.333"W	1.31	
910.00	14.200	154.060	901.79	-39.91	-84.05	40.11	40°22'30.480"N	104°48'15.214"W	1.68	
1000.00	14.230	155.060	989.03	-49.36	-104.01	49.60	40°22'30.283"N	104°48'15.091"W	0.27	
1090.00	14.600	151.860	1076.20	-59.33	-124.04	59.61	40°22'30.085"N	104°48'14.962"W	0.98	
1180.00	15.400	151.810	1163.13	-70.28	-144.57	70.61	40°22'29.882"N	104°48'14.820"W	0.89	
1270.00	15.810	154.400	1249.82	-81.17	-166.16	81.55	40°22'29.668"N	104°48'14.678"W	0.90	
1360.00	16.550	154.090	1336.25	-92.02	-188.75	92.45	40°22'29.445"N	104°48'14.537"W	0.83	
1450.00	16.890	154.230	1422.44	-103.25	-212.05	103.73	40°22'29.215"N	104°48'14.392"W	0.38	
1540.00	16.400	155.640	1508.67	-114.13	-235.40	114.66	40°22'28.984"N	104°48'14.251"W	0.71	
1630.00	15.490	155.000	1595.21	-124.39	-257.87	124.98	40°22'28.762"N	104°48'14.117"W	1.03	
1720.00	15.380	156.650	1681.96	-134.15	-279.72	134.79	40°22'28.546"N	104°48'13.990"W	0.50	
1785.00	15.150	154.850	1744.67	-141.14	-295.32	141.82	40°22'28.392"N	104°48'13.900"W	0.81	
1859.00	14.630	156.880	1816.19	-148.88	-312.67	149.59	40°22'28.221"N	104°48'13.799"W	1.00	
1952.00	16.290	153.990	1905.82	-159.17	-335.20	159.93	40°22'27.998"N	104°48'13.666"W	1.97	
2045.00	16.530	150.280	1995.03	-171.39	-358.41	172.21	40°22'27.769"N	104°48'13.507"W	1.16	
2137.00	16.390	147.610	2083.27	-184.78	-380.74	185.65	40°22'27.548"N	104°48'13.333"W	0.84	
2231.00	16.600	145.910	2173.40	-199.36	-403.05	200.28	40°22'27.328"N	104°48'13.144"W	0.56	
2325.00	16.400	145.670	2263.53	-214.32	-425.13	215.29	40°22'27.109"N	104°48'12.950"W	0.22	
2418.00	16.390	146.400	2352.74	-228.94	-446.90	229.95	40°22'26.894"N	104°48'12.761"W	0.22	
2512.00	16.430	144.780	2442.92	-243.89	-468.81	244.96	40°22'26.678"N	104°48'12.567"W	0.49	



SRC ENERGY

Actual Wellpath Report

SANFORD 32N-30B-M AWP

Page 3 of 9

**BAKER
HUGHES****REFERENCE WELLPATH IDENTIFICATION**

Operator	SRC ENERGY	Slot	SLOT#28 SANFORD 32N-30B-M (871'FNL & 2392'FWL,SEC.29)
Area	COLORADO	Well	SANFORD 32N-30B-M
Field	WELD COUNTY (NAD83,TRUE NORTH)	Wellbore	SANFORD 32N-30B-M AWB
Facility	SEC.29-T05N-R66W		

WELLPATH DATA (171 stations)

MD [ft]	Inclination [°]	Azimuth [°]	TVD [ft]	Vert Sect [ft]	North [ft]	East [ft]	Latitude	Longitude	DLS [°/100ft]	Comments
2605.00	16.430	144.090	2532.12	-259.15	-490.21	260.26	40°22'26.466"N	104°48'12.369"W	0.21	
2699.00	17.070	142.910	2622.13	-275.21	-511.98	276.38	40°22'26.251"N	104°48'12.161"W	0.77	
2792.00	17.210	144.170	2711.00	-291.45	-534.02	292.66	40°22'26.033"N	104°48'11.951"W	0.43	
2884.00	16.950	144.580	2798.94	-307.14	-555.99	308.40	40°22'25.816"N	104°48'11.747"W	0.31	
2977.00	17.060	143.850	2887.88	-322.99	-578.05	324.30	40°22'25.598"N	104°48'11.542"W	0.26	
3070.00	16.630	148.590	2976.89	-337.93	-600.42	339.29	40°22'25.377"N	104°48'11.348"W	1.55	
3163.00	16.950	153.090	3065.93	-350.94	-623.87	352.36	40°22'25.145"N	104°48'11.179"W	1.44	
3256.00	17.160	156.520	3154.84	-362.49	-648.54	363.96	40°22'24.902"N	104°48'11.029"W	1.10	
3349.00	16.930	159.450	3243.76	-372.65	-673.81	374.18	40°22'24.652"N	104°48'10.897"W	0.96	
3442.00	16.900	161.030	3332.74	-381.74	-699.27	383.33	40°22'24.400"N	104°48'10.779"W	0.50	
3538.00	17.000	163.050	3424.57	-390.31	-725.89	391.96	40°22'24.137"N	104°48'10.668"W	0.62	
3631.00	16.770	162.660	3513.56	-398.21	-751.70	399.92	40°22'23.882"N	104°48'10.565"W	0.28	
3724.00	16.280	163.100	3602.71	-405.94	-776.98	407.71	40°22'23.632"N	104°48'10.464"W	0.54	
3818.00	16.720	161.900	3692.84	-413.92	-802.44	415.74	40°22'23.381"N	104°48'10.361"W	0.59	
3910.00	17.000	157.970	3780.89	-423.02	-827.49	424.89	40°22'23.133"N	104°48'10.242"W	1.28	
4002.00	17.130	153.440	3868.85	-434.06	-852.07	436.00	40°22'22.890"N	104°48'10.099"W	1.45	
4098.00	17.230	149.340	3960.57	-447.58	-876.95	449.57	40°22'22.645"N	104°48'09.923"W	1.27	
4194.00	17.270	142.600	4052.26	-463.43	-900.51	465.48	40°22'22.412"N	104°48'09.718"W	2.08	
4288.00	17.070	139.780	4142.07	-480.77	-922.12	482.86	40°22'22.198"N	104°48'09.493"W	0.91	
4383.00	16.560	143.360	4233.01	-497.80	-943.64	499.94	40°22'21.986"N	104°48'09.273"W	1.21	
4480.00	16.850	147.530	4325.92	-513.55	-966.59	515.74	40°22'21.759"N	104°48'09.069"W	1.27	
4575.00	16.840	149.210	4416.84	-527.93	-990.03	530.18	40°22'21.527"N	104°48'08.882"W	0.51	
4671.00	17.110	151.470	4508.66	-541.74	-1014.38	544.04	40°22'21.287"N	104°48'08.703"W	0.74	
4768.00	16.980	152.160	4601.40	-555.11	-1039.44	557.47	40°22'21.039"N	104°48'08.529"W	0.25	
4863.00	17.110	151.290	4692.23	-568.25	-1063.96	570.66	40°22'20.797"N	104°48'08.359"W	0.30	
4958.00	16.870	147.210	4783.09	-582.37	-1087.81	584.84	40°22'20.561"N	104°48'08.176"W	1.28	
5052.00	16.460	144.960	4873.14	-597.35	-1110.18	599.87	40°22'20.340"N	104°48'07.982"W	0.81	
5146.00	16.780	145.220	4963.21	-612.69	-1132.23	615.26	40°22'20.122"N	104°48'07.783"W	0.35	
5239.00	16.750	144.560	5052.26	-628.07	-1154.17	630.69	40°22'19.905"N	104°48'07.583"W	0.21	
5332.00	16.740	144.360	5141.31	-643.59	-1175.97	646.26	40°22'19.690"N	104°48'07.382"W	0.06	



SRC ENERGY

Actual Wellpath Report

SANFORD 32N-30B-M AWP

Page 4 of 9



REFERENCE WELLPATH IDENTIFICATION

Operator	SRC ENERGY	Slot	SLOT#28 SANFORD 32N-30B-M (871'FNL & 2392'FWL, SEC.29)
Area	COLORADO	Well	SANFORD 32N-30B-M
Field	WELD COUNTY (NAD83, TRUE NORTH)	Wellbore	SANFORD 32N-30B-M AWB
Facility	SEC.29-T05N-R66W		

WELLPATH DATA (171 stations) † = interpolated/extrapolated station

MD [ft]	Inclination [°]	Azimuth [°]	TVD [ft]	Vert Sect [ft]	North [ft]	East [ft]	Latitude	Longitude	DLS [°/100ft]	Comments
5425.00	16.680	144.920	5230.39	-659.02	-1197.78	661.74	40°22'19.474"N	104°48'07.182"W	0.18	
5518.00	16.730	147.340	5319.46	-673.86	-1219.97	676.63	40°22'19.255"N	104°48'06.990"W	0.75	
5614.00	16.690	148.640	5411.41	-688.44	-1243.38	691.26	40°22'19.024"N	104°48'06.801"W	0.39	
5709.00	16.430	150.630	5502.47	-702.08	-1266.74	704.95	40°22'18.793"N	104°48'06.624"W	0.66	
5804.00	15.770	155.150	5593.75	-714.04	-1290.16	716.97	40°22'18.561"N	104°48'06.469"W	1.49	
5898.00	16.630	158.380	5684.02	-724.31	-1314.26	727.29	40°22'18.323"N	104°48'06.335"W	1.32	
5990.00	16.700	153.160	5772.16	-735.07	-1338.29	738.11	40°22'18.086"N	104°48'06.196"W	1.63	
6083.00	15.870	150.660	5861.43	-747.28	-1361.30	750.37	40°22'17.858"N	104°48'06.037"W	1.17	
6176.00	15.240	147.040	5951.02	-760.12	-1382.64	763.26	40°22'17.647"N	104°48'05.871"W	1.24	
6269.00	15.970	146.890	6040.59	-773.71	-1403.61	776.89	40°22'17.440"N	104°48'05.695"W	0.79	
6362.00	17.000	146.520	6129.77	-788.15	-1425.67	791.38	40°22'17.222"N	104°48'05.507"W	1.11	
6455.00	16.860	147.010	6218.74	-802.94	-1448.32	806.23	40°22'16.998"N	104°48'05.316"W	0.21	
6548.00	16.570	148.980	6307.81	-817.06	-1471.00	820.40	40°22'16.774"N	104°48'05.132"W	0.68	
6641.00	16.830	150.440	6396.89	-830.49	-1494.07	833.88	40°22'16.546"N	104°48'04.958"W	0.53	
6735.00	14.430	174.430	6487.50	-838.29	-1517.59	841.74	40°22'16.314"N	104°48'04.857"W	7.27	
6828.00	14.480	199.690	6577.64	-835.45	-1540.10	838.94	40°22'16.092"N	104°48'04.893"W	6.73	
6921.00	17.460	218.480	6667.10	-822.79	-1561.98	826.33	40°22'15.875"N	104°48'05.056"W	6.38	
7013.00	24.960	230.300	6752.85	-799.17	-1585.23	802.77	40°22'15.646"N	104°48'05.360"W	9.35	
7106.00	32.560	242.200	6834.38	-761.79	-1609.49	765.45	40°22'15.406"N	104°48'05.843"W	10.20	
7199.00	39.250	253.250	6909.75	-711.33	-1629.69	715.03	40°22'15.206"N	104°48'06.494"W	9.99	
7291.00	46.220	257.160	6977.30	-650.96	-1645.48	654.69	40°22'15.050"N	104°48'07.274"W	8.10	
7385.00	52.670	261.050	7038.39	-580.83	-1658.85	584.60	40°22'14.918"N	104°48'08.179"W	7.55	
7480.00	61.580	262.670	7089.91	-501.90	-1670.08	505.69	40°22'14.807"N	104°48'09.199"W	9.49	
7574.00	70.320	263.050	7128.18	-416.78	-1680.73	420.60	40°22'14.702"N	104°48'10.298"W	9.31	
7666.00	74.410	262.930	7156.05	-329.76	-1691.43	333.60	40°22'14.596"N	104°48'11.422"W	4.45	
7759.00	80.190	263.640	7176.48	-239.67	-1702.03	243.53	40°22'14.492"N	104°48'12.586"W	6.26	
7853.00	86.430	265.670	7187.43	-146.75	-1710.71	150.63	40°22'14.406"N	104°48'13.786"W	6.98	
7878.00†	87.457	266.200	7188.76	-121.84	-1712.48	125.73	40°22'14.388"N	104°48'14.108"W	4.62	LANDING (2585'FNL & 2486'FWL, SEC.29)
7946.00	90.250	267.640	7190.13	-53.95	-1716.13	57.85	40°22'14.352"N	104°48'14.985"W	4.62	
8038.00	90.150	268.790	7189.80	38.01	-1718.99	-34.11	40°22'14.324"N	104°48'16.173"W	1.25	



SRC ENERGY

Actual Wellpath Report

SANFORD 32N-30B-M AWP

Page 5 of 9

**BAKER
HUGHES****REFERENCE WELLPATH IDENTIFICATION**

Operator	SRC ENERGY	Slot	SLOT#28 SANFORD 32N-30B-M (871'FNL & 2392'FWL,SEC.29)
Area	COLORADO	Well	SANFORD 32N-30B-M
Field	WELD COUNTY (NAD83,TRUE NORTH)	Wellbore	SANFORD 32N-30B-M AWB
Facility	SEC.29-T05N-R66W		

WELLPATH DATA (171 stations)

MD [ft]	Inclination [°]	Azimuth [°]	TVD [ft]	Vert Sect [ft]	North [ft]	East [ft]	Latitude	Longitude	DLS [°/100ft]	Comments
8224.00	90.180	271.230	7189.27	223.99	-1718.96	-220.09	40°22'14.324"N	104°48'18.576"W	1.31	
8316.00	90.310	271.840	7188.87	315.95	-1716.50	-312.06	40°22'14.348"N	104°48'19.764"W	0.68	
8410.00	90.400	271.490	7188.29	409.90	-1713.77	-406.02	40°22'14.375"N	104°48'20.978"W	0.38	
8504.00	90.430	270.850	7187.61	503.88	-1711.85	-499.99	40°22'14.394"N	104°48'22.192"W	0.68	
8597.00	90.250	271.540	7187.06	596.85	-1709.91	-592.97	40°22'14.414"N	104°48'23.393"W	0.77	
8783.00	90.220	270.350	7186.30	782.81	-1706.84	-778.94	40°22'14.444"N	104°48'25.796"W	0.64	
8875.00	90.520	270.660	7185.70	874.80	-1706.03	-870.93	40°22'14.452"N	104°48'26.984"W	0.47	
8968.00	90.310	271.280	7185.03	967.78	-1704.45	-963.92	40°22'14.467"N	104°48'28.186"W	0.70	
9062.00	90.520	272.020	7184.35	1061.73	-1701.75	-1057.88	40°22'14.494"N	104°48'29.400"W	0.82	
9153.00	90.280	271.990	7183.71	1152.67	-1698.56	-1148.82	40°22'14.525"N	104°48'30.574"W	0.27	
9247.00	90.520	272.480	7183.06	1246.59	-1694.90	-1242.74	40°22'14.562"N	104°48'31.788"W	0.58	
9340.00	89.510	272.500	7183.03	1339.49	-1690.86	-1335.66	40°22'14.602"N	104°48'32.988"W	1.09	
9432.00	89.230	272.110	7184.04	1431.40	-1687.16	-1427.58	40°22'14.638"N	104°48'34.176"W	0.52	
9525.00	89.170	271.980	7185.34	1524.32	-1683.84	-1520.51	40°22'14.671"N	104°48'35.377"W	0.15	
9619.00	89.380	270.730	7186.53	1618.28	-1681.62	-1614.47	40°22'14.693"N	104°48'36.591"W	1.35	
9712.00	89.320	270.020	7187.59	1711.27	-1681.01	-1707.46	40°22'14.699"N	104°48'37.792"W	0.77	
9804.00	89.200	269.340	7188.77	1803.26	-1681.52	-1799.45	40°22'14.693"N	104°48'38.981"W	0.75	
9897.00	89.200	268.850	7190.07	1896.25	-1682.99	-1892.43	40°22'14.679"N	104°48'40.182"W	0.53	
9989.00	89.200	268.550	7191.36	1988.22	-1685.08	-1984.40	40°22'14.658"N	104°48'41.370"W	0.33	
10082.00	89.140	268.390	7192.71	2081.18	-1687.56	-2077.36	40°22'14.634"N	104°48'42.571"W	0.18	
10176.00	89.480	268.250	7193.84	2175.14	-1690.32	-2171.31	40°22'14.606"N	104°48'43.785"W	0.39	
10268.00	89.450	268.070	7194.70	2267.09	-1693.27	-2263.26	40°22'14.577"N	104°48'44.973"W	0.20	
10361.00	89.600	268.130	7195.47	2360.05	-1696.35	-2356.20	40°22'14.546"N	104°48'46.174"W	0.17	
10453.00	89.510	268.280	7196.18	2452.00	-1699.24	-2448.15	40°22'14.518"N	104°48'47.362"W	0.19	
10546.00	89.540	268.390	7196.95	2544.97	-1701.94	-2541.11	40°22'14.491"N	104°48'48.563"W	0.12	
10640.00	89.630	269.070	7197.63	2638.95	-1704.02	-2635.09	40°22'14.470"N	104°48'49.777"W	0.73	
10733.00	88.460	268.580	7199.18	2731.92	-1705.93	-2728.05	40°22'14.451"N	104°48'50.978"W	1.36	
10825.00	88.580	269.040	7201.56	2823.87	-1707.84	-2820.00	40°22'14.432"N	104°48'52.166"W	0.52	
10919.00	88.580	269.340	7203.89	2917.83	-1709.17	-2913.96	40°22'14.419"N	104°48'53.380"W	0.32	
11011.00	88.210	269.350	7206.47	3009.79	-1710.22	-3005.92	40°22'14.409"N	104°48'54.568"W	0.40	



SRC ENERGY

Actual Wellpath Report

SANFORD 32N-30B-M AWP

Page 6 of 9



**BAKER
HUGHES**

REFERENCE WELLPATH IDENTIFICATION

Operator	SRC ENERGY	Slot	SLOT#28 SANFORD 32N-30B-M (871'FNL & 2392'FWL,SEC.29)
Area	COLORADO	Well	SANFORD 32N-30B-M
Field	WELD COUNTY (NAD83,TRUE NORTH)	Wellbore	SANFORD 32N-30B-M AWB
Facility	SEC.29-T05N-R66W		

WELLPATH DATA (171 stations)

MD [ft]	Inclination [°]	Azimuth [°]	TVD [ft]	Vert Sect [ft]	North [ft]	East [ft]	Latitude	Longitude	DLS [°/100ft]	Comments
11105.00	89.570	270.280	7208.29	3103.77	-1710.52	-3099.90	40°22'14.406"N	104°48'55.782"W	1.75	
11198.00	89.540	270.910	7209.01	3196.76	-1709.56	-3192.89	40°22'14.415"N	104°48'56.983"W	0.68	
11292.00	89.350	270.790	7209.92	3290.74	-1708.16	-3286.88	40°22'14.429"N	104°48'58.198"W	0.24	
11385.00	89.290	272.950	7211.02	3383.67	-1705.13	-3379.81	40°22'14.459"N	104°48'59.398"W	2.32	
11479.00	90.060	272.030	7211.56	3477.57	-1701.04	-3473.72	40°22'14.499"N	104°49'00.612"W	1.28	
11573.00	90.090	272.500	7211.43	3571.49	-1697.33	-3567.65	40°22'14.535"N	104°49'01.825"W	0.50	
11665.00	90.030	272.050	7211.34	3663.41	-1693.68	-3659.58	40°22'14.571"N	104°49'03.013"W	0.49	
11757.00	89.320	271.100	7211.86	3755.37	-1691.15	-3751.54	40°22'14.596"N	104°49'04.201"W	1.29	
11851.00	89.320	271.350	7212.97	3849.33	-1689.14	-3845.51	40°22'14.616"N	104°49'05.415"W	0.27	
11944.00	88.980	270.170	7214.35	3942.31	-1687.90	-3938.49	40°22'14.628"N	104°49'06.616"W	1.32	
12037.00	88.920	269.640	7216.06	4035.29	-1688.06	-4031.47	40°22'14.626"N	104°49'07.818"W	0.57	
12129.00	90.120	269.090	7216.83	4127.28	-1689.08	-4123.46	40°22'14.616"N	104°49'09.006"W	1.43	
12222.00	90.060	267.910	7216.68	4220.26	-1691.51	-4216.43	40°22'14.592"N	104°49'10.207"W	1.27	
12316.00	90.000	267.290	7216.63	4314.18	-1695.45	-4310.35	40°22'14.553"N	104°49'11.421"W	0.66	
12409.00	90.090	268.470	7216.56	4407.12	-1698.89	-4403.28	40°22'14.519"N	104°49'12.621"W	1.27	
12503.00	90.060	269.170	7216.44	4501.11	-1700.83	-4497.26	40°22'14.499"N	104°49'13.836"W	0.75	
12596.00	89.880	269.220	7216.49	4594.10	-1702.13	-4590.25	40°22'14.486"N	104°49'15.037"W	0.20	
12688.00	90.060	270.540	7216.54	4686.10	-1702.32	-4682.25	40°22'14.484"N	104°49'16.226"W	1.45	
12783.00	89.880	272.780	7216.58	4781.05	-1699.57	-4777.20	40°22'14.511"N	104°49'17.452"W	2.37	
12875.00	90.150	273.830	7216.56	4872.88	-1694.27	-4869.05	40°22'14.563"N	104°49'18.639"W	1.18	
12970.00	90.310	273.390	7216.18	4967.68	-1688.29	-4963.86	40°22'14.622"N	104°49'19.864"W	0.49	
13063.00	89.940	271.510	7215.98	5060.58	-1684.31	-5056.77	40°22'14.661"N	104°49'21.064"W	2.06	
13156.00	90.150	271.140	7215.90	5153.55	-1682.16	-5149.74	40°22'14.683"N	104°49'22.266"W	0.46	
13249.00	89.970	269.920	7215.81	5246.54	-1681.30	-5242.74	40°22'14.691"N	104°49'23.467"W	1.33	
13341.00	90.250	269.360	7215.63	5338.54	-1681.88	-5334.74	40°22'14.685"N	104°49'24.656"W	0.68	
13435.00	90.250	270.080	7215.22	5432.54	-1682.34	-5428.73	40°22'14.680"N	104°49'25.870"W	0.77	
13529.00	90.370	273.040	7214.71	5526.48	-1679.78	-5522.69	40°22'14.705"N	104°49'27.084"W	3.15	
13623.00	90.310	274.100	7214.15	5620.28	-1673.93	-5616.50	40°22'14.763"N	104°49'28.296"W	1.13	
13716.00	90.370	273.610	7213.60	5713.06	-1667.67	-5709.29	40°22'14.824"N	104°49'29.495"W	0.53	
13811.00	89.940	272.920	7213.34	5807.89	-1662.26	-5804.13	40°22'14.878"N	104°49'30.720"W	0.86	



SRC ENERGY

Actual Wellpath Report

SANFORD 32N-30B-M AWP

Page 7 of 9



REFERENCE WELLPATH IDENTIFICATION

Operator	SRC ENERGY	Slot	SLOT#28 SANFORD 32N-30B-M (871'FNL & 2392'FWL, SEC.29)
Area	COLORADO	Well	SANFORD 32N-30B-M
Field	WELD COUNTY (NAD83, TRUE NORTH)	Wellbore	SANFORD 32N-30B-M AWB
Facility	SEC.29-T05N-R66W		

WELLPATH DATA (171 stations)

MD [ft]	Inclination [°]	Azimuth [°]	TVD [ft]	Vert Sect [ft]	North [ft]	East [ft]	Latitude	Longitude	DLS [°/100ft]	Comments
13903.00	91.050	272.880	7212.55	5899.76	-1657.61	-5896.01	40°22'14.923"N	104°49'31.907"W	1.21	
13996.00	91.080	271.280	7210.82	5992.67	-1654.23	-5988.93	40°22'14.957"N	104°49'33.108"W	1.72	
14090.00	91.020	270.820	7209.10	6086.63	-1652.51	-6082.90	40°22'14.973"N	104°49'34.322"W	0.49	
14182.00	91.140	269.830	7207.36	6178.61	-1651.99	-6174.88	40°22'14.978"N	104°49'35.510"W	1.08	
14276.00	89.940	268.500	7206.48	6272.60	-1653.36	-6268.86	40°22'14.965"N	104°49'36.724"W	1.91	
14369.00	89.940	267.220	7206.58	6365.54	-1656.83	-6361.79	40°22'14.930"N	104°49'37.925"W	1.38	
14461.00	90.890	266.310	7205.91	6457.40	-1662.02	-6453.64	40°22'14.878"N	104°49'39.112"W	1.43	
14553.00	89.780	266.540	7205.37	6549.23	-1667.76	-6545.46	40°22'14.822"N	104°49'40.298"W	1.23	
14648.00	89.850	267.540	7205.68	6644.11	-1672.67	-6640.33	40°22'14.773"N	104°49'41.524"W	1.06	
14743.00	90.060	267.880	7205.75	6739.04	-1676.46	-6735.26	40°22'14.735"N	104°49'42.750"W	0.42	
14836.00	89.780	267.900	7205.88	6831.99	-1679.89	-6828.19	40°22'14.701"N	104°49'43.951"W	0.30	
14930.00	90.000	268.390	7206.06	6925.94	-1682.93	-6922.14	40°22'14.671"N	104°49'45.165"W	0.57	
15023.00	89.720	268.130	7206.29	7018.91	-1685.75	-7015.10	40°22'14.642"N	104°49'46.366"W	0.41	
15115.00	90.090	269.310	7206.44	7110.89	-1687.81	-7107.08	40°22'14.622"N	104°49'47.554"W	1.34	
15207.00	90.000	269.510	7206.37	7202.88	-1688.76	-7199.07	40°22'14.612"N	104°49'48.742"W	0.24	
15300.00	90.000	269.490	7206.37	7295.88	-1689.57	-7292.07	40°22'14.604"N	104°49'49.944"W	0.02	
15393.00	90.090	268.990	7206.30	7388.88	-1690.80	-7385.06	40°22'14.592"N	104°49'51.145"W	0.55	
15486.00	89.910	268.650	7206.30	7481.86	-1692.72	-7478.04	40°22'14.572"N	104°49'52.347"W	0.41	
15581.00	90.150	268.660	7206.25	7576.84	-1694.95	-7573.01	40°22'14.550"N	104°49'53.574"W	0.25	
15630.00	89.940	268.070	7206.21	7625.82	-1696.34	-7621.99	40°22'14.536"N	104°49'54.206"W	1.28	LAST BH SURVEY (2574'FNL & 97'FWL, SEC.30)
15654.00	89.940	268.070	7206.23	7649.81	-1697.15	-7645.98	40°22'14.528"N	104°49'54.516"W	0.00	PROJ TO BIT (2575'FNL & 73'FWL, SEC.30)

HOLE & CASING SECTIONS - Ref Wellbore: SANFORD 32N-30B-M AWB Ref Wellpath: SANFORD 32N-30B-M AWP

String/Diameter	Start MD [ft]	End MD [ft]	Interval [ft]	Start TVD [ft]	End TVD [ft]	Start N/S [ft]	Start E/W [ft]	End N/S [ft]	End E/W [ft]
9.625in Casing Surface	20.00	1792.00	1772.00	20.00	1751.43	0.00	0.00	-296.98	142.59



Actual Wellpath Report

SANFORD 32N-30B-M AWP

Page 8 of 9



REFERENCE WELLPATH IDENTIFICATION

Operator	SRC ENERGY	Slot	SLOT#28 SANFORD 32N-30B-M (871'FNL & 2392'FWL,SEC.29)
Area	COLORADO	Well	SANFORD 32N-30B-M
Field	WELD COUNTY (NAD83,TRUE NORTH)	Wellbore	SANFORD 32N-30B-M AWB
Facility	SEC.29-T05N-R66W		

TARGETS

Name	TVD [ft]	North [ft]	East [ft]	Grid East [US ft]	Grid North [US ft]	Latitude	Longitude	Shape
SEC.29-T05N-R66W	15.00	259.03	-151.57	3193654.99	1380603.61	40°22'33.870"N	104°48'17.690"W	polygon
SEC.30-T05N-R66W	15.00	259.03	-151.57	3193654.99	1380603.61	40°22'33.870"N	104°48'17.690"W	polygon
SANFORD 32N-30B-M TPZ ON PLAT (2552'FNL & 2477'FWL,SEC.29)	7184.00	-1680.22	116.72	3193938.47	1378666.61	40°22'14.707"N	104°48'14.224"W	point
SANFORD 32N-30B-M TPZ REV-1 (2577'FNL & 2477'FWL,SEC.29)	7188.65	-1705.22	116.72	3193938.66	1378641.61	40°22'14.460"N	104°48'14.224"W	point
SANFORD 32N-30B-M BHL ON PLAT (2544'FNL & 50'FWL,SEC.30)	7195.00	-1665.89	-7669.07	3186153.14	1378619.86	40°22'14.837"N	104°49'54.815"W	point
SANFORD 32N-30B-M BPZ ON PLAT (2544'FNL & 150'FWL,SEC.30)	7195.00	-1666.31	-7569.01	3186253.20	1378620.23	40°22'14.833"N	104°49'53.522"W	point
SANFORD 32N-30B-M BHL REV-1 (2544'FNL & 50'FWL,SEC.30)	7205.08	-1665.87	-7669.09	3186153.12	1378619.88	40°22'14.837"N	104°49'54.815"W	point
SANFORD 32N-30B-M BPZ REV-1 (2544'FNL & 150'FWL,SEC.30)	7205.08	-1666.31	-7569.01	3186253.20	1378620.23	40°22'14.833"N	104°49'53.522"W	point
SANFORD 4N-30C-M HARDLINE BOX	7290.00	200.01	-1.11	3193805.89	1380545.77	40°22'33.287"N	104°48'15.746"W	polygon

WELLPATH COMPOSITION - Ref Wellbore: SANFORD 32N-30B-M AWB Ref Wellpath: SANFORD 32N-30B-M AWP

Start MD [ft]	End MD [ft]	Positional Uncertainty Model	Log Name/Comment	Wellbore
20.00	1785.00	BHI NaviTrak (Axial)	BH/NAVITRAK (AXIAL) 13 1/2" SURFACE HOLE <87'-1769'>	SANFORD 32N-30B-M AWB
1785.00	15630.00	BHI AutoTrak Curve (MagCAD+IRF1, Short spacing)	BH/AUTOTRAK CURVE (MAGCAD+IRF1, SHORT SPACING) 8 1/2" HOLE <1859'- 15630'>	SANFORD 32N-30B-M AWB
15630.00	15654.00	Blind Drilling (std)	Projection to bit	SANFORD 32N-30B-M AWB



SRC ENERGY

Actual Wellpath Report

SANFORD 32N-30B-M AWP

Page 9 of 9



REFERENCE WELLPATH IDENTIFICATION

Operator	SRC ENERGY	Slot	SLOT#28 SANFORD 32N-30B-M (871'FNL & 2392'FWL,SEC.29)
Area	COLORADO	Well	SANFORD 32N-30B-M
Field	WELD COUNTY (NAD83,TRUE NORTH)	Wellbore	SANFORD 32N-30B-M AWB
Facility	SEC.29-T05N-R66W		

WELLPATH COMMENTS

MD [ft]	Inclination [°]	Azimuth [°]	TVD [ft]	Comment
7878.00	87.457	266.200	7188.76	LANDING (2585'FNL & 2486'FWL, SEC.29)
15630.00	89.940	268.070	7206.21	LAST BH SURVEY (2574'FNL & 97'FWL, SEC.30)
15654.00	89.940	268.070	7206.23	PROJ TO BIT (2575'FNL & 73'FWL, SEC.30)