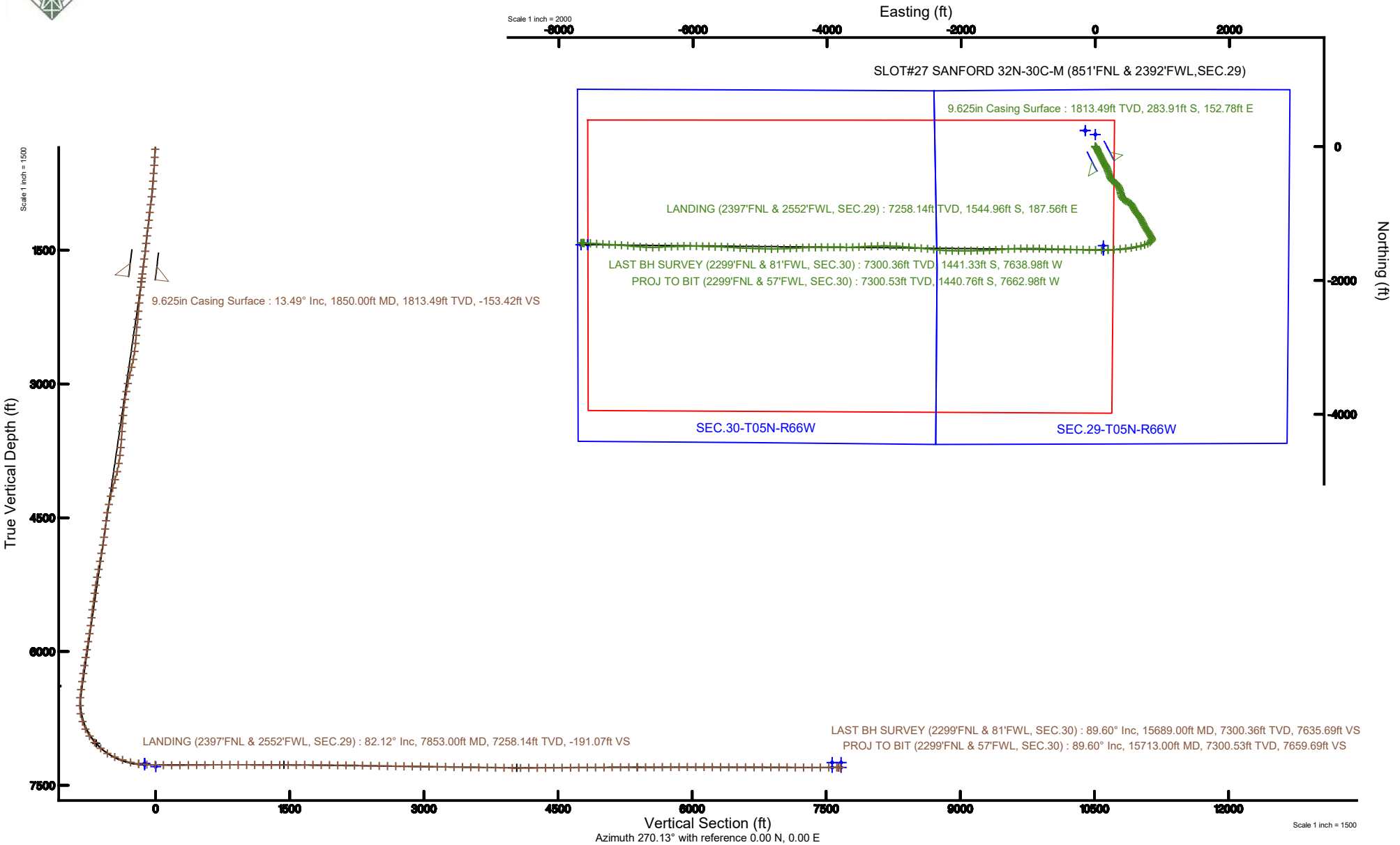


SRC ENERGY

Location: COLORADO Slot: SLOT#27 SANFORD 32N-30C-M (851'FNL & 2392'FWL,SEC.29)
Field: WELD COUNTY (NAD83,TRUE NORTH) Well: SANFORD 32N-30C-M
Facility: SEC.29-T05N-R66W Wellbore: SANFORD 32N-30C-M PWB

Plot reference wellpath is SANFORD 32N-30C-M (REV-B.0) PWP	Grid System: NAD83 / Lambert Colorado SP, Northern Zone (501), US feet
True vertical depths are referenced to PRECISION 462 (20') (RKB)	North Reference: True north
Measured depths are referenced to PRECISION 462 (20') (RKB)	Scale: True distance
PRECISION 462 (20') (RKB) to Mean Sea Level: 4924 feet	Depths are in feet
Mean Sea Level to Mud line (At Slot: SLOT#27 SANFORD 32N-30C-M (851'FNL & 2392'FWL,SEC.29)): 0 feet	Created by: doddanna on 2019-06-18
Coordinates are in feet referenced to Slot	Database: WellArchitectDB





Actual Wellpath Report

SANFORD 32N-30C-M AWP
Page 1 of 10



REFERENCE WELLPATH IDENTIFICATION

Operator	SRC ENERGY	Slot	SLOT#27 SANFORD 32N-30C-M (851'FNL & 2392'FWL,SEC.29)
Area	COLORADO	Well	SANFORD 32N-30C-M
Field	WELD COUNTY (NAD83,TRUE NORTH)	Wellbore	SANFORD 32N-30C-M AWP
Facility	SEC.29-T05N-R66W		

REPORT SETUP INFORMATION

Projection System	NAD83 / Lambert Colorado SP, Northern Zone (501), US feet	Software System	WellArchitect® 5.1
North Reference	True	User	Doddanna
Scale	0.999959	Report Generated	6/18/2019 at 2:41:56 PM
Convergence at slot	0.45° East	Database/Source file	WellArchitectDB/SANFORD_32N-30C-M_AWP.xml

WELLPATH LOCATION

	Local coordinates		Grid coordinates		Geographic coordinates	
	North[ft]	East[ft]	Easting[US ft]	Northing[US ft]	Latitude	Longitude
Slot Location	-238.99	151.57	3193808.42	1380365.82	40°22'31.508"N	104°48'15.732"W
Facility Reference Pt			3193654.99	1380603.61	40°22'33.870"N	104°48'17.690"W
Field Reference Pt			3171284.48	1426358.81	40°30'07.643"N	104°53'02.634"W

WELLPATH DATUM

Calculation method	Minimum curvature	PRECISION 462 (20') (RKB) to Facility Vertical Datum	4924.00ft
Horizontal Reference Pt	Slot	PRECISION 462 (20') (RKB) to Mean Sea Level	4924.00ft
Vertical Reference Pt	PRECISION 462 (20') (RKB)	PRECISION 462 (20') (RKB) to Mud Line at Slot (SLOT#27 SANFORD 32N-30C-M (851'FNL & 2392'FWL,SEC.29))	4924.00ft
MD Reference Pt	PRECISION 462 (20') (RKB)	Section Origin	N 0.00, E 0.00 ft
Field Vertical Reference	Mean Sea Level	Section Azimuth	270.13°



SRC ENERGY

Actual Wellpath Report

SANFORD 32N-30C-M AWP

Page 2 of 10

**BAKER
HUGHES****REFERENCE WELLPATH IDENTIFICATION**

Operator	SRC ENERGY	Slot	SLOT#27 SANFORD 32N-30C-M (851'FNL & 2392'FWL,SEC.29)
Area	COLORADO	Well	SANFORD 32N-30C-M
Field	WELD COUNTY (NAD83,TRUE NORTH)	Wellbore	SANFORD 32N-30C-M AWB
Facility	SEC.29-T05N-R66W		

WELLPATH DATA (173 stations) † = interpolated/extrapolated station

MD [ft]	Inclination [°]	Azimuth [°]	TVD [ft]	Vert Sect [ft]	North [ft]	East [ft]	Latitude	Longitude	DLS [°/100ft]	Comments
0.00†	0.000	319.760	0.00	0.00	0.00	0.00	40°22'31.508"N	104°48'15.732"W	0.00	
20.00	0.000	319.760	20.00	0.00	0.00	0.00	40°22'31.508"N	104°48'15.732"W	0.00	
103.00	0.070	319.760	103.00	0.03	0.04	-0.03	40°22'31.509"N	104°48'15.732"W	0.08	
193.00	0.070	129.120	193.00	0.03	0.05	-0.03	40°22'31.509"N	104°48'15.732"W	0.15	
278.00	1.880	133.970	277.98	-1.02	-0.95	1.02	40°22'31.499"N	104°48'15.719"W	2.13	
370.00	5.040	144.320	369.81	-4.47	-5.29	4.46	40°22'31.456"N	104°48'15.674"W	3.49	
460.00	6.140	145.180	459.38	-9.54	-12.45	9.52	40°22'31.385"N	104°48'15.609"W	1.23	
550.00	7.320	144.620	548.75	-15.63	-21.08	15.58	40°22'31.300"N	104°48'15.531"W	1.31	
640.00	8.220	150.480	637.93	-22.15	-31.35	22.07	40°22'31.199"N	104°48'15.447"W	1.33	
730.00	10.100	157.310	726.78	-28.39	-44.23	28.29	40°22'31.071"N	104°48'15.366"W	2.41	
820.00	12.260	157.610	815.07	-35.11	-60.35	34.97	40°22'30.912"N	104°48'15.280"W	2.40	
910.00	14.140	152.370	902.69	-43.89	-78.93	43.71	40°22'30.728"N	104°48'15.167"W	2.47	
1000.00	14.710	150.460	989.85	-54.67	-98.61	54.45	40°22'30.534"N	104°48'15.029"W	0.82	
1090.00	14.810	151.830	1076.88	-65.78	-118.69	65.51	40°22'30.336"N	104°48'14.886"W	0.40	
1180.00	14.460	153.890	1163.96	-76.20	-138.92	75.89	40°22'30.136"N	104°48'14.752"W	0.70	
1270.00	14.480	152.140	1251.11	-86.45	-158.96	86.09	40°22'29.938"N	104°48'14.620"W	0.49	
1360.00	14.590	153.840	1338.23	-96.75	-179.08	96.34	40°22'29.739"N	104°48'14.487"W	0.49	
1450.00	14.630	155.850	1425.32	-106.44	-199.62	105.99	40°22'29.536"N	104°48'14.363"W	0.57	
1540.00	14.710	152.430	1512.38	-116.43	-220.12	115.93	40°22'29.333"N	104°48'14.234"W	0.97	
1630.00	13.930	150.730	1599.59	-127.06	-239.70	126.52	40°22'29.140"N	104°48'14.097"W	0.98	
1720.00	13.170	150.040	1687.08	-137.52	-258.04	136.93	40°22'28.959"N	104°48'13.963"W	0.86	
1801.00	13.710	147.520	1765.86	-147.32	-274.13	146.70	40°22'28.800"N	104°48'13.837"W	0.98	
1892.00	13.300	149.800	1854.35	-158.42	-292.27	157.75	40°22'28.620"N	104°48'13.694"W	0.74	
1954.00	14.810	155.620	1914.49	-165.30	-305.66	164.61	40°22'28.488"N	104°48'13.605"W	3.33	
2047.00	15.460	156.870	2004.27	-175.13	-327.88	174.39	40°22'28.268"N	104°48'13.479"W	0.78	
2139.00	15.000	159.770	2093.04	-184.12	-350.33	183.32	40°22'28.047"N	104°48'13.363"W	0.97	
2234.00	15.400	163.640	2184.72	-191.97	-373.97	191.13	40°22'27.813"N	104°48'13.263"W	1.15	
2327.00	15.350	157.600	2274.39	-200.20	-397.20	199.30	40°22'27.583"N	104°48'13.157"W	1.72	
2420.00	14.900	156.010	2364.17	-209.80	-419.50	208.85	40°22'27.363"N	104°48'13.034"W	0.66	
2515.00	15.160	165.610	2455.94	-217.91	-442.70	216.90	40°22'27.134"N	104°48'12.930"W	2.63	



SRC ENERGY

Actual Wellpath Report

SANFORD 32N-30C-M AWP

Page 3 of 10

**BAKER
HUGHES****REFERENCE WELLPATH IDENTIFICATION**

Operator	SRC ENERGY	Slot	SLOT#27 SANFORD 32N-30C-M (851'FNL & 2392'FWL,SEC.29)
Area	COLORADO	Well	SANFORD 32N-30C-M
Field	WELD COUNTY (NAD83,TRUE NORTH)	Wellbore	SANFORD 32N-30C-M AWB
Facility	SEC.29-T05N-R66W		

WELLPATH DATA (173 stations)

MD [ft]	Inclination [°]	Azimuth [°]	TVD [ft]	Vert Sect [ft]	North [ft]	East [ft]	Latitude	Longitude	DLS [°/100ft]	Comments
2607.00	15.360	161.610	2544.70	-224.79	-465.91	223.74	40°22'26.904"N	104°48'12.841"W	1.16	
2701.00	15.540	146.340	2635.34	-235.75	-488.22	234.65	40°22'26.684"N	104°48'12.700"W	4.32	
2793.00	15.520	137.760	2723.99	-250.90	-507.59	249.75	40°22'26.493"N	104°48'12.505"W	2.49	
2886.00	15.620	127.660	2813.59	-269.22	-524.45	268.03	40°22'26.326"N	104°48'12.269"W	2.91	
2979.00	15.400	116.980	2903.23	-290.17	-537.71	288.95	40°22'26.195"N	104°48'11.999"W	3.08	
3073.00	14.320	126.660	2994.09	-310.65	-550.31	309.41	40°22'26.070"N	104°48'11.734"W	2.88	
3166.00	15.430	140.670	3084.01	-327.76	-566.76	326.48	40°22'25.908"N	104°48'11.514"W	4.04	
3258.00	15.950	147.850	3172.59	-342.29	-586.93	340.96	40°22'25.709"N	104°48'11.327"W	2.18	
3352.00	15.240	155.200	3263.13	-354.40	-609.08	353.02	40°22'25.490"N	104°48'11.171"W	2.23	
3445.00	16.190	161.750	3352.66	-363.64	-632.49	362.21	40°22'25.258"N	104°48'11.052"W	2.16	
3540.00	15.690	165.260	3444.01	-371.12	-657.49	369.62	40°22'25.011"N	104°48'10.956"W	1.14	
3633.00	16.170	170.270	3533.45	-376.56	-682.42	375.01	40°22'24.765"N	104°48'10.887"W	1.57	
3727.00	16.050	166.860	3623.76	-381.78	-707.97	380.18	40°22'24.512"N	104°48'10.820"W	1.01	
3820.00	16.170	158.640	3713.12	-389.48	-732.56	387.82	40°22'24.269"N	104°48'10.721"W	2.45	
3912.00	16.110	156.760	3801.49	-399.24	-756.22	397.52	40°22'24.036"N	104°48'10.596"W	0.57	
4006.00	17.130	146.020	3891.58	-412.18	-779.69	410.41	40°22'23.804"N	104°48'10.429"W	3.44	
4101.00	17.280	128.910	3982.39	-431.03	-800.16	429.22	40°22'23.601"N	104°48'10.186"W	5.31	
4197.00	16.680	113.370	4074.25	-454.82	-814.59	452.97	40°22'23.459"N	104°48'09.879"W	4.75	
4291.00	15.950	109.700	4164.47	-479.39	-824.30	477.52	40°22'23.363"N	104°48'09.562"W	1.34	
4387.00	14.170	117.820	4257.18	-502.22	-834.23	500.33	40°22'23.265"N	104°48'09.268"W	2.87	
4483.00	15.790	128.500	4349.93	-522.87	-847.85	520.95	40°22'23.130"N	104°48'09.001"W	3.33	
4579.00	14.900	137.880	4442.52	-541.42	-865.14	539.45	40°22'22.959"N	104°48'08.762"W	2.74	
4673.00	16.090	156.440	4533.16	-554.78	-886.05	552.78	40°22'22.753"N	104°48'08.590"W	5.40	
4770.00	16.240	157.330	4626.33	-565.44	-910.89	563.38	40°22'22.507"N	104°48'08.453"W	0.30	
4865.00	16.310	153.630	4717.52	-576.54	-935.10	574.42	40°22'22.268"N	104°48'08.310"W	1.09	
4958.00	16.270	145.660	4806.80	-589.74	-957.56	587.57	40°22'22.046"N	104°48'08.140"W	2.40	
5053.00	16.270	140.040	4898.00	-605.85	-978.75	603.63	40°22'21.837"N	104°48'07.933"W	1.66	
5146.00	16.100	141.590	4987.32	-622.27	-998.84	620.01	40°22'21.638"N	104°48'07.721"W	0.50	
5240.00	16.140	141.600	5077.62	-638.53	-1019.29	636.22	40°22'21.436"N	104°48'07.512"W	0.04	
5333.00	15.960	143.410	5166.99	-654.23	-1039.69	651.87	40°22'21.234"N	104°48'07.310"W	0.57	



SRC ENERGY

Actual Wellpath Report

SANFORD 32N-30C-M AWP

Page 4 of 10

**BAKER
HUGHES****REFERENCE WELLPATH IDENTIFICATION**

Operator	SRC ENERGY	Slot	SLOT#27 SANFORD 32N-30C-M (851'FNL & 2392'FWL, SEC.29)
Area	COLORADO	Well	SANFORD 32N-30C-M
Field	WELD COUNTY (NAD83, TRUE NORTH)	Wellbore	SANFORD 32N-30C-M AWB
Facility	SEC.29-T05N-R66W		

WELLPATH DATA (173 stations)

MD [ft]	Inclination [°]	Azimuth [°]	TVD [ft]	Vert Sect [ft]	North [ft]	East [ft]	Latitude	Longitude	DLS [°/100ft]	Comments
5426.00	16.160	147.030	5256.37	-668.94	-1060.81	666.53	40°22'21.026"N	104°48'07.120"W	1.10	
5519.00	16.210	150.820	5345.68	-682.36	-1083.01	679.91	40°22'20.806"N	104°48'06.948"W	1.14	
5616.00	16.100	153.120	5438.85	-695.10	-1106.82	692.59	40°22'20.571"N	104°48'06.784"W	0.67	
5711.00	16.060	156.450	5530.14	-706.36	-1130.62	703.79	40°22'20.336"N	104°48'06.639"W	0.97	
5806.00	15.980	157.710	5621.45	-716.62	-1154.76	714.01	40°22'20.097"N	104°48'06.507"W	0.38	
5898.00	16.110	152.630	5709.87	-727.35	-1177.82	724.68	40°22'19.869"N	104°48'06.369"W	1.53	
5991.00	15.960	146.710	5799.26	-740.35	-1199.97	737.63	40°22'19.651"N	104°48'06.202"W	1.76	
6084.00	15.930	147.120	5888.68	-754.34	-1221.37	751.57	40°22'19.439"N	104°48'06.022"W	0.13	
6177.00	16.030	146.330	5978.09	-768.44	-1242.78	765.62	40°22'19.228"N	104°48'05.840"W	0.26	
6270.00	15.950	145.380	6067.49	-782.87	-1263.98	780.00	40°22'19.018"N	104°48'05.654"W	0.29	
6362.00	15.900	148.820	6155.96	-796.62	-1285.16	793.71	40°22'18.809"N	104°48'05.477"W	1.03	
6455.00	15.870	152.040	6245.41	-809.23	-1307.29	806.26	40°22'18.590"N	104°48'05.315"W	0.95	
6549.00	15.040	150.550	6336.01	-821.30	-1329.27	818.29	40°22'18.373"N	104°48'05.160"W	0.98	
6642.00	15.170	148.140	6425.80	-833.70	-1350.11	830.64	40°22'18.167"N	104°48'05.000"W	0.69	
6735.00	13.300	159.330	6515.96	-843.95	-1370.46	840.84	40°22'17.966"N	104°48'04.868"W	3.57	
6828.00	13.180	183.510	6606.55	-847.13	-1391.07	843.97	40°22'17.762"N	104°48'04.828"W	5.91	
6921.00	15.240	221.410	6696.89	-838.42	-1410.86	835.22	40°22'17.567"N	104°48'04.941"W	10.05	
7014.00	20.990	232.660	6785.27	-817.11	-1430.15	813.87	40°22'17.376"N	104°48'05.217"W	7.21	
7107.00	28.370	244.830	6869.78	-783.85	-1449.69	780.56	40°22'17.183"N	104°48'05.647"W	9.60	
7199.00	36.360	251.410	6947.44	-738.17	-1467.72	734.84	40°22'17.005"N	104°48'06.238"W	9.48	
7292.00	43.100	255.930	7018.94	-681.18	-1484.25	677.82	40°22'16.841"N	104°48'06.975"W	7.88	
7387.00	48.830	260.060	7084.96	-614.44	-1498.33	611.04	40°22'16.702"N	104°48'07.837"W	6.79	
7482.00	58.550	261.220	7141.15	-539.02	-1510.72	535.59	40°22'16.580"N	104°48'08.812"W	10.28	
7575.00	68.440	262.750	7182.61	-456.73	-1522.26	453.28	40°22'16.466"N	104°48'09.876"W	10.74	
7667.00	70.730	264.590	7214.70	-371.07	-1531.75	367.59	40°22'16.372"N	104°48'10.983"W	3.12	
7761.00	76.580	265.400	7241.14	-281.27	-1539.61	277.78	40°22'16.294"N	104°48'12.143"W	6.28	
7853.00	82.120	267.790	7258.14	-191.07	-1544.96	187.56	40°22'16.242"N	104°48'13.309"W	6.54	LANDING (2397'FNL & 2552'FWL, SEC.29)
7947.00	87.810	269.970	7266.39	-97.50	-1546.78	93.99	40°22'16.224"N	104°48'14.518"W	6.48	
8039.00	88.000	271.760	7269.75	-5.57	-1545.39	2.06	40°22'16.237"N	104°48'15.705"W	1.96	
8132.00	88.090	270.790	7272.92	87.36	-1543.33	-90.86	40°22'16.258"N	104°48'16.906"W	1.05	



SRC ENERGY

Actual Wellpath Report

SANFORD 32N-30C-M AWP

Page 5 of 10

**BAKER
HUGHES****REFERENCE WELLPATH IDENTIFICATION**

Operator	SRC ENERGY	Slot	SLOT#27 SANFORD 32N-30C-M (851'FNL & 2392'FWL,SEC.29)
Area	COLORADO	Well	SANFORD 32N-30C-M
Field	WELD COUNTY (NAD83,TRUE NORTH)	Wellbore	SANFORD 32N-30C-M AWB
Facility	SEC.29-T05N-R66W		

WELLPATH DATA (173 stations)

MD [ft]	Inclination [°]	Azimuth [°]	TVD [ft]	Vert Sect [ft]	North [ft]	East [ft]	Latitude	Longitude	DLS [°/100ft]	Comments
8224.00	90.120	270.980	7274.36	179.33	-1541.91	-182.83	40°22'16.272"N	104°48'18.094"W	2.22	
8317.00	90.400	271.070	7273.94	272.32	-1540.24	-275.82	40°22'16.288"N	104°48'19.296"W	0.32	
8412.00	90.800	271.610	7272.94	367.29	-1538.02	-370.78	40°22'16.310"N	104°48'20.522"W	0.71	
8504.00	90.430	271.690	7271.95	459.26	-1535.37	-462.74	40°22'16.336"N	104°48'21.711"W	0.41	
8597.00	90.400	271.440	7271.28	552.22	-1532.83	-555.70	40°22'16.361"N	104°48'22.912"W	0.27	
8690.00	90.520	272.050	7270.53	645.18	-1530.00	-648.66	40°22'16.389"N	104°48'24.113"W	0.67	
8783.00	89.880	271.660	7270.21	738.14	-1526.99	-741.61	40°22'16.419"N	104°48'25.313"W	0.81	
8876.00	89.880	271.120	7270.40	831.12	-1524.73	-834.58	40°22'16.441"N	104°48'26.515"W	0.58	
8969.00	90.000	270.870	7270.50	924.11	-1523.12	-927.56	40°22'16.457"N	104°48'27.716"W	0.30	
9062.00	89.970	270.070	7270.53	1017.10	-1522.36	-1020.56	40°22'16.465"N	104°48'28.918"W	0.86	
9154.00	89.600	269.150	7270.87	1109.10	-1522.98	-1112.56	40°22'16.459"N	104°48'30.106"W	1.08	
9248.00	90.220	267.690	7271.02	1203.05	-1525.57	-1206.52	40°22'16.433"N	104°48'31.320"W	1.69	
9341.00	90.000	266.970	7270.84	1295.94	-1529.91	-1299.42	40°22'16.390"N	104°48'32.520"W	0.81	
9433.00	89.480	265.910	7271.26	1387.75	-1535.62	-1391.24	40°22'16.334"N	104°48'33.707"W	1.28	
9527.00	90.310	265.070	7271.43	1481.44	-1543.01	-1484.94	40°22'16.260"N	104°48'34.917"W	1.26	
9619.00	90.680	267.040	7270.64	1573.20	-1549.34	-1576.72	40°22'16.198"N	104°48'36.103"W	2.18	
9712.00	90.490	268.430	7269.69	1666.11	-1553.01	-1669.64	40°22'16.161"N	104°48'37.303"W	1.51	
9805.00	89.230	269.230	7269.91	1759.08	-1554.91	-1762.62	40°22'16.143"N	104°48'38.505"W	1.60	
9897.00	89.230	269.940	7271.15	1851.07	-1555.58	-1854.60	40°22'16.136"N	104°48'39.693"W	0.77	
9990.00	89.110	269.830	7272.50	1944.06	-1555.77	-1947.59	40°22'16.134"N	104°48'40.895"W	0.18	
10083.00	89.350	270.020	7273.75	2037.05	-1555.89	-2040.59	40°22'16.133"N	104°48'42.096"W	0.33	
10176.00	89.450	270.530	7274.72	2130.04	-1555.44	-2133.58	40°22'16.137"N	104°48'43.298"W	0.56	
10269.00	89.600	272.870	7275.49	2223.00	-1552.68	-2226.53	40°22'16.164"N	104°48'44.498"W	2.52	
10361.00	88.650	275.320	7276.90	2314.76	-1546.11	-2318.27	40°22'16.229"N	104°48'45.684"W	2.86	
10454.00	88.710	275.620	7279.04	2407.33	-1537.25	-2410.83	40°22'16.317"N	104°48'46.880"W	0.33	
10547.00	88.680	275.630	7281.16	2499.88	-1528.14	-2503.35	40°22'16.407"N	104°48'48.075"W	0.03	
10640.00	89.050	275.140	7283.00	2592.47	-1519.41	-2595.93	40°22'16.493"N	104°48'49.271"W	0.66	
10733.00	89.290	274.990	7284.35	2685.12	-1511.20	-2688.55	40°22'16.574"N	104°48'50.468"W	0.30	
10826.00	89.230	274.690	7285.55	2777.80	-1503.36	-2781.21	40°22'16.651"N	104°48'51.665"W	0.33	
10919.00	89.350	274.740	7286.70	2870.49	-1495.71	-2873.89	40°22'16.727"N	104°48'52.862"W	0.14	



SRC ENERGY

Actual Wellpath Report

SANFORD 32N-30C-M AWP

Page 6 of 10

**BAKER
HUGHES****REFERENCE WELLPATH IDENTIFICATION**

Operator	SRC ENERGY	Slot	SLOT#27 SANFORD 32N-30C-M (851'FNL & 2392'FWL,SEC.29)
Area	COLORADO	Well	SANFORD 32N-30C-M
Field	WELD COUNTY (NAD83,TRUE NORTH)	Wellbore	SANFORD 32N-30C-M AWB
Facility	SEC.29-T05N-R66W		

WELLPATH DATA (173 stations)

MD [ft]	Inclination [°]	Azimuth [°]	TVD [ft]	Vert Sect [ft]	North [ft]	East [ft]	Latitude	Longitude	DLS [°/100ft]	Comments
11012.00	89.170	272.960	7287.90	2963.28	-1489.47	-2966.67	40°22'16.788"N	104°48'54.061"W	1.92	
11106.00	89.110	271.470	7289.31	3057.21	-1485.84	-3060.59	40°22'16.824"N	104°48'55.274"W	1.59	
11199.00	89.080	269.610	7290.78	3150.19	-1484.96	-3153.57	40°22'16.833"N	104°48'56.476"W	2.00	
11292.00	89.020	268.190	7292.32	3243.15	-1486.74	-3246.53	40°22'16.815"N	104°48'57.677"W	1.53	
11385.00	88.980	267.320	7293.95	3336.06	-1490.39	-3339.45	40°22'16.779"N	104°48'58.877"W	0.94	
11480.00	88.980	267.480	7295.64	3430.93	-1494.70	-3434.34	40°22'16.736"N	104°49'00.103"W	0.17	
11573.00	89.110	266.120	7297.19	3523.76	-1499.89	-3527.17	40°22'16.685"N	104°49'01.303"W	1.47	
11665.00	89.200	267.970	7298.54	3615.62	-1504.63	-3619.04	40°22'16.638"N	104°49'02.490"W	2.01	
11758.00	89.320	270.490	7299.75	3708.59	-1505.88	-3712.01	40°22'16.625"N	104°49'03.691"W	2.71	
11851.00	89.230	270.900	7300.92	3801.58	-1504.75	-3805.00	40°22'16.636"N	104°49'04.892"W	0.45	
11945.00	89.200	269.950	7302.21	3895.57	-1504.05	-3898.99	40°22'16.643"N	104°49'06.106"W	1.01	
12038.00	89.170	269.100	7303.53	3988.55	-1504.82	-3991.97	40°22'16.635"N	104°49'07.308"W	0.91	
12130.00	90.340	269.720	7303.93	4080.54	-1505.77	-4083.97	40°22'16.626"N	104°49'08.496"W	1.44	
12222.00	90.250	269.580	7303.45	4172.54	-1506.33	-4175.96	40°22'16.620"N	104°49'09.685"W	0.18	
12317.00	90.180	268.030	7303.10	4267.51	-1508.31	-4270.94	40°22'16.600"N	104°49'10.912"W	1.63	
12410.00	90.180	267.730	7302.80	4360.43	-1511.75	-4363.88	40°22'16.566"N	104°49'12.113"W	0.32	
12504.00	90.280	266.100	7302.43	4454.28	-1516.81	-4457.74	40°22'16.516"N	104°49'13.325"W	1.74	
12596.00	90.430	268.180	7301.86	4546.15	-1521.40	-4549.61	40°22'16.470"N	104°49'14.512"W	2.27	
12690.00	90.310	267.530	7301.25	4640.07	-1524.92	-4643.55	40°22'16.435"N	104°49'15.726"W	0.70	
12784.00	90.430	268.510	7300.64	4734.01	-1528.17	-4737.49	40°22'16.403"N	104°49'16.940"W	1.05	
12877.00	90.460	270.490	7299.92	4826.99	-1528.98	-4830.48	40°22'16.395"N	104°49'18.141"W	2.13	
12970.00	90.550	271.490	7299.10	4919.98	-1527.37	-4923.46	40°22'16.411"N	104°49'19.342"W	1.08	
13064.00	90.430	271.590	7298.30	5013.95	-1524.85	-5017.42	40°22'16.435"N	104°49'20.556"W	0.17	
13156.00	90.310	272.040	7297.70	5105.90	-1521.93	-5109.37	40°22'16.464"N	104°49'21.744"W	0.51	
13250.00	90.340	272.490	7297.17	5199.84	-1518.22	-5203.30	40°22'16.500"N	104°49'22.958"W	0.48	
13342.00	90.150	273.110	7296.78	5291.74	-1513.73	-5295.18	40°22'16.545"N	104°49'24.145"W	0.70	
13436.00	90.250	273.860	7296.45	5385.57	-1508.01	-5389.01	40°22'16.601"N	104°49'25.357"W	0.80	
13530.00	90.030	272.730	7296.22	5479.43	-1502.61	-5482.85	40°22'16.654"N	104°49'26.570"W	1.22	
13624.00	89.940	272.120	7296.24	5573.35	-1498.63	-5576.77	40°22'16.693"N	104°49'27.783"W	0.66	
13717.00	90.550	271.950	7295.84	5666.30	-1495.33	-5669.71	40°22'16.726"N	104°49'28.984"W	0.68	



SRC ENERGY

Actual Wellpath Report

SANFORD 32N-30C-M AWP

Page 7 of 10



REFERENCE WELLPATH IDENTIFICATION

Operator	SRC ENERGY	Slot	SLOT#27 SANFORD 32N-30C-M (851'FNL & 2392'FWL, SEC.29)
Area	COLORADO	Well	SANFORD 32N-30C-M
Field	WELD COUNTY (NAD83, TRUE NORTH)	Wellbore	SANFORD 32N-30C-M AWB
Facility	SEC.29-T05N-R66W		

WELLPATH DATA (173 stations)

MD [ft]	Inclination [°]	Azimuth [°]	TVD [ft]	Vert Sect [ft]	North [ft]	East [ft]	Latitude	Longitude	DLS [°/100ft]	Comments
13811.00	90.340	271.860	7295.11	5760.25	-1492.20	-5763.65	40°22'16.756"N	104°49'30.198"W	0.24	
13904.00	90.180	271.590	7294.69	5853.21	-1489.40	-5856.61	40°22'16.784"N	104°49'31.399"W	0.34	
13997.00	90.090	270.410	7294.47	5946.20	-1487.78	-5949.59	40°22'16.800"N	104°49'32.600"W	1.27	
14091.00	89.630	269.590	7294.70	6040.20	-1487.78	-6043.59	40°22'16.799"N	104°49'33.815"W	1.00	
14183.00	89.910	269.040	7295.07	6132.19	-1488.88	-6135.58	40°22'16.788"N	104°49'35.003"W	0.67	
14277.00	89.720	268.380	7295.38	6226.16	-1491.00	-6229.56	40°22'16.767"N	104°49'36.217"W	0.73	
14369.00	89.750	268.360	7295.80	6318.12	-1493.61	-6321.52	40°22'16.741"N	104°49'37.405"W	0.04	
14461.00	89.880	267.060	7296.10	6410.03	-1497.29	-6413.45	40°22'16.704"N	104°49'38.593"W	1.42	
14555.00	89.780	266.430	7296.38	6503.87	-1502.63	-6507.29	40°22'16.651"N	104°49'39.805"W	0.68	
14649.00	89.820	269.860	7296.71	6597.80	-1505.67	-6601.23	40°22'16.621"N	104°49'41.019"W	3.65	
14744.00	89.910	273.000	7296.93	6692.76	-1503.30	-6696.19	40°22'16.644"N	104°49'42.246"W	3.31	
14837.00	89.850	274.340	7297.12	6785.58	-1497.35	-6788.99	40°22'16.703"N	104°49'43.445"W	1.44	
14931.00	89.850	274.980	7297.37	6879.28	-1489.71	-6882.68	40°22'16.778"N	104°49'44.656"W	0.68	
15023.00	89.750	275.630	7297.69	6970.91	-1481.20	-6974.29	40°22'16.862"N	104°49'45.839"W	0.71	
15115.00	89.750	274.370	7298.09	7062.57	-1473.19	-7065.93	40°22'16.941"N	104°49'47.023"W	1.37	
15208.00	89.910	271.740	7298.37	7155.44	-1468.23	-7158.79	40°22'16.990"N	104°49'48.223"W	2.83	
15300.00	89.780	272.800	7298.62	7247.38	-1464.59	-7250.72	40°22'17.025"N	104°49'49.411"W	1.16	
15394.00	89.820	274.120	7298.95	7341.22	-1458.91	-7344.55	40°22'17.081"N	104°49'50.623"W	1.40	
15488.00	89.750	274.210	7299.30	7434.98	-1452.09	-7438.30	40°22'17.148"N	104°49'51.834"W	0.12	
15581.00	89.720	273.430	7299.73	7527.79	-1445.89	-7531.09	40°22'17.209"N	104°49'53.033"W	0.84	
15673.00	89.630	271.720	7300.25	7619.70	-1441.76	-7622.99	40°22'17.250"N	104°49'54.220"W	1.86	
15689.00	89.600	271.360	7300.36	7635.69	-1441.33	-7638.98	40°22'17.254"N	104°49'54.427"W	2.26	LAST BH SURVEY (2299'FNL & 81'FWL, SEC.30)
15713.00	89.600	271.360	7300.53	7659.69	-1440.76	-7662.98	40°22'17.260"N	104°49'54.737"W	0.00	PROJ TO BIT (2299'FNL & 57'FWL, SEC.30)



Actual Wellpath Report

SANFORD 32N-30C-M AWP

Page 8 of 10



REFERENCE WELLPATH IDENTIFICATION

Operator	SRC ENERGY	Slot	SLOT#27 SANFORD 32N-30C-M (851'FNL & 2392'FWL,SEC.29)
Area	COLORADO	Well	SANFORD 32N-30C-M
Field	WELD COUNTY (NAD83,TRUE NORTH)	Wellbore	SANFORD 32N-30C-M AWB
Facility	SEC.29-T05N-R66W		

HOLE & CASING SECTIONS - Ref Wellbore: SANFORD 32N-30C-M AWB Ref Wellpath: SANFORD 32N-30C-M AWP

String/Diameter	Start MD [ft]	End MD [ft]	Interval [ft]	Start TVD [ft]	End TVD [ft]	Start N/S [ft]	Start E/W [ft]	End N/S [ft]	End E/W [ft]
9.625in Casing Surface	20.00	1850.00	1830.00	20.00	1813.49	0.00	0.00	-283.91	152.78

TARGETS

Name	TVD [ft]	North [ft]	East [ft]	Grid East [US ft]	Grid North [US ft]	Latitude	Longitude	Shape
SEC.29-T05N-R66W	15.00	238.99	-151.57	3193654.99	1380603.61	40°22'33.870"N	104°48'17.690"W	polygon
SEC.30-T05N-R66W	15.00	238.99	-151.57	3193654.99	1380603.61	40°22'33.870"N	104°48'17.690"W	polygon
SANFORD 32N-30C-M BHL ON PLAT (2324'FNL & 50'FWL,SEC.30)	7244.00	-1465.89	-7669.56	3186150.92	1378839.88	40°22'17.011"N	104°49'54.822"W	point
SANFORD 32N-30C-M BPZ ON PLAT (2324'FNL & 150'FWL,SEC.30)	7244.00	-1466.24	-7569.56	3186250.92	1378840.31	40°22'17.008"N	104°49'53.530"W	point
SANFORD 32N-30C-M TPZ ON PLAT (2334'FNL & 2483'FWL,SEC.29)	7254.00	-1481.97	118.73	3193938.77	1378884.89	40°22'16.864"N	104°48'14.198"W	point
SANFORD 32N-30C-M TPZ REV-1 (2397'FNL & 2483'FWL,SEC.29)	7254.00	-1545.00	118.73	3193939.26	1378821.87	40°22'16.241"N	104°48'14.198"W	point
SANFORD 32N-30C-M TPZ REV-2 (2397'FNL & 2483'FWL,SEC.29)	7269.40	-1545.00	118.73	3193939.26	1378821.87	40°22'16.241"N	104°48'14.198"W	point
SANFORD 4N-30C-M HARDLINE BOX	7290.00	179.97	-1.11	3193805.89	1380545.77	40°22'33.287"N	104°48'15.746"W	polygon
SANFORD 32N-30C-M BHL REV-1 (2324'FNL & 50'FWL,SEC.30)	7299.02	-1465.89	-7669.56	3186150.92	1378839.88	40°22'17.011"N	104°49'54.822"W	point
SANFORD 32N-30C-M BPZ REV-1 (2324'FNL & 150'FWL,SEC.30)	7299.02	-1466.28	-7569.53	3186250.95	1378840.27	40°22'17.008"N	104°49'53.530"W	point



SRC ENERGY

Actual Wellpath Report

SANFORD 32N-30C-M AWP

Page 9 of 10



REFERENCE WELLPATH IDENTIFICATION			
Operator	SRC ENERGY	Slot	SLOT#27 SANFORD 32N-30C-M (851'FNL & 2392'FWL,SEC.29)
Area	COLORADO	Well	SANFORD 32N-30C-M
Field	WELD COUNTY (NAD83,TRUE NORTH)	Wellbore	SANFORD 32N-30C-M AWB
Facility	SEC.29-T05N-R66W		

WELLPATH COMPOSITION - Ref Wellbore: SANFORD 32N-30C-M AWB Ref Wellpath: SANFORD 32N-30C-M AWP				
Start MD [ft]	End MD [ft]	Positional Uncertainty Model	Log Name/Comment	Wellbore
20.00	1801.00	BHI NaviTrak (Axial)	BH/NAVITRAK (AXIAL) 13 1/2" SURFACE HOLE <87'-1785'>	SANFORD 32N-30C-M AWB
1801.00	15689.00	BHI AutoTrak Curve (MagCAD+IRF1, Short spacing)	BH/AUTOTRAK CURVE (MAGCAD+IRF1, SHORT SPACING) 8 1/2" HOLE <1892'- 15689'>	SANFORD 32N-30C-M AWB
15689.00	15713.00	Blind Drilling (std)	Projection to bit	SANFORD 32N-30C-M AWB



SRC ENERGY

Actual Wellpath Report

SANFORD 32N-30C-M AWP

Page 10 of 10



REFERENCE WELLPATH IDENTIFICATION

Operator	SRC ENERGY	Slot	SLOT#27 SANFORD 32N-30C-M (851'FNL & 2392'FWL,SEC.29)
Area	COLORADO	Well	SANFORD 32N-30C-M
Field	WELD COUNTY (NAD83,TRUE NORTH)	Wellbore	SANFORD 32N-30C-M AWB
Facility	SEC.29-T05N-R66W		

WELLPATH COMMENTS

MD [ft]	Inclination [°]	Azimuth [°]	TVD [ft]	Comment
7853.00	82.120	267.790	7258.14	LANDING (2397'FNL & 2552'FWL, SEC.29)
15689.00	89.600	271.360	7300.36	LAST BH SURVEY (2299'FNL & 81'FWL, SEC.30)
15713.00	89.600	271.360	7300.53	PROJ TO BIT (2299'FNL & 57'FWL, SEC.30)