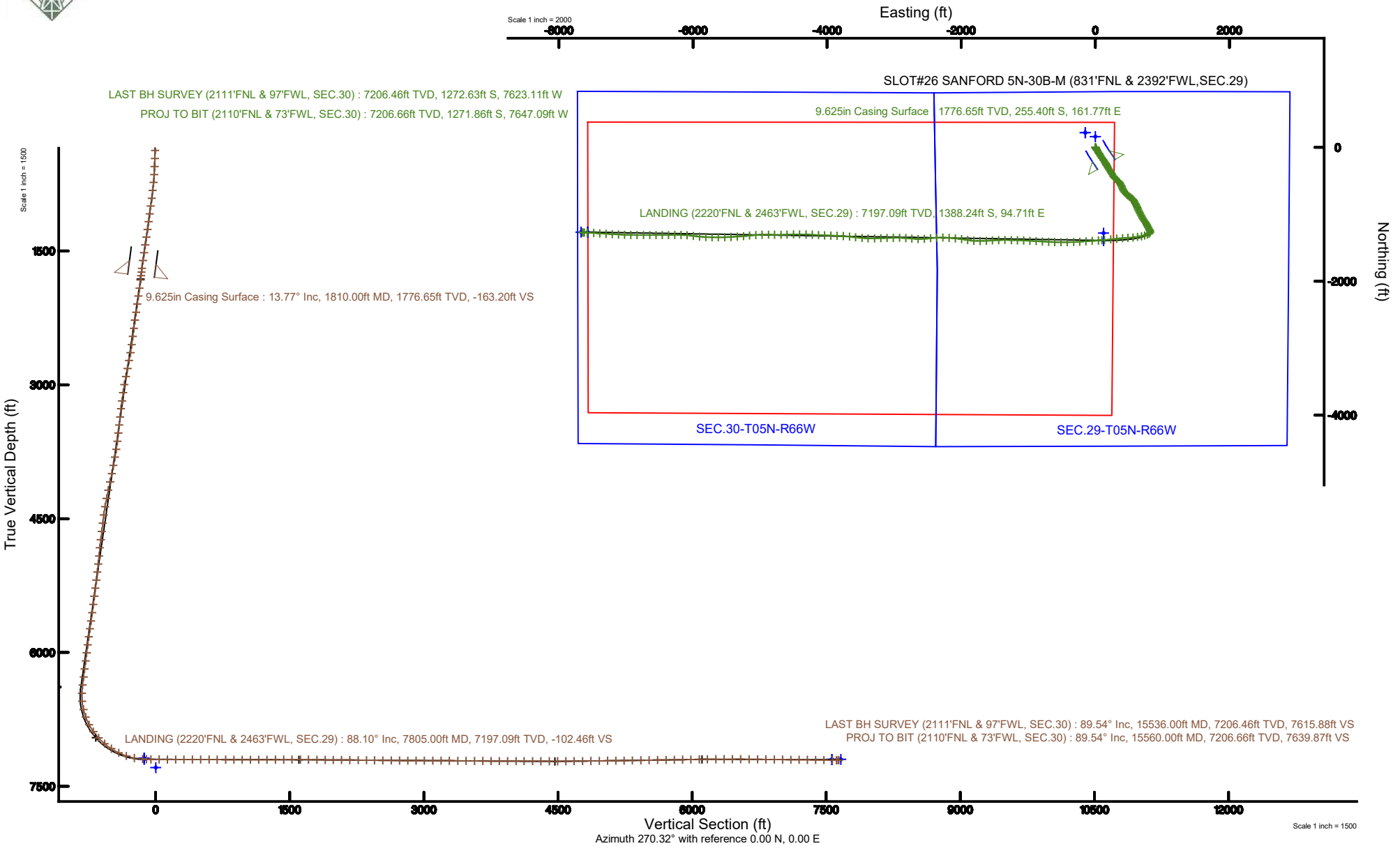


SRC ENERGY

Location: COLORADO Slot: SLOT#26 SANFORD 5N-30B-M (831'FNL & 2392'FWL, SEC.29)
Field: WELD COUNTY (NAD83, TRUE NORTH) Well: SANFORD 5N-30B-M
Facility: SEC.29-T05N-R66W Wellbore: SANFORD 5N-30B-M PWB

Plot reference wellpath is SANFORD 5N-30B-M (REV-B.0) PWP	Grid System: NAD83 / Lambert Colorado SP, Northern Zone (501), US feet
True vertical depths are referenced to PRECISION 462 (20') (RKB)	North Reference: True north
Measured depths are referenced to PRECISION 462 (20') (RKB)	Scale: True distance
PRECISION 462 (20') (RKB) to Mean Sea Level: 4924 feet	Depths are in feet
Mean Sea Level to Mud line (At Slot: SLOT#26 SANFORD 5N-30B-M (831'FNL & 2392'FWL, SEC.29)): 0 feet	Created by: dodanna on 2019-06-18
Coordinates are in feet referenced to Slot	Database: WellArchitectDB





Actual Wellpath Report

SANFORD 5N-30B-M AWP
Page 1 of 9



REFERENCE WELLPATH IDENTIFICATION			
Operator	SRC ENERGY	Slot	SLOT#26 SANFORD 5N-30B-M (831'FNL & 2392'FWL, SEC.29)
Area	COLORADO	Well	SANFORD 5N-30B-M
Field	WELD COUNTY (NAD83, TRUE NORTH)	Wellbore	SANFORD 5N-30B-M AWP
Facility	SEC.29-T05N-R66W		

REPORT SETUP INFORMATION			
Projection System	NAD83 / Lambert Colorado SP, Northern Zone (501), US feet	Software System	WellArchitect® 5.1
North Reference	True	User	Doddanna
Scale	0.999959	Report Generated	6/18/2019 at 2:34:43 PM
Convergence at slot	0.45° East	Database/Source file	WellArchitectDB/SANFORD_5N-30B-M_AWP.xml

	Local coordinates		Grid coordinates		Geographic coordinates	
	North[ft]	East[ft]	Easting[US ft]	Northing[US ft]	Latitude	Longitude
Slot Location	-218.95	151.29	3193807.98	1380385.86	40°22'31.706"N	104°48'15.736"W
Facility Reference Pt			3193654.99	1380603.61	40°22'33.870"N	104°48'17.690"W
Field Reference Pt			3171284.48	1426358.81	40°30'07.643"N	104°53'02.634"W

WELLPATH DATUM			
Calculation method	Minimum curvature	PRECISION 462 (20') (RKB) to Facility Vertical Datum	4924.00ft
Horizontal Reference Pt	Slot	PRECISION 462 (20') (RKB) to Mean Sea Level	4924.00ft
Vertical Reference Pt	PRECISION 462 (20') (RKB)	PRECISION 462 (20') (RKB) to Mud Line at Slot (SLOT#26 SANFORD 5N-30B-M (831'FNL & 2392'FWL, SEC.29))	4924.00ft
MD Reference Pt	PRECISION 462 (20') (RKB)	Section Origin	N 0.00, E 0.00 ft
Field Vertical Reference	Mean Sea Level	Section Azimuth	270.32°



SRC ENERGY

Actual Wellpath Report

SANFORD 5N-30B-M AWP

Page 2 of 9

**BAKER
HUGHES****REFERENCE WELLPATH IDENTIFICATION**

Operator	SRC ENERGY	Slot	SLOT#26 SANFORD 5N-30B-M (831'FNL & 2392'FWL, SEC.29)
Area	COLORADO	Well	SANFORD 5N-30B-M
Field	WELD COUNTY (NAD83, TRUE NORTH)	Wellbore	SANFORD 5N-30B-M AWP
Facility	SEC.29-T05N-R66W		

WELLPATH DATA (172 stations) † = interpolated/extrapolated station

MD [ft]	Inclination [°]	Azimuth [°]	TVD [ft]	Vert Sect [ft]	North [ft]	East [ft]	Latitude	Longitude	DLS [°/100ft]	Comments
0.00†	0.000	133.930	0.00	0.00	0.00	0.00	40°22'31.706"N	104°48'15.736"W	0.00	
20.00	0.000	133.930	20.00	0.00	0.00	0.00	40°22'31.706"N	104°48'15.736"W	0.00	
108.00	0.850	133.930	108.00	-0.47	-0.45	0.47	40°22'31.702"N	104°48'15.730"W	0.97	
198.00	1.040	134.970	197.98	-1.54	-1.49	1.53	40°22'31.692"N	104°48'15.716"W	0.21	
283.00	2.610	148.490	282.94	-3.11	-3.69	3.09	40°22'31.670"N	104°48'15.696"W	1.90	
375.00	3.620	149.370	374.80	-5.71	-7.97	5.66	40°22'31.628"N	104°48'15.662"W	1.10	
465.00	4.260	154.320	464.59	-8.63	-13.43	8.56	40°22'31.574"N	104°48'15.625"W	0.80	
555.00	5.730	158.040	554.24	-11.80	-20.61	11.69	40°22'31.503"N	104°48'15.585"W	1.67	
645.00	7.100	151.510	643.68	-16.18	-29.67	16.02	40°22'31.413"N	104°48'15.529"W	1.72	
735.00	9.420	146.830	732.74	-22.93	-40.72	22.70	40°22'31.304"N	104°48'15.442"W	2.68	
825.00	11.990	147.310	821.17	-32.09	-54.76	31.78	40°22'31.165"N	104°48'15.325"W	2.86	
915.00	13.810	146.630	908.89	-43.14	-71.60	42.74	40°22'30.999"N	104°48'15.183"W	2.03	
1005.00	13.830	147.550	996.29	-54.92	-89.64	54.42	40°22'30.821"N	104°48'15.032"W	0.25	
1095.00	13.770	149.800	1083.69	-66.18	-107.98	65.58	40°22'30.639"N	104°48'14.888"W	0.60	
1185.00	14.060	147.930	1171.05	-77.48	-126.50	76.77	40°22'30.456"N	104°48'14.744"W	0.59	
1275.00	14.600	144.380	1258.25	-89.99	-144.99	89.19	40°22'30.274"N	104°48'14.583"W	1.15	
1365.00	14.510	144.630	1345.36	-103.23	-163.40	102.32	40°22'30.092"N	104°48'14.414"W	0.12	
1455.00	14.520	144.990	1432.49	-116.33	-181.84	115.32	40°22'29.910"N	104°48'14.246"W	0.10	
1545.00	14.370	147.600	1519.65	-128.89	-200.51	127.77	40°22'29.725"N	104°48'14.085"W	0.74	
1635.00	14.480	146.220	1606.81	-141.24	-219.29	140.01	40°22'29.539"N	104°48'13.927"W	0.40	
1725.00	13.700	149.780	1694.10	-152.96	-237.85	151.64	40°22'29.356"N	104°48'13.776"W	1.30	
1770.00	13.860	149.830	1737.81	-158.40	-247.11	157.03	40°22'29.264"N	104°48'13.707"W	0.36	
1860.00	13.660	151.480	1825.22	-169.00	-265.77	167.52	40°22'29.080"N	104°48'13.571"W	0.49	
1954.00	14.770	151.130	1916.34	-180.20	-286.02	178.60	40°22'28.880"N	104°48'13.428"W	1.18	
2046.00	14.790	148.990	2005.30	-192.02	-306.35	190.32	40°22'28.679"N	104°48'13.277"W	0.59	
2139.00	14.730	147.550	2095.23	-204.60	-326.50	202.77	40°22'28.480"N	104°48'13.116"W	0.40	
2235.00	14.910	146.190	2188.04	-218.13	-347.06	216.20	40°22'28.277"N	104°48'12.942"W	0.41	
2326.00	14.650	146.860	2276.03	-231.04	-366.43	229.00	40°22'28.085"N	104°48'12.777"W	0.34	
2420.00	14.770	152.130	2366.95	-243.26	-386.97	241.10	40°22'27.882"N	104°48'12.620"W	1.43	
2514.00	14.700	151.470	2457.86	-254.67	-408.05	252.40	40°22'27.674"N	104°48'12.474"W	0.19	



SRC ENERGY

Actual Wellpath Report

SANFORD 5N-30B-M AWP

Page 3 of 9

**BAKER
HUGHES****REFERENCE WELLPATH IDENTIFICATION**

Operator	SRC ENERGY	Slot	SLOT#26 SANFORD 5N-30B-M (831'FNL & 2392'FWL,SEC.29)
Area	COLORADO	Well	SANFORD 5N-30B-M
Field	WELD COUNTY (NAD83,TRUE NORTH)	Wellbore	SANFORD 5N-30B-M AWP
Facility	SEC.29-T05N-R66W		

WELLPATH DATA (172 stations)

MD [ft]	Inclination [°]	Azimuth [°]	TVD [ft]	Vert Sect [ft]	North [ft]	East [ft]	Latitude	Longitude	DLS [°/100ft]	Comments
2608.00	14.640	146.170	2548.80	-267.10	-428.39	264.71	40°22'27.473"N	104°48'12.315"W	1.43	
2701.00	14.730	141.780	2638.76	-281.06	-447.44	278.57	40°22'27.285"N	104°48'12.136"W	1.20	
2793.00	14.490	133.830	2727.80	-296.70	-464.61	294.11	40°22'27.115"N	104°48'11.936"W	2.19	
2886.00	14.520	131.580	2817.84	-313.90	-480.40	311.22	40°22'26.959"N	104°48'11.714"W	0.61	
2979.00	14.560	127.180	2907.86	-332.02	-495.20	329.26	40°22'26.813"N	104°48'11.481"W	1.19	
3072.00	13.690	135.940	2998.06	-349.07	-510.18	346.23	40°22'26.665"N	104°48'11.262"W	2.48	
3165.00	14.540	146.020	3088.26	-363.35	-527.77	360.41	40°22'26.491"N	104°48'11.079"W	2.79	
3259.00	14.290	148.810	3179.30	-376.06	-547.48	373.01	40°22'26.296"N	104°48'10.916"W	0.79	
3351.00	13.980	152.030	3268.52	-387.26	-567.01	384.10	40°22'26.103"N	104°48'10.773"W	0.92	
3446.00	14.460	156.200	3360.61	-397.55	-587.99	394.27	40°22'25.896"N	104°48'10.641"W	1.19	
3539.00	14.380	158.070	3450.68	-406.67	-609.33	403.27	40°22'25.685"N	104°48'10.525"W	0.51	
3632.00	14.450	154.050	3540.76	-416.18	-630.48	412.66	40°22'25.476"N	104°48'10.404"W	1.08	
3726.00	14.530	150.690	3631.77	-427.20	-651.31	423.57	40°22'25.270"N	104°48'10.263"W	0.90	
3819.00	14.240	142.110	3721.86	-440.04	-670.51	436.30	40°22'25.081"N	104°48'10.098"W	2.31	
3911.00	14.470	137.480	3810.99	-454.86	-687.91	451.02	40°22'24.909"N	104°48'09.908"W	1.27	
4007.00	14.550	134.910	3903.93	-471.60	-705.26	467.67	40°22'24.737"N	104°48'09.693"W	0.68	
4101.00	14.650	130.450	3994.90	-489.10	-721.31	485.08	40°22'24.579"N	104°48'09.468"W	1.20	
4196.00	14.540	121.570	4086.85	-508.48	-735.35	504.38	40°22'24.440"N	104°48'09.219"W	2.36	
4292.00	14.460	122.700	4179.79	-528.90	-748.14	524.73	40°22'24.314"N	104°48'08.956"W	0.31	
4388.00	14.390	130.340	4272.77	-548.16	-762.33	543.91	40°22'24.173"N	104°48'08.708"W	1.98	
4484.00	14.310	137.300	4365.78	-565.39	-778.78	561.05	40°22'24.011"N	104°48'08.487"W	1.80	
4579.00	13.930	148.220	4457.93	-579.48	-797.13	575.04	40°22'23.829"N	104°48'08.306"W	2.83	
4675.00	14.300	155.910	4551.04	-590.52	-817.78	585.97	40°22'23.625"N	104°48'08.165"W	1.99	
4771.00	14.450	151.430	4644.04	-601.21	-839.12	596.53	40°22'23.414"N	104°48'08.028"W	1.17	
4867.00	14.950	149.980	4736.89	-613.25	-860.36	608.46	40°22'23.205"N	104°48'07.874"W	0.65	
4960.00	14.970	159.070	4826.75	-623.67	-881.97	618.75	40°22'22.991"N	104°48'07.741"W	2.52	
5054.00	15.130	158.150	4917.53	-632.70	-904.70	627.65	40°22'22.766"N	104°48'07.626"W	0.31	
5147.00	14.980	156.810	5007.34	-642.07	-927.01	636.90	40°22'22.546"N	104°48'07.507"W	0.41	
5241.00	14.970	153.350	5098.15	-652.42	-949.03	647.13	40°22'22.328"N	104°48'07.375"W	0.95	
5334.00	14.820	153.540	5188.02	-663.23	-970.41	657.82	40°22'22.117"N	104°48'07.236"W	0.17	



SRC ENERGY

Actual Wellpath Report

SANFORD 5N-30B-M AWP

Page 4 of 9

BAKER
HUGHES

REFERENCE WELLPATH IDENTIFICATION

Operator	SRC ENERGY	Slot	SLOT#26 SANFORD 5N-30B-M (831'FNL & 2392'FWL, SEC.29)
Area	COLORADO	Well	SANFORD 5N-30B-M
Field	WELD COUNTY (NAD83, TRUE NORTH)	Wellbore	SANFORD 5N-30B-M AWB
Facility	SEC.29-T05N-R66W		

WELLPATH DATA (172 stations) † = interpolated/extrapolated station

MD [ft]	Inclination [°]	Azimuth [°]	TVD [ft]	Vert Sect [ft]	North [ft]	East [ft]	Latitude	Longitude	DLS [°/100ft]	Comments
5427.00	15.040	152.780	5277.88	-674.17	-991.79	668.64	40°22'21.906"N	104°48'07.097"W	0.32	
5521.00	14.740	151.500	5368.73	-685.57	-1013.14	679.93	40°22'21.695"N	104°48'06.951"W	0.47	
5617.00	14.770	150.570	5461.56	-697.53	-1034.54	691.77	40°22'21.483"N	104°48'06.798"W	0.25	
5713.00	15.010	151.780	5554.34	-709.54	-1056.15	703.66	40°22'21.270"N	104°48'06.644"W	0.41	
5807.00	14.410	149.660	5645.26	-721.32	-1076.97	715.32	40°22'21.064"N	104°48'06.494"W	0.86	
5899.00	14.420	144.630	5734.36	-733.85	-1096.19	727.73	40°22'20.874"N	104°48'06.333"W	1.36	
5992.00	14.350	142.720	5824.45	-747.63	-1114.80	741.42	40°22'20.690"N	104°48'06.156"W	0.52	
6085.00	14.550	152.120	5914.52	-760.19	-1134.30	753.86	40°22'20.497"N	104°48'05.996"W	2.53	
6178.00	14.480	153.620	6004.55	-770.93	-1155.04	764.49	40°22'20.293"N	104°48'05.858"W	0.41	
6271.00	14.060	149.200	6094.68	-781.99	-1175.16	775.44	40°22'20.094"N	104°48'05.717"W	1.26	
6363.00	14.650	150.550	6183.81	-793.55	-1194.89	786.89	40°22'19.899"N	104°48'05.569"W	0.74	
6457.00	14.590	151.450	6274.77	-805.17	-1215.64	798.39	40°22'19.694"N	104°48'05.420"W	0.25	
6550.00	14.510	147.890	6364.79	-817.07	-1235.80	810.18	40°22'19.494"N	104°48'05.268"W	0.97	
6644.00	11.720	171.190	6456.39	-824.91	-1255.23	817.91	40°22'19.303"N	104°48'05.168"W	6.30	
6736.00	11.680	209.150	6546.61	-821.89	-1272.62	814.80	40°22'19.131"N	104°48'05.208"W	8.22	
6830.00	16.090	230.600	6637.90	-807.27	-1289.22	800.08	40°22'18.967"N	104°48'05.399"W	7.14	
6922.00	22.280	245.740	6724.80	-781.56	-1304.50	774.29	40°22'18.816"N	104°48'05.732"W	8.58	
7015.00	28.950	254.510	6808.64	-743.82	-1317.77	736.47	40°22'18.684"N	104°48'06.220"W	8.23	
7107.00	35.840	259.710	6886.29	-695.85	-1328.55	688.44	40°22'18.578"N	104°48'06.841"W	8.07	
7200.00	43.570	261.480	6957.79	-637.33	-1338.17	629.87	40°22'18.483"N	104°48'07.598"W	8.40	
7294.00	49.980	264.260	7022.14	-569.45	-1346.58	561.94	40°22'18.400"N	104°48'08.475"W	7.15	
7388.00	57.040	266.990	7078.01	-494.19	-1352.26	486.64	40°22'18.344"N	104°48'09.448"W	7.86	
7483.00	63.720	265.830	7124.94	-411.84	-1357.46	404.27	40°22'18.292"N	104°48'10.512"W	7.11	
7575.00	71.710	263.290	7159.81	-327.23	-1365.57	319.61	40°22'18.212"N	104°48'11.606"W	9.05	
7668.00	79.040	263.510	7183.27	-237.96	-1375.91	230.28	40°22'18.110"N	104°48'12.760"W	7.89	
7762.00	86.520	265.400	7195.08	-145.26	-1384.90	137.53	40°22'18.021"N	104°48'13.959"W	8.20	
7805.00†	88.104	265.676	7197.09	-102.46	-1388.24	94.71	40°22'17.988"N	104°48'14.512"W	3.74	LANDING (2220'FNL & 2463'FWL, SEC.29)
7854.00	89.910	265.990	7197.94	-53.62	-1391.80	45.85	40°22'17.953"N	104°48'15.143"W	3.74	
7947.00	89.720	266.360	7198.24	39.14	-1398.00	-46.95	40°22'17.892"N	104°48'16.342"W	0.45	
8040.00	89.820	266.420	7198.62	131.92	-1403.86	-139.76	40°22'17.834"N	104°48'17.541"W	0.13	



SRC ENERGY

Actual Wellpath Report

SANFORD 5N-30B-M AWP

Page 5 of 9

BAKER
HUGHES

REFERENCE WELLPATH IDENTIFICATION

Operator	SRC ENERGY	Slot	SLOT#26 SANFORD 5N-30B-M (831'FNL & 2392'FWL,SEC.29)
Area	COLORADO	Well	SANFORD 5N-30B-M
Field	WELD COUNTY (NAD83,TRUE NORTH)	Wellbore	SANFORD 5N-30B-M AWP
Facility	SEC.29-T05N-R66W		

WELLPATH DATA (172 stations)

MD [ft]	Inclination [°]	Azimuth [°]	TVD [ft]	Vert Sect [ft]	North [ft]	East [ft]	Latitude	Longitude	DLS [°/100ft]	Comments
8133.00	89.630	266.600	7199.06	224.71	-1409.52	-232.59	40°22'17.778"N	104°48'18.741"W	0.28	
8225.00	89.720	267.610	7199.58	316.56	-1414.17	-324.47	40°22'17.732"N	104°48'19.928"W	1.10	
8319.00	89.970	269.390	7199.84	410.51	-1416.63	-418.43	40°22'17.708"N	104°48'21.142"W	1.91	
8413.00	89.820	270.130	7200.01	504.51	-1417.02	-512.43	40°22'17.704"N	104°48'22.356"W	0.80	
8506.00	89.910	271.780	7200.23	597.50	-1415.47	-605.41	40°22'17.719"N	104°48'23.558"W	1.78	
8598.00	89.780	272.930	7200.48	689.44	-1411.69	-697.33	40°22'17.756"N	104°48'24.745"W	1.26	
8691.00	90.060	273.800	7200.61	782.31	-1406.23	-790.17	40°22'17.810"N	104°48'25.945"W	0.98	
8784.00	89.350	272.940	7201.09	875.17	-1400.76	-883.01	40°22'17.864"N	104°48'27.144"W	1.20	
8877.00	89.720	272.610	7201.84	968.08	-1396.26	-975.90	40°22'17.909"N	104°48'28.344"W	0.53	
8969.00	90.150	272.740	7201.95	1060.00	-1391.97	-1067.80	40°22'17.951"N	104°48'29.531"W	0.49	
9062.00	90.180	271.390	7201.68	1152.96	-1388.62	-1160.73	40°22'17.984"N	104°48'30.732"W	1.45	
9155.00	90.250	271.690	7201.33	1245.94	-1386.12	-1253.70	40°22'18.009"N	104°48'31.933"W	0.33	
9249.00	90.250	270.010	7200.92	1339.93	-1384.72	-1347.68	40°22'18.023"N	104°48'33.148"W	1.79	
9342.00	90.340	268.260	7200.44	1432.90	-1386.13	-1440.67	40°22'18.009"N	104°48'34.349"W	1.88	
9435.00	90.150	266.310	7200.04	1525.77	-1390.53	-1533.56	40°22'17.965"N	104°48'35.549"W	2.11	
9528.00	89.940	266.830	7199.97	1618.57	-1396.10	-1626.39	40°22'17.910"N	104°48'36.749"W	0.60	
9620.00	89.480	269.930	7200.44	1710.50	-1398.70	-1718.34	40°22'17.884"N	104°48'37.936"W	3.41	
9713.00	88.950	273.610	7201.71	1803.45	-1395.83	-1811.27	40°22'17.913"N	104°48'39.137"W	4.00	
9806.00	89.080	279.250	7203.31	1895.87	-1385.42	-1903.64	40°22'18.015"N	104°48'40.331"W	6.07	
9898.00	89.820	278.420	7204.19	1986.85	-1371.29	-1994.54	40°22'18.155"N	104°48'41.505"W	1.21	
9991.00	89.660	275.860	7204.62	2079.18	-1359.73	-2086.81	40°22'18.269"N	104°48'42.697"W	2.76	
10084.00	89.450	273.790	7205.34	2171.89	-1351.91	-2179.47	40°22'18.346"N	104°48'43.894"W	2.24	
10178.00	89.450	270.950	7206.24	2265.81	-1348.02	-2273.38	40°22'18.385"N	104°48'45.108"W	3.02	
10270.00	89.600	267.090	7207.00	2357.77	-1349.59	-2365.34	40°22'18.369"N	104°48'46.296"W	4.20	
10362.00	89.450	263.750	7207.77	2449.42	-1356.94	-2457.03	40°22'18.296"N	104°48'47.480"W	3.63	
10455.00	89.350	264.500	7208.74	2541.87	-1366.46	-2549.54	40°22'18.202"N	104°48'48.676"W	0.81	
10548.00	89.450	272.050	7209.72	2634.74	-1369.25	-2642.43	40°22'18.174"N	104°48'49.876"W	8.12	
10641.00	89.480	275.200	7210.58	2727.57	-1363.38	-2735.22	40°22'18.232"N	104°48'51.075"W	3.39	
10734.00	89.940	274.450	7211.06	2820.28	-1355.55	-2827.89	40°22'18.310"N	104°48'52.272"W	0.95	
10827.00	89.940	270.900	7211.15	2913.18	-1351.21	-2920.78	40°22'18.352"N	104°48'53.472"W	3.82	



SRC ENERGY

Actual Wellpath Report

SANFORD 5N-30B-M AWP

Page 6 of 9



**BAKER
HUGHES**

REFERENCE WELLPATH IDENTIFICATION

Operator	SRC ENERGY	Slot	SLOT#26 SANFORD 5N-30B-M (831'FNL & 2392'FWL,SEC.29)
Area	COLORADO	Well	SANFORD 5N-30B-M
Field	WELD COUNTY (NAD83,TRUE NORTH)	Wellbore	SANFORD 5N-30B-M AWP
Facility	SEC.29-T05N-R66W		

WELLPATH DATA (172 stations)

MD [ft]	Inclination [°]	Azimuth [°]	TVD [ft]	Vert Sect [ft]	North [ft]	East [ft]	Latitude	Longitude	DLS [°/100ft]	Comments
10920.00	89.750	268.400	7211.40	3006.17	-1351.78	-3013.77	40°22'18.347"N	104°48'54.673"W	2.70	
11013.00	89.750	268.080	7211.81	3099.11	-1354.64	-3106.72	40°22'18.318"N	104°48'55.874"W	0.34	
11106.00	89.690	268.100	7212.26	3192.04	-1357.74	-3199.67	40°22'18.288"N	104°48'57.075"W	0.07	
11200.00	89.510	268.940	7212.92	3285.99	-1360.16	-3293.63	40°22'18.264"N	104°48'58.289"W	0.91	
11294.00	89.600	271.770	7213.65	3379.97	-1359.58	-3387.62	40°22'18.269"N	104°48'59.504"W	3.01	
11387.00	89.230	275.100	7214.60	3472.82	-1354.01	-3480.43	40°22'18.324"N	104°49'00.703"W	3.60	
11482.00	89.850	276.670	7215.36	3567.36	-1344.27	-3574.93	40°22'18.420"N	104°49'01.924"W	1.78	
11574.00	89.750	275.980	7215.68	3658.86	-1334.14	-3666.37	40°22'18.520"N	104°49'03.105"W	0.76	
11666.00	89.750	274.330	7216.09	3750.53	-1325.87	-3757.99	40°22'18.602"N	104°49'04.289"W	1.79	
11759.00	89.850	271.930	7216.41	3843.41	-1320.79	-3850.84	40°22'18.652"N	104°49'05.488"W	2.58	
11853.00	89.630	270.890	7216.84	3937.39	-1318.48	-3944.81	40°22'18.674"N	104°49'06.703"W	1.13	
11946.00	89.780	273.060	7217.32	4030.34	-1315.28	-4037.75	40°22'18.706"N	104°49'07.903"W	2.34	
12038.00	90.150	273.440	7217.37	4122.22	-1310.06	-4129.60	40°22'18.757"N	104°49'09.090"W	0.58	
12131.00	89.820	272.250	7217.40	4215.13	-1305.44	-4222.49	40°22'18.803"N	104°49'10.290"W	1.33	
12224.00	89.630	271.980	7217.84	4308.08	-1302.01	-4315.42	40°22'18.837"N	104°49'11.491"W	0.35	
12318.00	90.000	270.710	7218.15	4402.07	-1299.80	-4409.39	40°22'18.858"N	104°49'12.705"W	1.41	
12411.00	89.880	268.280	7218.24	4495.05	-1300.62	-4502.38	40°22'18.850"N	104°49'13.906"W	2.62	
12505.00	90.550	267.140	7217.89	4588.95	-1304.38	-4596.30	40°22'18.813"N	104°49'15.120"W	1.41	
12597.00	90.430	270.030	7217.10	4680.89	-1306.65	-4688.26	40°22'18.790"N	104°49'16.308"W	3.14	
12692.00	90.520	270.970	7216.32	4775.89	-1305.82	-4783.26	40°22'18.798"N	104°49'17.535"W	0.99	
12784.00	90.740	270.750	7215.31	4867.88	-1304.44	-4875.24	40°22'18.812"N	104°49'18.724"W	0.34	
12879.00	90.580	268.160	7214.21	4962.85	-1305.35	-4970.22	40°22'18.802"N	104°49'19.951"W	2.73	
12972.00	90.520	265.940	7213.32	5055.69	-1310.13	-5063.09	40°22'18.755"N	104°49'21.151"W	2.39	
13065.00	90.620	264.330	7212.39	5148.30	-1318.02	-5155.74	40°22'18.677"N	104°49'22.348"W	1.73	
13157.00	90.830	265.100	7211.23	5239.86	-1326.49	-5247.35	40°22'18.593"N	104°49'23.531"W	0.87	
13250.00	90.950	266.490	7209.78	5332.55	-1333.31	-5340.08	40°22'18.525"N	104°49'24.729"W	1.50	
13344.00	90.920	267.280	7208.25	5426.37	-1338.42	-5433.93	40°22'18.475"N	104°49'25.942"W	0.84	
13437.00	91.020	268.130	7206.68	5519.26	-1342.14	-5526.84	40°22'18.438"N	104°49'27.142"W	0.92	
13532.00	90.770	269.310	7205.19	5614.21	-1344.26	-5621.80	40°22'18.417"N	104°49'28.369"W	1.27	
13626.00	90.770	271.290	7203.93	5708.20	-1343.77	-5715.79	40°22'18.421"N	104°49'29.583"W	2.11	



SRC ENERGY

Actual Wellpath Report

SANFORD 5N-30B-M AWP

Page 7 of 9



REFERENCE WELLPATH IDENTIFICATION

Operator	SRC ENERGY	Slot	SLOT#26 SANFORD 5N-30B-M (831'FNL & 2392'FWL, SEC.29)
Area	COLORADO	Well	SANFORD 5N-30B-M
Field	WELD COUNTY (NAD83, TRUE NORTH)	Wellbore	SANFORD 5N-30B-M AWB
Facility	SEC.29-T05N-R66W		

WELLPATH DATA (172 stations)

MD [ft]	Inclination [°]	Azimuth [°]	TVD [ft]	Vert Sect [ft]	North [ft]	East [ft]	Latitude	Longitude	DLS [°/100ft]	Comments
13719.00	91.020	273.520	7202.48	5801.12	-1339.87	-5808.69	40°22'18.459"N	104°49'30.784"W	2.41	
13812.00	90.860	274.660	7200.95	5893.90	-1333.24	-5901.44	40°22'18.525"N	104°49'31.982"W	1.24	
13905.00	90.890	278.030	7199.53	5986.36	-1322.96	-5993.85	40°22'18.626"N	104°49'33.176"W	3.62	
13999.00	90.860	273.710	7198.09	6079.89	-1313.35	-6087.32	40°22'18.721"N	104°49'34.384"W	4.60	
14091.00	90.990	271.470	7196.61	6171.80	-1309.19	-6179.21	40°22'18.762"N	104°49'35.571"W	2.44	
14184.00	89.910	269.220	7195.88	6264.79	-1308.63	-6272.20	40°22'18.767"N	104°49'36.772"W	2.68	
14278.00	90.120	270.050	7195.85	6358.78	-1309.23	-6366.19	40°22'18.761"N	104°49'37.987"W	0.91	
14370.00	90.180	269.940	7195.61	6450.78	-1309.24	-6458.19	40°22'18.761"N	104°49'39.175"W	0.14	
14462.00	89.940	269.580	7195.52	6542.78	-1309.63	-6550.19	40°22'18.757"N	104°49'40.364"W	0.47	
14556.00	89.230	269.720	7196.20	6636.77	-1310.20	-6644.19	40°22'18.751"N	104°49'41.578"W	0.77	
14651.00	89.420	270.310	7197.32	6731.76	-1310.18	-6739.18	40°22'18.751"N	104°49'42.806"W	0.65	
14745.00	89.290	270.650	7198.37	6825.75	-1309.39	-6833.17	40°22'18.758"N	104°49'44.020"W	0.39	
14839.00	89.510	270.440	7199.36	6919.74	-1308.49	-6927.16	40°22'18.767"N	104°49'45.235"W	0.32	
14932.00	89.260	272.470	7200.36	7012.72	-1306.13	-7020.12	40°22'18.790"N	104°49'46.436"W	2.20	
15024.00	89.450	272.890	7201.39	7104.63	-1301.83	-7112.01	40°22'18.832"N	104°49'47.623"W	0.50	
15116.00	89.660	273.230	7202.11	7196.52	-1296.92	-7203.88	40°22'18.880"N	104°49'48.810"W	0.43	
15209.00	89.290	273.240	7202.96	7289.40	-1291.67	-7296.73	40°22'18.932"N	104°49'50.009"W	0.40	
15301.00	89.480	274.450	7203.95	7381.22	-1285.50	-7388.51	40°22'18.993"N	104°49'51.195"W	1.33	
15394.00	89.420	273.990	7204.84	7474.00	-1278.66	-7481.26	40°22'19.060"N	104°49'52.394"W	0.50	
15489.00	89.230	271.590	7205.96	7568.90	-1274.04	-7576.13	40°22'19.105"N	104°49'53.619"W	2.53	
15536.00	89.540	271.840	7206.46	7615.88	-1272.63	-7623.11	40°22'19.119"N	104°49'54.226"W	0.85	LAST BH SURVEY (2111'FNL & 97'FWL, SEC.30)
15560.00	89.540	271.840	7206.66	7639.87	-1271.86	-7647.09	40°22'19.127"N	104°49'54.536"W	0.00	PROJ TO BIT (2110'FNL & 73'FWL, SEC.30)

HOLE & CASING SECTIONS - Ref Wellbore: SANFORD 5N-30B-M AWB Ref Wellpath: SANFORD 5N-30B-M AWP

String/Diameter	Start MD [ft]	End MD [ft]	Interval [ft]	Start TVD [ft]	End TVD [ft]	Start N/S [ft]	Start E/W [ft]	End N/S [ft]	End E/W [ft]
9.625in Casing Surface	20.00	1810.00	1790.00	20.00	1776.65	0.00	0.00	-255.40	161.77



SRC ENERGY

Actual Wellpath Report

SANFORD 5N-30B-M AWP

Page 8 of 9

BAKER
HUGHES

REFERENCE WELLPATH IDENTIFICATION

Operator	SRC ENERGY	Slot	SLOT#26 SANFORD 5N-30B-M (831'FNL & 2392'FWL,SEC.29)
Area	COLORADO	Well	SANFORD 5N-30B-M
Field	WELD COUNTY (NAD83,TRUE NORTH)	Wellbore	SANFORD 5N-30B-M AWB
Facility	SEC.29-T05N-R66W		

TARGETS

Name	TVD [ft]	North [ft]	East [ft]	Grid East [US ft]	Grid North [US ft]	Latitude	Longitude	Shape
SEC.29-T05N-R66W	15.00	218.95	-151.29	3193654.99	1380603.61	40°22'33.870"N	104°48'17.690"W	polygon
SEC.30-T05N-R66W	15.00	218.95	-151.29	3193654.99	1380603.61	40°22'33.870"N	104°48'17.690"W	polygon
SANFORD 5N-30B-M TPZ ON PLAT (2113'FNL & 2489'FWL,SEC.29)	7184.00	-1281.30	121.18	3193939.20	1379105.60	40°22'19.045"N	104°48'14.170"W	point
SANFORD 5N-30B-M TPZ REV-1 (2223'FNL & 2489'FWL,SEC.29)	7184.00	-1391.00	121.18	3193940.06	1378995.91	40°22'17.961"N	104°48'14.170"W	point
SANFORD 5N-30B-M TPZ REV-2 (2223'FNL & 2489'FWL,SEC.29)	7197.43	-1391.00	121.18	3193940.06	1378995.91	40°22'17.961"N	104°48'14.170"W	point
SANFORD 5N-30B-M BHL ON PLAT (2104'FNL & 50'FWL,SEC.30)	7198.00	-1266.25	-7669.77	3186148.71	1379059.54	40°22'19.182"N	104°49'54.829"W	point
SANFORD 5N-30B-M BPZ ON PLAT (2104'FNL & 150'FWL,SEC.30)	7198.00	-1266.28	-7569.76	3186248.72	1379060.29	40°22'19.182"N	104°49'53.537"W	point
SANFORD 5N-30B-M BPZ REV-1 (2104'FNL & 150'FWL,SEC.30)	7199.84	-1266.28	-7569.76	3186248.72	1379060.29	40°22'19.182"N	104°49'53.537"W	point
SANFORD 4N-30C-M HARDLINE BOX	7290.00	159.93	-0.84	3193805.89	1380545.77	40°22'33.287"N	104°48'15.746"W	polygon

WELLPATH COMPOSITION - Ref Wellbore: SANFORD 5N-30B-M AWB Ref Wellpath: SANFORD 5N-30B-M AWP

Start MD [ft]	End MD [ft]	Positional Uncertainty Model	Log Name/Comment	Wellbore
20.00	1770.00	BHI NaviTrak (Axial)	BH/NAVITRAK (AXIAL) 13 1/2" SURFACE HOLE <108'-1770'>	SANFORD 5N-30B-M AWB
1770.00	15536.00	BHI AutoTrak Curve (MagCAD+IFR1, Short spacing)	BH/AUTOTRAK CURVE (MAGCAD+IRF1, SHORT SPACING) 8 1/2" HOLE <1860'- 15536'>	SANFORD 5N-30B-M AWB
15536.00	15560.00	Blind Drilling (std)	Projection to bit	SANFORD 5N-30B-M AWB



SRC ENERGY

Actual Wellpath Report

SANFORD 5N-30B-M AWP

Page 9 of 9



REFERENCE WELLPATH IDENTIFICATION

Operator	SRC ENERGY	Slot	SLOT#26 SANFORD 5N-30B-M (831'FNL & 2392'FWL,SEC.29)
Area	COLORADO	Well	SANFORD 5N-30B-M
Field	WELD COUNTY (NAD83,TRUE NORTH)	Wellbore	SANFORD 5N-30B-M AWB
Facility	SEC.29-T05N-R66W		

WELLPATH COMMENTS

MD [ft]	Inclination [°]	Azimuth [°]	TVD [ft]	Comment
7805.00	88.104	265.676	7197.09	LANDING (2220'FNL & 2463'FWL, SEC.29)
15536.00	89.540	271.840	7206.46	LAST BH SURVEY (2111'FNL & 97'FWL, SEC.30)
15560.00	89.540	271.840	7206.66	PROJ TO BIT (2110'FNL & 73'FWL, SEC.30)