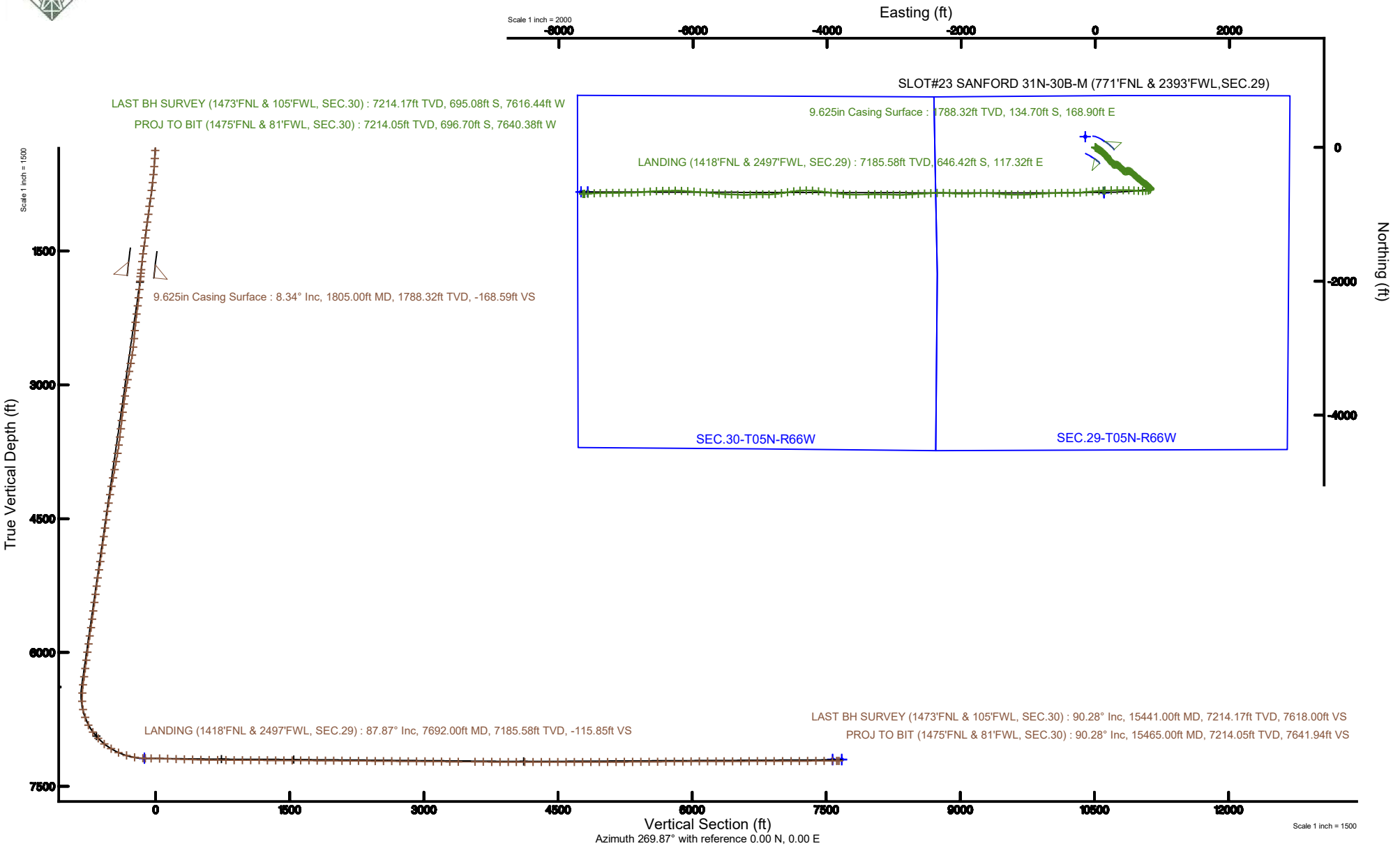


# SRC ENERGY

Location: COLORADO Slot: SLOT#23 SANFORD 31N-30B-M (771'FNL & 2393'FWL,SEC.29)  
Field: WELD COUNTY (NAD83,TRUE NORTH) Well: SANFORD 31N-30B-M  
Facility: SEC.29-T05N-R66W Wellbore: SANFORD 31N-30B-M PWB

Plot reference wellpath is SANFORD 31N-30B-M (REV-C.0) PWP	Grid System: NAD83 / Lambert Colorado SP, Northern Zone (501), US feet
True vertical depths are referenced to PRECISION 462 (20') (RKB)	North Reference: True north
Measured depths are referenced to PRECISION 462 (20') (RKB)	Scale: True distance
PRECISION 462 (20') (RKB) to Mean Sea Level: 4924 feet	Depths are in feet
Mean Sea Level to Mud line (At Slot: SLOT#23 SANFORD 31N-30B-M (771'FNL & 2393'FWL,SEC.29)): 0 feet	Created by: doddanna on 2019-06-18
Coordinates are in feet referenced to Slot	Database: WellArchitectDB





# Actual Wellpath Report

SANFORD 31N-30B-M AWP

Page 1 of 9



## REFERENCE WELLPATH IDENTIFICATION

Operator	SRC ENERGY	Slot	SLOT#23 SANFORD 31N-30B-M (771'FNL & 2393'FWL,SEC.29)
Area	COLORADO	Well	SANFORD 31N-30B-M
Field	WELD COUNTY (NAD83,TRUE NORTH)	Wellbore	SANFORD 31N-30B-M AWP
Facility	SEC.29-T05N-R66W		

## REPORT SETUP INFORMATION

Projection System	NAD83 / Lambert Colorado SP, Northern Zone (501), US feet	Software System	WellArchitect® 5.1
North Reference	True	User	Doddanna
Scale	0.999959	Report Generated	6/18/2019 at 2:11:40 PM
Convergence at slot	0.45° East	Database/Source file	WellArchitectDB/SANFORD_31N-30B-M_AWP.xml

## WELLPATH LOCATION

	Local coordinates		Grid coordinates		Geographic coordinates	
	North[ft]	East[ft]	Easting[US ft]	Northing[US ft]	Latitude	Longitude
Slot Location	-159.20	151.01	3193807.24	1380445.60	40°22'32.297"N	104°48'15.739"W
Facility Reference Pt			3193654.99	1380603.61	40°22'33.870"N	104°48'17.690"W
Field Reference Pt			3171284.48	1426358.81	40°30'07.643"N	104°53'02.634"W

## WELLPATH DATUM

Calculation method	Minimum curvature	PRECISION 462 (20') (RKB) to Facility Vertical Datum	4924.00ft
Horizontal Reference Pt	Slot	PRECISION 462 (20') (RKB) to Mean Sea Level	4924.00ft
Vertical Reference Pt	PRECISION 462 (20') (RKB)	PRECISION 462 (20') (RKB) to Mud Line at Slot (SLOT#23 SANFORD 31N-30B-M (771'FNL & 2393'FWL,SEC.29))	4924.00ft
MD Reference Pt	PRECISION 462 (20') (RKB)	Section Origin	N 0.00, E 0.00 ft
Field Vertical Reference	Mean Sea Level	Section Azimuth	269.87°



SRC ENERGY

## Actual Wellpath Report

SANFORD 31N-30B-M AWP

Page 2 of 9

BAKER  
HUGHES

## REFERENCE WELLPATH IDENTIFICATION

Operator	SRC ENERGY	Slot	SLOT#23 SANFORD 31N-30B-M (771'FNL & 2393'FWL,SEC.29)
Area	COLORADO	Well	SANFORD 31N-30B-M
Field	WELD COUNTY (NAD83,TRUE NORTH)	Wellbore	SANFORD 31N-30B-M AWB
Facility	SEC.29-T05N-R66W		

## WELLPATH DATA (170 stations) † = interpolated/extrapolated station

MD [ft]	Inclination [°]	Azimuth [°]	TVD [ft]	Vert Sect [ft]	North [ft]	East [ft]	Latitude	Longitude	DLS [°/100ft]	Comments
0.00†	0.000	93.590	0.00	0.00	0.00	0.00	40°22'32.297"N	104°48'15.739"W	0.00	
20.00	0.000	93.590	20.00	0.00	0.00	0.00	40°22'32.297"N	104°48'15.739"W	0.00	
108.00	0.150	93.590	108.00	-0.11	-0.01	0.11	40°22'32.297"N	104°48'15.738"W	0.17	
198.00	0.370	105.910	198.00	-0.51	-0.09	0.51	40°22'32.296"N	104°48'15.733"W	0.25	
283.00	1.050	131.690	282.99	-1.36	-0.69	1.36	40°22'32.290"N	104°48'15.722"W	0.86	
375.00	3.370	129.550	374.92	-4.07	-2.97	4.07	40°22'32.267"N	104°48'15.687"W	2.52	
465.00	4.510	117.900	464.70	-9.23	-6.31	9.24	40°22'32.234"N	104°48'15.620"W	1.54	
555.00	5.750	127.050	554.34	-15.94	-10.68	15.97	40°22'32.191"N	104°48'15.533"W	1.65	
645.00	6.800	125.120	643.80	-23.88	-16.46	23.92	40°22'32.134"N	104°48'15.430"W	1.19	
735.00	8.330	125.240	733.02	-33.55	-23.29	33.61	40°22'32.067"N	104°48'15.305"W	1.70	
825.00	8.610	124.280	822.04	-44.43	-30.85	44.50	40°22'31.992"N	104°48'15.164"W	0.35	
915.00	9.420	118.430	910.93	-56.45	-38.15	56.54	40°22'31.920"N	104°48'15.009"W	1.36	
1005.00	9.200	120.220	999.74	-69.13	-45.28	69.23	40°22'31.849"N	104°48'14.845"W	0.40	
1095.00	8.770	126.180	1088.64	-80.87	-52.95	80.99	40°22'31.774"N	104°48'14.693"W	1.14	
1185.00	9.940	125.540	1177.44	-92.71	-61.51	92.85	40°22'31.689"N	104°48'14.540"W	1.31	
1275.00	10.180	131.480	1266.06	-104.97	-71.30	105.13	40°22'31.592"N	104°48'14.381"W	1.18	
1365.00	10.020	132.390	1354.66	-116.68	-81.84	116.87	40°22'31.488"N	104°48'14.229"W	0.25	
1455.00	10.420	132.590	1443.23	-128.43	-92.63	128.64	40°22'31.381"N	104°48'14.077"W	0.45	
1545.00	10.330	134.660	1531.76	-140.14	-103.81	140.38	40°22'31.271"N	104°48'13.925"W	0.43	
1635.00	9.800	140.050	1620.38	-150.77	-115.35	151.03	40°22'31.157"N	104°48'13.788"W	1.20	
1725.00	8.560	136.740	1709.23	-160.26	-126.10	160.54	40°22'31.051"N	104°48'13.665"W	1.50	
1766.00	8.790	134.930	1749.76	-164.56	-130.54	164.85	40°22'31.007"N	104°48'13.609"W	0.87	
1858.00	7.740	139.580	1840.80	-173.53	-140.22	173.85	40°22'30.911"N	104°48'13.493"W	1.35	
1951.00	9.860	151.980	1932.71	-181.30	-152.02	181.65	40°22'30.795"N	104°48'13.392"W	3.05	
2044.00	10.210	147.030	2024.29	-189.50	-165.97	189.88	40°22'30.657"N	104°48'13.286"W	1.00	
2136.00	10.200	133.930	2114.85	-199.78	-178.46	200.18	40°22'30.533"N	104°48'13.153"W	2.52	
2229.00	10.180	127.600	2206.38	-212.19	-189.19	212.62	40°22'30.427"N	104°48'12.992"W	1.20	
2325.00	9.470	141.680	2300.99	-223.79	-200.56	224.24	40°22'30.315"N	104°48'12.842"W	2.60	
2417.00	10.190	148.040	2391.64	-232.76	-213.40	233.24	40°22'30.188"N	104°48'12.726"W	1.41	
2510.00	9.790	148.110	2483.23	-241.26	-227.10	241.78	40°22'30.053"N	104°48'12.615"W	0.43	



SRC ENERGY

## Actual Wellpath Report

SANFORD 31N-30B-M AWP

Page 3 of 9

**BAKER  
HUGHES**

## REFERENCE WELLPATH IDENTIFICATION

Operator	SRC ENERGY	Slot	SLOT#23 SANFORD 31N-30B-M (771'FNL & 2393'FWL,SEC.29)
Area	COLORADO	Well	SANFORD 31N-30B-M
Field	WELD COUNTY (NAD83,TRUE NORTH)	Wellbore	SANFORD 31N-30B-M AWB
Facility	SEC.29-T05N-R66W		

## WELLPATH DATA (170 stations)

MD [ft]	Inclination [°]	Azimuth [°]	TVD [ft]	Vert Sect [ft]	North [ft]	East [ft]	Latitude	Longitude	DLS [°/100ft]	Comments
2605.00	10.360	141.960	2576.77	-250.76	-240.68	251.31	40°22'29.918"N	104°48'12.492"W	1.28	
2698.00	10.320	123.500	2668.28	-262.84	-251.87	263.41	40°22'29.808"N	104°48'12.336"W	3.55	
2791.00	11.010	99.940	2759.72	-278.52	-258.00	279.11	40°22'29.747"N	104°48'12.133"W	4.71	
2883.00	10.510	88.150	2850.11	-295.56	-259.25	296.15	40°22'29.735"N	104°48'11.913"W	2.45	
2976.00	10.220	94.180	2941.59	-312.27	-259.58	312.86	40°22'29.732"N	104°48'11.697"W	1.21	
3069.00	9.870	111.910	3033.19	-327.89	-263.15	328.49	40°22'29.696"N	104°48'11.495"W	3.33	
3162.00	10.310	119.980	3124.76	-342.48	-270.29	343.09	40°22'29.626"N	104°48'11.306"W	1.59	
3255.00	10.250	129.420	3216.27	-356.06	-279.70	356.69	40°22'29.533"N	104°48'11.131"W	1.81	
3349.00	10.360	136.650	3308.76	-368.29	-291.16	368.96	40°22'29.420"N	104°48'10.972"W	1.38	
3441.00	10.240	143.340	3399.28	-378.83	-303.73	379.52	40°22'29.295"N	104°48'10.836"W	1.31	
3536.00	10.460	144.100	3492.73	-388.89	-317.49	389.62	40°22'29.159"N	104°48'10.705"W	0.27	
3629.00	10.590	135.860	3584.17	-399.77	-330.46	400.52	40°22'29.031"N	104°48'10.564"W	1.62	
3723.00	10.550	129.550	3676.58	-412.39	-342.14	413.17	40°22'28.916"N	104°48'10.401"W	1.23	
3816.00	10.570	122.200	3768.01	-426.15	-352.11	426.95	40°22'28.817"N	104°48'10.223"W	1.45	
3909.00	10.860	104.490	3859.41	-441.84	-358.85	442.66	40°22'28.751"N	104°48'10.020"W	3.54	
4001.00	10.840	78.780	3949.82	-458.73	-359.33	459.54	40°22'28.746"N	104°48'09.802"W	5.22	
4097.00	10.420	75.890	4044.18	-476.01	-355.46	476.82	40°22'28.784"N	104°48'09.578"W	0.71	
4192.00	10.950	90.380	4137.55	-493.37	-353.43	494.18	40°22'28.804"N	104°48'09.354"W	2.87	
4287.00	9.370	107.930	4231.07	-509.75	-355.87	510.56	40°22'28.780"N	104°48'09.142"W	3.64	
4382.00	11.070	121.300	4324.58	-524.89	-362.99	525.71	40°22'28.710"N	104°48'08.947"W	3.06	
4478.00	10.900	128.070	4418.82	-539.89	-373.37	540.74	40°22'28.607"N	104°48'08.753"W	1.35	
4574.00	11.160	137.260	4513.06	-553.31	-385.79	554.19	40°22'28.484"N	104°48'08.579"W	1.85	
4669.00	11.090	137.080	4606.27	-565.74	-399.24	566.65	40°22'28.352"N	104°48'08.418"W	0.08	
4766.00	11.120	131.760	4701.46	-579.04	-412.30	579.98	40°22'28.223"N	104°48'08.246"W	1.06	
4862.00	10.580	127.940	4795.74	-592.87	-423.88	593.84	40°22'28.108"N	104°48'08.067"W	0.94	
4957.00	10.770	138.050	4889.11	-605.66	-435.85	606.65	40°22'27.990"N	104°48'07.901"W	1.98	
5050.00	10.850	131.070	4980.46	-618.04	-448.06	619.06	40°22'27.869"N	104°48'07.741"W	1.41	
5144.00	11.070	125.420	5072.75	-632.04	-459.11	633.08	40°22'27.760"N	104°48'07.559"W	1.17	
5237.00	10.770	122.510	5164.06	-646.62	-468.95	647.69	40°22'27.663"N	104°48'07.371"W	0.67	
5331.00	10.870	135.850	5256.41	-660.18	-480.03	661.27	40°22'27.553"N	104°48'07.195"W	2.66	



SRC ENERGY

# Actual Wellpath Report

SANFORD 31N-30B-M AWP

Page 4 of 9



## REFERENCE WELLPATH IDENTIFICATION

Operator	SRC ENERGY	Slot	SLOT#23 SANFORD 31N-30B-M (771'FNL & 2393'FWL,SEC.29)
Area	COLORADO	Well	SANFORD 31N-30B-M
Field	WELD COUNTY (NAD83,TRUE NORTH)	Wellbore	SANFORD 31N-30B-M AWB
Facility	SEC.29-T05N-R66W		

## WELLPATH DATA (170 stations) † = interpolated/extrapolated station

MD [ft]	Inclination [°]	Azimuth [°]	TVD [ft]	Vert Sect [ft]	North [ft]	East [ft]	Latitude	Longitude	DLS [°/100ft]	Comments
5424.00	10.330	132.600	5347.82	-672.40	-491.97	673.51	40°22'27.435"N	104°48'07.037"W	0.87	
5517.00	10.230	130.450	5439.33	-684.79	-502.97	685.94	40°22'27.327"N	104°48'06.877"W	0.43	
5612.00	9.960	133.490	5532.86	-697.15	-514.10	698.32	40°22'27.217"N	104°48'06.717"W	0.63	
5708.00	10.250	135.790	5627.37	-709.10	-525.93	710.30	40°22'27.100"N	104°48'06.562"W	0.52	
5804.00	10.370	119.810	5721.84	-722.53	-536.35	723.75	40°22'26.997"N	104°48'06.388"W	2.97	
5897.00	9.640	114.390	5813.43	-736.87	-543.73	738.11	40°22'26.924"N	104°48'06.203"W	1.28	
5989.00	9.810	125.930	5904.11	-750.22	-551.51	751.47	40°22'26.847"N	104°48'06.030"W	2.12	
6082.00	9.980	128.500	5995.73	-762.92	-561.18	764.19	40°22'26.751"N	104°48'05.866"W	0.51	
6175.00	9.710	130.420	6087.36	-775.17	-571.28	776.47	40°22'26.651"N	104°48'05.707"W	0.46	
6268.00	10.020	130.900	6178.99	-787.23	-581.66	788.55	40°22'26.549"N	104°48'05.551"W	0.34	
6361.00	9.870	132.830	6270.59	-799.17	-592.38	800.52	40°22'26.443"N	104°48'05.396"W	0.39	
6454.00	9.880	132.050	6362.21	-810.92	-603.14	812.29	40°22'26.337"N	104°48'05.244"W	0.14	
6547.00	6.750	150.670	6454.24	-819.50	-613.25	820.89	40°22'26.237"N	104°48'05.133"W	4.40	
6640.00	6.990	192.810	6546.63	-820.90	-623.54	822.31	40°22'26.135"N	104°48'05.115"W	5.31	
6734.00	12.720	232.810	6639.30	-811.34	-635.40	812.78	40°22'26.018"N	104°48'05.238"W	9.16	
6826.00	19.940	255.940	6727.62	-787.98	-645.35	789.44	40°22'25.919"N	104°48'05.539"W	10.42	
6920.00	27.100	266.290	6813.79	-750.99	-650.64	752.47	40°22'25.867"N	104°48'06.017"W	8.77	
7012.00	37.280	269.970	6891.55	-702.08	-652.02	703.56	40°22'25.854"N	104°48'06.649"W	11.26	
7105.00	43.560	273.870	6962.33	-641.88	-649.87	643.35	40°22'25.875"N	104°48'07.427"W	7.28	
7198.00	51.260	274.730	7025.22	-573.67	-644.70	575.13	40°22'25.926"N	104°48'08.308"W	8.31	
7290.00	58.960	270.810	7077.82	-498.38	-641.18	499.83	40°22'25.961"N	104°48'09.281"W	9.07	
7384.00	66.060	269.730	7121.18	-415.05	-640.81	416.50	40°22'25.964"N	104°48'10.358"W	7.62	
7479.00	74.350	269.670	7153.33	-325.74	-641.28	327.19	40°22'25.960"N	104°48'11.512"W	8.73	
7573.00	80.030	269.090	7174.16	-234.12	-642.28	235.58	40°22'25.950"N	104°48'12.695"W	6.07	
7666.00	87.230	267.390	7184.47	-141.80	-645.13	143.26	40°22'25.922"N	104°48'13.888"W	7.95	
7692.00†	87.874	266.884	7185.58	-115.85	-646.42	117.32	40°22'25.909"N	104°48'14.223"W	3.15	LANDING (1418'FNL & 2497'FWL, SEC.29)
7758.00	89.510	265.600	7187.09	-50.00	-650.75	51.48	40°22'25.866"N	104°48'15.074"W	3.15	
7852.00	89.540	264.470	7187.87	43.66	-658.88	-42.16	40°22'25.786"N	104°48'16.284"W	1.20	
7944.00	87.780	263.880	7190.02	135.18	-668.22	-133.66	40°22'25.694"N	104°48'17.466"W	2.02	
8038.00	87.910	265.930	7193.56	228.75	-676.56	-227.22	40°22'25.611"N	104°48'18.675"W	2.18	



SRC ENERGY

## Actual Wellpath Report

SANFORD 31N-30B-M AWP

Page 5 of 9

**BAKER  
HUGHES****REFERENCE WELLPATH IDENTIFICATION**

Operator	SRC ENERGY	Slot	SLOT#23 SANFORD 31N-30B-M (771'FNL & 2393'FWL,SEC.29)
Area	COLORADO	Well	SANFORD 31N-30B-M
Field	WELD COUNTY (NAD83,TRUE NORTH)	Wellbore	SANFORD 31N-30B-M AWB
Facility	SEC.29-T05N-R66W		

**WELLPATH DATA (170 stations)**

MD [ft]	Inclination [°]	Azimuth [°]	TVD [ft]	Vert Sect [ft]	North [ft]	East [ft]	Latitude	Longitude	DLS [°/100ft]	Comments
8130.00	87.780	268.700	7197.02	320.59	-680.87	-319.04	40°22'25.569"N	104°48'19.861"W	3.01	
8223.00	87.870	270.410	7200.55	413.51	-681.59	-411.97	40°22'25.562"N	104°48'21.062"W	1.84	
8315.00	89.010	270.110	7203.05	505.48	-681.17	-503.93	40°22'25.566"N	104°48'22.250"W	1.28	
8409.00	89.480	268.410	7204.29	599.46	-682.38	-597.91	40°22'25.554"N	104°48'23.464"W	1.88	
8503.00	89.350	266.840	7205.25	693.38	-686.28	-691.82	40°22'25.515"N	104°48'24.678"W	1.68	
8596.00	89.820	266.810	7205.92	786.25	-691.43	-784.68	40°22'25.464"N	104°48'25.878"W	0.51	
8688.00	89.750	266.590	7206.27	878.10	-696.73	-876.53	40°22'25.412"N	104°48'27.064"W	0.25	
8781.00	89.660	266.860	7206.75	970.96	-702.04	-969.37	40°22'25.359"N	104°48'28.264"W	0.31	
8874.00	89.750	268.590	7207.22	1063.89	-705.73	-1062.29	40°22'25.323"N	104°48'29.464"W	1.86	
8967.00	89.750	270.180	7207.63	1156.89	-706.73	-1155.28	40°22'25.313"N	104°48'30.666"W	1.71	
9060.00	89.570	271.480	7208.18	1249.87	-705.38	-1248.27	40°22'25.326"N	104°48'31.867"W	1.41	
9152.00	89.690	273.510	7208.78	1341.77	-701.38	-1340.18	40°22'25.366"N	104°48'33.055"W	2.21	
9245.00	89.780	275.050	7209.21	1434.49	-694.44	-1432.91	40°22'25.434"N	104°48'34.253"W	1.66	
9339.00	89.970	273.510	7209.41	1528.20	-687.42	-1526.65	40°22'25.503"N	104°48'35.464"W	1.65	
9432.00	89.750	271.680	7209.64	1621.10	-683.21	-1619.55	40°22'25.545"N	104°48'36.664"W	1.98	
9525.00	89.690	268.350	7210.09	1714.08	-683.19	-1712.54	40°22'25.545"N	104°48'37.866"W	3.58	
9618.00	89.450	267.930	7210.79	1807.04	-686.20	-1805.48	40°22'25.515"N	104°48'39.067"W	0.52	
9710.00	89.630	268.540	7211.53	1898.99	-689.04	-1897.44	40°22'25.487"N	104°48'40.255"W	0.69	
9803.00	89.510	269.520	7212.23	1991.98	-690.61	-1990.42	40°22'25.472"N	104°48'41.456"W	1.06	
9896.00	89.350	272.710	7213.15	2084.94	-688.80	-2083.39	40°22'25.489"N	104°48'42.657"W	3.43	
9988.00	89.540	272.740	7214.04	2176.82	-684.43	-2175.28	40°22'25.533"N	104°48'43.845"W	0.21	
10081.00	89.540	271.240	7214.79	2269.75	-681.20	-2268.21	40°22'25.564"N	104°48'45.045"W	1.61	
10174.00	89.510	268.560	7215.56	2362.74	-681.36	-2361.20	40°22'25.563"N	104°48'46.247"W	2.88	
10268.00	89.540	267.050	7216.34	2456.68	-684.96	-2455.13	40°22'25.527"N	104°48'47.460"W	1.61	
10360.00	89.600	267.020	7217.03	2548.56	-689.72	-2547.00	40°22'25.480"N	104°48'48.647"W	0.07	
10452.00	89.630	266.760	7217.65	2640.43	-694.71	-2638.86	40°22'25.430"N	104°48'49.834"W	0.28	
10545.00	89.690	265.620	7218.20	2733.24	-700.89	-2731.66	40°22'25.369"N	104°48'51.033"W	1.23	
10638.00	89.410	266.670	7218.93	2826.04	-707.14	-2824.44	40°22'25.307"N	104°48'52.232"W	1.17	
10731.00	89.420	271.430	7219.88	2919.00	-708.69	-2917.40	40°22'25.292"N	104°48'53.433"W	5.12	
10825.00	89.480	271.480	7220.79	3012.96	-706.30	-3011.36	40°22'25.316"N	104°48'54.647"W	0.08	



SRC ENERGY

# Actual Wellpath Report

SANFORD 31N-30B-M AWP

Page 6 of 9

**BAKER  
HUGHES****REFERENCE WELLPATH IDENTIFICATION**

Operator	SRC ENERGY	Slot	SLOT#23 SANFORD 31N-30B-M (771'FNL & 2393'FWL,SEC.29)
Area	COLORADO	Well	SANFORD 31N-30B-M
Field	WELD COUNTY (NAD83,TRUE NORTH)	Wellbore	SANFORD 31N-30B-M AWB
Facility	SEC.29-T05N-R66W		

**WELLPATH DATA (170 stations)**

MD [ft]	Inclination [°]	Azimuth [°]	TVD [ft]	Vert Sect [ft]	North [ft]	East [ft]	Latitude	Longitude	DLS [°/100ft]	Comments
10917.00	89.450	270.470	7221.64	3104.93	-704.73	-3103.34	40°22'25.331"N	104°48'55.835"W	1.10	
11010.00	89.260	271.010	7222.69	3197.92	-703.53	-3196.33	40°22'25.343"N	104°48'57.037"W	0.62	
11103.00	89.690	271.270	7223.54	3290.89	-701.68	-3289.31	40°22'25.361"N	104°48'58.238"W	0.54	
11197.00	90.310	267.700	7223.54	3384.87	-702.53	-3383.29	40°22'25.352"N	104°48'59.452"W	3.85	
11384.00	89.380	269.690	7224.05	3571.82	-706.79	-3570.23	40°22'25.310"N	104°49'01.868"W	1.17	
11477.00	89.480	272.360	7224.97	3664.79	-705.12	-3663.20	40°22'25.326"N	104°49'03.069"W	2.87	
11572.00	89.510	276.040	7225.81	3759.50	-698.17	-3757.92	40°22'25.395"N	104°49'04.293"W	3.87	
11664.00	89.850	276.510	7226.33	3850.92	-688.11	-3849.37	40°22'25.494"N	104°49'05.474"W	0.63	
11757.00	89.780	275.580	7226.63	3943.38	-678.32	-3941.85	40°22'25.591"N	104°49'06.669"W	1.00	
11849.00	90.060	277.000	7226.75	4034.80	-668.24	-4033.30	40°22'25.690"N	104°49'07.851"W	1.57	
11943.00	90.090	277.620	7226.63	4128.01	-656.28	-4126.53	40°22'25.808"N	104°49'09.056"W	0.66	
12036.00	90.060	275.350	7226.51	4220.38	-645.77	-4218.93	40°22'25.912"N	104°49'10.249"W	2.44	
12129.00	89.970	268.170	7226.49	4313.27	-642.92	-4311.83	40°22'25.940"N	104°49'11.450"W	7.72	
12221.00	90.030	265.140	7226.49	4405.12	-648.29	-4403.66	40°22'25.887"N	104°49'12.636"W	3.29	
12314.00	90.000	262.630	7226.46	4497.60	-658.19	-4496.12	40°22'25.789"N	104°49'13.831"W	2.70	
12408.00	89.910	261.680	7226.54	4590.75	-671.02	-4589.24	40°22'25.662"N	104°49'15.034"W	1.02	
12501.00	90.000	261.210	7226.61	4682.75	-684.86	-4681.21	40°22'25.525"N	104°49'16.222"W	0.51	
12595.00	89.750	263.300	7226.81	4775.91	-697.53	-4774.34	40°22'25.400"N	104°49'17.425"W	2.24	
12687.00	89.970	270.490	7227.04	4867.73	-702.51	-4866.15	40°22'25.350"N	104°49'18.612"W	7.82	
12782.00	90.250	272.060	7226.86	4962.70	-700.39	-4961.12	40°22'25.371"N	104°49'19.839"W	1.68	
12875.00	90.060	267.200	7226.60	5055.67	-700.99	-5054.09	40°22'25.365"N	104°49'21.040"W	5.23	
12969.00	90.280	265.790	7226.33	5149.50	-706.74	-5147.91	40°22'25.308"N	104°49'22.252"W	1.52	
13062.00	90.370	271.320	7225.80	5242.44	-709.08	-5240.84	40°22'25.284"N	104°49'23.453"W	5.95	
13155.00	90.090	272.890	7225.42	5335.37	-705.67	-5333.78	40°22'25.318"N	104°49'24.653"W	1.71	
13247.00	90.150	270.740	7225.23	5427.31	-702.75	-5425.73	40°22'25.347"N	104°49'25.841"W	2.34	
13340.00	90.490	273.720	7224.71	5520.22	-699.14	-5518.64	40°22'25.382"N	104°49'27.042"W	3.23	
13434.00	90.490	274.750	7223.91	5613.94	-692.19	-5612.38	40°22'25.450"N	104°49'28.253"W	1.10	
13527.00	90.770	275.540	7222.89	5706.54	-683.85	-5705.00	40°22'25.533"N	104°49'29.450"W	0.90	
13622.00	90.370	273.920	7221.94	5801.19	-676.02	-5799.67	40°22'25.610"N	104°49'30.673"W	1.76	
13716.00	90.550	274.650	7221.19	5894.91	-669.00	-5893.40	40°22'25.679"N	104°49'31.884"W	0.80	



SRC ENERGY

# Actual Wellpath Report

SANFORD 31N-30B-M AWP

Page 7 of 9



**BAKER  
HUGHES**

## REFERENCE WELLPATH IDENTIFICATION

Operator	SRC ENERGY	Slot	SLOT#23 SANFORD 31N-30B-M (771'FNL & 2393'FWL,SEC.29)
Area	COLORADO	Well	SANFORD 31N-30B-M
Field	WELD COUNTY (NAD83,TRUE NORTH)	Wellbore	SANFORD 31N-30B-M AWB
Facility	SEC.29-T05N-R66W		

## WELLPATH DATA (170 stations)

MD [ft]	Inclination [°]	Azimuth [°]	TVD [ft]	Vert Sect [ft]	North [ft]	East [ft]	Latitude	Longitude	DLS [°/100ft]	Comments
13809.00	90.220	273.860	7220.56	5987.63	-662.10	-5986.14	40°22'25.747"N	104°49'33.082"W	0.92	
13902.00	90.280	274.170	7220.15	6080.39	-655.59	-6078.91	40°22'25.811"N	104°49'34.281"W	0.34	
13995.00	90.340	273.370	7219.65	6173.17	-649.47	-6171.71	40°22'25.871"N	104°49'35.480"W	0.86	
14089.00	89.630	269.070	7219.68	6267.12	-647.47	-6265.67	40°22'25.891"N	104°49'36.694"W	4.64	
14181.00	90.280	269.060	7219.75	6359.11	-648.97	-6357.65	40°22'25.876"N	104°49'37.882"W	0.71	
14274.00	90.310	268.550	7219.27	6452.09	-650.91	-6450.63	40°22'25.856"N	104°49'39.084"W	0.55	
14368.00	90.460	267.410	7218.64	6546.04	-654.23	-6544.57	40°22'25.823"N	104°49'40.297"W	1.22	
14460.00	90.280	265.460	7218.04	6637.87	-659.95	-6636.39	40°22'25.767"N	104°49'41.484"W	2.13	
14552.00	90.090	265.120	7217.75	6729.57	-667.50	-6728.07	40°22'25.692"N	104°49'42.668"W	0.42	
14647.00	89.940	266.900	7217.72	6824.35	-674.11	-6822.84	40°22'25.626"N	104°49'43.893"W	1.88	
14741.00	90.180	269.760	7217.62	6918.31	-676.85	-6916.79	40°22'25.599"N	104°49'45.107"W	3.05	
14835.00	90.280	268.870	7217.25	7012.30	-677.97	-7010.78	40°22'25.587"N	104°49'46.321"W	0.95	
14929.00	90.250	268.790	7216.81	7106.29	-679.89	-7104.76	40°22'25.568"N	104°49'47.535"W	0.09	
15022.00	90.460	269.940	7216.24	7199.28	-680.92	-7197.75	40°22'25.558"N	104°49'48.737"W	1.26	
15114.00	90.310	269.180	7215.62	7291.28	-681.63	-7289.75	40°22'25.551"N	104°49'49.925"W	0.84	
15207.00	90.250	268.090	7215.16	7384.25	-683.84	-7382.72	40°22'25.528"N	104°49'51.127"W	1.17	
15299.00	90.250	267.350	7214.76	7476.18	-687.50	-7474.64	40°22'25.492"N	104°49'52.314"W	0.80	
15391.00	90.220	266.960	7214.38	7568.08	-692.07	-7566.53	40°22'25.447"N	104°49'53.501"W	0.43	
15441.00	90.280	266.140	7214.17	7618.00	-695.08	-7616.44	40°22'25.417"N	104°49'54.146"W	1.64	LAST BH SURVEY (1473'FNL & 105'FWL, SEC.30)
15465.00	90.280	266.140	7214.05	7641.94	-696.70	-7640.38	40°22'25.401"N	104°49'54.456"W	0.00	PROJ TO BIT (1475'FNL & 81'FWL, SEC.30)

## HOLE & CASING SECTIONS - Ref Wellbore: SANFORD 31N-30B-M AWB Ref Wellpath: SANFORD 31N-30B-M AWP

String/Diameter	Start MD [ft]	End MD [ft]	Interval [ft]	Start TVD [ft]	End TVD [ft]	Start N/S [ft]	Start E/W [ft]	End N/S [ft]	End E/W [ft]
9.625in Casing Surface	20.00	1805.00	1785.00	20.00	1788.32	0.00	0.00	-134.70	168.90





SRC ENERGY

# Actual Wellpath Report

SANFORD 31N-30B-M AWP

Page 8 of 9

**BAKER  
HUGHES****REFERENCE WELLPATH IDENTIFICATION**

Operator	SRC ENERGY	Slot	SLOT#23 SANFORD 31N-30B-M (771'FNL & 2393'FWL,SEC.29)
Area	COLORADO	Well	SANFORD 31N-30B-M
Field	WELD COUNTY (NAD83,TRUE NORTH)	Wellbore	SANFORD 31N-30B-M AWB
Facility	SEC.29-T05N-R66W		

**TARGETS**

Name	TVD [ft]	North [ft]	East [ft]	Grid East [US ft]	Grid North [US ft]	Latitude	Longitude	Shape
SEC.29-T05N-R66W	15.00	159.20	-151.01	3193654.99	1380603.61	40°22'33.870"N	104°48'17.690"W	polygon
SEC.30-T05N-R66W	15.00	159.20	-151.01	3193654.99	1380603.61	40°22'33.870"N	104°48'17.690"W	polygon
SANFORD 31N-30B-M TPZ ON PLAT (1453'FNL & 2508'FWL,SEC.29)	7184.00	-680.94	127.88	3193940.44	1379765.71	40°22'25.568"N	104°48'14.087"W	point
SANFORD 31N-30B-M TPZ REV-1 (1445'FNL & 2508'FWL,SEC.29)	7184.00	-672.50	127.88	3193940.38	1379774.15	40°22'25.651"N	104°48'14.087"W	point
SANFORD 31N-30B-M TPZ REV-2 (1445'FNL & 2508'FWL,SEC.29)	7185.83	-672.50	127.88	3193940.38	1379774.15	40°22'25.651"N	104°48'14.087"W	point
SANFORD 31N-30B-M BHL ON PLAT (1444'FNL & 50'FWL,SEC.30)	7197.00	-665.86	-7670.96	3186142.06	1379719.61	40°22'25.705"N	104°49'54.851"W	point
SANFORD 31N-30B-M BPZ ON PLAT (1444'FNL & 150'FWL,SEC.30)	7197.00	-665.91	-7570.90	3186242.12	1379720.34	40°22'25.705"N	104°49'53.558"W	point
SANFORD 31N-30B-M BHL REV-1 (1444'FNL & 50'FWL,SEC.30)	7202.46	-665.88	-7670.97	3186142.05	1379719.59	40°22'25.705"N	104°49'54.851"W	point
SANFORD 31N-30B-M BPZ REV-1 (1444'FNL & 150'FWL,SEC.30)	7202.46	-665.91	-7570.90	3186242.12	1379720.34	40°22'25.705"N	104°49'53.558"W	point

**WELLPATH COMPOSITION - Ref Wellbore: SANFORD 31N-30B-M AWB Ref Wellpath: SANFORD 31N-30B-M AWP**

Start MD [ft]	End MD [ft]	Positional Uncertainty Model	Log Name/Comment	Wellbore
20.00	1766.00	BHI NaviTrak (Axial)	BH/NAVITRAK (AXIAL) 13 1/2" SURFACE HOLE <92'-1750'>	SANFORD 31N-30B-M AWB
1766.00	15441.00	BHI AutoTrak Curve (MagCAD+IRF1, Short spacing)	BH/AUTOTRAK CURVE (MAGCAD+IRF1, SHORT SPACING) 8 1/2" HOLE <1858'- 15441'>	SANFORD 31N-30B-M AWB
15441.00	15465.00	Blind Drilling (std)	Projection to bit	SANFORD 31N-30B-M AWB



SRC ENERGY

# Actual Wellpath Report

SANFORD 31N-30B-M AWP

Page 9 of 9



## REFERENCE WELLPATH IDENTIFICATION

Operator	SRC ENERGY	Slot	SLOT#23 SANFORD 31N-30B-M (771'FNL & 2393'FWL,SEC.29)
Area	COLORADO	Well	SANFORD 31N-30B-M
Field	WELD COUNTY (NAD83,TRUE NORTH)	Wellbore	SANFORD 31N-30B-M AWB
Facility	SEC.29-T05N-R66W		

## WELLPATH COMMENTS

MD [ft]	Inclination [°]	Azimuth [°]	TVD [ft]	Comment
7692.00	87.874	266.884	7185.58	LANDING (1418'FNL & 2497'FWL, SEC.29)
15441.00	90.280	266.140	7214.17	LAST BH SURVEY (1473'FNL & 105'FWL, SEC.30)
15465.00	90.280	266.140	7214.05	PROJ TO BIT (1475'FNL & 81'FWL, SEC.30)