

LEGAL DESCRIPTION OF USE AREA:
NORTHEAST ONE-QUARTER OF THE NORTHEAST ONE-QUARTER OF SECTION 35, TOWNSHIP 4 SOUTH,
RANGE 65 WEST OF THE SIXTH PRINCIPAL MERIDIAN, COUNTY OF ARAPAHOE, STATE OF COLORADO.

AS RECORDED AT RECEPTION NO. D7053583.

EXISTING LAND USE:
1. GRAZING LAND CLASS VID
2. GRAZING LAND CLASS VIE

EXISTING ZONING:
1. A-1 - AGRICULTURAL

STANDARD COUNTY NOTES:
1. THE OWNER(S), DEVELOPER(S), AND/OR SUBDIVIDER(S) OF THE ADMINISTRATIVE OIL & GAS USE BY SPECIAL REVIEW PLAN KNOWN AS THE
STATE BIERSTADT #4-65 35-34 2AH, 2BH, 2CH, 2DH (PHASE 1), STATE PIKES #4-65 36-31 2AH, 2BH, 2CH, 2DH (PHASE 2), THEIR RESPECTIVE
SUCCESSORS, HEIRS AND/OR ASSIGNS AGREE TO THE FOLLOWING NOTES:

STREET MAINTENANCE:
1. IT IS MUTUALLY UNDERSTOOD AND AGREED THAT THE EXISTING ROADWAYS USED TO ACCESS THE SITE, AS SHOWN ON THIS PLAN, WILL NOT
BE MAINTAINED BY THE COUNTY. THE OWNERS, DEVELOPERS AND/OR SUBDIVIDERS, THEIR SUCCESSORS AND/OR ASSIGNS IN INTEREST,
SHALL BE RESPONSIBLE FOR STREET MAINTENANCE.
2. EXISTING ROADS USED TO ACCESS THE SITE LOCATION SHALL BE IMPROVED OR MAINTAINED IN A CONDITION THE SAME AS OR BETTER THAN
BEFORE OPERATIONS BEGAN. THE APPLICANT SHALL SCHEDULE AN ONSITE MEETING WITH THE COUNTY INSPECTOR PRIOR TO
CONSTRUCTION.
3. ACCESS TO COUNTY ROADS WILL BE APPROVED VIA A COUNTY ACCESS PERMIT AND OVERSIZE VEHICLE PERMIT.
4. THE APPLICANT IS RESPONSIBLE TO MAINTAIN ALL PUBLIC ROADWAYS AND REPAIR ANY DAMAGE RESULTING FROM APPLICANT'S TRUCK
TRAFFIC DURING CONSTRUCTION, DRILLING AND COMPLETION OF THE OIL & GAS WELL.
5. THE APPLICANT AND/OR OPERATOR ARE RESPONSIBLE FOR DUST CONTROL FOR THE PAD AND THE ROADWAYS USED DURING THE
CONSTRUCTION.

DRAINAGE MAINTENANCE:
THE OPERATOR SHALL BE RESPONSIBLE FOR MAINTENANCE OF ALL DRAINAGE FACILITIES INSTALLED. REQUIREMENTS INCLUDE, BUT ARE NOT
LIMITED TO MAINTAINING THE SPECIFIED STORM WATER DETENTION/RETENTION VOLUMES, MAINTAINING OUTLET STRUCTURES, FLOW
RESTRICTION DEVICES AND FACILITIES NEEDED TO CONVEY FLOW TO SAID BASINS.

SIGHT TRIANGLE MAINTENANCE:
THE OWNERS OF PRIVATE PROPERTY CONTAINING A TRAFFIC SIGHT TRIANGLE ARE PROHIBITED FROM ERECTING OR GROWING ANY
OBSTRUCTIONS OVER THREE FEET IN HEIGHT ABOVE THE ELEVATION OF THE LOWEST POINT ON THE CROWN OF THE ADJACENT ROADWAY
WITHIN SAID TRIANGLE.

EMERGENCY ACCESS:
EMERGENCY ACCESS IS GRANTED HERewith OVER AND ACROSS ALL AREAS FOR POLICE, FIRE AND EMERGENCY VEHICLES.

PRIVATE STREET MAINTENANCE:
IT IS MUTUALLY UNDERSTOOD AND AGREED THAT THE PRIVATE ROADWAYS SHOWN ON THIS PLAN ARE NOT IN CONFORMANCE WITH
ARAPAHOE COUNTY ROADWAY INFRASTRUCTURE DESIGN AND CONSTRUCTION STANDARDS AND WILL NOT BE MAINTAINED BY THE COUNTY.
THE OWNERS, DEVELOPERS, AND/OR SUBDIVIDERS, THEIR SUCCESSORS AND/OR ASSIGNS IN INTEREST, SHALL BE RESPONSIBLE FOR STREET
MAINTENANCE.

DRAINAGE LIABILITY:
IT IS THE POLICY OF ARAPAHOE COUNTY THAT IT DOES NOT AND WILL NOT ASSUME LIABILITY FOR THE DRAINAGE FACILITIES DESIGNED
AND/OR CERTIFIED BY UELS, LLC. ARAPAHOE COUNTY REVIEWS DRAINAGE PLANS PURSUANT TO COLORADO REVISED STATUTES TITLE 30,
ARTICLE 28, BUT CANNOT, ON BEHALF OF CONOCOPHILLIPS COMPANY GUARANTEE THAT FINAL DRAINAGE DESIGN REVIEW WILL ABSOLVE
CONOCOPHILLIPS COMPANY AND/OR THEIR SUCCESSORS AND/OR ASSIGNS OF FUTURE LIABILITY FOR IMPROPER DESIGN. IT IS THE POLICY OF
ARAPAHOE COUNTY THAT APPROVAL OF THE FINAL PLAT AND/OR FINAL DEVELOPMENT PLAN DOES NOT IMPLY APPROVAL OF UELS, LLC'S
DRAINAGE DESIGN.

SPILL PREVENTION, CONTROL & COUNTERMEASURE PLAN (SPCC):
IN COORDINATION WITH PROFESSIONAL ENVIRONMENTAL ENGINEERS AND PROFESSIONAL FACILITY ENGINEERS, CONOCOPHILLIPS COMPANY
HAS DEVELOPED AND DESIGNED PRO-ACTIVE SYSTEMS, FLUID TRANSFER PROCESSES, AND DOCUMENTATION MEASURES TO LIMIT THE
POTENTIAL OF AN ACCIDENTAL DISCHARGE. THE APPLICANT HAS DEVELOPED AN SPCC PLAN TO ADDRESS THE PROCEDURES RELATIVE TO
EMERGENCY RESPONSES TO SPILLS, INCLUDING PREVENTION MEASURES, NOTIFICATION PROTOCOL AND MITIGATION. THE SPCC PLAN SHALL
BE KEPT ON THE WELL SITE DURING DRILLING AND COMPLETIONS AND ON CONOCOPHILLIPS COMPANY'S INTRANET. OPERATIONS, HEALTH,
SAFETY, AND ENVIRONMENTAL PERSONNEL ALL KEEP COPIES OF THE SPCC PLAN ON HAND. FROM THE DATE OF INITIAL PRODUCTION, THE
OPERATOR HAS SIX (6) MONTHS TO DEVELOP AN SPCC PLAN. THE OPERATOR SHALL PROVIDE THE SPCC PLAN TO ARAPAHOE COUNTY WHEN
COMPLETED.

SHEET INDEX	
COVER SHEET/STANDARD NOTES	1
IMPACT AREA MAP	2
PHASE 1 - DRILLING OPERATION PLAN	3
PHASE 1 - PRODUCTION PLAN	4
PHASE 1 - RECLAMATION PLAN	5
PHASE 2 - DRILLING OPERATION PLAN	6
PHASE 2 - PRODUCTION PLAN	7
PHASE 2 - RECLAMATION PLAN	8
GENERAL NOTES / SIGNAGE DETAILS	9

ARAPAHOE COUNTY CASE NO. AE18-007

ConocoPhillips Company
STATE BIERSTADT #4-65 35-34 2AH, 2BH, 2CH, 2DH (PHASE 1),
STATE PIKES #4-65 36-31 2AH, 2BH, 2CH, 2DH (PHASE 2)
NE1/4 SEC. 35, T4S, R65W, 6TH P.M.
ARAPAHOE COUNTY, COLORADO
OIL & GAS OPERATIONS PLAN

REV	DATE	BY	REVISIONS
0	05-22-2018	C.J.C.	ISSUED FOR PERMIT
1	07-11-2018	C.J.C.	1st REVIEW COMMENT REVISIONS
2	09-21-2018	C.J.C.	2nd REVIEW COMMENT REVISIONS

SCALE: NO SCALE
DRAWN BY: C.J.C.
DATE DRAWN: 05-04-2018
UELS FILE NO.: C-6642
PROJ. NO: CON02-18-0018



CIVIL & STRUCTURAL ENGINEERING
AND LAND SURVEYING SERVICES
85 South 200 East, Vernal, UT 84078
O: 435.789.1017
www.uintahgroup.com
- SINCE 1964 -

**COVER
SHEET**

**SHEET
1
OF 9**

**ARAPAHOE COUNTY OIL & GAS OPERATIONS PLAN
ADMINISTRATIVE ENERGY USE BY SPECIAL REVIEW**

STATE BIERSTADT #4-65 35-34 2AH, 2BH, 2CH, 2DH (PHASE 1),
STATE PIKES #4-65 36-31 2AH, 2BH, 2CH, 2DH (PHASE 2)

LOCATED IN:
NE1/4 SEC. 35, T4S, R65W, 6TH P.M.
ARAPAHOE COUNTY, COLORADO

**CERTIFICATE OF USE BY SPECIAL REVIEW
PERMIT HOLDER AND MINERAL/OIL &
GAS INTEREST LEASE HOLDER**

I, MAXWELL BLAIR HEREBY AFFIRM THAT I
AM THE MINERAL/OIL & GAS INTEREST LEASE HOLDER OR
AUTHORIZED AGENT OF THE MINERAL/OIL & GAS INTEREST
LEASE HOLDER ON THE PROPERTY DESCRIBED HEREIN, KNOWN
AS STATE BIERSTADT #4-65 35-34 2AH, 2BH, 2CH, 2DH (PHASE 1),
STATE PIKES #4-65 36-31 2AH, 2BH, 2CH, 2DH (PHASE 2), CASE NO:
AE18-007

USE BY SPECIAL REVIEW PERMIT HOLDER & MINERAL / OIL & GAS
INTEREST LEASE HOLDER OR AUTHORIZED AGENT

NOTARIAL CERTIFICATE:

STATE OF Colorado
COUNTY OF Arapahoe SS

THE FOREGOING INSTRUMENT WAS ACKNOWLEDGED BEFORE

ME THIS 12th DAY OF November, 20

BY Maxwell D. Blair, AN AUTHORIZED
SIGNATORY.

BY Brother F. Dwyer WITNESS MY HAND AND SEAL
NOTARY PUBLIC

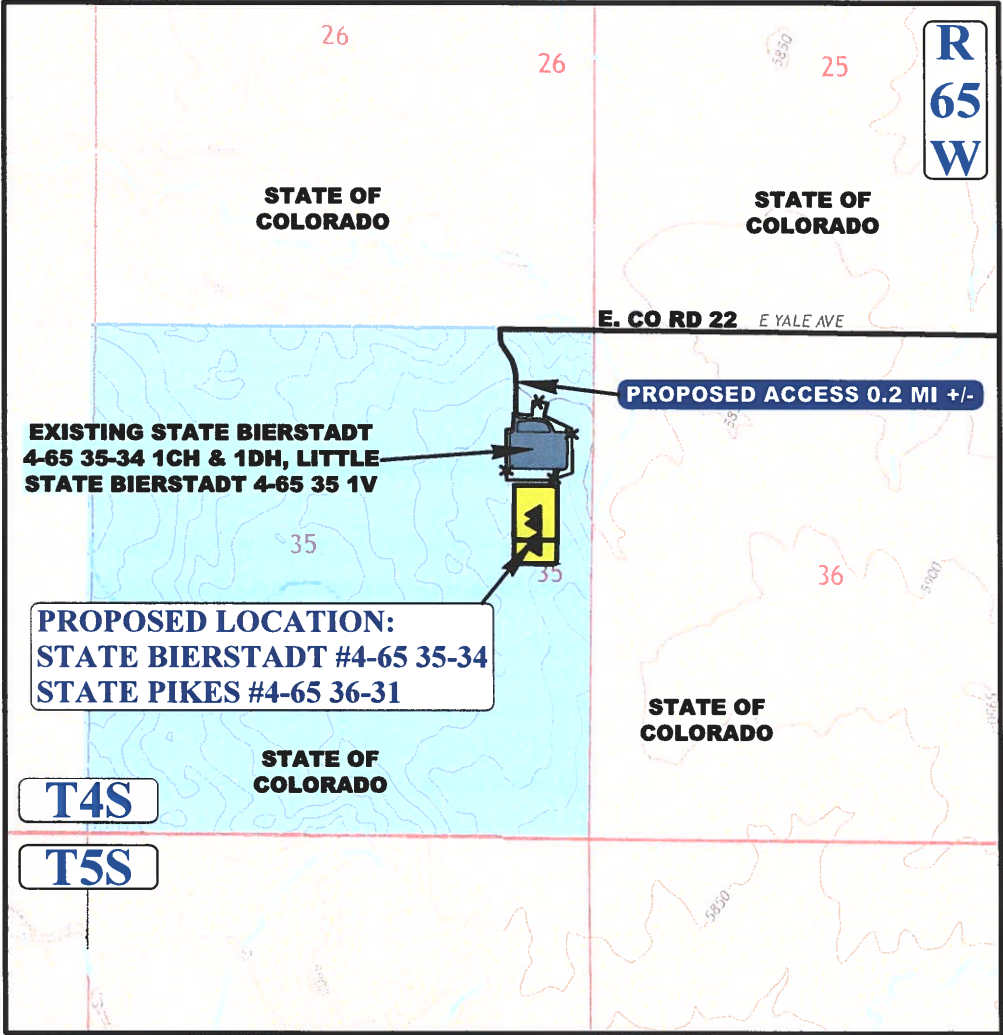
MY COMMISSION EXPIRES: 10-17-2022

(SEAL)
NOTARY I.D. NUMBER
GREEN FAY DENZER
NOTARY PUBLIC
STATE OF COLORADO
NOTARY ID 20144040717
MY COMMISSION EXPIRES OCTOBER 17, 2022

COGCC API:

DATE:

SURVEY BENCHMARK
BENCHMARK CP-5-JH (PNT-5)
LATITUDE: N39°37'52.25"
LONGITUDE: W104°30'04.26" (NAD 83)
ELEV: 5987.72' (NAVD88)



WATKINS, COLORADO - USGS TOPOGRAPHIC QUAD MAP
SCALE: 1" = 2,000'

PUBLIC WORKS AND DEVELOPMENT DIRECTOR APPROVAL
(Administrative Energy Use by Special Review)

THE ADMINISTRATIVE ENERGY USE BY SPECIAL REVIEW, AS DEPICTED HEREON
PURSUANT TO SECTION 12-1900 OF THE ARAPAHOE COUNTY LAND DEVELOPMENT CODE,
HEREON APPROVED THIS 19 DAY OF November, 2018.

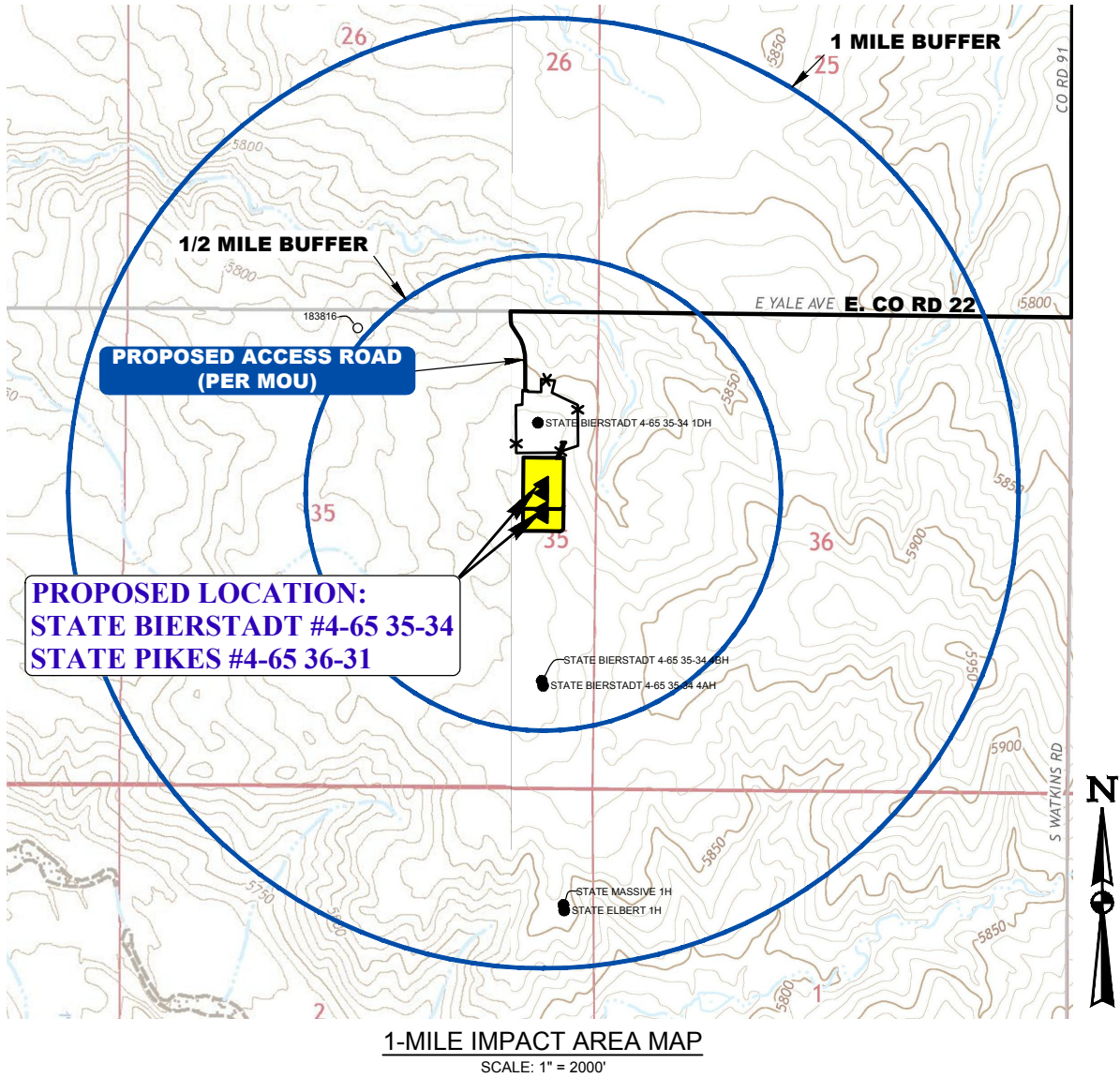
Bryan Weiner
Bryan Weiner
PUBLIC WORKS AND DEVELOPMENT DIRECTOR OR DESIGNEE

NOTE:

1. NO OTHER OIL AND GAS FACILITIES, SOLAR FACILITIES, POWER TRANSMISSION LINES, ELECTRIC SUBSTATIONS, NATURAL GAS TRANSMISSION LINES, AND OTHER SIMILAR SUCH ENERGY FACILITY EQUIPMENT OR ENERGY PRODUCTION SITES, BASED ON PUBLICLY AVAILABLE RESOURCES, ARE LOCATED WITHIN THE ONE MILE BUFFER AREA.

ARAPAHOE COUNTY OIL & GAS OPERATIONS PLAN
ADMINISTRATIVE ENERGY USE BY SPECIAL REVIEW
STATE BIERSTADT #4-65 35-34 2AH, 2BH, 2CH, 2DH (PHASE 1),
STATE PIKES #4-65 36-31 2AH, 2BH, 2CH, 2DH (PHASE 2)
LOCATED IN:
NE1/4 SEC. 35, T4S, R65W, 6TH P.M.
ARAPAHOE COUNTY, COLORADO

LEGEND	
	PROPOSED OIL AND GAS WELL SITE
	PERMITTED OIL AND GAS WELL SITE PER COGCC GIS ONLINE APRIL, 2018
	ABANDONED OIL AND GAS WELL SITE PER COGCC GIS ONLINE APRIL, 2018
	PERMITTED WATER WELL PER COLORADO DIVISION OF WATER RESOURCES APRIL 2018



PERMITTED WATER WELLS					
WELL PERMIT NUMBER	APPROX. DISTANCE FROM WELL (FT)	SAMPLING PRIORITY	CURRENT PROPERTY OWNER (TAX RECORDS)	WELL DEPTH	WELL OWNER (WELL PERMIT)
183816	2697	1	STATE BOARD OF LAND COMMISSIONERS	555 FT	STATE BOARD OF LAND COMMISSIONERS

1. WELL SHOWN IS FARTHER THAN 0.5 MILES FROM THE PROPOSED WELL LOCATIONS. SHOWN ON THIS MAP FOR REFERENCE ONLY.

DISTANCES FROM WELLHEAD																
WELL NAME	BUILDING		BUILDING UNIT		HIGH OCCU. BUILDING		D.O.A.A.		PUBLIC ROAD		ABOVE GROUND UTILITY		RAILROAD		PROPERTY LINE	
	DIRECTION	LENGTH	DIRECTION	LENGTH	DIRECTION	LENGTH	DIRECTION	LENGTH	DIRECTION	LENGTH	DIRECTION	LENGTH	DIRECTION	LENGTH	DIRECTION	LENGTH
35-34 2AH	N25°W	2255'	N42°W	2958'	OVER 1 MILE		OVER 1 MILE		NORTH	1906'	NORTH	1951'	OVER 1 MILE		EAST	600'
35-34 2BH	N25°W	2284'	N42°W	2982'	OVER 1 MILE		OVER 1 MILE		NORTH	1938'	NORTH	1983'	OVER 1 MILE		EAST	600'
35-34 2CH	N24°W	2313'	N41°W	3006'	OVER 1 MILE		OVER 1 MILE		NORTH	1970'	NORTH	2015'	OVER 1 MILE		EAST	600'
35-34 2DH	N24°W	2342'	N41°W	3030'	OVER 1 MILE		OVER 1 MILE		NORTH	2002'	NORTH	2047'	OVER 1 MILE		EAST	600'
36-31 2AH	N23°W	2479'	N39°W	3144'	OVER 1 MILE		OVER 1 MILE		NORTH	2152'	NORTH	2197'	OVER 1 MILE		EAST	600'
36-31 2BH	N22°W	2509'	N39°W	3169'	OVER 1 MILE		OVER 1 MILE		NORTH	2184'	NORTH	2229'	OVER 1 MILE		EAST	600'
36-31 2CH	N22°W	2538'	N38°W	3194'	OVER 1 MILE		OVER 1 MILE		NORTH	2216'	NORTH	2261'	OVER 1 MILE		EAST	600'
36-31 2DH	N22°W	2568'	N38°W	3219'	OVER 1 MILE		OVER 1 MILE		NORTH	2248'	NORTH	2293'	OVER 1 MILE		EAST	600'
DISTANCES FROM PRODUCTION EQUIPMENT																
PRODUCTION FEATURE	BUILDING		BUILDING UNIT		HIGH OCCU. BUILDING		D.O.A.A.		PUBLIC ROAD		ABOVE GROUND UTILITY		RAILROAD		PROPERTY LINE	
	(FROM TANK)		(FROM TANK)						(FROM FLARE)		(FROM FLARE)					
	DIRECTION	LENGTH	DIRECTION	LENGTH	DIRECTION	LENGTH	DIRECTION	LENGTH	DIRECTION	LENGTH	DIRECTION	LENGTH	DIRECTION	LENGTH	DIRECTION	LENGTH
PRODUCTION EQUIPMENT	N23°W	1977'	N42°W	2668'	OVER 1 MILE		OVER 1 MILE		NORTH	1615'	NORTH	1660'	OVER 1 MILE		EAST	439'

NOTE:
DISTANCES SHOWN ARE FROM THE NEAREST WELL OR PRODUCTION FACILITY EQUIPMENT

ARAPAHOE COUNTY CASE NO. AE18-007

ConocoPhillips Company

STATE BIERSTADT #4-65 35-34 2AH, 2BH, 2CH, 2DH (PHASE 1),
STATE PIKES #4-65 36-31 2AH, 2BH, 2CH, 2DH (PHASE 2)
NE1/4 SEC. 35, T4S, R65W, 6TH P.M.
ARAPAHOE COUNTY, COLORADO
OIL & GAS OPERATIONS PLAN

REV	DATE	BY	REVISIONS
0	05-22-2018	C.J.C.	ISSUED FOR PERMIT
1	07-11-2018	C.J.C.	1st REVIEW COMMENT REVISIONS
2	09-21-2018	C.J.C.	2nd REVIEW COMMENT REVISIONS

SCALE: AS NOTED
DRAWN BY: C.J.C.
DATE DRAWN: 05-04-2018
UELS FILE NO.: C-6642
PROJ. NO: CON02-18-0018



CIVIL & STRUCTURAL ENGINEERING
AND LAND SURVEYING SERVICES
85 South 200 East, Vernal, UT 84078
O: 435.789.1017
www.uintahgroup.com
- SINCE 1964 -

IMPACT
AREA
MAP

SHEET
2
OF 9

ARAPAHOE COUNTY OIL & GAS OPERATIONS PLAN
ADMINISTRATIVE ENERGY USE BY SPECIAL REVIEW

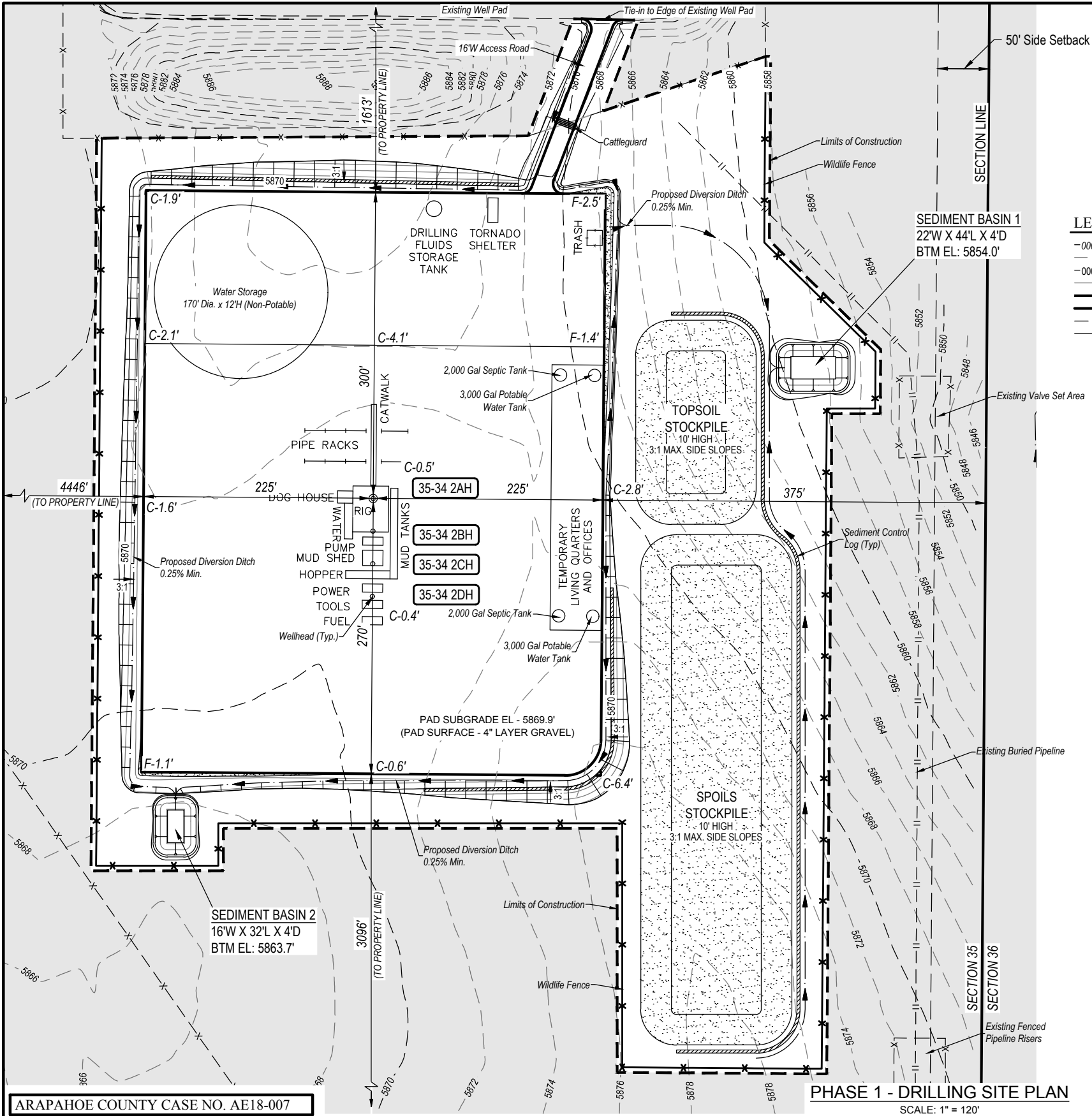
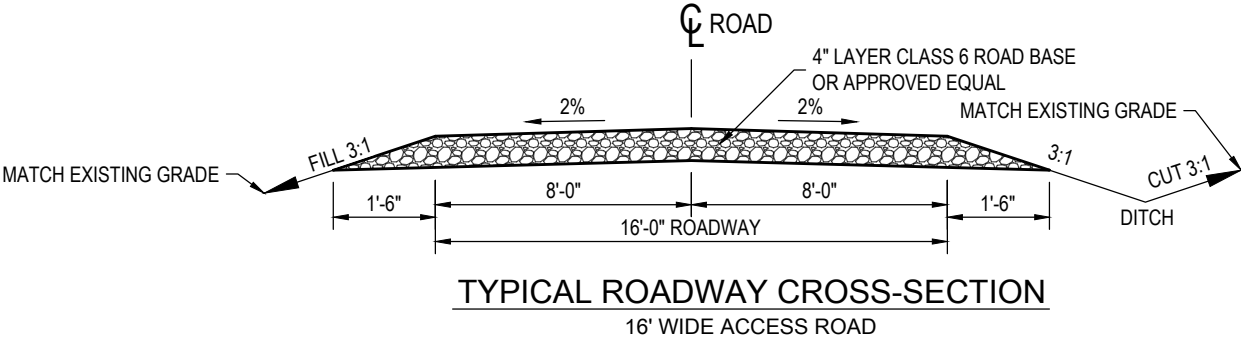
STATE BIERSTADT #4-65 35-34 2AH, 2BH, 2CH, 2DH (PHASE 1),
STATE PIKES #4-65 36-31 2AH, 2BH, 2CH, 2DH (PHASE 2)

LOCATED IN:
NE1/4 SEC. 35, T4S, R65W, 6TH P.M.
ARAPAHOE COUNTY, COLORADO

Drilling Equipment
Representative Dimension Table

Item	Qty	Length (ft)	Width (ft)	Height (ft)	Diameter (ft)
Hopper	1	51	12	12	
Mud Shed	1	33	14	11	
Mud Tanks	2	45	11	11	
Drilling Rig	1	45	35	100	
Pump	1	33	14	11	
Power	1	30	11	11	
Tools	1	43	12	11	
Fuel	1	30	11	10	
Dog House	1	29	10	9	
Catwalk	2	58	9	8	
Pipe Rack (long)	2	60	-	-	
Pipe Rack (short)	2	26	-	-	
Water Tank	1	47	10	11	
Storage Tank	1	-	-	20	16
Trash Dumpster	1	15	15	6	
Temp. Water Storage	1	-	-	12	170
Temp Living	1	350	50	14	
Septic Tank	2			4	12
Potable Water Tank	2			4	12
Tornado Shelter	1	24	10	10	

- NOTE:
1. DRILLING SITE PLAN LAYOUT IS FOR GRAPHICAL PURPOSES ONLY. ACTUAL SITE PLAN MAY VARY, INCLUDING ACCESS POINTS. COUNTY ENGINEER REVIEW IS REQUIRED PRIOR TO CHANGING ACCESS POINTS.
 2. MARKERS AT THE CORNERS AND CENTER OF PAD LABELED WITH A "C" OR "F" SIGNIFY "CUT" OR "FILL" DEPTHS FROM EXISTING GROUND TO PROPOSED GROUND.
 3. DELIVERY OF NON-POTABLE WATER FOR POTENTIAL STORAGE SHALL BE ACHIEVED WITH TEMPORARY OVERLAND PIPE OR DELIVERY TRUCK. IF WATER IS HAULED, THE PUBLIC WATER SYSTEM IDENTIFICATION NUMBER (PWSID) SHALL BE SUPPLIED TO TRI-COUNTY HEALTH DEPARTMENT (TCHD).
 4. SETBACKS FOR INDIVIDUAL SEWAGE DISPOSAL SYSTEMS SHALL CONFORM TO TCHD REGULATION NO. O-14. VAULT SYSTEMS SHALL BE PERMITTED AND INSPECTED BY TCHD.
 5. REFER TO GESC PLANS FOR RIPRAP DIMENSIONS.
 6. THE SITE LIMITS OF CONSTRUCTION ARE APPROXIMATELY 722' X 920' FOR THE PAD SITE AND THE TOTAL AREA OF DISTURBANCE IS 12.769 ACRES.
 7. REFER TO GESC PLAN FOR SEEDING SPECIFICATIONS.



ARAPAHOE COUNTY CASE NO. AE18-007

ConocoPhillips Company

STATE BIERSTADT #4-65 35-34 2AH, 2BH, 2CH, 2DH (PHASE 1),
STATE PIKES #4-65 36-31 2AH, 2BH, 2CH, 2DH (PHASE 2)
NE1/4 SEC. 35, T4S, R65W, 6TH P.M.
ARAPAHOE COUNTY, COLORADO
OIL & GAS OPERATIONS PLAN

REV	DATE	BY	REVISIONS
0	05-22-2018	C.J.C.	ISSUED FOR PERMIT
1	07-11-2018	C.J.C.	1st REVIEW COMMENT REVISIONS
2	09-21-2018	C.J.C.	2nd REVIEW COMMENT REVISIONS

SCALE: AS NOTED

DRAWN BY: C.J.C.

DATE DRAWN: 05-04-2018

UELS FILE NO.: C-6642

PROJ. NO: CON02-18-0018

ENGINEERING & LAND SURVEYING

UINTAH

CIVIL & STRUCTURAL ENGINEERING
AND LAND SURVEYING SERVICES

85 South 200 East, Vernal, UT 84078
O: 435.789.1017
www.uintahgroup.com

- SINCE 1964 -

PHASE 1
DRILLING
OPERATION
PLAN

SHEET
3
OF 9

ARAPAHOE COUNTY OIL & GAS OPERATIONS PLAN
ADMINISTRATIVE ENERGY USE BY SPECIAL REVIEW

STATE BIERSTADT #4-65 35-34 2AH, 2BH, 2CH, 2DH (PHASE 1),
STATE PIKES #4-65 36-31 2AH, 2BH, 2CH, 2DH (PHASE 2)

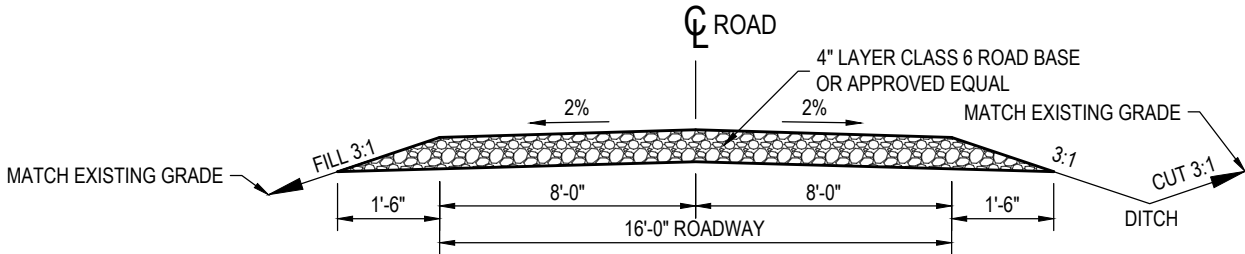
LOCATED IN:
NE1/4 SEC. 35, T4S, R65W, 6TH P.M.
ARAPAHOE COUNTY, COLORADO

Production Equipment
Representative Dimension Table

Item	Length (ft)	Width (ft)	Height (ft)	Diameter (ft)
400 Bbl Storage Tanks (Oil)			20	12
400 Bbl Storage Tanks (Water)			20	12
Generator	24	8	8	
Pumping Unit	32	8	34	
Combustor	6	6	25	4
Flare	5	5	30	1
Panel Rack	25	10	11	
Flare Knock Out	13	5	5	
Recycle Pump	2	3		
Meter Run	12	4	7	
Gas Compressor	30	15		
Vapor Recovery Tower			30	3
Vapor Recovery Unit	6	5	6	
Separator	40	8	15	
PLC	12	12	8	
Propane Tank	15	3	4	
Blowcase Skid	6	5	8	
Treater	30	5	12	
Transformer	25	10	10	

LEGEND:

---0000'---	EXISTING MAJOR CONTOUR (5')
---0000'---	EXISTING MINOR CONTOUR (1')
---0000'---	PROPOSED MAJOR CONTOUR (5')
---0000'---	PROPOSED MINOR CONTOUR (1')
---	LIMITS OF CONSTRUCTION
---	PAD BOUNDARY
---	DRAINAGE OR DIVERSION DITCH
---	EXISTING BURIED PIPELINE
---	PROPOSED BURIED PIPELINE
---	SEEDING AND MULCHING



TYPICAL ROADWAY CROSS-SECTION
16' WIDE ACCESS ROAD

NOTE:

1. PRODUCTION SITE PLAN LAYOUT IS FOR GRAPHICAL PURPOSES ONLY. ACTUAL SITE PLAN MAY VARY, INCLUDING ACCESS POINTS. COUNTY ENGINEER REVIEW IS REQUIRED PRIOR TO CHANGING ACCESS POINTS.
2. PERMANENT PRODUCTION SURFACE EQUIPMENT WILL BE PAINTED EARTH TONES AS REQUIRED BY COGCC.
3. SITE WILL BE GRADED BACK TO ORIGINAL ELEVATION AT FINAL RECLAMATION.
4. REFER TO GESC PLAN FOR SEEDING SPECIFICATIONS.

PHASE 1 - PRODUCTION SITE PLAN
SCALE: 1" = 120'

ARAPAHOE COUNTY CASE NO. AE18-007

ConocoPhillips Company

STATE BIERSTADT #4-65 35-34 2AH, 2BH, 2CH, 2DH (PHASE 1),
STATE PIKES #4-65 36-31 2AH, 2BH, 2CH, 2DH (PHASE 2)
NE1/4 SEC. 35, T4S, R65W, 6TH P.M.
ARAPAHOE COUNTY, COLORADO
OIL & GAS OPERATIONS PLAN

REV	DATE	BY	REVISIONS
0	05-22-2018	C.J.C.	ISSUED FOR PERMIT
1	07-11-2018	C.J.C.	1st REVIEW COMMENT REVISIONS
2	09-21-2018	C.J.C.	2nd REVIEW COMMENT REVISIONS

SCALE: AS NOTED
DRAWN BY: C.J.C.
DATE DRAWN: 05-04-2018
UELS FILE NO.: C-6642
PROJ. NO: CON02-18-0018



CIVIL & STRUCTURAL ENGINEERING
AND LAND SURVEYING SERVICES

85 South 200 East, Vernal, UT 84078
O: 435.789.1017
www.uintahgroup.com

- SINCE 1964 -

PHASE 1
PRODUCTION
PLAN

SHEET
4
OF 9

ARAPAHOE COUNTY OIL & GAS OPERATIONS PLAN
ADMINISTRATIVE ENERGY USE BY SPECIAL REVIEW

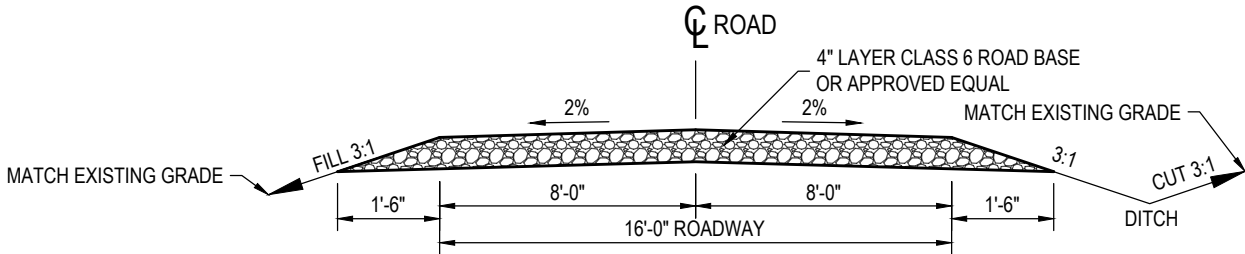
STATE BIERSTADT #4-65 35-34 2AH, 2BH, 2CH, 2DH (PHASE 1),
STATE PIKES #4-65 36-31 2AH, 2BH, 2CH, 2DH (PHASE 2)

LOCATED IN:
NE1/4 SEC. 35, T4S, R65W, 6TH P.M.
ARAPAHOE COUNTY, COLORADO

Production Equipment Representative Dimension Table				
Item	Length (ft)	Width (ft)	Height (ft)	Diameter (ft)
400 Bbl Storage Tanks (Oil)			20	12
400 Bbl Storage Tanks (Water)			20	12
Generator	24	8	8	
Pumping Unit	32	8	34	
Combustor	6	6	25	4
Flare	5	5	30	1
Panel Rack	25	10	11	
Flare Knock Out	13	5	5	
Recycle Pump	2	3		
Meter Run	12	4	7	
Gas Compressor	30	15		
Vapor Recovery Tower			30	3
Vapor Recovery Unit	6	5	6	
Separator	40	8	15	
PLC	12	12	8	
Propane Tank	15	3	4	
Blowcase Skid	6	5	8	
Treater	30	5	12	
Transformer	25	10	10	

LEGEND:

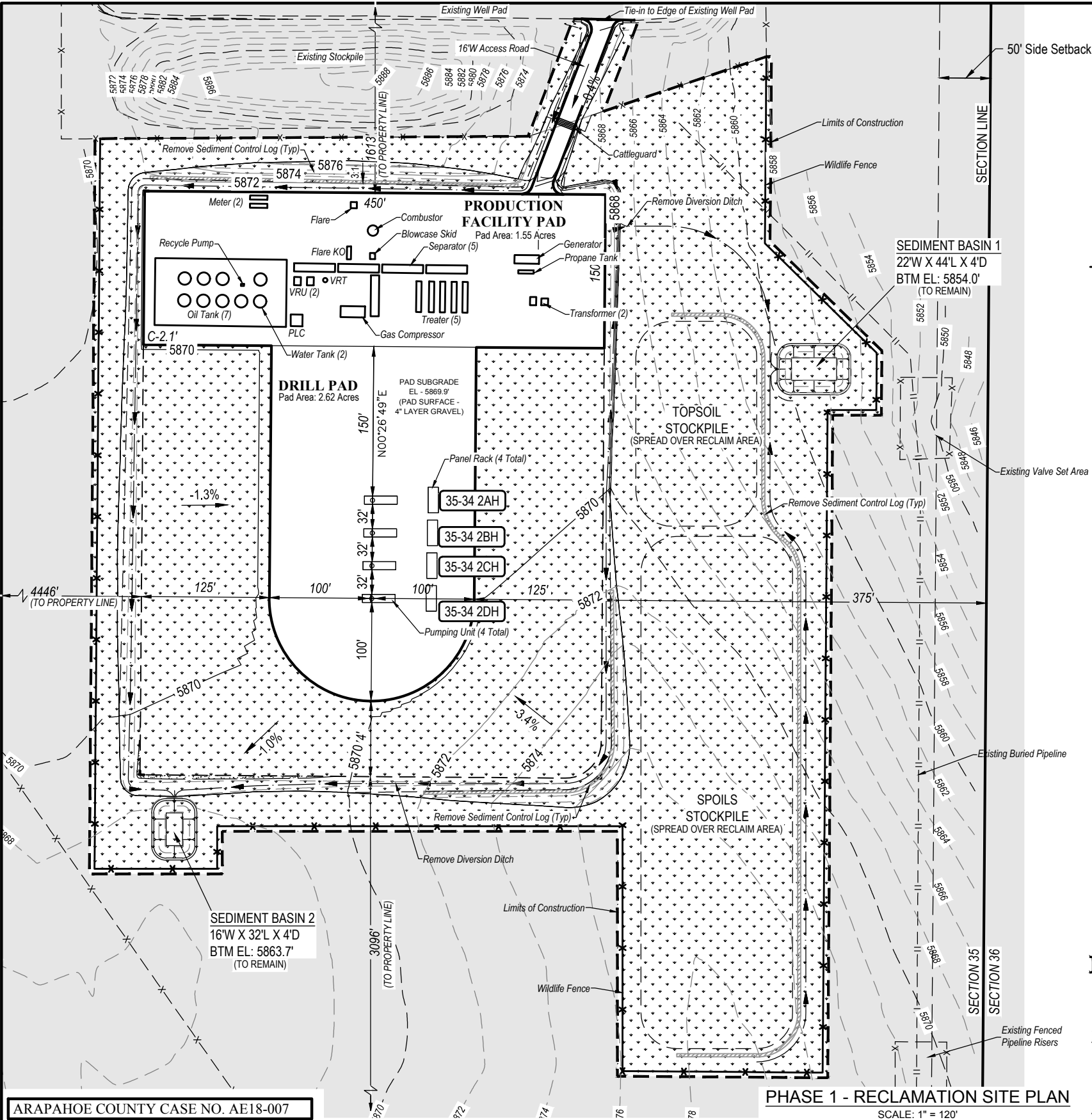
---0000'---	EXISTING MAJOR CONTOUR (5')
---0000'---	EXISTING MINOR CONTOUR (1')
---0000'---	PROPOSED MAJOR CONTOUR (5')
---0000'---	PROPOSED MINOR CONTOUR (1')
---	LIMITS OF CONSTRUCTION
---	PAD BOUNDARY
---	DRAINAGE OR DIVERSION DITCH
---	EXISTING BURIED PIPELINE
---	PROPOSED BURIED PIPELINE
---	SEEDING AND MULCHING



TYPICAL ROADWAY CROSS-SECTION
16' WIDE ACCESS ROAD

NOTE:

1. PRODUCTION SITE PLAN LAYOUT IS FOR GRAPHICAL PURPOSES ONLY. ACTUAL SITE PLAN MAY VARY, INCLUDING ACCESS POINTS. COUNTY ENGINEER REVIEW IS REQUIRED PRIOR TO CHANGING ACCESS POINTS.
2. PERMANENT PRODUCTION SURFACE EQUIPMENT WILL BE PAINTED EARTH TONES AS REQUIRED BY COGCC.
3. SITE WILL BE GRADED BACK TO ORIGINAL ELEVATION AT FINAL RECLAMATION.
4. REFER TO GESC PLAN FOR SEEDING SPECIFICATIONS.



ARAPAHOE COUNTY CASE NO. AE18-007

ConocoPhillips Company
STATE BIERSTADT #4-65 35-34 2AH, 2BH, 2CH, 2DH (PHASE 1),
STATE PIKES #4-65 36-31 2AH, 2BH, 2CH, 2DH (PHASE 2)
NE1/4 SEC. 35, T4S, R65W, 6TH P.M.
ARAPAHOE COUNTY, COLORADO
OIL & GAS OPERATIONS PLAN

REV	DATE	BY	REVISIONS
0	05-22-2018	C.J.C.	ISSUED FOR PERMIT
1	07-11-2018	C.J.C.	1st REVIEW COMMENT REVISIONS
2	09-21-2018	C.J.C.	2nd REVIEW COMMENT REVISIONS

SCALE: AS NOTED
DRAWN BY: C.J.C.
DATE DRAWN: 05-04-2018
UELS FILE NO.: C-6642
PROJ. NO: CON02-18-0018



CIVIL & STRUCTURAL ENGINEERING
AND LAND SURVEYING SERVICES
85 South 200 East, Vernal, UT 84078
O: 435.789.1017
www.uintahgroup.com
- SINCE 1964 -

**PHASE 1
RECLAMATION
PLAN**
**SHEET
5
OF 9**

ARAPAHOE COUNTY OIL & GAS OPERATIONS PLAN
ADMINISTRATIVE ENERGY USE BY SPECIAL REVIEW

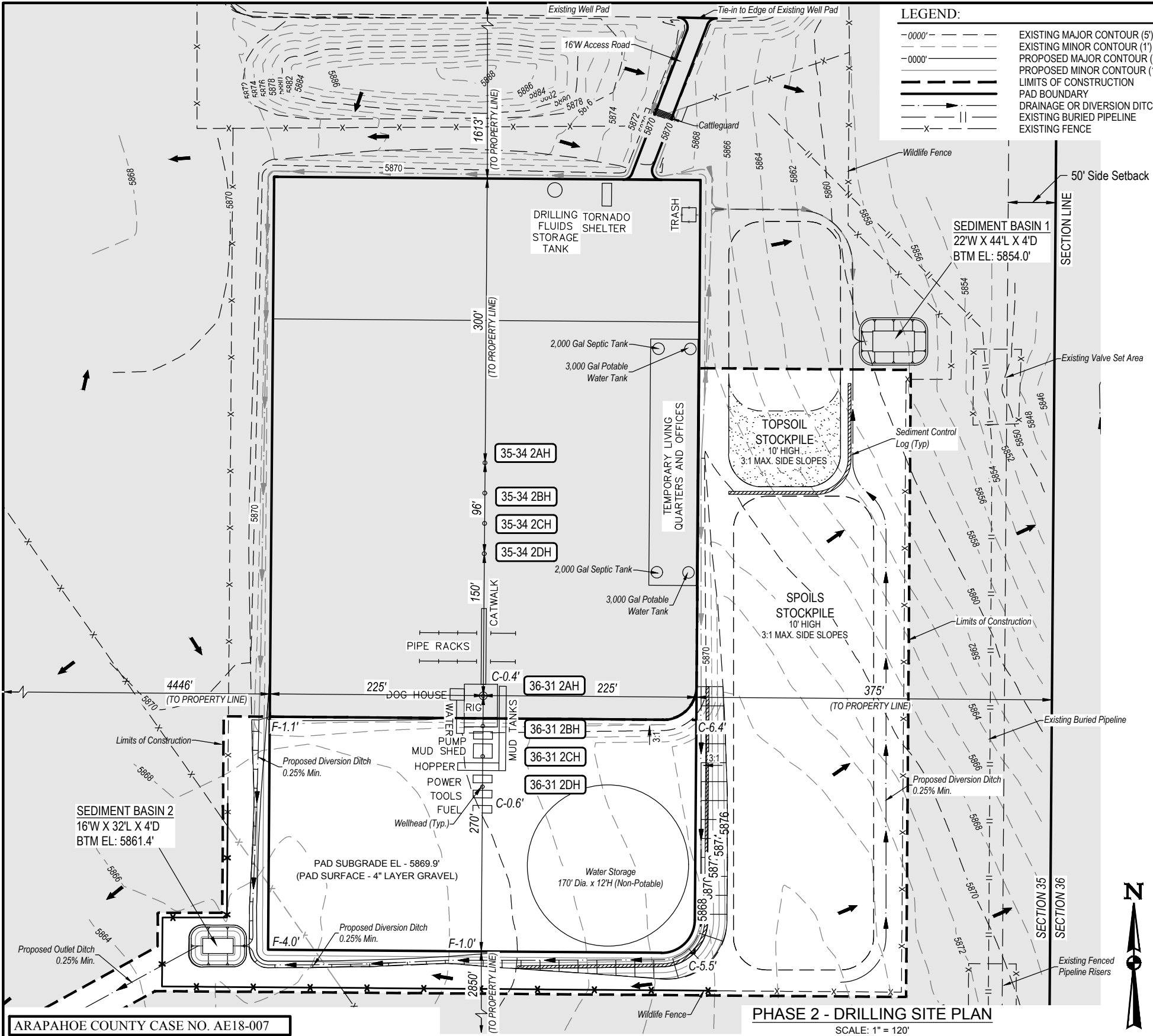
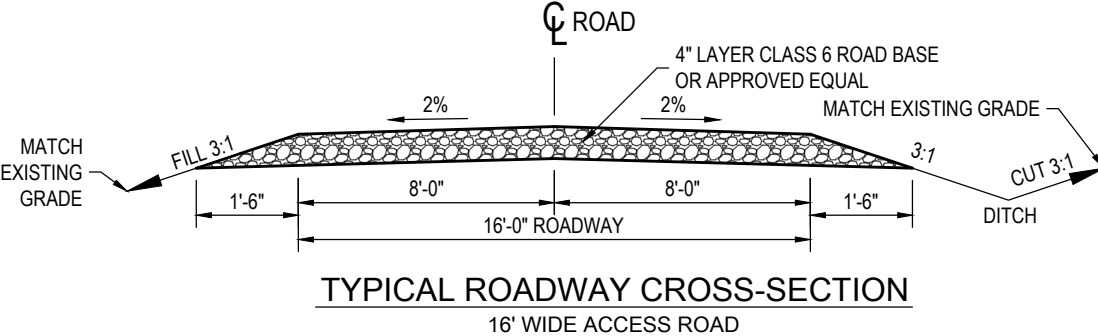
STATE BIERSTADT #4-65 35-34 2AH, 2BH, 2CH, 2DH (PHASE 1),
STATE PIKES #4-65 36-31 2AH, 2BH, 2CH, 2DH (PHASE 2)

LOCATED IN:
NE1/4 SEC. 35, T4S, R65W, 6TH P.M.
ARAPAHOE COUNTY, COLORADO

Drilling Equipment
Representative Dimension Table

Item	Qty	Length (ft)	Width (ft)	Height (ft)	Diameter (ft)
Hopper	1	51	12	12	
Mud Shed	1	33	14	11	
Mud Tanks	2	45	11	11	
Drilling Rig	1	45	35	100	
Pump	1	33	14	11	
Power	1	30	11	11	
Tools	1	43	12	11	
Fuel	1	30	11	10	
Dog House	1	29	10	9	
Catwalk	2	58	9	8	
Pipe Rack (long)	2	60	-	-	
Pipe Rack (short)	2	26	-	-	
Water Tank	1	47	10	11	
Storage Tank	1	-	-	20	16
Trash Dumpster	1	15	15	6	
Temp. Water Storage	1	-	-	12	170
Temp Living	1	350	50	14	
Septic Tank	2			4	12
Potable Water Tank	2			4	12
Tornado Shelter	1	24	10	10	

- NOTE:
- DRILLING SITE PLAN LAYOUT IS FOR GRAPHICAL PURPOSES ONLY. ACTUAL SITE PLAN MAY VARY, INCLUDING ACCESS POINTS. COUNTY ENGINEER REVIEW IS REQUIRED PRIOR TO CHANGING ACCESS POINTS.
 - MARKERS AT THE CORNERS AND CENTER OF PAD LABELED WITH A "C" OR "F" SIGNIFY "CUT" OR "FILL" DEPTHS FROM EXISTING GROUND TO PROPOSED GROUND.
 - DELIVERY OF NON-POTABLE WATER FOR POTENTIAL STORAGE SHALL BE ACHIEVED WITH TEMPORARY OVERLAND PIPE OR DELIVERY TRUCK. IF WATER IS HAULED, THE PUBLIC WATER SYSTEM IDENTIFICATION NUMBER (PWSID) SHALL BE SUPPLIED TO TRI-COUNTY HEALTH DEPARTMENT (TCHD).
 - SETBACKS FOR INDIVIDUAL SEWAGE DISPOSAL SYSTEMS SHALL CONFORM TO TCHD REGULATION NO. O-14. VAULT SYSTEMS SHALL BE PERMITTED AND INSPECTED BY TCHD.
 - REFER TO GESC PLANS FOR RIPRAP DIMENSIONS.
 - THE SITE LIMITS OF CONSTRUCTION ARE APPROXIMATELY 790' X 660' FOR THE PAD SITE AND THE TOTAL AREA OF DISTURBANCE IS 7.013 ACRES.
 - REFER TO GESC PLAN FOR SEEDING SPECIFICATIONS.



ARAPAHOE COUNTY CASE NO. AE18-007

ConocoPhillips Company
STATE BIERSTADT #4-65 35-34 2AH, 2BH, 2CH, 2DH (PHASE 1),
STATE PIKES #4-65 36-31 2AH, 2BH, 2CH, 2DH (PHASE 2)
NE1/4 SEC. 35, T4S, R65W, 6TH P.M.
ARAPAHOE COUNTY, COLORADO
OIL & GAS OPERATIONS PLAN

DATE	BY	REVISIONS
05-22-2018	C.J.C.	ISSUED FOR PERMIT
07-11-2018	C.J.C.	1st REVIEW COMMENT REVISIONS
09-21-2018	C.J.C.	2nd REVIEW COMMENT REVISIONS

SCALE: AS NOTED
DRAWN BY: C.J.C.
DATE DRAWN: 05-04-2018
UELS FILE NO.: C-6642
PROJ. NO: CON02-18-0018



CIVIL & STRUCTURAL ENGINEERING
AND LAND SURVEYING SERVICES
85 South 200 East, Vernal, UT 84078
O: 435.789.1017
www.uintahgroup.com
- SINCE 1964 -

**PHASE 2
DRILLING
OPERATION
PLAN**

**SHEET
6
OF 9**

ARAPAHOE COUNTY OIL & GAS OPERATIONS PLAN
ADMINISTRATIVE ENERGY USE BY SPECIAL REVIEW

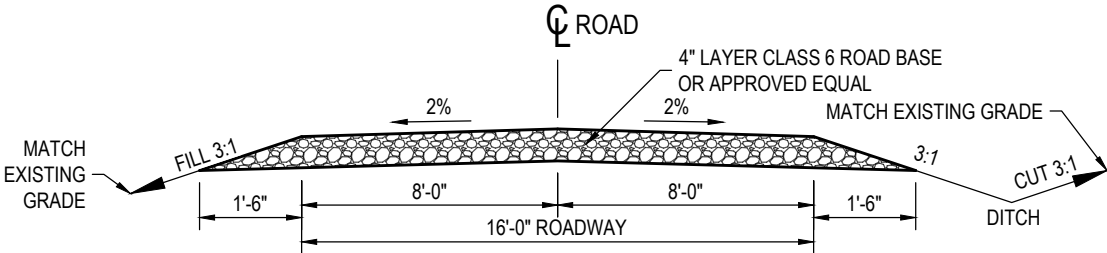
STATE BIERSTADT #4-65 35-34 2AH, 2BH, 2CH, 2DH (PHASE 1),
STATE PIKES #4-65 36-31 2AH, 2BH, 2CH, 2DH (PHASE 2)

LOCATED IN:
NE1/4 SEC. 35, T4S, R65W, 6TH P.M.
ARAPAHOE COUNTY, COLORADO

LEGEND:

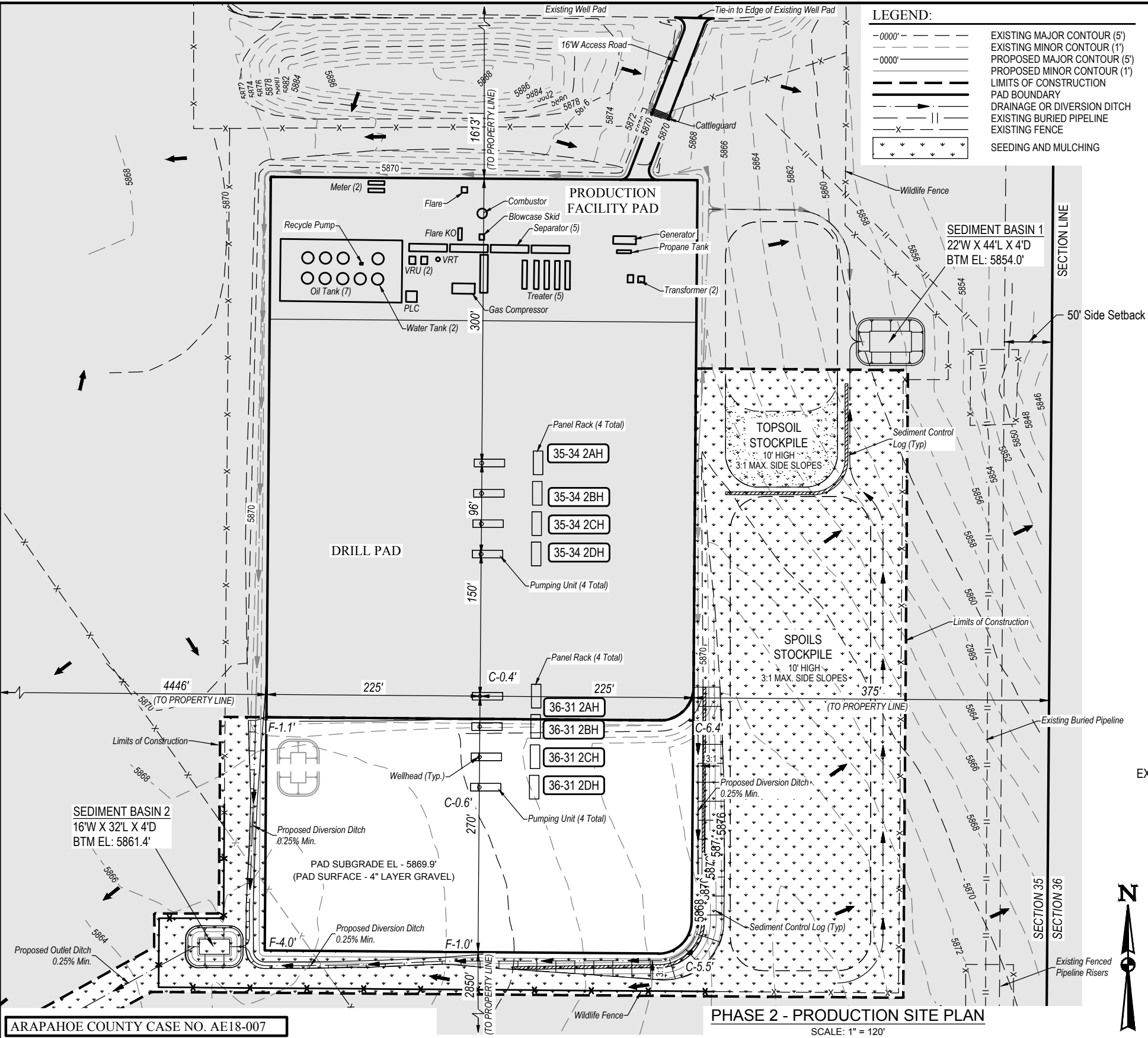
---	EXISTING MAJOR CONTOUR (5')
- - -	EXISTING MINOR CONTOUR (1')
- - -	PROPOSED MAJOR CONTOUR (5')
- - -	PROPOSED MINOR CONTOUR (1')
---	LIMITS OF CONSTRUCTION
---	PAD BOUNDARY
---	DRAINAGE OR DIVERSION DITCH
---	EXISTING BURIED PIPELINE
---	EXISTING FENCE
---	SEEDING AND MULCHING

Production Equipment Representative Dimension Table				
Item	Length (ft)	Width (ft)	Height (ft)	Diameter (ft)
400 Bbl Storage Tanks (Oil)			20	12
400 Bbl Storage Tanks (Water)			20	12
Generator	25	10	10	
Pumping Unit	32	8	34	
Combustor	6	6	25	4
Flare	5	5	30	1
Panel Rack	25	10	11	
Flare Knock Out	13	5	5	
Recycle Pump	2	3		
Meter Run	12	4	7	
Gas Compressor	30	15		
Vapor Recovery Tower			30	3
Vapor Recovery Unit	6	5	6	
Separator	40	8	15	
PLC	12	12	8	
Propane Tank	15	3	4	
Blowcase Skid	6	5	8	
Treater	30	5	12	
Transformer	8	6	6	



TYPICAL ROADWAY CROSS-SECTION
16' WIDE ACCESS ROAD

- NOTE:
1. PRODUCTION SITE PLAN LAYOUT IS FOR GRAPHICAL PURPOSES ONLY. ACTUAL SITE PLAN MAY VARY, INCLUDING ACCESS POINTS. COUNTY ENGINEER REVIEW IS REQUIRED PRIOR TO CHANGING ACCESS POINTS.
 2. PERMANENT PRODUCTION SURFACE EQUIPMENT WILL BE PAINTED EARTH TONES AS REQUIRED BY COGCC.
 3. SITE WILL BE GRADED BACK TO ORIGINAL ELEVATION AT FINAL RECLAMATION.
 4. REFER TO GESC PLAN FOR SEEDING SPECIFICATIONS.



ARAPAHOE COUNTY CASE NO. AE18-007

ConocoPhillips Company
STATE BIERSTADT #4-65 35-34 2AH, 2BH, 2CH, 2DH (PHASE 1),
STATE PIKES #4-65 36-31 2AH, 2BH, 2CH, 2DH (PHASE 2)
NE1/4 SEC. 35, T4S, R65W, 6TH P.M.
ARAPAHOE COUNTY, COLORADO
OIL & GAS OPERATIONS PLAN

REV	DATE	BY	REVISIONS
0	05-22-2018	C.J.C.	ISSUED FOR PERMIT
1	07-11-2018	C.J.C.	1st REVIEW COMMENT REVISIONS
2	09-21-2018	C.J.C.	2nd REVIEW COMMENT REVISIONS

SCALE: AS NOTED
DRAWN BY: C.J.C.
DATE DRAWN: 05-04-2018
UELS FILE NO.: C-6642
PROJ. NO: CON02-18-0018



CIVIL & STRUCTURAL ENGINEERING
AND LAND SURVEYING SERVICES
85 South 200 East, Vernal, UT 84078
O: 435.789.1017
www.uintahgroup.com
- SINCE 1964 -

**PHASE 2
PRODUCTION
PLAN**

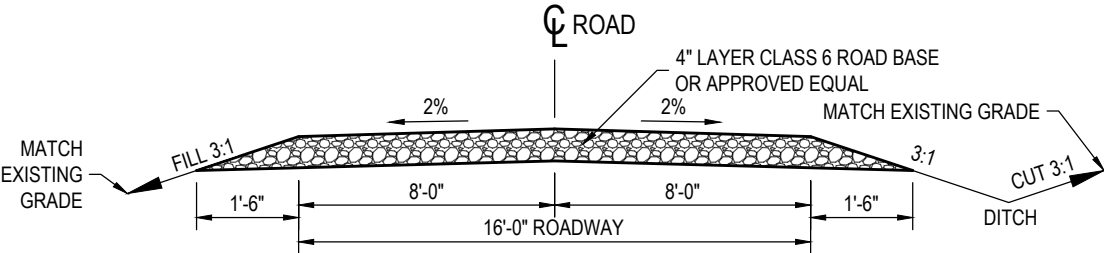
**SHEET
7
OF 9**

ARAPAHOE COUNTY OIL & GAS OPERATIONS PLAN
ADMINISTRATIVE ENERGY USE BY SPECIAL REVIEW

STATE BIERSTADT #4-65 35-34 2AH, 2BH, 2CH, 2DH (PHASE 1),
STATE PIKES #4-65 36-31 2AH, 2BH, 2CH, 2DH (PHASE 2)

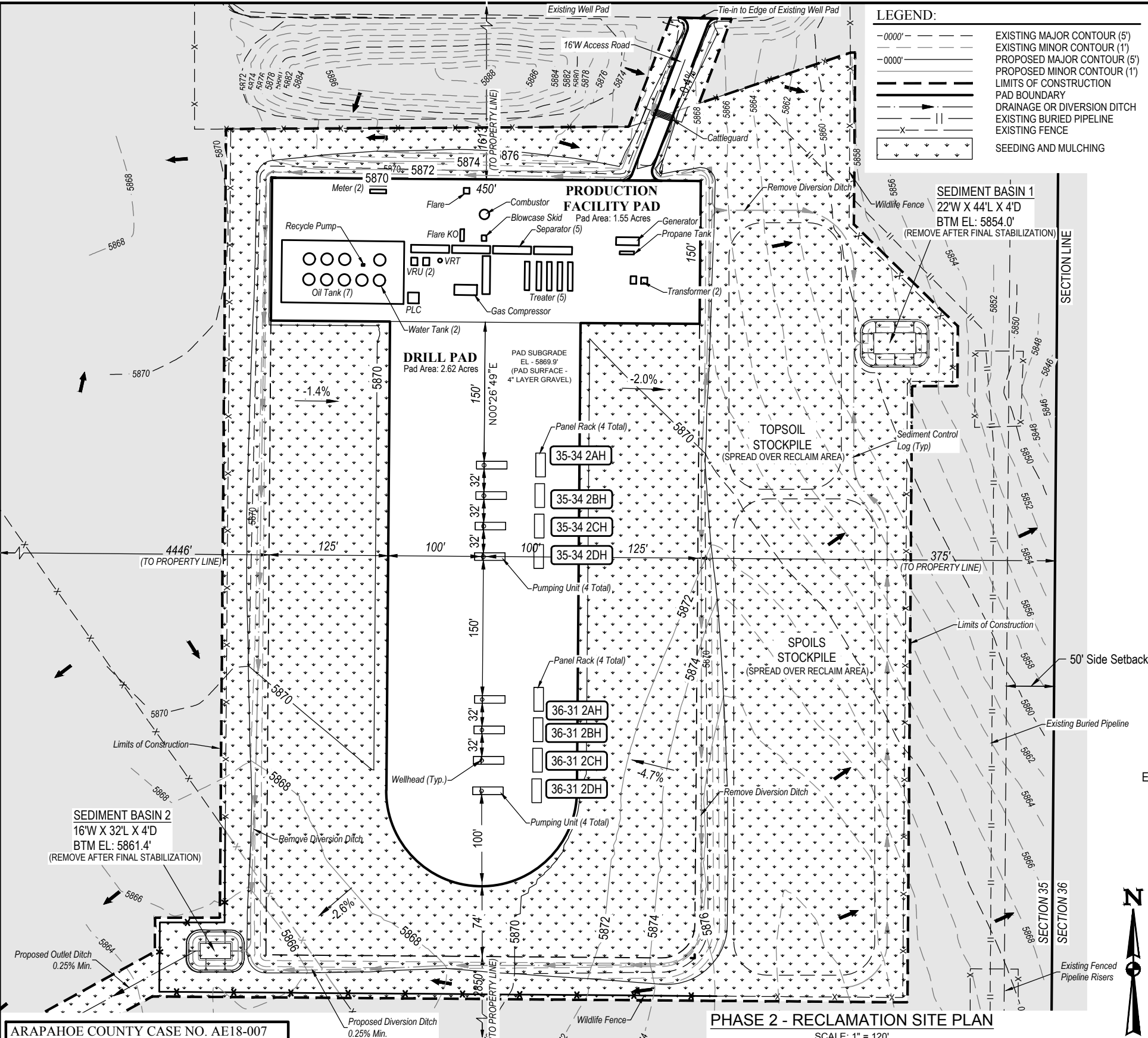
LOCATED IN:
NE1/4 SEC. 35, T4S, R65W, 6TH P.M.
ARAPAHOE COUNTY, COLORADO

Production Equipment Representative Dimension Table				
Item	Length (ft)	Width (ft)	Height (ft)	Diameter (ft)
400 Bbl Storage Tanks (Oil)			20	12
400 Bbl Storage Tanks (Water)			20	12
Generator	25	10	10	
Pumping Unit	32	8	34	
Combustor	6	6	25	4
Flare	5	5	30	1
Panel Rack	25	10	11	
Flare Knock Out	13	5	5	
Recycle Pump	2	3		
Meter Run	12	4	7	
Gas Compressor	30	15		
Vapor Recovery Tower			30	3
Vapor Recovery Unit	6	5	6	
Separator	40	8	15	
PLC	12	12	8	
Propane Tank	15	3	4	
Blowcase Skid	6	5	8	
Treater	30	5	12	
Transformer	8	6	6	



TYPICAL ROADWAY CROSS-SECTION
16' WIDE ACCESS ROAD

- NOTE:
1. PRODUCTION SITE PLAN LAYOUT IS FOR GRAPHICAL PURPOSES ONLY. ACTUAL SITE PLAN MAY VARY, INCLUDING ACCESS POINTS. COUNTY ENGINEER REVIEW IS REQUIRED PRIOR TO CHANGING ACCESS POINTS.
 2. PERMANENT PRODUCTION SURFACE EQUIPMENT WILL BE PAINTED EARTH TONES AS REQUIRED BY COGCC.
 3. SITE WILL BE GRADED BACK TO ORIGINAL ELEVATION AT FINAL RECLAMATION.
 4. REFER TO GESC PLAN FOR SEEDING SPECIFICATIONS.



ARAPAHOE COUNTY CASE NO. AE18-007

PHASE 2 - RECLAMATION SITE PLAN
SCALE: 1" = 120'

ConocoPhillips Company
STATE BIERSTADT #4-65 35-34 2AH, 2BH, 2CH, 2DH (PHASE 1),
STATE PIKES #4-65 36-31 2AH, 2BH, 2CH, 2DH (PHASE 2)
NE1/4 SEC. 35, T4S, R65W, 6TH P.M.
ARAPAHOE COUNTY, COLORADO
OIL & GAS OPERATIONS PLAN

REV	DATE	BY	REVISIONS
0	05-22-2018	C.J.C.	ISSUED FOR PERMIT
1	07-11-2018	C.J.C.	1st REVIEW COMMENT REVISIONS
2	09-21-2018	C.J.C.	2nd REVIEW COMMENT REVISIONS

SCALE: AS NOTED
DRAWN BY: C.J.C.
DATE DRAWN: 05-04-2018
UELS FILE NO.: C-6642
PROJ. NO: CON02-18-0018



CIVIL & STRUCTURAL ENGINEERING
AND LAND SURVEYING SERVICES
85 South 200 East, Vernal, UT 84078
O: 435.789.1017
www.uintahgroup.com
- SINCE 1964 -

**PHASE 2
RECLAMATION
PLAN**

**SHEET
8
OF 9**

E:\FILE 1\ConocoPhillips\State Bierstadt 4-65 35-34\DWG\State Bierstadt 4-65 35-34 AEUSR Plan.dwg

ARAPAHOE COUNTY OIL & GAS OPERATIONS PLAN
ADMINISTRATIVE ENERGY USE BY SPECIAL REVIEW
STATE BIERSTADT #4-65 35-34 2AH, 2BH, 2CH, 2DH (PHASE 1),
STATE PIKES #4-65 36-31 2AH, 2BH, 2CH, 2DH (PHASE 2)

GENERAL NOTES:

1. THE SITE PLAN, EQUIPMENT AND INFORMATION SHOWN HEREIN ARE FOR REFERENCE ONLY AND ARE NOT INTENDED TO BE USED FOR CONSTRUCTION. ENGINEERED USE BY SPECIAL REVIEW DRAWINGS RELATIVE TO THIS SITE WILL BE SUBMITTED AND APPROVED FOLLOWING ALL APPLICABLE ARAPAHOE COUNTY STANDARDS AND PROCEDURES.
2. THE DIMENSIONS AND LAYOUT DEPICTED IN THE SITE PLAN SHOWN ARE REPRESENTATIVE OF A TYPICAL WELL SITE. ACTUAL DIMENSIONS AND LAYOUT MAY CHANGE BASED ON THE VARIABILITY OF THE EQUIPMENT.
3. THE PROPOSED DRILL SITE WILL BE APPROXIMATELY 15.74 ACRES IN SIZE AND CONSTRUCTION OF THIS SITE WILL INCLUDE LEVELING THE PAD TO ACCOMMODATE THE DRILLING RIG. ONCE THE PAD IS COMPLETED, DRILLING RIG EQUIPMENT WILL BE BROUGHT ONTO LOCATION AND RIGGED UP. DRILLING OPERATIONS, WHICH RUN 24 HOURS A DAY UNTIL COMPLETED, WILL COMMENCE AFTER THE RIG IS "RIGGED UP". THE SURFACE HOLE WILL BE DRILLED TO APPROXIMATELY 2000 FEET USING FRESH WATER. SURFACE CASING WILL THEN BE RUN AND CEMENTED TO SURFACE TO PROTECT ANY SHALLOW FRESH WATER ZONES. SURFACE CASING SETTING DEPTH IS DETERMINED FROM SUBSURFACE GROUND WATER MAPS PREPARED BY THE STATE ENGINEER AND SUPPLEMENTED BY THE LATEST DATA AVAILABLE FROM OFFSETTING WELLS.
4. CONOCOPHILLIPS COMPANY'S DRILLING RIGS ARE EQUIPPED WITH A CLOSED LOOP SYSTEM, THEREFORE, WATER USED FOR DRILLING IS RECYCLED AND RE-USED, AND RESERVE PITS WILL NOT BE CONSTRUCTED. THE DRILLING RIG WILL BE ON LOCATION FOR APPROXIMATELY 6-12 DAYS PER HORIZONTAL WELL. AT THE END OF THE DRILLING PHASE, THE DRILLING RIG WILL BE MOVED OFF LOCATION.
5. THE COMPLETION PHASE BEGINS WHEN THE DRILLING EQUIPMENT IS TRANSPORTED OFF THE LOCATION. COMPLETION OPERATIONS ARE CONDUCTED 24 HOURS PER DAY INTERMITTENTLY OVER A PERIOD OF SEVERAL WEEKS. THE SITE MAY BE BLADED AND LEVELED TO ACCOMMODATE THE COMPLETION RIG AND ANCHORS MAY BE SET FOR THE COMPLETION RIG. ADDITIONAL OPERATIONS INCLUDING CEMENTING, DRILLING AND LOGGING MAY OCCUR AS CIRCUMSTANCES REQUIRE. FOR HORIZONTAL WELLS, MULTIPLE FRACTURE STAGES ARE INDUCED ALONG THE LENGTH OF THE WELLBORE IN THE RESPECTIVE FORMATION INTO WHICH THE WELL HAS BEEN DRILLED.
6. THE PRODUCTION EQUIPMENT FOR THESTATE BIERSTADT #4-65 35-34 2AH, 2BH, 2CH, 2DH (PHASE 1), STATE PIKES #4-65 36-31 2AH, 2BH, 2CH, 2DH (PHASE 2) WILL BE LOCATED ADJACENT TO THE WELLS. THE EQUIPMENT ON THE STATE BIERSTADT #4-65 35-34 2AH, 2BH, 2CH, 2DH (PHASE 1), STATE PIKES #4-65 36-31 2AH, 2BH, 2CH, 2DH (PHASE 2) PAD WILL CONSIST OF OIL TANKS, WATER TANKS, SEPARATORS, VRTS, VRUS, ECD, COMPRESSOR, PUMP JACKS, VOC COMBUSTORS, AND PROPOSED ELECTRICAL AND/OR SOLAR EQUIPMENT. ALL QUANTITIES FOR THESE ITEMS CAN BE FOUND ON THE PRODUCTION EQUIPMENT TABLE ON PAGES 4 AND 7. TANKS AND FACILITIES SHALL BE PAINTED PER COGCC RULES. THE STEEL BERMS AROUND THE TANKS WILL HOLD 150% OF THE CAPACITY OF THE LARGEST TANK WITHIN THE BERM AND WILL BE PAINTED TO MATCH THE TANKS AND OTHER EQUIPMENT. THE STEEL BERMS AROUND THE TANKS WILL BE INSPECTED WEEKLY AND FOLLOWING A PRECIPITATION EVENT.
7. AT THE TIME THE WELLS BECOMES SUB-ECONOMIC TO OPERATE, THE OPERATOR OR ITS SUCESSORS WILL ENGAGE THE SERVICES OF A PLUGGING RIG TO REMOVE PRODUCTION EQUIPMENT FROM THE WELLBORES AND PLUG THE PRODUCTIVE ZONES WITH A COMBINATION OF BRIDGE PLUGS AND CEMENT PLUGS IN ACCORDANCE WITH RULE 319.A OF THE RULES AND REGULATIONS PROMULGATED BY THE COGCC. IF THE SEPARATORS AND TANKS ON THE SURFACE OF THE LAND ARE NO LONGER NEEDED FOR OTHER WELLS, THEY WILL BE REMOVED. SURFACE RESTORATION WILL INVOLVE REMOVAL OF ANY ABOVE-GROUND CASING AND THE INSTALLATION OF REGULATION MARKERS THAT WILL NOT INTERFERE WITH SUBSEQUENT SURFACE USE.

LOCATED IN:
NE1/4 SEC. 35, T4S, R65W, 6TH P.M.
ARAPAHOE COUNTY, COLORADO

WATER SOURCE NOTE:

1. AN MLV TANK WILL BE USED TO STORE NON-POTABLE WATER FOR DRILLING USE.

APPLICABLE COGCC STANDARDS:

THE FOLLOWING COGCC STANDARDS ARE FOR REFERENCE AND ARE NOT INCLUSIVE OF ALL STATE RULES RELATIVE TO OIL AND GAS OPERATIONS. THESE RULES HAVE BEEN ABBREVIATED FROM THEIR ORIGINAL FORMAT TO DENOTE COMPLIANCE WITH THE COGCC. ALL WORK SHALL BE IN COMPLIANCE WITH APPLICABLE COGCC REGULATIONS.

802. NOISE ABATEMENT (MODIFIED)

- a. THE GOAL OF THIS RULE IS TO IDENTIFY NOISE SOURCES RELATED TO OIL AND GAS OPERATIONS THAT IMPACT SURROUNDING RESIDENTS AND TO BRING OIL AND GAS FACILITIES INTO COMPLIANCE WITH THE ALLOWABLE NOISE LEVELS IDENTIFIED IN SUBSECTION C.
- b. OIL AND GAS OPERATIONS AT ANY WELL SITE, PRODUCTION FACILITY, OR GAS FACILITY SHALL COMPLY WITH THE FOLLOWING MAXIMUM PERMISSIBLE NOISE LEVELS:

	7AM TO 7PM	7PM TO NEXT 7 AM
LIGHT INDUSTRIAL	70 db(A)	65db(A)
INDUSTRIAL	80 db(A)	75db(A)

IN REMOTE LOCATIONS, WHERE THERE IS NO REASONABLY PROXIMATE OCCUPIED STRUCTURE OR DESIGNATED OUTSIDE ACTIVITY AREA, THE LIGHT INDUSTRIAL STANDARD MAY BE APPLICABLE.

- c. IN THE HOURS BETWEEN 7AM AND THE NEXT 7 PM THE NOISE LEVELS PERMITTED MAY BE INCREASED 10 db(A) FOR A PERIOD NOT TO EXCEED 15 MINUTES IN ANY ONE HOUR.

803. LIGHTING (MODIFIED)

ALL SIGHT LIGHTING SHALL BE DIRECTED DOWNWARD AND INTERNALLY TO AVOID GLARE.

SIGNAGE:



ENTRY SIGN TO BE PLACED AT WELL ACCESS
ROAD INTERSECTION WITH PUBLIC ROAD
SIZE: 1.5' X 2'



ENTRY SIGN TO BE PLACED AT WELL HEAD
SIZE: 2' X 3'



ENTRY SIGN TO BE PLACED AT TANK BATTERY
SIZE: 2' X 3'

ARAPAHOE COUNTY CASE NO. AE18-007

ConocoPhillips Company

STATE BIERSTADT #4-65 35-34 2AH, 2BH, 2CH, 2DH (PHASE 1),
STATE PIKES #4-65 36-31 2AH, 2BH, 2CH, 2DH (PHASE 2)
NE1/4 SEC. 35, T4S, R65W, 6TH P.M.
ARAPAHOE COUNTY, COLORADO
OIL & GAS OPERATIONS PLAN

REV	DATE	BY	REVISIONS
0	05-22-2018	C.J.C.	ISSUED FOR PERMIT
1	07-11-2018	C.J.C.	1st REVIEW COMMENT REVISIONS
2	09-21-2018	C.J.C.	2nd REVIEW COMMENT REVISIONS

SCALE: NO SCALE
DRAWN BY: C.J.C.
DATE DRAWN: 05-04-2018
UELS FILE NO.: C-6642
PROJ. NO: CON02-18-0018



CIVIL & STRUCTURAL ENGINEERING
AND LAND SURVEYING SERVICES

85 South 200 East, Vernal, UT 84078
O: 435.789.1017
www.uintahgroup.com

- SINCE 1964 -

STANDARD
NOTES /
SIGNAGE
DETAILS

SHEET
9
OF 9