

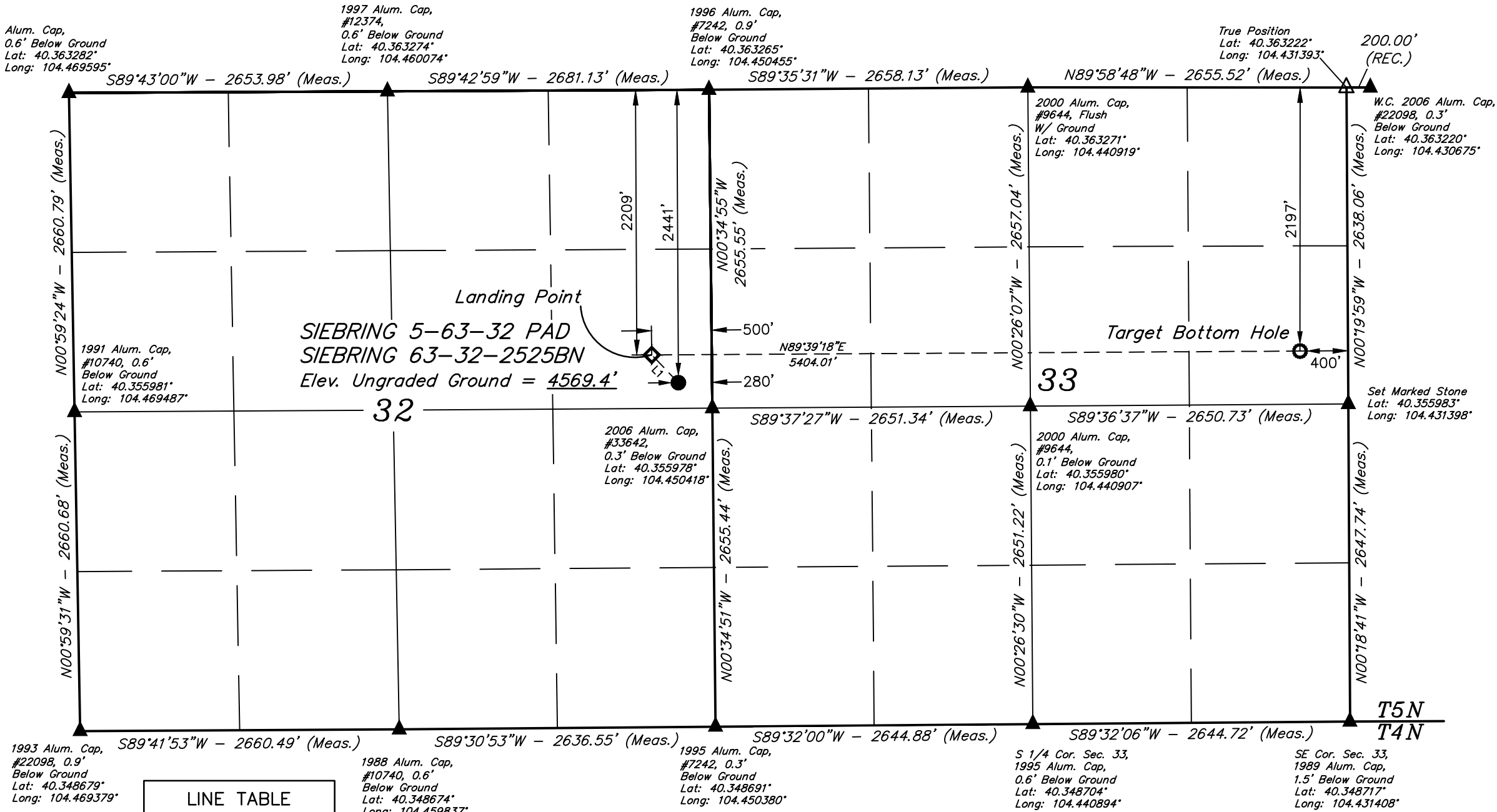
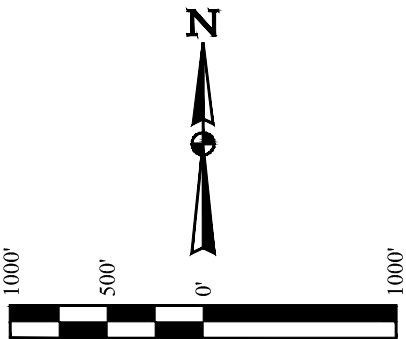
T5N, R63W, 6th P.M.

HIGHPOINT OPERATING CORPORATION

SIEBRING 5-63-32 PAD  
SIEBRING 63-32-2525BN  
SE 1/4 NE 1/4, SECTION 32, T5N, R63W, 6th P.M.  
WELD COUNTY, COLORADO

BASIS OF BEARINGS  
TRANSVERSE MERCATOR PROJECTION WITH  
A CENTRAL MERIDIAN OF W105°00'00".

BASIS OF ELEVATION  
OPUS SOLUTION GENERATED NAVD 88



LINE TABLE		
LINE	DIRECTION	LENGTH
L1	N43°52'30"W	320.12'

- LEGEND:
- = PROPOSED WELLHEAD.
  - ◆ = LANDING POINT.
  - = TARGET BOTTOM HOLE.
  - ▲ = SECTION CORNERS LOCATED. (NAD 83)
  - △ = SECTION CORNERS RE-ESTABLISHED. (Not Set on Ground.) (NAD 83)

NOTE:  
DISTANCES REFERENCED ON PLAT TO  
SECTION LINES ARE PERPENDICULAR.

NAD 83 (SURFACE LOCATION)	NAD 83 (LANDING POINT)	NAD 83 (TARGET BOTTOM HOLE)
LATITUDE = 40°21'23.64" (40.356568°)	LATITUDE = 40°21'25.94" (40.357205°)	LATITUDE = 40°21'25.92" (40.357200°)
LONGITUDE = 104°27'05.14" (104.451427°)	LONGITUDE = 104°27'07.98" (104.452218°)	LONGITUDE = 104°25'58.20" (104.432832°)
NAD 27 (SURFACE LOCATION)	NAD 27 (LANDING POINT)	NAD 27 (TARGET BOTTOM HOLE)
LATITUDE = 40°21'23.71" (40.356587°)	LATITUDE = 40°21'26.00" (40.357224°)	LATITUDE = 40°21'25.99" (40.357219°)
LONGITUDE = 104°27'03.30" (104.450916°)	LONGITUDE = 104°27'06.14" (104.451707°)	LONGITUDE = 104°25'56.36" (104.432322°)
STATE PLANE NAD 83 (CO. NORTH)	STATE PLANE NAD 83 (CO. NORTH)	STATE PLANE NAD 83 (CO. NORTH)
N: 1374465.94' E: 3292218.80'	N: 1374695.38' E: 3291995.69'	N: 1374758.29' E: 3297397.73'
STATE PLANE NAD 27 (CO. NORTH)	STATE PLANE NAD 27 (CO. NORTH)	STATE PLANE NAD 27 (CO. NORTH)
N: 374467.85' E: 2292368.79'	N: 374697.28' E: 2292145.69'	N: 374760.20' E: 2297547.73'

PDOP = 1.4

REV: 1 03-20-19 J.U. (UPDATE PAD NAME)



UELS, LLC  
Corporate Office \* 85 South 200 East  
Vernal, UT 84078 \* (435) 789-1017

SURVEYED BY	RYAN WILLIAMS, D.E.	02-26-19	SCALE
DRAWN BY	J.U.	03-01-19	1" = 1000'

WELL LOCATION PLAT