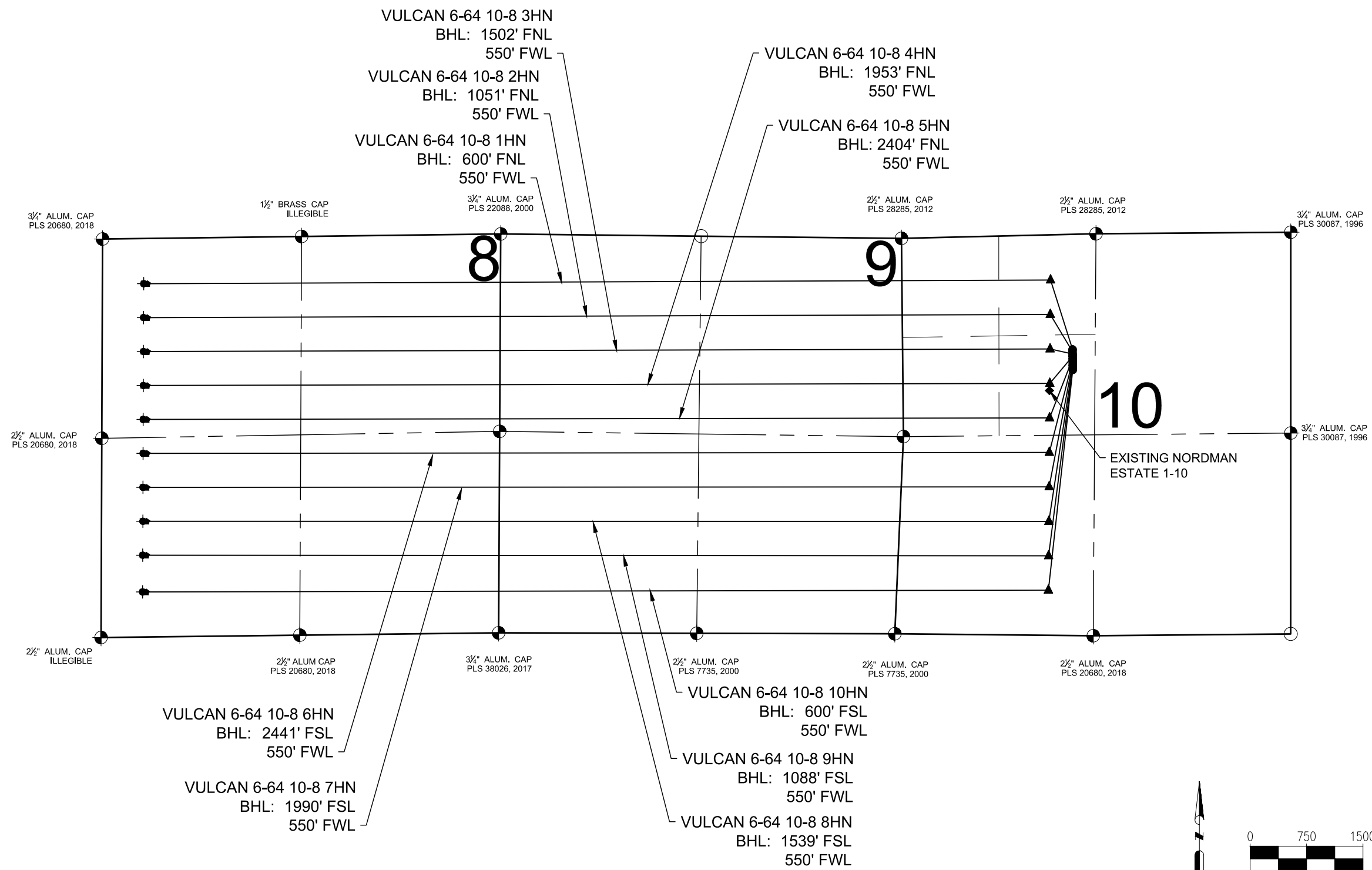


VULCAN 6-64 10-8 PAD
MULTI-WELL PLAN



- NOTES:
1. THIS FIELD SURVEY CONFORMS TO THE MINIMUM STANDARDS SET BY THE COGCC, RULE NO. 215
 2. ALL DISTANCES AND BEARINGS SHOWN HEREON ARE GROUND VALUES AS GPS MEASURED IN THE FIELD, WITH TIES TO WELLS MEASURED PERPENDICULAR TO LINES SHOWN HEREON. ALL BEARINGS ARE GRID BEARINGS OF THE COLORADO STATE PLANE COORDINATE SYSTEM, CENTRAL ZONE, NORTH AMERICAN DATUM 1983/2011. THE LINEAL DIMENSIONS AS SHOWN HEREIN ARE GRID DISTANCES BASED UPON THE "U.S. SURVEY FOOT." TO GET GROUND DISTANCES MULTIPLY SHOWN DISTANCE BY 1.0003169.
 3. FIELD VERIFICATION OF MONUMENTS COMPLETED WITHIN 1 YEAR OF SIGNATURE DATE, UNLESS OTHERWISE NOTED.

- NOTES:
- VULCAN 6-64 10-8 1HN TO BE AT 1530' FNL & 2260' FWL.
BOTTOM HOLE AT 600' FNL & 550' FWL, SEC. 8.
- VULCAN 6-64 10-8 2HN TO BE AT 1560' FNL & 2260' FWL.
BOTTOM HOLE AT 1051' FNL & 550' FWL, SEC. 8.
- VULCAN 6-64 10-8 3HN TO BE AT 1590' FNL & 2260' FWL.
BOTTOM HOLE AT 1502' FNL & 550' FWL, SEC. 8.
- VULCAN 6-64 10-8 4HN TO BE AT 1620' FNL & 2260' FWL.
BOTTOM HOLE AT 1953' FNL & 550' FWL, SEC. 8.
- VULCAN 6-64 10-8 5HN TO BE AT 1650' FNL & 2260' FWL.
BOTTOM HOLE AT 2404' FNL & 550' FWL, SEC. 8.
- VULCAN 6-64 10-8 6HN TO BE AT 1680' FNL & 2260' FWL.
BOTTOM HOLE AT 2441' FSL & 550' FWL, SEC. 8.
- VULCAN 6-64 10-8 7HN TO BE AT 1710' FNL & 2260' FWL.
BOTTOM HOLE AT 1990' FSL & 550' FWL, SEC. 8.
- VULCAN 6-64 10-8 8HN TO BE AT 1740' FNL & 2260' FWL.
BOTTOM HOLE AT 1539' FSL & 550' FWL, SEC. 8.
- VULCAN 6-64 10-8 9HN TO BE AT 1770' FNL & 2260' FWL.
BOTTOM HOLE AT 1088' FSL & 550' FWL, SEC. 8.
- VULCAN 6-64 10-8 10HN TO BE AT 1800' FNL & 2260' FWL.
BOTTOM HOLE AT 600' FSL & 550' FWL, SEC. 8.

EXISTING NORDMAN ESTATE 1-10 IS AT 2069' FNL & 1947' FWL.

LEGEND

⊕ = EXISTING MONUMENT	◆ = EXISTING WELL
○ = CALCULATED POSITION	● = PROPOSED WELL
▲ = LANDING POINT	LP = LANDING POINT
◆ = LAST TAKE POINT	LTP = LAST TAKE POINT
⬮ = BOTTOM HOLE	BHL = BOTTOM HOLE



FIELD DATE: 09-28-18	
DRAWING DATE: 10-02-18	
BY: DNS	CHECKED: MMP

WELL NAME: VULCAN 6-64 10-8 PAD
SURFACE LOCATION: SE 1/4 NW 1/4 SEC. 10, T6S, R64W, 6TH P.M. ELBERT COUNTY, COLORADO

PREPARED FOR:

GMT
Exploration Company LLC