



410 17th Street, Suite 1400
Denver, CO 80202
(720) 440-6100 phone
(720) 305-0804 fax

Bonanzacrk.com

January 29, 2018

State of Colorado
Oil and Gas Conservation Commission
1120 Lincoln Street, Suite 801
Denver, CO 80203

RE: Proposed Wellbore Spacing Unit
STATE PRONGHORN T44-P41-16HNB
Niobrara New Drill
SWSE Section 16, Township 5N, Range 61W, 6th PM
Weld County, Colorado

Dear Director Robbins,

Bonanza Creek Energy Operating Company, LLC. ("Bonanza Creek") is planning to drill the above captioned well in accordance with the provisions of Colorado Oil and Gas Conservation Commission (COGCC) Rule 318A.e.

Bonanza Creek's proposed wellbore spacing unit consists of:

Township 5N, Range 61W (Weld County):
5N-61W-16: E2
5N-61W-9: S2SE

Total acres: 400

Bonanza Creek is the only working interest owner within the proposed wellbore spacing unit, therefore Bonanza Creek hereby attests that no notice letters are required under COGCC Rule 318Ae.(5). The exhibit illustrating the proposed wellbore spacing unit is provided to assist you in your review and approval of Bonanza Creek's proposed APD for the above mentioned well.

Thank you for your attention to the enclosed. Bonanza Creek respectfully requests that the COGCC review the enclosed information and approve the Application for Permit to Drill the captioned well.

Regards,
Bonanza Creek Energy Operating Company, LLC.

Brian Dodek, P.G.
Manager – Environmental & Regulatory Compliance

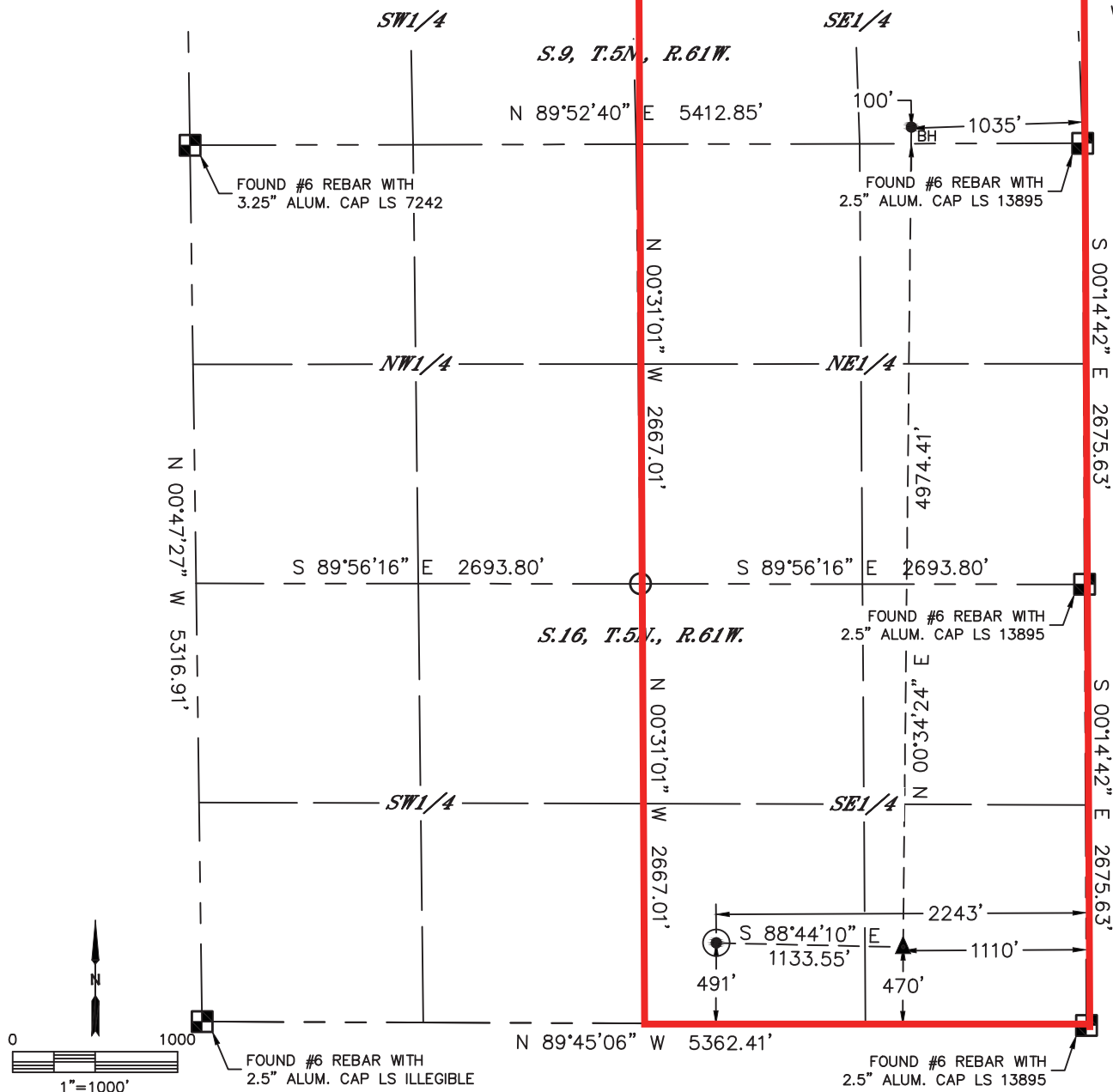


Lat40°, Inc. 6250 W. 10th Street, Unit 2, Greeley, CO 970-515-5294

WELL LOCATION CERTIFICATE

STATE PRONGHORN T44-P41-16HNB

SECTION: 16
TOWNSHIP: 5N
RANGE: 61W
6TH. P.M.
WELD COUNTY, CO



CLIENT: BONANZA CREEK				LANDMAN: JOSEPH SCHULTZ			
INSTRUMENT OPERATOR: CASEY KOHOUT				SURVEY DATE: 10/24/2018		SURFACE USE: PASTURE	
SHL FOOTAGE	SHL LAT°	SHL LONG°	SHL PDOP	SHL ELEV (FT.)	SHL 1/4/1/4	SHL S-T-R	
491	FSL	2243	FEL	40.39505	-104.21247	1.6	4643
							SWSE
							16-5-61

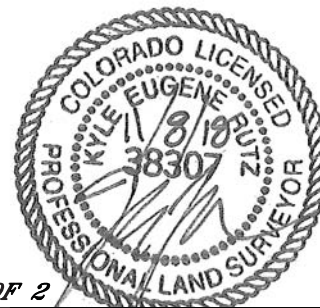
BHL FOOTAGE	BHL LAT°	BHL LONG°	BHL S-T-R	EP LAT°	EP LONG°	EP S-T-R
100	FSL	1035	FEL	40.40858	-104.20796	9-5-61
						40.39493
						-104.20840
						16-5-61

LEGEND

- = ALIQUOT MONUMENT AS DESCRIBED
- = CALCULATED POSITION
- = SURFACE HOLE LOCATION (SHL)
- ▲ = ENTRY POINT LOCATION (EP)
- ◆ = TOP OF PRODUCTION ZONE (TPZ)
- _{BH} = BOTTOM HOLE LOCATION (BHL)

NOTE:

- 1) Bearings shown are Grid Bearings of the Colorado State Plane Coordinate System, North Zone, North American Datum 1983. The lineal dimensions as contained herein are based upon the "U.S. Survey Foot."
- 2) Distances to section lines measured at 90 degrees from said section lines.
- 3) Ground elevations are based on an observed GPS elevation (NAVD 1988 DATUM).
- 4) Latitude and Longitude shown are (NAD 83 DATUM).
- 5) IMPROVEMENTS: See LOCATION DRAWING for all visible improvements within 500' of oil and gas location.
- 6) This map does not represent a boundary survey.



SHEET 1 OF 2

Kyle E. Rutz—On behalf of Lat40°, Inc.
Colorado Licensed Professional Land Surveyor No. 38307
DATE: 11/8/2018
PROJECT#: 2018178