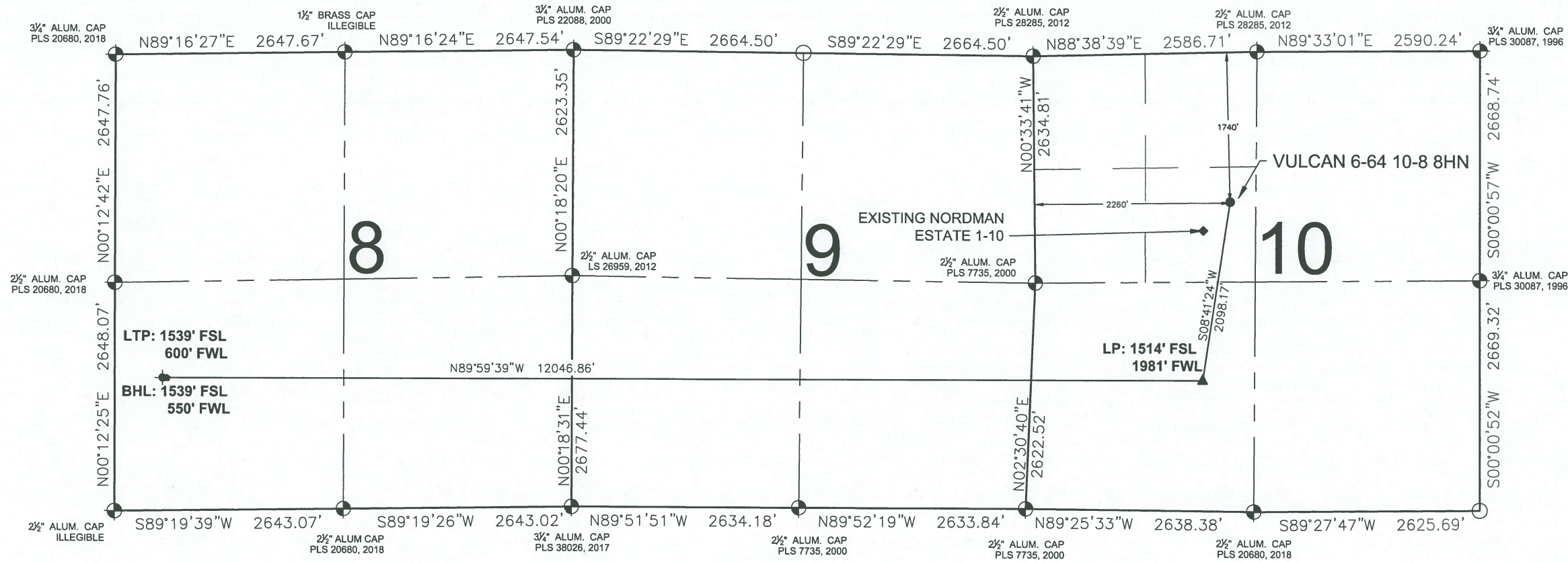


VULCAN 6-64 10-8 8HN WELL LOCATION EXHIBIT



- NOTES:**
- THIS FIELD SURVEY CONFORMS TO THE MINIMUM STANDARDS SET BY THE COGCC, RULE NO. 215
 - ALL DISTANCES AND BEARINGS SHOWN HEREON ARE GROUND VALUES AS GPS MEASURED IN THE FIELD, WITH TIES TO WELLS MEASURED PERPENDICULAR TO LINES SHOWN HEREON. ALL BEARINGS ARE GRID BEARINGS OF THE COLORADO STATE PLANE COORDINATE SYSTEM, CENTRAL ZONE, NORTH AMERICAN DATUM 1983/2011. THE LINEAL DIMENSIONS AS SHOWN HEREIN ARE GRID DISTANCES BASED UPON THE "U.S. SURVEY FOOT." TO GET GROUND DISTANCES MULTIPLY SHOWN DISTANCE BY 1.0003169.
 - FIELD VERIFICATION OF MONUMENTS COMPLETED WITHIN 1 YEAR OF SIGNATURE DATE, UNLESS OTHERWISE NOTED.

LEGEND

⊕ = EXISTING MONUMENT	◆ = EXISTING WELL
○ = CALCULATED POSITION	● = PROPOSED WELL
▲ = LANDING POINT	LP = LANDING POINT
◆ = LAST TAKE POINT	LTP = LAST TAKE POINT
⬇ = BOTTOM HOLE	BHL = BOTTOM HOLE

I, ROBERT J. GUFFEY, A LICENSED PROFESSIONAL LAND SURVEYOR IN THE STATE OF COLORADO, DO HEREBY STATE TO **GMT EXPLORATION COMPANY LLC** THAT THE WELL LOCATION EXHIBIT SHOWN HEREON WAS PREPARED BY ME OR UNDER MY DIRECT SUPERVISION AND THE DRAWING SHOWN HEREON ACCURATELY DEPICTS THE PROPOSED LOCATION OF THE WELL. THIS EXHIBIT MEETS THE REQUIREMENTS OF A GIS LAND POSITION AS DEFINED BY SECTION 38-51-102 (7.5) C.R.S. AND AS SUCH PER SECTION 38-51-109.3 C.R.S. CANNOT BE RELIED UPON TO DETERMINE OWNERSHIP.

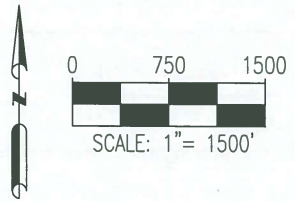


**WELL VULCAN 6-64 10-8 8HN TO BE
LOCATED 1740' FNL & 2260' FWL**

**WELL BORE COORDINATES
(NAD83)**

SURFACE LOCATION: GROUND ELEVATION=6073' LATITUDE:39.545236°N LONGITUDE:104.542233°W	LANDING POINT: LATITUDE:39.539551°N LONGITUDE:104.543435°W	LAST TAKE POINT: LATITUDE:39.539896°N LONGITUDE:104.585971°W	BOTTOM HOLE: LATITUDE:39.539895°N LONGITUDE:104.586148°W
--	---	---	---

WELL NOTES:
BH LOCATION PROVIDED BY CLIENT.
LAND SURFACE USE - RANGELAND
EXISTING NORDMAN ESTATE 1-10 IS 457' SW AT 2069' FNL & 1947' FWL.
SEE LOCATION DRAWING FOR ADDITIONAL IMPROVEMENTS WITHIN 500'
PDOP=2.2
GPS OPERATOR: RYAN DESMOND



ROBERT J. GUFFEY, PLS 20680
COLORADO LICENSED PROFESSIONAL LAND SURVEYOR
FOR AND ON BEHALF OF P.F.S., LLC
d.b.a. ASCENT GEOMATICS SOLUTIONS



7535 Hilltop Circle
Denver, CO 80221
(303) 928-7128
www.ascentgeomatics.com

FIELD DATE: 09-28-18	
DRAWING DATE: 10-02-18	
BY: DNS	CHECKED: MMP

WELL NAME: VULCAN 6-64 10-8 8HN
SURFACE LOCATION: SE 1/4 NW 1/4 SEC. 10, T6S, R64W, 6TH P.M. ELBERT COUNTY, COLORADO

PREPARED FOR: GMT Exploration Company LLC
