

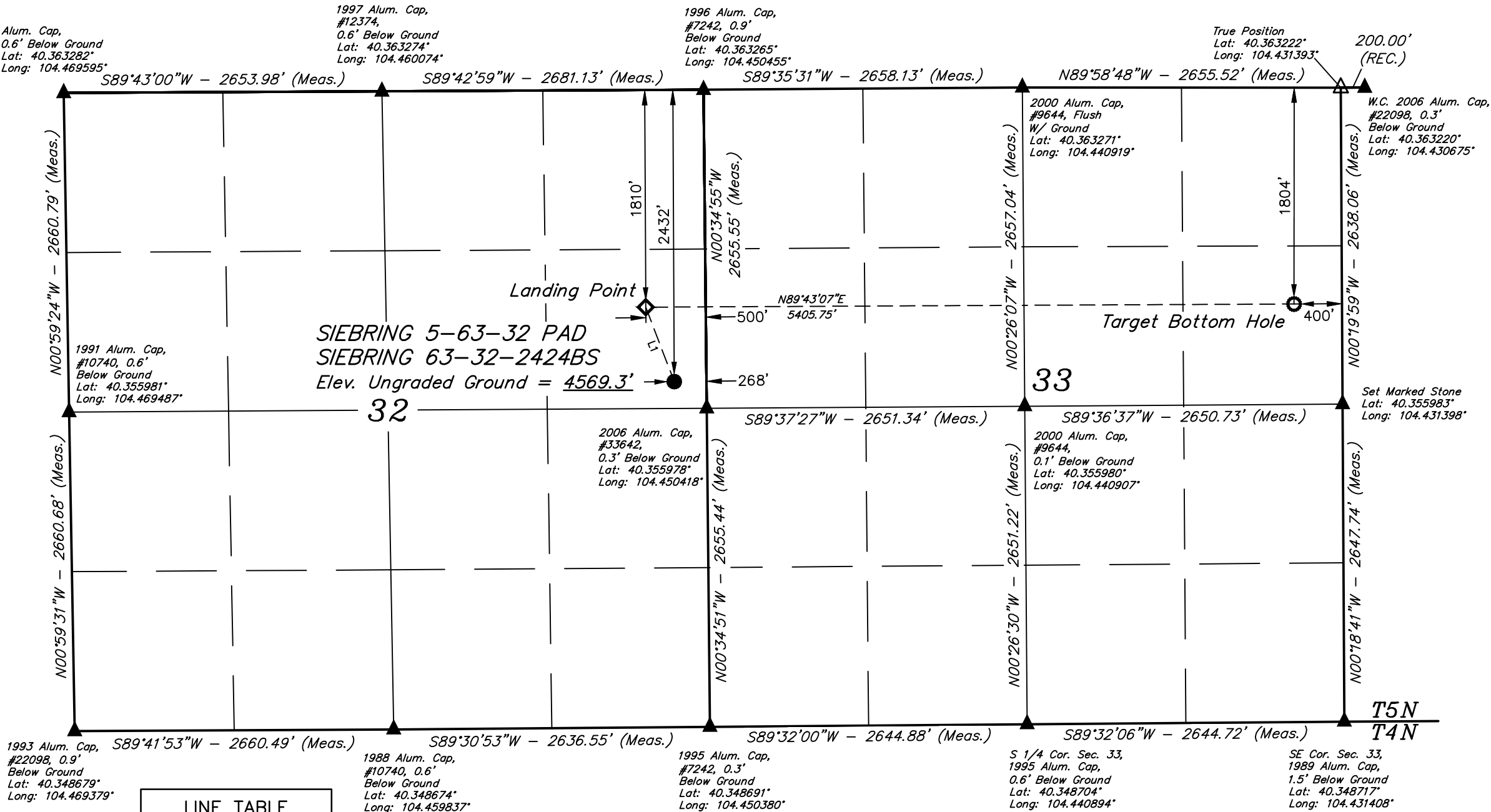
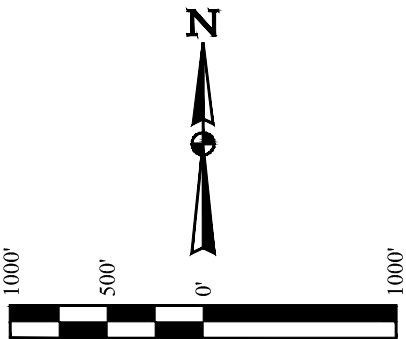
T5N, R63W, 6th P.M.

HIGHPOINT OPERATING CORPORATION

SIEBRING 5-63-32 PAD  
SIEBRING 63-32-2424BS  
SE 1/4 NE 1/4, SECTION 32, T5N, R63W, 6th P.M.  
WELD COUNTY, COLORADO

BASIS OF BEARINGS  
TRANSVERSE MERCATOR PROJECTION WITH  
A CENTRAL MERIDIAN OF W105°00'00".

BASIS OF ELEVATION  
OPUS SOLUTION GENERATED NAVD 88



1993 Alum. Cap, #22098, 0.9' Below Ground  
Lat: 40.348679° Long: 104.469379°

1988 Alum. Cap, #10740, 0.6' Below Ground  
Lat: 40.348674° Long: 104.459837°

1995 Alum. Cap, #7242, 0.3' Below Ground  
Lat: 40.348691° Long: 104.450380°

S 1/4 Cor. Sec. 33, 1995 Alum. Cap, 0.6' Below Ground  
Lat: 40.348704° Long: 104.440894°

SE Cor. Sec. 33, 1989 Alum. Cap, 1.5' Below Ground  
Lat: 40.348717° Long: 104.431408°

LINE TABLE		
LINE	DIRECTION	LENGTH
L1	N20°58'02"W	664.65'

- LEGEND:
- = PROPOSED WELLHEAD.
  - ◆ = LANDING POINT.
  - = TARGET BOTTOM HOLE.
  - ▲ = SECTION CORNERS LOCATED. (NAD 83)
  - △ = SECTION CORNERS RE-ESTABLISHED. (Not Set on Ground.) (NAD 83)

NOTE:  
DISTANCES REFERENCED ON PLAT TO  
SECTION LINES ARE PERPENDICULAR.

NAD 83 (SURFACE LOCATION)	NAD 83 (LANDING POINT)	NAD 83 (TARGET BOTTOM HOLE)
LATITUDE = 40°21'23.73" (40.356592°)	LATITUDE = 40°21'29.88" (40.358300°)	LATITUDE = 40°21'29.80" (40.358279°)
LONGITUDE = 104°27'04.98" (104.451384°)	LONGITUDE = 104°27'08.00" (104.452223°)	LONGITUDE = 104°25'58.19" (104.432831°)
NAD 27 (SURFACE LOCATION)	NAD 27 (LANDING POINT)	NAD 27 (TARGET BOTTOM HOLE)
LATITUDE = 40°21'23.80" (40.356611°)	LATITUDE = 40°21'29.95" (40.358319°)	LATITUDE = 40°21'29.87" (40.358298°)
LONGITUDE = 104°27'03.14" (104.450873°)	LONGITUDE = 104°27'06.16" (104.451712°)	LONGITUDE = 104°25'56.36" (104.432321°)
STATE PLANE NAD 83 (CO. NORTH)	STATE PLANE NAD 83 (CO. NORTH)	STATE PLANE NAD 83 (CO. NORTH)
N: 1374475.11' E: 3292230.65'	N: 1375094.22' E: 3291989.40'	N: 1375151.15' E: 3297393.23'
STATE PLANE NAD 27 (CO. NORTH)	STATE PLANE NAD 27 (CO. NORTH)	STATE PLANE NAD 27 (CO. NORTH)
N: 374477.01' E: 2292380.64'	N: 375096.11' E: 2292139.39'	N: 375153.06' E: 2297543.23'

PDOP = 1.4

REV: 1 03-20-19 J.U. (UPDATE PAD NAME)



UELS, LLC  
Corporate Office \* 85 South 200 East  
Vernal, UT 84078 \* (435) 789-1017

SURVEYED BY	RYAN WILLIAMS, D.E.	02-26-19	SCALE
DRAWN BY	J.U.	03-01-19	1" = 1000'

WELL LOCATION PLAT