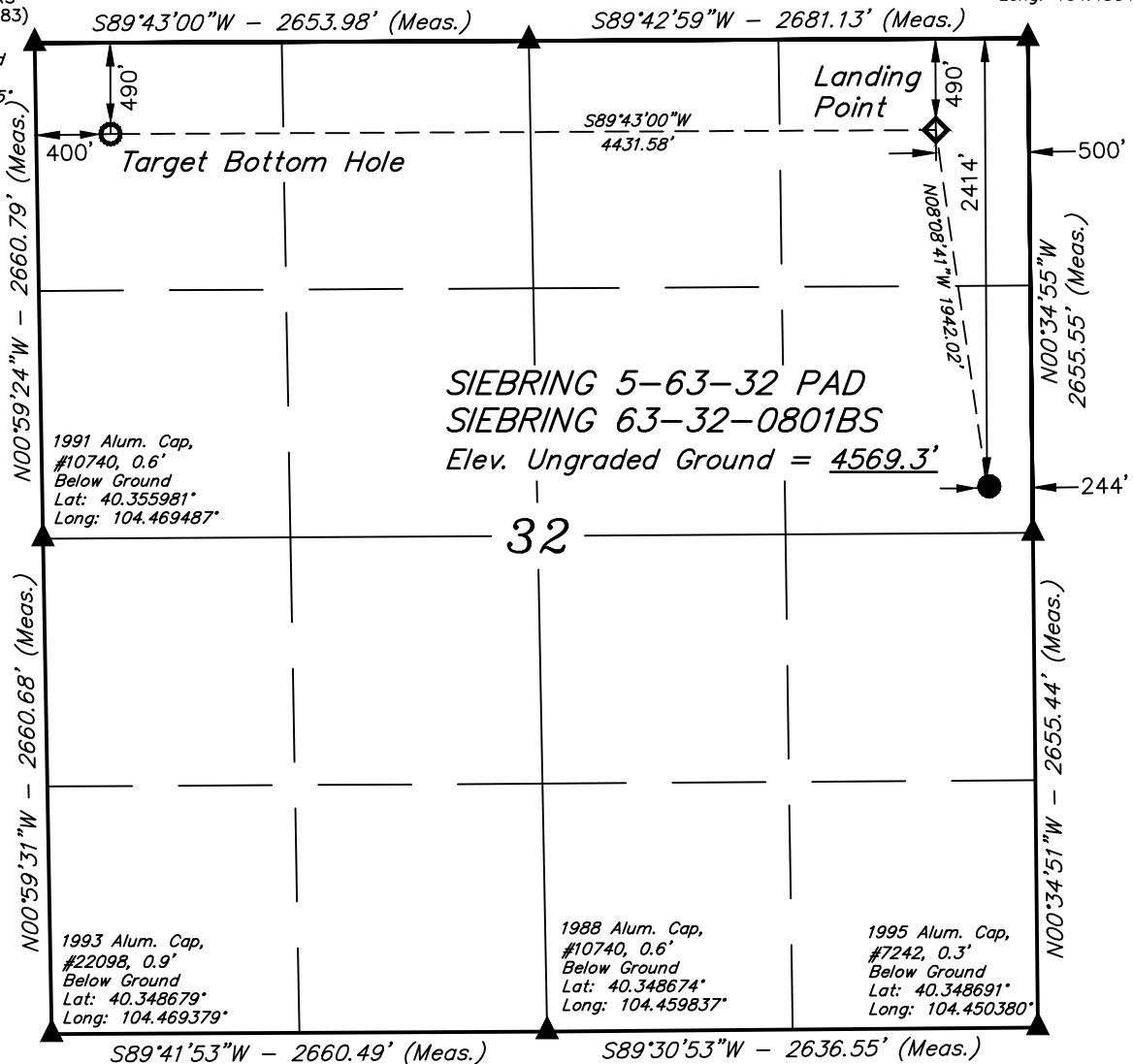


LEGEND:

T5N, R63W, 6th P.M.

- = 90° SYMBOL
- = PROPOSED WELLHEAD.
- ◆ = LANDING POINT.
- = TARGET BOTTOM HOLE.
- ▲ = SECTION CORNERS LOCATED. (NAD 83)

1996 Alum. Cap,
#7242, 0.9'
Below Ground
Lat: 40.363265°
Long: 104.450455°



NOTE:
DISTANCES REFERENCED ON PLAT TO
SECTION LINES ARE PERPENDICULAR.

PDOP = 1.4



CERTIFICATE

THIS IS TO CERTIFY THAT THE ABOVE PLAT WAS PREPARED FROM FIELD NOTES OF ACTUAL SURVEYS MADE BY ME OR UNDER MY SUPERVISION AND THAT THE SAME ARE TRUE AND CORRECT TO THE BEST OF MY KNOWLEDGE AND BELIEF.



NAD 83 (SURFACE LOCATION)	NAD 83 (LANDING POINT)	NAD 83 (TARGET BOTTOM HOLE)
LATITUDE = 40°21'23.91" (40.356642°)	LATITUDE = 40°21'42.92" (40.361922°)	LATITUDE = 40°21'42.97" (40.361936°)
LONGITUDE = 104°27'04.67" (104.451298°)	LONGITUDE = 104°27'08.07" (104.452242°)	LONGITUDE = 104°28'05.30" (104.468140°)
NAD 27 (SURFACE LOCATION)	NAD 27 (LANDING POINT)	NAD 27 (TARGET BOTTOM HOLE)
LATITUDE = 40°21'23.98" (40.356661°)	LATITUDE = 40°21'42.99" (40.361941°)	LATITUDE = 40°21'43.04" (40.361955°)
LONGITUDE = 104°27'02.83" (104.450787°)	LONGITUDE = 104°27'06.23" (104.451731°)	LONGITUDE = 104°28'03.46" (104.467629°)
STATE PLANE NAD 83 (CO. NORTH)	STATE PLANE NAD 83 (CO. NORTH)	STATE PLANE NAD 83 (CO. NORTH)
N: 1374493.39' E: 3292254.43'	N: 1376413.68' E: 3291968.57'	N: 1376366.84' E: 3287538.55'
STATE PLANE NAD 27 (CO. NORTH)	STATE PLANE NAD 27 (CO. NORTH)	STATE PLANE NAD 27 (CO. NORTH)
N: 374495.30' E: 2292404.42'	N: 376415.55' E: 2292118.54'	N: 376368.71' E: 2287688.52'

REV: 1 03-20-19 J.U.
(UPDATE PAD NAME)

BASIS OF BEARINGS

TRANSVERSE MERCATOR PROJECTION WITH
A CENTRAL MERIDIAN OF W105°00'00".

BASIS OF ELEVATION

OPUS SOLUTION GENERATED NAVD 88

UELS, LLC

Corporate Office * 85 South 200 East
Vernal, UT 84078 * (435) 789-1017



HIGHPOINT OPERATING CORPORATION

SIEBRING 5-32-32 PAD
SIEBRING 63-32-0801BS
SE 1/4 NE 1/4, SECTION 32, T5N, R63W, 6th P.M.
WELD COUNTY, COLORADO

SURVEYED BY	RYAN WILLIAMS, D.E.	02-26-19	SCALE
DRAWN BY	J.U.	03-01-19	1" = 1000'

WELL LOCATION PLAT

