



June 18, 2019

Mr. Jeff Robbins, Director  
Colorado Oil and Gas Conservation Commission  
The Chancery Building  
1120 Lincoln Street, Suite 801  
Denver, CO 80203

RE: Siebring 63-32-0801BN  
Township 5 North, Range 63 West, 6" P.M.  
Section 32: N/2 N/2  
Section 29: S/2 S/2  
Weld County, Colorado

Proposed Wellbore Unit (Containing 320 Acres, more or less):

Dear Mr. Jeff Robbins:

HighPoint is planning to drill the captioned boundary well in accordance with the provisions of COGCC 318A.e.

HighPoint's wellbore spacing unit consists of Section 32: N/2 N/2, Section 29: S/2 S/2, creating the above referenced spacing unit in which we will target the Niobrara formation. I certify that all of the owners within the proposed wellbore spacing unit were noticed and no objections were received.

Enclosed is a copy of the following document to assist you in your review and approval of HighPoint's proposed changes for the captioned well.

- Plat illustrating the proposed wellbore spacing unit on existing location plat

Thank you for your attention to the enclosed. HighPoint's respectfully requests that the COGCC review the enclosed information and approve the proposed changes for the captioned well.

If you have any questions, please contact me at 303-312-8145.

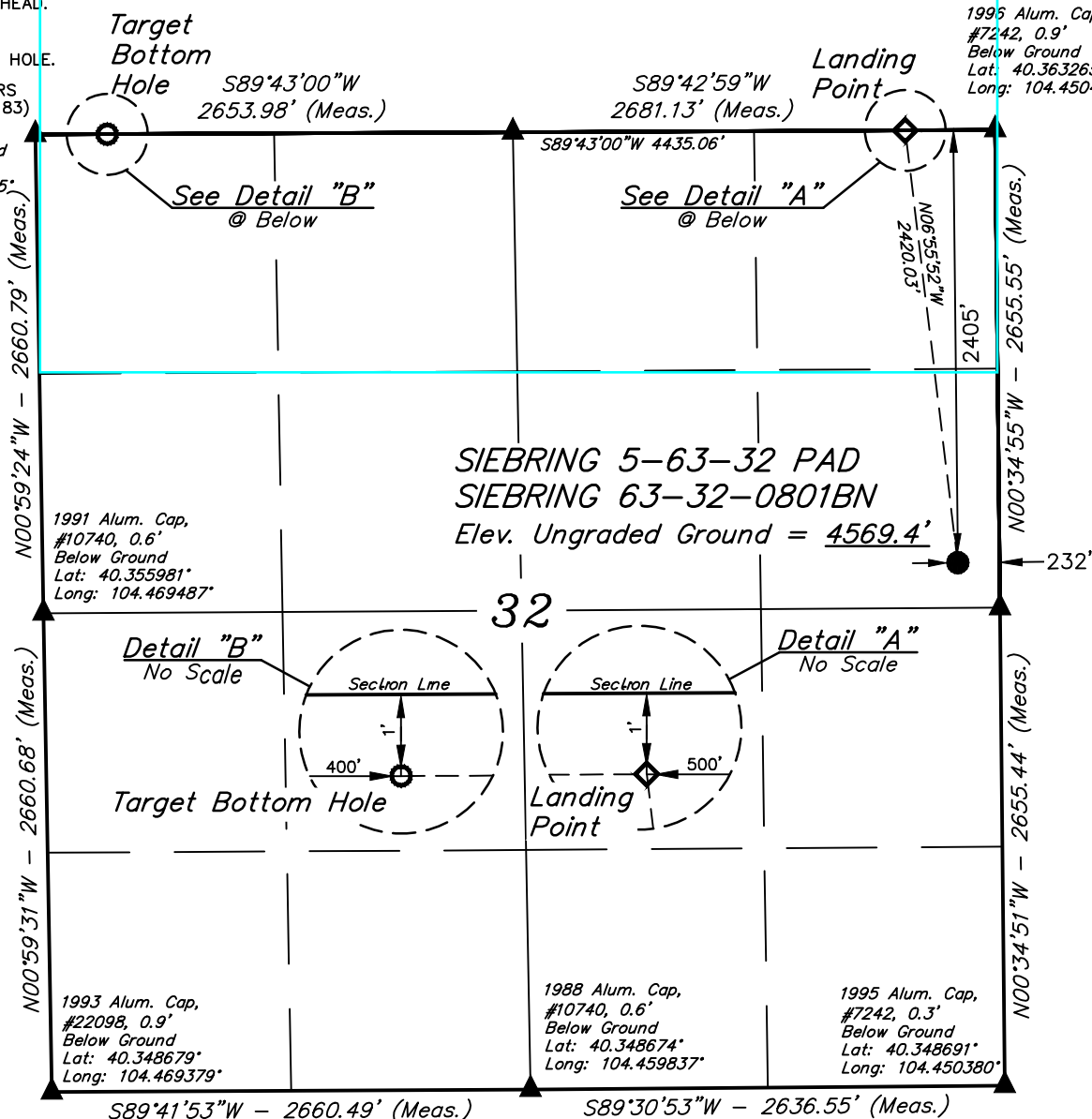
HIGHPOINT OPERATING CORPORATION

A handwritten signature in blue ink that reads "Delores Montoya".

Delores Montoya  
Sr. Regulatory Analyst

*T5N, R63W, 6th P.M.*

- 1996 Alum. Cap,  
#7242, 0.9'  
Below Ground  
Lat: 40.363265°  
Long: 104.450455°



CERTIFICATE

THIS IS TO CERTIFY THAT THE ABOVE MAP WAS PREPARED FROM FIELD NOTES OF ACTUAL SURVEYS MADE BY ME OR UNDER MY SUPERVISION AND THAT THE SAME ARE TRUE AND CORRECT TO THE BEST OF MY KNOWLEDGE AND BELIEF.

<b>NAD 83 (SURFACE LOCATION)</b>	<b>NAD 83 (LANDING POINT)</b>	<b>NAD 83 (TARGET BOTTOM HOLE)</b>
LATITUDE = 40°21'24.00" (40.356667°)	LATITUDE = 40°21'47.75" (40.363264°)	LATITUDE = 40°21'47.80" (40.363278°)
LONGITUDE = 104°27'04.52" (104.451255°)	LONGITUDE = 104°27'08.10" (104.452249°)	LONGITUDE = 104°28'05.38" (104.468160°)
<b>NAD 27 (SURFACE LOCATION)</b>	<b>NAD 27 (LANDING POINT)</b>	<b>NAD 27 (TARGET BOTTOM HOLE)</b>
LATITUDE = 40°21'24.07" (40.356685°)	LATITUDE = 40°21'47.82" (40.363283°)	LATITUDE = 40°21'47.87" (40.363297°)
LONGITUDE = 104°27'02.68" (104.450744°)	LONGITUDE = 104°27'06.26" (104.451738°)	LONGITUDE = 104°28'03.54" (104.467649°)
<b>STATE PLANE NAD 83 (CO. NORTH)</b>	<b>STATE PLANE NAD 83 (CO. NORTH)</b>	<b>STATE PLANE NAD 83 (CO. NORTH)</b>
N: 1374502.53' E: 3292266.31'	N: 1376902.48' E: 3291960.86'	N: 1376855.61' E: 3287527.36'
<b>STATE PLANE NAD 27 (CO. NORTH)</b>	<b>STATE PLANE NAD 27 (CO. NORTH)</b>	<b>STATE PLANE NAD 27 (CO. NORTH)</b>
N: 374504.44' E: 2292416.31'	N: 376904.34' E: 2292110.82'	N: 376857.46' E: 2287677.31'

REGISTERED LAND SURVEYOR  
REGISTRATION NO. 28285  
STATE OF COLORADO  
03-20-19

REV: 1 03-20-19 J.U.  
(UPDATE PAD NAME)

OPUS SOLUTION GENERATED NAVD 88



## HIGHPOINT OPERATING CORPORATION

SE 1/4 NE 1/4, SECTION 32, T5N, R63W, 6th P.M.  
WELD COUNTY, COLORADO

<b>SURVEYED BY</b>	RYAN WILLIAMS, D.E.	02-26-19	<b>SCALE</b>
<b>DRAWN BY</b>	J.U.	03-01-19	1" = 1000'

## WELL LOCATION PLAT



**UELS, LLC**  
Corporate Office \* 85 South 200 East  
Vernal, UT 84078 \* (435) 789-1017