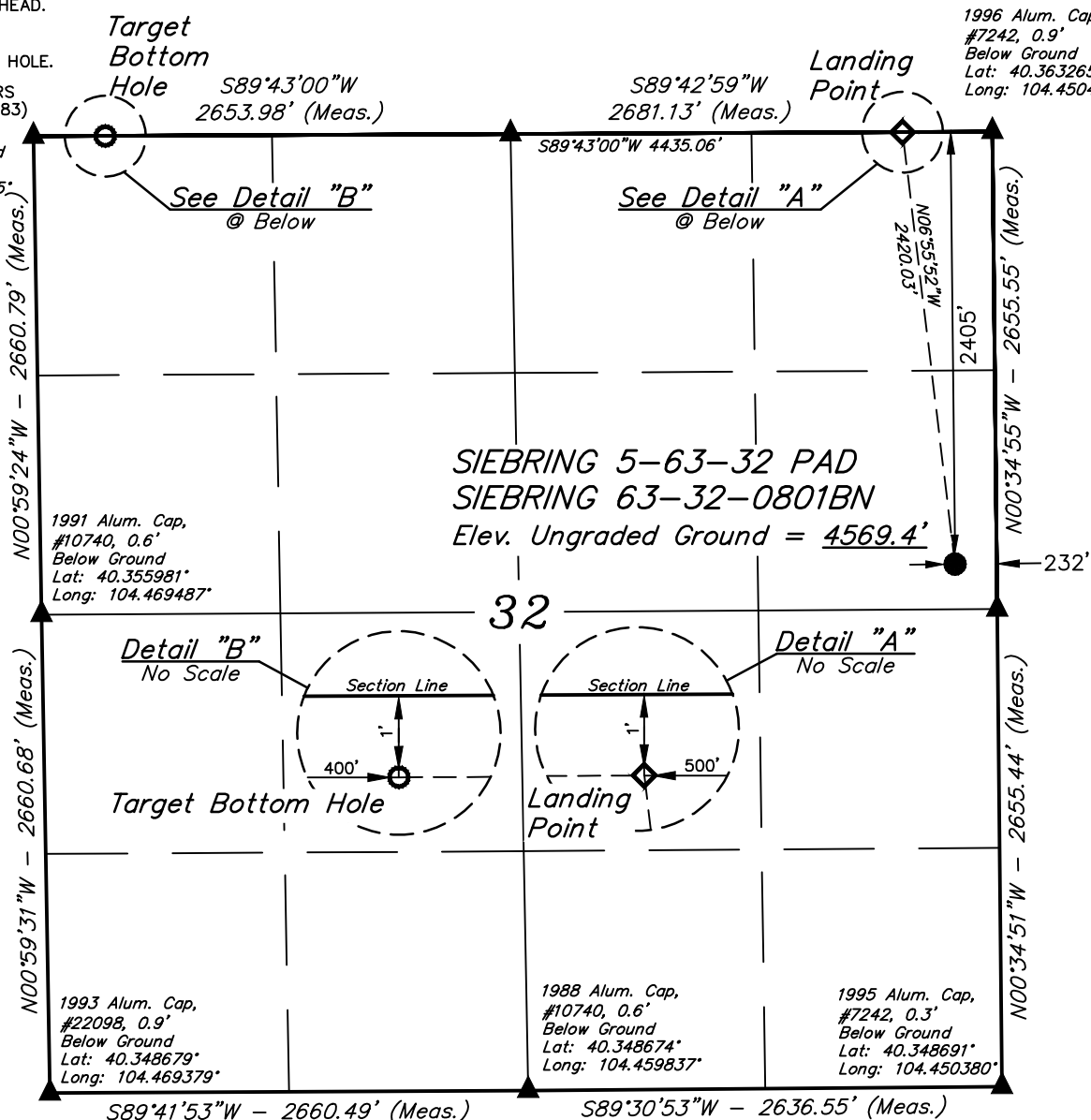


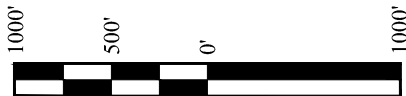
LEGEND:

- = 90° SYMBOL
- = PROPOSED WELLHEAD.
- ◆ = LANDING POINT.
- = TARGET BOTTOM HOLE.
- ▲ = SECTION CORNERS LOCATED. (NAD 83)

T5N, R63W, 6th P.M.



PDOP = 1.6



| NAD 83 (SURFACE LOCATION) | NAD 83 (LANDING POINT) | NAD 83 (TARGET BOTTOM HOLE) |
|---|---|---|
| LATITUDE = 40°21'24.00" (40.356667°) | LATITUDE = 40°21'47.75" (40.363264°) | LATITUDE = 40°21'47.80" (40.363278°) |
| LONGITUDE = 104°27'04.52" (104.451255°) | LONGITUDE = 104°27'08.10" (104.452249°) | LONGITUDE = 104°28'05.38" (104.468160°) |
| NAD 27 (SURFACE LOCATION) | NAD 27 (LANDING POINT) | NAD 27 (TARGET BOTTOM HOLE) |
| LATITUDE = 40°21'24.07" (40.356685°) | LATITUDE = 40°21'47.82" (40.363283°) | LATITUDE = 40°21'47.87" (40.363297°) |
| LONGITUDE = 104°27'02.68" (104.450744°) | LONGITUDE = 104°27'06.26" (104.451738°) | LONGITUDE = 104°28'03.54" (104.467649°) |
| STATE PLANE NAD 83 (CO. NORTH) | STATE PLANE NAD 83 (CO. NORTH) | STATE PLANE NAD 83 (CO. NORTH) |
| N: 1374502.53' E: 3292266.31' | N: 1376902.48' E: 3291960.86' | N: 1376855.61' E: 3287527.36' |
| STATE PLANE NAD 27 (CO. NORTH) | STATE PLANE NAD 27 (CO. NORTH) | STATE PLANE NAD 27 (CO. NORTH) |
| N: 374504.44' E: 2292416.31' | N: 376904.34' E: 2292110.82' | N: 376857.46' E: 2287677.31' |

BASIS OF BEARINGS

TRANSVERSE MERCATOR PROJECTION WITH
A CENTRAL MERIDIAN OF W105°00'00".

BASIS OF ELEVATION

OPUS SOLUTION GENERATED NAVD 88

UELS, LLC

Corporate Office * 85 South 200 East
Vernal, UT 84078 * (435) 789-1017



HIGHPOINT OPERATING CORPORATION

SIEBRING 5-63-32 PAD
SIEBRING 63-32-0801BN
SE 1/4 NE 1/4, SECTION 32, T5N, R63W, 6th P.M.
WELD COUNTY, COLORADO

| | | | |
|-------------|---------------------|----------|------------|
| SURVEYED BY | RYAN WILLIAMS, D.E. | 02-26-19 | SCALE |
| DRAWN BY | J.U. | 03-01-19 | 1" = 1000' |

WELL LOCATION PLAT

