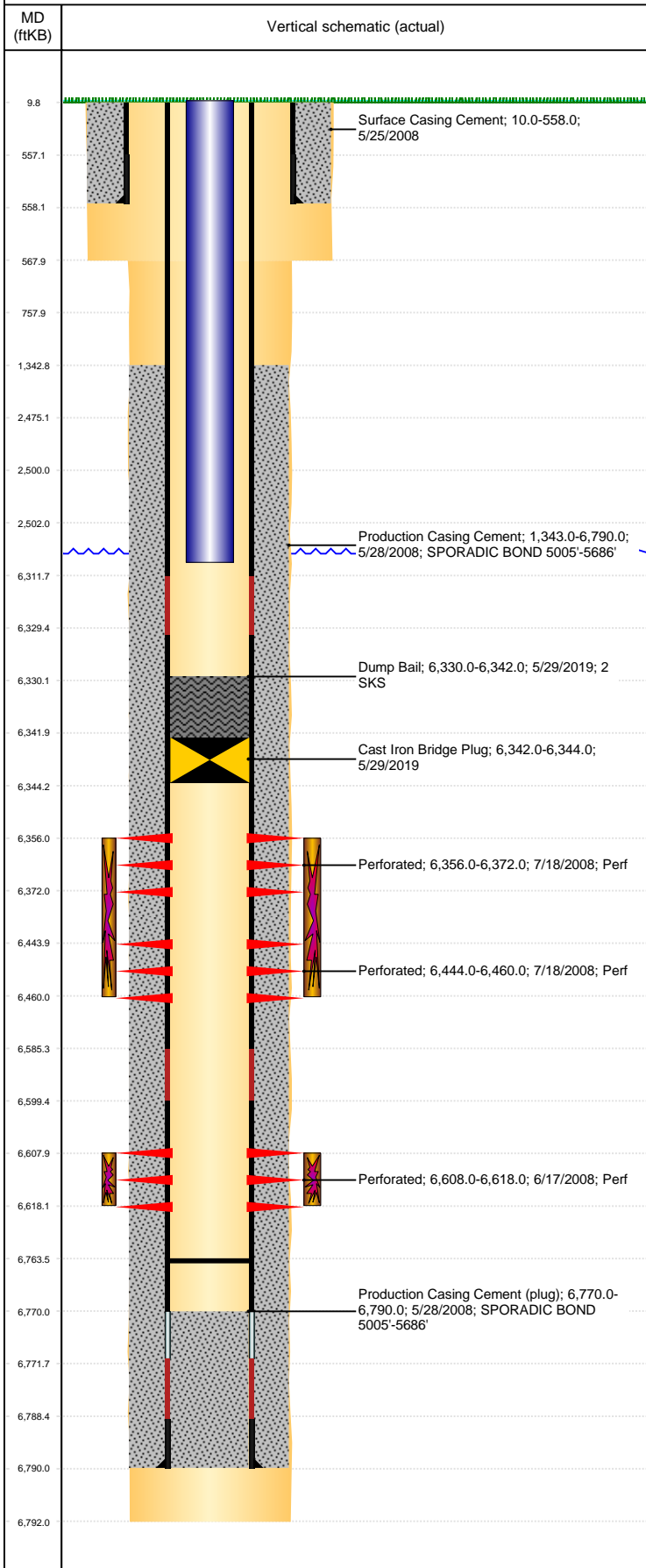


Well Name: WELLS RANCH USX AE31-04

VERTICAL, ORIGINAL HOLE, 8/6/2019 11:18:38 AM



Well Header									
API 05-123-25766		Business Unit DJ BASIN			District 15		Well Config VERTICAL		
KB - GL / MSL (ft... 10.00		Spud Date 5/24/2008		P & A Date		Well Production Status TA			SoRT Yes
Comment									
Surface Location (Congressional)									
Qtr 3 NW	Qtr 4 NW	Section 31	Twnshp 6	Twnsh... N	Range 62	Rng E/... W	Actual Latitude (°) 40.44821179	Actual Longitude (°) -104.37335860	
Wellbore Sections									
Section Des			Size (in)			Act Top, MD (ftKB)		Act Btm, MD (ftKB)	
SURFACE			12 1/4			10		568	
PRODUCTION			7 7/8			568		6,792	
Casing Strings									
Csg Des		Run Date		OD (in)	Wt/Len (lb/ft)	Grade	Top, MD (ftKB)	MD (ftKB)	
Surface		5/25/2008		8 5/8	24.00	J-55	10.0	558.0	
Production		5/28/2008		4 1/2	11.60	M-80	10.0	6,790.0	
Cement									
Des				Start Date		Top (ftKB)		Btm (ftKB)	
Surface Casing Cement				5/25/2008		10.0		558.0	
Production Casing Cement				5/28/2008		1,343.0		6,790.0	
Dump Bail				5/29/2019		6,330.0		6,342.0	
Zone Statuses									
Zone Name	Status Date	Status	Fluid Type	Job				Prod Method	
CODELL	7/21/2008	PR		DRILLING/COMPLETION - ORIGINAL, 5/24/2008...					
CODELL	5/29/2019	TA		PLUG AND ABANDON, 5/28/2019 10:00					
NIOBRARA	7/21/2008	PR		DRILLING/COMPLETION - ORIGINAL, 5/24/2008...					
NIOBRARA	5/29/2019	TA		PLUG AND ABANDON, 5/28/2019 10:00					
Perforation Data									
Linked Zone		Bnch/Stg	Entered Shot Total	Top (ftKB)		Btm (ftKB)		Date	
NIOBRARA, ORIGINAL HOLE		A	64	6,356.00		6,372.00		7/18/2008	
NIOBRARA, ORIGINAL HOLE		B	64	6,444.00		6,460.00		7/18/2008	
CODELL, ORIGINAL HOLE			40	6,608.00		6,618.00		6/17/2008	
Stimulation Intervals									
Zone			Start Date		Top (ftKB)		Btm (ftKB)		
NIOBRARA, ORIGINAL HOLE			7/18/2008		6,356.0		6,460.0		
CODELL, ORIGINAL HOLE			7/18/2008		6,608.0		6,618.0		
Other In Hole									
Run Date		Des			OD (in)	Top (ftKB)	Btm (ftKB)		
5/29/2019		Cast Iron Bridge Plug			4	6,342.0	6,344.0		
Logs									
Date		Type				Top, MD (ftKB)		Btm, MD (ftKB)	
5/27/2008		Caliper/Comp. Density/Neutron/GR/SP/ML				2,540.0		6,770.0	
5/27/2008		DIL/GR/SP/Caliper				558.0		6,790.0	
6/13/2008		CBL/CCL/GR				1,198.0		6,751.0	
3/6/2014		GYRO				0.0		6,500.0	
Plug Back Total Depths									
Date		Type		Com				Depth (ftKB)	
8/22/2008		REMAINDER OF CIFT		139' OF RATHOLE.				6,757.0	
10/31/2011		FILL		145' RAT HOLE				6,763.6	