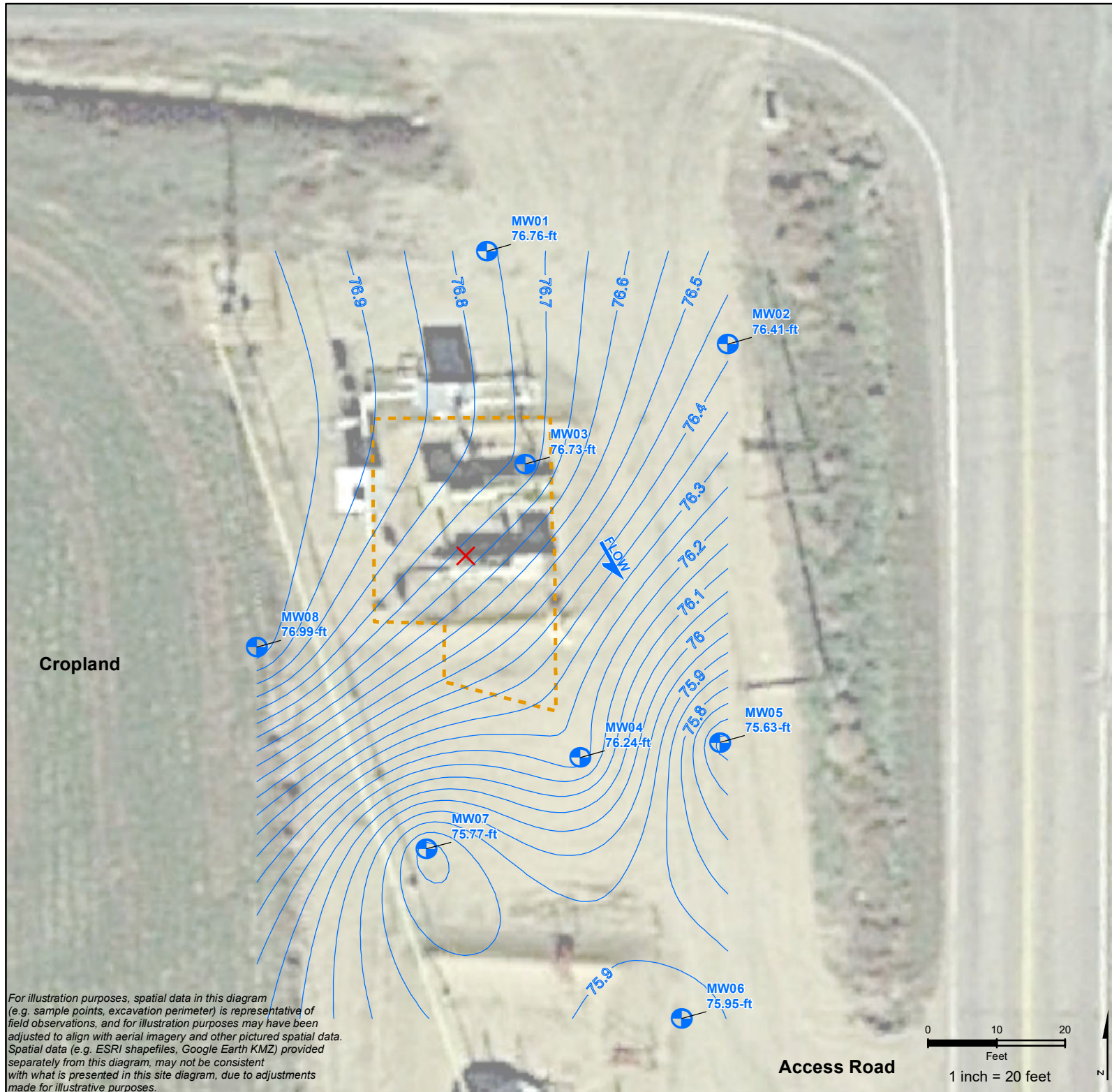




**Figure 1**  
**WCR Properties 41-5/Spaur 1-5**  
**Tank Battery -**  
**Groundwater Elevations**  
**April 9, 2019**



**Legend**

- MW01 77.76-ft  
Monitoring Well Locations & Relative GW Elevation
- X  
Approximate Release Location
- Final Excavation Extent (8/9/2018)
- FLOW  
Estimated Groundwater Flow Direction
- Estimated Groundwater Contour

**Site Location**

NENE Sec 5-T3N-R67W  
Weld County, Colorado

REVISED	BY	COMMENT
7/10/2019	BJB	Figure 1



Apex Companies, LLC  
beau.bergstrom@apexcos.com  
M:\Projects\Anadarko\DJL\_Basin\Remediation\WCR\_41-5\_TB\WCR\_41-5\_TB\_GW\_201902\_Fig4\_20190710.mxd