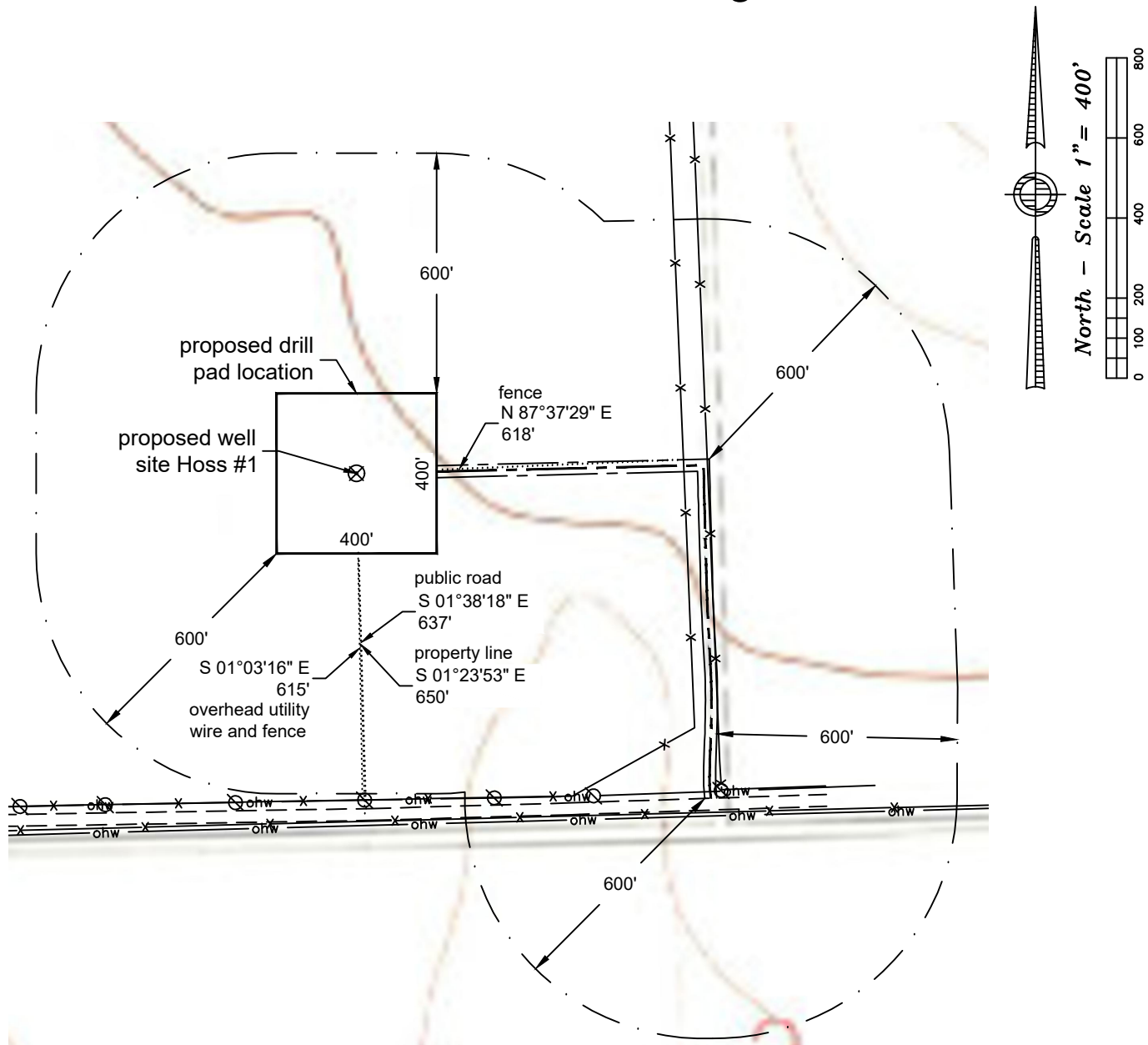


# Location Drawing



## Distance to nearest from Well:

Building:	5280'
Building Unit:	5280'
High Occupancy Building Unit:	5280'
Designated Outside Activity Area:	5280'
Public Road:	838'
Aboveground Utility:	815'
Railroad:	5280'
Property Line:	850'
School Facility:	5280'
School Property Line:	5280'
Child Care Center:	5280'

P:\Project\2019\19039\dwg\19039\_Jmp\_Well.dwg July 08, 2019 - 2:00pm

Well Name:	<b>Hoss #1</b>	Field Date <b>4.29.2019</b>	Prepared for:	Project#: <b>19039.001</b>
		Party Chief <b>ADS</b>	<b>St. Croix Operating, Inc.</b>	
Section 34-T3S-R51W-6th PM, SE-SE		Proj. Manager <b>MDG</b>		
Washington County, Colorado		Drawing Date <b>7.8.2019</b>		
			PLS Corporation 532 West 66th Street Loveland, Colorado 80538 970.669.2100 office - info@plscorporation.com	