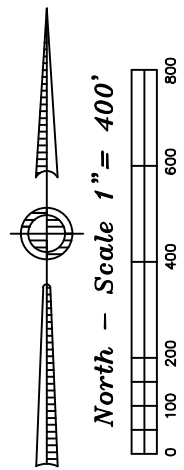
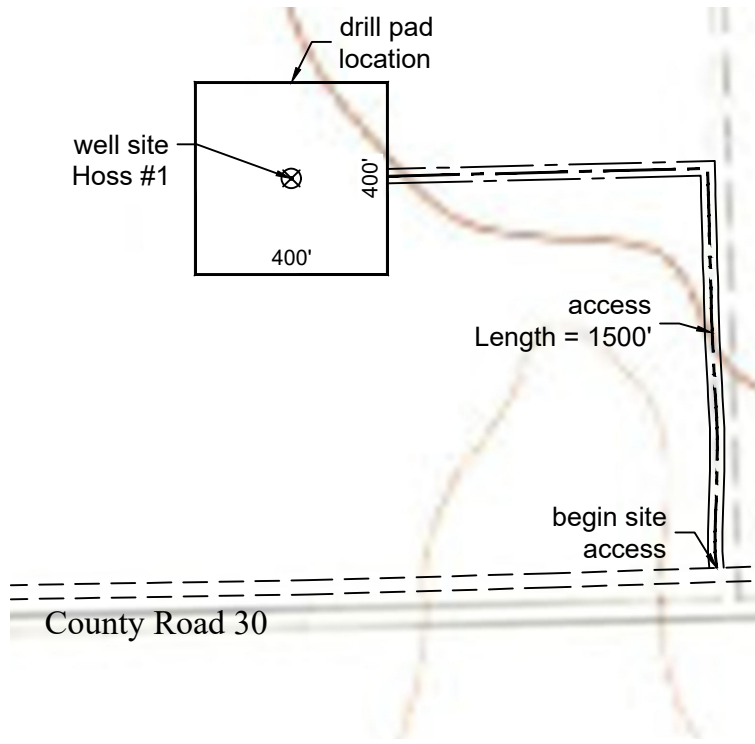


# Access Road Map



P:\Project\2019\19039\dwg\19039\_Acc\_Well.dwg July 08, 2019 - 2:03pm

Well Name: <b>Hoss #1</b>	Field Date <b>4.29.2019</b>	Prepared for:	Project#: <b>19039.001</b>
Section 34-T1N-R49W-6th PM, SE-SE	Party Chief <b>ADS</b>	<b>St. Croix Operating, Inc.</b>	
Washington County, Colorado	Proj. Manager <b>MDG</b>		
	Drawing Date <b>7.8.2019</b>	PLS Corporation 532 West 66th Street Loveland, Colorado 80538 970.669.2100 office - info@plscorporation.com	