



PROJECT DETAILS: Weld County, CO (NAD83)
Geodetic System: US State Plane 1983
Datum: North American Datum 1983
Ellipsoid: GRS 1980
Zone: Colorado Northern Zone
System Datum: Mean Sea Level
Local North: True

WELL DETAILS: Park 4-63-4 1609B

Ground Elevation:: 4560.00
RKB Elevation: KB=23 @ 4583.00usft (Savanna 803)
Rig Name: Savanna 803

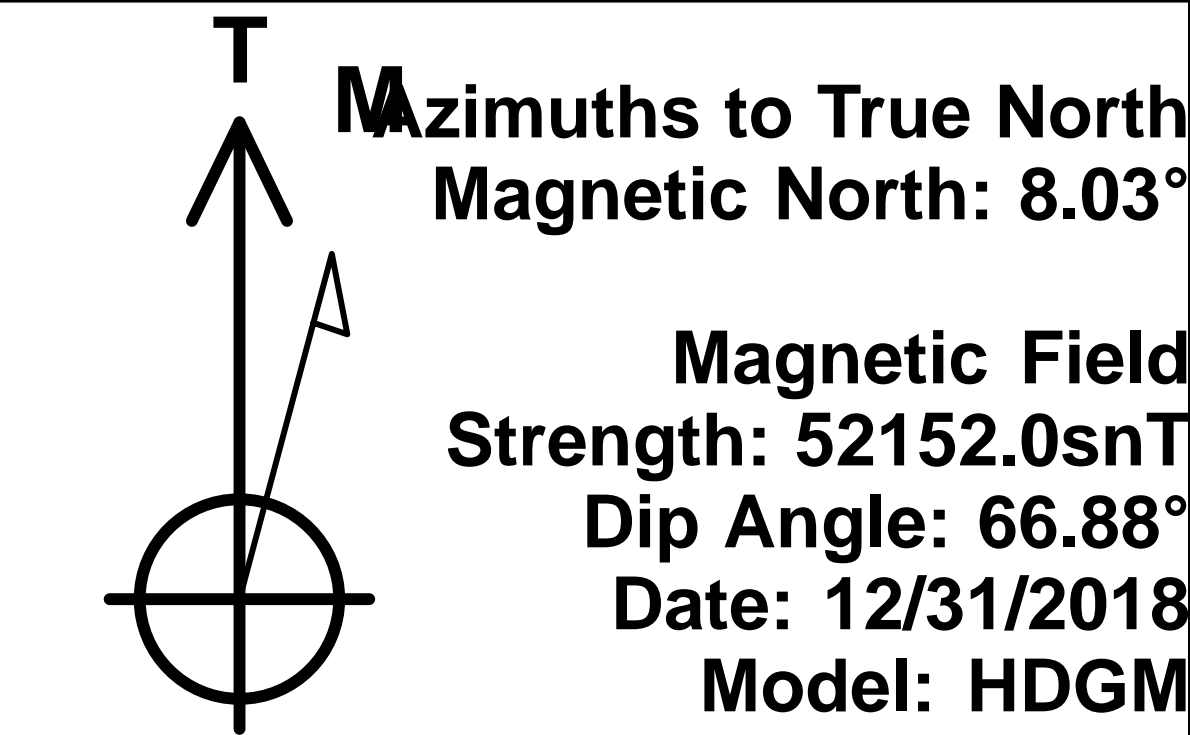
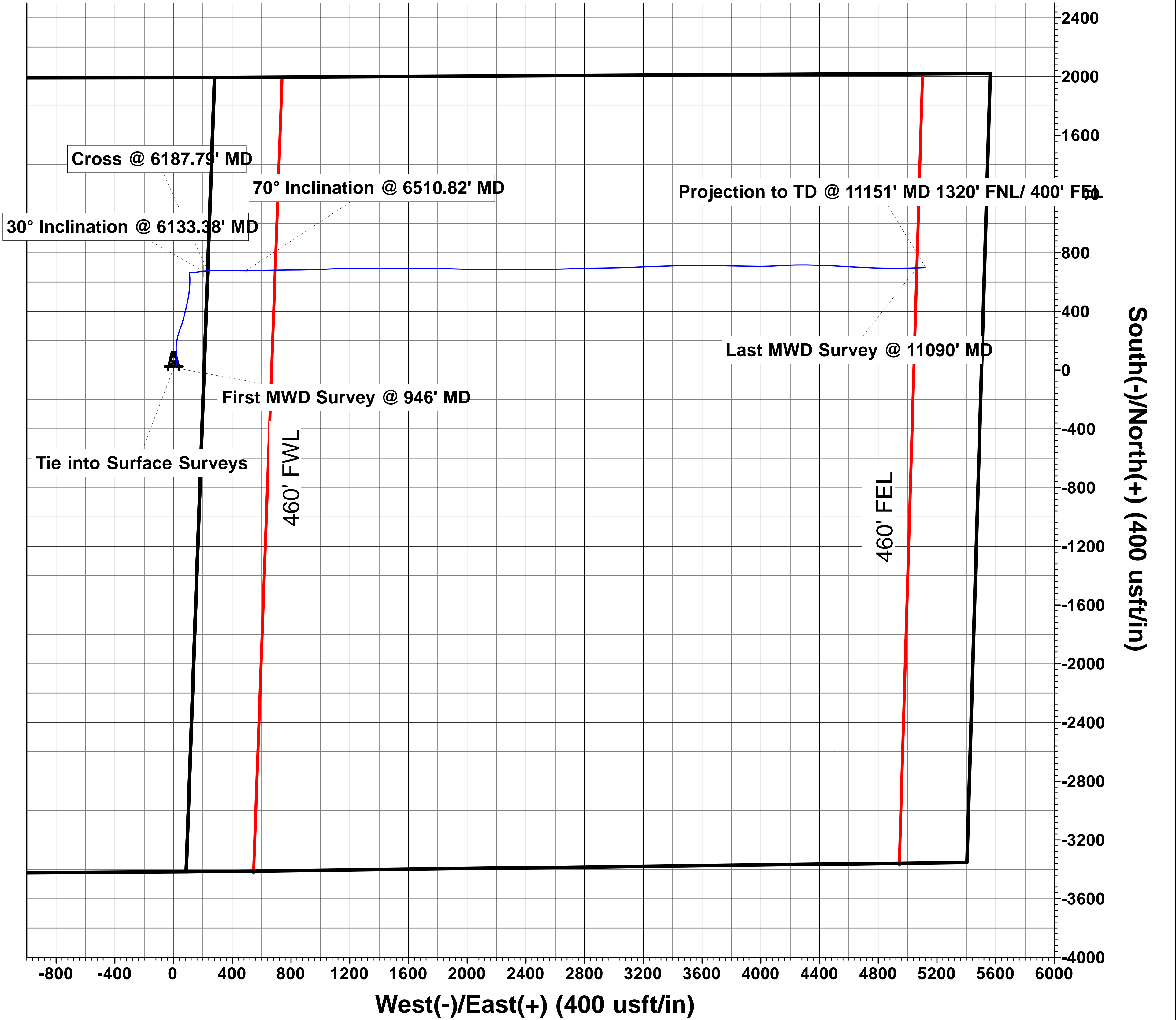
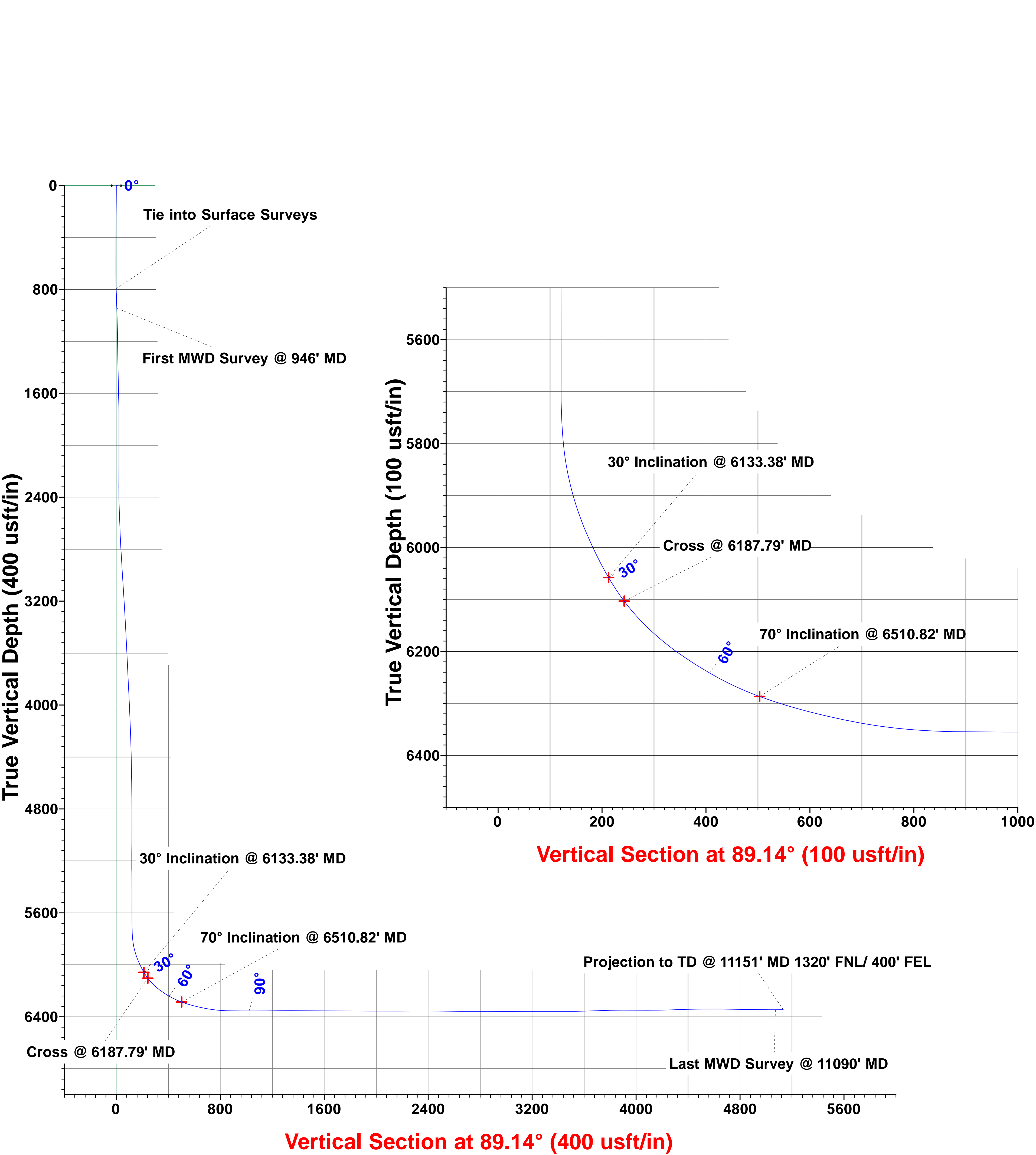


Northing 1369668.49 Easting 3297079.61 Latitude 40.34324 Longitude -104.43419

HighPoint Resources
Project: Weld County, CO (NAD83)
Site: Sec 04-T04N-R63W
Well: Park 4-63-4 1609B
Wellbore: Wellbore #1
Design: Wellbore #1 (Park 4-63-4 1609B/Wellbore #1)
Savanna 803

ANNOTATIONS

TVD	MD	Inc	Azi	+N/-S	+E/-W	VSect	Departure	Annotation
794.74	795.00	3.38	30.46	9.14	-1.10	-0.96	14.32	Tie into Surface Surveys
945.48	946.00	3.36	38.00	16.46	3.88	4.13	23.20	First MWD Survey @ 946' MD
6057.71	6133.38	30.00	84.01	674.00	202.62	212.72	787.26	30° Inclination @ 6133.38' MD
6103.06	6187.79	37.11	85.90	676.60	232.50	242.63	819.17	Cross @ 6187.79' MD
6286.70	6510.82	70.00	89.23	677.42	493.24	503.35	1078.07	70° Inclination @ 6510.82' MD
6345.81	11090.00	90.23	87.97	696.76	5062.66	5072.55	5649.02	Last MWD Survey @ 11090' MD
6345.56	11151.00	90.23	87.97	698.92	5123.63	5133.54	5710.02	Projection to TD @ 11151' MD 1320' FNL/ 400' FEL





Directional Survey Report

Company Name: Highpoint Resources
Well Name: Park 4-63-4 1609B
Field: DJ Basin
Rig ID: Savanna 803

State/Prov: Colorado
County: Weld
Location: Kersey
API/UWI: 05-123-49075

Survey Company: Atlas Drilling Services
Job Number: 00149HI-CO
Latitude: 40.34324
Longitude: -104.43419

Proposed Azimuth: 89.14
Declination: 8.04
North Reference: True
KB: 23

Svy	Depth	Inc	Azm	TVD	NS	EW	VS	DLS	Northing	Easting	A/B	L/R	GTot	HTot	DipA
Tiein	0	0	0	0	0	0	0	0	1,369,668.49	3,297,079.61			0	0	0
1	118	0.40	302.75	118.00	0.22	-0.35	-0.34	0.34	1,369,668.71	3,297,079.26			0	0	0
2	210	0.40	244.92	210.00	0.26	-0.91	-0.90	0.42	1,369,668.75	3,297,078.70			0	0	0
3	302	0.31	256.52	302.00	0.07	-1.44	-1.44	0.12	1,369,668.56	3,297,078.17			0	0	0
4	393	0.48	238.94	392.99	-0.19	-2.01	-2.01	0.23	1,369,668.30	3,297,077.60			0	0	0
5	488	0.57	218.37	487.99	-0.76	-2.64	-2.65	0.22	1,369,667.73	3,297,076.97			0	0	0
6	583	1.01	355.04	582.98	-0.30	-3.01	-3.01	1.56	1,369,668.19	3,297,076.60			0	0	0
7	678	2.72	0.14	677.93	2.79	-3.07	-3.03	1.81	1,369,671.28	3,297,076.54			0	0	0
8	773	3.82	24.84	772.78	7.91	-1.74	-1.62	1.86	1,369,676.40	3,297,077.87			0	0	0
9	795	3.38	30.46	794.74	9.14	-1.10	-0.96	2.56	1,369,677.63	3,297,078.51			0	0	0
10	946	3.36	38	945.48	16.46	3.88	4.13	0.29	1,369,684.95	3,297,083.49			1.00	0.53	67
11	1035	1.24	71.27	1,034.40	18.83	6.40	6.68	2.72	1,369,687.32	3,297,086.01			1.00	0.53	67.60
12	1126	1.37	60.60	1,125.38	19.68	8.28	8.57	0.30	1,369,688.17	3,297,087.89			1.00	0.53	66.60
13	1213	1.15	61.09	1,212.36	20.61	9.95	10.26	0.25	1,369,689.10	3,297,089.56			1.00	0.53	66.90
14	1302	1.24	75.50	1,301.34	21.28	11.66	11.98	0.35	1,369,689.77	3,297,091.27			1.00	0.52	67.30
15	1396	1.06	77.39	1,395.32	21.73	13.50	13.82	0.20	1,369,690.22	3,297,093.11			1.00	0.53	67
16	1486	1.86	16.98	1,485.29	23.31	14.73	15.08	1.80	1,369,691.80	3,297,094.34			1.00	0.53	67.40
17	1579	4.60	19.40	1,578.14	28.27	16.41	16.84	2.95	1,369,696.76	3,297,096.02			1.00	0.52	66.80
18	1669	6.94	12.39	1,667.68	36.98	18.78	19.33	2.71	1,369,705.47	3,297,098.39			1.00	0.53	66.90
19	1764	8.40	1.19	1,761.83	49.53	20.16	20.90	2.19	1,369,718.02	3,297,099.77			1.00	0.53	67.10
20	1858	8.40	358.50	1,854.82	63.26	20.12	21.07	0.42	1,369,731.75	3,297,099.73			1.00	0.53	67.10
21	1953	11.40	359.34	1,948.40	79.59	19.83	21.02	3.16	1,369,748.08	3,297,099.44			1.00	0.53	66.90
22	2048	11.27	359.64	2,041.54	98.26	19.66	21.13	0.15	1,369,766.75	3,297,099.27			1.00	0.52	-9999
23	2142	10.91	357.62	2,133.79	116.33	19.24	20.98	0.56	1,369,784.82	3,297,098.85			1.00	0.53	67
24	2237	10.21	355.41	2,227.18	133.71	18.19	20.19	0.85	1,369,802.20	3,297,097.80			1.00	0.52	67
25	2331	11.05	0.52	2,319.57	151.02	17.60	19.87	1.34	1,369,819.51	3,297,097.21			1.00	0.53	67.10
26	2426	10.61	3.21	2,412.87	168.85	18.18	20.71	0.71	1,369,837.34	3,297,097.79			1.00	0.53	66.80
27	2521	10.87	11.38	2,506.22	186.37	20.43	23.23	1.62	1,369,854.86	3,297,100.04			1.00	0.53	67.10
28	2615	10.87	10.41	2,598.53	203.78	23.78	26.84	0.19	1,369,872.27	3,297,103.39			1.00	0.53	66.90
29	2709	10.74	9.53	2,690.86	221.13	26.83	30.15	0.22	1,369,889.62	3,297,106.44			1.00	0.53	67.10
30	2804	11.27	17.90	2,784.12	238.70	31.15	34.73	1.77	1,369,907.19	3,297,110.76			1.00	0.53	67.10
31	2899	10.78	17.90	2,877.37	255.98	36.74	40.58	0.52	1,369,924.47	3,297,116.35			1.00	0.53	67
32	2993	9.90	17.77	2,969.84	272.04	41.91	45.98	0.94	1,369,940.53	3,297,121.52			1.00	-9999	-9999
33	3088	10.38	20.59	3,063.36	287.83	47.41	51.72	0.73	1,369,956.32	3,297,127.02			1.00	0.53	66.90

Svy	Depth	Inc	Azm	TVD	NS	EW	VS	DLS	Northing	Easting	A/B	L/R	GTot	HTot	DipA
34	3183	9.68	21.07	3,156.90	303.30	53.29	57.84	0.74	1,369,971.79	3,297,132.90			1.00	-9999	-9999
35	3278	11.49	15.96	3,250.29	319.85	58.76	63.56	2.14	1,369,988.34	3,297,138.37			1.00	0.53	66.90
36	3374	10.65	14.68	3,344.50	337.62	63.64	68.70	0.91	1,370,006.11	3,297,143.25			1.00	0.53	66.80
37	3468	10.56	15.43	3,436.89	354.33	68.13	73.44	0.18	1,370,022.82	3,297,147.74			1.00	0.53	67
38	3563	10.87	14.42	3,530.24	371.40	72.68	78.25	0.38	1,370,039.89	3,297,152.29			1.00	0.53	66.90
39	3657	10.74	14.46	3,622.57	388.46	77.07	82.90	0.14	1,370,056.95	3,297,156.68			1.00	-9999	66.90
40	3752	10.43	13.85	3,715.95	405.38	81.34	87.42	0.35	1,370,073.87	3,297,160.95			1.00	0.53	66.90
41	3847	10.08	13.19	3,809.44	421.83	85.30	91.62	0.39	1,370,090.32	3,297,164.91			1.00	0.53	66.90
42	3941	12.28	13.71	3,901.65	439.55	89.55	96.13	2.34	1,370,108.04	3,297,169.16			1.00	0.53	66.90
43	4035	11.89	11.07	3,993.56	458.76	93.77	100.65	0.72	1,370,127.25	3,297,173.38			-9999	0.53	66.80
44	4130	11.22	11.25	4,086.64	477.43	97.46	104.61	0.71	1,370,145.92	3,297,177.07			1.00	0.53	67.10
45	4225	11.05	10.54	4,179.85	495.45	100.92	108.35	0.23	1,370,163.94	3,297,180.53			1.00	0.53	66.90
46	4320	10.25	9.35	4,273.21	512.74	103.96	111.65	0.87	1,370,181.23	3,297,183.57			1.00	0.53	66.80
47	4415	10.91	6.74	4,366.60	530.01	106.39	114.33	0.86	1,370,198.50	3,297,186.00			1.00	0.53	66.90
48	4510	10.65	4.45	4,459.92	547.69	108.13	116.34	0.53	1,370,216.18	3,297,187.74			1.00	0.53	66.80
49	4604	10.03	4.14	4,552.39	564.51	109.39	117.85	0.66	1,370,233.00	3,297,189.00			1.00	0.53	67
50	4699	10.12	3.48	4,645.93	581.09	110.50	119.21	0.15	1,370,249.58	3,297,190.11			1.00	0.53	67
51	4793	9.72	1.63	4,738.52	597.27	111.22	120.18	0.54	1,370,265.76	3,297,190.83			1.00	0.53	67
52	4888	9.32	359.25	4,832.22	612.98	111.35	120.54	0.59	1,370,281.47	3,297,190.96			1.00	0.53	67
53	5005	7.73	359.07	4,947.92	630.32	111.10	120.55	1.36	1,370,298.81	3,297,190.71			1.00	-9999	67.10
54	5097	6.85	355.68	5,039.18	641.98	110.59	120.21	1.06	1,370,310.47	3,297,190.20			1.00	0.53	67.10
55	5191	6.27	354.22	5,132.56	652.67	109.65	119.43	0.64	1,370,321.16	3,297,189.26			1.00	0.53	66.90
56	5286	3.49	5.90	5,227.21	660.71	109.42	119.33	3.09	1,370,329.20	3,297,189.03			1.00	0.53	67
57	5381	1.50	23.94	5,322.12	664.73	110.22	120.19	2.23	1,370,333.22	3,297,189.83			1.00	0.53	67.10
58	5475	0.31	47.29	5,416.10	666.02	110.91	120.89	1.30	1,370,334.51	3,297,190.52			1.00	-9999	22
59	5570	0.27	27.20	5,511.10	666.40	111.20	121.19	0.11	1,370,334.89	3,297,190.81			1.00	0.53	-9999
60	5664	0.35	168.30	5,605.10	666.31	111.36	121.35	0.62	1,370,334.80	3,297,190.97			1.00	0.53	67.10
61	5758	0.88	184.39	5,699.09	665.31	111.36	121.34	0.59	1,370,333.80	3,297,190.97			1.00	0.53	67.10
62	5853	4.77	93.43	5,793.98	664.35	115.25	125.21	5.12	1,370,332.84	3,297,194.86			1.00	-9999	67.10
63	5947	14.49	86.82	5,886.55	664.77	130.93	140.90	10.39	1,370,333.26	3,297,210.54			-9999	0.53	67.10
64	6042	23.73	80.52	5,976.22	668.58	161.72	171.74	9.95	1,370,337.07	3,297,241.33			1.00	0.53	66.90
65	6136	30.18	84.09	6,059.97	674.14	203.93	214.02	7.07	1,370,342.63	3,297,283.54			1.00	0.53	67.10
66	6230	42.78	87	6,135.41	678.26	259.54	269.69	13.53	1,370,346.75	3,297,339.15			1.00	0.52	67
67	6325	54.09	91.01	6,198.35	679.27	330.47	340.63	12.31	1,370,347.76	3,297,410.08			1.00	0.52	66.90
68	6420	61.16	91.23	6,249.19	677.70	410.63	420.76	7.44	1,370,346.19	3,297,490.24			1.00	0.52	66.90
69	6514	70.31	89.16	6,287.78	677.46	496.23	506.34	9.94	1,370,345.95	3,297,575.84			-9999	0.52	-9999
70	6609	75.52	88.54	6,315.68	679.29	586.99	597.12	5.52	1,370,347.78	3,297,666.60			1.00	0.52	67
71	6703	79.32	89.25	6,336.15	681.06	678.70	688.84	4.11	1,370,349.55	3,297,758.31			1.00	0.52	66.90
72	6798	84.76	89.47	6,349.30	682.11	772.74	782.89	5.73	1,370,350.60	3,297,852.35			1.00	0.52	66.90
73	6892	89.09	89.29	6,354.34	683.12	866.58	876.73	4.61	1,370,351.61	3,297,946.19			1.00	0.52	-9999
74	6987	89.93	88.23	6,355.15	685.18	961.55	971.73	1.42	1,370,353.67	3,298,041.16			1.00	0.52	66.90
75	7081	90.06	87.31	6,355.16	688.83	1,055.48	1,065.70	0.99	1,370,357.32	3,298,135.09			1.00	0.52	66.80
76	7176	90.50	89.64	6,354.70	691.36	1,150.44	1,160.68	2.50	1,370,359.85	3,298,230.05			1.00	-9999	66.90
77	7271	90.85	89.29	6,353.58	692.25	1,245.43	1,255.68	0.52	1,370,360.74	3,298,325.04			1.00	-9999	66.90
78	7363	89.66	90.22	6,353.17	692.64	1,337.42	1,347.67	1.64	1,370,361.13	3,298,417.03			1.00	0.52	-9999

Svy	Depth	Inc	Azm	TVD	NS	EW	VS	DLS	Northing	Easting	A/B	L/R	GTot	HTot	DipA
79	7457	89.93	89.86	6,353.51	692.58	1,431.42	1,441.65	0.48	1,370,361.07	3,298,511.03			1.00	0.52	66.90
80	7552	89.57	90.04	6,353.92	692.66	1,526.42	1,536.64	0.42	1,370,361.15	3,298,606.03			1.00	0.52	66.90
81	7647	89.57	89.64	6,354.63	692.93	1,621.42	1,631.63	0.42	1,370,361.42	3,298,701.03			1.00	0.52	66.90
82	7741	89.35	88.89	6,355.52	694.13	1,715.40	1,725.63	0.83	1,370,362.62	3,298,795.01			1.00	0.52	66.90
83	7836	89.84	92.15	6,356.19	693.27	1,810.38	1,820.59	3.47	1,370,361.76	3,298,889.99			1.00	0.52	66.90
84	7931	90.10	91.80	6,356.24	690.00	1,905.33	1,915.47	0.46	1,370,358.49	3,298,984.94			1.00	0.52	-9999
85	8025	89.93	91.54	6,356.22	687.26	1,999.29	2,009.38	0.33	1,370,355.75	3,299,078.90			1.00	0.52	-9999
86	8119	90.19	90.57	6,356.12	685.52	2,093.27	2,103.32	1.07	1,370,354.01	3,299,172.88			1.00	0.52	66.90
87	8213	89.97	90.30	6,355.99	684.81	2,187.27	2,197.30	0.37	1,370,353.30	3,299,266.88			1.00	0.52	-9999
88	8308	90.23	89.77	6,355.82	684.75	2,282.27	2,292.29	0.62	1,370,353.24	3,299,361.88			1.00	-9999	28.20
89	8402	90.01	89.29	6,355.62	685.52	2,376.26	2,386.29	0.56	1,370,354.01	3,299,455.87			1.00	0.52	66.90
90	8497	89.48	89.55	6,356.05	686.49	2,471.26	2,481.28	0.62	1,370,354.98	3,299,550.87			-9999	0.52	66.90
91	8591	89.40	89.33	6,356.97	687.40	2,565.25	2,575.28	0.25	1,370,355.89	3,299,644.86			1.00	-9999	66.90
92	8686	89.35	88.50	6,358.00	689.20	2,660.22	2,670.27	0.88	1,370,357.69	3,299,739.83			1.00	0.52	66.90
93	8781	90.41	87.75	6,358.20	692.31	2,755.17	2,765.25	1.37	1,370,360.80	3,299,834.78			1.00	0.52	66.90
94	8876	89.57	89.51	6,358.22	694.58	2,850.14	2,860.24	2.05	1,370,363.07	3,299,929.75			1.00	-9999	66.90
95	8970	90.01	88.85	6,358.56	695.93	2,944.13	2,954.24	0.84	1,370,364.42	3,300,023.74			1.00	0.52	66.90
96	9065	90.15	88.76	6,358.43	697.91	3,039.11	3,049.24	0.18	1,370,366.40	3,300,118.72			1.00	0.52	66.90
97	9159	90.10	87.40	6,358.22	701.06	3,133.05	3,143.22	1.45	1,370,369.55	3,300,212.66			1.00	0.52	66.90
98	9254	90.15	88.06	6,358.02	704.82	3,227.98	3,238.19	0.70	1,370,373.31	3,300,307.59			1.00	0.52	66.90
99	9348	89.84	88.41	6,358.03	707.72	3,321.93	3,332.18	0.50	1,370,376.21	3,300,401.54			1.00	0.52	66.90
100	9443	89.84	87.48	6,358.29	711.12	3,416.87	3,427.16	0.98	1,370,379.61	3,300,496.48			1.00	0.52	66.90
101	9537	90.46	88.32	6,358.04	714.57	3,510.81	3,521.14	1.11	1,370,383.06	3,300,590.42			1.00	0.52	66.80
102	9631	91.74	91.89	6,356.24	714.40	3,604.77	3,615.09	4.03	1,370,382.89	3,300,684.38			1.00	0.52	66.90
103	9726	91.96	91.41	6,353.17	711.66	3,699.68	3,709.95	0.56	1,370,380.15	3,300,779.29			1.00	0.52	66.90
104	9820	91.74	90.39	6,350.14	710.19	3,793.62	3,803.85	1.11	1,370,378.68	3,300,873.23			1.00	-9999	66.90
105	9914	89.57	91.41	6,349.06	708.71	3,887.60	3,897.79	2.55	1,370,377.20	3,300,967.21			1.00	0.52	66.80
106	10008	89.88	90.35	6,349.51	707.27	3,981.58	3,991.75	1.17	1,370,375.76	3,301,061.19			1.00	0.52	66.80
107	10102	89.93	87.57	6,349.67	708.97	4,075.56	4,085.74	2.96	1,370,377.46	3,301,155.17			1.00	0.52	66.80
108	10197	90.77	86.34	6,349.09	714.02	4,170.42	4,180.67	1.57	1,370,382.51	3,301,250.03			1.00	0.52	66.80
109	10291	92.44	89.82	6,346.46	717.17	4,264.31	4,274.59	4.10	1,370,385.66	3,301,343.92			1.00	0.52	66.90
110	10386	91.83	92.02	6,342.92	715.64	4,359.23	4,369.48	2.40	1,370,384.13	3,301,438.84			1.00	0.52	66.90
111	10481	90.06	92.68	6,341.35	711.75	4,454.13	4,464.31	1.99	1,370,380.24	3,301,533.74			1.00	0.52	66.90
112	10576	90.77	92.68	6,340.66	707.31	4,549.02	4,559.13	0.75	1,370,375.80	3,301,628.63			1.00	0.52	66.80
113	10668	89.17	93.08	6,340.71	702.68	4,640.90	4,650.93	1.79	1,370,371.17	3,301,720.51			1.00	0.52	66.90
114	10762	88.86	92.33	6,342.33	698.25	4,734.78	4,744.73	0.86	1,370,366.74	3,301,814.39			1.00	0.52	66.80
115	10857	89.66	91.63	6,343.55	694.97	4,829.72	4,839.60	1.12	1,370,363.46	3,301,909.33			1.00	0.52	66.80
116	10951	88.86	89.33	6,344.77	694.18	4,923.70	4,933.56	2.59	1,370,362.67	3,302,003.31			1.00	0.52	66.90
117	11045	89.84	88.98	6,345.83	695.56	5,017.68	5,027.56	1.11	1,370,364.05	3,302,097.29			1.00	0.52	-9999
118	11090	90.23	87.97	6,345.81	696.76	5,062.66	5,072.55	2.41	1,370,365.25	3,302,142.27			1.00	0.52	66.90
PTB	11151	90.23	87.97	6,345.56	698.92	5,123.63	5,133.54	0	1,370,367.41	3,302,203.24			0	0	0