

12N/62W

30

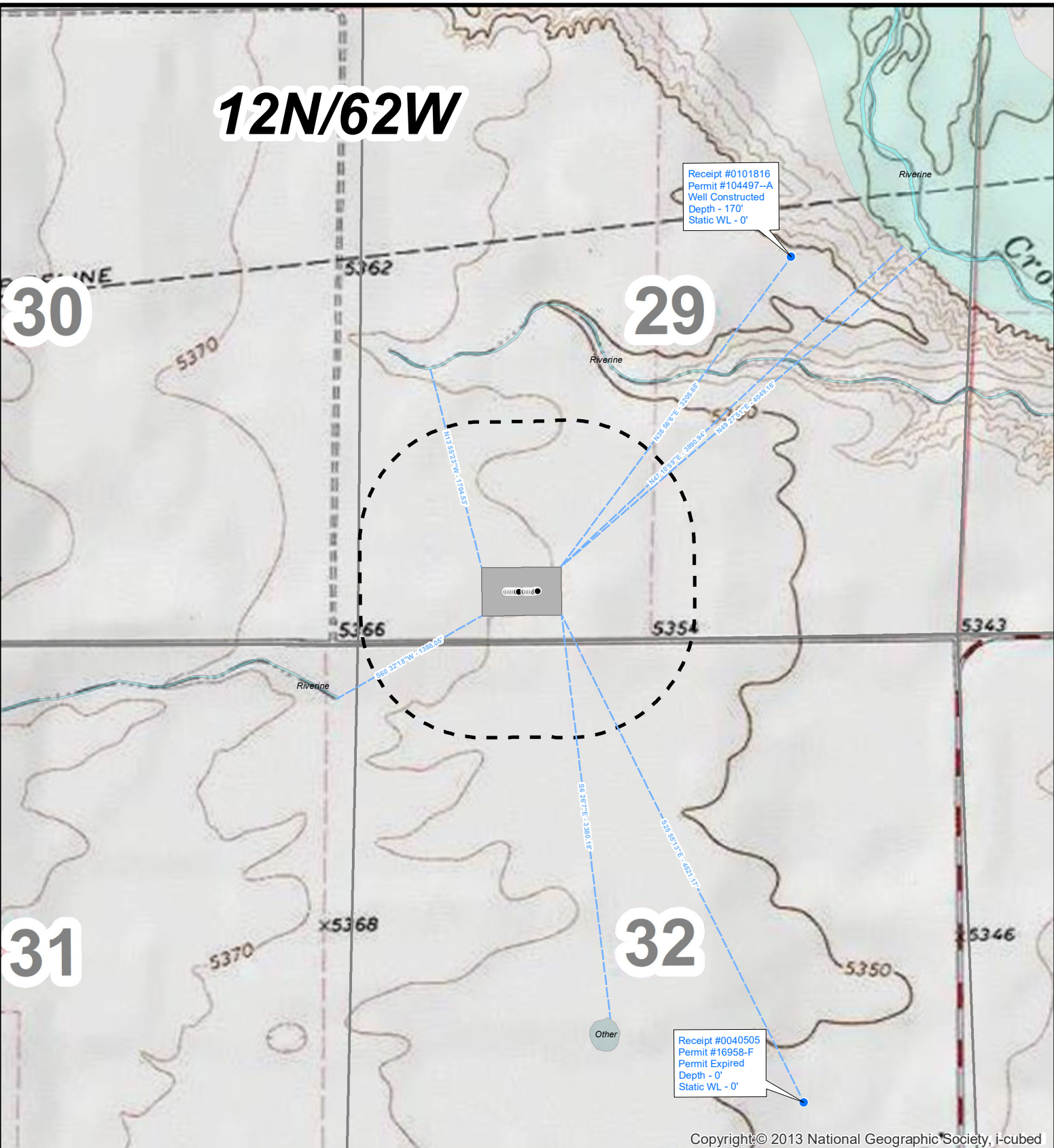
29

31

32

Receipt #0101816
Permit #104497--A
Well Constructed
Depth - 170'
Static WL - 0'

Receipt #0040505
Permit #16958-F
Permit Expired
Depth - 0'
Static WL - 0'



Copyright © 2013 National Geographic Society, i-cubed

HighPoint

RESOURCES

Hydrology Map
Randall Creek 29 SW
SW, Section 29, T12N, R62W
Weld County, Colorado



Legend

- Surface Hole Location
- 1,000' Buffer
- DJ Basin Pad Locations

- Water Wells (CDWR)
- Water Distance Line

CO Wetlands (Type)

- Other
- Riverine
- FEMA Floodplain (2/29/2016)

