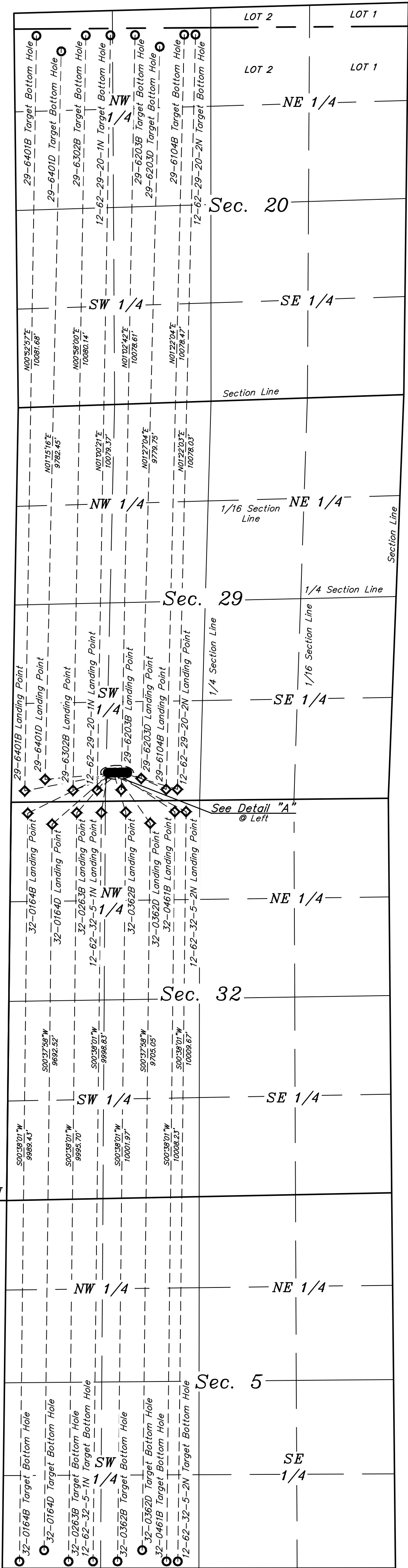


LINE TABLE			LINE TABLE		
LINE	DIRECTION	LENGTH	LINE	DIRECTION	LENGTH
L1	S09°10'27"W	539.80'	L9	S79°14'25"W	1314.96'
L2	S63°09'20"E	1154.55'	L10	S84°52'29"W	1039.19'
L3	S63°39'15"W	1224.41'	L11	S70°35'09"W	719.52'
L4	S48°44'38"W	1046.65'	L12	S12°13'07"W	238.07'
L5	S41°23'03"W	715.65'	L13	S68°13'07"E	215.83'
L6	S17°22'48"E	555.72'	L14	S66°25'42"E	567.15'
L7	S35°07'39"E	827.94'	L15	S51°34'50"W	378.44'
L8	S56°27'09"E	948.03'	L16	S73°33'28"E	792.27'



WELL	SHL FOOTAGES	SEC.	TWP.	RNG.
RANDALL CREEK 12-62-32-5-1N	382' FSL 1282' FWL	29	12N	62W
RANDALL CREEK 12-62-32-5-2N	382' FSL 1297' FWL	29	12N	62W
RANDALL CREEK 32-0164B	382' FSL 1312' FWL	29	12N	62W
RANDALL CREEK 32-0164D	382' FSL 1327' FWL	29	12N	62W
RANDALL CREEK 32-0263B	382' FSL 1342' FWL	29	12N	62W
RANDALL CREEK 32-0362B	382' FSL 1357' FWL	29	12N	62W
RANDALL CREEK 32-0362D	382' FSL 1372' FWL	29	12N	62W
RANDALL CREEK 32-0461B	382' FSL 1387' FWL	29	12N	62W
RANDALL CREEK 12-62-29-20-1N	382' FSL 1437' FWL	29	12N	62W
RANDALL CREEK 12-62-29-20-2N	382' FSL 1452' FWL	29	12N	62W
RANDALL CREEK 29-6401B	382' FSL 1467' FWL	29	12N	62W
RANDALL CREEK 29-6401D	382' FSL 1482' FWL	29	12N	62W
RANDALL CREEK 29-6302B	382' FSL 1497' FWL	29	12N	62W
RANDALL CREEK 29-6203B	382' FSL 1512' FWL	29	12N	62W
RANDALL CREEK 29-6203D	382' FSL 1527' FWL	29	12N	62W
RANDALL CREEK 29-6104B	382' FSL 1542' FWL	29	12N	62W

WELL	LP FOOTAGES	SEC.	TWP.	RNG.
RANDALL CREEK 12-62-32-5-1N	150' FNL 1205' FWL	32	12N	62W
RANDALL CREEK 12-62-32-5-2N	150' FNL 2336' FWL	32	12N	62W
RANDALL CREEK 32-0164B	150' FNL 224' FWL	32	12N	62W
RANDALL CREEK 32-0164D	300' FNL 551' FWL	32	12N	62W
RANDALL CREEK 32-0263B	150' FNL 878' FWL	32	12N	62W
RANDALL CREEK 32-0362B	150' FNL 1532' FWL	32	12N	62W
RANDALL CREEK 32-0362D	300' FNL 1859' FWL	32	12N	62W
RANDALL CREEK 32-0461B	150' FNL 2186' FWL	32	12N	62W
RANDALL CREEK 12-62-29-20-1N	150' FSL 1145' FWL	29	12N	62W
RANDALL CREEK 12-62-29-20-2N	150' FSL 2216' FWL	29	12N	62W
RANDALL CREEK 29-6401B	150' FSL 180' FWL	29	12N	62W
RANDALL CREEK 29-6401D	300' FSL 449' FWL	29	12N	62W
RANDALL CREEK 29-6302B	150' FSL 823' FWL	29	12N	62W
RANDALL CREEK 29-6203B	150' FSL 1466' FWL	29	12N	62W
RANDALL CREEK 29-6203D	300' FSL 1729' FWL	29	12N	62W
RANDALL CREEK 29-6104B	150' FSL 2066' FWL	29	12N	62W

WELL	TBH FOOTAGES	SEC.	TWP.	RNG.
RANDALL CREEK 12-62-32-5-1N	90' FSL 1209' FWL	5	11N	62W
RANDALL CREEK 12-62-32-5-2N	90' FSL 2340' FWL	5	11N	62W
RANDALL CREEK 32-0164B	90' FSL 228' FWL	5	11N	62W
RANDALL CREEK 32-0164D	240' FSL 555' FWL	5	11N	62W
RANDALL CREEK 32-0263B	90' FSL 882' FWL	5	11N	62W
RANDALL CREEK 32-0362B	90' FSL 1536' FWL	5	11N	62W
RANDALL CREEK 32-0362D	240' FSL 1863' FWL	5	11N	62W
RANDALL CREEK 32-0461B	90' FSL 2190' FWL	5	11N	62W
RANDALL CREEK 12-62-29-20-1N	327' FNL 1285' FWL	20	12N	62W
RANDALL CREEK 12-62-29-20-2N	350' FNL 2420' FWL	20	12N	62W
RANDALL CREEK 29-6401B	307' FNL 298' FWL	20	12N	62W
RANDALL CREEK 29-6401D	464' FNL 627' FWL	20	12N	62W
RANDALL CREEK 29-6302B	320' FNL 956' FWL	20	12N	62W
RANDALL CREEK 29-6203B	334' FNL 1613' FWL	20	12N	62W
RANDALL CREEK 29-6203D	490' FNL 1941' FWL	20	12N	62W
RANDALL CREEK 29-6104B	347' FNL 2207' FWL	20	12N	62W

LEGEND:  
● = PROPOSED WELLHEAD.  
○ = LANDING POINT.  
○ = TARGET BOTTOM HOLE.

NOTES:

[REV: 01 10-17-18 B.L.B. (WELL NAME CHANGES)]

HIGHPOINT OPERATING CORPORATION

RANDALL CREEK 29 SW PAD  
SE 1/4 SW 1/4, SECTION 29, T12N, R62W, 6th P.M.  
WELD COUNTY, COLORADO

SURVEYED BY	GREG WEIMER, D.E.	08-20-18	SCALE
DRAWN BY	B.L.B.	09-12-18	1" = 1000'
MULTI-Well PLAN		FIGURE #5	



UELTA, LLC  
Corporate Office \* 85 South 200 East  
Vernal, UT 84078 \* (435) 789-1017