



Bayswater Exploration & Production, LLC

G & D Hanks O-27-28HN

API # 05-123-46029

Production

May 24, 019

Quote #: 31543

Execution #: 18185



Bayswater Exploration & Production, LLC

Attention: Mr. Josh Falls | (720) 484-1146 | Josh.Falls@iptenergyservices.com

Bayswater Exploration & Production | 730 17th Street, Suite 610 | Denver, CO. 80202

Dear Mr. Josh Falls,

Thank you for the opportunity to provide cementing services on this well. BJ Services strives to achieve complete customer satisfaction. If you have any questions regarding the services or data provided, please contact BJ Services at any time.

Sincerely,
Jason Creel
Field Engineer I | (307) 256-3006 | jason.creel@bjservices.com

Field Office 1716 East Allison Rd., Cheyenne WY, 82007
Phone: (307) 638-5585

Sales Office 999 18th St. Suite 1200 Denver, CO 80202
Phone: (281) 408-2361

BJ Cementing Treatment Report

SERVICE SUPERVISOR	Chad Johnson	RIG	True 38
DISTRICT	Cheyenne, WY	COUNTY	WELD
SERVICE	Cementing	STATE / PROVINCE	CO

WELL GEOMETRY

TYPE	ID (in)	OD (in)	WEIGHT (lbs/ft)	MD (ft)	TVD (ft)	EXCESS (%)
Previous Casing	8.92	9.63	36.00	1,549.00	1,549.00	
Open Hole	8.50			18,150.00	7,219.00	5.00
Casing	4.78	5.50	20.00	18,137.00	7,219.00	

HARDWARE

Bottom Plug Used?	No	Centralizers Type	Rigid
Top Plug Used?	Yes	Landing Collar Depth (ft)	18,112
Top Plug Provided By	Non BJ	Pipe Movement	None
Top Plug Size	5.500	Job Pumped Through	Manifold
Centralizers Used	Yes	Top Connection Thread	BTC
Centralizers Quantity	215.00	Top Connection Size	5.5

CIRCULATION PRIOR TO JOB

Well Circulated By	Rig	PV Mud Out	16
Circulation Prior to Job	Yes	YP Mud In	9
Circulation Time (min)	180.00	YP Mud Out	9
Circulation Rate (bpm)	10.00	Solids Present at End of Circulation	No
Circulation Volume (bbls)	1,800.00	10 sec SGS	9.00
Lost Circulation Prior to Cement Job	No	10 min SGS	19.00
Mud Density In (ppg)	10.00	30 min SGS	19.00
Mud Density Out (ppg)	10.00	Flare Prior to / during the Cement Job	No
PV Mud In	16	Gas Present	No

TEMPERATURE

Ambient Temperature (°F)	70.00	Mix Water Temperature (°F)	60.00
--------------------------	-------	----------------------------	-------

Client: Bayswater Exploration &
Production, LLC

Well: G & D HANKS O-27-28HN

Well
API: 05-123-46029

Start Date: 5/24/2019

End
Date: 5/24/2019



FLUID DETAILS

FLUID TYPE	FLUID NAME	DENSITY (ppg)	YIELD (Cu Ft/sk)	H ₂ O REQ. (gals/sk)	PLN TOP FLD (ft)	LENGTH (ft)	VOL (sk)	VOL (Cu Ft)	VOL (bbls)
Spacer / Pre Flush / Flush	IntegraGuard EZ Spacer II	12.0000			0.00				80.0000
Spacer / Pre Flush / Flush	IntegraGuard EZ Spacer II	11.5000			0.00				26.0000
Spacer / Pre Flush / Flush	IntegraGuard EZ Spacer II	11.0000			0.00				26.0000
Lead Slurry	BJCem P100.3.01C	13.2000	1.8295	9.87	0.00	7,100.00	960	1,757.0000	312.8000
Tail Slurry	BJCem P50.6.02C	13.5000	1.4772	7.45	7,100.00	11,056.00	1,810	2,674.0000	476.2000
Displacement 2	Retarded Water w/ Clay Protection & Biocide	8.3331				0.00	0	0.0000	10.0000
Displacement Final	Water w/ Clay Protection & Biocide	8.3331			0.00			0.0000	391.8000

Client: Bayswater Exploration & Production, LLC

Well: G & D HANKS O-27-28HN

Well API: 05-123-46029

Start Date: 5/24/2019

End Date: 5/24/2019



FLUID TYPE	FLUID NAME	COMPONENT	CONCENTRATION	UOM
Spacer / Pre Flush / Flush	IntegraGuard EZ Spacer II	IntegraGuard GW-86	1.2000	PPB
Spacer / Pre Flush / Flush	IntegraGuard EZ Spacer II	RETARDER, R-31	0.5000	PPB
Spacer / Pre Flush / Flush	IntegraGuard EZ Spacer II	SPACER SURFACTANT, SS-267	1.0000	GPB
Spacer / Pre Flush / Flush	IntegraGuard EZ Spacer II	RETARDER, R-7C	2.0000	PPB
Spacer / Pre Flush / Flush	IntegraGuard EZ Spacer II	WEIGHTING ADDITIVE, W-11	243.3100	PPB
Lead Slurry	BJCem P100.3.01C	FOAM PREVENTER, FP-25	0.3000	BWOB
Lead Slurry	BJCem P100.3.01C	RETARDER, SR-20	0.7000	BWOB
Lead Slurry	BJCem P100.3.01C	CEMENT, ASTM TYPE III	100.0000	PCT
Lead Slurry	BJCem P100.3.01C	IntegraGuard GW-86	0.1000	BWOB
Lead Slurry	BJCem P100.3.01C	FLUID LOSS, FL-66	0.5000	BWOB
Lead Slurry	BJCem P100.3.01C	IntegraCare EC-2	3.0000	BWOB
Tail Slurry	BJCem P50.6.02C	Flyash (Rockies)	50.0000	PCT
Tail Slurry	BJCem P50.6.02C	CEMENT, CLASS G	50.0000	PCT
Tail Slurry	BJCem P50.6.02C	EXTENDER, BENTONITE	2.0000	BWOB
Tail Slurry	BJCem P50.6.02C	FOAM PREVENTER, FP-25	0.3000	BWOB
Tail Slurry	BJCem P50.6.02C	FLUID LOSS, FL-66	0.2000	BWOB
Tail Slurry	BJCem P50.6.02C	IntegraGuard GW-86	0.1000	BWOB
Tail Slurry	BJCem P50.6.02C	RETARDER, SR-20	0.0700	BWOB
Displacement 2	Retarded Water w/ Clay Protection & Biocide	RETARDER, SR-61L	0.1000	GPB
Displacement 2	Retarded Water w/ Clay Protection & Biocide	ResCare CS-2	0.0800	GPB
Displacement 2	Retarded Water w/ Clay Protection & Biocide	BIOCIDE, BIOC11139W	0.0100	GPB
Displacement Final	Water w/ Clay Protection & Biocide	ResCare CS-2	0.0800	GPB
Displacement Final	Water w/ Clay Protection & Biocide	BIOCIDE, BIOC11139W	0.0100	GPB

DISPLACEMENT AND END OF JOB SUMMARY

Displaced By	BJ	Amt of Cement Returned / Reversed	21.00
Calculated Displacement Vol (bbls)	402.00	Method Used to Verify Returns	Visual
Actual Displacement Vol (bbls)	402.00	Amt of Spacer to Surface	80.00
Did Float Hold?	Yes	Pressure Left on Casing (psi)	0.00
Bump Plug	Yes	Amt Bled Back After Job	4.50
Bump Plug Pressure (psi)	3,000.00	Total Volume Pumped (bbls)	1,277.00
Were Returns Planned at Surface	Yes	Top Out Cement Spotted	No
Cement Returns During Job	Full	Lost Circulation During Cement Job	No

Client: Bayswater Exploration & Production, LLC

Well: G & D HANKS O-27-28HN

Well API: 05-123-46029

Start Date: 5/24/2019

End Date: 5/24/2019



BJ Cementing Event Log

Long String - Cheyenne, WY - Chad Johnson

SEQ	START DATE / TIME	EVENT	DENSITY (ppg)	PUMP RATE (bpm)	PUMP VOL (bbls)	PIPE PRESSURE (psi)	COMMENTS
1	05/24/2019 06:30	Callout					Crew called out requested on location for 1500
2	05/24/2019 13:00	Arrive on Location					Crew arrived on location
3	05/24/2019 13:15	STEACS Briefing					Safety meeting
4	05/24/2019 13:30	Spot Units					Spotted all units
5	05/24/2019 13:40	Rig Up					Rigged up all equipment
6	05/24/2019 15:00	STEACS Briefing					Safety meeting
7	05/24/2019 15:29	Prime Up	8.3400	3.00	5.00	400.00	Fill lines
8	05/24/2019 15:32	Pressure Test					Pressure test lines to 5000 psi
9	05/24/2019 15:41	Pump Spacer	12.0000	4.00	80.00	500.00	Pump 28 bbls spacer at 12 ppg, 26 bbls spacer at 11.5 ppg, pump 26 bbls spacer at 11 ppg
10	05/24/2019 16:09	Pump Lead Cement	13.2000	8.00	313.00	600.00	Pump lead cement, (960 sks, 1.83 Y, 9.87 gal/sk)
11	05/24/2019 16:51	Pump Tail Cement	13.5000	8.00	477.00	600.00	Pump tail cement, (1810 sks, 1.48 Y, 7.45 gal/sk)
12	05/24/2019 18:05	Other (See comment)					Shutdown
13	05/24/2019 18:07	Wash Pumps and Lines					Wash pumps and lines to pit
14	05/24/2019 18:12	Drop Top Plug					Drop top plug
15	05/24/2019 18:13	Pump Displacement	8.3400	10.00	380.00	0.00	Pump displacement
16	05/24/2019 18:43	Spacer Back-to-Surface					Spacer back to surface, 80 bbls spacer to surface
17	05/24/2019 19:00	Cement Back-to-Surface					Cement back to surface, 21 bbls cement to surface
18	05/24/2019 19:04	Other (See comment)	8.3400	5.00	22.00	0.00	Slow rate to 5 bpm
19	05/24/2019 19:08	Land Plug					Land plug at 3000 psi, took to 3500 psi
20	05/24/2019 19:11	Check Floats					Check floats, floats holding, bbls back
21	05/24/2019 19:15	STEACS Briefing					Safety meeting
22	05/24/2019 19:30	Rig Down					Rigged down all equipment
23	05/24/2019 21:00	Leave Location					Crew departed location

Client: Bayswater Exploration & Production, LLC

Plan #: ORD-18185-L6Y9Y5

Well: G & D HANKS O-27-28HN

Execution #: EXC-18185-L6Y9Y502

Well 05-123-46029

API:

Quote #: QUO-31543-B8Q0N4

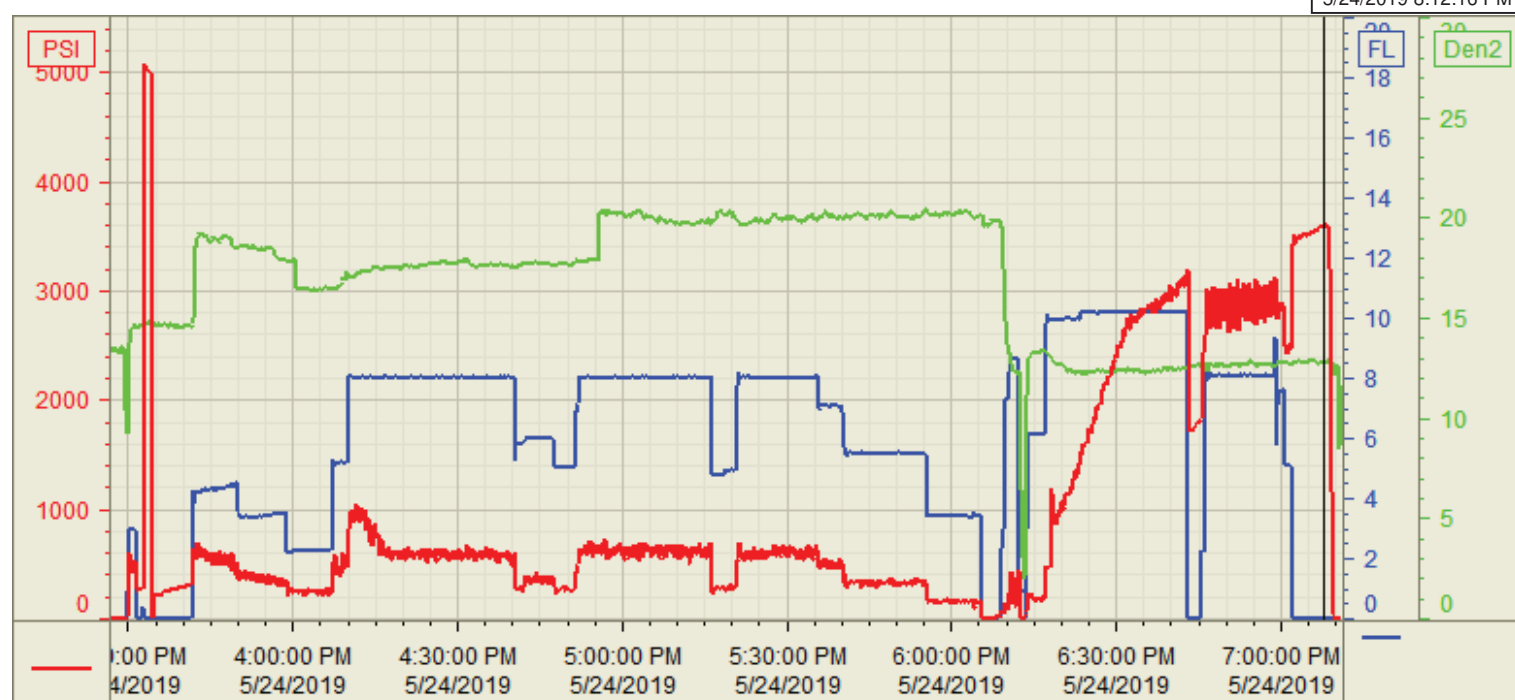


Customer: Bayswater
Well Number: O-27-28HN
Lease Info: G & D Hanks



Print Date/Time

5/24/2019 8:12:16 PM



	Name	Y value	X value/time stamp	Tag name Y
1	PS - Press (PSI)	3586.7	5/24/2019 7:07:50 PM	Cementer\PS_DISCHARGE_PRESS_DIAL
2	DH Density (PPG)	9	5/24/2019 7:07:48 PM	Cementer\DENSITY2_ACTUAL_RATE
3	Combined pump rate	0.00	5/24/2019 7:07:46 PM	Cementer\Flow_Combined
4				
5				

Source: Control1 8:12:16 PM