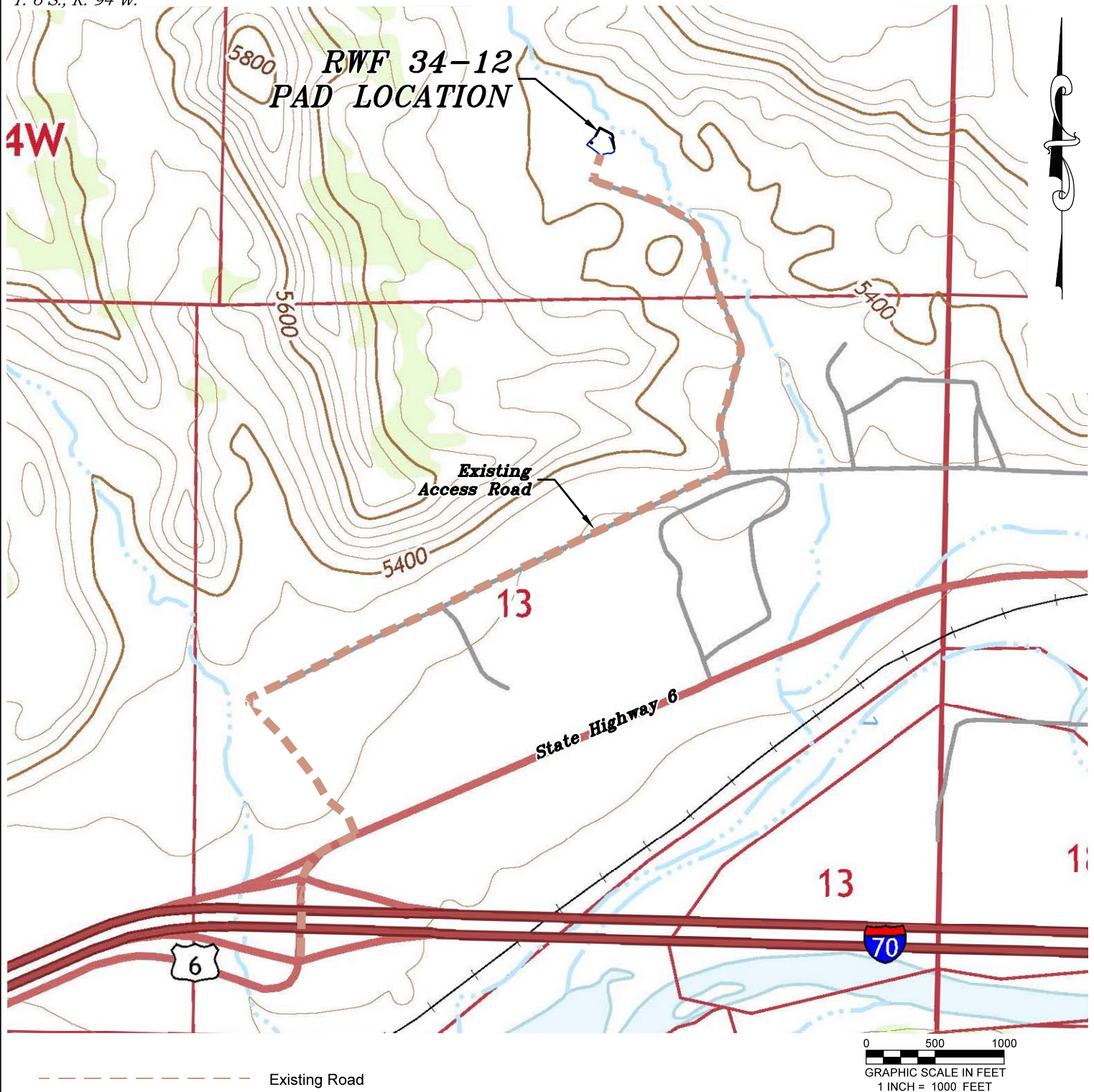


Section 12
T. 6 S., R. 94 W.



ACCESS DESCRIPTION:

FROM THE I-70 EXIT No. 87 (WEST RIFLE), PROCEED NORTH ALONG STATE HIGHWAY 6 ± 0.2 MILES TO AN INTERSECTION WITH A DIRT/GRAVEL ROAD, PROCEED LEFT IN A NORTHWESTERLY DIRECTION ± 0.2 MILES TO A THREE-WAY INTERSECTION WITH A DIRT/GRAVEL ROAD, PROCEED RIGHT IN A NORTHEASTERLY DIRECTION ± 0.7 MILES AN INTERSECTION WITH A DIRTY/GRAVEL ROAD, PROCEED LEFT IN A NORTHERLY DIRECTION ± 0.5 MILES TO THE EXISTING RWF 34-12 PAD LOCATION, AS SHOWN HEREON.

REVISED: 6/14/19

136 East Third Street
Rifle, Colorado 81650
Ph. (970) 625-2720
Fax (970) 625-2773



BOOKCLIFF
Survey Services, Inc.

SCALE: 1" = 1000'
DATE: 4/22/19
PLAT: 3 of 4
PROJECT: TEP Valley
DFT: cs

Construction Plan Prepared for:



TEP Rocky Mountain LLC

RWF 34-12 Pad - Plat 3
ACCESS ROAD & TOPO MAP