

PETROLEUM DEVELOPMENT CORP Weld County CO

Well Name: **O Investment Properties 6Y-401**

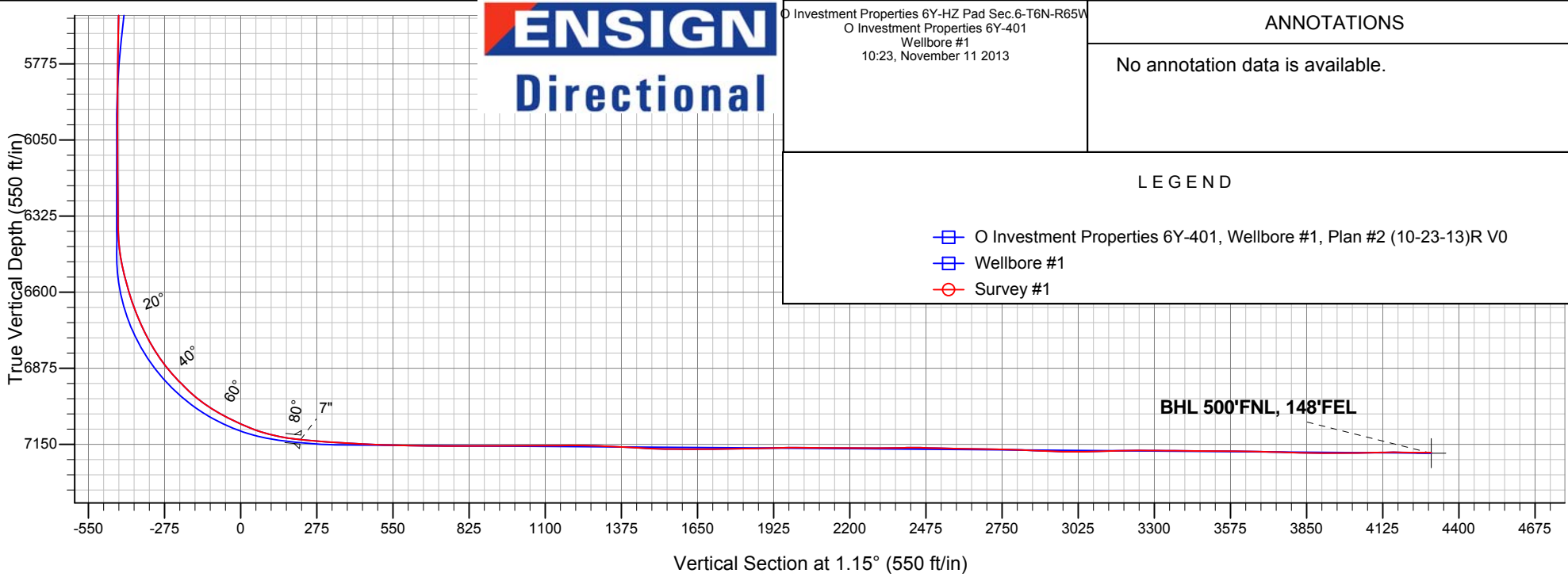
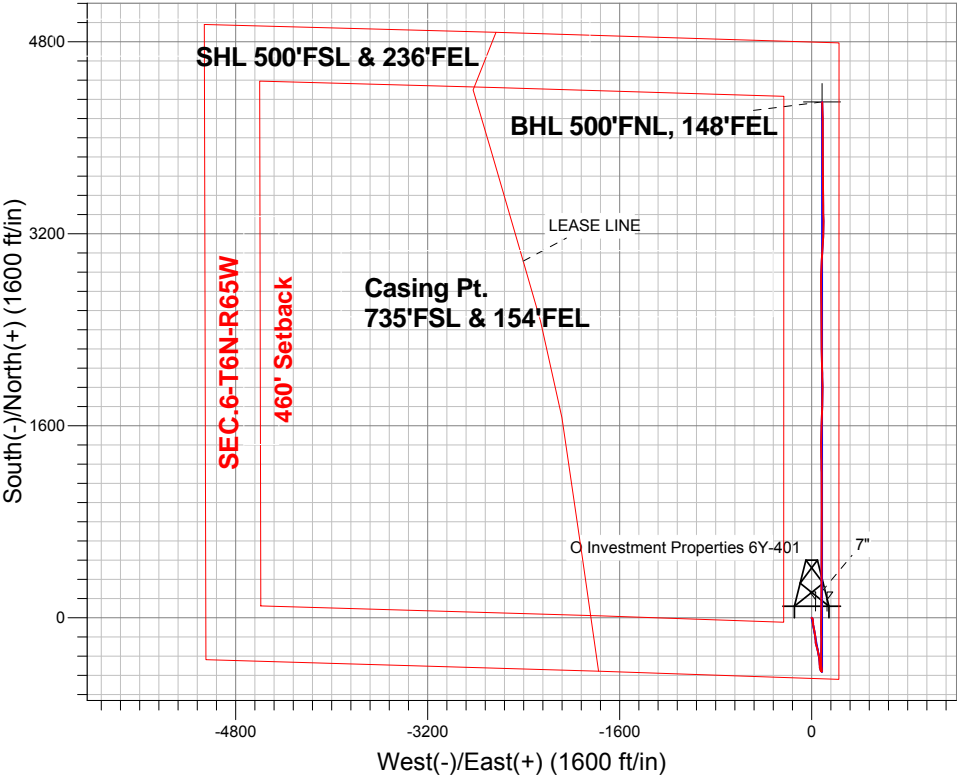
Surface Location: O Investment Properties 6Y-HZ Pad Sec.6-T6N-R65W
North American Datum 1983 , US State Plane 1983 , Colorado Northern Zone

Ground Elevation: 4777.0

+N/-S	+E/-W	Northing	Easting	Latitude	Longitude	Slot
0.0	0.0	1430039.82	3223079.65	40.511090	-104.697700	
RKB - 15' WELL @ 4792.0ft (RKB - 15')						

FINAL SURVEY

Projected Bottom Hole Location
11587'MD 7180'TVD 4299'N & 88'E of SHL
89.5 degree Incl @ 357.8 degree AZM





PETROLEUM DEVELOPMENT CORP Weld County CO

SEC.6-T6N-R65W

O Investment Properties 6Y-HZ Pad Sec.6-T6N-R65W

O Investment Properties 6Y-401

Wellbore #1

Survey: Survey #1

Standard Survey Report

11 November, 2013

Company:	PETROLEUM DEVELOPMENT CORP Weld County CO	Local Co-ordinate Reference:	Well O Investment Properties 6Y-401
Project:	SEC.6-T6N-R65W	TVD Reference:	WELL @ 4792.0ft (RKB - 15')
Site:	O Investment Properties 6Y-HZ Pad Sec.6-T6N-R65W	MD Reference:	WELL @ 4792.0ft (RKB - 15')
Well:	O Investment Properties 6Y-401	North Reference:	True
Wellbore:	Wellbore #1	Survey Calculation Method:	Minimum Curvature
Design:	Wellbore #1	Database:	Landmark

Project	SEC.6-T6N-R65W, Weld County, Colorado		
Map System:	US State Plane 1983	System Datum:	Mean Sea Level
Geo Datum:	North American Datum 1983		Using Well Reference Point
Map Zone:	Colorado Northern Zone		Using geodetic scale factor

Site	O Investment Properties 6Y-HZ Pad Sec.6-T6N-R65W				
Site Position:		Northing:	1,430,039.28 ft	Latitude:	40.511090
From:	Lat/Long	Easting:	3,223,018.48 ft	Longitude:	-104.697920
Position Uncertainty:	0.0 ft	Slot Radius:	"	Grid Convergence:	0.52 °

Well	O Investment Properties 6Y-401					
Well Position	+N-S	0.0 ft	Northing:	1,430,039.82 ft	Latitude:	40.511090
	+E-W	0.0 ft	Easting:	3,223,079.65 ft	Longitude:	-104.697700
Position Uncertainty		0.0 ft	Wellhead Elevation:	ft	Ground Level:	4,777.0 ft

Wellbore	Wellbore #1				
Magnetics	Model Name	Sample Date	Declination (°)	Dip Angle (°)	Field Strength (nT)
	IGRF2010	10/23/2013	8.52	67.07	52,948

Design	Wellbore #1				
Audit Notes:					
Version:	1.0	Phase:	ACTUAL	Tie On Depth:	0.0
Vertical Section:	Depth From (TVD) (ft)	+N/-S (ft)	+E/-W (ft)	Direction (°)	
	7,182.0	0.0	0.0	1.15	

Survey Program	Date	11/11/2013			
From (ft)	To (ft)	Survey (Wellbore)	Tool Name	Description	
123.0	11,587.0	Survey #1 (Wellbore #1)	MWD	MWD - Standard	

Survey									
Measured Depth (ft)	Inclination (°)	Azimuth (°)	Vertical Depth (ft)	+N/-S (ft)	+E/-W (ft)	Vertical Section (ft)	Dogleg Rate (°/100ft)	Build Rate (°/100ft)	Turn Rate (°/100ft)
0.0	0.00	0.00	0.0	0.0	0.0	0.0	0.00	0.00	0.00
123.0	0.40	126.60	123.0	-0.3	0.3	-0.2	0.33	0.33	0.00
249.0	0.50	135.60	249.0	-0.9	1.1	-0.9	0.10	0.08	7.14
407.0	0.90	133.90	407.0	-2.3	2.5	-2.2	0.25	0.25	-1.08
565.0	1.10	104.10	565.0	-3.5	4.8	-3.4	0.35	0.13	-18.86
723.0	0.80	158.30	722.9	-4.9	6.7	-4.8	0.57	-0.19	34.30
885.0	1.00	172.70	884.9	-7.3	7.3	-7.2	0.19	0.12	8.89
973.0	1.10	159.30	972.9	-8.9	7.7	-8.7	0.30	0.11	-15.23
1,099.0	1.10	168.20	1,098.9	-11.2	8.4	-11.0	0.14	0.00	7.06
1,225.0	1.10	156.80	1,224.9	-13.5	9.1	-13.3	0.17	0.00	-9.05
1,350.0	2.90	181.10	1,349.8	-17.8	9.5	-17.6	1.56	1.44	19.44

Company:	PETROLEUM DEVELOPMENT CORP Weld County CO	Local Co-ordinate Reference:	Well O Investment Properties 6Y-401
Project:	SEC.6-T6N-R65W	TVD Reference:	WELL @ 4792.0ft (RKB - 15')
Site:	O Investment Properties 6Y-HZ Pad Sec.6-T6N-R65W	MD Reference:	WELL @ 4792.0ft (RKB - 15')
Well:	O Investment Properties 6Y-401	North Reference:	True
Wellbore:	Wellbore #1	Survey Calculation Method:	Minimum Curvature
Design:	Wellbore #1	Database:	Landmark

Survey									
Measured Depth (ft)	Inclination (°)	Azimuth (°)	Vertical Depth (ft)	+N/-S (ft)	+E/-W (ft)	Vertical Section (ft)	Dogleg Rate (°/100ft)	Build Rate (°/100ft)	Turn Rate (°/100ft)
1,472.0	2.60	173.00	1,471.6	-23.6	9.8	-23.4	0.40	-0.25	-6.64
1,594.0	2.50	171.00	1,593.5	-29.0	10.5	-28.8	0.11	-0.08	-1.64
1,716.0	4.20	173.20	1,715.3	-36.0	11.5	-35.8	1.40	1.39	1.80
1,869.0	2.60	173.30	1,868.0	-45.1	12.6	-44.8	1.05	-1.05	0.07
1,960.0	4.50	178.20	1,958.9	-50.7	12.9	-50.4	2.11	2.09	5.38
2,082.0	5.00	176.00	2,080.4	-60.8	13.4	-60.5	0.44	0.41	-1.80
2,204.0	5.60	164.40	2,201.9	-71.8	15.4	-71.5	1.00	0.49	-9.51
2,326.0	5.90	172.40	2,323.3	-83.7	17.8	-83.4	0.70	0.25	6.56
2,447.0	5.00	163.10	2,443.8	-95.0	20.2	-94.5	1.04	-0.74	-7.69
2,573.0	5.90	168.90	2,569.2	-106.6	23.0	-106.1	0.84	0.71	4.60
2,700.0	6.00	171.70	2,695.5	-119.5	25.2	-119.0	0.24	0.08	2.20
2,826.0	7.10	169.60	2,820.7	-133.7	27.6	-133.1	0.89	0.87	-1.67
2,953.0	7.70	177.00	2,946.6	-149.9	29.5	-149.3	0.89	0.47	5.83
3,112.0	6.60	169.60	3,104.4	-169.6	31.7	-168.9	0.90	-0.69	-4.65
3,271.0	7.20	180.00	3,262.2	-188.5	33.3	-187.8	0.87	0.38	6.54
3,430.0	5.50	174.20	3,420.3	-206.1	34.1	-205.3	1.14	-1.07	-3.65
3,589.0	4.50	161.00	3,578.7	-219.5	36.9	-218.7	0.95	-0.63	-8.30
3,716.0	5.20	166.60	3,705.2	-229.8	39.8	-229.0	0.66	0.55	4.41
3,843.0	7.20	164.90	3,831.5	-243.1	43.3	-242.2	1.58	1.57	-1.34
3,970.0	9.70	167.50	3,957.1	-261.3	47.6	-260.2	1.99	1.97	2.05
4,129.0	10.30	167.40	4,113.7	-288.2	53.6	-287.1	0.38	0.38	-0.06
4,288.0	8.20	169.60	4,270.6	-313.2	58.8	-312.0	1.34	-1.32	1.38
4,446.0	6.20	169.80	4,427.3	-332.7	62.3	-331.4	1.27	-1.27	0.13
4,605.0	7.10	176.00	4,585.3	-351.0	64.5	-349.6	0.72	0.57	3.90
4,763.0	7.70	172.80	4,741.9	-371.2	66.5	-369.8	0.46	0.38	-2.03
4,922.0	6.90	177.50	4,899.6	-391.3	68.3	-389.9	0.63	-0.50	2.96
5,080.0	5.80	179.50	5,056.7	-408.8	68.8	-407.3	0.71	-0.70	1.27
5,238.0	5.60	164.00	5,213.9	-424.2	71.0	-422.7	0.98	-0.13	-9.81
5,397.0	3.50	153.30	5,372.4	-436.0	75.3	-434.4	1.42	-1.32	-6.73
5,556.0	1.50	142.40	5,531.2	-442.0	78.7	-440.3	1.29	-1.26	-6.86
5,714.0	1.10	137.50	5,689.2	-444.7	81.0	-443.0	0.26	-0.25	-3.10
5,873.0	0.60	121.30	5,848.2	-446.3	82.8	-444.5	0.35	-0.31	-10.19
6,032.0	0.20	86.50	6,007.2	-446.7	83.8	-444.9	0.28	-0.25	-21.89
6,190.0	0.40	314.80	6,165.2	-446.3	83.6	-444.5	0.35	0.13	-83.35
6,349.0	0.40	337.90	6,324.2	-445.4	83.0	-443.6	0.10	0.00	14.53
6,381.0	0.50	354.60	6,356.2	-445.1	83.0	-443.4	0.51	0.31	52.19
6,412.0	2.50	0.40	6,387.2	-444.3	83.0	-442.6	6.46	6.45	18.71
6,444.0	5.00	12.10	6,419.1	-442.3	83.3	-440.5	8.13	7.81	36.56
6,476.0	7.50	10.60	6,450.9	-438.8	84.0	-437.1	7.83	7.81	-4.69
6,508.0	9.90	3.20	6,482.5	-434.0	84.5	-432.3	8.26	7.50	-23.13
6,539.0	12.00	355.60	6,513.0	-428.2	84.4	-426.4	8.21	6.77	-24.52
6,571.0	14.30	353.30	6,544.1	-420.9	83.7	-419.2	7.37	7.19	-7.19
6,603.0	16.00	351.90	6,575.0	-412.6	82.6	-410.9	5.43	5.31	-4.38
6,634.0	17.20	353.50	6,604.7	-403.9	81.5	-402.1	4.14	3.87	5.16
6,666.0	18.60	354.70	6,635.2	-394.1	80.5	-392.4	4.52	4.38	3.75
6,698.0	20.80	358.10	6,665.3	-383.3	79.8	-381.6	7.75	6.88	10.63
6,730.0	22.90	0.40	6,695.0	-371.4	79.7	-369.7	7.09	6.56	7.19
6,762.0	24.50	359.30	6,724.3	-358.5	79.6	-356.9	5.19	5.00	-3.44
6,794.0	26.70	359.30	6,753.1	-344.7	79.5	-343.1	6.88	6.88	0.00
6,825.0	29.40	359.00	6,780.5	-330.1	79.2	-328.5	8.72	8.71	-0.97
6,857.0	31.80	359.70	6,808.0	-313.9	79.1	-312.2	7.58	7.50	2.19
6,889.0	34.20	1.10	6,834.9	-296.4	79.2	-294.8	7.87	7.50	4.38
6,920.0	37.20	1.60	6,860.1	-278.3	79.6	-276.7	9.72	9.68	1.61

Company:	PETROLEUM DEVELOPMENT CORP Weld County CO	Local Co-ordinate Reference:	Well O Investment Properties 6Y-401
Project:	SEC.6-T6N-R65W	TVD Reference:	WELL @ 4792.0ft (RKB - 15')
Site:	O Investment Properties 6Y-HZ Pad Sec.6-T6N-R65W	MD Reference:	WELL @ 4792.0ft (RKB - 15')
Well:	O Investment Properties 6Y-401	North Reference:	True
Wellbore:	Wellbore #1	Survey Calculation Method:	Minimum Curvature
Design:	Wellbore #1	Database:	Landmark

Survey									
Measured Depth (ft)	Inclination (°)	Azimuth (°)	Vertical Depth (ft)	+N/-S (ft)	+E/-W (ft)	Vertical Section (ft)	Dogleg Rate (°/100ft)	Build Rate (°/100ft)	Turn Rate (°/100ft)
6,952.0	40.40	1.40	6,885.0	-258.3	80.1	-256.6	10.01	10.00	-0.63
6,984.0	42.70	0.40	6,908.9	-237.1	80.5	-235.4	7.48	7.19	-3.13
7,016.0	44.60	359.80	6,932.1	-215.0	80.5	-213.3	6.08	5.94	-1.88
7,047.0	46.90	358.60	6,953.7	-192.8	80.2	-191.2	7.92	7.42	-3.87
7,079.0	49.10	358.80	6,975.1	-169.0	79.7	-167.4	6.89	6.88	0.63
7,111.0	52.70	359.30	6,995.3	-144.2	79.2	-142.6	11.32	11.25	1.56
7,142.0	56.30	0.00	7,013.3	-119.0	79.1	-117.4	11.76	11.61	2.26
7,174.0	59.60	0.00	7,030.3	-91.8	79.1	-90.2	10.31	10.31	0.00
7,206.0	61.90	359.70	7,045.9	-63.9	79.0	-62.3	7.23	7.19	-0.94
7,238.0	63.80	0.50	7,060.5	-35.5	79.1	-33.9	6.34	5.94	2.50
7,269.0	65.10	1.60	7,073.9	-7.5	79.6	-5.9	5.28	4.19	3.55
7,301.0	67.40	1.60	7,086.8	21.8	80.4	23.4	7.19	7.19	0.00
7,333.0	70.30	1.10	7,098.3	51.6	81.1	53.2	9.18	9.06	-1.56
7,365.0	73.90	0.90	7,108.2	82.1	81.6	83.7	11.27	11.25	-0.63
7,396.0	76.30	0.40	7,116.1	112.0	82.0	113.6	7.90	7.74	-1.61
7,428.0	79.00	0.00	7,123.0	143.3	82.1	144.9	8.53	8.44	-1.25
7,463.0	82.30	359.80	7,128.7	177.8	82.0	179.4	9.45	9.43	-0.57
7,491.0	83.80	0.00	7,132.0	205.6	82.0	207.2	5.40	5.36	0.71
7,500.0	83.89	0.09	7,133.0	214.5	82.0	216.1	1.41	1.00	1.00
7"									
7,521.0	84.10	0.30	7,135.2	235.4	82.1	237.0	1.41	1.00	1.00
7,552.0	85.10	0.30	7,138.1	266.3	82.2	267.9	3.23	3.23	0.00
7,582.0	86.10	0.80	7,140.4	296.2	82.5	297.8	3.72	3.33	1.67
7,612.0	86.20	0.30	7,142.4	326.1	82.8	327.7	1.70	0.33	-1.67
7,642.0	86.50	0.10	7,144.4	356.1	82.9	357.7	1.20	1.00	-0.67
7,673.0	87.00	0.10	7,146.1	387.0	82.9	388.6	1.61	1.61	0.00
7,705.0	87.10	0.10	7,147.8	419.0	83.0	420.6	0.31	0.31	0.00
7,737.0	86.90	359.40	7,149.4	450.9	82.9	452.5	2.27	-0.63	-2.19
7,769.0	87.50	359.40	7,151.0	482.9	82.5	484.4	1.88	1.88	0.00
7,800.0	88.10	0.10	7,152.2	513.9	82.4	515.4	2.97	1.94	2.26
7,832.0	88.50	0.30	7,153.1	545.8	82.5	547.4	1.40	1.25	0.63
7,864.0	88.80	0.40	7,153.9	577.8	82.7	579.4	0.99	0.94	0.31
7,895.0	89.30	0.60	7,154.4	608.8	83.0	610.4	1.74	1.61	0.65
7,927.0	89.00	1.00	7,154.9	640.8	83.4	642.4	1.56	-0.94	1.25
7,959.0	89.00	0.40	7,155.4	672.8	83.8	674.4	1.87	0.00	-1.88
7,990.0	89.50	0.10	7,155.8	703.8	83.9	705.4	1.88	1.61	-0.97
8,022.0	89.80	0.30	7,156.0	735.8	84.1	737.4	1.13	0.94	0.63
8,054.0	90.00	0.10	7,156.1	767.8	84.2	769.3	0.88	0.63	-0.63
8,086.0	90.00	0.10	7,156.1	799.8	84.2	801.3	0.00	0.00	0.00
8,118.0	90.30	0.40	7,156.0	831.8	84.4	833.3	1.33	0.94	0.94
8,149.0	90.30	0.40	7,155.8	862.8	84.6	864.3	0.00	0.00	0.00
8,182.0	90.20	0.40	7,155.7	895.8	84.8	897.3	0.30	-0.30	0.00
8,213.0	90.10	0.40	7,155.6	926.8	85.0	928.3	0.32	-0.32	0.00
8,245.0	90.20	359.90	7,155.5	958.8	85.1	960.3	1.59	0.31	-1.56
8,277.0	90.50	0.30	7,155.3	990.8	85.2	992.3	1.56	0.94	1.25
8,309.0	90.60	359.90	7,155.0	1,022.8	85.2	1,024.3	1.29	0.31	-1.25
8,341.0	90.20	359.40	7,154.8	1,054.8	85.0	1,056.3	2.00	-1.25	-1.56
8,373.0	90.20	359.40	7,154.7	1,086.8	84.7	1,088.3	0.00	0.00	0.00
8,405.0	90.20	359.60	7,154.6	1,118.8	84.4	1,120.3	0.62	0.00	0.63
8,436.0	90.30	359.20	7,154.5	1,149.8	84.1	1,151.3	1.33	0.32	-1.29
8,468.0	90.30	359.00	7,154.3	1,181.8	83.6	1,183.2	0.62	0.00	-0.63
8,500.0	90.00	358.70	7,154.2	1,213.8	82.9	1,215.2	1.33	-0.94	-0.94

Company:	PETROLEUM DEVELOPMENT CORP Weld County CO	Local Co-ordinate Reference:	Well O Investment Properties 6Y-401
Project:	SEC.6-T6N-R65W	TVD Reference:	WELL @ 4792.0ft (RKB - 15')
Site:	O Investment Properties 6Y-HZ Pad Sec.6-T6N-R65W	MD Reference:	WELL @ 4792.0ft (RKB - 15')
Well:	O Investment Properties 6Y-401	North Reference:	True
Wellbore:	Wellbore #1	Survey Calculation Method:	Minimum Curvature
Design:	Wellbore #1	Database:	Landmark

Survey										
Measured Depth (ft)	Inclination (°)	Azimuth (°)	Vertical Depth (ft)	+N-S (ft)	+E-W (ft)	Vertical Section (ft)	Dogleg Rate (°/100ft)	Build Rate (°/100ft)	Turn Rate (°/100ft)	
8,532.0	88.90	358.90	7,154.5	1,245.8	82.3	1,247.2	3.49	-3.44	0.63	
8,563.0	87.80	359.20	7,155.4	1,276.8	81.8	1,278.1	3.68	-3.55	0.97	
8,595.0	87.60	358.70	7,156.7	1,308.7	81.2	1,310.1	1.68	-0.63	-1.56	
8,627.0	87.70	358.50	7,158.0	1,340.7	80.4	1,342.0	0.70	0.31	-0.63	
8,659.0	87.10	359.00	7,159.4	1,372.7	79.7	1,374.0	2.44	-1.88	1.56	
8,691.0	86.80	359.70	7,161.2	1,404.6	79.3	1,405.9	2.38	-0.94	2.19	
8,723.0	86.60	0.80	7,163.0	1,436.6	79.5	1,437.9	3.49	-0.63	3.44	
8,754.0	86.80	0.80	7,164.8	1,467.5	79.9	1,468.8	0.65	0.65	0.00	
8,786.0	87.80	1.10	7,166.3	1,499.5	80.4	1,500.8	3.26	3.13	0.94	
8,818.0	89.40	1.50	7,167.1	1,531.4	81.2	1,532.8	5.15	5.00	1.25	
8,849.0	90.00	1.50	7,167.2	1,562.4	82.0	1,563.8	1.94	1.94	0.00	
8,881.0	89.80	1.10	7,167.3	1,594.4	82.7	1,595.8	1.40	-0.63	-1.25	
8,913.0	89.70	1.50	7,167.4	1,626.4	83.4	1,627.8	1.29	-0.31	1.25	
8,945.0	90.00	2.00	7,167.5	1,658.4	84.4	1,659.8	1.82	0.94	1.56	
8,976.0	90.50	2.70	7,167.4	1,689.4	85.7	1,690.7	2.77	1.61	2.26	
9,008.0	90.40	2.00	7,167.1	1,721.3	87.0	1,722.7	2.21	-0.31	-2.19	
9,040.0	90.20	2.20	7,167.0	1,753.3	88.2	1,754.7	0.88	-0.63	0.63	
9,072.0	90.80	1.50	7,166.7	1,785.3	89.2	1,786.7	2.88	1.88	-2.19	
9,103.0	91.60	1.10	7,166.0	1,816.3	89.9	1,817.7	2.89	2.58	-1.29	
9,135.0	92.20	0.80	7,165.0	1,848.3	90.4	1,849.7	2.10	1.88	-0.94	
9,167.0	91.80	0.40	7,163.8	1,880.2	90.8	1,881.7	1.77	-1.25	-1.25	
9,198.0	91.10	359.40	7,163.1	1,911.2	90.7	1,912.7	3.94	-2.26	-3.23	
9,230.0	90.60	358.50	7,162.6	1,943.2	90.1	1,944.6	3.22	-1.56	-2.81	
9,262.0	90.00	358.50	7,162.4	1,975.2	89.3	1,976.6	1.88	-1.88	0.00	
9,293.0	90.00	358.70	7,162.4	2,006.2	88.5	2,007.6	0.65	0.00	0.65	
9,325.0	89.60	358.50	7,162.5	2,038.2	87.7	2,039.5	1.40	-1.25	-0.63	
9,357.0	89.80	358.00	7,162.7	2,070.2	86.8	2,071.5	1.68	0.63	-1.56	
9,389.0	90.20	358.00	7,162.7	2,102.2	85.6	2,103.5	1.25	1.25	0.00	
9,421.0	89.40	358.90	7,162.8	2,134.1	84.8	2,135.4	3.76	-2.50	2.81	
9,452.0	88.70	359.70	7,163.3	2,165.1	84.4	2,166.4	3.43	-2.26	2.58	
9,485.0	89.30	359.70	7,163.9	2,198.1	84.2	2,199.4	1.82	1.82	0.00	
9,517.0	90.20	359.90	7,164.0	2,230.1	84.1	2,231.4	2.88	2.81	0.63	
9,549.0	90.50	0.40	7,163.8	2,262.1	84.2	2,263.4	1.82	0.94	1.56	
9,581.0	90.70	0.40	7,163.5	2,294.1	84.4	2,295.4	0.63	0.63	0.00	
9,612.0	90.00	359.70	7,163.3	2,325.1	84.5	2,326.4	3.19	-2.26	-2.26	
9,644.0	90.70	359.40	7,163.1	2,357.1	84.2	2,358.3	2.38	2.19	-0.94	
9,676.0	91.30	358.90	7,162.6	2,389.1	83.7	2,390.3	2.44	1.88	-1.56	
9,708.0	90.10	358.90	7,162.2	2,421.1	83.1	2,422.3	3.75	-3.75	0.00	
9,740.0	89.00	358.30	7,162.4	2,453.1	82.3	2,454.3	3.92	-3.44	-1.88	
9,771.0	88.50	358.30	7,163.1	2,484.1	81.4	2,485.2	1.61	-1.61	0.00	
9,803.0	88.10	359.00	7,164.1	2,516.1	80.7	2,517.2	2.52	-1.25	2.19	
9,835.0	88.50	359.70	7,165.0	2,548.0	80.3	2,549.1	2.52	1.25	2.19	
9,867.0	88.90	0.10	7,165.7	2,580.0	80.2	2,581.1	1.77	1.25	1.25	
9,898.0	88.90	0.30	7,166.3	2,611.0	80.3	2,612.1	0.65	0.00	0.65	
9,930.0	89.50	0.30	7,166.8	2,643.0	80.5	2,644.1	1.88	1.88	0.00	
9,961.0	89.60	359.90	7,167.0	2,674.0	80.6	2,675.1	1.33	0.32	-1.29	
9,993.0	88.80	359.40	7,167.5	2,706.0	80.4	2,707.1	2.95	-2.50	-1.56	
10,025.0	88.60	359.20	7,168.2	2,738.0	80.0	2,739.1	0.88	-0.63	-0.63	
10,056.0	88.60	358.70	7,168.9	2,769.0	79.4	2,770.0	1.61	0.00	-1.61	
10,088.0	87.60	358.30	7,170.0	2,801.0	78.6	2,802.0	3.37	-3.13	-1.25	
10,120.0	87.30	359.60	7,171.4	2,832.9	78.0	2,833.9	4.17	-0.94	4.06	
10,150.0	87.70	1.00	7,172.7	2,862.9	78.1	2,863.9	4.85	1.33	4.67	
10,183.0	87.80	2.70	7,174.0	2,895.8	79.2	2,896.9	5.16	0.30	5.15	

Company:	PETROLEUM DEVELOPMENT CORP Weld County CO	Local Co-ordinate Reference:	Well O Investment Properties 6Y-401
Project:	SEC.6-T6N-R65W	TVD Reference:	WELL @ 4792.0ft (RKB - 15')
Site:	O Investment Properties 6Y-HZ Pad Sec.6-T6N-R65W	MD Reference:	WELL @ 4792.0ft (RKB - 15')
Well:	O Investment Properties 6Y-401	North Reference:	True
Wellbore:	Wellbore #1	Survey Calculation Method:	Minimum Curvature
Design:	Wellbore #1	Database:	Landmark

Survey										
Measured Depth (ft)	Inclination (°)	Azimuth (°)	Vertical Depth (ft)	+N/-S (ft)	+E/-W (ft)	Vertical Section (ft)	Dogleg Rate (°/100ft)	Build Rate (°/100ft)	Turn Rate (°/100ft)	
10,215.0	88.20	3.20	7,175.2	2,927.8	80.9	2,928.8	2.00	1.25	1.56	
10,247.0	88.20	4.30	7,176.2	2,959.7	82.9	2,960.8	3.44	0.00	3.44	
10,278.0	89.50	4.10	7,176.8	2,990.6	85.2	2,991.7	4.24	4.19	-0.65	
10,310.0	90.10	4.50	7,176.9	3,022.5	87.6	3,023.7	2.25	1.88	1.25	
10,342.0	91.00	4.80	7,176.6	3,054.4	90.2	3,055.6	2.96	2.81	0.94	
10,373.0	91.60	4.50	7,175.9	3,085.3	92.7	3,086.5	2.16	1.94	-0.97	
10,405.0	91.50	2.70	7,175.0	3,117.2	94.7	3,118.5	5.63	-0.31	-5.63	
10,437.0	91.70	1.70	7,174.1	3,149.2	96.0	3,150.5	3.19	0.63	-3.13	
10,469.0	91.80	1.10	7,173.1	3,181.2	96.7	3,182.5	1.90	0.31	-1.88	
10,500.0	91.00	0.60	7,172.4	3,212.2	97.2	3,213.5	3.04	-2.58	-1.61	
10,532.0	89.60	359.60	7,172.2	3,244.2	97.3	3,245.4	5.38	-4.38	-3.13	
10,564.0	89.30	359.40	7,172.5	3,276.1	97.0	3,277.4	1.13	-0.94	-0.63	
10,596.0	89.50	359.40	7,172.9	3,308.1	96.6	3,309.4	0.63	0.63	0.00	
10,627.0	89.70	359.70	7,173.1	3,339.1	96.4	3,340.4	1.16	0.65	0.97	
10,659.0	90.00	0.10	7,173.2	3,371.1	96.3	3,372.4	1.56	0.94	1.25	
10,690.0	89.30	359.90	7,173.4	3,402.1	96.3	3,403.4	2.35	-2.26	-0.65	
10,722.0	89.40	359.90	7,173.7	3,434.1	96.3	3,435.4	0.31	0.31	0.00	
10,754.0	89.30	359.60	7,174.1	3,466.1	96.1	3,467.4	0.99	-0.31	-0.94	
10,786.0	89.30	359.00	7,174.5	3,498.1	95.8	3,499.3	1.87	0.00	-1.88	
10,817.0	89.40	359.20	7,174.8	3,529.1	95.3	3,530.3	0.72	0.32	0.65	
10,849.0	89.80	359.70	7,175.0	3,561.1	95.0	3,562.3	2.00	1.25	1.56	
10,881.0	90.00	0.40	7,175.1	3,593.1	95.0	3,594.3	2.28	0.63	2.19	
10,912.0	88.70	359.60	7,175.5	3,624.1	95.0	3,625.3	4.92	-4.19	-2.58	
10,944.0	88.90	359.70	7,176.1	3,656.1	94.8	3,657.3	0.70	0.63	0.31	
10,976.0	88.70	359.70	7,176.8	3,688.1	94.6	3,689.3	0.63	-0.63	0.00	
11,007.0	88.50	359.60	7,177.5	3,719.1	94.4	3,720.2	0.72	-0.65	-0.32	
11,039.0	88.20	359.20	7,178.5	3,751.1	94.1	3,752.2	1.56	-0.94	-1.25	
11,071.0	88.20	358.70	7,179.5	3,783.1	93.5	3,784.2	1.56	0.00	-1.56	
11,103.0	88.70	359.20	7,180.3	3,815.0	92.9	3,816.1	2.21	1.56	1.56	
11,135.0	89.30	359.90	7,180.9	3,847.0	92.7	3,848.1	2.88	1.88	2.19	
11,166.0	89.40	0.10	7,181.3	3,878.0	92.7	3,879.1	0.72	0.32	0.65	
11,198.0	89.30	0.10	7,181.6	3,910.0	92.7	3,911.1	0.31	-0.31	0.00	
11,230.0	89.40	0.60	7,182.0	3,942.0	92.9	3,943.1	1.59	0.31	1.56	
11,261.0	90.50	0.60	7,182.0	3,973.0	93.3	3,974.1	3.55	3.55	0.00	
11,293.0	91.00	0.40	7,181.6	4,005.0	93.5	4,006.1	1.68	1.56	-0.63	
11,324.0	91.20	0.40	7,181.0	4,036.0	93.8	4,037.1	0.65	0.65	0.00	
11,356.0	91.30	0.10	7,180.3	4,068.0	93.9	4,069.1	0.99	0.31	-0.94	
11,388.0	91.40	359.60	7,179.5	4,100.0	93.8	4,101.1	1.59	0.31	-1.56	
11,420.0	90.30	359.00	7,179.1	4,132.0	93.4	4,133.0	3.92	-3.44	-1.88	
11,451.0	89.80	358.50	7,179.0	4,163.0	92.7	4,164.0	2.28	-1.61	-1.61	
11,483.0	89.50	358.70	7,179.2	4,195.0	92.0	4,196.0	1.13	-0.94	0.63	
11,532.0	89.50	357.80	7,179.7	4,243.9	90.5	4,244.9	1.84	0.00	-1.84	
11,587.0	89.50	357.80	7,180.1	4,298.9	88.4	4,299.8	0.00	0.00	0.00	
BHL 500'FNL, 150'FEL										

Casing Points					
Measured Depth (ft)	Vertical Depth (ft)	Name	Casing Diameter (")	Hole Diameter (")	
7,500.0	7,133.0	7"	7	7-1/2	

Company:	PETROLEUM DEVELOPMENT CORP Weld County CO	Local Co-ordinate Reference:	Well O Investment Properties 6Y-401
Project:	SEC.6-T6N-R65W	TVD Reference:	WELL @ 4792.0ft (RKB - 15')
Site:	O Investment Properties 6Y-HZ Pad Sec.6-T6N-R65W	MD Reference:	WELL @ 4792.0ft (RKB - 15')
Well:	O Investment Properties 6Y-401	North Reference:	True
Wellbore:	Wellbore #1	Survey Calculation Method:	Minimum Curvature
Design:	Wellbore #1	Database:	Landmark

Checked By: _____	Approved By: _____	Date: _____
-------------------	--------------------	-------------