

PETROLEUM DEVELOPMENT CORP Weld County CO

Well Name: **O Investment Properties 6Y-241**

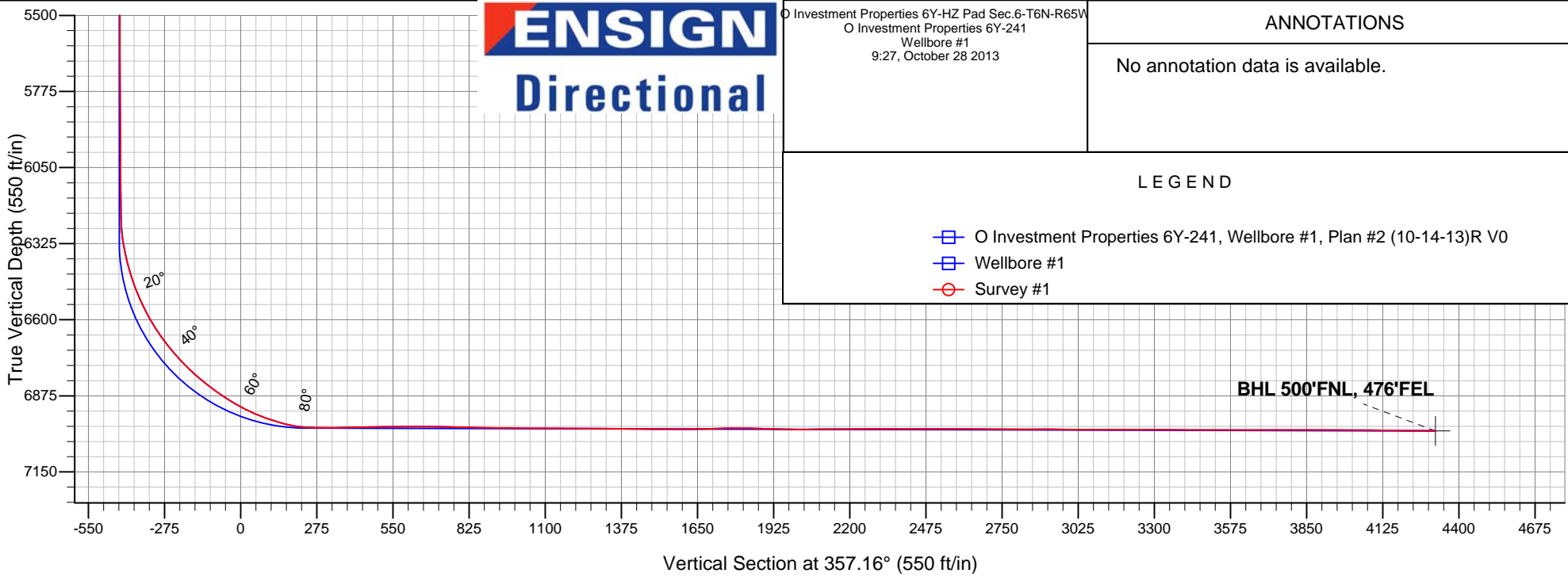
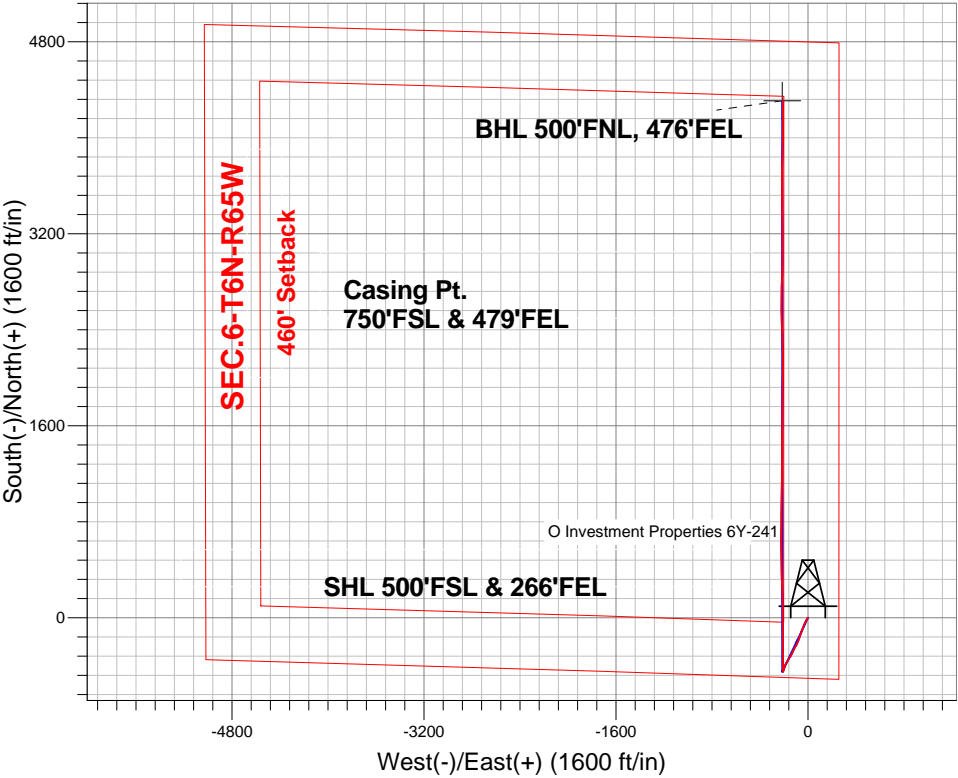
Surface Location: O Investment Properties 6Y-HZ Pad Sec.6-T6N-R65W
North American Datum 1983 , US State Plane 1983 , Colorado Northern Zone

Ground Elevation: 4777.0

+N/-S	+E/-W	Northing	Easting	Latitude	Longitude	Slot
0.0	0.0	1430039.54	3223049.07	40.511090	-104.697810	
RKB - 15' WELL @ 4792.0ft (RKB - 15')						

FINAL SURVEY

Projected Bottom Hole Location
11439'MD 7001'TVD 4310'N & 210'W of SHL
89.4 degree Incl @ 358.9 degree AZM





PETROLEUM DEVELOPMENT CORP Weld County CO

SEC.6-T6N-R65W

O Investment Properties 6Y-HZ Pad Sec.6-T6N-R65W

O Investment Properties 6Y-241

Wellbore #1

Survey: Survey #1

Standard Survey Report

28 October, 2013

Company:	PETROLEUM DEVELOPMENT CORP Weld County CO	Local Co-ordinate Reference:	Well O Investment Properties 6Y-241
Project:	SEC.6-T6N-R65W	TVD Reference:	WELL @ 4792.0ft (RKB - 15')
Site:	O Investment Properties 6Y-HZ Pad Sec.6-T6N-R65W	MD Reference:	WELL @ 4792.0ft (RKB - 15')
Well:	O Investment Properties 6Y-241	North Reference:	True
Wellbore:	Wellbore #1	Survey Calculation Method:	Minimum Curvature
Design:	Wellbore #1	Database:	Landmark

Project	SEC.6-T6N-R65W, Weld County, Colorado		
Map System:	US State Plane 1983	System Datum:	Mean Sea Level
Geo Datum:	North American Datum 1983		Using Well Reference Point
Map Zone:	Colorado Northern Zone		Using geodetic scale factor

Site	O Investment Properties 6Y-HZ Pad Sec.6-T6N-R65W				
Site Position:		Northing:	1,430,039.28 ft	Latitude:	40.511090
From:	Lat/Long	Easting:	3,223,018.48 ft	Longitude:	-104.697920
Position Uncertainty:	0.0 ft	Slot Radius:	"	Grid Convergence:	0.52 °

Well	O Investment Properties 6Y-241					
Well Position	+N-S	0.0 ft	Northing:	1,430,039.54 ft	Latitude:	40.511090
	+E-W	0.0 ft	Easting:	3,223,049.07 ft	Longitude:	-104.697810
Position Uncertainty		0.0 ft	Wellhead Elevation:	ft	Ground Level:	4,777.0 ft

Wellbore	Wellbore #1				
Magnetics	Model Name	Sample Date	Declination (°)	Dip Angle (°)	Field Strength (nT)
	IGRF2010	10/14/2013	8.52	67.07	52,951

Design	Wellbore #1				
Audit Notes:					
Version:	1.0	Phase:	ACTUAL	Tie On Depth:	0.0
Vertical Section:	Depth From (TVD) (ft)	+N-S (ft)	+E-W (ft)	Direction (°)	
	0.0	0.0	0.0	357.16	

Survey Program	Date	10/28/2013			
From (ft)	To (ft)	Survey (Wellbore)	Tool Name	Description	
130.0	11,439.0	Survey #1 (Wellbore #1)	MWD	MWD - Standard	

Survey									
Measured Depth (ft)	Inclination (°)	Azimuth (°)	Vertical Depth (ft)	+N-S (ft)	+E-W (ft)	Vertical Section (ft)	Dogleg Rate (°/100ft)	Build Rate (°/100ft)	Turn Rate (°/100ft)
0.0	0.00	0.00	0.0	0.0	0.0	0.0	0.00	0.00	0.00
130.0	0.10	185.70	130.0	-0.1	0.0	-0.1	0.08	0.08	0.00
217.0	0.30	199.80	217.0	-0.4	-0.1	-0.4	0.24	0.23	16.21
340.0	0.30	162.90	340.0	-1.0	-0.1	-1.0	0.15	0.00	-30.00
467.0	0.30	344.80	467.0	-1.0	-0.1	-1.0	0.47	0.00	-140.24
561.0	0.50	224.70	561.0	-1.1	-0.5	-1.0	0.75	0.21	-127.77
656.0	2.40	221.20	656.0	-2.9	-2.1	-2.8	2.00	2.00	-3.68
752.0	3.50	217.20	751.8	-6.7	-5.2	-6.4	1.17	1.15	-4.17
847.0	5.10	205.40	846.6	-12.8	-8.7	-12.4	1.92	1.68	-12.42
888.0	5.70	203.80	887.4	-16.3	-10.3	-15.8	1.51	1.46	-3.90
1,005.0	6.60	205.30	1,003.7	-27.7	-15.5	-26.9	0.78	0.77	1.28

Company:	PETROLEUM DEVELOPMENT CORP Weld County CO	Local Co-ordinate Reference:	Well O Investment Properties 6Y-241
Project:	SEC.6-T6N-R65W	TVD Reference:	WELL @ 4792.0ft (RKB - 15')
Site:	O Investment Properties 6Y-HZ Pad Sec.6-T6N-R65W	MD Reference:	WELL @ 4792.0ft (RKB - 15')
Well:	O Investment Properties 6Y-241	North Reference:	True
Wellbore:	Wellbore #1	Survey Calculation Method:	Minimum Curvature
Design:	Wellbore #1	Database:	Landmark

Survey									
Measured Depth (ft)	Inclination (°)	Azimuth (°)	Vertical Depth (ft)	+N-S (ft)	+E-W (ft)	Vertical Section (ft)	Dogleg Rate (°/100ft)	Build Rate (°/100ft)	Turn Rate (°/100ft)
1,130.0	7.00	204.10	1,127.8	-41.2	-21.7	-40.1	0.34	0.32	-0.96
1,256.0	6.70	208.10	1,252.9	-54.7	-28.3	-53.2	0.45	-0.24	3.17
1,409.0	7.70	204.30	1,404.7	-71.9	-36.7	-70.0	0.72	0.65	-2.48
1,561.0	7.60	204.60	1,555.4	-90.3	-45.1	-88.0	0.07	-0.07	0.20
1,713.0	6.50	198.50	1,706.2	-107.6	-52.0	-104.9	0.87	-0.72	-4.01
1,864.0	6.30	195.70	1,856.3	-123.7	-57.0	-120.7	0.25	-0.13	-1.85
2,016.0	6.50	197.90	2,007.3	-139.9	-61.9	-136.7	0.21	0.13	1.45
2,169.0	6.20	193.90	2,159.4	-156.2	-66.5	-152.7	0.35	-0.20	-2.61
2,321.0	6.30	207.10	2,310.5	-171.6	-72.3	-167.8	0.95	0.07	8.68
2,472.0	5.40	198.60	2,460.7	-185.7	-78.3	-181.6	0.83	-0.60	-5.63
2,630.0	5.50	201.50	2,618.0	-199.8	-83.5	-195.4	0.19	0.06	1.84
2,789.0	6.20	208.30	2,776.2	-214.4	-90.3	-209.7	0.62	0.44	4.28
2,946.0	6.10	210.10	2,932.3	-229.1	-98.6	-223.9	0.14	-0.06	1.15
3,104.0	5.50	210.80	3,089.5	-242.9	-106.6	-237.3	0.38	-0.38	0.44
3,263.0	6.40	208.70	3,247.6	-257.2	-114.8	-251.2	0.58	0.57	-1.32
3,422.0	5.60	204.80	3,405.7	-272.0	-122.3	-265.6	0.56	-0.50	-2.45
3,581.0	6.20	201.10	3,563.9	-287.0	-128.7	-280.3	0.45	0.38	-2.33
3,739.0	6.80	203.90	3,720.9	-303.6	-135.5	-296.5	0.43	0.38	1.77
3,897.0	7.10	213.80	3,877.7	-320.2	-144.7	-312.6	0.78	0.19	6.27
4,055.0	7.80	210.80	4,034.4	-337.5	-155.7	-329.4	0.51	0.44	-1.90
4,214.0	7.10	210.20	4,192.0	-355.3	-166.1	-346.6	0.44	-0.44	-0.38
4,404.0	5.90	211.50	4,380.8	-373.8	-177.1	-364.5	0.64	-0.63	0.68
4,562.0	4.70	210.80	4,538.1	-386.3	-184.7	-376.6	0.76	-0.76	-0.44
4,720.0	5.50	201.30	4,695.5	-398.9	-190.8	-388.9	0.73	0.51	-6.01
4,878.0	5.50	199.50	4,852.8	-413.1	-196.0	-402.8	0.11	0.00	-1.14
5,037.0	4.20	195.10	5,011.2	-425.9	-200.1	-415.4	0.85	-0.82	-2.77
5,195.0	3.90	201.10	5,168.8	-436.5	-203.5	-425.8	0.33	-0.19	3.80
5,354.0	2.00	201.80	5,327.6	-444.1	-206.5	-433.3	1.20	-1.19	0.44
5,513.0	0.40	211.80	5,486.6	-447.1	-207.8	-436.3	1.01	-1.01	6.29
5,671.0	0.20	36.40	5,644.6	-447.4	-208.0	-436.5	0.38	-0.13	-111.01
5,829.0	0.40	25.30	5,802.6	-446.7	-207.6	-435.8	0.13	0.13	-7.03
5,987.0	0.60	38.50	5,960.6	-445.5	-206.8	-434.7	0.15	0.13	8.35
6,146.0	0.60	35.30	6,119.5	-444.2	-205.8	-433.4	0.02	0.00	-2.01
6,209.0	0.60	36.40	6,182.5	-443.7	-205.4	-432.9	0.02	0.00	1.75
6,241.0	0.50	35.00	6,214.5	-443.4	-205.2	-432.7	0.32	-0.31	-4.38
6,273.0	2.00	351.40	6,246.5	-442.7	-205.3	-432.0	5.23	4.69	-136.25
6,305.0	5.10	350.30	6,278.5	-440.8	-205.6	-430.0	9.69	9.69	-3.44
6,338.0	8.30	352.60	6,311.2	-437.0	-206.1	-426.2	9.73	9.70	6.97
6,368.0	11.10	354.90	6,340.8	-432.0	-206.7	-421.2	9.42	9.33	7.67
6,400.0	12.90	357.70	6,372.1	-425.3	-207.1	-414.5	5.91	5.63	8.75
6,431.0	14.90	358.80	6,402.2	-417.9	-207.3	-407.1	6.51	6.45	3.55
6,463.0	16.90	359.30	6,433.0	-409.1	-207.4	-398.3	6.26	6.25	1.56
6,495.0	18.80	359.10	6,463.4	-399.3	-207.6	-388.5	5.94	5.94	-0.63
6,526.0	21.40	358.40	6,492.5	-388.7	-207.8	-377.9	8.42	8.39	-2.26
6,558.0	23.80	357.70	6,522.1	-376.4	-208.2	-365.6	7.55	7.50	-2.19
6,590.0	25.90	357.90	6,551.1	-362.9	-208.8	-352.1	6.57	6.56	0.63
6,622.0	28.10	358.20	6,579.6	-348.4	-209.3	-337.6	6.89	6.88	0.94
6,653.0	30.40	359.80	6,606.7	-333.3	-209.5	-322.5	7.84	7.42	5.16
6,685.0	32.60	1.20	6,633.9	-316.5	-209.4	-305.8	7.24	6.88	4.38
6,717.0	35.30	1.80	6,660.5	-298.7	-208.9	-288.0	8.50	8.44	1.88
6,748.0	38.20	1.20	6,685.3	-280.1	-208.4	-269.5	9.43	9.35	-1.94
6,780.0	40.30	0.60	6,710.1	-259.9	-208.1	-249.3	6.67	6.56	-1.88
6,812.0	41.90	359.70	6,734.2	-238.9	-208.0	-228.3	5.33	5.00	-2.81

Company:	PETROLEUM DEVELOPMENT CORP Weld County CO	Local Co-ordinate Reference:	Well O Investment Properties 6Y-241
Project:	SEC.6-T6N-R65W	TVD Reference:	WELL @ 4792.0ft (RKB - 15')
Site:	O Investment Properties 6Y-HZ Pad Sec.6-T6N-R65W	MD Reference:	WELL @ 4792.0ft (RKB - 15')
Well:	O Investment Properties 6Y-241	North Reference:	True
Wellbore:	Wellbore #1	Survey Calculation Method:	Minimum Curvature
Design:	Wellbore #1	Database:	Landmark

Survey									
Measured Depth (ft)	Inclination (°)	Azimuth (°)	Vertical Depth (ft)	+N-S (ft)	+E-W (ft)	Vertical Section (ft)	Dogleg Rate (°/100ft)	Build Rate (°/100ft)	Turn Rate (°/100ft)
6,843.0	43.90	359.10	6,756.9	-217.8	-208.3	-207.2	6.58	6.45	-1.94
6,875.0	45.90	358.80	6,779.6	-195.2	-208.7	-184.6	6.28	6.25	-0.94
6,907.0	48.50	358.60	6,801.3	-171.7	-209.2	-161.1	8.14	8.13	-0.63
6,939.0	50.80	358.60	6,822.1	-147.3	-209.8	-136.7	7.19	7.19	0.00
6,971.0	53.40	359.10	6,841.7	-122.1	-210.3	-111.5	8.22	8.13	1.56
7,002.0	55.00	359.50	6,859.8	-97.0	-210.6	-86.4	5.27	5.16	1.29
7,034.0	55.80	0.40	6,878.0	-70.6	-210.6	-60.1	3.41	2.50	2.81
7,066.0	58.00	0.90	6,895.5	-43.8	-210.3	-33.3	7.00	6.88	1.56
7,098.0	60.90	0.90	6,911.7	-16.3	-209.9	-5.8	9.06	9.06	0.00
7,130.0	64.40	1.10	6,926.4	12.2	-209.4	22.5	10.95	10.94	0.63
7,161.0	67.00	359.70	6,939.2	40.4	-209.2	50.7	9.34	8.39	-4.52
7,193.0	69.50	359.00	6,951.1	70.1	-209.5	80.4	8.07	7.81	-2.19
7,225.0	71.40	358.40	6,961.8	100.3	-210.2	110.6	6.19	5.94	-1.88
7,257.0	73.40	358.70	6,971.4	130.8	-211.0	141.1	6.31	6.25	0.94
7,288.0	77.00	359.20	6,979.4	160.7	-211.5	171.0	11.72	11.61	1.61
7,320.0	81.50	359.20	6,985.3	192.1	-212.0	202.4	14.06	14.06	0.00
7,352.0	86.30	358.90	6,988.7	224.0	-212.5	234.2	15.03	15.00	-0.94
7,378.0	88.30	358.50	6,990.0	249.9	-213.1	260.2	7.84	7.69	-1.54
7,410.0	89.90	358.10	6,990.5	281.9	-214.1	292.2	5.15	5.00	-1.25
7,442.0	90.50	357.60	6,990.3	313.9	-215.3	324.2	2.44	1.88	-1.56
7,474.0	90.80	356.70	6,990.0	345.8	-216.8	356.2	2.96	0.94	-2.81
7,506.0	91.10	356.60	6,989.5	377.8	-218.7	388.2	0.99	0.94	-0.31
7,538.0	91.40	358.50	6,988.8	409.7	-220.1	420.1	6.01	0.94	5.94
7,569.0	91.10	359.20	6,988.1	440.7	-220.7	451.1	2.46	-0.97	2.26
7,601.0	90.70	359.20	6,987.6	472.7	-221.2	483.1	1.25	-1.25	0.00
7,633.0	91.00	359.00	6,987.1	504.7	-221.7	515.1	1.13	0.94	-0.63
7,665.0	90.80	359.60	6,986.6	536.7	-222.0	547.1	1.98	-0.63	1.88
7,697.0	90.70	359.90	6,986.2	568.7	-222.2	579.0	0.99	-0.31	0.94
7,729.0	90.40	0.80	6,985.9	600.7	-222.0	611.0	2.96	-0.94	2.81
7,760.0	90.00	0.40	6,985.8	631.7	-221.7	641.9	1.82	-1.29	-1.29
7,792.0	89.10	0.60	6,986.0	663.7	-221.4	673.9	2.88	-2.81	0.63
7,824.0	88.80	0.80	6,986.6	695.7	-221.0	705.8	1.13	-0.94	0.63
7,855.0	89.00	0.40	6,987.2	726.7	-220.7	736.7	1.44	0.65	-1.29
7,888.0	88.80	0.60	6,987.8	759.7	-220.4	769.7	0.86	-0.61	0.61
7,920.0	88.50	0.40	6,988.6	791.7	-220.1	801.6	1.13	-0.94	-0.63
7,952.0	89.10	0.80	6,989.3	823.6	-219.8	833.5	2.25	1.88	1.25
7,983.0	89.30	0.40	6,989.7	854.6	-219.4	864.5	1.44	0.65	-1.29
8,014.0	88.50	359.90	6,990.3	885.6	-219.4	895.4	3.04	-2.58	-1.61
8,046.0	88.70	0.10	6,991.1	917.6	-219.4	927.4	0.88	0.63	0.63
8,078.0	88.90	0.30	6,991.7	949.6	-219.3	959.3	0.88	0.63	0.63
8,110.0	89.60	0.40	6,992.2	981.6	-219.1	991.3	2.21	2.19	0.31
8,141.0	90.20	0.30	6,992.2	1,012.6	-218.9	1,022.2	1.96	1.94	-0.32
8,173.0	90.10	0.60	6,992.1	1,044.6	-218.6	1,054.2	0.99	-0.31	0.94
8,205.0	89.90	0.80	6,992.1	1,076.6	-218.2	1,086.1	0.88	-0.63	0.63
8,237.0	89.40	1.50	6,992.3	1,108.6	-217.6	1,118.0	2.69	-1.56	2.19
8,268.0	89.60	0.40	6,992.6	1,139.6	-217.1	1,149.0	3.61	0.65	-3.55
8,300.0	89.40	0.60	6,992.9	1,171.6	-216.8	1,180.9	0.88	-0.63	0.63
8,331.0	89.90	0.40	6,993.1	1,202.6	-216.5	1,211.9	1.74	1.61	-0.65
8,362.0	90.30	0.60	6,993.0	1,233.6	-216.2	1,242.8	1.44	1.29	0.65
8,394.0	90.10	0.10	6,992.9	1,265.6	-216.1	1,274.8	1.68	-0.63	-1.56
8,426.0	89.40	359.90	6,993.0	1,297.6	-216.1	1,306.7	2.28	-2.19	-0.63
8,458.0	88.70	0.10	6,993.6	1,329.6	-216.1	1,338.7	2.28	-2.19	0.63

Company:	PETROLEUM DEVELOPMENT CORP Weld County CO	Local Co-ordinate Reference:	Well O Investment Properties 6Y-241
Project:	SEC.6-T6N-R65W	TVD Reference:	WELL @ 4792.0ft (RKB - 15')
Site:	O Investment Properties 6Y-HZ Pad Sec.6-T6N-R65W	MD Reference:	WELL @ 4792.0ft (RKB - 15')
Well:	O Investment Properties 6Y-241	North Reference:	True
Wellbore:	Wellbore #1	Survey Calculation Method:	Minimum Curvature
Design:	Wellbore #1	Database:	Landmark

Survey									
Measured Depth (ft)	Inclination (°)	Azimuth (°)	Vertical Depth (ft)	+N-S (ft)	+E-W (ft)	Vertical Section (ft)	Dogleg Rate (°/100ft)	Build Rate (°/100ft)	Turn Rate (°/100ft)
8,489.0	88.90	359.60	6,994.2	1,360.6	-216.1	1,369.6	1.74	0.65	-1.61
8,521.0	89.30	359.40	6,994.7	1,392.6	-216.4	1,401.6	1.40	1.25	-0.63
8,553.0	90.00	0.10	6,994.9	1,424.6	-216.6	1,433.6	3.09	2.19	2.19
8,584.0	90.50	0.40	6,994.8	1,455.6	-216.4	1,464.5	1.88	1.61	0.97
8,616.0	90.20	0.80	6,994.6	1,487.6	-216.1	1,496.5	1.56	-0.94	1.25
8,648.0	89.70	1.50	6,994.6	1,519.6	-215.4	1,528.4	2.69	-1.56	2.19
8,679.0	89.60	1.10	6,994.8	1,550.6	-214.7	1,559.3	1.33	-0.32	-1.29
8,711.0	89.90	0.40	6,994.9	1,582.6	-214.3	1,591.2	2.38	0.94	-2.19
8,743.0	90.10	0.40	6,994.9	1,614.6	-214.1	1,623.2	0.63	0.63	0.00
8,774.0	90.80	359.90	6,994.7	1,645.6	-214.0	1,654.1	2.77	2.26	-1.61
8,806.0	91.50	359.90	6,994.0	1,677.5	-214.1	1,686.1	2.19	2.19	0.00
8,838.0	91.30	359.90	6,993.3	1,709.5	-214.1	1,718.1	0.63	-0.63	0.00
8,869.0	90.90	0.60	6,992.7	1,740.5	-214.0	1,749.0	2.60	-1.29	2.26
8,901.0	90.70	0.80	6,992.2	1,772.5	-213.6	1,780.9	0.88	-0.63	0.63
8,932.0	90.30	1.10	6,992.0	1,803.5	-213.1	1,811.9	1.61	-1.29	0.97
8,964.0	89.10	2.00	6,992.1	1,835.5	-212.2	1,843.8	4.69	-3.75	2.81
8,996.0	87.80	1.70	6,993.0	1,867.5	-211.2	1,875.7	4.17	-4.06	-0.94
9,028.0	87.80	1.30	6,994.2	1,899.4	-210.3	1,907.5	1.25	0.00	-1.25
9,059.0	88.40	1.10	6,995.2	1,930.4	-209.7	1,938.4	2.04	1.94	-0.65
9,091.0	88.80	1.30	6,996.0	1,962.4	-209.0	1,970.4	1.40	1.25	0.63
9,123.0	89.30	0.40	6,996.6	1,994.4	-208.6	2,002.3	3.22	1.56	-2.81
9,155.0	90.00	0.80	6,996.8	2,026.4	-208.2	2,034.2	2.52	2.19	1.25
9,186.0	91.00	0.80	6,996.5	2,057.4	-207.8	2,065.2	3.23	3.23	0.00
9,218.0	91.00	0.40	6,995.9	2,089.4	-207.5	2,097.1	1.25	0.00	-1.25
9,250.0	91.10	359.70	6,995.3	2,121.4	-207.4	2,129.0	2.21	0.31	-2.19
9,282.0	90.50	359.20	6,994.9	2,153.4	-207.7	2,161.0	2.44	-1.88	-1.56
9,313.0	89.90	358.50	6,994.8	2,184.4	-208.4	2,192.0	2.97	-1.94	-2.26
9,345.0	89.30	358.30	6,995.0	2,216.3	-209.2	2,224.0	1.98	-1.88	-0.63
9,377.0	89.50	358.70	6,995.3	2,248.3	-210.1	2,256.0	1.40	0.63	1.25
9,409.0	90.50	358.30	6,995.3	2,280.3	-210.9	2,288.0	3.37	3.13	-1.25
9,441.0	91.50	358.50	6,994.8	2,312.3	-211.8	2,320.0	3.19	3.13	0.63
9,472.0	90.80	358.30	6,994.2	2,343.3	-212.7	2,351.0	2.35	-2.26	-0.65
9,504.0	90.00	358.50	6,993.9	2,375.3	-213.6	2,382.9	2.58	-2.50	0.63
9,536.0	89.20	358.20	6,994.2	2,407.3	-214.5	2,414.9	2.67	-2.50	-0.94
9,567.0	89.30	357.60	6,994.6	2,438.2	-215.6	2,445.9	1.96	0.32	-1.94
9,599.0	90.00	356.90	6,994.8	2,470.2	-217.2	2,477.9	3.09	2.19	-2.19
9,631.0	90.70	358.30	6,994.6	2,502.2	-218.5	2,509.9	4.89	2.19	4.38
9,663.0	89.80	358.70	6,994.4	2,534.2	-219.3	2,541.9	3.08	-2.81	1.25
9,695.0	89.50	358.70	6,994.6	2,566.1	-220.1	2,573.9	0.94	-0.94	0.00
9,726.0	90.00	359.90	6,994.8	2,597.1	-220.4	2,604.9	4.19	1.61	3.87
9,758.0	90.00	0.40	6,994.8	2,629.1	-220.4	2,636.8	1.56	0.00	1.56
9,789.0	89.90	1.00	6,994.8	2,660.1	-220.0	2,667.8	1.96	-0.32	1.94
9,821.0	89.50	2.50	6,995.0	2,692.1	-219.0	2,699.7	4.85	-1.25	4.69
9,853.0	88.60	1.70	6,995.5	2,724.1	-217.8	2,731.5	3.76	-2.81	-2.50
9,884.0	88.80	1.50	6,996.2	2,755.1	-217.0	2,762.4	0.91	0.65	-0.65
9,916.0	89.90	0.40	6,996.5	2,787.1	-216.4	2,794.4	4.86	3.44	-3.44
9,948.0	91.00	0.60	6,996.3	2,819.1	-216.2	2,826.3	3.49	3.44	0.63
9,979.0	91.10	1.50	6,995.7	2,850.1	-215.6	2,857.2	2.92	0.32	2.90
10,011.0	89.90	2.20	6,995.4	2,882.0	-214.6	2,889.1	4.34	-3.75	2.19
10,043.0	88.80	1.30	6,995.8	2,914.0	-213.6	2,921.0	4.44	-3.44	-2.81
10,075.0	88.80	1.00	6,996.5	2,946.0	-212.9	2,952.9	0.94	0.00	-0.94
10,107.0	89.80	0.80	6,996.9	2,978.0	-212.4	2,984.9	3.19	3.13	-0.63
10,138.0	90.40	1.10	6,996.8	3,009.0	-211.9	3,015.8	2.16	1.94	0.97

Company:	PETROLEUM DEVELOPMENT CORP Weld County CO	Local Co-ordinate Reference:	Well O Investment Properties 6Y-241
Project:	SEC.6-T6N-R65W	TVD Reference:	WELL @ 4792.0ft (RKB - 15')
Site:	O Investment Properties 6Y-HZ Pad Sec.6-T6N-R65W	MD Reference:	WELL @ 4792.0ft (RKB - 15')
Well:	O Investment Properties 6Y-241	North Reference:	True
Wellbore:	Wellbore #1	Survey Calculation Method:	Minimum Curvature
Design:	Wellbore #1	Database:	Landmark

Survey									
Measured Depth (ft)	Inclination (°)	Azimuth (°)	Vertical Depth (ft)	+N/-S (ft)	+E/-W (ft)	Vertical Section (ft)	Dogleg Rate (°/100ft)	Build Rate (°/100ft)	Turn Rate (°/100ft)
10,170.0	89.50	359.70	6,996.8	3,041.0	-211.7	3,047.8	5.20	-2.81	-4.38
10,202.0	88.60	359.90	6,997.4	3,073.0	-211.8	3,079.7	2.88	-2.81	0.63
10,233.0	90.10	0.10	6,997.7	3,104.0	-211.8	3,110.7	4.88	4.84	0.65
10,265.0	91.10	359.60	6,997.4	3,136.0	-211.9	3,142.6	3.49	3.13	-1.56
10,297.0	90.70	359.20	6,996.9	3,168.0	-212.2	3,174.6	1.77	-1.25	-1.25
10,328.0	90.40	359.40	6,996.6	3,199.0	-212.6	3,205.6	1.16	-0.97	0.65
10,360.0	89.30	359.20	6,996.7	3,231.0	-213.0	3,237.6	3.49	-3.44	-0.63
10,392.0	89.00	359.70	6,997.2	3,263.0	-213.3	3,269.5	1.82	-0.94	1.56
10,423.0	89.60	0.10	6,997.5	3,294.0	-213.4	3,300.5	2.33	1.94	1.29
10,455.0	90.70	359.90	6,997.4	3,326.0	-213.4	3,332.5	3.49	3.44	-0.63
10,486.0	89.90	0.10	6,997.3	3,357.0	-213.4	3,363.4	2.66	-2.58	0.65
10,518.0	89.10	359.60	6,997.6	3,389.0	-213.4	3,395.4	2.95	-2.50	-1.56
10,549.0	88.90	359.90	6,998.1	3,420.0	-213.6	3,426.3	1.16	-0.65	0.97
10,581.0	89.10	359.00	6,998.7	3,451.9	-213.9	3,458.3	2.88	0.63	-2.81
10,613.0	89.40	359.00	6,999.1	3,483.9	-214.4	3,490.3	0.94	0.94	0.00
10,644.0	90.20	358.90	6,999.2	3,514.9	-215.0	3,521.3	2.60	2.58	-0.32
10,677.0	90.80	359.00	6,998.9	3,547.9	-215.6	3,554.3	1.84	1.82	0.30
10,708.0	90.80	359.20	6,998.5	3,578.9	-216.1	3,585.2	0.65	0.00	0.65
10,740.0	90.20	0.10	6,998.2	3,610.9	-216.3	3,617.2	3.38	-1.88	2.81
10,772.0	89.40	0.60	6,998.3	3,642.9	-216.1	3,649.2	2.95	-2.50	1.56
10,804.0	89.90	0.10	6,998.5	3,674.9	-215.9	3,681.1	2.21	1.56	-1.56
10,835.0	90.60	0.40	6,998.4	3,705.9	-215.8	3,712.1	2.46	2.26	0.97
10,867.0	89.90	0.40	6,998.2	3,737.9	-215.6	3,744.0	2.19	-2.19	0.00
10,899.0	89.00	1.00	6,998.5	3,769.9	-215.2	3,775.9	3.38	-2.81	1.88
10,930.0	89.90	1.00	6,998.8	3,800.9	-214.6	3,806.9	2.90	2.90	0.00
10,962.0	90.80	1.50	6,998.6	3,832.9	-213.9	3,838.8	3.22	2.81	1.56
10,994.0	90.00	1.50	6,998.4	3,864.9	-213.1	3,870.7	2.50	-2.50	0.00
11,026.0	89.10	2.00	6,998.7	3,896.9	-212.1	3,902.6	3.22	-2.81	1.56
11,058.0	89.60	2.00	6,999.0	3,928.8	-211.0	3,934.5	1.56	1.56	0.00
11,090.0	90.40	2.20	6,999.0	3,960.8	-209.8	3,966.4	2.58	2.50	0.63
11,122.0	90.60	2.20	6,998.7	3,992.8	-208.6	3,998.2	0.63	0.63	0.00
11,153.0	90.20	1.00	6,998.5	4,023.8	-207.7	4,029.1	4.08	-1.29	-3.87
11,185.0	88.90	0.30	6,998.8	4,055.8	-207.4	4,061.1	4.61	-4.06	-2.19
11,216.0	89.20	0.10	6,999.3	4,086.8	-207.3	4,092.0	1.16	0.97	-0.65
11,248.0	90.10	0.40	6,999.5	4,118.8	-207.1	4,124.0	2.96	2.81	0.94
11,280.0	89.30	359.60	6,999.7	4,150.8	-207.1	4,155.9	3.54	-2.50	-2.50
11,311.0	88.40	358.70	7,000.3	4,181.8	-207.6	4,186.9	4.11	-2.90	-2.90
11,343.0	90.10	359.40	7,000.7	4,213.8	-208.1	4,218.9	5.75	5.31	2.19
11,384.0	89.40	358.90	7,000.9	4,254.7	-208.7	4,259.9	2.10	-1.71	-1.22
11,439.0	89.40	358.90	7,001.5	4,309.7	-209.8	4,314.8	0.00	0.00	0.00
BHL 500'FNL, 480'FEL									

Checked By: _____ Approved By: _____ Date: _____