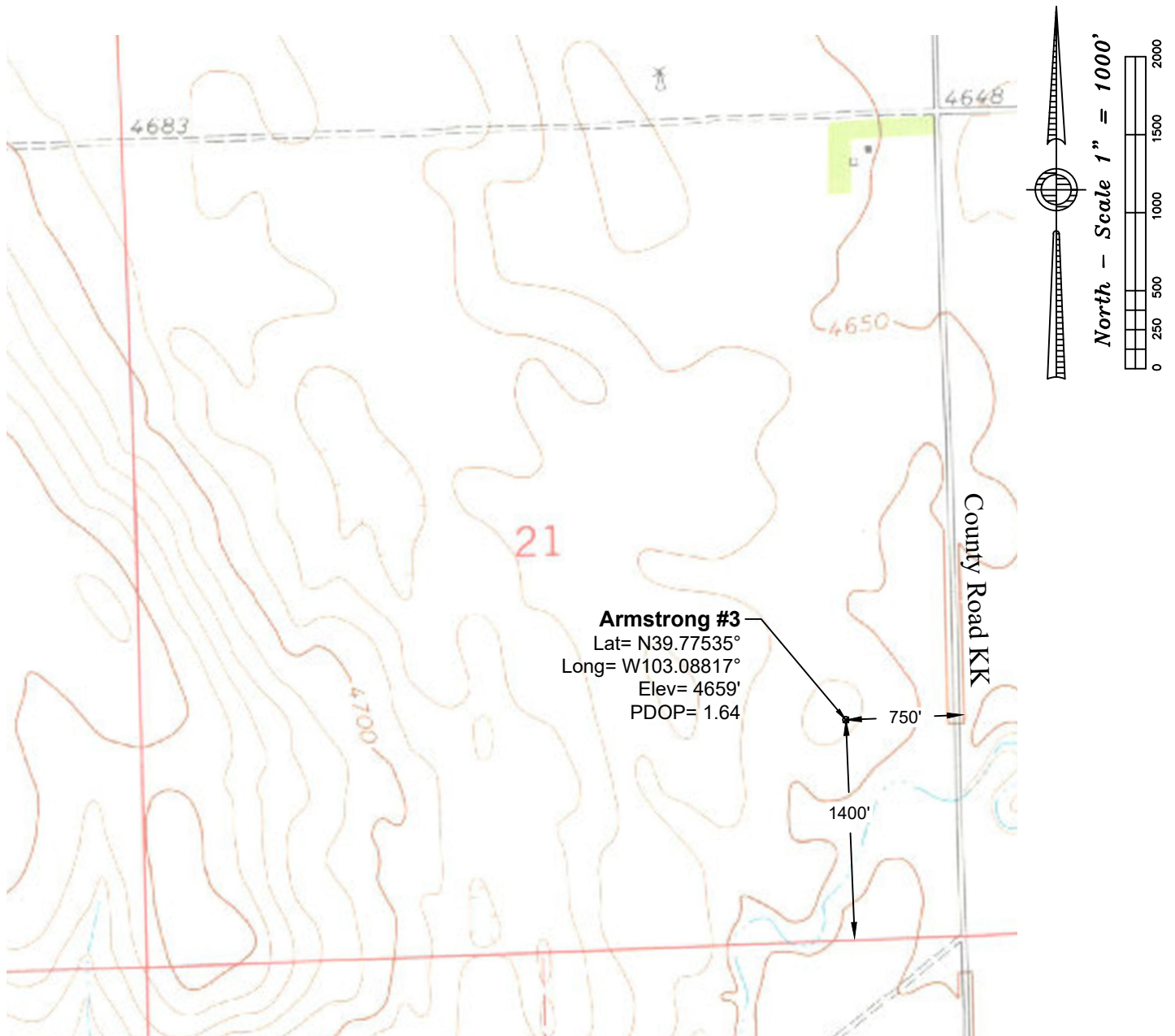


Topographic Map



Notes:

- In accordance with a request from St. Croix Operating, Inc., PLS Corporation has determined the location of the Armstrong #3 well to be 750' FEL and 1400' FSL as measured perpendicular to the section lines.
- Survey elevations based on NAVD 88 Datum using GPS observed heights and Geoid 12B corrections.
- Distances shown are in SPC grid feet. Ground scale factor= 1.000229106650.
- There are no improvements within 100' of the proposed well site.
- Apparent Land Use is cropland.
- Vegetation is unknown.
- Topographic map contours and spot elevations based on NGVD 1929 Datum.
- Topographic map dated 1977.

P:\Project\2019\19056\dwg\19056_Topo.dwg July 17, 2019 - 12:59pm

Well Name: Armstrong #3	Field Date 5/31/2019	Prepared for: St. Croix Operating, Inc.
Section 21-T3S-R51W-6th PM, NE-SE	Party Chief DCB	
Washington County, Colorado	Proj. Manager MDG	
	Drawing Date 6/7/2019	Project#: 19056.001 PLS Corporation 532 West 66th Street Loveland, Colorado 80538 970.669.2100 office - info@plscorporation.com