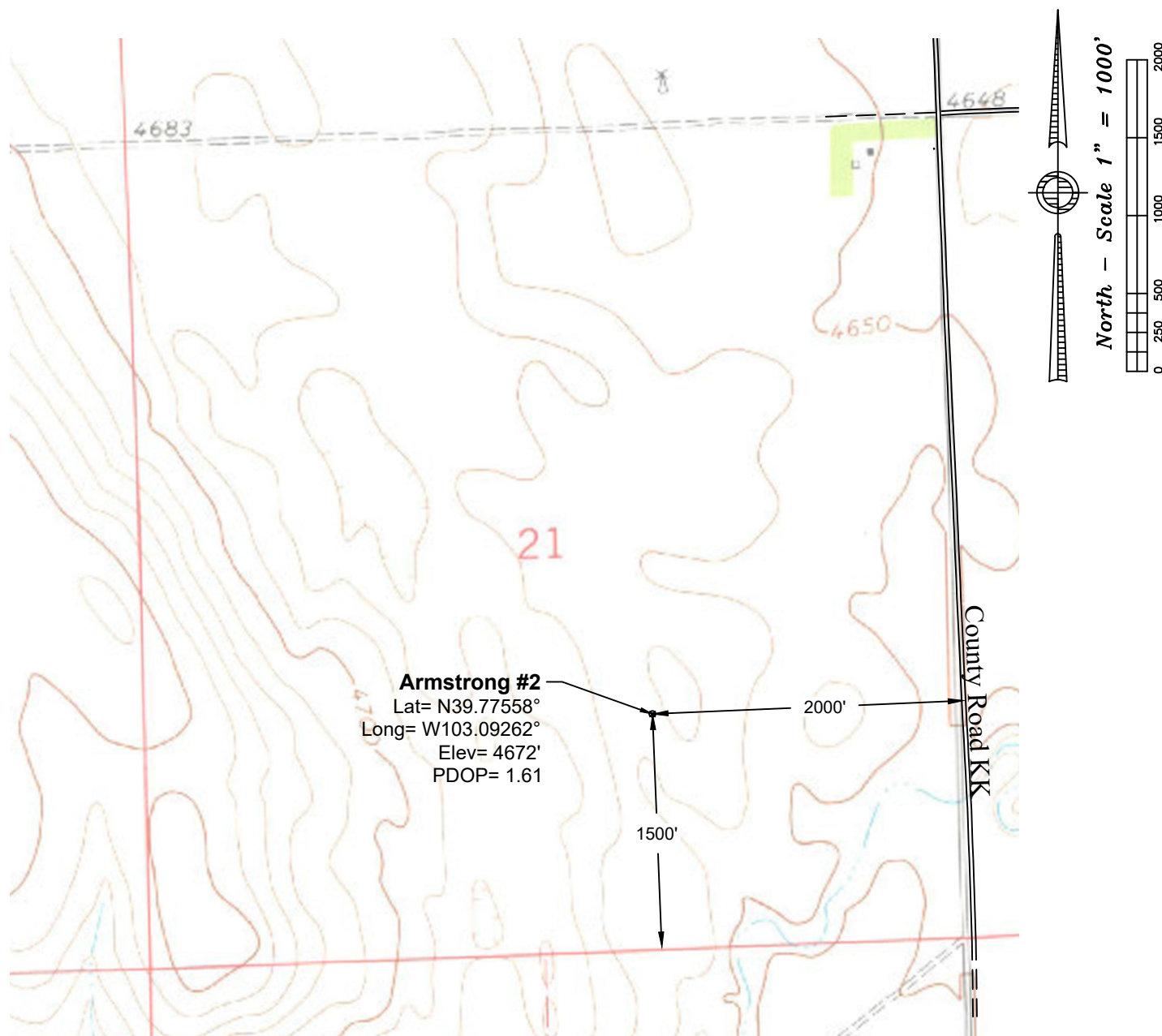


Topographic Map



Notes:

- In accordance with a request from St. Croix Operating, Inc., PLS Corporation has determined the location of the Armstrong #2 well to be 2000' FEL and 1500' FSL as measured perpendicular to the section lines.
- Survey elevations based on NAVD 88 Datum using GPS observed heights and Geoid 12B corrections.
- Distances shown are in SPC grid feet. Ground scale factor= 1.000229106650.
- There are no improvements within 100' of the proposed well site.
- Apparent Land Use is cropland.
- Vegetation is unknown.
- Topographic map contours and spot elevations based on NGVD 1929 Datum.
- Topographic map dated 1977.

P:\Project\2019\19055\dwg\19055_Topo.dwg July 17, 2019 - 12:25pm

Well Name: Armstrong #2	Field Date 5.31.2019	Prepared for: St. Croix Operating, Inc.
Section 21-T3S-R51W-6th PM, NW-SE	Party Chief DCB	
	Proj. Manager MDG	
Washington County, Colorado	Drawing Date 6.7.2019	PLS Corporation 532 West 66th Street Loveland, Colorado 80538 970.669.2100 office - info@plscorporation.com