



Crestone Peak Resources

Well Name:

WARNER 2H-10H-E165

Project Name:

Sec 10 T1N-R65W

Pad Name:

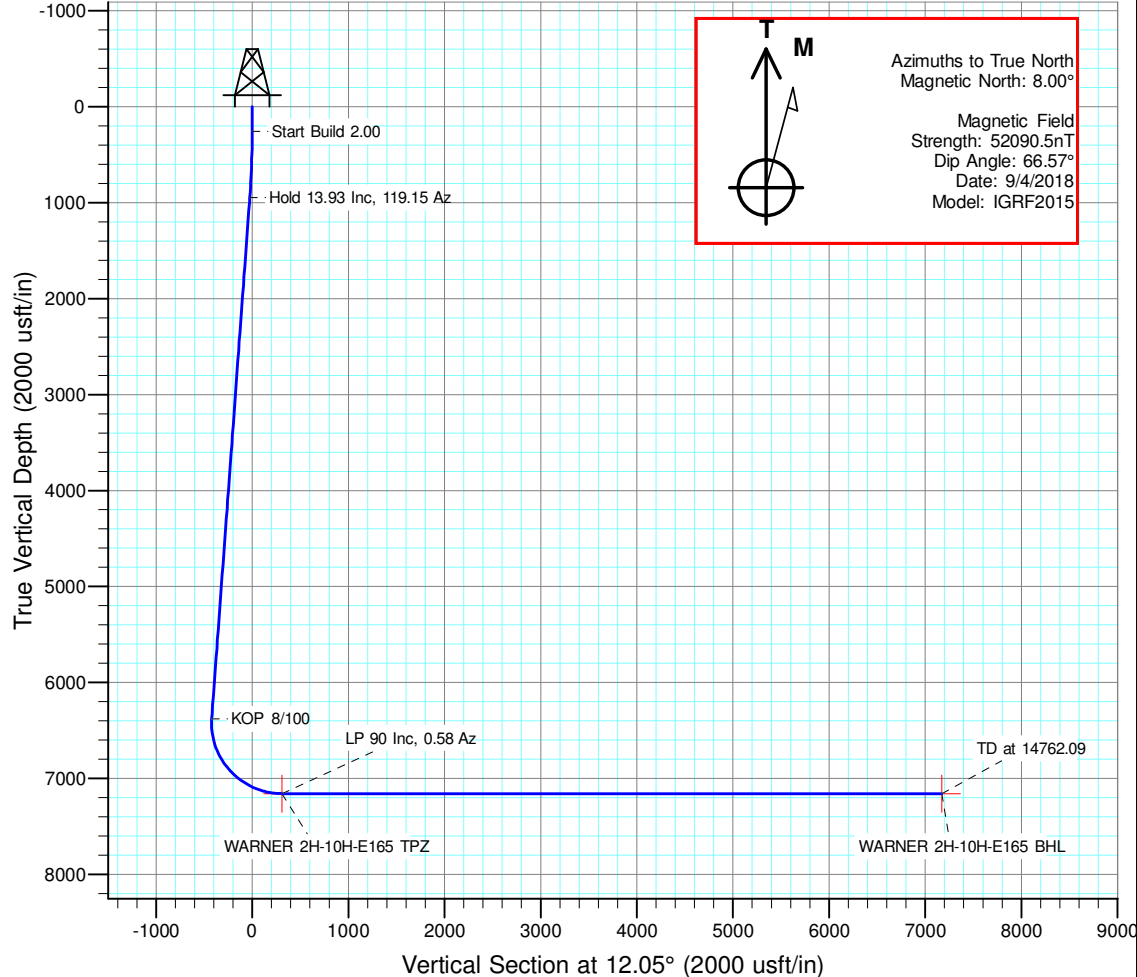
Warner Pad

ANNOTATIONS

MD	Inc	Azi	TVD	+N/-S	+E/-W	VSec	Departure	Annotation
260.00	0.00	0.00	260.00	0.00	0.00	0.00	0.00	Start Build 2.00
956.44	13.93	119.15	949.60	-41.04	73.57	-24.77	84.24	Hold 13.93 Inc, 119.15 Az
6550.99	13.93	119.15	6379.64	-697.07	1249.66	-420.80	1430.93	KOP 8/100
7758.62	90.00	0.58	7160.00	12.61	1426.82	310.23	2205.89	LP 90 Inc, 0.58 Az
14762.09	90.00	0.58	7160.00	7015.71	1497.76	7173.81	9209.35	TD at 14762.09

DESIGN TARGET DETAILS

Name	TVD	+N/-S	+E/-W	Northing	Easting	Latitude	Longitude	Shape
WARNER 2H-10H-E165 BHL	7160.00	7015.71	1497.76	1275492.964	3237034.718	40.086511	-104.652824	Point
WARNER 2H-10H-E165 TPZ	7160.00	12.61	1426.82	1268489.503	3237030.259	40.067286	-104.653079	Point

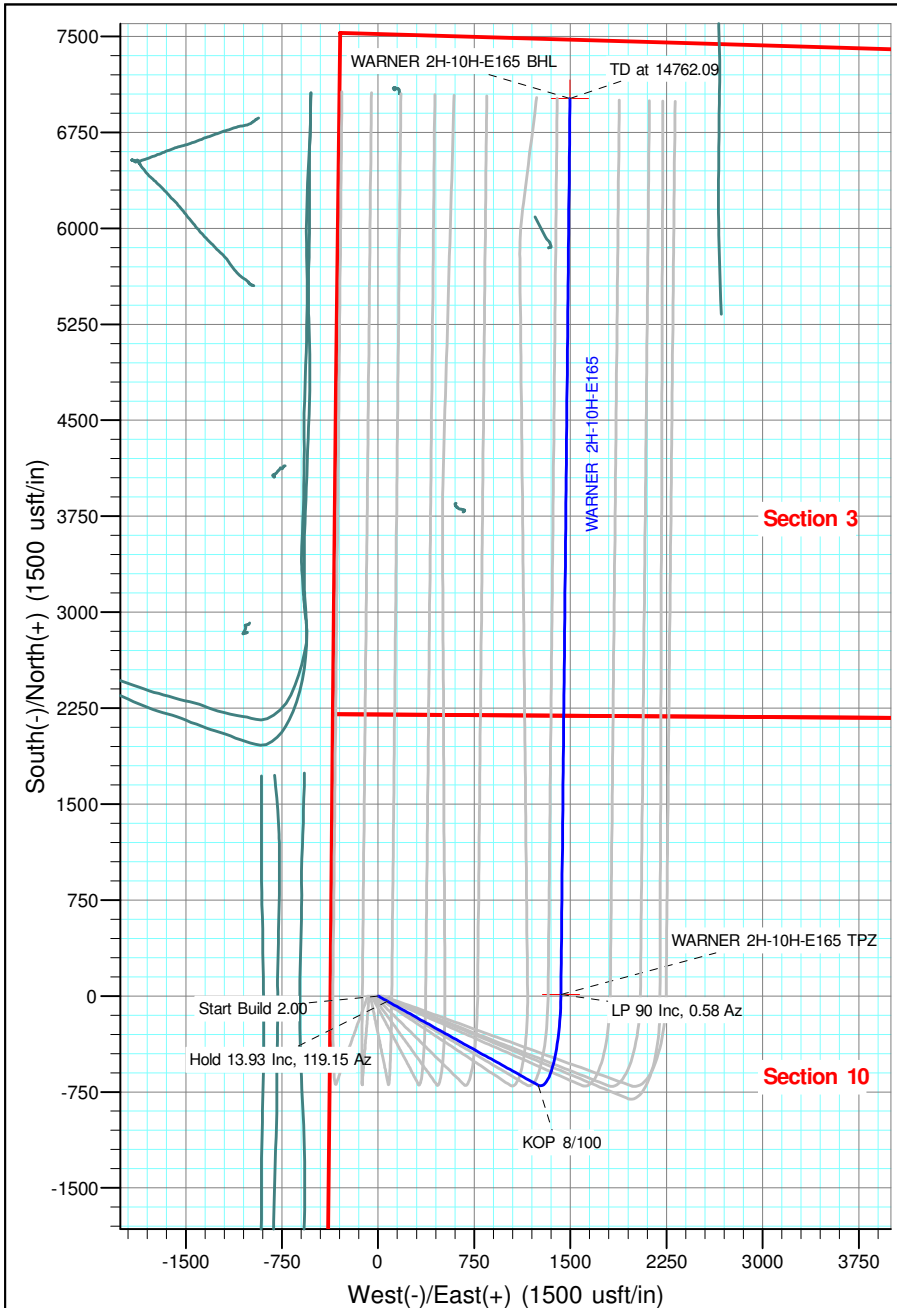


Geodetic Datum:

North American Datum 1983
US State Plane 1983, Colorado Northern Zone

Elevation:

Ground Elevation: 4971.00
KB Elevation: WELL @ 4994.00usft (Original Well Elev)





Crestone Peak Resources

Sec 10 T1N-R65W

Warner Pad

WARNER 2H-10H-E165

Wellbore #1

Plan: Plan #3 27Sep18 kjs

Standard Planning Report - Geographic

28 September, 2018

Database:	EDM 5000.15 Single User Db	Local Co-ordinate Reference:	Well WARNER 2H-10H-E165
Company:	Crestone Peak Resources	TVD Reference:	WELL @ 4994.00usft (Original Well Elev)
Project:	Sec 10 T1N-R65W	MD Reference:	WELL @ 4994.00usft (Original Well Elev)
Site:	Warner Pad	North Reference:	True
Well:	WARNER 2H-10H-E165	Survey Calculation Method:	Minimum Curvature
Wellbore:	Wellbore #1		
Design:	Plan #3 27Sep18 kjs		

Project	Sec 10 T1N-R65W, Wattenberg Field		
Map System:	US State Plane 1983	System Datum:	Mean Sea Level
Geo Datum:	North American Datum 1983		
Map Zone:	Colorado Northern Zone		

Site		Warner Pad			
Site Position:		Northing:	1,268,463.012 usft	Latitude:	40.067253
From:	Lat/Long	Easting:	3,235,523.582 usft	Longitude:	-104.658463
Position Uncertainty:	0.00 usft	Slot Radius:	13-3/16 "	Grid Convergence:	0.54

Well	WARNER 2H-10H-E165					
Well Position	+N/-S	0.00 usft	Northing:	1,268,463.349 usft	Latitude:	40.067252
	+E/-W	0.00 usft	Easting:	3,235,603.628 usft	Longitude:	-104.658177
Position Uncertainty		0.00 usft	Wellhead Elevation:		Ground Level:	4,971.00 usft

Wellbore	Wellbore #1				
Magnetics	Model Name	Sample Date	Declination (°)	Dip Angle (°)	Field Strength (nT)
	IGRF2015	9/4/2018	8.00	66.57	52,090.50232051

Design	Plan #3 27Sep18 kjs			
Audit Notes:				
Version:	Phase:	PLAN	Tie On Depth:	0.00
Vertical Section:	Depth From (TVD) (usft)	+N/-S (usft)	+E/-W (usft)	Direction (°)
	0.00	0.00	0.00	12.05

Plan Survey Tool Program	Date	9/28/2018		
Depth From (usft)	Depth To (usft)	Survey (Wellbore)	Tool Name	Remarks
1	0.00	14,762.09 Plan #3 27Sep18 kjs (Wellbore #	MWD	
			OWSG MWD - Standard	

Plan Sections										
Measured Depth (usft)	Inclination (°)	Azimuth (°)	Vertical Depth (usft)	+N/-S (usft)	+E/-W (usft)	Dogleg Rate (°/100usft)	Build Rate (°/100usft)	Turn Rate (°/100usft)	TFO (°)	Target
0.00	0.00	0.00	0.00	0.00	0.00	0.00	0.00	0.00	0.00	
260.00	0.00	0.00	260.00	0.00	0.00	0.00	0.00	0.00	0.00	
956.44	13.93	119.15	949.60	-41.04	73.57	2.00	2.00	0.00	119.15	
6,550.99	13.93	119.15	6,379.64	-697.07	1,249.66	0.00	0.00	0.00	0.00	
7,758.62	90.00	0.58	7,160.00	12.61	1,426.82	8.00	6.30	-9.82	-117.86	WARNER 2H-10H-E1
14,762.09	90.00	0.58	7,160.00	7,015.71	1,497.76	0.00	0.00	0.00	0.00	WARNER 2H-10H-E1

Database:	EDM 5000.15 Single User Db	Local Co-ordinate Reference:	Well WARNER 2H-10H-E165
Company:	Crestone Peak Resources	TVD Reference:	WELL @ 4994.00usft (Original Well Elev)
Project:	Sec 10 T1N-R65W	MD Reference:	WELL @ 4994.00usft (Original Well Elev)
Site:	Warner Pad	North Reference:	True
Well:	WARNER 2H-10H-E165	Survey Calculation Method:	Minimum Curvature
Wellbore:	Wellbore #1		
Design:	Plan #3 27Sep18 kjs		

Planned Survey									
Measured Depth (usft)	Inclination (°)	Azimuth (°)	Vertical Depth (usft)	+N/-S (usft)	+E/-W (usft)	Map Northing (usft)	Map Easting (usft)	Latitude	Longitude
0.00	0.00	0.00	0.00	0.00	0.00	1,268,463.349	3,235,603.628	40.067252	-104.658177
100.00	0.00	0.00	100.00	0.00	0.00	1,268,463.349	3,235,603.628	40.067252	-104.658177
200.00	0.00	0.00	200.00	0.00	0.00	1,268,463.349	3,235,603.628	40.067252	-104.658177
260.00	0.00	0.00	260.00	0.00	0.00	1,268,463.349	3,235,603.628	40.067252	-104.658177
Start Build 2.00									
300.00	0.80	119.15	300.00	-0.14	0.24	1,268,463.215	3,235,603.873	40.067252	-104.658176
400.00	2.80	119.15	399.94	-1.67	2.99	1,268,461.711	3,235,606.630	40.067247	-104.658167
500.00	4.80	119.15	499.72	-4.89	8.77	1,268,458.538	3,235,612.448	40.067238	-104.658146
600.00	6.80	119.15	599.20	-9.82	17.60	1,268,453.699	3,235,621.320	40.067225	-104.658114
700.00	8.80	119.15	698.27	-16.43	29.45	1,268,447.201	3,235,633.234	40.067207	-104.658072
800.00	10.80	119.15	796.81	-24.72	44.32	1,268,439.051	3,235,648.176	40.067184	-104.658019
900.00	12.80	119.15	894.69	-34.68	62.17	1,268,429.260	3,235,666.128	40.067157	-104.657955
956.44	13.93	119.15	949.60	-41.04	73.57	1,268,423.013	3,235,677.580	40.067139	-104.657914
Hold 13.93 Inc, 119.15 Az									
1,000.00	13.93	119.15	991.88	-46.14	82.72	1,268,417.992	3,235,686.786	40.067125	-104.657882
1,100.00	13.93	119.15	1,088.94	-57.87	103.75	1,268,406.466	3,235,707.918	40.067093	-104.657807
1,200.00	13.93	119.15	1,186.00	-69.60	124.77	1,268,394.940	3,235,729.051	40.067061	-104.657731
1,300.00	13.93	119.15	1,283.06	-81.32	145.79	1,268,383.414	3,235,750.183	40.067029	-104.657656
1,400.00	13.93	119.15	1,380.12	-93.05	166.81	1,268,371.887	3,235,771.316	40.066996	-104.657581
1,500.00	13.93	119.15	1,477.18	-104.78	187.83	1,268,360.361	3,235,792.448	40.066964	-104.657506
1,600.00	13.93	119.15	1,574.24	-116.50	208.86	1,268,348.835	3,235,813.581	40.066932	-104.657431
1,700.00	13.93	119.15	1,671.30	-128.23	229.88	1,268,337.309	3,235,834.713	40.066900	-104.657356
1,800.00	13.93	119.15	1,768.36	-139.95	250.90	1,268,325.783	3,235,855.846	40.066868	-104.657281
1,900.00	13.93	119.15	1,865.42	-151.68	271.92	1,268,314.257	3,235,876.978	40.066836	-104.657206
2,000.00	13.93	119.15	1,962.48	-163.41	292.94	1,268,302.730	3,235,898.111	40.066803	-104.657131
2,100.00	13.93	119.15	2,059.54	-175.13	313.97	1,268,291.204	3,235,919.243	40.066771	-104.657055
2,200.00	13.93	119.15	2,156.59	-186.86	334.99	1,268,279.678	3,235,940.376	40.066739	-104.656980
2,300.00	13.93	119.15	2,253.65	-198.59	356.01	1,268,268.152	3,235,961.508	40.066707	-104.656905
2,400.00	13.93	119.15	2,350.71	-210.31	377.03	1,268,256.626	3,235,982.641	40.066675	-104.656830
2,500.00	13.93	119.15	2,447.77	-222.04	398.06	1,268,245.099	3,236,003.773	40.066642	-104.656755
2,600.00	13.93	119.15	2,544.83	-233.76	419.08	1,268,233.573	3,236,024.906	40.066610	-104.656680
2,700.00	13.93	119.15	2,641.89	-245.49	440.10	1,268,222.047	3,236,046.038	40.066578	-104.656605
2,800.00	13.93	119.15	2,738.95	-257.22	461.12	1,268,210.521	3,236,067.171	40.066546	-104.656530
2,900.00	13.93	119.15	2,836.01	-268.94	482.14	1,268,198.995	3,236,088.303	40.066514	-104.656455
3,000.00	13.93	119.15	2,933.07	-280.67	503.17	1,268,187.469	3,236,109.436	40.066481	-104.656379
3,100.00	13.93	119.15	3,030.13	-292.40	524.19	1,268,175.942	3,236,130.568	40.066449	-104.656304
3,200.00	13.93	119.15	3,127.19	-304.12	545.21	1,268,164.416	3,236,151.701	40.066417	-104.656229
3,300.00	13.93	119.15	3,224.25	-315.85	566.23	1,268,152.890	3,236,172.833	40.066385	-104.656154
3,400.00	13.93	119.15	3,321.31	-327.57	587.25	1,268,141.364	3,236,193.966	40.066353	-104.656079
3,500.00	13.93	119.15	3,418.37	-339.30	608.28	1,268,129.838	3,236,215.098	40.066320	-104.656004
3,600.00	13.93	119.15	3,515.43	-351.03	629.30	1,268,118.311	3,236,236.231	40.066288	-104.655929
3,700.00	13.93	119.15	3,612.49	-362.75	650.32	1,268,106.785	3,236,257.363	40.066256	-104.655854
3,800.00	13.93	119.15	3,709.55	-374.48	671.34	1,268,095.259	3,236,278.496	40.066224	-104.655779
3,900.00	13.93	119.15	3,806.61	-386.21	692.37	1,268,083.733	3,236,299.628	40.066192	-104.655703
4,000.00	13.93	119.15	3,903.67	-397.93	713.39	1,268,072.207	3,236,320.761	40.066160	-104.655628
4,100.00	13.93	119.15	4,000.73	-409.66	734.41	1,268,060.681	3,236,341.893	40.066127	-104.655553
4,200.00	13.93	119.15	4,097.79	-421.38	755.43	1,268,049.154	3,236,363.026	40.066095	-104.655478
4,300.00	13.93	119.15	4,194.85	-433.11	776.45	1,268,037.628	3,236,384.159	40.066063	-104.655403
4,400.00	13.93	119.15	4,291.91	-444.84	797.48	1,268,026.102	3,236,405.291	40.066031	-104.655328
4,500.00	13.93	119.15	4,388.97	-456.56	818.50	1,268,014.576	3,236,426.424	40.065999	-104.655253
4,600.00	13.93	119.15	4,486.02	-468.29	839.52	1,268,003.050	3,236,447.556	40.065966	-104.655178
4,700.00	13.93	119.15	4,583.08	-480.02	860.54	1,267,991.523	3,236,468.689	40.065934	-104.655103
4,800.00	13.93	119.15	4,680.14	-491.74	881.56	1,267,979.997	3,236,489.821	40.065902	-104.655028
4,900.00	13.93	119.15	4,777.20	-503.47	902.59	1,267,968.471	3,236,510.954	40.065870	-104.654952

Database:	EDM 5000.15 Single User Db	Local Co-ordinate Reference:	Well WARNER 2H-10H-E165
Company:	Crestone Peak Resources	TVD Reference:	WELL @ 4994.00usft (Original Well Elev)
Project:	Sec 10 T1N-R65W	MD Reference:	WELL @ 4994.00usft (Original Well Elev)
Site:	Warner Pad	North Reference:	True
Well:	WARNER 2H-10H-E165	Survey Calculation Method:	Minimum Curvature
Wellbore:	Wellbore #1		
Design:	Plan #3 27Sep18 kjs		

Planned Survey									
Measured Depth (usft)	Inclination (°)	Azimuth (°)	Vertical Depth (usft)	+N/-S (usft)	+E/-W (usft)	Map Northing (usft)	Map Easting (usft)	Latitude	Longitude
5,000.00	13.93	119.15	4,874.26	-515.19	923.61	1,267,956.945	3,236,532.086	40.065838	-104.654877
5,100.00	13.93	119.15	4,971.32	-526.92	944.63	1,267,945.419	3,236,553.219	40.065805	-104.654802
5,200.00	13.93	119.15	5,068.38	-538.65	965.65	1,267,933.893	3,236,574.351	40.065773	-104.654727
5,300.00	13.93	119.15	5,165.44	-550.37	986.68	1,267,922.366	3,236,595.484	40.065741	-104.654652
5,400.00	13.93	119.15	5,262.50	-562.10	1,007.70	1,267,910.840	3,236,616.616	40.065709	-104.654577
5,500.00	13.93	119.15	5,359.56	-573.83	1,028.72	1,267,899.314	3,236,637.749	40.065677	-104.654502
5,600.00	13.93	119.15	5,456.62	-585.55	1,049.74	1,267,887.788	3,236,658.881	40.065644	-104.654427
5,700.00	13.93	119.15	5,553.68	-597.28	1,070.76	1,267,876.262	3,236,680.014	40.065612	-104.654352
5,800.00	13.93	119.15	5,650.74	-609.01	1,091.79	1,267,864.735	3,236,701.146	40.065580	-104.654276
5,900.00	13.93	119.15	5,747.80	-620.73	1,112.81	1,267,853.209	3,236,722.279	40.065548	-104.654201
6,000.00	13.93	119.15	5,844.86	-632.46	1,133.83	1,267,841.683	3,236,743.411	40.065516	-104.654126
6,100.00	13.93	119.15	5,941.92	-644.18	1,154.85	1,267,830.157	3,236,764.544	40.065483	-104.654051
6,200.00	13.93	119.15	6,038.98	-655.91	1,175.87	1,267,818.631	3,236,785.676	40.065451	-104.653976
6,300.00	13.93	119.15	6,136.04	-667.64	1,196.90	1,267,807.104	3,236,806.809	40.065419	-104.653901
6,400.00	13.93	119.15	6,233.10	-679.36	1,217.92	1,267,795.578	3,236,827.941	40.065387	-104.653826
6,500.00	13.93	119.15	6,330.16	-691.09	1,238.94	1,267,784.052	3,236,849.074	40.065355	-104.653751
6,550.99	13.93	119.15	6,379.64	-697.07	1,249.66	1,267,778.176	3,236,859.848	40.065338	-104.653712
KOP 8/100									
6,600.00	12.57	103.03	6,427.37	-701.15	1,260.01	1,267,774.196	3,236,870.240	40.065327	-104.653675
6,700.00	13.37	66.99	6,524.97	-699.08	1,281.29	1,267,776.467	3,236,891.500	40.065333	-104.653599
6,800.00	18.04	42.55	6,621.32	-683.13	1,302.44	1,267,792.618	3,236,912.494	40.065377	-104.653524
6,900.00	24.46	29.19	6,714.52	-653.60	1,323.04	1,267,822.336	3,236,932.814	40.065458	-104.653450
7,000.00	31.57	21.34	6,802.78	-611.08	1,342.70	1,267,865.041	3,236,952.064	40.065574	-104.653380
7,100.00	39.00	16.18	6,884.37	-556.39	1,361.02	1,267,919.902	3,236,969.869	40.065724	-104.653314
7,200.00	46.59	12.47	6,957.71	-490.60	1,377.66	1,267,985.852	3,236,985.882	40.065905	-104.653255
7,300.00	54.28	9.59	7,021.36	-414.98	1,392.29	1,268,061.607	3,236,999.794	40.066113	-104.653203
7,400.00	62.03	7.22	7,074.09	-331.01	1,404.62	1,268,145.692	3,237,011.331	40.066343	-104.653159
7,500.00	69.81	5.18	7,114.87	-240.32	1,414.42	1,268,236.471	3,237,020.270	40.066592	-104.653124
7,600.00	77.61	3.32	7,142.91	-144.67	1,421.50	1,268,332.176	3,237,026.437	40.066855	-104.653098
7,700.00	85.42	1.58	7,157.66	-45.94	1,425.71	1,268,430.946	3,237,029.712	40.067126	-104.653083
7,758.62	90.00	0.58	7,160.00	12.61	1,426.82	1,268,489.503	3,237,030.259	40.067286	-104.653079
LP 90 Inc, 0.58 Az - WARNER 2H-10H-E165 TPZ									
7,800.00	90.00	0.58	7,160.00	53.99	1,427.23	1,268,530.880	3,237,030.285	40.067400	-104.653078
7,900.00	90.00	0.58	7,160.00	153.98	1,428.25	1,268,630.880	3,237,030.348	40.067675	-104.653074
8,000.00	90.00	0.58	7,160.00	253.97	1,429.26	1,268,730.880	3,237,030.411	40.067949	-104.653070
8,100.00	90.00	0.58	7,160.00	353.97	1,430.27	1,268,830.880	3,237,030.474	40.068224	-104.653067
8,200.00	90.00	0.58	7,160.00	453.96	1,431.28	1,268,930.880	3,237,030.537	40.068498	-104.653063
8,300.00	90.00	0.58	7,160.00	553.96	1,432.30	1,269,030.880	3,237,030.600	40.068773	-104.653060
8,400.00	90.00	0.58	7,160.00	653.95	1,433.31	1,269,130.880	3,237,030.663	40.069047	-104.653056
8,500.00	90.00	0.58	7,160.00	753.95	1,434.32	1,269,230.880	3,237,030.726	40.069322	-104.653052
8,600.00	90.00	0.58	7,160.00	853.94	1,435.33	1,269,330.880	3,237,030.789	40.069596	-104.653049
8,700.00	90.00	0.58	7,160.00	953.94	1,436.34	1,269,430.880	3,237,030.852	40.069871	-104.653045
8,800.00	90.00	0.58	7,160.00	1,053.93	1,437.36	1,269,530.880	3,237,030.915	40.070145	-104.653041
8,900.00	90.00	0.58	7,160.00	1,153.93	1,438.37	1,269,630.880	3,237,030.978	40.070420	-104.653038
9,000.00	90.00	0.58	7,160.00	1,253.92	1,439.38	1,269,730.880	3,237,031.041	40.070694	-104.653034
9,100.00	90.00	0.58	7,160.00	1,353.92	1,440.39	1,269,830.880	3,237,031.104	40.070969	-104.653030
9,200.00	90.00	0.58	7,160.00	1,453.91	1,441.41	1,269,930.880	3,237,031.167	40.071243	-104.653027
9,300.00	90.00	0.58	7,160.00	1,553.91	1,442.42	1,270,030.880	3,237,031.230	40.071518	-104.653023
9,400.00	90.00	0.58	7,160.00	1,653.90	1,443.43	1,270,130.880	3,237,031.293	40.071792	-104.653020
9,500.00	90.00	0.58	7,160.00	1,753.90	1,444.44	1,270,230.880	3,237,031.356	40.072067	-104.653016
9,600.00	90.00	0.58	7,160.00	1,853.89	1,445.46	1,270,330.880	3,237,031.419	40.072341	-104.653012
9,700.00	90.00	0.58	7,160.00	1,953.89	1,446.47	1,270,430.880	3,237,031.481	40.072616	-104.653009
9,800.00	90.00	0.58	7,160.00	2,053.88	1,447.48	1,270,530.880	3,237,031.544	40.072890	-104.653005
9,900.00	90.00	0.58	7,160.00	2,153.88	1,448.49	1,270,630.880	3,237,031.607	40.073165	-104.653001

Database:	EDM 5000.15 Single User Db	Local Co-ordinate Reference:	Well WARNER 2H-10H-E165
Company:	Crestone Peak Resources	TVD Reference:	WELL @ 4994.00usft (Original Well Elev)
Project:	Sec 10 T1N-R65W	MD Reference:	WELL @ 4994.00usft (Original Well Elev)
Site:	Warner Pad	North Reference:	True
Well:	WARNER 2H-10H-E165	Survey Calculation Method:	Minimum Curvature
Wellbore:	Wellbore #1		
Design:	Plan #3 27Sep18 kjs		

Planned Survey									
Measured Depth (usft)	Inclination (°)	Azimuth (°)	Vertical Depth (usft)	+N/-S (usft)	+E/-W (usft)	Map Northing (usft)	Map Easting (usft)	Latitude	Longitude
10,000.00	90.00	0.58	7,160.00	2,253.87	1,449.50	1,270,730.880	3,237,031.670	40.073439	-104.652998
10,100.00	90.00	0.58	7,160.00	2,353.87	1,450.52	1,270,830.880	3,237,031.733	40.073714	-104.652994
10,200.00	90.00	0.58	7,160.00	2,453.86	1,451.53	1,270,930.880	3,237,031.796	40.073988	-104.652990
10,300.00	90.00	0.58	7,160.00	2,553.86	1,452.54	1,271,030.880	3,237,031.859	40.074263	-104.652987
10,400.00	90.00	0.58	7,160.00	2,653.85	1,453.55	1,271,130.880	3,237,031.922	40.074537	-104.652983
10,500.00	90.00	0.58	7,160.00	2,753.85	1,454.57	1,271,230.880	3,237,031.985	40.074812	-104.652980
10,600.00	90.00	0.58	7,160.00	2,853.84	1,455.58	1,271,330.880	3,237,032.048	40.075086	-104.652976
10,700.00	90.00	0.58	7,160.00	2,953.84	1,456.59	1,271,430.880	3,237,032.111	40.075361	-104.652972
10,800.00	90.00	0.58	7,160.00	3,053.83	1,457.60	1,271,530.879	3,237,032.174	40.075635	-104.652969
10,900.00	90.00	0.58	7,160.00	3,153.83	1,458.61	1,271,630.879	3,237,032.237	40.075910	-104.652965
11,000.00	90.00	0.58	7,160.00	3,253.82	1,459.63	1,271,730.879	3,237,032.300	40.076184	-104.652961
11,100.00	90.00	0.58	7,160.00	3,353.82	1,460.64	1,271,830.879	3,237,032.363	40.076459	-104.652958
11,200.00	90.00	0.58	7,160.00	3,453.81	1,461.65	1,271,930.879	3,237,032.426	40.076733	-104.652954
11,300.00	90.00	0.58	7,160.00	3,553.81	1,462.66	1,272,030.879	3,237,032.489	40.077008	-104.652950
11,400.00	90.00	0.58	7,160.00	3,653.80	1,463.68	1,272,130.879	3,237,032.552	40.077282	-104.652947
11,500.00	90.00	0.58	7,160.00	3,753.80	1,464.69	1,272,230.879	3,237,032.615	40.077557	-104.652943
11,600.00	90.00	0.58	7,160.00	3,853.79	1,465.70	1,272,330.879	3,237,032.678	40.077831	-104.652940
11,700.00	90.00	0.58	7,160.00	3,953.79	1,466.71	1,272,430.879	3,237,032.741	40.078106	-104.652936
11,800.00	90.00	0.58	7,160.00	4,053.78	1,467.73	1,272,530.879	3,237,032.803	40.078380	-104.652932
11,900.00	90.00	0.58	7,160.00	4,153.78	1,468.74	1,272,630.879	3,237,032.866	40.078655	-104.652929
12,000.00	90.00	0.58	7,160.00	4,253.77	1,469.75	1,272,730.879	3,237,032.929	40.078929	-104.652925
12,100.00	90.00	0.58	7,160.00	4,353.76	1,470.76	1,272,830.879	3,237,032.992	40.079204	-104.652921
12,200.00	90.00	0.58	7,160.00	4,453.76	1,471.77	1,272,930.879	3,237,033.055	40.079478	-104.652918
12,300.00	90.00	0.58	7,160.00	4,553.75	1,472.79	1,273,030.879	3,237,033.118	40.079753	-104.652914
12,400.00	90.00	0.58	7,160.00	4,653.75	1,473.80	1,273,130.879	3,237,033.181	40.080027	-104.652910
12,500.00	90.00	0.58	7,160.00	4,753.74	1,474.81	1,273,230.879	3,237,033.244	40.080302	-104.652907
12,600.00	90.00	0.58	7,160.00	4,853.74	1,475.82	1,273,330.879	3,237,033.307	40.080576	-104.652903
12,700.00	90.00	0.58	7,160.00	4,953.73	1,476.84	1,273,430.879	3,237,033.370	40.080851	-104.652899
12,800.00	90.00	0.58	7,160.00	5,053.73	1,477.85	1,273,530.879	3,237,033.433	40.081125	-104.652896
12,900.00	90.00	0.58	7,160.00	5,153.72	1,478.86	1,273,630.879	3,237,033.496	40.081400	-104.652892
13,000.00	90.00	0.58	7,160.00	5,253.72	1,479.87	1,273,730.879	3,237,033.559	40.081674	-104.652889
13,100.00	90.00	0.58	7,160.00	5,353.71	1,480.88	1,273,830.880	3,237,033.622	40.081949	-104.652885
13,200.00	90.00	0.58	7,160.00	5,453.71	1,481.90	1,273,930.880	3,237,033.685	40.082223	-104.652881
13,300.00	90.00	0.58	7,160.00	5,553.70	1,482.91	1,274,030.880	3,237,033.748	40.082498	-104.652878
13,400.00	90.00	0.58	7,160.00	5,653.70	1,483.92	1,274,130.880	3,237,033.811	40.082772	-104.652874
13,500.00	90.00	0.58	7,160.00	5,753.69	1,484.93	1,274,230.880	3,237,033.874	40.083047	-104.652870
13,600.00	90.00	0.58	7,160.00	5,853.69	1,485.95	1,274,330.880	3,237,033.937	40.083321	-104.652867
13,700.00	90.00	0.58	7,160.00	5,953.68	1,486.96	1,274,430.880	3,237,034.000	40.083596	-104.652863
13,800.00	90.00	0.58	7,160.00	6,053.68	1,487.97	1,274,530.880	3,237,034.063	40.083870	-104.652859
13,900.00	90.00	0.58	7,160.00	6,153.67	1,488.98	1,274,630.880	3,237,034.126	40.084145	-104.652856
14,000.00	90.00	0.58	7,160.00	6,253.67	1,490.00	1,274,730.880	3,237,034.188	40.084419	-104.652852
14,100.00	90.00	0.58	7,160.00	6,353.66	1,491.01	1,274,830.880	3,237,034.251	40.084694	-104.652849
14,200.00	90.00	0.58	7,160.00	6,453.66	1,492.02	1,274,930.880	3,237,034.314	40.084968	-104.652845
14,300.00	90.00	0.58	7,160.00	6,553.65	1,493.03	1,275,030.880	3,237,034.377	40.085243	-104.652841
14,400.00	90.00	0.58	7,160.00	6,653.65	1,494.04	1,275,130.880	3,237,034.440	40.085517	-104.652838
14,500.00	90.00	0.58	7,160.00	6,753.64	1,495.06	1,275,230.880	3,237,034.503	40.085792	-104.652834
14,600.00	90.00	0.58	7,160.00	6,853.64	1,496.07	1,275,330.880	3,237,034.566	40.086066	-104.652830
14,700.00	90.00	0.58	7,160.00	6,953.63	1,497.08	1,275,430.880	3,237,034.629	40.086341	-104.652827
14,762.09	90.00	0.58	7,160.00	7,015.71	1,497.76	1,275,492.965	3,237,034.718	40.086511	-104.652824
TD at 14762.09 - WARNER 2H-10H-E165 BHL									

Database:	EDM 5000.15 Single User Db	Local Co-ordinate Reference:	Well WARNER 2H-10H-E165
Company:	Crestone Peak Resources	TVD Reference:	WELL @ 4994.00usft (Original Well Elev)
Project:	Sec 10 T1N-R65W	MD Reference:	WELL @ 4994.00usft (Original Well Elev)
Site:	Warner Pad	North Reference:	True
Well:	WARNER 2H-10H-E165	Survey Calculation Method:	Minimum Curvature
Wellbore:	Wellbore #1		
Design:	Plan #3 27Sep18 kjs		

Design Targets									
Target Name									
- hit/miss target	Dip Angle	Dip Dir.	TVD	+N/-S	+E/-W	Northing	Easting	Latitude	Longitude
- Shape	(°)	(°)	(usft)	(usft)	(usft)	(usft)	(usft)		
WARNER 2H-10H-E165	0.00	0.00	7,160.00	12.61	1,426.82	1,268,489.503	3,237,030.259	40.067286	-104.653079
- plan hits target center									
- Point									
WARNER 2H-10H-E165	0.00	0.00	7,160.00	7,015.71	1,497.76	1,275,492.965	3,237,034.718	40.086511	-104.652824
- plan hits target center									
- Point									

Plan Annotations				
Measured Depth	Vertical Depth	Local Coordinates		Comment
(usft)	(usft)	+N/-S (usft)	+E/-W (usft)	
260.00	260.00	0.00	0.00	Start Build 2.00
956.44	949.60	-41.04	73.57	Hold 13.93 Inc, 119.15 Az
6,550.99	6,379.64	-697.07	1,249.66	KOP 8/100
7,758.62	7,160.00	12.61	1,426.82	LP 90 Inc, 0.58 Az
14,762.09	7,160.00	7,015.71	1,497.76	TD at 14762.09