



Crestone Peak Resources

Well Name:

WARNER 2E-10H-E165

Project Name:

Sec 10 T1N-R65W

Pad Name:

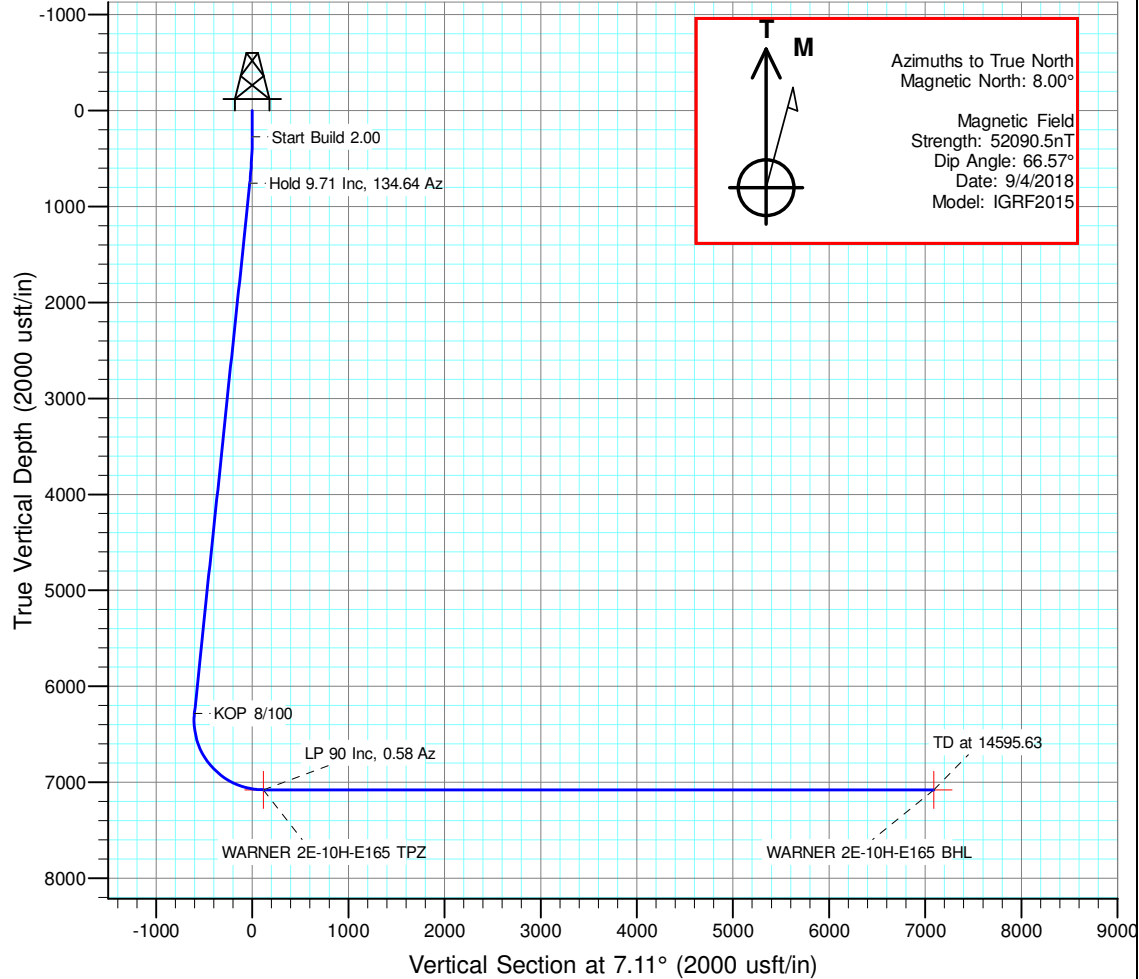
Warner Pad

ANNOTATIONS

MD	Inc	Azi	TVD	+N/-S	+E/-W	Vsect	Departure	Annotation
275.00	0.00	0.00	275.00	0.00	0.00	0.00	0.00	Start Build 2.00
760.40	9.71	134.64	758.08	-28.83	29.19	-24.99	41.02	Hold 9.71 Inc, 134.64 Az
6368.42	9.71	134.64	6285.80	-693.30	702.06	-601.01	986.69	KOP 8/100
7577.60	90.00	0.58	7080.00	16.93	806.89	116.73	1731.01	LP 90 Inc, 0.58 Az
14595.63	90.00	0.58	7080.00	7034.60	878.01	7089.18	8749.05	TD at 14595.63

DESIGN TARGET DETAILS

Name	TVD	+N/-S	+E/-W	Northing	Easting	Latitude	Longitude	Shape
WARNER 2E-10H-E165 BHL	7080.00	7034.60	878.01	1275505.708	3236384.876	40.086563	-104.655146	Point
WARNER 2E-10H-E165 TPZ	7080.00	16.93	806.89	1268487.678	3236380.371	40.067298	-104.655401	Point

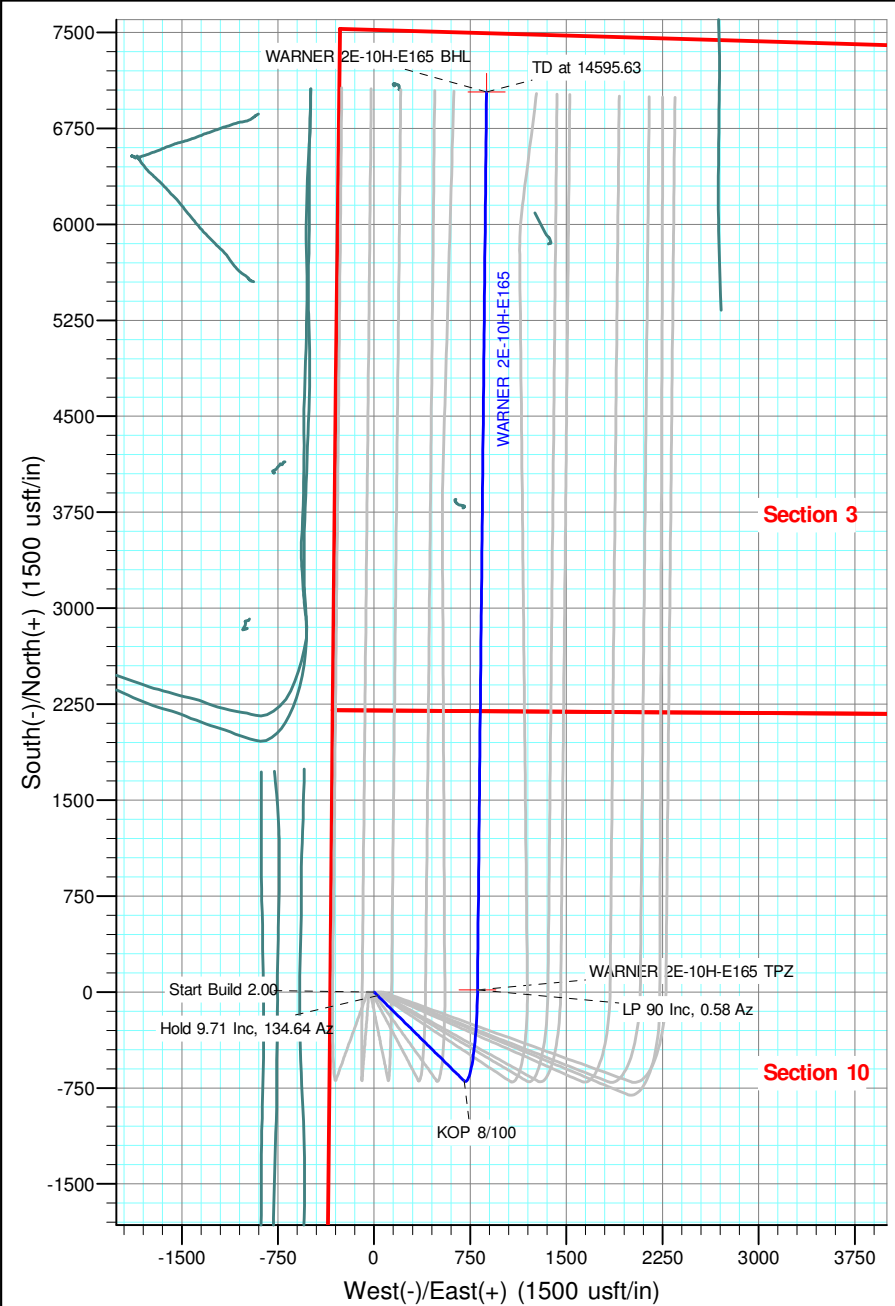


Geodetic Datum:

North American Datum 1983
US State Plane 1983, Colorado Northern Zone

Elevation:

Ground Elevation: 4971.00
KB Elevation: WELL @ 4994.00usft (Original Well Elev)





Crestone Peak Resources

Sec 10 T1N-R65W

Warner Pad

WARNER 2E-10H-E165

Wellbore #1

Plan: Plan #3 27Sep18 kjs

Standard Planning Report - Geographic

28 September, 2018

Database:	EDM 5000.15 Single User Db	Local Co-ordinate Reference:	Well WARNER 2E-10H-E165
Company:	Crestone Peak Resources	TVD Reference:	WELL @ 4994.00usft (Original Well Elev)
Project:	Sec 10 T1N-R65W	MD Reference:	WELL @ 4994.00usft (Original Well Elev)
Site:	Warner Pad	North Reference:	True
Well:	WARNER 2E-10H-E165	Survey Calculation Method:	Minimum Curvature
Wellbore:	Wellbore #1		
Design:	Plan #3 27Sep18 kjs		

Project	Sec 10 T1N-R65W, Wattenberg Field		
Map System:	US State Plane 1983	System Datum:	Mean Sea Level
Geo Datum:	North American Datum 1983		
Map Zone:	Colorado Northern Zone		

Site		Warner Pad			
Site Position:		Northing:	1,268,463.012 usft	Latitude:	40.067253
From:	Lat/Long	Easting:	3,235,523.582 usft	Longitude:	-104.658463
Position Uncertainty:	0.00 usft	Slot Radius:	13-3/16 "	Grid Convergence:	0.54

Well	WARNER 2E-10H-E165					
Well Position	+N/-S	0.00 usft	Northing:	1,268,463.089 usft	Latitude:	40.067252
	+E/-W	0.00 usft	Easting:	3,235,573.682 usft	Longitude:	-104.658284
Position Uncertainty		0.00 usft	Wellhead Elevation:		Ground Level:	4,971.00 usft

Wellbore	Wellbore #1				
Magnetics	Model Name	Sample Date	Declination (°)	Dip Angle (°)	Field Strength (nT)
	IGRF2015	9/4/2018	8.00	66.57	52,090.49116151

Design	Plan #3 27Sep18 kjs			
Audit Notes:				
Version:	Phase:	PLAN	Tie On Depth:	0.00
Vertical Section:	Depth From (TVD) (usft)	+N/-S (usft)	+E/-W (usft)	Direction (°)
	0.00	0.00	0.00	7.11

Plan Survey Tool Program	Date	9/28/2018		
Depth From (usft)	Depth To (usft)	Survey (Wellbore)	Tool Name	Remarks
1	0.00	14,595.63 Plan #3 27Sep18 kjs (Wellbore #	MWD	
			OWSG MWD - Standard	

Plan Sections										
Measured Depth (usft)	Inclination (°)	Azimuth (°)	Vertical Depth (usft)	+N/-S (usft)	+E/-W (usft)	Dogleg Rate (°/100usft)	Build Rate (°/100usft)	Turn Rate (°/100usft)	TFO (°)	Target
0.00	0.00	0.00	0.00	0.00	0.00	0.00	0.00	0.00	0.00	
275.00	0.00	0.00	275.00	0.00	0.00	0.00	0.00	0.00	0.00	
760.40	9.71	134.64	758.08	-28.83	29.19	2.00	2.00	0.00	134.64	
6,368.42	9.71	134.64	6,285.80	-693.30	702.06	0.00	0.00	0.00	0.00	
7,577.60	90.00	0.58	7,080.00	16.93	806.89	8.00	6.64	-11.09	-133.65	WARNER 2E-10H-E1
14,595.63	90.00	0.58	7,080.00	7,034.60	878.01	0.00	0.00	0.00	0.00	WARNER 2E-10H-E1

Database:	EDM 5000.15 Single User Db	Local Co-ordinate Reference:	Well WARNER 2E-10H-E165
Company:	Crestone Peak Resources	TVD Reference:	WELL @ 4994.00usft (Original Well Elev)
Project:	Sec 10 T1N-R65W	MD Reference:	WELL @ 4994.00usft (Original Well Elev)
Site:	Warner Pad	North Reference:	True
Well:	WARNER 2E-10H-E165	Survey Calculation Method:	Minimum Curvature
Wellbore:	Wellbore #1		
Design:	Plan #3 27Sep18 kjs		

Planned Survey									
Measured Depth (usft)	Inclination (°)	Azimuth (°)	Vertical Depth (usft)	+N/-S (usft)	+E/-W (usft)	Map Northing (usft)	Map Easting (usft)	Latitude	Longitude
0.00	0.00	0.00	0.00	0.00	0.00	1,268,463.089	3,235,573.682	40.067252	-104.658284
100.00	0.00	0.00	100.00	0.00	0.00	1,268,463.089	3,235,573.682	40.067252	-104.658284
200.00	0.00	0.00	200.00	0.00	0.00	1,268,463.089	3,235,573.682	40.067252	-104.658284
275.00	0.00	0.00	275.00	0.00	0.00	1,268,463.089	3,235,573.682	40.067252	-104.658284
Start Build 2.00									
300.00	0.50	134.64	300.00	-0.08	0.08	1,268,463.014	3,235,573.760	40.067252	-104.658284
400.00	2.50	134.64	399.96	-1.92	1.94	1,268,461.192	3,235,575.640	40.067247	-104.658277
500.00	4.50	134.64	499.77	-6.21	6.28	1,268,456.944	3,235,580.024	40.067235	-104.658262
600.00	6.50	134.64	599.30	-12.94	13.10	1,268,450.275	3,235,586.907	40.067216	-104.658237
700.00	8.50	134.64	698.44	-22.11	22.39	1,268,441.192	3,235,596.281	40.067191	-104.658204
760.40	9.71	134.64	758.08	-28.83	29.19	1,268,434.542	3,235,603.144	40.067173	-104.658180
Hold 9.71 Inc, 134.64 Az									
800.00	9.71	134.64	797.11	-33.52	33.94	1,268,429.895	3,235,607.940	40.067160	-104.658163
900.00	9.71	134.64	895.68	-45.37	45.94	1,268,418.161	3,235,620.050	40.067127	-104.658120
1,000.00	9.71	134.64	994.25	-57.22	57.94	1,268,406.427	3,235,632.160	40.067095	-104.658077
1,100.00	9.71	134.64	1,092.82	-69.06	69.94	1,268,394.693	3,235,644.270	40.067062	-104.658034
1,200.00	9.71	134.64	1,191.39	-80.91	81.93	1,268,382.958	3,235,656.380	40.067030	-104.657992
1,300.00	9.71	134.64	1,289.95	-92.76	93.93	1,268,371.224	3,235,668.491	40.066997	-104.657949
1,400.00	9.71	134.64	1,388.52	-104.61	105.93	1,268,359.490	3,235,680.601	40.066965	-104.657906
1,500.00	9.71	134.64	1,487.09	-116.46	117.93	1,268,347.756	3,235,692.711	40.066932	-104.657863
1,600.00	9.71	134.64	1,585.66	-128.31	129.93	1,268,336.021	3,235,704.821	40.066900	-104.657820
1,700.00	9.71	134.64	1,684.23	-140.16	141.93	1,268,324.287	3,235,716.931	40.066867	-104.657777
1,800.00	9.71	134.64	1,782.79	-152.00	153.92	1,268,312.553	3,235,729.042	40.066835	-104.657734
1,900.00	9.71	134.64	1,881.36	-163.85	165.92	1,268,300.819	3,235,741.152	40.066802	-104.657691
2,000.00	9.71	134.64	1,979.93	-175.70	177.92	1,268,289.085	3,235,753.262	40.066770	-104.657649
2,100.00	9.71	134.64	2,078.50	-187.55	189.92	1,268,277.350	3,235,765.372	40.066737	-104.657606
2,200.00	9.71	134.64	2,177.07	-199.40	201.92	1,268,265.616	3,235,777.482	40.066705	-104.657563
2,300.00	9.71	134.64	2,275.63	-211.25	213.92	1,268,253.882	3,235,789.593	40.066672	-104.657520
2,400.00	9.71	134.64	2,374.20	-223.10	225.91	1,268,242.148	3,235,801.703	40.066640	-104.657477
2,500.00	9.71	134.64	2,472.77	-234.94	237.91	1,268,230.413	3,235,813.813	40.066607	-104.657434
2,600.00	9.71	134.64	2,571.34	-246.79	249.91	1,268,218.679	3,235,825.923	40.066575	-104.657391
2,700.00	9.71	134.64	2,669.91	-258.64	261.91	1,268,206.945	3,235,838.033	40.066542	-104.657348
2,800.00	9.71	134.64	2,768.47	-270.49	273.91	1,268,195.211	3,235,850.144	40.066509	-104.657306
2,900.00	9.71	134.64	2,867.04	-282.34	285.90	1,268,183.476	3,235,862.254	40.066477	-104.657263
3,000.00	9.71	134.64	2,965.61	-294.19	297.90	1,268,171.742	3,235,874.364	40.066444	-104.657220
3,100.00	9.71	134.64	3,064.18	-306.04	309.90	1,268,160.008	3,235,886.474	40.066412	-104.657177
3,200.00	9.71	134.64	3,162.75	-317.89	321.90	1,268,148.274	3,235,898.584	40.066379	-104.657134
3,300.00	9.71	134.64	3,261.31	-329.73	333.90	1,268,136.540	3,235,910.695	40.066347	-104.657091
3,400.00	9.71	134.64	3,359.88	-341.58	345.90	1,268,124.805	3,235,922.805	40.066314	-104.657048
3,500.00	9.71	134.64	3,458.45	-353.43	357.89	1,268,113.071	3,235,934.915	40.066282	-104.657006
3,600.00	9.71	134.64	3,557.02	-365.28	369.89	1,268,101.337	3,235,947.025	40.066249	-104.656963
3,700.00	9.71	134.64	3,655.59	-377.13	381.89	1,268,089.603	3,235,959.135	40.066217	-104.656920
3,800.00	9.71	134.64	3,754.15	-388.98	393.89	1,268,077.868	3,235,971.246	40.066184	-104.656877
3,900.00	9.71	134.64	3,852.72	-400.83	405.89	1,268,066.134	3,235,983.356	40.066152	-104.656834
4,000.00	9.71	134.64	3,951.29	-412.67	417.89	1,268,054.400	3,235,995.466	40.066119	-104.656791
4,100.00	9.71	134.64	4,049.86	-424.52	429.88	1,268,042.666	3,236,007.576	40.066087	-104.656748
4,200.00	9.71	134.64	4,148.43	-436.37	441.88	1,268,030.931	3,236,019.686	40.066054	-104.656705
4,300.00	9.71	134.64	4,246.99	-448.22	453.88	1,268,019.197	3,236,031.797	40.066022	-104.656663
4,400.00	9.71	134.64	4,345.56	-460.07	465.88	1,268,007.463	3,236,043.907	40.065989	-104.656620
4,500.00	9.71	134.64	4,444.13	-471.92	477.88	1,267,995.729	3,236,056.017	40.065956	-104.656577
4,600.00	9.71	134.64	4,542.70	-483.77	489.88	1,267,983.995	3,236,068.127	40.065924	-104.656534
4,700.00	9.71	134.64	4,641.27	-495.62	501.87	1,267,972.260	3,236,080.237	40.065891	-104.656491
4,800.00	9.71	134.64	4,739.83	-507.46	513.87	1,267,960.526	3,236,092.348	40.065859	-104.656448
4,900.00	9.71	134.64	4,838.40	-519.31	525.87	1,267,948.792	3,236,104.458	40.065826	-104.656405

Database:	EDM 5000.15 Single User Db	Local Co-ordinate Reference:	Well WARNER 2E-10H-E165
Company:	Crestone Peak Resources	TVD Reference:	WELL @ 4994.00usft (Original Well Elev)
Project:	Sec 10 T1N-R65W	MD Reference:	WELL @ 4994.00usft (Original Well Elev)
Site:	Warner Pad	North Reference:	True
Well:	WARNER 2E-10H-E165	Survey Calculation Method:	Minimum Curvature
Wellbore:	Wellbore #1		
Design:	Plan #3 27Sep18 kjs		

Planned Survey									
Measured Depth (usft)	Inclination (°)	Azimuth (°)	Vertical Depth (usft)	+N/-S (usft)	+E/-W (usft)	Map Northing (usft)	Map Easting (usft)	Latitude	Longitude
5,000.00	9.71	134.64	4,936.97	-531.16	537.87	1,267,937.058	3,236,116.568	40.065794	-104.656363
5,100.00	9.71	134.64	5,035.54	-543.01	549.87	1,267,925.323	3,236,128.678	40.065761	-104.656320
5,200.00	9.71	134.64	5,134.11	-554.86	561.86	1,267,913.589	3,236,140.788	40.065729	-104.656277
5,300.00	9.71	134.64	5,232.67	-566.71	573.86	1,267,901.855	3,236,152.898	40.065696	-104.656234
5,400.00	9.71	134.64	5,331.24	-578.56	585.86	1,267,890.121	3,236,165.009	40.065664	-104.656191
5,500.00	9.71	134.64	5,429.81	-590.40	597.86	1,267,878.386	3,236,177.119	40.065631	-104.656148
5,600.00	9.71	134.64	5,528.38	-602.25	609.86	1,267,866.652	3,236,189.229	40.065599	-104.656105
5,700.00	9.71	134.64	5,626.95	-614.10	621.86	1,267,854.918	3,236,201.339	40.065566	-104.656062
5,800.00	9.71	134.64	5,725.51	-625.95	633.85	1,267,843.184	3,236,213.449	40.065534	-104.656020
5,900.00	9.71	134.64	5,824.08	-637.80	645.85	1,267,831.450	3,236,225.560	40.065501	-104.655977
6,000.00	9.71	134.64	5,922.65	-649.65	657.85	1,267,819.715	3,236,237.670	40.065469	-104.655934
6,100.00	9.71	134.64	6,021.22	-661.50	669.85	1,267,807.981	3,236,249.780	40.065436	-104.655891
6,200.00	9.71	134.64	6,119.79	-673.35	681.85	1,267,796.247	3,236,261.890	40.065404	-104.655848
6,300.00	9.71	134.64	6,218.35	-685.19	693.85	1,267,784.513	3,236,274.000	40.065371	-104.655805
6,368.42	9.71	134.64	6,285.80	-693.30	702.06	1,267,776.484	3,236,282.287	40.065349	-104.655776
KOP 8/100									
6,400.00	8.17	121.67	6,316.99	-696.35	705.86	1,267,773.471	3,236,286.120	40.065340	-104.655762
6,500.00	7.96	62.07	6,416.16	-696.84	718.05	1,267,773.100	3,236,298.311	40.065339	-104.655719
6,600.00	13.69	30.89	6,514.42	-683.41	730.26	1,267,786.639	3,236,310.399	40.065376	-104.655675
6,700.00	20.95	19.31	6,609.85	-656.34	742.27	1,267,813.824	3,236,322.148	40.065450	-104.655632
6,800.00	28.59	13.61	6,700.59	-616.15	753.83	1,267,854.126	3,236,333.329	40.065561	-104.655591
6,900.00	36.38	10.19	6,784.89	-563.61	764.73	1,267,906.760	3,236,343.725	40.065705	-104.655552
7,000.00	44.24	7.83	6,861.09	-499.76	774.74	1,267,970.702	3,236,353.133	40.065880	-104.655516
7,100.00	52.13	6.07	6,927.72	-425.84	783.68	1,268,044.708	3,236,361.371	40.066083	-104.655484
7,200.00	60.04	4.64	6,983.47	-343.28	791.37	1,268,127.336	3,236,368.277	40.066310	-104.655457
7,300.00	67.97	3.43	7,027.27	-253.69	797.66	1,268,216.979	3,236,373.718	40.066556	-104.655434
7,400.00	75.90	2.35	7,058.26	-158.82	802.43	1,268,311.893	3,236,377.588	40.066816	-104.655417
7,500.00	83.84	1.34	7,075.83	-60.51	805.59	1,268,410.228	3,236,379.810	40.067086	-104.655406
7,577.60	90.00	0.58	7,080.00	16.93	806.89	1,268,487.678	3,236,380.372	40.067298	-104.655401
LP 90 Inc, 0.58 Az - WARNER 2E-10H-E165 TPZ									
7,600.00	90.00	0.58	7,080.00	39.33	807.11	1,268,510.076	3,236,380.386	40.067360	-104.655400
7,700.00	90.00	0.58	7,080.00	139.32	808.13	1,268,610.076	3,236,380.449	40.067634	-104.655397
7,800.00	90.00	0.58	7,080.00	239.32	809.14	1,268,710.076	3,236,380.512	40.067909	-104.655393
7,900.00	90.00	0.58	7,080.00	339.31	810.15	1,268,810.076	3,236,380.575	40.068183	-104.655390
8,000.00	90.00	0.58	7,080.00	439.31	811.16	1,268,910.076	3,236,380.638	40.068458	-104.655386
8,100.00	90.00	0.58	7,080.00	539.30	812.17	1,269,010.076	3,236,380.701	40.068732	-104.655382
8,200.00	90.00	0.58	7,080.00	639.30	813.19	1,269,110.076	3,236,380.764	40.069007	-104.655379
8,300.00	90.00	0.58	7,080.00	739.29	814.20	1,269,210.076	3,236,380.827	40.069281	-104.655375
8,400.00	90.00	0.58	7,080.00	839.29	815.21	1,269,310.076	3,236,380.890	40.069556	-104.655371
8,500.00	90.00	0.58	7,080.00	939.28	816.22	1,269,410.076	3,236,380.953	40.069830	-104.655368
8,600.00	90.00	0.58	7,080.00	1,039.28	817.24	1,269,510.076	3,236,381.017	40.070105	-104.655364
8,700.00	90.00	0.58	7,080.00	1,139.27	818.25	1,269,610.076	3,236,381.080	40.070379	-104.655361
8,800.00	90.00	0.58	7,080.00	1,239.27	819.26	1,269,710.076	3,236,381.143	40.070654	-104.655357
8,900.00	90.00	0.58	7,080.00	1,339.26	820.27	1,269,810.076	3,236,381.206	40.070928	-104.655353
9,000.00	90.00	0.58	7,080.00	1,439.26	821.29	1,269,910.076	3,236,381.269	40.071203	-104.655350
9,100.00	90.00	0.58	7,080.00	1,539.25	822.30	1,270,010.076	3,236,381.332	40.071477	-104.655346
9,200.00	90.00	0.58	7,080.00	1,639.25	823.31	1,270,110.076	3,236,381.395	40.071752	-104.655342
9,300.00	90.00	0.58	7,080.00	1,739.24	824.32	1,270,210.076	3,236,381.458	40.072026	-104.655339
9,400.00	90.00	0.58	7,080.00	1,839.24	825.33	1,270,310.076	3,236,381.521	40.072301	-104.655335
9,500.00	90.00	0.58	7,080.00	1,939.23	826.35	1,270,410.076	3,236,381.584	40.072575	-104.655332
9,600.00	90.00	0.58	7,080.00	2,039.23	827.36	1,270,510.076	3,236,381.647	40.072850	-104.655328
9,700.00	90.00	0.58	7,080.00	2,139.22	828.37	1,270,610.076	3,236,381.710	40.073124	-104.655324
9,800.00	90.00	0.58	7,080.00	2,239.21	829.38	1,270,710.076	3,236,381.773	40.073399	-104.655321
9,900.00	90.00	0.58	7,080.00	2,339.21	830.40	1,270,810.076	3,236,381.837	40.073673	-104.655317

Database:	EDM 5000.15 Single User Db	Local Co-ordinate Reference:	Well WARNER 2E-10H-E165
Company:	Crestone Peak Resources	TVD Reference:	WELL @ 4994.00usft (Original Well Elev)
Project:	Sec 10 T1N-R65W	MD Reference:	WELL @ 4994.00usft (Original Well Elev)
Site:	Warner Pad	North Reference:	True
Well:	WARNER 2E-10H-E165	Survey Calculation Method:	Minimum Curvature
Wellbore:	Wellbore #1		
Design:	Plan #3 27Sep18 kjs		

Planned Survey									
Measured Depth (usft)	Inclination (°)	Azimuth (°)	Vertical Depth (usft)	+N/-S (usft)	+E/-W (usft)	Map Northing (usft)	Map Easting (usft)	Latitude	Longitude
10,000.00	90.00	0.58	7,080.00	2,439.20	831.41	1,270,910.076	3,236,381.900	40.073948	-104.655313
10,100.00	90.00	0.58	7,080.00	2,539.20	832.42	1,271,010.076	3,236,381.963	40.074222	-104.655310
10,200.00	90.00	0.58	7,080.00	2,639.19	833.43	1,271,110.076	3,236,382.026	40.074497	-104.655306
10,300.00	90.00	0.58	7,080.00	2,739.19	834.44	1,271,210.076	3,236,382.089	40.074771	-104.655302
10,400.00	90.00	0.58	7,080.00	2,839.18	835.46	1,271,310.076	3,236,382.152	40.075046	-104.655299
10,500.00	90.00	0.58	7,080.00	2,939.18	836.47	1,271,410.076	3,236,382.215	40.075320	-104.655295
10,600.00	90.00	0.58	7,080.00	3,039.17	837.48	1,271,510.076	3,236,382.278	40.075595	-104.655292
10,700.00	90.00	0.58	7,080.00	3,139.17	838.49	1,271,610.076	3,236,382.341	40.075869	-104.655288
10,800.00	90.00	0.58	7,080.00	3,239.16	839.51	1,271,710.076	3,236,382.404	40.076144	-104.655284
10,900.00	90.00	0.58	7,080.00	3,339.16	840.52	1,271,810.076	3,236,382.467	40.076419	-104.655281
11,000.00	90.00	0.58	7,080.00	3,439.15	841.53	1,271,910.075	3,236,382.530	40.076693	-104.655277
11,100.00	90.00	0.58	7,080.00	3,539.15	842.54	1,272,010.075	3,236,382.593	40.076968	-104.655273
11,200.00	90.00	0.58	7,080.00	3,639.14	843.56	1,272,110.075	3,236,382.656	40.077242	-104.655270
11,300.00	90.00	0.58	7,080.00	3,739.14	844.57	1,272,210.075	3,236,382.720	40.077517	-104.655266
11,400.00	90.00	0.58	7,080.00	3,839.13	845.58	1,272,310.075	3,236,382.783	40.077791	-104.655263
11,500.00	90.00	0.58	7,080.00	3,939.13	846.59	1,272,410.075	3,236,382.846	40.078066	-104.655259
11,600.00	90.00	0.58	7,080.00	4,039.12	847.60	1,272,510.075	3,236,382.909	40.078340	-104.655255
11,700.00	90.00	0.58	7,080.00	4,139.12	848.62	1,272,610.075	3,236,382.972	40.078615	-104.655252
11,800.00	90.00	0.58	7,080.00	4,239.11	849.63	1,272,710.075	3,236,383.035	40.078889	-104.655248
11,900.00	90.00	0.58	7,080.00	4,339.11	850.64	1,272,810.075	3,236,383.098	40.079164	-104.655244
12,000.00	90.00	0.58	7,080.00	4,439.10	851.65	1,272,910.075	3,236,383.161	40.079438	-104.655241
12,100.00	90.00	0.58	7,080.00	4,539.10	852.67	1,273,010.075	3,236,383.224	40.079713	-104.655237
12,200.00	90.00	0.58	7,080.00	4,639.09	853.68	1,273,110.075	3,236,383.287	40.079987	-104.655234
12,300.00	90.00	0.58	7,080.00	4,739.09	854.69	1,273,210.075	3,236,383.350	40.080262	-104.655230
12,400.00	90.00	0.58	7,080.00	4,839.08	855.70	1,273,310.075	3,236,383.413	40.080536	-104.655226
12,500.00	90.00	0.58	7,080.00	4,939.08	856.71	1,273,410.075	3,236,383.476	40.080811	-104.655223
12,600.00	90.00	0.58	7,080.00	5,039.07	857.73	1,273,510.075	3,236,383.540	40.081085	-104.655219
12,700.00	90.00	0.58	7,080.00	5,139.07	858.74	1,273,610.075	3,236,383.603	40.081360	-104.655215
12,800.00	90.00	0.58	7,080.00	5,239.06	859.75	1,273,710.075	3,236,383.666	40.081634	-104.655212
12,900.00	90.00	0.58	7,080.00	5,339.06	860.76	1,273,810.076	3,236,383.729	40.081909	-104.655208
13,000.00	90.00	0.58	7,080.00	5,439.05	861.78	1,273,910.076	3,236,383.792	40.082183	-104.655204
13,100.00	90.00	0.58	7,080.00	5,539.05	862.79	1,274,010.076	3,236,383.855	40.082458	-104.655201
13,200.00	90.00	0.58	7,080.00	5,639.04	863.80	1,274,110.076	3,236,383.918	40.082732	-104.655197
13,300.00	90.00	0.58	7,080.00	5,739.04	864.81	1,274,210.076	3,236,383.981	40.083007	-104.655194
13,400.00	90.00	0.58	7,080.00	5,839.03	865.83	1,274,310.076	3,236,384.044	40.083281	-104.655190
13,500.00	90.00	0.58	7,080.00	5,939.03	866.84	1,274,410.076	3,236,384.107	40.083556	-104.655186
13,600.00	90.00	0.58	7,080.00	6,039.02	867.85	1,274,510.076	3,236,384.170	40.083830	-104.655183
13,700.00	90.00	0.58	7,080.00	6,139.02	868.86	1,274,610.076	3,236,384.233	40.084105	-104.655179
13,800.00	90.00	0.58	7,080.00	6,239.01	869.87	1,274,710.076	3,236,384.296	40.084379	-104.655175
13,900.00	90.00	0.58	7,080.00	6,339.00	870.89	1,274,810.076	3,236,384.359	40.084654	-104.655172
14,000.00	90.00	0.58	7,080.00	6,439.00	871.90	1,274,910.076	3,236,384.423	40.084928	-104.655168
14,100.00	90.00	0.58	7,080.00	6,538.99	872.91	1,275,010.076	3,236,384.486	40.085203	-104.655165
14,200.00	90.00	0.58	7,080.00	6,638.99	873.92	1,275,110.076	3,236,384.549	40.085477	-104.655161
14,300.00	90.00	0.58	7,080.00	6,738.98	874.94	1,275,210.076	3,236,384.612	40.085752	-104.655157
14,400.00	90.00	0.58	7,080.00	6,838.98	875.95	1,275,310.076	3,236,384.675	40.086026	-104.655154
14,500.00	90.00	0.58	7,080.00	6,938.97	876.96	1,275,410.076	3,236,384.738	40.086301	-104.655150
14,595.63	90.00	0.58	7,080.00	7,034.60	878.01	1,275,505.708	3,236,384.876	40.086563	-104.655146
TD at 14595.63 - WARNER 2E-10H-E165 BHL									

Database:	EDM 5000.15 Single User Db	Local Co-ordinate Reference:	Well WARNER 2E-10H-E165
Company:	Crestone Peak Resources	TVD Reference:	WELL @ 4994.00usft (Original Well Elev)
Project:	Sec 10 T1N-R65W	MD Reference:	WELL @ 4994.00usft (Original Well Elev)
Site:	Warner Pad	North Reference:	True
Well:	WARNER 2E-10H-E165	Survey Calculation Method:	Minimum Curvature
Wellbore:	Wellbore #1		
Design:	Plan #3 27Sep18 kjs		

Design Targets									
Target Name									
- hit/miss target	Dip Angle	Dip Dir.	TVD	+N/-S	+E/-W	Northing	Easting	Latitude	Longitude
- Shape	(°)	(°)	(usft)	(usft)	(usft)	(usft)	(usft)		
WARNER 2E-10H-E165	0.00	0.00	7,080.00	16.93	806.89	1,268,487.678	3,236,380.372	40.067298	-104.655401
- plan hits target center									
- Point									
WARNER 2E-10H-E165	0.00	0.00	7,080.00	7,034.60	878.01	1,275,505.708	3,236,384.876	40.086563	-104.655146
- plan hits target center									
- Point									

Plan Annotations				
Measured Depth	Vertical Depth	Local Coordinates		Comment
(usft)	(usft)	+N/-S (usft)	+E/-W (usft)	
275.00	275.00	0.00	0.00	Start Build 2.00
760.40	758.08	-28.83	29.19	Hold 9.71 Inc, 134.64 Az
6,368.42	6,285.80	-693.30	702.06	KOP 8/100
7,577.60	7,080.00	16.93	806.89	LP 90 Inc, 0.58 Az
14,595.63	7,080.00	7,034.60	878.01	TD at 14595.63