



Crestone Peak Resources

Well Name:

WARNER 2K-10H-E165

Project Name:

Sec 10 T1N-R65W

Pad Name:

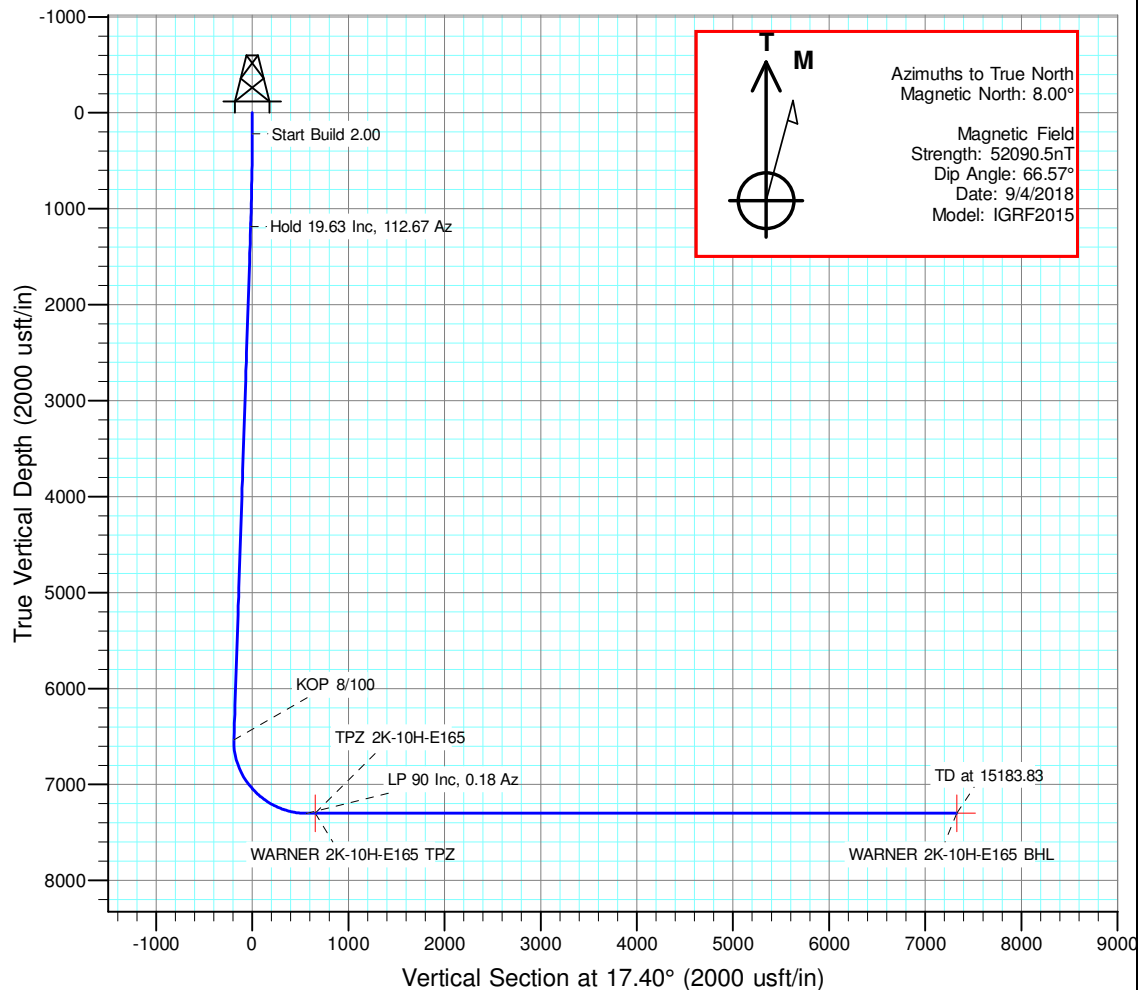
Warner Pad

ANNOTATIONS

MD	Inc	Azi	TVD	+N/-S	+E/-W	VSec	Departure	Annotation
220.00	0.00	0.00	220.00	0.00	0.00	0.00	0.00	Start Build 2.00
1201.45	19.63	112.67	1182.37	-64.15	153.62	-15.28	166.48	Hold 19.63 Inc, 112.67 Az
6881.58	19.63	112.67	6532.41	-799.45	1914.39	-190.42	2074.61	KOP 8/100
8098.84	90.00	0.18	7300.00	-90.00	2169.61	562.89	2894.57	LP 90 Inc, 0.18 Az
8196.34	90.00	0.18	7300.00	7.50	2169.92	656.02	2992.07	TPZ 2K-10H-E165
15183.83	90.00	0.18	7300.00	6994.95	2192.22	7330.43	9979.56	TD at 15183.83

DESIGN TARGET DETAILS

Name	TVD	+N/-S	+E/-W	Northing	Easting	Latitude	Longitude	Shape
WARNER 2K-10H-E165 BHL	7300.00	6994.95	2192.22	1275478.769	3237759.285	40.086453	-104.650235	Point
WARNER 2K-10H-E165 TPZ	7300.00	7.50	2169.61	1268491.418	3237803.019	40.067271	-104.650318	Point

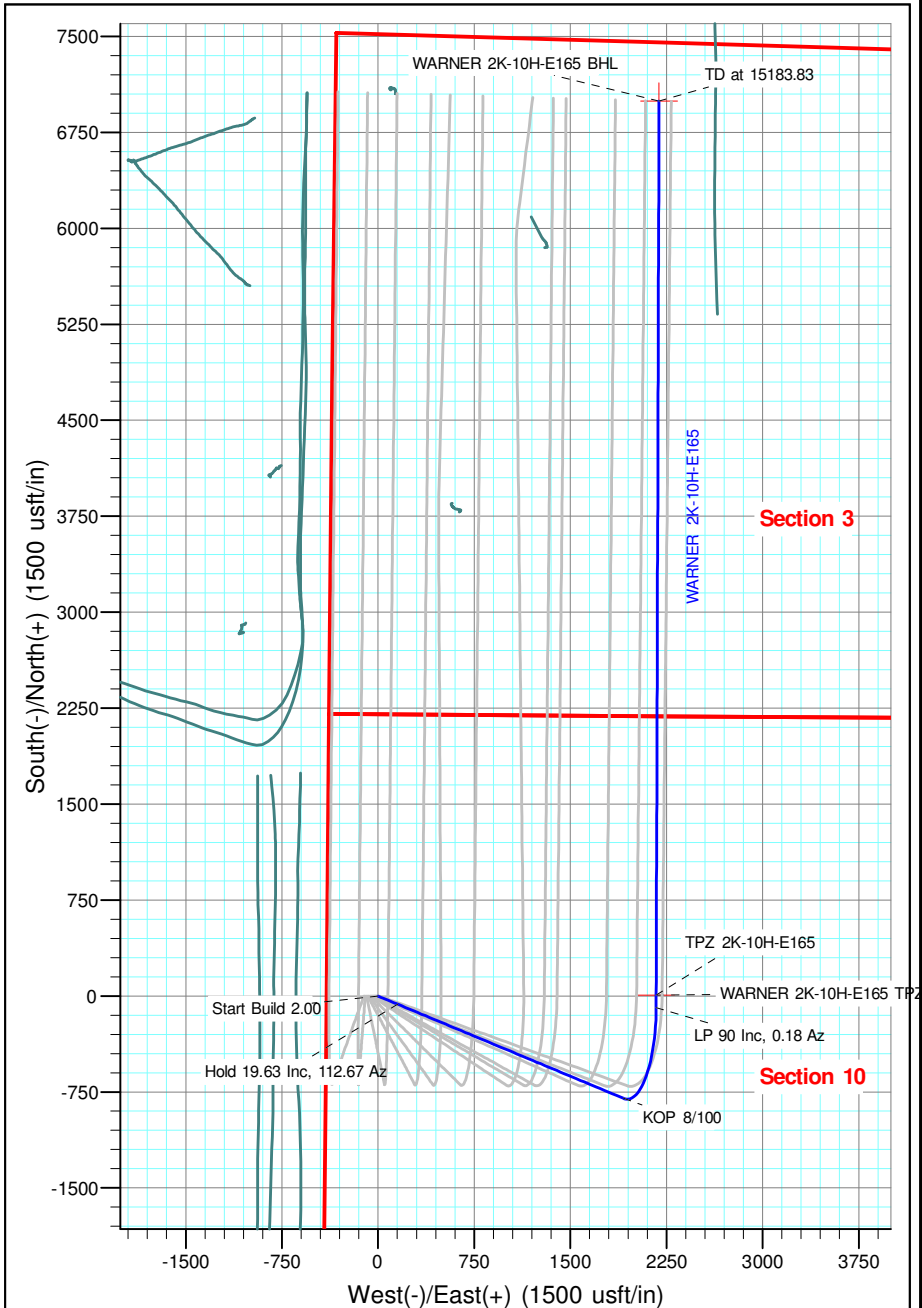


Geodetic Datum:

North American Datum 1983
US State Plane 1983, Colorado Northern Zone

Elevation:

Ground Elevation: 4971.00
KB Elevation: WELL @ 4994.00usft (Original Well Elev)





Crestone Peak Resources

Sec 10 T1N-R65W

Warner Pad

WARNER 2K-10H-E165

Wellbore #1

Plan: Plan #3 27Sep18 kjs

Standard Planning Report - Geographic

02 October, 2018

Database:	EDM 5000.15 Single User Db	Local Co-ordinate Reference:	Well WARNER 2K-10H-E165
Company:	Crestone Peak Resources	TVD Reference:	WELL @ 4994.00usft (Original Well Elev)
Project:	Sec 10 T1N-R65W	MD Reference:	WELL @ 4994.00usft (Original Well Elev)
Site:	Warner Pad	North Reference:	True
Well:	WARNER 2K-10H-E165	Survey Calculation Method:	Minimum Curvature
Wellbore:	Wellbore #1		
Design:	Plan #3 27Sep18 kjs		

Project	Sec 10 T1N-R65W, Wattenberg Field		
Map System:	US State Plane 1983	System Datum:	Mean Sea Level
Geo Datum:	North American Datum 1983		
Map Zone:	Colorado Northern Zone		

Site	Warner Pad				
Site Position:		Northing:	1,268,463.012 usft	Latitude:	40.067253
From:	Lat/Long	Easting:	3,235,523.582 usft	Longitude:	-104.658463
Position Uncertainty:	0.00 usft	Slot Radius:	13-3/16 "	Grid Convergence:	0.54 °

Well	WARNER 2K-10H-E165					
Well Position	+N/-S	0.00 usft	Northing:	1,268,463.319 usft	Latitude:	40.067251
	+E/-W	0.00 usft	Easting:	3,235,633.576 usft	Longitude:	-104.658070
Position Uncertainty		0.00 usft	Wellhead Elevation:		Ground Level:	4,971.00 usft

Wellbore	Wellbore #1				
Magnetics	Model Name	Sample Date	Declination (°)	Dip Angle (°)	Field Strength (nT)
	IGRF2015	9/4/2018	8.00	66.57	52,090.51306590

Design	Plan #3 27Sep18 kjs			
Audit Notes:				
Version:	Phase:	PLAN	Tie On Depth:	0.00
Vertical Section:	Depth From (TVD) (usft)	+N/-S (usft)	+E/-W (usft)	Direction (°)
	0.00	0.00	0.00	17.40

Plan Survey Tool Program	Date	10/2/2018		
Depth From (usft)	Depth To (usft)	Survey (Wellbore)	Tool Name	Remarks
1	0.00	15,183.75 Plan #3 27Sep18 kjs (Wellbore #	MWD	
			OWSG MWD - Standard	

Plan Sections										
Measured Depth (usft)	Inclination (°)	Azimuth (°)	Vertical Depth (usft)	+N/-S (usft)	+E/-W (usft)	Dogleg Rate (°/100usft)	Build Rate (°/100usft)	Turn Rate (°/100usft)	TFO (°)	Target
0.00	0.00	0.00	0.00	0.00	0.00	0.00	0.00	0.00	0.00	
220.00	0.00	0.00	220.00	0.00	0.00	0.00	0.00	0.00	0.00	
1,201.46	19.63	112.67	1,182.37	-64.15	153.62	2.00	2.00	0.00	112.67	
6,881.58	19.63	112.67	6,532.41	-799.45	1,914.39	0.00	0.00	0.00	0.00	
8,098.84	90.00	0.18	7,300.00	-90.00	2,169.61	8.00	5.78	-9.24	-111.30	
15,183.83	90.00	0.18	7,300.00	6,994.95	2,192.22	0.00	0.00	0.00	0.00	WARNER 2K-10H-E1

Database:	EDM 5000.15 Single User Db	Local Co-ordinate Reference:	Well WARNER 2K-10H-E165
Company:	Crestone Peak Resources	TVD Reference:	WELL @ 4994.00usft (Original Well Elev)
Project:	Sec 10 T1N-R65W	MD Reference:	WELL @ 4994.00usft (Original Well Elev)
Site:	Warner Pad	North Reference:	True
Well:	WARNER 2K-10H-E165	Survey Calculation Method:	Minimum Curvature
Wellbore:	Wellbore #1		
Design:	Plan #3 27Sep18 kjs		

Planned Survey									
Measured Depth (usft)	Inclination (°)	Azimuth (°)	Vertical Depth (usft)	+N/-S (usft)	+E/-W (usft)	Map Northing (usft)	Map Easting (usft)	Latitude	Longitude
0.00	0.00	0.00	0.00	0.00	0.00	1,268,463.319	3,235,633.576	40.067251	-104.658070
100.00	0.00	0.00	100.00	0.00	0.00	1,268,463.319	3,235,633.576	40.067251	-104.658070
200.00	0.00	0.00	200.00	0.00	0.00	1,268,463.319	3,235,633.576	40.067251	-104.658070
220.00	0.00	0.00	220.00	0.00	0.00	1,268,463.319	3,235,633.576	40.067251	-104.658070
Start Build 2.00									
300.00	1.60	112.67	299.99	-0.43	1.03	1,268,462.898	3,235,634.611	40.067250	-104.658067
400.00	3.60	112.67	399.88	-2.18	5.22	1,268,461.190	3,235,638.813	40.067245	-104.658052
500.00	5.60	112.67	499.55	-5.27	12.62	1,268,458.170	3,235,646.242	40.067237	-104.658025
600.00	7.60	112.67	598.89	-9.70	23.22	1,268,453.842	3,235,656.889	40.067224	-104.657987
700.00	9.60	112.67	697.76	-15.46	37.02	1,268,448.212	3,235,670.741	40.067209	-104.657938
800.00	11.60	112.67	796.05	-22.55	53.99	1,268,441.285	3,235,687.782	40.067189	-104.657877
900.00	13.60	112.67	893.63	-30.95	74.12	1,268,433.071	3,235,707.989	40.067166	-104.657805
1,000.00	15.60	112.67	990.40	-40.67	97.38	1,268,423.579	3,235,731.339	40.067139	-104.657722
1,100.00	17.60	112.67	1,086.23	-51.68	123.74	1,268,412.821	3,235,757.804	40.067109	-104.657628
1,200.00	19.60	112.67	1,181.00	-63.97	153.17	1,268,400.811	3,235,787.350	40.067075	-104.657523
1,201.45	19.63	112.67	1,182.37	-64.15	153.62	1,268,400.627	3,235,787.803	40.067075	-104.657521
Hold 19.63 Inc, 112.67 Az									
1,300.00	19.63	112.67	1,275.19	-76.91	184.17	1,268,388.160	3,235,818.470	40.067040	-104.657412
1,400.00	19.63	112.67	1,369.38	-89.86	215.17	1,268,375.510	3,235,849.590	40.067004	-104.657301
1,500.00	19.63	112.67	1,463.56	-102.80	246.17	1,268,362.860	3,235,880.710	40.066969	-104.657191
1,600.00	19.63	112.67	1,557.75	-115.75	277.17	1,268,350.210	3,235,911.831	40.066933	-104.657080
1,700.00	19.63	112.67	1,651.94	-128.69	308.17	1,268,337.560	3,235,942.951	40.066898	-104.656969
1,800.00	19.63	112.67	1,746.13	-141.64	339.17	1,268,324.909	3,235,974.071	40.066862	-104.656858
1,900.00	19.63	112.67	1,840.32	-154.58	370.16	1,268,312.259	3,236,005.191	40.066827	-104.656748
2,000.00	19.63	112.67	1,934.51	-167.53	401.16	1,268,299.609	3,236,036.311	40.066791	-104.656637
2,100.00	19.63	112.67	2,028.70	-180.47	432.16	1,268,286.959	3,236,067.431	40.066756	-104.656526
2,200.00	19.63	112.67	2,122.88	-193.42	463.16	1,268,274.309	3,236,098.551	40.066720	-104.656415
2,300.00	19.63	112.67	2,217.07	-206.36	494.16	1,268,261.658	3,236,129.672	40.066685	-104.656305
2,400.00	19.63	112.67	2,311.26	-219.31	525.16	1,268,249.008	3,236,160.792	40.066649	-104.656194
2,500.00	19.63	112.67	2,405.45	-232.25	556.16	1,268,236.358	3,236,191.912	40.066613	-104.656083
2,600.00	19.63	112.67	2,499.64	-245.20	587.15	1,268,223.708	3,236,223.032	40.066578	-104.655972
2,700.00	19.63	112.67	2,593.83	-258.14	618.15	1,268,211.058	3,236,254.152	40.066542	-104.655862
2,800.00	19.63	112.67	2,688.02	-271.09	649.15	1,268,198.407	3,236,285.272	40.066507	-104.655751
2,900.00	19.63	112.67	2,782.21	-284.03	680.15	1,268,185.757	3,236,316.392	40.066471	-104.655640
3,000.00	19.63	112.67	2,876.39	-296.98	711.15	1,268,173.107	3,236,347.513	40.066436	-104.655529
3,100.00	19.63	112.67	2,970.58	-309.92	742.15	1,268,160.457	3,236,378.633	40.066400	-104.655419
3,200.00	19.63	112.67	3,064.77	-322.87	773.15	1,268,147.807	3,236,409.753	40.066365	-104.655308
3,300.00	19.63	112.67	3,158.96	-335.81	804.14	1,268,135.156	3,236,440.873	40.066329	-104.655197
3,400.00	19.63	112.67	3,253.15	-348.76	835.14	1,268,122.506	3,236,471.993	40.066294	-104.655086
3,500.00	19.63	112.67	3,347.34	-361.70	866.14	1,268,109.856	3,236,503.113	40.066258	-104.654976
3,600.00	19.63	112.67	3,441.53	-374.65	897.14	1,268,097.206	3,236,534.234	40.066223	-104.654865
3,700.00	19.63	112.67	3,535.72	-387.59	928.14	1,268,084.556	3,236,565.354	40.066187	-104.654754
3,800.00	19.63	112.67	3,629.90	-400.54	959.14	1,268,071.905	3,236,596.474	40.066151	-104.654643
3,900.00	19.63	112.67	3,724.09	-413.48	990.14	1,268,059.255	3,236,627.594	40.066116	-104.654533
4,000.00	19.63	112.67	3,818.28	-426.43	1,021.14	1,268,046.605	3,236,658.714	40.066080	-104.654422
4,100.00	19.63	112.67	3,912.47	-439.37	1,052.13	1,268,033.955	3,236,689.834	40.066045	-104.654311
4,200.00	19.63	112.67	4,006.66	-452.32	1,083.13	1,268,021.305	3,236,720.954	40.066009	-104.654200
4,300.00	19.63	112.67	4,100.85	-465.26	1,114.13	1,268,008.654	3,236,752.075	40.065974	-104.654090
4,400.00	19.63	112.67	4,195.04	-478.21	1,145.13	1,267,996.004	3,236,783.195	40.065938	-104.653979
4,500.00	19.63	112.67	4,289.22	-491.15	1,176.13	1,267,983.354	3,236,814.315	40.065903	-104.653868
4,600.00	19.63	112.67	4,383.41	-504.10	1,207.13	1,267,970.704	3,236,845.435	40.065867	-104.653757
4,700.00	19.63	112.67	4,477.60	-517.04	1,238.13	1,267,958.054	3,236,876.555	40.065832	-104.653647
4,800.00	19.63	112.67	4,571.79	-529.99	1,269.12	1,267,945.403	3,236,907.675	40.065796	-104.653536
4,900.00	19.63	112.67	4,665.98	-542.93	1,300.12	1,267,932.753	3,236,938.795	40.065761	-104.653425

Database:	EDM 5000.15 Single User Db	Local Co-ordinate Reference:	Well WARNER 2K-10H-E165
Company:	Crestone Peak Resources	TVD Reference:	WELL @ 4994.00usft (Original Well Elev)
Project:	Sec 10 T1N-R65W	MD Reference:	WELL @ 4994.00usft (Original Well Elev)
Site:	Warner Pad	North Reference:	True
Well:	WARNER 2K-10H-E165	Survey Calculation Method:	Minimum Curvature
Wellbore:	Wellbore #1		
Design:	Plan #3 27Sep18 kjs		

Planned Survey									
Measured Depth (usft)	Inclination (°)	Azimuth (°)	Vertical Depth (usft)	+N/-S (usft)	+E/-W (usft)	Map Northing (usft)	Map Easting (usft)	Latitude	Longitude
5,000.00	19.63	112.67	4,760.17	-555.88	1,331.12	1,267,920.103	3,236,969.916	40.065725	-104.653314
5,100.00	19.63	112.67	4,854.36	-568.82	1,362.12	1,267,907.453	3,237,001.036	40.065689	-104.653204
5,200.00	19.63	112.67	4,948.55	-581.77	1,393.12	1,267,894.803	3,237,032.156	40.065654	-104.653093
5,300.00	19.63	112.67	5,042.73	-594.71	1,424.12	1,267,882.152	3,237,063.276	40.065618	-104.652982
5,400.00	19.63	112.67	5,136.92	-607.66	1,455.12	1,267,869.502	3,237,094.396	40.065583	-104.652871
5,500.00	19.63	112.67	5,231.11	-620.60	1,486.11	1,267,856.852	3,237,125.516	40.065547	-104.652761
5,600.00	19.63	112.67	5,325.30	-633.55	1,517.11	1,267,844.202	3,237,156.637	40.065512	-104.652650
5,700.00	19.63	112.67	5,419.49	-646.50	1,548.11	1,267,831.552	3,237,187.757	40.065476	-104.652539
5,800.00	19.63	112.67	5,513.68	-659.44	1,579.11	1,267,818.901	3,237,218.877	40.065441	-104.652428
5,900.00	19.63	112.67	5,607.87	-672.39	1,610.11	1,267,806.251	3,237,249.997	40.065405	-104.652318
6,000.00	19.63	112.67	5,702.06	-685.33	1,641.11	1,267,793.601	3,237,281.117	40.065370	-104.652207
6,100.00	19.63	112.67	5,796.24	-698.28	1,672.11	1,267,780.951	3,237,312.237	40.065334	-104.652096
6,200.00	19.63	112.67	5,890.43	-711.22	1,703.11	1,267,768.301	3,237,343.357	40.065298	-104.651985
6,300.00	19.63	112.67	5,984.62	-724.17	1,734.10	1,267,755.650	3,237,374.478	40.065263	-104.651875
6,400.00	19.63	112.67	6,078.81	-737.11	1,765.10	1,267,743.000	3,237,405.598	40.065227	-104.651764
6,500.00	19.63	112.67	6,173.00	-750.06	1,796.10	1,267,730.350	3,237,436.718	40.065192	-104.651653
6,600.00	19.63	112.67	6,267.19	-763.00	1,827.10	1,267,717.700	3,237,467.838	40.065156	-104.651542
6,700.00	19.63	112.67	6,361.38	-775.95	1,858.10	1,267,705.050	3,237,498.958	40.065121	-104.651431
6,800.00	19.63	112.67	6,455.56	-788.89	1,889.10	1,267,692.399	3,237,530.078	40.065085	-104.651321
6,881.58	19.63	112.67	6,532.41	-799.45	1,914.39	1,267,682.079	3,237,555.467	40.065056	-104.651230
KOP 8/100									
6,900.00	19.14	108.48	6,549.78	-801.60	1,920.11	1,267,679.984	3,237,561.206	40.065050	-104.651210
7,000.00	18.36	83.52	6,644.63	-805.03	1,951.35	1,267,676.856	3,237,592.483	40.065041	-104.651098
7,100.00	20.76	60.56	6,738.99	-794.52	1,982.48	1,267,687.657	3,237,623.512	40.065070	-104.650987
7,200.00	25.47	43.95	6,831.03	-770.29	2,012.89	1,267,712.177	3,237,653.691	40.065136	-104.650878
7,300.00	31.46	32.77	6,918.96	-732.80	2,041.99	1,267,749.939	3,237,682.431	40.065239	-104.650774
7,400.00	38.14	25.00	7,001.07	-682.79	2,069.21	1,267,800.207	3,237,709.173	40.065376	-104.650677
7,500.00	45.19	19.29	7,075.76	-621.22	2,094.02	1,267,862.005	3,237,733.397	40.065545	-104.650589
7,600.00	52.46	14.85	7,141.57	-549.31	2,115.93	1,267,934.128	3,237,754.631	40.065743	-104.650510
7,700.00	59.87	11.21	7,197.22	-468.43	2,134.53	1,268,015.173	3,237,772.461	40.065965	-104.650444
7,800.00	67.36	8.08	7,241.64	-380.18	2,149.45	1,268,103.562	3,237,786.542	40.066207	-104.650390
7,900.00	74.91	5.28	7,273.95	-286.27	2,160.40	1,268,197.575	3,237,796.598	40.066465	-104.650351
8,000.00	82.49	2.67	7,293.53	-188.52	2,167.17	1,268,295.383	3,237,802.434	40.066733	-104.650327
8,098.84	90.00	0.18	7,300.00	-90.00	2,169.61	1,268,393.922	3,237,803.945	40.067004	-104.650318
LP 90 Inc, 0.18 Az									
8,100.00	90.00	0.18	7,300.00	-88.84	2,169.62	1,268,395.081	3,237,803.937	40.067007	-104.650318
8,196.34	90.00	0.18	7,300.00	7.50	2,169.92	1,268,491.420	3,237,803.330	40.067271	-104.650317
TPZ 2K-10H-E165 - WARNER 2K-10H-E165 TPZ									
8,200.00	90.00	0.18	7,300.00	11.16	2,169.93	1,268,495.079	3,237,803.307	40.067281	-104.650317
8,300.00	90.00	0.18	7,300.00	111.16	2,170.25	1,268,595.077	3,237,802.677	40.067556	-104.650316
8,400.00	90.00	0.18	7,300.00	211.16	2,170.57	1,268,695.075	3,237,802.046	40.067830	-104.650315
8,500.00	90.00	0.18	7,300.00	311.16	2,170.89	1,268,795.073	3,237,801.416	40.068105	-104.650314
8,600.00	90.00	0.18	7,300.00	411.16	2,171.21	1,268,895.071	3,237,800.786	40.068379	-104.650312
8,700.00	90.00	0.18	7,300.00	511.16	2,171.53	1,268,995.069	3,237,800.155	40.068654	-104.650311
8,800.00	90.00	0.18	7,300.00	611.16	2,171.85	1,269,095.067	3,237,799.525	40.068929	-104.650310
8,900.00	90.00	0.18	7,300.00	711.15	2,172.17	1,269,195.065	3,237,798.895	40.069203	-104.650309
9,000.00	90.00	0.18	7,300.00	811.15	2,172.49	1,269,295.063	3,237,798.264	40.069478	-104.650308
9,100.00	90.00	0.18	7,300.00	911.15	2,172.81	1,269,395.061	3,237,797.634	40.069752	-104.650307
9,200.00	90.00	0.18	7,300.00	1,011.15	2,173.13	1,269,495.059	3,237,797.004	40.070027	-104.650305
9,300.00	90.00	0.18	7,300.00	1,111.15	2,173.44	1,269,595.057	3,237,796.373	40.070301	-104.650304
9,400.00	90.00	0.18	7,300.00	1,211.15	2,173.76	1,269,695.055	3,237,795.743	40.070576	-104.650303
9,500.00	90.00	0.18	7,300.00	1,311.15	2,174.08	1,269,795.053	3,237,795.113	40.070850	-104.650302
9,600.00	90.00	0.18	7,300.00	1,411.15	2,174.40	1,269,895.051	3,237,794.482	40.071125	-104.650301
9,700.00	90.00	0.18	7,300.00	1,511.15	2,174.72	1,269,995.049	3,237,793.852	40.071399	-104.650300

Database:	EDM 5000.15 Single User Db	Local Co-ordinate Reference:	Well WARNER 2K-10H-E165
Company:	Crestone Peak Resources	TVD Reference:	WELL @ 4994.00usft (Original Well Elev)
Project:	Sec 10 T1N-R65W	MD Reference:	WELL @ 4994.00usft (Original Well Elev)
Site:	Warner Pad	North Reference:	True
Well:	WARNER 2K-10H-E165	Survey Calculation Method:	Minimum Curvature
Wellbore:	Wellbore #1		
Design:	Plan #3 27Sep18 kjs		

Planned Survey									
Measured Depth (usft)	Inclination (°)	Azimuth (°)	Vertical Depth (usft)	+N/-S (usft)	+E/-W (usft)	Map Northing (usft)	Map Easting (usft)	Latitude	Longitude
9,800.00	90.00	0.18	7,300.00	1,611.15	2,175.04	1,270,095.047	3,237,793.222	40.071674	-104.650298
9,900.00	90.00	0.18	7,300.00	1,711.15	2,175.36	1,270,195.045	3,237,792.591	40.071948	-104.650297
10,000.00	90.00	0.18	7,300.00	1,811.15	2,175.68	1,270,295.043	3,237,791.961	40.072223	-104.650296
10,100.00	90.00	0.18	7,300.00	1,911.15	2,176.00	1,270,395.041	3,237,791.331	40.072497	-104.650295
10,200.00	90.00	0.18	7,300.00	2,011.15	2,176.32	1,270,495.039	3,237,790.700	40.072772	-104.650294
10,300.00	90.00	0.18	7,300.00	2,111.15	2,176.64	1,270,595.037	3,237,790.070	40.073046	-104.650292
10,400.00	90.00	0.18	7,300.00	2,211.15	2,176.96	1,270,695.035	3,237,789.440	40.073321	-104.650291
10,500.00	90.00	0.18	7,300.00	2,311.15	2,177.27	1,270,795.033	3,237,788.809	40.073595	-104.650290
10,600.00	90.00	0.18	7,300.00	2,411.15	2,177.59	1,270,895.031	3,237,788.179	40.073870	-104.650289
10,700.00	90.00	0.18	7,300.00	2,511.15	2,177.91	1,270,995.029	3,237,787.549	40.074144	-104.650288
10,800.00	90.00	0.18	7,300.00	2,611.14	2,178.23	1,271,095.027	3,237,786.918	40.074419	-104.650287
10,900.00	90.00	0.18	7,300.00	2,711.14	2,178.55	1,271,195.025	3,237,786.288	40.074693	-104.650285
11,000.00	90.00	0.18	7,300.00	2,811.14	2,178.87	1,271,295.023	3,237,785.657	40.074968	-104.650284
11,100.00	90.00	0.18	7,300.00	2,911.14	2,179.19	1,271,395.021	3,237,785.027	40.075242	-104.650283
11,200.00	90.00	0.18	7,300.00	3,011.14	2,179.51	1,271,495.019	3,237,784.397	40.075517	-104.650282
11,300.00	90.00	0.18	7,300.00	3,111.14	2,179.83	1,271,595.017	3,237,783.766	40.075791	-104.650281
11,400.00	90.00	0.18	7,300.00	3,211.14	2,180.15	1,271,695.015	3,237,783.136	40.076066	-104.650280
11,500.00	90.00	0.18	7,300.00	3,311.14	2,180.47	1,271,795.013	3,237,782.506	40.076340	-104.650278
11,600.00	90.00	0.18	7,300.00	3,411.14	2,180.78	1,271,895.011	3,237,781.875	40.076615	-104.650277
11,700.00	90.00	0.18	7,300.00	3,511.14	2,181.10	1,271,995.009	3,237,781.245	40.076889	-104.650276
11,800.00	90.00	0.18	7,300.00	3,611.14	2,181.42	1,272,095.007	3,237,780.615	40.077164	-104.650275
11,900.00	90.00	0.18	7,300.00	3,711.14	2,181.74	1,272,195.005	3,237,779.984	40.077438	-104.650274
12,000.00	90.00	0.18	7,300.00	3,811.14	2,182.06	1,272,295.003	3,237,779.354	40.077713	-104.650273
12,100.00	90.00	0.18	7,300.00	3,911.14	2,182.38	1,272,395.001	3,237,778.724	40.077988	-104.650271
12,200.00	90.00	0.18	7,300.00	4,011.14	2,182.70	1,272,494.999	3,237,778.093	40.078262	-104.650270
12,300.00	90.00	0.18	7,300.00	4,111.14	2,183.02	1,272,594.997	3,237,777.463	40.078537	-104.650269
12,400.00	90.00	0.18	7,300.00	4,211.14	2,183.34	1,272,694.995	3,237,776.833	40.078811	-104.650268
12,500.00	90.00	0.18	7,300.00	4,311.14	2,183.66	1,272,794.993	3,237,776.202	40.079086	-104.650267
12,600.00	90.00	0.18	7,300.00	4,411.14	2,183.98	1,272,894.991	3,237,775.572	40.079360	-104.650266
12,700.00	90.00	0.18	7,300.00	4,511.14	2,184.29	1,272,994.989	3,237,774.942	40.079635	-104.650264
12,800.00	90.00	0.18	7,300.00	4,611.13	2,184.61	1,273,094.987	3,237,774.311	40.079909	-104.650263
12,900.00	90.00	0.18	7,300.00	4,711.13	2,184.93	1,273,194.985	3,237,773.681	40.080184	-104.650262
13,000.00	90.00	0.18	7,300.00	4,811.13	2,185.25	1,273,294.983	3,237,773.051	40.080458	-104.650261
13,100.00	90.00	0.18	7,300.00	4,911.13	2,185.57	1,273,394.981	3,237,772.420	40.080733	-104.650260
13,200.00	90.00	0.18	7,300.00	5,011.13	2,185.89	1,273,494.979	3,237,771.790	40.081007	-104.650259
13,300.00	90.00	0.18	7,300.00	5,111.13	2,186.21	1,273,594.977	3,237,771.160	40.081282	-104.650257
13,400.00	90.00	0.18	7,300.00	5,211.13	2,186.53	1,273,694.975	3,237,770.529	40.081556	-104.650256
13,500.00	90.00	0.18	7,300.00	5,311.13	2,186.85	1,273,794.974	3,237,769.899	40.081831	-104.650255
13,600.00	90.00	0.18	7,300.00	5,411.13	2,187.17	1,273,894.972	3,237,769.269	40.082105	-104.650254
13,700.00	90.00	0.18	7,300.00	5,511.13	2,187.49	1,273,994.970	3,237,768.638	40.082380	-104.650253
13,800.00	90.00	0.18	7,300.00	5,611.13	2,187.80	1,274,094.968	3,237,768.008	40.082654	-104.650251
13,900.00	90.00	0.18	7,300.00	5,711.13	2,188.12	1,274,194.966	3,237,767.378	40.082929	-104.650250
14,000.00	90.00	0.18	7,300.00	5,811.13	2,188.44	1,274,294.964	3,237,766.747	40.083203	-104.650249
14,100.00	90.00	0.18	7,300.00	5,911.13	2,188.76	1,274,394.962	3,237,766.117	40.083478	-104.650248
14,200.00	90.00	0.18	7,300.00	6,011.13	2,189.08	1,274,494.960	3,237,765.487	40.083752	-104.650247
14,300.00	90.00	0.18	7,300.00	6,111.13	2,189.40	1,274,594.958	3,237,764.856	40.084027	-104.650246
14,400.00	90.00	0.18	7,300.00	6,211.13	2,189.72	1,274,694.956	3,237,764.226	40.084301	-104.650244
14,500.00	90.00	0.18	7,300.00	6,311.13	2,190.04	1,274,794.954	3,237,763.596	40.084576	-104.650243
14,600.00	90.00	0.18	7,300.00	6,411.13	2,190.36	1,274,894.952	3,237,762.965	40.084850	-104.650242
14,700.00	90.00	0.18	7,300.00	6,511.13	2,190.68	1,274,994.950	3,237,762.335	40.085125	-104.650241
14,800.00	90.00	0.18	7,300.00	6,611.12	2,191.00	1,275,094.948	3,237,761.704	40.085399	-104.650240
14,900.00	90.00	0.18	7,300.00	6,711.12	2,191.32	1,275,194.946	3,237,761.074	40.085674	-104.650239
15,000.00	90.00	0.18	7,300.00	6,811.12	2,191.63	1,275,294.944	3,237,760.444	40.085948	-104.650237
15,100.00	90.00	0.18	7,300.00	6,911.12	2,191.95	1,275,394.942	3,237,759.813	40.086223	-104.650236

Database:	EDM 5000.15 Single User Db	Local Co-ordinate Reference:	Well WARNER 2K-10H-E165
Company:	Crestone Peak Resources	TVD Reference:	WELL @ 4994.00usft (Original Well Elev)
Project:	Sec 10 T1N-R65W	MD Reference:	WELL @ 4994.00usft (Original Well Elev)
Site:	Warner Pad	North Reference:	True
Well:	WARNER 2K-10H-E165	Survey Calculation Method:	Minimum Curvature
Wellbore:	Wellbore #1		
Design:	Plan #3 27Sep18 kjs		

Planned Survey									
Measured Depth (usft)	Inclination (°)	Azimuth (°)	Vertical Depth (usft)	+N/-S (usft)	+E/-W (usft)	Map Northing (usft)	Map Easting (usft)	Latitude	Longitude
15,183.83	90.00	0.18	7,300.00	6,994.95	2,192.22	1,275,478.768	3,237,759.285	40.086453	-104.650235
TD at 15183.83 - WARNER 2K-10H-E165 BHL									

Design Targets									
Target Name	Dip Angle (°)	Dip Dir. (°)	TVD (usft)	+N/-S (usft)	+E/-W (usft)	Northing (usft)	Easting (usft)	Latitude	Longitude
- hit/miss target									
- Shape									
WARNER 2K-10H-E165	0.00	0.00	7,300.00	7.50	2,169.61	1,268,491.418	3,237,803.019	40.067271	-104.650318
- plan misses target center by 0.31usft at 8196.34usft MD (7300.00 TVD, 7.50 N, 2169.92 E)									
- Point									
WARNER 2K-10H-E165	0.00	0.00	7,300.00	6,994.95	2,192.22	1,275,478.769	3,237,759.285	40.086453	-104.650235
- plan hits target center									
- Point									

Plan Annotations					
Measured Depth (usft)	Vertical Depth (usft)	Local Coordinates			
		+N/-S (usft)	+E/-W (usft)	Comment	
220.00	220.00	0.00	0.00	Start Build 2.00	
1,201.45	1,182.37	-64.15	153.62	Hold 19.63 Inc, 112.67 Az	
6,881.58	6,532.41	-799.45	1,914.39	KOP 8/100	
8,098.84	7,300.00	-90.00	2,169.61	LP 90 Inc, 0.18 Az	
8,196.34	7,300.00	7.50	2,169.92	TPZ 2K-10H-E165	
15,183.83	7,300.00	6,994.95	2,192.22	TD at 15183.83	