



Crestone Peak Resources

Well Name:

WARNER 2L-10H-E165

Project Name:

Sec 10 T1N-R65W

Pad Name:

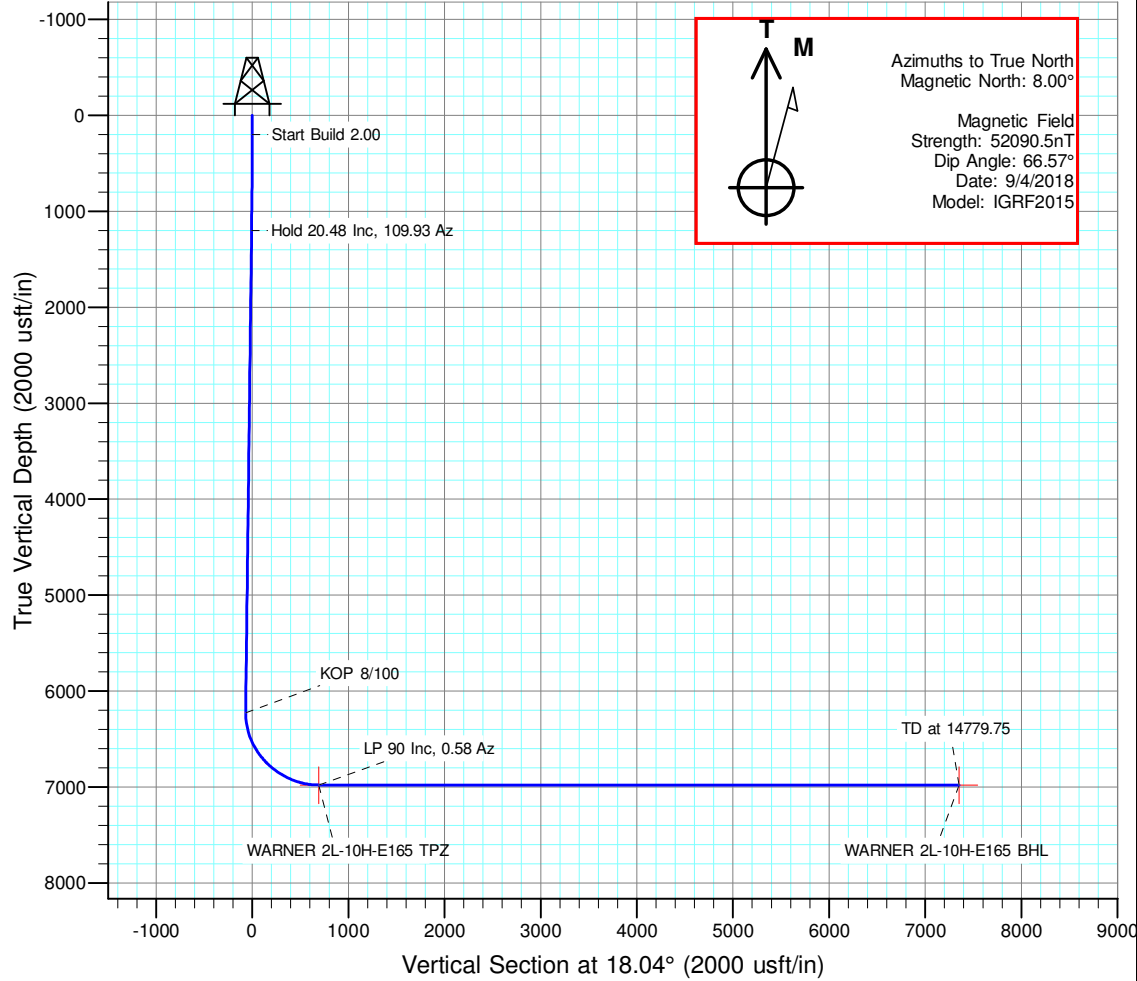
Warner Pad

ANNOTATIONS

MD	Inc	Azi	TVD	+N/-S	+E/-W	VSec	Departure	Annotation
200.00	0.00	0.00	200.00	0.00	0.00	0.00	0.00	Start Build 2.00
1223.78	20.48	109.93	1202.12	-61.69	170.15	-5.96	180.99	Hold 20.48 Inc, 109.93 Az
6586.68	20.48	109.93	6226.21	-701.12	1933.80	-67.78	2056.98	KOP 8/100
7794.87	90.00	0.58	6980.00	7.53	2206.55	690.49	2882.69	LP 90 Inc, 0.58 Az
14779.75	90.00	0.58	6980.00	6992.05	2277.28	7353.56	9867.57	TD at 14779.75

DESIGN TARGET DETAILS

Name	TVD	+N/-S	+E/-W	Northing	Easting	Latitude	Longitude	Shape
WARNER 2L-10H-E165 BHL	6980.00	6992.05	2277.28	1275476.766	3237854.440	40.086445	-104.649895	Point
WARNER 2L-10H-E165 TPZ	6980.00	7.53	2206.55	1268491.887	3237850.035	40.067271	-104.650150	Point

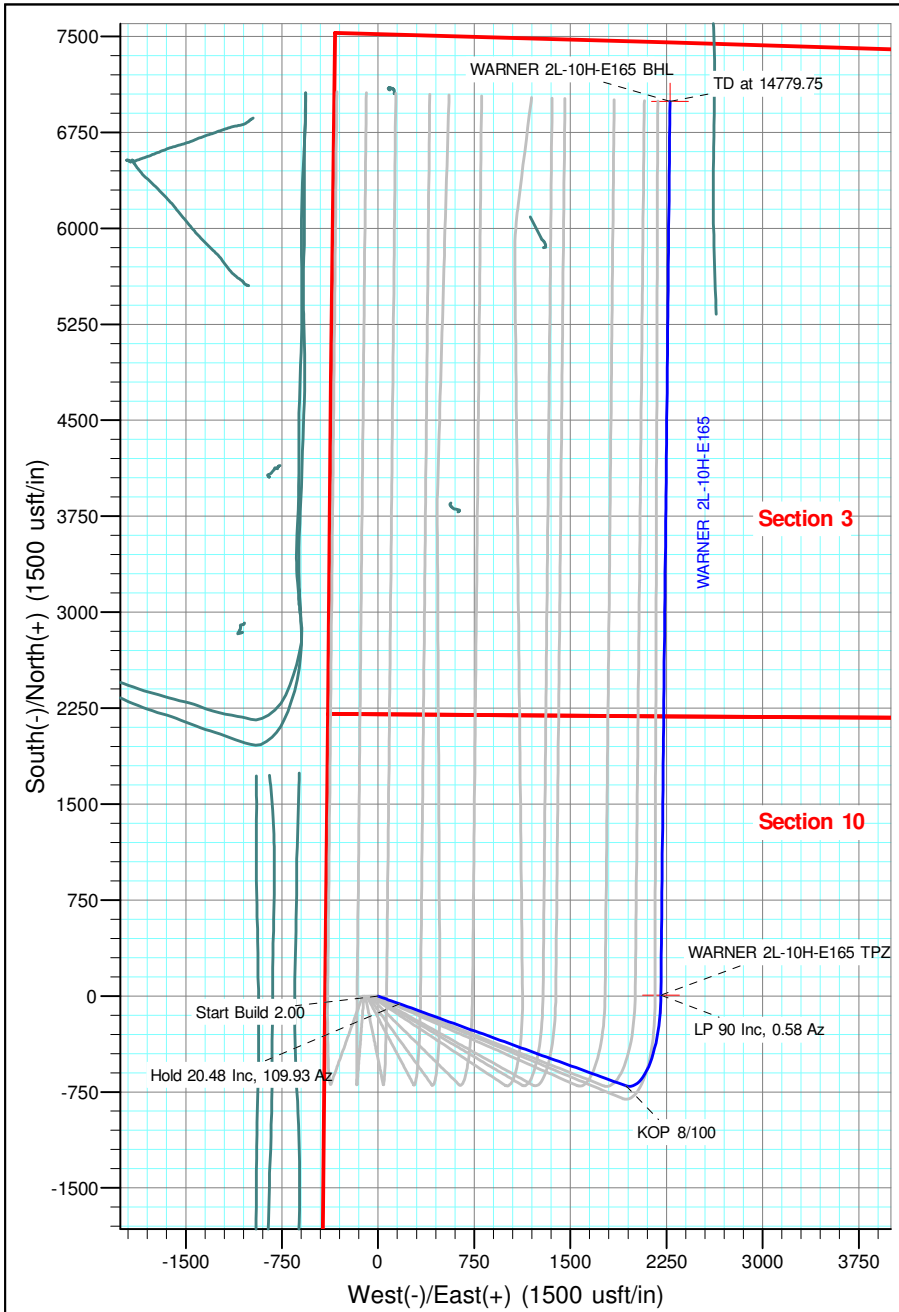


Geodetic Datum:

North American Datum 1983
US State Plane 1983, Colorado Northern Zone

Elevation:

Ground Elevation: 4971.00
KB Elevation: WELL @ 4994.00usft (Original Well Elev)





Crestone Peak Resources

Sec 10 T1N-R65W

Warner Pad

WARNER 2L-10H-E165

Wellbore #1

Plan: Plan #3 27Sep18 kjs

Standard Planning Report - Geographic

28 September, 2018

Database:	EDM 5000.15 Single User Db	Local Co-ordinate Reference:	Well WARNER 2L-10H-E165
Company:	Crestone Peak Resources	TVD Reference:	WELL @ 4994.00usft (Original Well Elev)
Project:	Sec 10 T1N-R65W	MD Reference:	WELL @ 4994.00usft (Original Well Elev)
Site:	Warner Pad	North Reference:	True
Well:	WARNER 2L-10H-E165	Survey Calculation Method:	Minimum Curvature
Wellbore:	Wellbore #1		
Design:	Plan #3 27Sep18 kjs		

Project	Sec 10 T1N-R65W, Wattenberg Field		
Map System:	US State Plane 1983	System Datum:	Mean Sea Level
Geo Datum:	North American Datum 1983		
Map Zone:	Colorado Northern Zone		

Site		Warner Pad			
Site Position:		Northing:	1,268,463.012 usft	Latitude:	40.067253
From:	Lat/Long	Easting:	3,235,523.582 usft	Longitude:	-104.658463
Position Uncertainty:	0.00 usft	Slot Radius:	13-3/16 "	Grid Convergence:	0.54 °

Well	WARNER 2L-10H-E165					
Well Position	+N/-S	0.00 usft	Northing:	1,268,463.406 usft	Latitude:	40.067251
	+E/-W	0.00 usft	Easting:	3,235,643.651 usft	Longitude:	-104.658034
Position Uncertainty		0.00 usft	Wellhead Elevation:		Ground Level:	4,971.00 usft

Wellbore	Wellbore #1				
Magnetics	Model Name	Sample Date	Declination (°)	Dip Angle (°)	Field Strength (nT)
	IGRF2015	9/4/2018	8.00	66.57	52,090.51682040

Design	Plan #3 27Sep18 kjs			
Audit Notes:				
Version:	Phase:	PLAN	Tie On Depth:	0.00
Vertical Section:	Depth From (TVD) (usft)	+N/-S (usft)	+E/-W (usft)	Direction (°)
	0.00	0.00	0.00	18.04

Plan Survey Tool Program	Date	9/28/2018		
Depth From (usft)	Depth To (usft)	Survey (Wellbore)	Tool Name	Remarks
1	0.00	14,779.75 Plan #3 27Sep18 kjs (Wellbore #	MWD	
			OWSG MWD - Standard	

Plan Sections										
Measured Depth (usft)	Inclination (°)	Azimuth (°)	Vertical Depth (usft)	+N/-S (usft)	+E/-W (usft)	Dogleg Rate (°/100usft)	Build Rate (°/100usft)	Turn Rate (°/100usft)	TFO (°)	Target
0.00	0.00	0.00	0.00	0.00	0.00	0.00	0.00	0.00	0.00	
200.00	0.00	0.00	200.00	0.00	0.00	0.00	0.00	0.00	0.00	
1,223.78	20.48	109.93	1,202.12	-61.69	170.15	2.00	2.00	0.00	109.93	
6,586.68	20.48	109.93	6,226.21	-701.12	1,933.80	0.00	0.00	0.00	0.00	
7,794.87	90.00	0.58	6,980.00	7.53	2,206.55	8.00	5.75	-9.05	-108.21	WARNER 2L-10H-E1
14,779.75	90.00	0.58	6,980.00	6,992.05	2,277.28	0.00	0.00	0.00	0.00	WARNER 2L-10H-E1

Database:	EDM 5000.15 Single User Db	Local Co-ordinate Reference:	Well WARNER 2L-10H-E165
Company:	Crestone Peak Resources	TVD Reference:	WELL @ 4994.00usft (Original Well Elev)
Project:	Sec 10 T1N-R65W	MD Reference:	WELL @ 4994.00usft (Original Well Elev)
Site:	Warner Pad	North Reference:	True
Well:	WARNER 2L-10H-E165	Survey Calculation Method:	Minimum Curvature
Wellbore:	Wellbore #1		
Design:	Plan #3 27Sep18 kjs		

Planned Survey									
Measured Depth (usft)	Inclination (°)	Azimuth (°)	Vertical Depth (usft)	+N/-S (usft)	+E/-W (usft)	Map Northing (usft)	Map Easting (usft)	Latitude	Longitude
0.00	0.00	0.00	0.00	0.00	0.00	1,268,463.406	3,235,643.651	40.067251	-104.658034
100.00	0.00	0.00	100.00	0.00	0.00	1,268,463.406	3,235,643.651	40.067251	-104.658034
200.00	0.00	0.00	200.00	0.00	0.00	1,268,463.406	3,235,643.651	40.067251	-104.658034
Start Build 2.00									
300.00	2.00	109.93	299.98	-0.59	1.64	1,268,462.827	3,235,645.298	40.067249	-104.658028
400.00	4.00	109.93	399.84	-2.38	6.56	1,268,461.090	3,235,650.234	40.067245	-104.658011
500.00	6.00	109.93	499.45	-5.35	14.75	1,268,458.197	3,235,658.455	40.067236	-104.657982
600.00	8.00	109.93	598.70	-9.50	26.21	1,268,454.153	3,235,669.951	40.067225	-104.657941
700.00	10.00	109.93	697.47	-14.83	40.92	1,268,448.961	3,235,684.707	40.067210	-104.657888
800.00	12.00	109.93	795.62	-21.34	58.85	1,268,442.628	3,235,702.705	40.067192	-104.657824
900.00	14.00	109.93	893.06	-29.00	80.00	1,268,435.162	3,235,723.924	40.067171	-104.657748
1,000.00	16.00	109.93	989.64	-37.83	104.33	1,268,426.572	3,235,748.338	40.067147	-104.657661
1,100.00	18.00	109.93	1,085.27	-47.79	131.82	1,268,416.869	3,235,775.916	40.067120	-104.657563
1,200.00	20.00	109.93	1,179.82	-58.89	162.42	1,268,406.063	3,235,806.626	40.067089	-104.657454
1,223.78	20.48	109.93	1,202.12	-61.69	170.15	1,268,403.334	3,235,814.384	40.067082	-104.657426
Hold 20.48 Inc, 109.93 Az									
1,300.00	20.48	109.93	1,273.53	-70.78	195.22	1,268,394.484	3,235,839.536	40.067057	-104.657337
1,400.00	20.48	109.93	1,367.21	-82.70	228.11	1,268,382.874	3,235,872.534	40.067024	-104.657219
1,500.00	20.48	109.93	1,460.90	-94.63	260.99	1,268,371.263	3,235,905.532	40.066991	-104.657102
1,600.00	20.48	109.93	1,554.58	-106.55	293.88	1,268,359.653	3,235,938.529	40.066959	-104.656984
1,700.00	20.48	109.93	1,648.26	-118.47	326.77	1,268,348.043	3,235,971.527	40.066926	-104.656867
1,800.00	20.48	109.93	1,741.94	-130.39	359.65	1,268,336.432	3,236,004.525	40.066893	-104.656749
1,900.00	20.48	109.93	1,835.63	-142.32	392.54	1,268,324.822	3,236,037.523	40.066860	-104.656632
2,000.00	20.48	109.93	1,929.31	-154.24	425.42	1,268,313.212	3,236,070.520	40.066828	-104.656514
2,100.00	20.48	109.93	2,022.99	-166.16	458.31	1,268,301.601	3,236,103.518	40.066795	-104.656397
2,200.00	20.48	109.93	2,116.67	-178.09	491.20	1,268,289.991	3,236,136.516	40.066762	-104.656279
2,300.00	20.48	109.93	2,210.35	-190.01	524.08	1,268,278.381	3,236,169.514	40.066729	-104.656162
2,400.00	20.48	109.93	2,304.04	-201.93	556.97	1,268,266.770	3,236,202.511	40.066697	-104.656044
2,500.00	20.48	109.93	2,397.72	-213.86	589.85	1,268,255.160	3,236,235.509	40.066664	-104.655927
2,600.00	20.48	109.93	2,491.40	-225.78	622.74	1,268,243.550	3,236,268.507	40.066631	-104.655809
2,700.00	20.48	109.93	2,585.08	-237.70	655.63	1,268,231.939	3,236,301.505	40.066598	-104.655692
2,800.00	20.48	109.93	2,678.76	-249.63	688.51	1,268,220.329	3,236,334.502	40.066566	-104.655574
2,900.00	20.48	109.93	2,772.45	-261.55	721.40	1,268,208.719	3,236,367.500	40.066533	-104.655457
3,000.00	20.48	109.93	2,866.13	-273.47	754.28	1,268,197.108	3,236,400.498	40.066500	-104.655339
3,100.00	20.48	109.93	2,959.81	-285.40	787.17	1,268,185.498	3,236,433.496	40.066468	-104.655222
3,200.00	20.48	109.93	3,053.49	-297.32	820.06	1,268,173.888	3,236,466.493	40.066435	-104.655104
3,300.00	20.48	109.93	3,147.18	-309.24	852.94	1,268,162.277	3,236,499.491	40.066402	-104.654987
3,400.00	20.48	109.93	3,240.86	-321.16	885.83	1,268,150.667	3,236,532.489	40.066369	-104.654869
3,500.00	20.48	109.93	3,334.54	-333.09	918.71	1,268,139.057	3,236,565.487	40.066337	-104.654752
3,600.00	20.48	109.93	3,428.22	-345.01	951.60	1,268,127.446	3,236,598.484	40.066304	-104.654634
3,700.00	20.48	109.93	3,521.90	-356.93	984.49	1,268,115.836	3,236,631.482	40.066271	-104.654517
3,800.00	20.48	109.93	3,615.59	-368.86	1,017.37	1,268,104.226	3,236,664.480	40.066238	-104.654399
3,900.00	20.48	109.93	3,709.27	-380.78	1,050.26	1,268,092.615	3,236,697.477	40.066206	-104.654282
4,000.00	20.48	109.93	3,802.95	-392.70	1,083.14	1,268,081.005	3,236,730.475	40.066173	-104.654164
4,100.00	20.48	109.93	3,896.63	-404.63	1,116.03	1,268,069.395	3,236,763.473	40.066140	-104.654047
4,200.00	20.48	109.93	3,990.31	-416.55	1,148.92	1,268,057.784	3,236,796.471	40.066107	-104.653929
4,300.00	20.48	109.93	4,084.00	-428.47	1,181.80	1,268,046.174	3,236,829.468	40.066075	-104.653812
4,400.00	20.48	109.93	4,177.68	-440.40	1,214.69	1,268,034.564	3,236,862.466	40.066042	-104.653694
4,500.00	20.48	109.93	4,271.36	-452.32	1,247.57	1,268,022.954	3,236,895.464	40.066009	-104.653577
4,600.00	20.48	109.93	4,365.04	-464.24	1,280.46	1,268,011.343	3,236,928.462	40.065977	-104.653459
4,700.00	20.48	109.93	4,458.73	-476.16	1,313.35	1,267,999.733	3,236,961.459	40.065944	-104.653342
4,800.00	20.48	109.93	4,552.41	-488.09	1,346.23	1,267,988.123	3,236,994.457	40.065911	-104.653224
4,900.00	20.48	109.93	4,646.09	-500.01	1,379.12	1,267,976.512	3,237,027.455	40.065878	-104.653107
5,000.00	20.48	109.93	4,739.77	-511.93	1,412.00	1,267,964.902	3,237,060.453	40.065846	-104.652989

Database:	EDM 5000.15 Single User Db	Local Co-ordinate Reference:	Well WARNER 2L-10H-E165
Company:	Crestone Peak Resources	TVD Reference:	WELL @ 4994.00usft (Original Well Elev)
Project:	Sec 10 T1N-R65W	MD Reference:	WELL @ 4994.00usft (Original Well Elev)
Site:	Warner Pad	North Reference:	True
Well:	WARNER 2L-10H-E165	Survey Calculation Method:	Minimum Curvature
Wellbore:	Wellbore #1		
Design:	Plan #3 27Sep18 kjs		

Planned Survey									
Measured Depth (usft)	Inclination (°)	Azimuth (°)	Vertical Depth (usft)	+N/-S (usft)	+E/-W (usft)	Map Northing (usft)	Map Easting (usft)	Latitude	Longitude
5,100.00	20.48	109.93	4,833.45	-523.86	1,444.89	1,267,953.292	3,237,093.450	40.065813	-104.652872
5,200.00	20.48	109.93	4,927.14	-535.78	1,477.78	1,267,941.681	3,237,126.448	40.065780	-104.652754
5,300.00	20.48	109.93	5,020.82	-547.70	1,510.66	1,267,930.071	3,237,159.446	40.065747	-104.652637
5,400.00	20.48	109.93	5,114.50	-559.63	1,543.55	1,267,918.461	3,237,192.444	40.065715	-104.652519
5,500.00	20.48	109.93	5,208.18	-571.55	1,576.43	1,267,906.850	3,237,225.441	40.065682	-104.652402
5,600.00	20.48	109.93	5,301.87	-583.47	1,609.32	1,267,895.240	3,237,258.439	40.065649	-104.652284
5,700.00	20.48	109.93	5,395.55	-595.40	1,642.21	1,267,883.630	3,237,291.437	40.065616	-104.652167
5,800.00	20.48	109.93	5,489.23	-607.32	1,675.09	1,267,872.019	3,237,324.435	40.065584	-104.652049
5,900.00	20.48	109.93	5,582.91	-619.24	1,707.98	1,267,860.409	3,237,357.432	40.065551	-104.651932
6,000.00	20.48	109.93	5,676.59	-631.17	1,740.86	1,267,848.799	3,237,390.430	40.065518	-104.651814
6,100.00	20.48	109.93	5,770.28	-643.09	1,773.75	1,267,837.188	3,237,423.428	40.065485	-104.651697
6,200.00	20.48	109.93	5,863.96	-655.01	1,806.64	1,267,825.578	3,237,456.426	40.065453	-104.651579
6,300.00	20.48	109.93	5,957.64	-666.93	1,839.52	1,267,813.968	3,237,489.423	40.065420	-104.651462
6,400.00	20.48	109.93	6,051.32	-678.86	1,872.41	1,267,802.357	3,237,522.421	40.065387	-104.651344
6,500.00	20.48	109.93	6,145.00	-690.78	1,905.29	1,267,790.747	3,237,555.419	40.065355	-104.651227
6,586.68	20.48	109.93	6,226.21	-701.12	1,933.80	1,267,780.683	3,237,584.022	40.065326	-104.651125
KOP 8/100									
6,600.00	20.17	106.99	6,238.70	-702.58	1,938.19	1,267,779.260	3,237,588.421	40.065322	-104.651109
6,700.00	19.55	83.36	6,332.90	-705.69	1,971.35	1,267,776.467	3,237,621.609	40.065314	-104.650991
6,800.00	21.93	61.64	6,426.56	-694.87	2,004.45	1,267,787.601	3,237,654.610	40.065343	-104.650873
6,900.00	26.50	45.53	6,517.83	-670.33	2,036.86	1,267,812.447	3,237,686.783	40.065411	-104.650757
7,000.00	32.36	34.37	6,604.96	-632.55	2,067.94	1,267,850.520	3,237,717.502	40.065514	-104.650646
7,100.00	38.91	26.46	6,686.23	-582.26	2,097.08	1,267,901.079	3,237,746.168	40.065652	-104.650542
7,200.00	45.86	20.57	6,760.08	-520.45	2,123.73	1,267,963.141	3,237,772.223	40.065822	-104.650446
7,300.00	53.05	15.95	6,825.06	-448.32	2,147.35	1,268,035.497	3,237,795.161	40.066020	-104.650362
7,400.00	60.39	12.13	6,879.90	-367.26	2,167.49	1,268,116.739	3,237,814.535	40.066243	-104.650290
7,500.00	67.82	8.84	6,923.55	-278.87	2,183.77	1,268,205.286	3,237,829.968	40.066485	-104.650232
7,600.00	75.32	5.88	6,955.15	-184.85	2,195.85	1,268,299.414	3,237,841.159	40.066743	-104.650189
7,700.00	82.84	3.12	6,974.08	-87.04	2,203.51	1,268,397.291	3,237,847.891	40.067012	-104.650161
7,794.87	90.00	0.58	6,980.00	7.53	2,206.55	1,268,491.887	3,237,850.035	40.067271	-104.650150
LP 90 Inc, 0.58 Az - WARNER 2L-10H-E165 TPZ									
7,800.00	90.00	0.58	6,980.00	12.66	2,206.61	1,268,497.013	3,237,850.038	40.067286	-104.650150
7,900.00	90.00	0.58	6,980.00	112.65	2,207.62	1,268,597.013	3,237,850.101	40.067560	-104.650146
8,000.00	90.00	0.58	6,980.00	212.65	2,208.63	1,268,697.013	3,237,850.164	40.067835	-104.650143
8,100.00	90.00	0.58	6,980.00	312.64	2,209.64	1,268,797.013	3,237,850.227	40.068109	-104.650139
8,200.00	90.00	0.58	6,980.00	412.64	2,210.66	1,268,897.013	3,237,850.290	40.068384	-104.650135
8,300.00	90.00	0.58	6,980.00	512.63	2,211.67	1,268,997.013	3,237,850.352	40.068658	-104.650132
8,400.00	90.00	0.58	6,980.00	612.62	2,212.68	1,269,097.013	3,237,850.415	40.068933	-104.650128
8,500.00	90.00	0.58	6,980.00	712.62	2,213.69	1,269,197.013	3,237,850.478	40.069207	-104.650125
8,600.00	90.00	0.58	6,980.00	812.61	2,214.70	1,269,297.013	3,237,850.541	40.069482	-104.650121
8,700.00	90.00	0.58	6,980.00	912.61	2,215.72	1,269,397.013	3,237,850.604	40.069756	-104.650117
8,800.00	90.00	0.58	6,980.00	1,012.60	2,216.73	1,269,497.013	3,237,850.666	40.070031	-104.650114
8,900.00	90.00	0.58	6,980.00	1,112.60	2,217.74	1,269,597.012	3,237,850.729	40.070305	-104.650110
9,000.00	90.00	0.58	6,980.00	1,212.59	2,218.75	1,269,697.012	3,237,850.792	40.070580	-104.650106
9,100.00	90.00	0.58	6,980.00	1,312.59	2,219.77	1,269,797.012	3,237,850.855	40.070854	-104.650103
9,200.00	90.00	0.58	6,980.00	1,412.58	2,220.78	1,269,897.012	3,237,850.918	40.071129	-104.650099
9,300.00	90.00	0.58	6,980.00	1,512.58	2,221.79	1,269,997.012	3,237,850.980	40.071403	-104.650095
9,400.00	90.00	0.58	6,980.00	1,612.57	2,222.80	1,270,097.012	3,237,851.043	40.071678	-104.650092
9,500.00	90.00	0.58	6,980.00	1,712.57	2,223.82	1,270,197.012	3,237,851.106	40.071952	-104.650088
9,600.00	90.00	0.58	6,980.00	1,812.56	2,224.83	1,270,297.012	3,237,851.169	40.072227	-104.650084
9,700.00	90.00	0.58	6,980.00	1,912.56	2,225.84	1,270,397.012	3,237,851.232	40.072501	-104.650081
9,800.00	90.00	0.58	6,980.00	2,012.55	2,226.85	1,270,497.012	3,237,851.294	40.072776	-104.650077
9,900.00	90.00	0.58	6,980.00	2,112.55	2,227.86	1,270,597.012	3,237,851.357	40.073050	-104.650073
10,000.00	90.00	0.58	6,980.00	2,212.54	2,228.88	1,270,697.012	3,237,851.420	40.073325	-104.650070

Database:	EDM 5000.15 Single User Db	Local Co-ordinate Reference:	Well WARNER 2L-10H-E165
Company:	Crestone Peak Resources	TVD Reference:	WELL @ 4994.00usft (Original Well Elev)
Project:	Sec 10 T1N-R65W	MD Reference:	WELL @ 4994.00usft (Original Well Elev)
Site:	Warner Pad	North Reference:	True
Well:	WARNER 2L-10H-E165	Survey Calculation Method:	Minimum Curvature
Wellbore:	Wellbore #1		
Design:	Plan #3 27Sep18 kjs		

Planned Survey									
Measured Depth (usft)	Inclination (°)	Azimuth (°)	Vertical Depth (usft)	+N/-S (usft)	+E/-W (usft)	Map Northing (usft)	Map Easting (usft)	Latitude	Longitude
10,100.00	90.00	0.58	6,980.00	2,312.54	2,229.89	1,270,797.012	3,237,851.483	40.073599	-104.650066
10,200.00	90.00	0.58	6,980.00	2,412.53	2,230.90	1,270,897.012	3,237,851.545	40.073874	-104.650062
10,300.00	90.00	0.58	6,980.00	2,512.53	2,231.91	1,270,997.012	3,237,851.608	40.074148	-104.650059
10,400.00	90.00	0.58	6,980.00	2,612.52	2,232.93	1,271,097.012	3,237,851.671	40.074423	-104.650055
10,500.00	90.00	0.58	6,980.00	2,712.52	2,233.94	1,271,197.012	3,237,851.734	40.074697	-104.650052
10,600.00	90.00	0.58	6,980.00	2,812.51	2,234.95	1,271,297.012	3,237,851.797	40.074972	-104.650048
10,700.00	90.00	0.58	6,980.00	2,912.51	2,235.96	1,271,397.012	3,237,851.859	40.075246	-104.650044
10,800.00	90.00	0.58	6,980.00	3,012.50	2,236.97	1,271,497.012	3,237,851.922	40.075521	-104.650041
10,900.00	90.00	0.58	6,980.00	3,112.50	2,237.99	1,271,597.012	3,237,851.985	40.075795	-104.650037
11,000.00	90.00	0.58	6,980.00	3,212.49	2,239.00	1,271,697.012	3,237,852.048	40.076070	-104.650033
11,100.00	90.00	0.58	6,980.00	3,312.49	2,240.01	1,271,797.012	3,237,852.111	40.076344	-104.650030
11,200.00	90.00	0.58	6,980.00	3,412.48	2,241.02	1,271,897.012	3,237,852.173	40.076619	-104.650026
11,300.00	90.00	0.58	6,980.00	3,512.48	2,242.04	1,271,997.012	3,237,852.236	40.076893	-104.650022
11,400.00	90.00	0.58	6,980.00	3,612.47	2,243.05	1,272,097.012	3,237,852.299	40.077168	-104.650019
11,500.00	90.00	0.58	6,980.00	3,712.47	2,244.06	1,272,197.012	3,237,852.362	40.077442	-104.650015
11,600.00	90.00	0.58	6,980.00	3,812.46	2,245.07	1,272,297.012	3,237,852.425	40.077717	-104.650011
11,700.00	90.00	0.58	6,980.00	3,912.46	2,246.09	1,272,397.012	3,237,852.487	40.077991	-104.650008
11,800.00	90.00	0.58	6,980.00	4,012.45	2,247.10	1,272,497.012	3,237,852.550	40.078266	-104.650004
11,900.00	90.00	0.58	6,980.00	4,112.45	2,248.11	1,272,597.012	3,237,852.613	40.078540	-104.650000
12,000.00	90.00	0.58	6,980.00	4,212.44	2,249.12	1,272,697.012	3,237,852.676	40.078815	-104.649997
12,100.00	90.00	0.58	6,980.00	4,312.44	2,250.13	1,272,797.012	3,237,852.739	40.079089	-104.649993
12,200.00	90.00	0.58	6,980.00	4,412.43	2,251.15	1,272,897.012	3,237,852.801	40.079364	-104.649990
12,300.00	90.00	0.58	6,980.00	4,512.43	2,252.16	1,272,997.012	3,237,852.864	40.079638	-104.649986
12,400.00	90.00	0.58	6,980.00	4,612.42	2,253.17	1,273,097.012	3,237,852.927	40.079913	-104.649982
12,500.00	90.00	0.58	6,980.00	4,712.42	2,254.18	1,273,197.012	3,237,852.990	40.080187	-104.649979
12,600.00	90.00	0.58	6,980.00	4,812.41	2,255.20	1,273,297.012	3,237,853.053	40.080462	-104.649975
12,700.00	90.00	0.58	6,980.00	4,912.40	2,256.21	1,273,397.012	3,237,853.115	40.080736	-104.649971
12,800.00	90.00	0.58	6,980.00	5,012.40	2,257.22	1,273,497.012	3,237,853.178	40.081011	-104.649968
12,900.00	90.00	0.58	6,980.00	5,112.39	2,258.23	1,273,597.012	3,237,853.241	40.081285	-104.649964
13,000.00	90.00	0.58	6,980.00	5,212.39	2,259.24	1,273,697.011	3,237,853.304	40.081560	-104.649960
13,100.00	90.00	0.58	6,980.00	5,312.38	2,260.26	1,273,797.012	3,237,853.366	40.081834	-104.649957
13,200.00	90.00	0.58	6,980.00	5,412.38	2,261.27	1,273,897.012	3,237,853.429	40.082109	-104.649953
13,300.00	90.00	0.58	6,980.00	5,512.37	2,262.28	1,273,997.012	3,237,853.492	40.082383	-104.649949
13,400.00	90.00	0.58	6,980.00	5,612.37	2,263.29	1,274,097.012	3,237,853.555	40.082658	-104.649946
13,500.00	90.00	0.58	6,980.00	5,712.36	2,264.31	1,274,197.012	3,237,853.618	40.082932	-104.649942
13,600.00	90.00	0.58	6,980.00	5,812.36	2,265.32	1,274,297.012	3,237,853.680	40.083207	-104.649938
13,700.00	90.00	0.58	6,980.00	5,912.35	2,266.33	1,274,397.012	3,237,853.743	40.083481	-104.649935
13,800.00	90.00	0.58	6,980.00	6,012.35	2,267.34	1,274,497.012	3,237,853.806	40.083756	-104.649931
13,900.00	90.00	0.58	6,980.00	6,112.34	2,268.36	1,274,597.012	3,237,853.869	40.084030	-104.649927
14,000.00	90.00	0.58	6,980.00	6,212.34	2,269.37	1,274,697.012	3,237,853.932	40.084305	-104.649924
14,100.00	90.00	0.58	6,980.00	6,312.33	2,270.38	1,274,797.012	3,237,853.994	40.084579	-104.649920
14,200.00	90.00	0.58	6,980.00	6,412.33	2,271.39	1,274,897.012	3,237,854.057	40.084854	-104.649916
14,300.00	90.00	0.58	6,980.00	6,512.32	2,272.40	1,274,997.012	3,237,854.120	40.085128	-104.649913
14,400.00	90.00	0.58	6,980.00	6,612.32	2,273.42	1,275,097.012	3,237,854.183	40.085403	-104.649909
14,500.00	90.00	0.58	6,980.00	6,712.31	2,274.43	1,275,197.012	3,237,854.246	40.085677	-104.649906
14,600.00	90.00	0.58	6,980.00	6,812.31	2,275.44	1,275,297.012	3,237,854.308	40.085952	-104.649902
14,700.00	90.00	0.58	6,980.00	6,912.30	2,276.45	1,275,397.012	3,237,854.371	40.086226	-104.649898
14,779.75	90.00	0.58	6,980.00	6,992.05	2,277.28	1,275,476.767	3,237,854.440	40.086445	-104.649895
TD at 14779.75 - WARNER 2L-10H-E165 BHL									

Database:	EDM 5000.15 Single User Db	Local Co-ordinate Reference:	Well WARNER 2L-10H-E165
Company:	Crestone Peak Resources	TVD Reference:	WELL @ 4994.00usft (Original Well Elev)
Project:	Sec 10 T1N-R65W	MD Reference:	WELL @ 4994.00usft (Original Well Elev)
Site:	Warner Pad	North Reference:	True
Well:	WARNER 2L-10H-E165	Survey Calculation Method:	Minimum Curvature
Wellbore:	Wellbore #1		
Design:	Plan #3 27Sep18 kjs		

Design Targets									
Target Name	Dip Angle	Dip Dir.	TVD	+N/-S	+E/-W	Northing	Easting	Latitude	Longitude
- hit/miss target	(°)	(°)	(usft)	(usft)	(usft)	(usft)	(usft)		
- Shape									
WARNER 2L-10H-E165	0.00	0.00	6,980.00	6,992.05	2,277.28	1,275,476.767	3,237,854.440	40.086445	-104.649895
- plan hits target center									
- Point									
WARNER 2L-10H-E165	0.00	0.00	6,980.00	7.53	2,206.55	1,268,491.887	3,237,850.035	40.067271	-104.650150
- plan hits target center									
- Point									

Plan Annotations					
Measured Depth	Vertical Depth	Local Coordinates			
(usft)	(usft)	+N/-S	+E/-W	Comment	
(usft)	(usft)	(usft)	(usft)		
200.00	200.00	0.00	0.00	Start Build 2.00	
1,223.78	1,202.12	-61.69	170.15	Hold 20.48 Inc, 109.93 Az	
6,586.68	6,226.21	-701.12	1,933.80	KOP 8/100	
7,794.87	6,980.00	7.53	2,206.55	LP 90 Inc, 0.58 Az	
14,779.75	6,980.00	6,992.05	2,277.28	TD at 14779.75	