

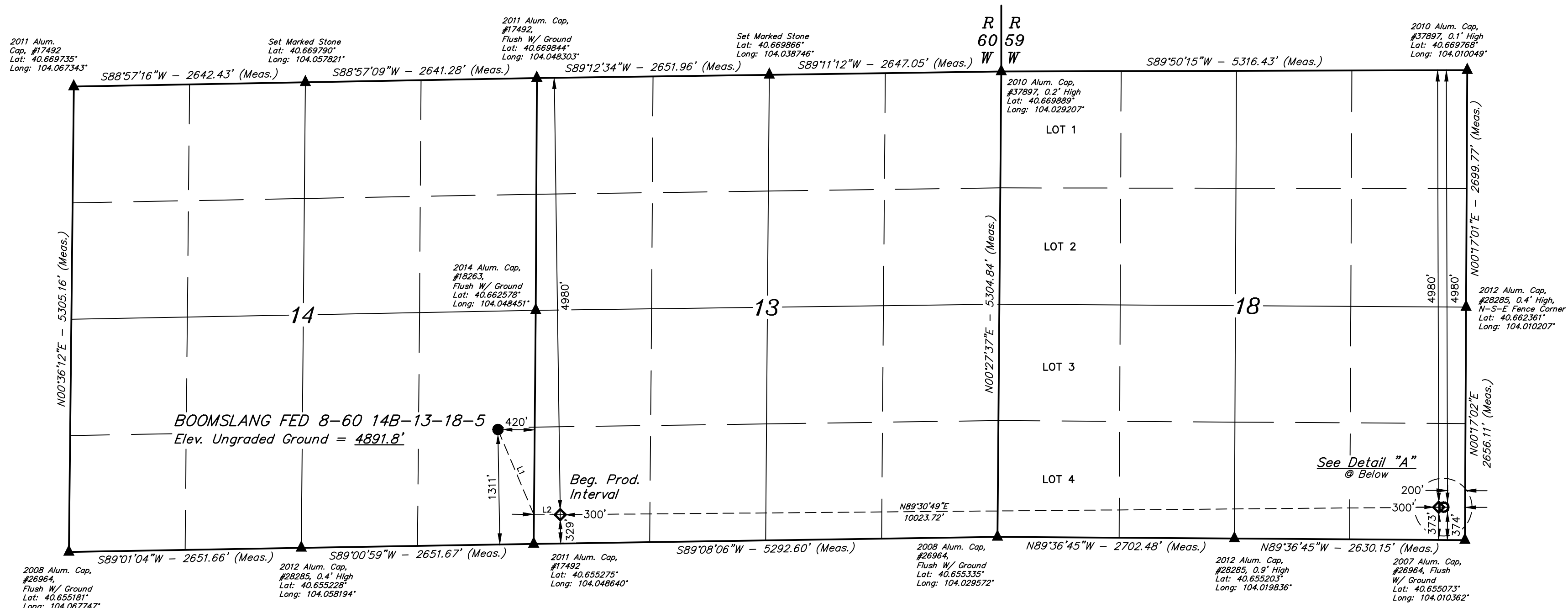
T8N, R60W, 6th P.M.

LEGEND:

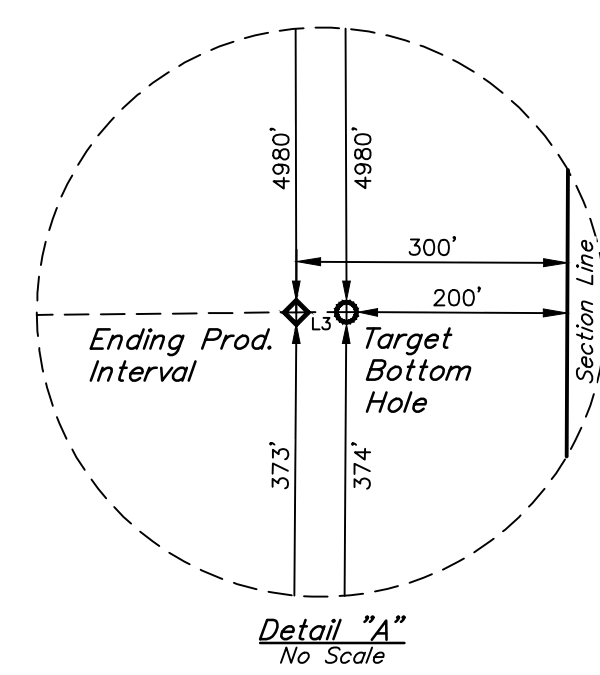
- = PROPOSED WELLHEAD.
- ◇ = PRODUCTION INTERVAL.
- = TARGET BOTTOM HOLE.
- ▲ = SECTION CORNERS LOCATED. (NAD 83)

NOTE:

Distances referenced on plat to section lines are perpendicular.



LINE TABLE		
LINE	DIRECTION	LENGTH
L1	S22°54'43"E	1056.64'
L2	N89°30'49"E	300.05'
L3	N89°50'15"E	100.00'



SURFACE LOCATION	BEG. PROD. INTERVAL	ENDING PROD. INTERVAL	TARGET BOTTOM HOLE
1311' FSL 420' FEL	4980' FSL 329' FSL 300' FWL	4980' FSL 373' FSL 300' FEL	4980' FSL 374' FSL 200' FEL
NAD 83 (SURFACE LOCATION) LATITUDE = 40°39'31.92" (40.658866°) LONGITUDE = 104°03'00.22" (104.050061°)	NAD 83 (BEG. PROD. INTERVAL) LATITUDE = 40°39'22.25" (40.656181°) LONGITUDE = 104°02'51.13" (104.047536°)	NAD 83 (ENDING PROD. INTERVAL) LATITUDE = 40°39'22.00" (40.656111°) LONGITUDE = 104°00'41.11" (104.011421°)	NAD 83 (TARGET BOTTOM HOLE) LATITUDE = 40°39'21.99" (40.656109°) LONGITUDE = 104°00'39.82" (104.011060°)
NAD 27 (SURFACE LOCATION) LATITUDE = 40°39'31.96" (40.658879°) LONGITUDE = 104°02'58.40" (104.049556°)	NAD 27 (BEG. PROD. INTERVAL) LATITUDE = 40°39'22.30" (40.656194°) LONGITUDE = 104°02'49.31" (104.047031°)	NAD 27 (ENDING PROD. INTERVAL) LATITUDE = 40°39'22.05" (40.656124°) LONGITUDE = 104°00'39.30" (104.010916°)	NAD 27 (TARGET BOTTOM HOLE) LATITUDE = 40°39'22.04" (40.656121°) LONGITUDE = 104°00'38.00" (104.010555°)
STATE PLANE NAD 83 (CO. NORTH) N: 1486156.21' E: 3402263.13'	STATE PLANE NAD 83 (CO. NORTH) N: 1485189.76' E: 3402979.67'	STATE PLANE NAD 83 (CO. NORTH) N: 1485330.40' E: 3412999.09'	STATE PLANE NAD 83 (CO. NORTH) N: 1485331.24' E: 3413099.06'
STATE PLANE NAD 27 (CO. NORTH) N: 486154.83' E: 2402413.81'	STATE PLANE NAD 27 (CO. NORTH) N: 485188.39' E: 2403130.39'	STATE PLANE NAD 27 (CO. NORTH) N: 485328.89' E: 2413150.11'	STATE PLANE NAD 27 (CO. NORTH) N: 485329.73' E: 2413250.08'

CERTIFICATE OF RECORD REGISTRATION
 THIS IS TO CERTIFY THAT THE ABOVE SURVEY WAS PREPARED FROM THE NOTES OF ACTUAL SURVEYS MADE BY ME OR UNDER MY SUPERVISION AND THAT THE SAME ARE TRUE AND CORRECT TO THE BEST OF MY KNOWLEDGE AND BELIEF.



REV: 4 07-18-19 CIVIE (SURFACE LOCATION CHANGE)

BASIS OF BEARINGS
 TRANSVERSE MERCATOR PROJECTION WITH
 A CENTRAL MERIDIAN OF W105°00'00".

BASIS OF ELEVATION
 OPUS SOLUTION GENERATED NAVD 88

UELS, LLC
 Corporate Office * 85 South 200 East
 Vernal, UT 84078 * (435) 789-1017

BISON OIL & GAS II

BOOMSLANG FED 8-60 14B-13-18-5
 SE 1/4 SE 1/4, SECTION 14, T8N, R60W, 6th P.M.
 WELD COUNTY, COLORADO

SURVEYED BY	MATTHEW MILLER, J.B.	04-05-19	SCALE
DRAWN BY	J.J.	08-16-17	1" = 1000'

WELL LOCATION PLAT