

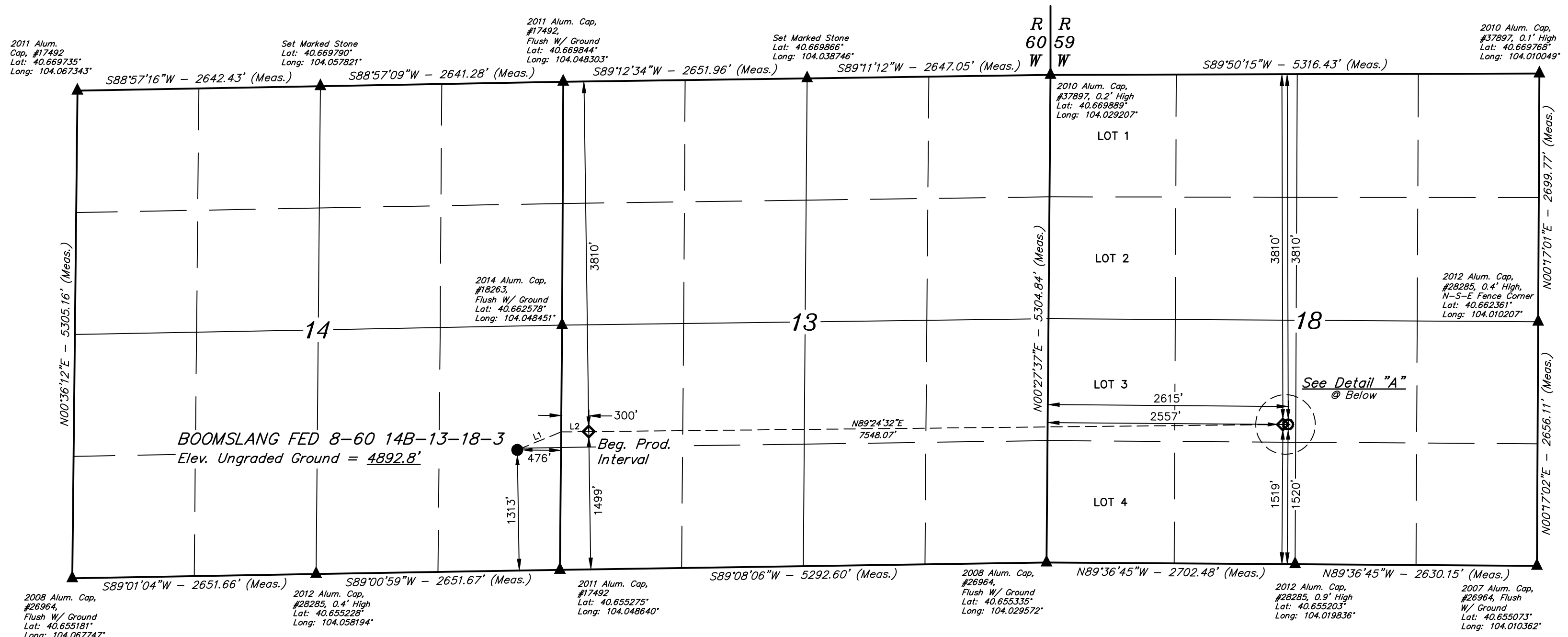
T8N, R60W, 6th P.M.

LEGEND:

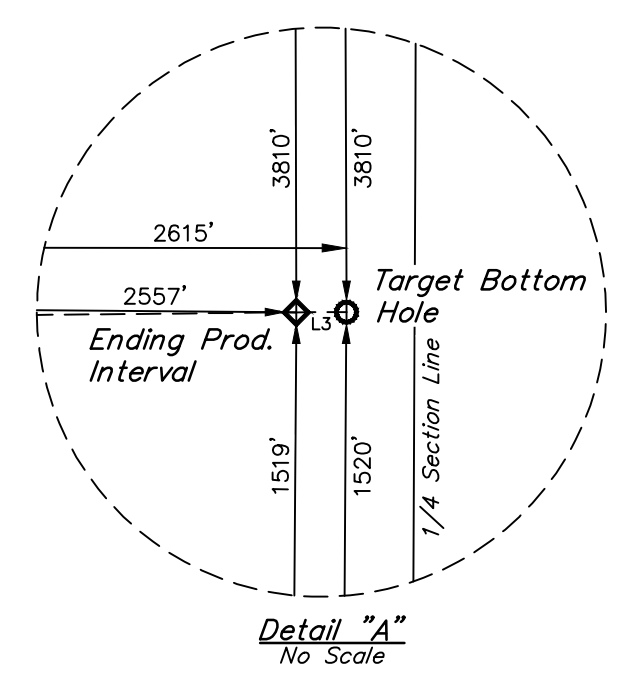
- = PROPOSED WELLHEAD.
- ◇ = PRODUCTION INTERVAL.
- = TARGET BOTTOM HOLE.
- ▲ = SECTION CORNERS LOCATED. (NAD 83)

NOTE:

Distances referenced on plat to section lines are perpendicular.



LINE TABLE		
LINE	DIRECTION	LENGTH
L1	N67°42'24"E	516.44'
L2	N89°24'32"E	300.06'
L3	N89°50'15"E	58.00'



SURFACE LOCATION	BEG. PROD. INTERVAL	ENDING PROD. INTERVAL	TARGET BOTTOM HOLE
1313' FSL 476' FWL	3810' FNL 1499' FSL 300' FWL	3810' FNL 1519' FSL 2557' FWL	3810' FNL 1520' FSL 2615' FWL
<b>NAD 83 (SURFACE LOCATION)</b>	<b>NAD 83 (BEG. PROD. INTERVAL)</b>	<b>NAD 83 (ENDING PROD. INTERVAL)</b>	<b>NAD 83 (TARGET BOTTOM HOLE)</b>
LATITUDE = 40°39'31.93" (40.658869°)	LATITUDE = 40°39'33.81" (40.659392°)	LATITUDE = 40°39'33.76" (40.659378°)	LATITUDE = 40°39'33.76" (40.659377°)
LONGITUDE = 104°03'00.95" (104.050263°)	LONGITUDE = 104°02'50.83" (104.047452°)	LONGITUDE = 104°01'12.92" (104.020255°)	LONGITUDE = 104°01'12.17" (104.020046°)
<b>NAD 27 (SURFACE LOCATION)</b>	<b>NAD 27 (BEG. PROD. INTERVAL)</b>	<b>NAD 27 (ENDING PROD. INTERVAL)</b>	<b>NAD 27 (TARGET BOTTOM HOLE)</b>
LATITUDE = 40°39'31.98" (40.658882°)	LATITUDE = 40°39'33.86" (40.659405°)	LATITUDE = 40°39'33.81" (40.659391°)	LATITUDE = 40°39'33.80" (40.659389°)
LONGITUDE = 104°02'59.13" (104.049758°)	LONGITUDE = 104°02'49.01" (104.046947°)	LONGITUDE = 104°01'11.10" (104.019751°)	LONGITUDE = 104°01'10.35" (104.019542°)
<b>STATE PLANE NAD 83 (CO. NORTH)</b>	<b>STATE PLANE NAD 83 (CO. NORTH)</b>	<b>STATE PLANE NAD 83 (CO. NORTH)</b>	<b>STATE PLANE NAD 83 (CO. NORTH)</b>
N: 1486156.42' E: 3402207.15'	N: 1486359.67' E: 3402983.66'	N: 1486479.35' E: 3410528.29'	N: 1486479.83' E: 3410586.28'
<b>STATE PLANE NAD 27 (CO. NORTH)</b>	<b>STATE PLANE NAD 27 (CO. NORTH)</b>	<b>STATE PLANE NAD 27 (CO. NORTH)</b>	<b>STATE PLANE NAD 27 (CO. NORTH)</b>
N: 486155.05' E: 2402357.83'	N: 486358.29' E: 2403134.36'	N: 486477.85' E: 2410679.22'	N: 486478.34' E: 2410737.21'

CERTIFICATE OF REGISTRATION  
 THIS IS TO CERTIFY THAT THE ABOVE SURVEY WAS PREPARED BY THE SURVEYOR AND THAT THE SAME ARE TRUE AND CORRECT TO THE BEST OF HIS KNOWLEDGE AND BELIEF.  
 REGISTERED LAND SURVEYOR  
 REGISTRATION NO. 28285  
 STATE OF COLORADO  
 04-05-19

**UJTAH**  
 ENGINEERING & LAND SURVEYING  
 UELS, LLC  
 Corporate Office \* 85 South 200 East  
 Vernal, UT 84078 \* (435) 789-1017



REV: 4 07-18-19 CIVIE (SURFACE LOCATION CHANGE)  
**BISON OIL & GAS II**  
**BOOMSLANG FED 8-60 14B-13-18-3**  
**SE 1/4 SE 1/4, SECTION 14, T8N, R60W, 6th P.M.**  
**WELD COUNTY, COLORADO**  
 SURVEYED BY: MATTHEW MILLER, J.B. 04-05-19 SCALE:  
 DRAWN BY: J.J. 08-16-17 1" = 1000'  
**WELL LOCATION PLAT**