

# **HighPoint Resources**

**Weld County, CO (NAD83)**

**Sec 35-T05N-R61W**

**Anschutz Coffelt 5-61-35-1724B**

**Wellbore #1**

**Design: Wellbore #1**

## **Standard Survey Report**

**13 June, 2019**



PROJECT DETAILS: Weld County, CO (NAD83)  
Geodetic System: US State Plane 1983  
Datum: North American Datum 1983  
Ellipsoid: GRS 1980  
Zone: Colorado Northern Zone  
System Datum: Mean Sea Level  
Local North: True

WELL DETAILS: Anschutz Coffelt 5-61-35-1724B

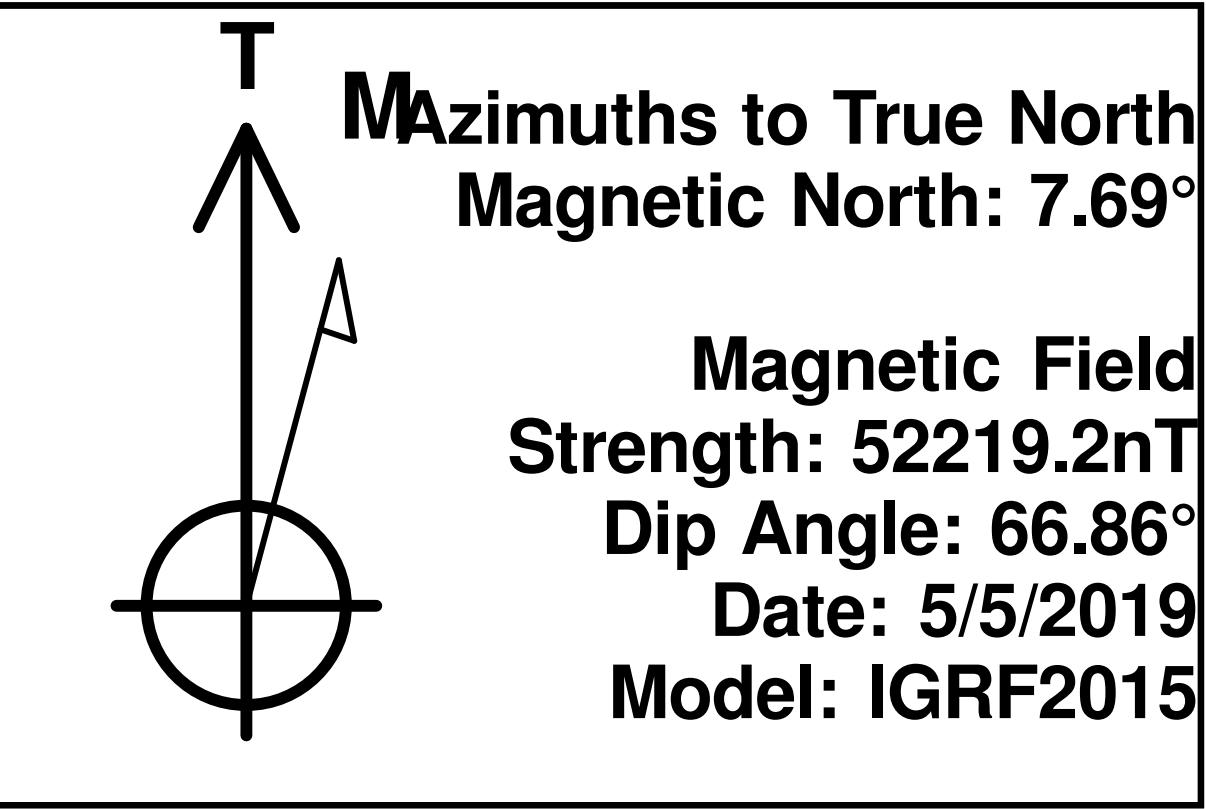
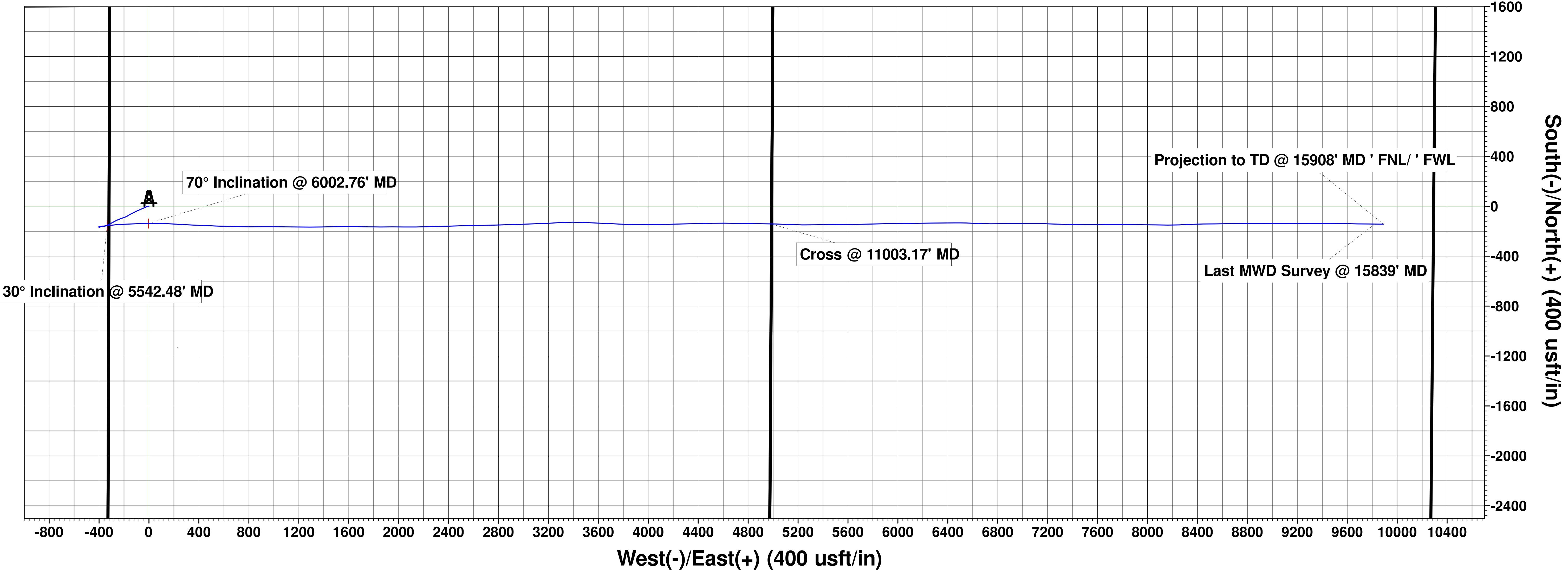
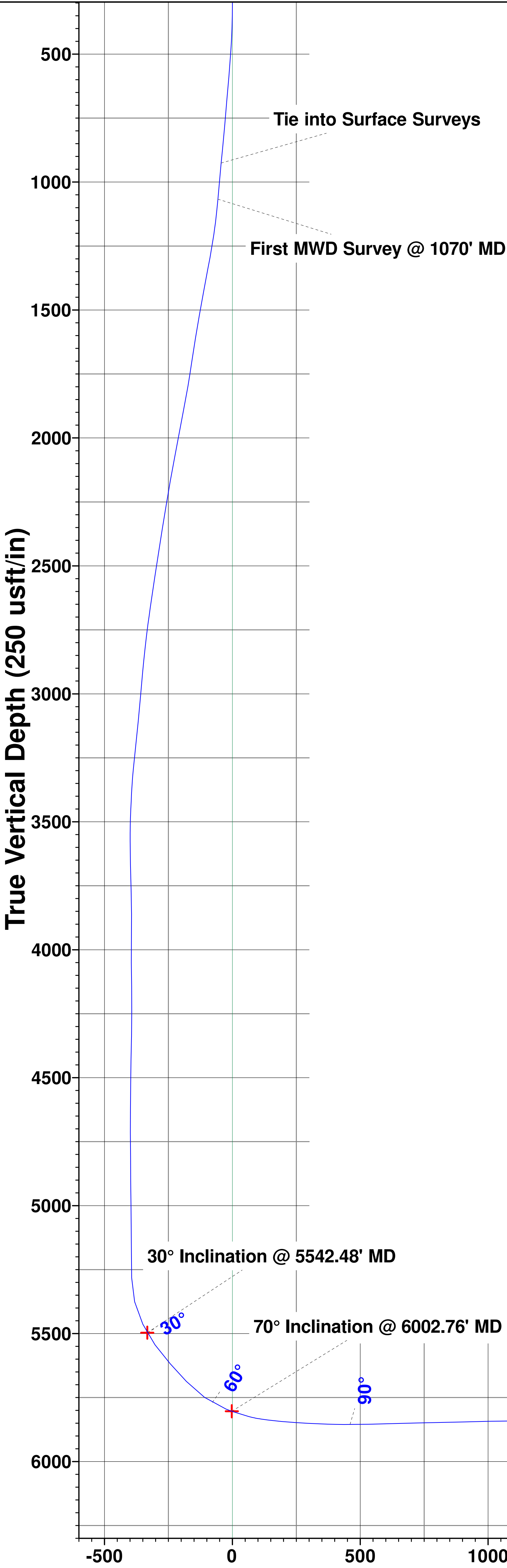
Ground Elevation:: 4491.60  
RKB Elevation: KB @ 4508.10usft (Cade 23)  
Rig Name: Cade 23



Northing	Easting	Latitude	Longitude
1376821.64	3366620.71	40.360311	-104.184359

HighPoint Resources  
Project: Weld County, CO (NAD83)  
Site: Sec 35-T05N-R61W  
Well: Anschutz Coffelt 5-61-35-1724B  
Wellbore: Wellbore #1  
Design: Wellbore #1 (Anschutz Coffelt 5-61-35-1724B/Wellbore #1)  
Cade 23

ANNOTATIONS									
MD	Inc	Azi	TVD	+N/-S	+E/-W	VSect	Departure	Annotation	
928.00	5.50	245.97	925.92	-15.08	-43.98	-43.75	48.91	Tie into Surface Surveys	
1070.00	5.74	247.06	1067.24	-20.61	-56.72	-56.41	62.80	First MWD Survey @ 1070' MD	
5542.48	30.00	82.30	5496.54	-156.41	-335.02	-332.72	527.32	30° Inclination @ 5542.48' MD	
6002.76	70.00	89.32	5803.61	-138.01	-4.08	-2.08	857.77	70° Inclination @ 6002.76' MD	
11003.17	89.87	91.02	5845.14	-141.61	4988.00	4989.53	5851.42	Cross @ 11003.17' MD	
15839.00	90.01	90.49	5840.49	-142.61	9821.59	9822.63	10685.84	Last MWD Survey @ 15839' MD	
15908.00	90.01	90.49	5840.47	-143.20	9890.59	9891.63	10754.84	Projection to TD @ 15908' MD ' FNL/ ' FWL	



Vertical Section at 90.83° (250 usft/in)

## Survey Report

<b>Company:</b>	HighPoint Resources	<b>Local Co-ordinate Reference:</b>	Well Anschutz Coffelt 5-61-35-1724B
<b>Project:</b>	Weld County, CO (NAD83)	<b>TVD Reference:</b>	KB @ 4508.10usft (Cade 23)
<b>Site:</b>	Sec 35-T05N-R61W	<b>MD Reference:</b>	KB @ 4508.10usft (Cade 23)
<b>Well:</b>	Anschutz Coffelt 5-61-35-1724B	<b>North Reference:</b>	True
<b>Wellbore:</b>	Wellbore #1	<b>Survey Calculation Method:</b>	Minimum Curvature
<b>Design:</b>	Wellbore #1	<b>Database:</b>	EDM 5000.15 Single User Db

<b>Project</b>	Weld County, CO (NAD83)		
<b>Map System:</b>	US State Plane 1983	<b>System Datum:</b>	Mean Sea Level
<b>Geo Datum:</b>	North American Datum 1983		
<b>Map Zone:</b>	Colorado Northern Zone		

Site		Sec 35-T05N-R61W			
Site Position:		Northing:	1,378,423.70 usft	Latitude:	40.364722
From:	Lat/Long	Easting:	3,366,282.02 usft	Longitude:	-104.185489
Position Uncertainty:	0.00 usft	Slot Radius:	13-3/16 "	Grid Convergence:	0.85 °

Well	Anschutz Coffelt 5-61-35-1724B					
Well Position	+N/-S	0.00 usft	Northing:	1,376,821.64 usft	Latitude:	40.360311
	+E/-W	0.00 usft	Easting:	3,366,620.70 usft	Longitude:	-104.184359
Position Uncertainty		0.00 usft	Wellhead Elevation:	usft	Ground Level:	4,491.60 usft

<b>Wellbore</b>	Wellbore #1				
<b>Magnetics</b>	<b>Model Name</b>	<b>Sample Date</b>	<b>Declination (°)</b>	<b>Dip Angle (°)</b>	<b>Field Strength (nT)</b>
	IGRF2015	5/5/2019	7.69	66.86	52,219.17034779

<b>Design</b>	Wellbore #1				
<b>Audit Notes:</b>					
<b>Version:</b>	1.0	<b>Phase:</b>	ACTUAL	<b>Tie On Depth:</b>	0.00
<b>Vertical Section:</b>	<b>Depth From (TVD) (usft)</b>	<b>+N/-S (usft)</b>	<b>+E/-W (usft)</b>	<b>Direction (°)</b>	
	0.00	0.00	0.00	90.83	

<b>Survey Program</b>	<b>Date</b>	6/13/2019			
<b>From (usft)</b>	<b>To (usft)</b>	<b>Survey (Wellbore)</b>	<b>Tool Name</b>	<b>Description</b>	
112.50	928.50	Surface Surveys (Wellbore #1)	MWD	MWD - Standard	
1,070.00	15,908.00	Atlas MWD Surveys (Wellbore #1)	MWD	MWD - Standard	

<b>Survey</b>										
<b>Measured Depth (usft)</b>	<b>Inclination (°)</b>	<b>Azimuth (°)</b>	<b>Vertical Depth (usft)</b>	<b>+N/-S (usft)</b>	<b>+E/-W (usft)</b>	<b>Vertical Section (usft)</b>	<b>Dogleg Rate (°/100usft)</b>	<b>Build Rate (°/100usft)</b>	<b>Turn Rate (°/100usft)</b>	
0.00	0.00	0.00	0.00	0.00	0.00	0.00	0.00	0.00	0.00	
112.50	0.13	70.72	112.50	0.04	0.12	0.12	0.12	0.12	0.00	
208.50	0.53	41.45	208.50	0.41	0.52	0.51	0.44	0.42	-30.49	
303.50	0.40	284.91	303.50	0.83	0.49	0.48	0.84	-0.14	-122.67	
398.50	1.80	263.46	398.48	0.74	-1.32	-1.33	1.51	1.47	-22.58	
493.50	4.31	255.64	493.33	-0.31	-6.26	-6.25	2.67	2.64	-8.23	
588.50	5.14	252.21	588.01	-2.50	-13.77	-13.73	0.92	0.87	-3.61	
683.50	5.05	248.71	682.64	-5.32	-21.71	-21.64	0.34	-0.09	-3.68	
779.50	5.54	245.97	778.23	-8.74	-29.88	-29.75	0.57	0.51	-2.85	
874.50	6.42	245.62	872.71	-12.80	-38.91	-38.72	0.93	0.93	-0.37	

## Survey Report

<b>Company:</b>	HighPoint Resources	<b>Local Co-ordinate Reference:</b>	Well Anschutz Coffelt 5-61-35-1724B
<b>Project:</b>	Weld County, CO (NAD83)	<b>TVD Reference:</b>	KB @ 4508.10usft (Cade 23)
<b>Site:</b>	Sec 35-T05N-R61W	<b>MD Reference:</b>	KB @ 4508.10usft (Cade 23)
<b>Well:</b>	Anschutz Coffelt 5-61-35-1724B	<b>North Reference:</b>	True
<b>Wellbore:</b>	Wellbore #1	<b>Survey Calculation Method:</b>	Minimum Curvature
<b>Design:</b>	Wellbore #1	<b>Database:</b>	EDM 5000.15 Single User Db

Survey									
Measured Depth (usft)	Inclination (°)	Azimuth (°)	Vertical Depth (usft)	+N/-S (usft)	+E/-W (usft)	Vertical Section (usft)	Dogleg Rate (°/100usft)	Build Rate (°/100usft)	Turn Rate (°/100usft)
928.00	5.50	245.97	925.92	-15.08	-43.98	-43.75	1.72	-1.72	0.65
Tie into Surface Surveys									
928.50	5.49	245.97	926.42	-15.10	-44.02	-43.80	1.72	-1.72	0.76
1,070.00	5.74	247.06	1,067.24	-20.61	-56.72	-56.41	0.19	0.18	0.77
First MWD Survey @ 1070' MD									
1,162.00	7.64	246.62	1,158.61	-24.83	-66.57	-66.20	2.07	2.07	-0.48
1,254.00	10.65	246.54	1,249.43	-30.64	-79.98	-79.53	3.27	3.27	-0.09
1,346.00	11.98	245.17	1,339.64	-38.04	-96.45	-95.89	1.47	1.45	-1.49
1,438.00	11.45	244.60	1,429.72	-45.97	-113.36	-112.69	0.59	-0.58	-0.62
1,530.00	11.05	244.55	1,519.95	-53.67	-129.57	-128.78	0.43	-0.43	-0.05
1,622.00	10.69	242.00	1,610.30	-61.47	-145.07	-144.16	0.65	-0.39	-2.77
1,717.00	10.03	237.06	1,703.75	-70.10	-159.79	-158.76	1.16	-0.69	-5.20
1,812.00	11.14	239.40	1,797.14	-79.27	-174.63	-173.47	1.25	1.17	2.46
1,906.00	11.84	250.46	1,889.26	-87.12	-191.54	-190.26	2.45	0.74	11.77
2,001.00	11.36	251.65	1,982.32	-93.33	-209.61	-208.23	0.56	-0.51	1.25
2,096.00	11.27	249.05	2,075.48	-99.59	-227.16	-225.69	0.55	-0.09	-2.74
2,190.00	11.05	247.11	2,167.70	-106.38	-244.03	-242.47	0.46	-0.23	-2.06
2,285.00	10.34	244.73	2,261.05	-113.56	-260.13	-258.46	0.88	-0.75	-2.51
2,380.00	10.30	243.67	2,354.51	-120.97	-275.45	-273.67	0.20	-0.04	-1.12
2,475.00	10.12	240.81	2,448.01	-128.80	-290.35	-288.46	0.57	-0.19	-3.01
2,570.00	10.16	239.57	2,541.53	-137.12	-304.86	-302.85	0.23	0.04	-1.31
2,664.00	9.54	241.29	2,634.14	-145.06	-318.84	-316.71	0.73	-0.66	1.83
2,759.00	7.95	253.54	2,728.04	-150.70	-332.05	-329.83	2.57	-1.67	12.89
2,854.00	6.67	252.13	2,822.27	-154.26	-343.60	-341.33	1.36	-1.35	-1.48
2,949.00	5.57	253.32	2,916.72	-157.27	-353.27	-350.96	1.17	-1.16	1.25
3,044.00	5.13	254.78	3,011.31	-159.71	-361.78	-359.43	0.48	-0.46	1.54
3,140.00	5.48	261.12	3,106.90	-161.55	-370.45	-368.08	0.71	0.36	6.60
3,234.00	6.32	261.52	3,200.40	-163.00	-380.01	-377.61	0.89	0.89	0.43
3,328.00	5.52	254.64	3,293.90	-164.96	-389.48	-387.05	1.14	-0.85	-7.32
3,422.00	3.40	252.84	3,387.61	-166.98	-396.51	-394.05	2.26	-2.26	-1.91
3,517.00	2.08	293.11	3,482.51	-167.14	-400.79	-398.32	2.38	-1.39	42.39
3,611.00	0.40	43.74	3,576.49	-166.23	-402.13	-399.68	2.40	-1.79	117.69
3,706.00	1.55	125.44	3,671.47	-166.74	-400.85	-398.40	1.63	1.21	86.00
3,800.00	1.77	103.80	3,765.44	-167.82	-398.41	-395.93	0.70	0.23	-23.02
3,895.00	0.18	9.41	3,860.42	-168.02	-396.96	-394.48	1.89	-1.67	-99.36
3,990.00	0.62	335.60	3,955.42	-167.41	-397.14	-394.68	0.51	0.46	-35.59
4,085.00	0.13	57.40	4,050.42	-166.88	-397.27	-394.81	0.65	-0.52	86.11
4,180.00	1.06	92.61	4,145.41	-166.86	-396.30	-393.84	1.01	0.98	37.06
4,275.00	0.71	330.35	4,240.40	-166.39	-395.71	-393.26	1.64	-0.37	-128.69
4,371.00	1.24	300.52	4,336.39	-165.35	-396.90	-394.46	0.75	0.55	-31.07
4,466.00	1.06	285.80	4,431.37	-164.59	-398.63	-396.21	0.36	-0.19	-15.49
4,560.00	0.93	306.16	4,525.36	-163.90	-400.08	-397.67	0.40	-0.14	21.66
4,654.00	0.27	312.72	4,619.35	-163.30	-400.86	-398.46	0.70	-0.70	6.98

# Survey Report

<b>Company:</b>	HighPoint Resources	<b>Local Co-ordinate Reference:</b>	Well Anschutz Coffelt 5-61-35-1724B
<b>Project:</b>	Weld County, CO (NAD83)	<b>TVD Reference:</b>	KB @ 4508.10usft (Cade 23)
<b>Site:</b>	Sec 35-T05N-R61W	<b>MD Reference:</b>	KB @ 4508.10usft (Cade 23)
<b>Well:</b>	Anschutz Coffelt 5-61-35-1724B	<b>North Reference:</b>	True
<b>Wellbore:</b>	Wellbore #1	<b>Survey Calculation Method:</b>	Minimum Curvature
<b>Design:</b>	Wellbore #1	<b>Database:</b>	EDM 5000.15 Single User Db

Survey									
Measured Depth (usft)	Inclination (°)	Azimuth (°)	Vertical Depth (usft)	+N/-S (usft)	+E/-W (usft)	Vertical Section (usft)	Dogleg Rate (°/100usft)	Build Rate (°/100usft)	Turn Rate (°/100usft)
4,749.00	0.09	320.30	4,714.35	-163.09	-401.07	-398.67	0.19	-0.19	7.98
4,844.00	0.75	125.35	4,809.35	-163.39	-400.61	-398.21	0.88	0.69	173.74
4,939.00	0.62	138.48	4,904.34	-164.14	-399.77	-397.35	0.21	-0.14	13.82
5,034.00	0.66	110.76	4,999.34	-164.72	-398.91	-396.49	0.33	0.04	-29.18
5,128.00	0.66	59.25	5,093.33	-164.63	-397.94	-395.52	0.61	0.00	-54.80
5,222.00	0.84	42.77	5,187.32	-163.85	-397.01	-394.60	0.30	0.19	-17.53
5,316.00	0.57	29.81	5,281.32	-162.94	-396.31	-393.91	0.33	-0.29	-13.79
5,411.00	14.01	87.50	5,375.35	-162.02	-384.53	-382.14	14.44	14.15	60.73
5,505.00	26.16	82.38	5,463.47	-158.76	-352.50	-350.17	13.05	12.93	-5.45
5,542.48	30.00	82.30	5,496.54	-156.41	-335.02	-332.72	10.25	10.24	-0.21
30° Inclination @ 5542.48' MD									
5,599.00	35.79	82.21	5,543.97	-152.28	-304.62	-302.38	10.25	10.24	-0.16
5,694.00	42.25	86.44	5,617.76	-146.52	-245.15	-243.00	7.35	6.80	4.45
5,788.00	42.64	87.76	5,687.12	-143.31	-181.79	-179.70	1.03	0.41	1.40
5,883.00	54.97	87.76	5,749.57	-140.52	-110.50	-108.45	12.98	12.98	0.00
5,978.00	68.10	89.13	5,794.75	-138.33	-27.20	-25.19	13.88	13.82	1.44
6,002.76	70.00	89.32	5,803.61	-138.01	-4.08	-2.08	7.71	7.67	0.76
70° Inclination @ 6002.76' MD									
6,073.00	75.39	89.83	5,824.49	-137.52	62.96	64.94	7.71	7.67	0.73
6,121.00	81.84	92.08	5,833.96	-138.31	109.98	111.97	14.20	13.44	4.69
6,257.00	86.48	93.71	5,847.80	-145.15	245.06	247.13	3.61	3.41	1.20
6,352.00	87.50	92.61	5,852.79	-150.38	339.78	341.92	1.58	1.07	-1.16
6,446.00	89.48	92.08	5,855.26	-154.23	433.66	435.85	2.18	2.11	-0.56
6,541.00	91.52	92.08	5,854.43	-157.67	528.59	530.82	2.15	2.15	0.00
6,635.00	91.69	91.59	5,851.80	-160.68	622.50	624.77	0.55	0.18	-0.52
6,730.00	91.12	91.29	5,849.47	-163.07	717.45	719.73	0.68	-0.60	-0.32
6,825.00	91.30	90.49	5,847.47	-164.54	812.41	814.71	0.86	0.19	-0.84
6,919.00	91.38	89.17	5,845.27	-164.27	906.38	908.67	1.41	0.09	-1.40
7,014.00	91.60	90.49	5,842.80	-163.98	1,001.35	1,003.62	1.41	0.23	1.39
7,110.00	90.19	90.80	5,841.30	-165.06	1,097.33	1,099.60	1.50	-1.47	0.32
7,205.00	89.88	90.18	5,841.24	-165.88	1,192.33	1,194.60	0.73	-0.33	-0.65
7,299.00	90.19	90.67	5,841.18	-166.57	1,286.32	1,288.60	0.62	0.33	0.52
7,395.00	89.70	88.69	5,841.27	-166.04	1,382.32	1,384.57	2.12	-0.51	-2.06
7,491.00	90.50	89.17	5,841.11	-164.24	1,478.30	1,480.52	0.97	0.83	0.50
7,585.00	88.11	89.48	5,842.25	-163.14	1,572.28	1,574.47	2.56	-2.54	0.33
7,679.00	87.01	90.98	5,846.25	-163.51	1,666.19	1,668.38	1.98	-1.17	1.60
7,774.00	87.98	90.89	5,850.40	-165.06	1,761.08	1,763.29	1.03	1.02	-0.09
7,869.00	90.41	89.79	5,851.74	-165.63	1,856.06	1,858.27	2.81	2.56	-1.16
7,964.00	90.19	89.88	5,851.24	-165.35	1,951.06	1,953.25	0.25	-0.23	0.09
8,058.00	89.00	90.67	5,851.90	-165.80	2,045.06	2,047.24	1.52	-1.27	0.84
8,153.00	89.31	89.39	5,853.30	-165.85	2,140.04	2,142.22	1.39	0.33	-1.35
8,247.00	87.32	88.69	5,856.07	-164.28	2,233.98	2,236.13	2.24	-2.12	-0.74
8,342.00	87.80	87.98	5,860.11	-161.52	2,328.86	2,330.95	0.90	0.51	-0.75
8,437.00	89.88	88.29	5,862.04	-158.43	2,423.78	2,425.82	2.21	2.19	0.33



# Survey Report

<b>Company:</b>	HighPoint Resources	<b>Local Co-ordinate Reference:</b>	Well Anschutz Coffelt 5-61-35-1724B
<b>Project:</b>	Weld County, CO (NAD83)	<b>TVD Reference:</b>	KB @ 4508.10usft (Cade 23)
<b>Site:</b>	Sec 35-T05N-R61W	<b>MD Reference:</b>	KB @ 4508.10usft (Cade 23)
<b>Well:</b>	Anschutz Coffelt 5-61-35-1724B	<b>North Reference:</b>	True
<b>Wellbore:</b>	Wellbore #1	<b>Survey Calculation Method:</b>	Minimum Curvature
<b>Design:</b>	Wellbore #1	<b>Database:</b>	EDM 5000.15 Single User Db

Survey										
Measured Depth (usft)	Inclination (°)	Azimuth (°)	Vertical Depth (usft)	+N/-S (usft)	+E/-W (usft)	Vertical Section (usft)	Dogleg Rate (°/100usft)	Build Rate (°/100usft)	Turn Rate (°/100usft)	
8,532.00	91.30	89.17	5,861.06	-156.33	2,518.75	2,520.75	1.76	1.49	0.93	
8,627.00	90.90	88.38	5,859.23	-154.29	2,613.71	2,615.67	0.93	-0.42	-0.83	
8,722.00	91.12	89.08	5,857.56	-152.19	2,708.67	2,710.59	0.77	0.23	0.74	
8,816.00	90.10	88.29	5,856.56	-150.03	2,802.64	2,804.52	1.37	-1.09	-0.84	
8,910.00	89.22	88.60	5,857.12	-147.48	2,896.60	2,898.43	0.99	-0.94	0.33	
9,005.00	90.81	87.67	5,857.09	-144.39	2,991.55	2,993.32	1.94	1.67	-0.98	
9,100.00	89.70	87.98	5,856.67	-140.78	3,086.48	3,088.19	1.21	-1.17	0.33	
9,195.00	90.41	87.67	5,856.58	-137.18	3,181.41	3,183.06	0.82	0.75	-0.33	
9,290.00	91.12	85.78	5,855.31	-131.75	3,276.24	3,277.80	2.13	0.75	-1.99	
9,385.00	92.09	89.30	5,852.65	-127.68	3,371.10	3,372.59	3.84	1.02	3.71	
9,480.00	92.62	92.48	5,848.74	-129.15	3,465.99	3,467.50	3.39	0.56	3.35	
9,574.00	90.72	92.08	5,846.00	-132.89	3,559.87	3,561.43	2.07	-2.02	-0.43	
9,670.00	91.12	93.18	5,844.46	-137.29	3,655.76	3,657.36	1.22	0.42	1.15	
9,766.00	87.80	92.30	5,845.37	-141.88	3,751.63	3,753.29	3.58	-3.46	-0.92	
9,861.00	86.21	92.39	5,850.33	-145.76	3,846.42	3,848.13	1.68	-1.67	0.09	
9,957.00	88.82	89.48	5,854.49	-147.33	3,942.30	3,944.02	4.07	2.72	-3.03	
10,052.00	87.72	89.70	5,857.36	-146.65	4,037.25	4,038.95	1.18	-1.16	0.23	
10,148.00	89.79	88.29	5,859.45	-144.96	4,133.20	4,134.87	2.61	2.16	-1.47	
10,243.00	91.91	88.77	5,858.04	-142.52	4,228.16	4,229.78	2.29	2.23	0.51	
10,338.00	91.91	88.99	5,854.87	-140.67	4,323.09	4,324.67	0.23	0.00	0.23	
10,434.00	92.09	89.08	5,851.52	-139.05	4,419.01	4,420.56	0.21	0.19	0.09	
10,529.00	89.79	87.58	5,849.96	-136.28	4,513.95	4,515.45	2.89	-2.42	-1.58	
10,625.00	90.81	91.20	5,849.46	-135.26	4,609.93	4,611.40	3.92	1.06	3.77	
10,716.00	90.81	90.49	5,848.17	-136.60	4,700.91	4,702.39	0.78	0.00	-0.78	
10,808.00	91.38	91.20	5,846.42	-137.96	4,792.88	4,794.38	0.99	0.62	0.77	
10,900.00	90.28	91.11	5,845.08	-139.82	4,884.85	4,886.36	1.20	-1.20	-0.10	
10,993.00	89.70	90.89	5,845.10	-141.44	4,977.84	4,979.36	0.67	-0.62	-0.24	
11,003.17	89.87	91.02	5,845.14	-141.61	4,988.00	4,989.53	2.09	1.64	1.29	
Cross @ 11003.17' MD										
11,085.00	91.21	92.08	5,844.37	-143.82	5,069.80	5,071.35	2.09	1.64	1.29	
11,177.00	91.91	92.30	5,841.86	-147.34	5,161.70	5,163.29	0.80	0.76	0.24	
11,269.00	90.01	89.70	5,840.32	-148.94	5,253.66	5,255.26	3.50	-2.07	-2.83	
11,361.00	88.91	89.79	5,841.19	-148.53	5,345.65	5,347.24	1.20	-1.20	0.10	
11,453.00	87.80	88.60	5,843.83	-147.24	5,437.60	5,439.16	1.77	-1.21	-1.29	
11,545.00	88.91	89.88	5,846.47	-146.02	5,529.55	5,531.09	1.84	1.21	1.39	
11,637.00	88.29	89.39	5,848.72	-145.43	5,621.52	5,623.04	0.86	-0.67	-0.53	
11,729.00	89.31	89.08	5,850.65	-144.21	5,713.49	5,714.98	1.16	1.11	-0.34	
11,821.00	88.11	88.51	5,852.72	-142.27	5,805.45	5,806.90	1.44	-1.30	-0.62	
11,913.00	89.88	88.99	5,854.33	-140.27	5,897.41	5,898.82	1.99	1.92	0.52	
12,005.00	88.60	89.61	5,855.55	-139.14	5,989.39	5,990.78	1.55	-1.39	0.67	
12,097.00	92.18	88.51	5,854.92	-137.63	6,081.36	6,082.71	4.07	3.89	-1.20	
12,189.00	91.12	89.39	5,852.28	-135.95	6,173.30	6,174.62	1.50	-1.15	0.96	
12,284.00	89.88	88.99	5,851.45	-134.61	6,268.29	6,269.58	1.37	-1.31	-0.42	

# Survey Report

<b>Company:</b>	HighPoint Resources	<b>Local Co-ordinate Reference:</b>	Well Anschutz Coffelt 5-61-35-1724B
<b>Project:</b>	Weld County, CO (NAD83)	<b>TVD Reference:</b>	KB @ 4508.10usft (Cade 23)
<b>Site:</b>	Sec 35-T05N-R61W	<b>MD Reference:</b>	KB @ 4508.10usft (Cade 23)
<b>Well:</b>	Anschutz Coffelt 5-61-35-1724B	<b>North Reference:</b>	True
<b>Wellbore:</b>	Wellbore #1	<b>Survey Calculation Method:</b>	Minimum Curvature
<b>Design:</b>	Wellbore #1	<b>Database:</b>	EDM 5000.15 Single User Db

Survey										
Measured Depth (usft)	Inclination (°)	Azimuth (°)	Vertical Depth (usft)	+N/-S (usft)	+E/-W (usft)	Vertical Section (usft)	Dogleg Rate (°/100usft)	Build Rate (°/100usft)	Turn Rate (°/100usft)	
12,377.00	90.99	90.10	5,850.74	-133.87	6,361.28	6,362.55	1.69	1.19	1.19	
12,472.00	90.99	89.48	5,849.10	-133.52	6,456.26	6,457.52	0.65	0.00	-0.65	
12,566.00	90.59	91.29	5,847.80	-134.15	6,550.25	6,551.50	1.97	-0.43	1.93	
12,661.00	90.59	93.18	5,846.82	-137.86	6,645.17	6,646.47	1.99	0.00	1.99	
12,756.00	89.70	90.01	5,846.58	-140.50	6,740.12	6,741.44	3.47	-0.94	-3.34	
12,851.00	89.09	89.48	5,847.59	-140.08	6,835.11	6,836.42	0.85	-0.64	-0.56	
12,945.00	89.48	89.88	5,848.76	-139.55	6,929.10	6,930.39	0.59	0.41	0.43	
13,039.00	88.20	90.40	5,850.66	-139.78	7,023.08	7,024.37	1.47	-1.36	0.55	
13,134.00	90.59	89.79	5,851.67	-139.94	7,118.07	7,119.35	2.60	2.52	-0.64	
13,229.00	91.78	91.51	5,849.70	-141.02	7,213.03	7,214.32	2.20	1.25	1.81	
13,323.00	91.78	92.21	5,846.78	-144.06	7,306.94	7,308.26	0.74	0.00	0.74	
13,418.00	92.40	90.67	5,843.32	-146.45	7,401.84	7,403.19	1.75	0.65	-1.62	
13,513.00	91.60	91.20	5,840.00	-148.00	7,496.77	7,498.13	1.01	-0.84	0.56	
13,607.00	87.98	88.77	5,840.35	-147.98	7,590.75	7,592.09	4.64	-3.85	-2.59	
13,703.00	87.01	88.91	5,844.54	-146.03	7,686.63	7,687.94	1.02	-1.01	0.15	
13,798.00	87.50	90.80	5,849.09	-145.79	7,781.52	7,782.82	2.05	0.52	1.99	
13,894.00	86.48	91.20	5,854.13	-147.47	7,877.37	7,878.68	1.14	-1.06	0.42	
13,989.00	88.38	90.27	5,858.39	-148.68	7,972.26	7,973.58	2.23	2.00	-0.98	
14,084.00	89.88	90.58	5,859.83	-149.39	8,067.25	8,068.56	1.61	1.58	0.33	
14,179.00	90.99	91.11	5,859.11	-150.79	8,162.23	8,163.56	1.29	1.17	0.56	
14,274.00	90.90	87.19	5,857.55	-149.38	8,257.19	8,258.49	4.13	-0.09	-4.13	
14,368.00	92.71	86.88	5,854.59	-144.52	8,351.01	8,352.23	1.95	1.93	-0.33	
14,463.00	92.09	90.18	5,850.61	-142.09	8,445.89	8,447.06	3.53	-0.65	3.47	
14,558.00	92.71	88.99	5,846.63	-141.40	8,540.80	8,541.95	1.41	0.65	-1.25	
14,653.00	90.99	89.70	5,843.56	-140.31	8,635.74	8,636.86	1.96	-1.81	0.75	
14,748.00	91.30	88.77	5,841.66	-139.05	8,730.71	8,731.81	1.03	0.33	-0.98	
14,843.00	90.41	89.48	5,840.24	-137.60	8,825.69	8,826.75	1.20	-0.94	0.75	
14,938.00	89.79	90.18	5,840.08	-137.31	8,920.68	8,921.74	0.98	-0.65	0.74	
15,033.00	89.88	90.49	5,840.35	-137.87	9,015.68	9,016.73	0.34	0.09	0.33	
15,128.00	89.62	89.79	5,840.77	-138.10	9,110.68	9,111.72	0.79	-0.27	-0.74	
15,223.00	88.91	89.48	5,841.99	-137.50	9,205.67	9,206.70	0.82	-0.75	-0.33	
15,318.00	91.12	90.89	5,841.96	-137.80	9,300.66	9,301.68	2.76	2.33	1.48	
15,412.00	91.38	89.70	5,839.91	-138.29	9,394.64	9,395.65	1.30	0.28	-1.27	
15,508.00	89.48	90.58	5,839.19	-138.52	9,490.63	9,491.64	2.18	-1.98	0.92	
15,602.00	89.70	90.49	5,839.86	-139.40	9,584.62	9,585.63	0.25	0.23	-0.10	
15,698.00	89.70	91.20	5,840.37	-140.82	9,680.61	9,681.63	0.74	0.00	0.74	
15,793.00	90.10	90.49	5,840.53	-142.22	9,775.60	9,776.63	0.86	0.42	-0.75	
15,839.00	90.01	90.49	5,840.49	-142.61	9,821.59	9,822.63	0.20	-0.20	0.00	
Last MWD Survey @ 15839' MD										
15,908.00	90.01	90.49	5,840.47	-143.20	9,890.59	9,891.63	0.00	0.00	0.00	
Projection to TD @ 15908' MD ' FNL/ ' FWL										

## Survey Report

<b>Company:</b>	HighPoint Resources	<b>Local Co-ordinate Reference:</b>	Well Anschutz Coffelt 5-61-35-1724B
<b>Project:</b>	Weld County, CO (NAD83)	<b>TVD Reference:</b>	KB @ 4508.10usft (Cade 23)
<b>Site:</b>	Sec 35-T05N-R61W	<b>MD Reference:</b>	KB @ 4508.10usft (Cade 23)
<b>Well:</b>	Anschutz Coffelt 5-61-35-1724B	<b>North Reference:</b>	True
<b>Wellbore:</b>	Wellbore #1	<b>Survey Calculation Method:</b>	Minimum Curvature
<b>Design:</b>	Wellbore #1	<b>Database:</b>	EDM 5000.15 Single User Db

Design Targets									
Target Name - hit/miss target - Shape	Dip Angle (°)	Dip Dir. (°)	TVD (usft)	+N/-S (usft)	+E/-W (usft)	Northing (usft)	Easting (usft)	Latitude	Longitude
30° Inclination @ 5542.4 - actual wellpath hits target center - Point	0.00	0.00	5,496.54	-156.41	-335.02	1,376,660.27	3,366,288.04	40.359882	-104.185561
70° Inclination @ 6002.7 - actual wellpath hits target center - Point	0.00	0.00	5,803.61	-138.01	-4.08	1,376,683.58	3,366,618.67	40.359932	-104.184374
Cross @ 11003.17' MD - actual wellpath hits target center - Point	0.00	0.00	5,845.14	-141.61	4,988.00	1,376,754.05	3,371,610.26	40.359921	-104.166460

Design Annotations					
Measured Depth (usft)	Vertical Depth (usft)	Local Coordinates			
		+N/-S (usft)	+E/-W (usft)	Comment	
928.00	925.92	-15.08	-43.98	Tie into Surface Surveys	
1,070.00	1,067.24	-20.61	-56.72	First MWD Survey @ 1070' MD	
5,542.48	5,496.54	-156.41	-335.02	30° Inclination @ 5542.48' MD	
6,002.76	5,803.61	-138.01	-4.08	70° Inclination @ 6002.76' MD	
11,003.17	5,845.14	-141.61	4,988.00	Cross @ 11003.17' MD	
15,839.00	5,840.49	-142.61	9,821.59	Last MWD Survey @ 15839' MD	
15,908.00	5,840.47	-143.20	9,890.59	Projection to TD @ 15908' MD ' FNL/ ' FWL	

Checked By: _____	Approved By: _____	Date: _____
-------------------	--------------------	-------------