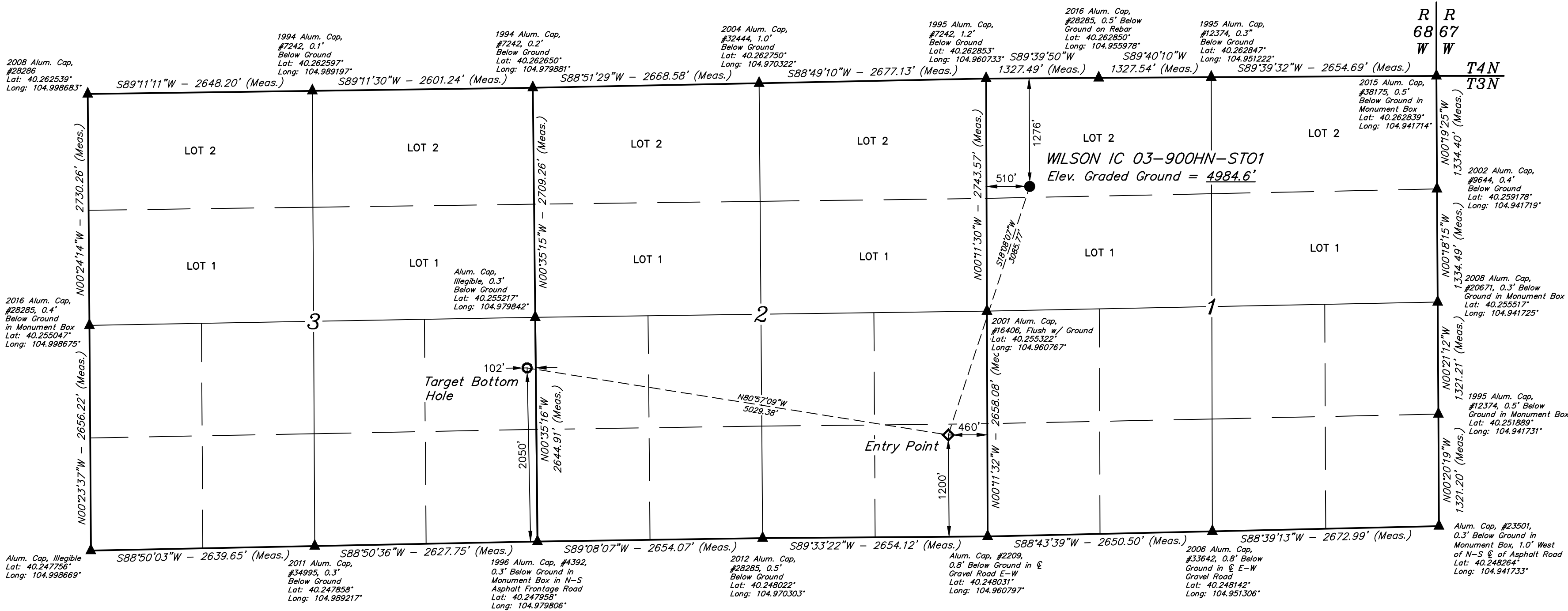
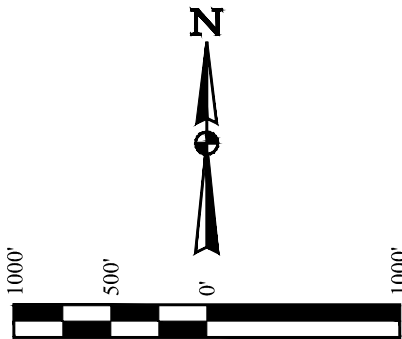


T3N, R68W, 6th P.M.

GREAT WESTERN OPERATING COMPANY

WILSON IC 03-900HN-ST01  
NW 1/4 NW 1/4, SECTION 1, T3N, R68W, 6th P.M.  
WELD COUNTY, COLORADO

BASIS OF BEARINGS  
BASIS OF ELEVATION  
USGS COOPERATIVE BASE NETWORK CONTROL STATION,  
DESIGNATION 'VERMILYEA'. NGS DATA SHEET LISTS THE NAVD  
88 ELEVATION AS BEING 5026 FEET.



NOTE:  
Distances referenced  
on plat to section lines  
are perpendicular.

LEGEND:

- = PROPOSED WELLHEAD.
- ◇ = ENTRY POINT.
- = TARGET BOTTOM HOLE.
- ▲ = SECTION CORNERS LOCATED. (NAD 83)

CERTIFICATE OF RECORD  
THIS IS TO CERTIFY THAT THE ABOVE PLAT WAS PREPARED FROM FIELD  
NOTES OF ACTUAL SURVEYS MADE BY ME OR UNDER MY SUPERVISION  
AND THAT THE SAME ARE TRUE AND CORRECT TO THE BEST OF MY  
KNOWLEDGE AND BELIEF.

REGISTERED LAND SURVEYOR  
RECEIVED AND NO. 28285  
STATE OF COLORADO  
JONATHAN BAYLIFF

REV: 1 06-24-19 C.IVIE (TARGET BOTTOM HOLE CORRECTION)

PDOP = 1.4

NAD 83 (SURFACE LOCATION)	NAD 83 (ENTRY POINT)	NAD 83 (TARGET BOTTOM HOLE)
LATITUDE = 40°15'33.66" (40.259351)	LATITUDE = 40°15'04.76" (40.251321)	LATITUDE = 40°15'12.89" (40.253580)
LONGITUDE = 104°57'32.11" (104.958920)	LONGITUDE = 104°57'44.75" (104.962430)	LONGITUDE = 104°58'48.72" (104.980200)
NAD 27 (SURFACE LOCATION)	NAD 27 (ENTRY POINT)	NAD 27 (TARGET BOTTOM HOLE)
LATITUDE = 40°15'33.72" (40.259367)	LATITUDE = 40°15'04.81" (40.251337)	LATITUDE = 40°15'12.95" (40.253596)
LONGITUDE = 104°57'30.20" (104.958389)	LONGITUDE = 104°57'42.83" (104.961897)	LONGITUDE = 104°58'46.80" (104.979667)



UELS, LLC  
Corporate Office \* 85 South 200 East  
Vernal, UT 84078 \* (435) 789-1017

SURVEYED BY JONATHAN BAYLIFF  
DRAWN BY C.IVIE  
SCALE 06-03-19 06-14-19  
1" = 1000'

WELL LOCATION PLAT