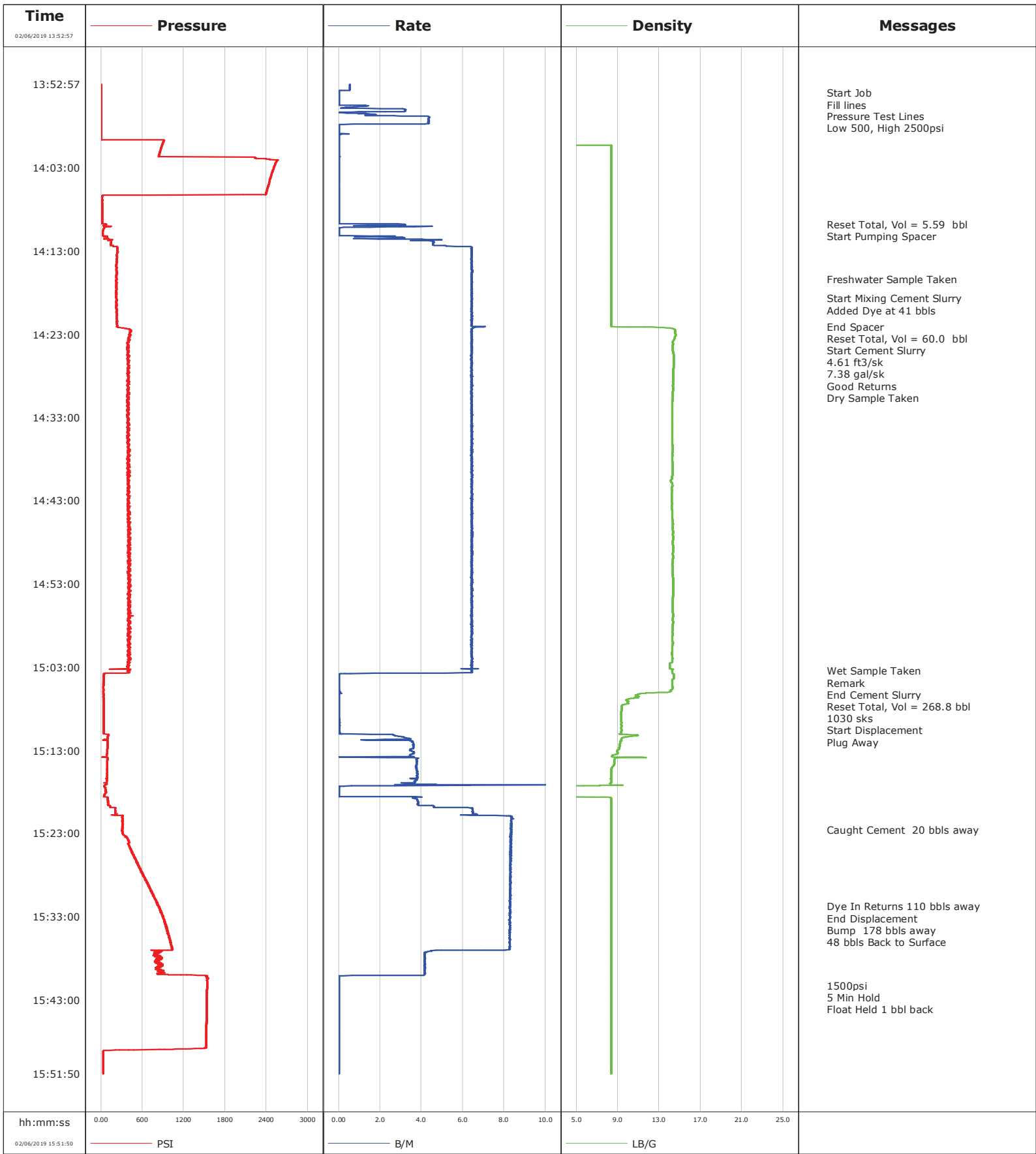


<b>Well</b>	BigHorn 4R-17H-P267	<b>Client</b>	Crestone Peak Resources
<b>Field</b>	Wildcat	<b>SIR No.</b>	2896029
<b>Engineer</b>	Micheal Navoy	<b>Job Type</b>	Surface
<b>Country</b>	United States	<b>Job Date</b>	02-06-2019



				Customer			Job Number			
				Crestone Peak Resources			2896029			
Well		Location (legal)			Schlumberger Location			Job Start		
BigHorn 4R-17H-P267		Wattenberg						Feb/06/2019		
Field		Formation Name/Type		Deviation	Bit Size		Well MD	Well TVD		
Wildcat				0 deg	13.5 in		2409.0 ft	2372.9 ft		
County		State/Province		BHP	BHST	BHCT	Pore Press. Gradient			
Wedl		Colorado		psi	110 degF	80 degF	lb/gal			
Well Master		API/UWI								
631799788										
Rig Name	Drilled For		Service Via	Casing/Liner						
Ensign 153	Oil		Land	Depth, ft		Size, in	Weight, lb/ft	Grade	Thread	
				126.0		16.0	55.0	F-25		
Offshore Zone	Well Class		Well Type	2394.0		9.6	40.0	J-55		
			Development							
Drilling Fluid Type		Max. Density	Plastic Viscosity		Tubing/Drill Pipe					
Spud Mud		8.50 lb/gal	27.000 cP		T/D	Depth, ft	Size, in	Weight, lb/ft	Grade	Thread
Service Line	Job Type			Perforations/Open Hole						
Cementing	Surface			Top, ft	Bottom, ft	shot/ft	No. of Shots	Total Interval		
				ft	ft			ft		
Max. Allowed Tub. Press	Max. Allowed Ann. Press		WH Connection	ft	ft			Diameter		
psi	psi		9 5/8 Single Head	ft	ft			in		
				Treat Down	Displacement		Packer Type	Packer Depth		
				Casing	178.0 bbl			ft		
				Tubing Vol.	Casing Vol.		Annular Vol.	Openhole Vol.		
				bbl	181.5 bbl		214.9 bbl	197.3 bbl		
Casing/Tubing Secured		1 Hole Vol. Circulated prior to Cement			Casing Tools			Squeeze Job		
<input type="checkbox"/>		<input type="checkbox"/>								
Lift Pressure		Shoe Type			Shoe Depth		Squeeze Type			
psi		Float			2394.0 ft					
Pipe Rotated		Pipe Reciprocated			Stage Tool Type			Tool Depth		
<input type="checkbox"/>		<input type="checkbox"/>						ft		
No. Centralizers		Top Plugs	Bottom Plugs	Stage Tool Depth			Tail Pipe Size			
		1		ft			in			
Cement Head Type				Collar Type			Tail Pipe Depth			
Single				Float			ft			
Job Scheduled For		Arrived on Location		Leave Location	Collar Depth		Sqz. Total Vol.			
Feb/06/2019 13:58		Feb/06/2019 15:51		Feb/06/2019	2349.0 ft		bbl			
Date	Time 24-hr clock	Treating Pressure PSI	Flow Rate B/M	Density LB/G	Volume BBL	Message				
02/06/2019	13:52:57	0	0.5	0.00	0.0	Started Acquisition				
02/06/2019	13:53:58	0	0.0	0.00	0.0	Start Job				
02/06/2019	13:54:09	0	0.0	0.00	0.0	Fill lines				
02/06/2019	13:56:08	0	3.2	0.00	0.1	Pressure Test Lines				
02/06/2019	13:56:14	0	2.9	0.00	0.5	Low 500, High 2500psi				
02/06/2019	14:09:46	76	3.2	8.36	5.5	Reset Total, Vol = 5.59 bbl				
02/06/2019	14:09:50	79	3.2	8.36	5.7	Start Pumping Spacer				
02/06/2019	14:16:24	223	6.4	8.36	36.9	Freshwater Sample Taken				
02/06/2019	14:18:44	223	6.4	8.36	51.9	Start Mixing Cement Slurry				
02/06/2019	14:19:45	222	6.4	8.36	58.5	Added Dye at 41 bbls				
02/06/2019	14:22:08	242	6.6	12.38	73.8	End Spacer				
02/06/2019	14:22:17	364	6.5	14.30	74.8	Start Cement Slurry				
02/06/2019	14:25:11	387	6.5	14.36	93.4	4.61 ft3/sk				
02/06/2019	14:25:12	397	6.4	14.36	93.6	7.38 gal/sk				
02/06/2019	14:28:04	413	6.4	14.36	112.0	Good Returns				
02/06/2019	14:28:19	407	6.5	14.34	113.6	Dry Sample Taken				
02/06/2019	15:03:28	385	6.4	14.26	339.8	Wet Sample Taken				
02/06/2019	15:03:45	42	0.3	14.36	341.3	Remark				
02/06/2019	15:03:59	40	0.0	14.40	341.3	End Cement Slurry				
02/06/2019	15:04:03	39	0.0	14.40	341.3	Reset Total, Vol = 268.8 bbl				
02/06/2019	15:04:56	36	0.0	14.25	341.3	1030 sks				

<b>Well</b> BigHorn 4R-17H-P267		<b>Field</b> Wildcat		<b>Job Start</b> Feb/06/2019	<b>Customer</b> Crestone Peak Resources		<b>Job Number</b> 2896029
<b>Date</b>	<b>Time 24-hr clock</b>	<b>Treating Pressure PSI</b>	<b>Flow Rate B/M</b>	<b>Density LB/G</b>	<b>Volume BBL</b>	<b>Message</b>	
02/06/2019	15:09:11	37	0.0	9.34	341.4	Plug Away	
02/06/2019	15:31:44	837	8.3	8.36	465.7	Dye In Returns 110 bbls away	
02/06/2019	15:31:45	840	8.3	8.36	465.8	Bump 178 bbls away	
02/06/2019	15:31:56	845	8.2	8.36	467.4	48 bbls Back to Surface	
02/06/2019	15:41:13	1538	0.0	8.36	521.9	1500psi	

### Post Job Summary

<b>Average Pump Rates, bbl/min</b>					<b>Volume of Fluid Injected, bbl</b>			
<b>Slurry</b> 5.8	<b>N2</b>	<b>Mud</b>	<b>Maximum Rate</b> 11.7		<b>Total Slurry</b> 521.9	<b>Mud</b> 0.0	<b>Spacer</b> 73.8	<b>N2</b>
<b>Treating Pressure Summary, psi</b>					<b>Breakdown Fluid</b>			
<b>Maximum</b> 2570	<b>Final</b> 32	<b>Average</b> 539	<b>Bump Plug to</b> 1500	<b>Breakdown</b>	<b>Type</b>	<b>Volume</b> 178.0 bbl		<b>Density</b> 8.34 lb/gal
<b>Avg. N2 Percent</b> %	<b>Designed Slurry Volume</b> 0.0 bbl		<b>Displacement</b> 178.0 bbl	<b>Mix Water Temp</b> degF	<b>Cement Circulated to Surface?</b> <input type="checkbox"/>	<b>Volume</b> bbl		
					<b>Washed Thru Perfs</b> <input type="checkbox"/>	<b>To</b> ft		
<b>Customer or Authorized Representative</b> Mr. Company Man			<b>Schlumberger Supervisor</b> Micheal Navoy		<b>Circulation Lost</b> <input type="checkbox"/>	<b>Job Completed</b> <input type="checkbox"/>		
					-	-		