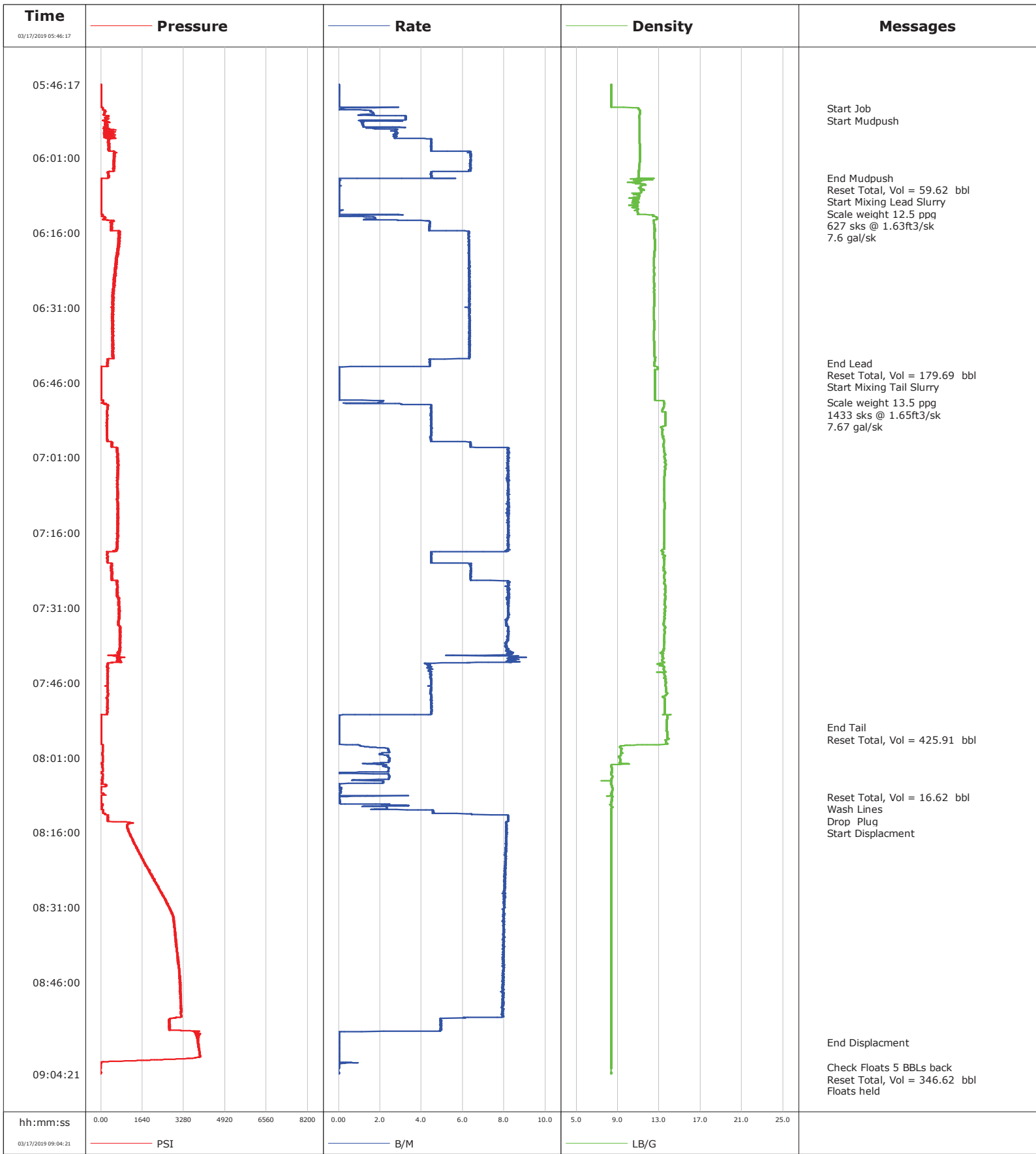


Well	BIGHORN 4R 17H P26	Client	Crestone Peak
Field	WATTENBERG	SIR No.	2943831
Engineer	NORM HASLAUER	Job Type	PRODUCTION
Country	United States	Job Date	03-17-2019



				Customer			Job Number		
				Crestone Peak			2943831		
Well		Location (legal)		Schlumberger Location			Job Start		
BIGHORN 4R 17H P26 DZ6B-00674							Mar/17/2019		
Field		Formation Name/Type		Deviation	Bit Size	Well MD	Well TVD		
WATTENBERG		Clean-Sandstone		deg	in	15322.0 ft	7280.0 ft		
County		State/Province		BHP	BHST	BHCT	Pore Press. Gradient		
Weld		Colorado		psi	233 degF	218 degF	lb/gal		
Well Master		API/UWI							
0631799788									
Rig Name	Drilled For	Service Via	Casing/Liner						
ENSIGN 153	Oil & Gas	Land	Depth, ft		Size, in	Weight, lb/ft	Grade	Thread	
			1394.0		9.6	40.0			
Offshore Zone	Well Class	Well Type	15322.0		5.5	17.0			
	New	Development							
Drilling Fluid Type		Max. Density	Plastic Viscosity	Tubing/Drill Pipe					
		lb/gal	cP	T/D	Depth, ft	Size, in	Weight, lb/ft	Grade	Thread
Service Line	Job Type								
Cementing	PRODUCTION								
Max. Allowed Tub. Press	Max. Allowed Ann. Press	WH Connection	Perforations/Open Hole						
psi	psi	Double Cement head	Top, ft	Bottom, ft	shot/ft	No. of Shots	Total Interval		
			ft	ft			ft		
			ft	ft			Diameter		
			ft	ft			in		
			Treat Down	Displacement		Packer Type	Packer Depth		
			Casing	340.0 bbl			ft		
			Tubing Vol.	Casing Vol.		Annular Vol.	Openhole Vol.		
			bbl	342.0 bbl		bbl	bbl		
Casing/Tubing Secured		1 Hole Vol. Circulated prior to Cement		Casing Tools			Squeeze Job		
<input checked="" type="checkbox"/>		<input checked="" type="checkbox"/>							
Lift Pressure		2780 psi		Shoe Type		Float		Squeeze Type	
Pipe Rotated		Pipe Reciprocated		Shoe Depth		15322.0 ft		Tool Type	
<input type="checkbox"/>		<input type="checkbox"/>							
No. Centralizers		Top Plugs	Bottom Plugs	Stage Tool Type			Tool Depth		
		1					ft		
Cement Head Type				Stage Tool Depth			Tail Pipe Size		
				ft			in		
Job Scheduled For		Arrived on Location		Leave Location		Collar Type		Tail Pipe Depth	
Mar/17/2019		Mar/17/2019		Mar/17/2019		Float		ft	
						Collar Depth		Sqz. Total Vol.	
						15310.0 ft		bbl	
Date	Time 24-hr clock	Treating Pressure PSI	Flow Rate B/M	Density LB/G	Volume BBL	Message			
03/17/2019	05:46:17	0	0.0	8.36	0.0	Started Acquisition			
03/17/2019	05:51:05	72	0.2	10.99	0.2	Start Job			
03/17/2019	05:51:08	70	0.1	11.01	0.2	Start Mudpush			
03/17/2019	06:05:00	296	4.5	11.02	55.5	End Mudpush			
03/17/2019	06:05:08	32	0.9	10.84	56.0	Reset Total, Vol = 59.62 bbl			
03/17/2019	06:05:11	18	0.0	10.34	0.0	Start Mixing Lead Slurry			
03/17/2019	06:05:13	14	0.0	11.40	0.0	Scale weight 12.5 ppg			
03/17/2019	06:06:00	3	0.0	10.43	0.0	627 sks @ 1.63ft3/sk			
03/17/2019	06:07:00	3	0.0	11.11	0.0	7.6 gal/sk			
03/17/2019	06:42:06	236	4.4	12.52	176.6	End Lead			
03/17/2019	06:42:57	-16	0.0	12.84	179.7	Reset Total, Vol = 179.69 bbl			
03/17/2019	06:46:00	-6	0.0	12.59	0.0	Start Mixing Tail Slurry			
03/17/2019	06:50:00	68	1.9	13.44	0.9	Scale weight 13.5 ppg			
03/17/2019	06:51:00	261	4.5	13.41	4.5	1433 sks @ 1.65ft3/sk			
03/17/2019	06:52:00	226	4.5	13.60	9.0	7.67 gal/sk			
03/17/2019	07:55:00	11	0.0	13.75	425.9	End Tail			
03/17/2019	07:55:35	10	0.0	13.73	425.9	Reset Total, Vol = 425.91 bbl			
03/17/2019	08:08:57	3	0.0	8.45	16.6	Reset Total, Vol = 16.62 bbl			
03/17/2019	08:09:01	3	0.0	8.44	0.0	Wash Lines			
03/17/2019	08:10:00	8	0.1	8.40	0.0	Drop Plug			
03/17/2019	08:10:04	9	0.1	8.39	0.0	Start Displacment			

Well BIGHORN 4R 17H P26 DZ6B-00674		Field WATTENBERG		Job Start Mar/17/2019		Customer Crestone Peak		Job Number 2943831	
Date	Time 24-hr clock	Treating Pressure PSI	Flow Rate B/M	Density LB/G	Volume BBL	Message			
03/17/2019	09:03:03	-2	0.0	8.37	346.6	Check Floats 5 BBLs back			
03/17/2019	09:03:04	-2	0.0	8.36	346.6	Reset Total, Vol = 346.62 bbl			
03/17/2019	09:03:05	-2	0.0	8.36	346.6	Floats held			
03/17/2019	09:04:14	-1	0.0	8.37	0.0	End Job			
03/17/2019	09:04:16	-1	0.0	8.37	0.0	Remark			

Post Job Summary

Average Pump Rates, bbl/min					Volume of Fluid Injected, bbl			
Slurry	N2	Mud	Maximum Rate		Total Slurry 604.0	Mud	Spacer 58.0	N2
Treating Pressure Summary, psi					Breakdown Fluid			
Maximum	Final 0	Average	Bump Plug to 3890	Breakdown	Type	Volume bbl		Density lb/gal
Avg. N2 Percent %	Designed Slurry Volume 601.0 bbl		Displacement 340.0 bbl	Mix Water Temp 60 degF	Cement Circulated to Surface? <input checked="" type="checkbox"/>		Volume 40.0 bbl	
					Washed Thru Perfs <input type="checkbox"/>		To ft	
Customer or Authorized Representative John Holland			Schlumberger Supervisor NORM HASLAUER			Circulation Lost <input type="checkbox"/>		Job Completed <input checked="" type="checkbox"/>
					-		-	