

# **HighPoint Resources**

**Weld County, CO (NAD83)**

**Sec 35-T05N-R61W**

**Anschutz Coffelt 5-61-34-2532BN**

**Wellbore #1**

**Design: Wellbore #1**

## **Standard Survey Report**

**23 May, 2019**



PROJECT DETAILS: Weld County, CO (NAD83)  
Geodetic System: US State Plane 1983  
Datum: North American Datum 1983  
Ellipsoid: GRS 1980  
Zone: Colorado Northern Zone  
System Datum: Mean Sea Level  
Local North: True

WELL DETAILS: Anschutz Coffelt 5-61-34-2532BN

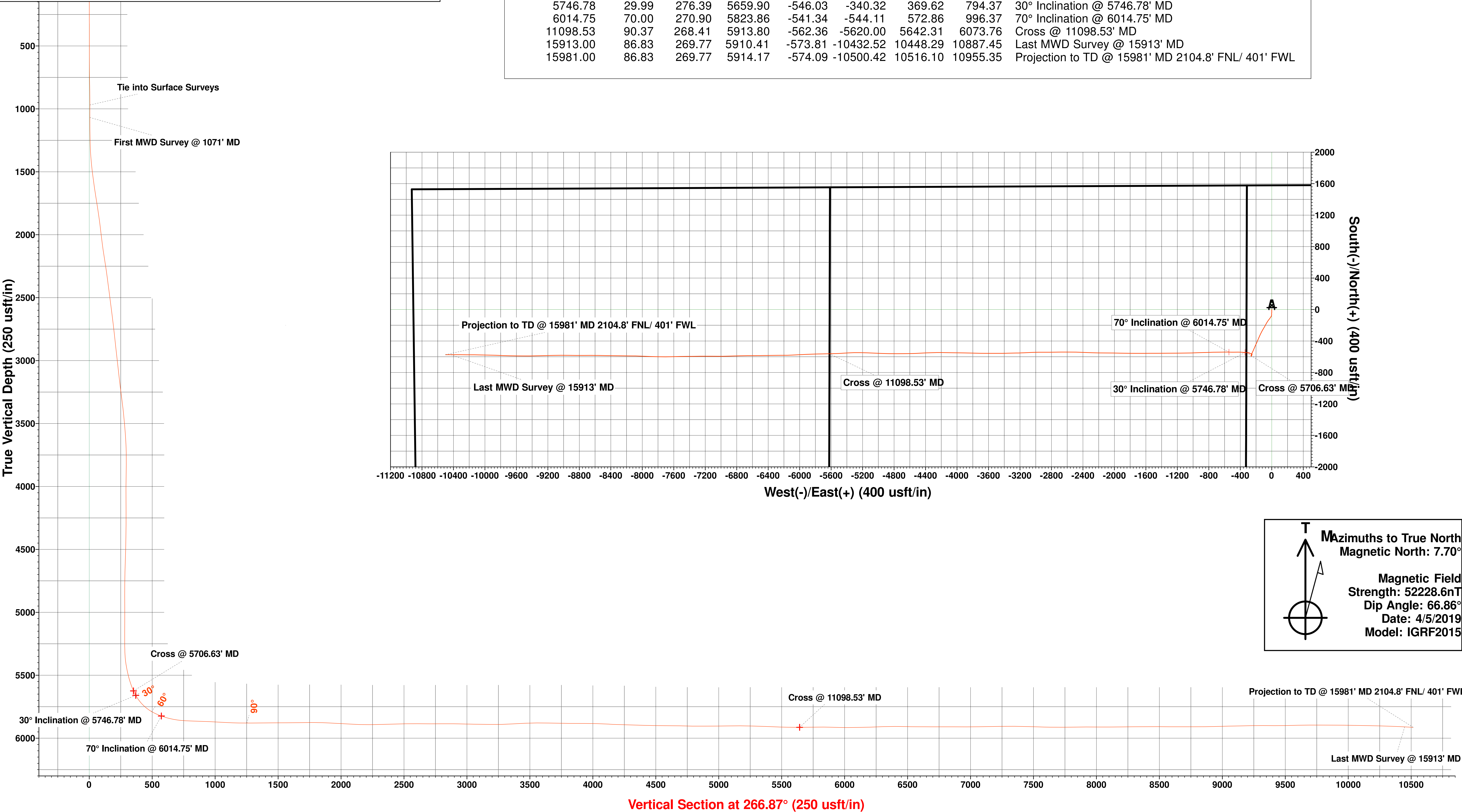
Ground Elevation:: 4491.60  
RKB Elevation: KB @ 4508.10usft (Cade 23)  
Rig Name: Cade 23



HighPoint Resources  
Project: Weld County, CO (NAD83)  
Site: Sec 35-T05N-R61W  
Well: Anschutz Coffelt 5-61-34-2532BN  
Wellbore: Wellbore #1  
Design: Wellbore #1 (Anschutz Coffelt 5-61-34-2532BN/Wellbore #1)  
Cade 23

ANNOTATIONS

MD	Inc	Azi	TVD	+N/-S	+E/-W	VSect	Departure	Annotation
971.50	3.87	170.64	969.14	-52.05	-2.27	5.11	55.74	Tie into Surface Surveys
1071.00	4.51	174.41	1068.37	-59.26	-1.34	4.57	63.01	First MWD Survey @ 1071' MD
5706.63	24.78	278.22	5624.26	-548.36	-322.01	351.46	774.87	Cross @ 5706.63' MD
5746.78	29.99	276.39	5659.90	-546.03	-340.32	369.62	794.37	30° Inclination @ 5746.78' MD
6014.75	70.00	270.90	5823.86	-541.34	-544.11	572.86	996.37	70° Inclination @ 6014.75' MD
11098.53	90.37	268.41	5913.80	-562.36	-5620.00	5642.31	6073.76	Cross @ 11098.53' MD
15913.00	86.83	269.77	5910.41	-573.81	-10432.52	10448.29	10887.45	Last MWD Survey @ 15913' MD
15981.00	86.83	269.77	5914.17	-574.09	-10500.42	10516.10	10955.35	Projection to TD @ 15981' MD 2104.8' FNL/ 401' FWL



## Survey Report

<b>Company:</b>	HighPoint Resources	<b>Local Co-ordinate Reference:</b>	Well Anschutz Coffelt 5-61-34-2532BN
<b>Project:</b>	Weld County, CO (NAD83)	<b>TVD Reference:</b>	KB @ 4508.10usft (Cade 23)
<b>Site:</b>	Sec 35-T05N-R61W	<b>MD Reference:</b>	KB @ 4508.10usft (Cade 23)
<b>Well:</b>	Anschutz Coffelt 5-61-34-2532BN	<b>North Reference:</b>	True
<b>Wellbore:</b>	Wellbore #1	<b>Survey Calculation Method:</b>	Minimum Curvature
<b>Design:</b>	Wellbore #1	<b>Database:</b>	EDM 5000.15 Single User Db

<b>Project</b>	Weld County, CO (NAD83)		
<b>Map System:</b>	US State Plane 1983	<b>System Datum:</b>	Mean Sea Level
<b>Geo Datum:</b>	North American Datum 1983		
<b>Map Zone:</b>	Colorado Northern Zone		

Site	Sec 35-T05N-R61W				
Site Position:		Northing:	1,378,423.70 usft	Latitude:	40.364722
From:	Lat/Long	Easting:	3,366,282.02 usft	Longitude:	-104.185489
Position Uncertainty:	0.00 usft	Slot Radius:	13-3/16 "	Grid Convergence:	0.85 °

Well	Anschutz Coffelt 5-61-34-2532BN					
Well Position	+N/-S	0.00 usft	Northing:	1,376,851.15 usft	Latitude:	40.360392
	+E/-W	0.00 usft	Easting:	3,366,621.10 usft	Longitude:	-104.184356
Position Uncertainty		0.00 usft	Wellhead Elevation:	usft	Ground Level:	4,491.60 usft

<b>Wellbore</b>	Wellbore #1				
<b>Magnetics</b>	<b>Model Name</b>	<b>Sample Date</b>	<b>Declination (°)</b>	<b>Dip Angle (°)</b>	<b>Field Strength (nT)</b>
	IGRF2015	4/5/2019	7.70	66.86	52,228.60435419

<b>Design</b>	Wellbore #1				
<b>Audit Notes:</b>					
<b>Version:</b>	1.0	<b>Phase:</b>	ACTUAL	<b>Tie On Depth:</b>	0.00
<b>Vertical Section:</b>	<b>Depth From (TVD) (usft)</b>	<b>+N/-S (usft)</b>	<b>+E/-W (usft)</b>	<b>Direction (°)</b>	
	0.00	0.00	0.00	266.87	

<b>Survey Program</b>	<b>Date</b>	5/23/2019			
<b>From (usft)</b>	<b>To (usft)</b>	<b>Survey (Wellbore)</b>	<b>Tool Name</b>	<b>Description</b>	
115.50	971.50	Surface Surveys (Wellbore #1)	MWD	MWD - Standard	
1,071.00	15,981.00	Atlas MWD Surveys (Wellbore #1)	MWD	MWD - Standard	

<b>Survey</b>										
<b>Measured Depth (usft)</b>	<b>Inclination (°)</b>	<b>Azimuth (°)</b>	<b>Vertical Depth (usft)</b>	<b>+N/-S (usft)</b>	<b>+E/-W (usft)</b>	<b>Vertical Section (usft)</b>	<b>Dogleg Rate (°/100usft)</b>	<b>Build Rate (°/100usft)</b>	<b>Turn Rate (°/100usft)</b>	
0.00	0.00	0.00	0.00	0.00	0.00	0.00	0.00	0.00	0.00	
115.50	0.66	345.81	115.50	0.64	-0.16	0.13	0.57	0.57	0.00	
207.50	0.18	334.12	207.49	1.29	-0.36	0.29	0.53	-0.52	-12.71	
299.50	0.35	249.13	299.49	1.32	-0.68	0.61	0.41	0.18	-92.38	
390.50	3.08	181.71	390.45	-1.22	-1.01	1.08	3.26	3.00	-74.09	
485.50	5.98	174.16	485.14	-8.70	-0.59	1.06	3.11	3.05	-7.95	
580.50	5.58	179.61	579.66	-18.24	-0.05	1.05	0.71	-0.42	5.74	
675.50	5.93	177.76	674.18	-27.76	0.17	1.34	0.42	0.37	-1.95	
770.50	5.36	189.19	768.72	-37.05	-0.35	2.37	1.32	-0.60	12.03	
865.50	4.13	194.55	863.40	-44.74	-1.91	4.35	1.37	-1.29	5.64	

# Survey Report

<b>Company:</b>	HighPoint Resources	<b>Local Co-ordinate Reference:</b>	Well Anschutz Coffelt 5-61-34-2532BN
<b>Project:</b>	Weld County, CO (NAD83)	<b>TVD Reference:</b>	KB @ 4508.10usft (Cade 23)
<b>Site:</b>	Sec 35-T05N-R61W	<b>MD Reference:</b>	KB @ 4508.10usft (Cade 23)
<b>Well:</b>	Anschutz Coffelt 5-61-34-2532BN	<b>North Reference:</b>	True
<b>Wellbore:</b>	Wellbore #1	<b>Survey Calculation Method:</b>	Minimum Curvature
<b>Design:</b>	Wellbore #1	<b>Database:</b>	EDM 5000.15 Single User Db

Survey									
Measured Depth (usft)	Inclination (°)	Azimuth (°)	Vertical Depth (usft)	+N/-S (usft)	+E/-W (usft)	Vertical Section (usft)	Dogleg Rate (°/100usft)	Build Rate (°/100usft)	Turn Rate (°/100usft)
960.50	3.96	173.01	958.16	-51.31	-2.37	5.17	1.60	-0.18	-22.67
971.50	3.87	170.64	969.14	-52.05	-2.27	5.11	1.68	-0.82	-21.55
Tie into Surface Surveys									
1,071.00	4.51	174.41	1,068.37	-59.26	-1.34	4.57	0.70	0.64	3.79
First MWD Survey @ 1071' MD									
1,163.00	4.68	187.32	1,160.08	-66.58	-1.47	5.10	1.14	0.18	14.03
1,255.00	4.99	187.72	1,251.75	-74.27	-2.48	6.53	0.34	0.34	0.43
1,347.00	7.38	205.39	1,343.22	-83.57	-5.55	10.11	3.29	2.60	19.21
1,439.00	9.28	213.58	1,434.25	-95.09	-12.19	17.36	2.43	2.07	8.90
1,531.00	11.49	215.79	1,524.73	-108.71	-21.65	27.56	2.44	2.40	2.40
1,623.00	11.71	220.10	1,614.86	-123.28	-33.03	39.71	0.97	0.24	4.68
1,718.00	14.72	215.39	1,707.33	-140.50	-46.23	53.83	3.36	3.17	-4.96
1,812.00	14.89	211.29	1,798.21	-160.56	-59.42	68.09	1.13	0.18	-4.36
1,907.00	14.41	208.78	1,890.13	-181.35	-71.45	81.24	0.84	-0.51	-2.64
2,002.00	12.59	205.92	1,982.50	-201.02	-81.67	92.52	2.04	-1.92	-3.01
2,096.00	13.52	211.29	2,074.07	-219.63	-91.85	103.71	1.63	0.99	5.71
2,191.00	15.29	211.12	2,166.08	-239.84	-104.09	117.03	1.86	1.86	-0.18
2,286.00	15.51	210.50	2,257.67	-261.51	-117.02	131.12	0.29	0.23	-0.65
2,381.00	14.49	206.71	2,349.43	-283.07	-128.80	144.07	1.49	-1.07	-3.99
2,476.00	15.91	205.21	2,441.11	-305.47	-139.69	156.16	1.55	1.49	-1.58
2,571.00	14.98	204.99	2,532.68	-328.38	-150.43	168.13	0.98	-0.98	-0.23
2,665.00	15.51	204.11	2,623.37	-350.86	-160.69	179.61	0.62	0.56	-0.94
2,760.00	14.58	204.50	2,715.11	-373.34	-170.84	190.97	0.98	-0.98	0.41
2,855.00	13.92	202.08	2,807.19	-394.81	-180.09	201.38	0.94	-0.69	-2.55
2,950.00	13.61	203.58	2,899.46	-415.64	-188.86	211.27	0.50	-0.33	1.58
3,045.00	13.52	205.78	2,991.81	-435.88	-198.16	221.66	0.55	-0.09	2.32
3,141.00	13.70	202.92	3,085.12	-456.46	-207.47	232.08	0.73	0.19	-2.98
3,235.00	14.80	204.20	3,176.22	-477.66	-216.73	242.48	1.22	1.17	1.36
3,329.00	16.22	203.40	3,266.80	-500.67	-226.86	253.86	1.53	1.51	-0.85
3,423.00	14.98	203.58	3,357.33	-523.85	-236.94	265.18	1.32	-1.32	0.19
3,518.00	11.89	204.42	3,449.72	-544.02	-245.90	275.23	3.26	-3.25	0.88
3,612.00	9.19	206.31	3,542.13	-559.57	-253.23	283.40	2.90	-2.87	2.01
3,707.00	7.11	206.49	3,636.16	-571.63	-259.21	290.03	2.19	-2.19	0.19
3,801.00	5.08	188.99	3,729.64	-580.95	-262.46	293.78	2.90	-2.16	-18.62
3,896.00	4.29	170.22	3,824.32	-588.61	-262.51	294.25	1.80	-0.83	-19.76
3,991.00	2.12	147.48	3,919.17	-593.59	-260.96	292.98	2.60	-2.28	-23.94
4,086.00	0.49	15.10	4,014.15	-594.68	-259.91	291.99	2.61	-1.72	-139.35
4,181.00	0.71	328.38	4,109.15	-593.79	-260.12	292.14	0.54	0.23	-49.18
4,276.00	0.62	200.01	4,204.14	-593.77	-260.60	292.63	1.26	-0.09	-135.13
4,372.00	1.10	24.89	4,300.14	-593.42	-260.39	292.40	1.79	0.50	-182.42
4,467.00	2.21	14.88	4,395.10	-590.82	-259.54	291.40	1.20	1.17	-10.54
4,561.00	2.78	27.71	4,489.01	-587.05	-258.01	289.67	0.85	0.61	13.65
4,655.00	3.09	37.49	4,582.89	-583.02	-255.41	286.86	0.63	0.33	10.40

# Survey Report

<b>Company:</b>	HighPoint Resources	<b>Local Co-ordinate Reference:</b>	Well Anschutz Coffelt 5-61-34-2532BN
<b>Project:</b>	Weld County, CO (NAD83)	<b>TVD Reference:</b>	KB @ 4508.10usft (Cade 23)
<b>Site:</b>	Sec 35-T05N-R61W	<b>MD Reference:</b>	KB @ 4508.10usft (Cade 23)
<b>Well:</b>	Anschutz Coffelt 5-61-34-2532BN	<b>North Reference:</b>	True
<b>Wellbore:</b>	Wellbore #1	<b>Survey Calculation Method:</b>	Minimum Curvature
<b>Design:</b>	Wellbore #1	<b>Database:</b>	EDM 5000.15 Single User Db

Survey										
Measured Depth (usft)	Inclination (°)	Azimuth (°)	Vertical Depth (usft)	+N/-S (usft)	+E/-W (usft)	Vertical Section (usft)	Dogleg Rate (°/100usft)	Build Rate (°/100usft)	Turn Rate (°/100usft)	
4,750.00	3.00	33.70	4,677.75	-578.92	-252.47	283.70	0.23	-0.09	-3.99	
4,845.00	1.90	359.58	4,772.67	-575.28	-251.10	282.13	1.87	-1.16	-35.92	
4,939.00	1.28	2.18	4,866.63	-572.67	-251.08	281.96	0.66	-0.66	2.77	
5,035.00	1.28	346.71	4,962.61	-570.56	-251.28	282.05	0.36	0.00	-16.11	
5,129.00	1.19	0.11	5,056.59	-568.56	-251.52	282.18	0.32	-0.10	14.26	
5,223.00	1.10	5.88	5,150.57	-566.69	-251.43	281.99	0.16	-0.10	6.14	
5,317.00	1.50	2.18	5,244.54	-564.56	-251.29	281.73	0.43	0.43	-3.94	
5,412.00	3.40	288.72	5,339.47	-562.41	-253.91	284.23	3.48	2.00	-77.33	
5,474.00	8.40	281.71	5,401.12	-560.90	-260.09	290.32	8.13	8.06	-11.31	
5,506.00	10.52	282.28	5,432.69	-559.81	-265.23	295.40	6.63	6.63	1.78	
5,546.00	12.81	285.28	5,471.86	-557.86	-273.08	303.13	5.92	5.73	7.50	
5,600.00	16.00	283.65	5,524.15	-554.53	-286.09	315.93	5.95	5.91	-3.02	
5,659.00	20.33	278.76	5,580.20	-551.05	-304.13	333.76	7.77	7.34	-8.29	
5,678.00	21.83	278.19	5,597.93	-550.04	-310.89	340.45	7.97	7.89	-3.00	
5,693.00	23.02	279.02	5,611.80	-549.18	-316.55	346.05	8.21	7.93	5.53	
5,706.63	24.78	278.22	5,624.26	-548.36	-322.01	351.46	13.13	12.92	-5.84	
<b>Cross @ 5706.63' MD</b>										
5,746.78	29.99	276.39	5,659.90	-546.03	-340.32	369.62	13.13	12.97	-4.56	
<b>30° Inclination @ 5746.78' MD</b>										
5,787.00	35.22	275.06	5,693.77	-543.89	-361.87	391.03	13.13	13.01	-3.31	
5,817.00	40.92	273.38	5,717.38	-542.55	-380.31	409.37	19.31	19.00	-5.60	
5,842.00	45.21	272.06	5,735.64	-541.74	-397.36	426.34	17.53	17.16	-5.28	
5,882.00	51.61	269.33	5,762.18	-541.42	-427.26	456.17	16.79	16.00	-6.83	
5,952.00	63.85	269.68	5,799.48	-541.91	-486.33	515.19	17.49	17.49	0.50	
5,978.00	66.81	270.74	5,810.33	-541.83	-509.95	538.77	11.97	11.38	4.08	
6,014.75	70.00	270.90	5,823.86	-541.34	-544.11	572.86	8.69	8.68	0.44	
<b>70° Inclination @ 6014.75' MD</b>										
6,028.00	71.15	270.96	5,828.26	-541.13	-556.61	585.32	8.69	8.68	0.43	
6,073.00	75.30	269.46	5,841.25	-540.98	-599.68	628.32	9.76	9.22	-3.33	
6,106.00	78.48	269.72	5,848.73	-541.21	-631.82	660.42	9.67	9.64	0.79	
6,167.00	84.00	268.80	5,858.02	-541.99	-692.08	720.63	9.17	9.05	-1.51	
6,219.00	87.10	268.80	5,862.05	-543.08	-743.90	772.44	5.96	5.96	0.00	
6,317.00	88.47	268.23	5,865.84	-545.62	-841.79	870.32	1.51	1.40	-0.58	
6,353.00	88.16	268.23	5,866.90	-546.73	-877.76	906.30	0.86	-0.86	0.00	
6,448.00	86.74	267.70	5,871.13	-550.10	-972.60	1,001.18	1.60	-1.49	-0.56	
6,542.00	87.10	269.24	5,876.18	-552.60	-1,066.43	1,095.01	1.68	0.38	1.64	
6,637.00	88.91	269.28	5,879.48	-553.83	-1,161.36	1,189.86	1.91	1.91	0.04	
6,732.00	90.59	269.37	5,879.90	-554.95	-1,256.35	1,284.77	1.77	1.77	0.09	
6,827.00	90.41	269.90	5,879.07	-555.55	-1,351.35	1,379.66	0.59	-0.19	0.56	
6,921.00	90.50	269.95	5,878.32	-555.68	-1,445.34	1,473.52	0.11	0.10	0.05	
7,016.00	90.10	269.59	5,877.83	-556.06	-1,540.34	1,568.40	0.57	-0.42	-0.38	
7,112.00	90.94	269.95	5,876.95	-556.44	-1,636.33	1,664.27	0.95	0.88	0.38	
7,206.00	90.28	269.72	5,875.95	-556.71	-1,730.33	1,758.14	0.74	-0.70	-0.24	
7,301.00	88.20	270.69	5,877.21	-556.37	-1,825.31	1,852.96	2.42	-2.19	1.02	



# Survey Report

<b>Company:</b>	HighPoint Resources	<b>Local Co-ordinate Reference:</b>	Well Anschutz Coffelt 5-61-34-2532BN
<b>Project:</b>	Weld County, CO (NAD83)	<b>TVD Reference:</b>	KB @ 4508.10usft (Cade 23)
<b>Site:</b>	Sec 35-T05N-R61W	<b>MD Reference:</b>	KB @ 4508.10usft (Cade 23)
<b>Well:</b>	Anschutz Coffelt 5-61-34-2532BN	<b>North Reference:</b>	True
<b>Wellbore:</b>	Wellbore #1	<b>Survey Calculation Method:</b>	Minimum Curvature
<b>Design:</b>	Wellbore #1	<b>Database:</b>	EDM 5000.15 Single User Db

Survey									
Measured Depth (usft)	Inclination (°)	Azimuth (°)	Vertical Depth (usft)	+N/-S (usft)	+E/-W (usft)	Vertical Section (usft)	Dogleg Rate (°/100usft)	Build Rate (°/100usft)	Turn Rate (°/100usft)
7,397.00	86.83	271.40	5,881.38	-554.62	-1,921.20	1,948.62	1.61	-1.43	0.74
7,492.00	86.96	270.78	5,886.52	-552.82	-2,016.05	2,043.22	0.67	0.14	-0.65
7,587.00	87.23	270.08	5,891.34	-552.11	-2,110.92	2,137.91	0.79	0.28	-0.74
7,681.00	91.30	270.69	5,892.54	-551.48	-2,204.89	2,231.71	4.38	4.33	0.65
7,776.00	91.16	272.41	5,890.50	-548.91	-2,299.83	2,326.37	1.82	-0.15	1.81
7,871.00	91.83	272.72	5,888.02	-544.66	-2,394.70	2,420.87	0.78	0.71	0.33
7,965.00	91.21	271.13	5,885.53	-541.50	-2,488.61	2,514.46	1.81	-0.66	-1.69
8,060.00	89.00	269.86	5,885.36	-540.68	-2,583.60	2,609.27	2.68	-2.33	-1.34
8,155.00	90.15	269.68	5,886.06	-541.06	-2,678.60	2,704.14	1.23	1.21	-0.19
8,249.00	90.06	269.02	5,885.89	-542.13	-2,772.59	2,798.05	0.71	-0.10	-0.70
8,343.00	89.88	270.30	5,885.94	-542.69	-2,866.59	2,891.94	1.38	-0.19	1.36
8,439.00	88.25	269.46	5,887.50	-542.89	-2,962.57	2,987.79	1.91	-1.70	-0.88
8,534.00	89.57	267.70	5,889.31	-545.24	-3,057.52	3,082.72	2.32	1.39	-1.85
8,629.00	88.64	266.73	5,890.80	-549.86	-3,152.39	3,177.71	1.41	-0.98	-1.02
8,724.00	91.65	269.24	5,890.56	-553.20	-3,247.31	3,272.67	4.13	3.17	2.64
8,818.00	93.11	268.45	5,886.65	-555.09	-3,341.21	3,366.53	1.77	1.55	-0.84
8,912.00	93.28	269.77	5,881.41	-556.55	-3,435.05	3,460.31	1.41	0.18	1.40
9,007.00	89.70	269.81	5,878.94	-556.89	-3,530.00	3,555.14	3.77	-3.77	0.04
9,101.00	89.22	270.47	5,879.83	-556.67	-3,624.00	3,648.98	0.87	-0.51	0.70
9,196.00	88.64	270.43	5,881.60	-555.92	-3,718.98	3,743.78	0.61	-0.61	-0.04
9,292.00	90.10	272.37	5,882.66	-553.57	-3,814.94	3,839.47	2.53	1.52	2.02
9,387.00	89.40	270.34	5,883.07	-551.33	-3,909.90	3,934.17	2.26	-0.74	-2.14
9,482.00	88.73	271.05	5,884.62	-550.18	-4,004.88	4,028.94	1.03	-0.71	0.75
9,576.00	86.61	271.09	5,888.44	-548.42	-4,098.78	4,122.61	2.26	-2.26	0.04
9,672.00	88.60	270.56	5,892.46	-547.04	-4,194.68	4,218.29	2.15	2.07	-0.55
9,767.00	87.80	268.62	5,895.44	-547.72	-4,289.63	4,313.13	2.21	-0.84	-2.04
9,863.00	88.56	267.74	5,898.49	-550.77	-4,385.53	4,409.06	1.21	0.79	-0.92
9,958.00	89.13	266.77	5,900.40	-555.32	-4,480.40	4,504.03	1.18	0.60	-1.02
10,054.00	90.01	268.45	5,901.12	-559.32	-4,576.31	4,600.02	1.98	0.92	1.75
10,149.00	88.69	269.64	5,902.20	-560.90	-4,671.29	4,694.94	1.87	-1.39	1.25
10,245.00	88.78	269.59	5,904.32	-561.55	-4,767.26	4,790.81	0.11	0.09	-0.05
10,340.00	90.85	271.40	5,904.63	-560.73	-4,862.25	4,885.61	2.89	2.18	1.91
10,436.00	90.06	272.15	5,903.87	-557.75	-4,958.20	4,981.25	1.13	-0.82	0.78
10,531.00	91.12	272.85	5,902.89	-553.61	-5,053.10	5,075.79	1.34	1.12	0.74
10,626.00	89.70	271.75	5,902.21	-549.80	-5,148.02	5,170.35	1.89	-1.49	-1.16
10,721.00	88.64	270.56	5,903.58	-547.88	-5,242.98	5,265.08	1.68	-1.12	-1.25
10,815.00	88.11	267.79	5,906.25	-549.24	-5,336.93	5,358.95	3.00	-0.56	-2.95
10,910.00	87.27	266.11	5,910.08	-554.28	-5,431.71	5,453.87	1.98	-0.88	-1.77
11,004.00	88.91	267.83	5,913.21	-559.25	-5,525.52	5,547.81	2.53	1.74	1.83
11,098.00	90.37	268.40	5,913.80	-562.34	-5,619.47	5,641.79	1.67	1.55	0.61
11,098.53	90.37	268.41	5,913.80	-562.36	-5,620.00	5,642.31	1.20	0.65	1.01
Cross @ 11098.53' MD									
11,194.00	90.99	269.37	5,912.66	-564.21	-5,715.44	5,737.72	1.20	0.65	1.01
11,288.00	89.57	268.23	5,912.20	-566.18	-5,809.41	5,831.66	1.94	-1.51	-1.21

# Survey Report

<b>Company:</b>	HighPoint Resources	<b>Local Co-ordinate Reference:</b>	Well Anschutz Coffelt 5-61-34-2532BN
<b>Project:</b>	Weld County, CO (NAD83)	<b>TVD Reference:</b>	KB @ 4508.10usft (Cade 23)
<b>Site:</b>	Sec 35-T05N-R61W	<b>MD Reference:</b>	KB @ 4508.10usft (Cade 23)
<b>Well:</b>	Anschutz Coffelt 5-61-34-2532BN	<b>North Reference:</b>	True
<b>Wellbore:</b>	Wellbore #1	<b>Survey Calculation Method:</b>	Minimum Curvature
<b>Design:</b>	Wellbore #1	<b>Database:</b>	EDM 5000.15 Single User Db

Survey									
Measured Depth (usft)	Inclination (°)	Azimuth (°)	Vertical Depth (usft)	+N/-S (usft)	+E/-W (usft)	Vertical Section (usft)	Dogleg Rate (°/100usft)	Build Rate (°/100usft)	Turn Rate (°/100usft)
11,382.00	88.11	267.65	5,914.11	-569.56	-5,903.33	5,925.62	1.67	-1.55	-0.62
11,476.00	90.06	267.04	5,915.61	-573.91	-5,997.21	6,019.60	2.17	2.07	-0.65
11,571.00	91.03	267.17	5,914.71	-578.71	-6,092.09	6,114.59	1.03	1.02	0.14
11,666.00	91.91	269.81	5,912.27	-581.21	-6,187.01	6,209.52	2.93	0.93	2.78
11,760.00	92.44	269.11	5,908.70	-582.10	-6,280.94	6,303.35	0.93	0.56	-0.74
11,855.00	89.70	269.37	5,906.93	-583.36	-6,375.91	6,398.24	2.90	-2.88	0.27
11,950.00	88.42	268.89	5,908.48	-584.80	-6,470.88	6,493.16	1.44	-1.35	-0.51
12,045.00	90.37	270.08	5,909.49	-585.65	-6,565.86	6,588.04	2.40	2.05	1.25
12,140.00	89.26	269.28	5,909.79	-586.18	-6,660.86	6,682.93	1.44	-1.17	-0.84
12,235.00	90.63	268.76	5,909.89	-587.81	-6,755.84	6,777.86	1.54	1.44	-0.55
12,331.00	89.44	267.79	5,909.83	-590.70	-6,851.80	6,873.83	1.60	-1.24	-1.01
12,426.00	89.79	268.98	5,910.47	-593.37	-6,946.76	6,968.79	1.31	0.37	1.25
12,521.00	91.60	270.30	5,909.31	-593.97	-7,041.74	7,063.67	2.36	1.91	1.39
12,616.00	90.32	270.17	5,907.72	-593.58	-7,136.72	7,158.49	1.35	-1.35	-0.14
12,711.00	91.47	269.99	5,906.24	-593.45	-7,231.71	7,253.32	1.23	1.21	-0.19
12,806.00	88.91	268.80	5,905.92	-594.45	-7,326.70	7,348.22	2.97	-2.69	-1.25
12,901.00	88.78	269.95	5,907.84	-595.49	-7,421.67	7,443.11	1.22	-0.14	1.21
12,995.00	88.07	268.58	5,910.42	-596.69	-7,515.62	7,536.99	1.64	-0.76	-1.46
13,090.00	89.13	268.71	5,912.74	-598.94	-7,610.57	7,631.91	1.12	1.12	0.14
13,185.00	89.97	268.93	5,913.49	-600.89	-7,705.54	7,726.86	0.91	0.88	0.23
13,280.00	91.43	271.97	5,912.33	-600.15	-7,800.52	7,821.65	3.55	1.54	3.20
13,375.00	89.93	271.75	5,911.20	-597.07	-7,895.46	7,916.28	1.60	-1.58	-0.23
13,471.00	89.57	272.90	5,911.62	-593.17	-7,991.38	8,011.84	1.26	-0.38	1.20
13,565.00	90.32	271.05	5,911.71	-589.93	-8,085.32	8,105.47	2.12	0.80	-1.97
13,660.00	91.12	270.12	5,910.52	-588.96	-8,180.30	8,200.26	1.29	0.84	-0.98
13,755.00	90.01	270.87	5,909.58	-588.14	-8,275.29	8,295.06	1.41	-1.17	0.79
13,850.00	90.68	270.83	5,909.01	-586.73	-8,370.28	8,389.83	0.71	0.71	-0.04
13,944.00	89.88	271.13	5,908.55	-585.12	-8,464.26	8,483.58	0.91	-0.85	0.32
14,040.00	89.26	270.96	5,909.27	-583.37	-8,560.25	8,579.33	0.67	-0.65	-0.18
14,135.00	90.46	269.95	5,909.50	-582.62	-8,655.24	8,674.14	1.65	1.26	-1.06
14,230.00	89.79	269.46	5,909.29	-583.11	-8,750.24	8,769.02	0.87	-0.71	-0.52
14,326.00	90.46	270.25	5,909.08	-583.35	-8,846.23	8,864.89	1.08	0.70	0.82
14,421.00	92.00	271.75	5,907.04	-581.69	-8,941.19	8,959.61	2.26	1.62	1.58
14,510.00	91.12	269.11	5,904.62	-581.03	-9,030.15	9,048.40	3.13	-0.99	-2.97
14,602.00	91.03	269.11	5,902.89	-582.46	-9,122.12	9,140.32	0.10	-0.10	0.00
14,694.00	91.38	268.14	5,900.96	-584.66	-9,214.07	9,232.25	1.12	0.38	-1.05
14,786.00	89.88	268.67	5,899.95	-587.22	-9,306.03	9,324.21	1.73	-1.63	0.58
14,878.00	89.35	268.76	5,900.57	-589.29	-9,398.00	9,416.16	0.58	-0.58	0.10
14,970.00	91.43	270.39	5,899.94	-589.97	-9,489.99	9,508.05	2.87	2.26	1.77
15,062.00	91.74	270.34	5,897.40	-589.38	-9,581.95	9,599.84	0.34	0.34	-0.05
15,154.00	89.88	271.44	5,896.09	-587.95	-9,673.93	9,691.60	2.35	-2.02	1.20
15,246.00	90.10	272.41	5,896.11	-584.86	-9,765.87	9,783.24	1.08	0.24	1.05
15,339.00	89.66	271.66	5,896.31	-581.56	-9,858.81	9,875.86	0.93	-0.47	-0.81

## Survey Report

<b>Company:</b>	HighPoint Resources	<b>Local Co-ordinate Reference:</b>	Well Anschutz Coffelt 5-61-34-2532BN
<b>Project:</b>	Weld County, CO (NAD83)	<b>TVD Reference:</b>	KB @ 4508.10usft (Cade 23)
<b>Site:</b>	Sec 35-T05N-R61W	<b>MD Reference:</b>	KB @ 4508.10usft (Cade 23)
<b>Well:</b>	Anschutz Coffelt 5-61-34-2532BN	<b>North Reference:</b>	True
<b>Wellbore:</b>	Wellbore #1	<b>Survey Calculation Method:</b>	Minimum Curvature
<b>Design:</b>	Wellbore #1	<b>Database:</b>	EDM 5000.15 Single User Db

Survey										
Measured Depth (usft)	Inclination (°)	Azimuth (°)	Vertical Depth (usft)	+N/-S (usft)	+E/-W (usft)	Vertical Section (usft)	Dogleg Rate (°/100usft)	Build Rate (°/100usft)	Turn Rate (°/100usft)	
15,430.00	89.26	270.91	5,897.16	-579.52	-9,949.79	9,966.59	0.93	-0.44	-0.82	
15,523.00	88.86	271.71	5,898.69	-577.39	-10,042.75	10,059.29	0.96	-0.43	0.86	
15,615.00	88.95	270.61	5,900.45	-575.53	-10,134.71	10,151.02	1.20	0.10	-1.20	
15,707.00	88.56	270.21	5,902.45	-574.87	-10,226.69	10,242.82	0.61	-0.42	-0.43	
15,799.00	88.03	270.65	5,905.18	-574.18	-10,318.64	10,334.60	0.75	-0.58	0.48	
15,890.00	86.96	269.90	5,909.16	-573.75	-10,409.55	10,425.35	1.44	-1.18	-0.82	
15,913.00	86.83	269.77	5,910.41	-573.81	-10,432.52	10,448.29	0.80	-0.57	-0.57	
Last MWD Survey @ 15913' MD										
15,981.00	86.83	269.77	5,914.17	-574.09	-10,500.42	10,516.10	0.00	0.00	0.00	
Projection to TD @ 15981' MD 2104.8' FNL/ 401' FWL										

Design Targets										
Target Name	Dip Angle (°)	Dip Dir. (°)	TVD (usft)	+N/-S (usft)	+E/-W (usft)	Northing (usft)	Easting (usft)	Latitude	Longitude	
Cross @ 5706.63' MD	0.00	0.00	5,624.26	-548.36	-322.00	1,376,298.08	3,366,307.27	40.358887	-104.185512	
- actual wellpath misses target center by 0.01usft at 5706.63usft MD (5624.26 TVD, -548.36 N, -322.01 E)										
- Point										
30° Inclination @ 5746.7	0.00	0.00	5,659.89	-545.95	-340.31	1,376,300.22	3,366,288.93	40.358893	-104.185577	
- actual wellpath misses target center by 0.09usft at 5746.78usft MD (5659.90 TVD, -546.03 N, -340.32 E)										
- Point										
70° Inclination @ 6014.7	0.00	0.00	5,823.86	-541.34	-544.12	1,376,301.80	3,366,085.08	40.358906	-104.186309	
- actual wellpath hits target center										
- Point										
Cross @ 11098.53' MD	0.00	0.00	5,913.80	-562.36	-5,620.00	1,376,205.48	3,361,010.06	40.358847	-104.204523	
- actual wellpath hits target center										
- Point										

Design Annotations					
Measured Depth (usft)	Vertical Depth (usft)	Local Coordinates			
		+N/-S (usft)	+E/-W (usft)	Comment	
971.50	969.14	-52.05	-2.27	Tie into Surface Surveys	
1,071.00	1,068.37	-59.26	-1.34	First MWD Survey @ 1071' MD	
5,706.63	5,624.26	-548.36	-322.01	Cross @ 5706.63' MD	
5,746.78	5,659.90	-546.03	-340.32	30° Inclination @ 5746.78' MD	
6,014.75	5,823.86	-541.34	-544.11	70° Inclination @ 6014.75' MD	
11,098.53	5,913.80	-562.36	-5,620.00	Cross @ 11098.53' MD	
15,913.00	5,910.41	-573.81	-10,432.52	Last MWD Survey @ 15913' MD	
15,981.00	5,914.17	-574.09	-10,500.42	Projection to TD @ 15981' MD 2104.8' FNL/ 401' FWL	

Checked By: \_\_\_\_\_ Approved By: \_\_\_\_\_ Date: \_\_\_\_\_