

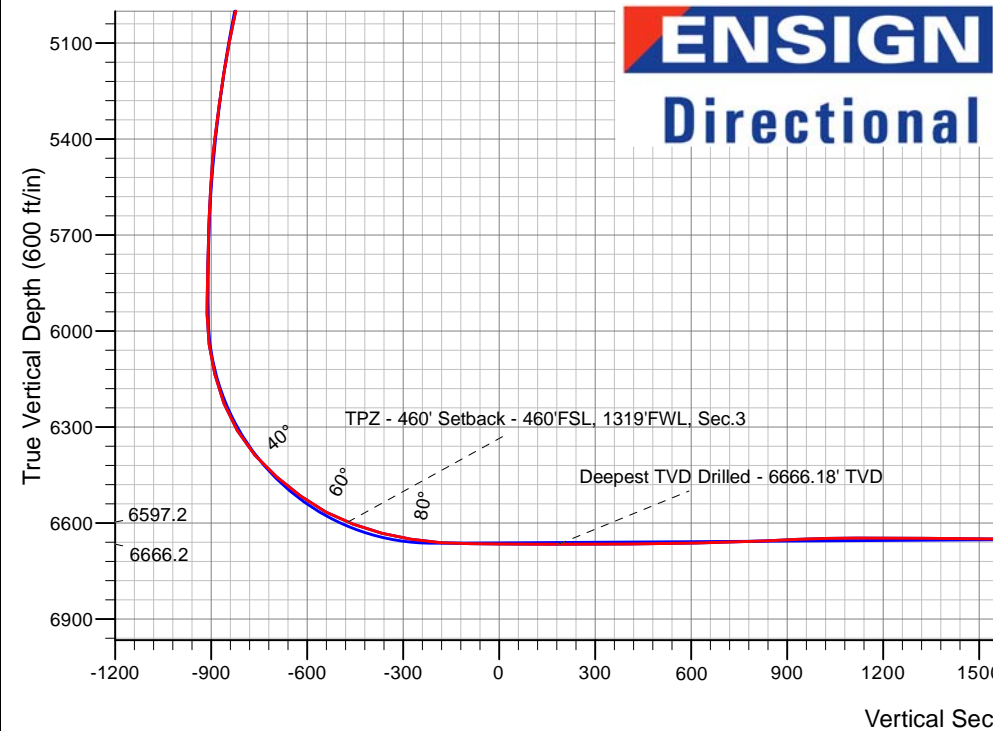
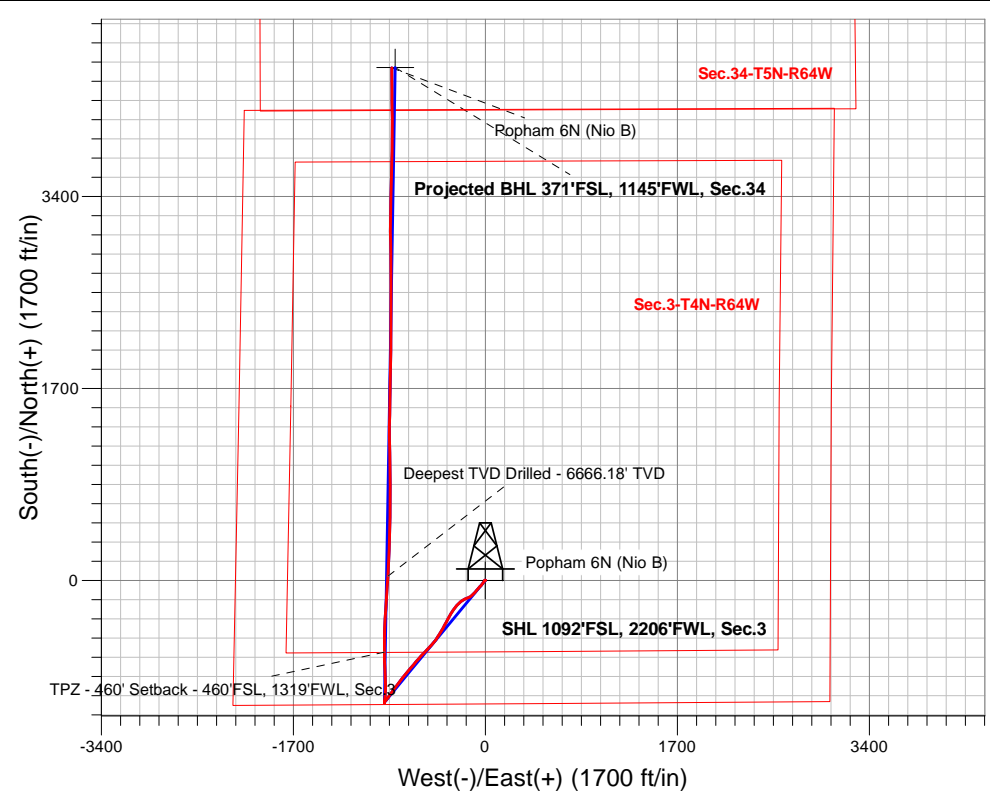
# PDC Energy Inc. DJ Basin

Well Name: **Popham 6N (Nio B)**

Surface Location: Popham 4N64W03 Pad Sec.3-T4N-R64W  
 North American Datum 1983 , US State Plane 1983, Colorado Northern Zone  
 Ground Elevation: 4662.0  
 +N/-S +E/-W Northing Easting Latitude Longitude Slot  
 0.0 0.0 367108.38 3268156.88 40.337121 -104.538048  
 Original Well Elev WELL @ 4685.0ft (Original Well Elev)

## FINAL SURVEY

**Projected Bottom Hole Location**  
**12,189'MD 6619'TVD 4538'N & 830'W of SHL**  
**91.58 degree Incl @ 358.85 degree AZM**



**ENSIGN**  
**Directional**

Popham 4N64W03 Pad Sec.3-T4N-R64W  
 Popham 6N (Nio B)  
 Popham 6N Wellbore #1  
 10:58, May 06 2019

### ANNOTATIONS

TVD	MD	Annotation
6597.2	7003.1	TPZ - 460' Setback - 460'FSL, 1319'FWL, Sec.3
6666.2	7686.0	Deepest TVD Drilled - 6666.18' TVD

### LEGEND

- △ Popham 6N (Nio B), Popham 6N Wellbore #1, Plan #1 (4-29-19) V0
- Popham 6N Wellbore #1
- Survey #1

**Projected BHL 371'FSL, 1145'FWL, Sec.34**

Popham 6N (Nio B)

Vertical Section at 350.03° (600 ft/in)



## **PDC Energy Inc. DJ Basin**

**SEC.3-T4N-R64W**

**Popham 4N64W03 Pad Sec.3-T4N-R64W**

**Popham 6N (Nio B)**

**Popham 6N Wellbore #1**

**Survey: Survey #1**

## **Standard Survey Report**

**06 May, 2019**

<b>Company:</b>	PDC Energy Inc. DJ Basin	<b>Local Co-ordinate Reference:</b>	Well Popham 6N (Nio B)
<b>Project:</b>	SEC.3-T4N-R64W	<b>TVD Reference:</b>	WELL @ 4685.0ft (Original Well Elev)
<b>Site:</b>	Popham 4N64W03 Pad Sec.3-T4N-R64W	<b>MD Reference:</b>	WELL @ 4685.0ft (Original Well Elev)
<b>Well:</b>	Popham 6N (Nio B)	<b>North Reference:</b>	True
<b>Wellbore:</b>	Popham 6N Wellbore #1	<b>Survey Calculation Method:</b>	Minimum Curvature
<b>Design:</b>	Popham 6N Wellbore #1	<b>Database:</b>	US_EDM

<b>Project</b>	SEC.3-T4N-R64W, Weld County, CO		
<b>Map System:</b>	US State Plane 1983	<b>System Datum:</b>	Mean Sea Level
<b>Geo Datum:</b>	North American Datum 1983		Using Well Reference Point
<b>Map Zone:</b>	Colorado Northern Zone		Using geodetic scale factor

Site	Popham 4N64W03 Pad Sec.3-T4N-R64W				
Site Position:		Northing:	1,367,183.37 usft	Latitude:	40.337327
From:	Lat/Long	Easting:	3,268,156.99 usft	Longitude:	-104.538045
Position Uncertainty:	0.0 ft	Slot Radius:	13-3/16 "	Grid Convergence:	0.62 °

Well	Popham 6N (Nio B)					
Well Position	+N/-S	0.0 ft	Northing:	1,367,108.38 usft	Latitude:	40.337121
	+E/-W	0.0 ft	Easting:	3,268,156.89 usft	Longitude:	-104.538048
Position Uncertainty		0.0 ft	Wellhead Elevation:	0.0 ft	Ground Level:	4,662.0 ft

<b>Wellbore</b>	Popham 6N Wellbore #1				
<b>Magnetics</b>	<b>Model Name</b>	<b>Sample Date</b>	<b>Declination (°)</b>	<b>Dip Angle (°)</b>	<b>Field Strength (nT)</b>
	HDGM	4/29/2019	8.13	66.85	52,157

<b>Design</b>	Popham 6N Wellbore #1				
<b>Audit Notes:</b>					
<b>Version:</b>	1.0	<b>Phase:</b>	ACTUAL	<b>Tie On Depth:</b>	0.0
<b>Vertical Section:</b>	<b>Depth From (TVD) (ft)</b>	<b>+N/-S (ft)</b>	<b>+E/-W (ft)</b>	<b>Direction (°)</b>	
	0.0	0.0	0.0	350.03	

<b>Survey Program</b>	<b>Date</b>	5/6/2019			
<b>From (ft)</b>	<b>To (ft)</b>	<b>Survey (Wellbore)</b>	<b>Tool Name</b>	<b>Description</b>	
156.0	12,189.0	Survey #1 (Popham 6N Wellbore #1)	MWD	MWD - Standard	

<b>Survey</b>										
<b>Measured Depth (ft)</b>	<b>Inclination (°)</b>	<b>Azimuth (°)</b>	<b>Vertical Depth (ft)</b>	<b>+N/-S (ft)</b>	<b>+E/-W (ft)</b>	<b>Vertical Section (ft)</b>	<b>Dogleg Rate (°/100usft)</b>	<b>Build Rate (°/100usft)</b>	<b>Turn Rate (°/100usft)</b>	
0.0	0.00	0.00	0.0	0.0	0.0	0.0	0.00	0.00	0.00	
1.0	0.00	254.33	1.0	0.0	0.0	0.0	0.31	0.31	0.00	
<b>SHL 1092'FSL, 2206'FWL, Sec.3</b>										
156.0	0.48	254.33	156.0	-0.2	-0.6	-0.1	0.31	0.31	0.00	
251.0	0.38	285.33	251.0	-0.2	-1.3	0.0	0.26	-0.11	32.63	
346.0	0.21	316.78	346.0	0.0	-1.7	0.3	0.24	-0.18	33.11	
440.0	0.23	291.54	440.0	0.2	-2.0	0.6	0.10	0.02	-26.85	
535.0	0.23	256.67	535.0	0.2	-2.4	0.6	0.15	0.00	-36.71	
630.0	1.00	233.24	630.0	-0.3	-3.2	0.3	0.84	0.81	-24.66	
724.0	3.32	218.00	723.9	-2.9	-5.6	-1.9	2.52	2.47	-16.21	
819.0	4.22	214.95	818.7	-8.0	-9.3	-6.3	0.97	0.95	-3.21	

<b>Company:</b>	PDC Energy Inc. DJ Basin	<b>Local Co-ordinate Reference:</b>	Well Popham 6N (Nio B)
<b>Project:</b>	SEC.3-T4N-R64W	<b>TVD Reference:</b>	WELL @ 4685.0ft (Original Well Elev)
<b>Site:</b>	Popham 4N64W03 Pad Sec.3-T4N-R64W	<b>MD Reference:</b>	WELL @ 4685.0ft (Original Well Elev)
<b>Well:</b>	Popham 6N (Nio B)	<b>North Reference:</b>	True
<b>Wellbore:</b>	Popham 6N Wellbore #1	<b>Survey Calculation Method:</b>	Minimum Curvature
<b>Design:</b>	Popham 6N Wellbore #1	<b>Database:</b>	US_EDM

Survey									
Measured Depth (ft)	Inclination (°)	Azimuth (°)	Vertical Depth (ft)	+N/-S (ft)	+E/-W (ft)	Vertical Section (ft)	Dogleg Rate (°/100usft)	Build Rate (°/100usft)	Turn Rate (°/100usft)
914.0	6.10	219.91	913.3	-14.7	-14.5	-12.0	2.03	1.98	5.22
1,008.0	7.71	215.55	1,006.6	-23.7	-21.4	-19.6	1.80	1.71	-4.64
1,103.0	8.49	219.40	1,100.7	-34.3	-29.5	-28.6	1.00	0.82	4.05
1,198.0	9.65	219.85	1,194.5	-45.8	-39.1	-38.4	1.22	1.22	0.47
1,293.0	11.27	222.15	1,287.9	-58.8	-50.4	-49.2	1.76	1.71	2.42
1,388.0	12.39	223.01	1,380.9	-73.1	-63.6	-61.0	1.19	1.18	0.91
1,482.0	12.40	219.63	1,472.7	-88.3	-76.9	-73.6	0.77	0.01	-3.60
1,594.0	13.28	222.63	1,581.9	-107.0	-93.3	-89.2	0.99	0.79	2.68
1,669.0	12.59	223.26	1,655.0	-119.3	-104.7	-99.4	0.94	-0.92	0.84
1,764.0	12.40	227.31	1,747.8	-133.8	-119.3	-111.1	0.94	-0.20	4.26
1,859.0	12.87	239.37	1,840.5	-146.1	-135.9	-120.3	2.82	0.49	12.69
1,953.0	14.94	251.47	1,931.7	-155.3	-156.4	-125.8	3.79	2.20	12.87
2,047.0	18.06	243.72	2,021.9	-165.6	-181.0	-131.7	4.06	3.32	-8.24
2,143.0	19.25	236.03	2,112.8	-181.0	-207.5	-142.3	2.84	1.24	-8.01
2,238.0	19.33	227.11	2,202.5	-200.5	-232.0	-157.3	3.10	0.08	-9.39
2,333.0	19.60	218.82	2,292.1	-223.6	-253.5	-176.3	2.92	0.28	-8.73
2,428.0	20.41	215.15	2,381.4	-249.5	-273.0	-198.5	1.57	0.85	-3.86
2,546.0	20.24	214.25	2,492.0	-283.2	-296.4	-227.6	0.30	-0.14	-0.76
2,641.0	20.74	209.96	2,581.0	-311.4	-314.0	-252.3	1.67	0.53	-4.52
2,735.0	20.48	209.12	2,669.0	-340.2	-330.3	-277.8	0.42	-0.28	-0.89
2,830.0	20.35	207.91	2,758.0	-369.3	-346.2	-303.8	0.46	-0.14	-1.27
2,924.0	19.17	206.95	2,846.5	-397.5	-360.8	-329.0	1.30	-1.26	-1.02
3,018.0	20.55	210.82	2,934.9	-425.4	-376.2	-353.8	2.03	1.47	4.12
3,112.0	19.34	210.15	3,023.3	-453.1	-392.5	-378.2	1.31	-1.29	-0.71
3,207.0	17.46	210.17	3,113.4	-479.0	-407.6	-401.2	1.98	-1.98	0.02
3,302.0	18.48	215.12	3,203.8	-503.6	-423.4	-422.7	1.93	1.07	5.21
3,396.0	16.88	215.04	3,293.3	-527.0	-439.8	-442.9	1.70	-1.70	-0.09
3,491.0	17.06	218.98	3,384.2	-549.1	-456.5	-461.8	1.23	0.19	4.15
3,586.0	18.28	222.42	3,474.7	-570.9	-475.3	-480.0	1.69	1.28	3.62
3,682.0	19.92	222.58	3,565.4	-594.1	-496.5	-499.1	1.71	1.71	0.17
3,776.0	21.95	223.48	3,653.2	-618.6	-519.5	-519.3	2.19	2.16	0.96
3,871.0	22.16	222.67	3,741.3	-644.7	-543.8	-540.8	0.39	0.22	-0.85
3,967.0	21.81	222.89	3,830.3	-671.1	-568.2	-562.5	0.37	-0.36	0.23
4,062.0	21.02	221.68	3,918.7	-696.7	-591.6	-583.8	0.95	-0.83	-1.27
4,157.0	20.56	221.07	4,007.5	-722.0	-613.9	-604.8	0.54	-0.48	-0.64
4,252.0	19.61	221.07	4,096.8	-746.6	-635.3	-625.3	1.00	-1.00	0.00
4,348.0	18.10	220.62	4,187.6	-770.1	-655.6	-644.9	1.58	-1.57	-0.47
4,443.0	17.13	220.43	4,278.2	-791.9	-674.3	-663.2	1.02	-1.02	-0.20
4,538.0	18.69	218.69	4,368.6	-814.5	-692.9	-682.2	1.74	1.64	-1.83
4,634.0	19.89	219.32	4,459.2	-839.1	-712.8	-703.0	1.27	1.25	0.66
4,729.0	17.93	218.94	4,549.0	-863.0	-732.3	-723.1	2.07	-2.06	-0.40
4,825.0	19.45	217.87	4,640.0	-887.1	-751.4	-743.6	1.62	1.58	-1.11
4,920.0	18.50	217.29	4,729.8	-911.6	-770.2	-764.4	1.02	-1.00	-0.61

<b>Company:</b>	PDC Energy Inc. DJ Basin	<b>Local Co-ordinate Reference:</b>	Well Popham 6N (Nio B)
<b>Project:</b>	SEC.3-T4N-R64W	<b>TVD Reference:</b>	WELL @ 4685.0ft (Original Well Elev)
<b>Site:</b>	Popham 4N64W03 Pad Sec.3-T4N-R64W	<b>MD Reference:</b>	WELL @ 4685.0ft (Original Well Elev)
<b>Well:</b>	Popham 6N (Nio B)	<b>North Reference:</b>	True
<b>Wellbore:</b>	Popham 6N Wellbore #1	<b>Survey Calculation Method:</b>	Minimum Curvature
<b>Design:</b>	Popham 6N Wellbore #1	<b>Database:</b>	US_EDM

Survey									
Measured Depth (ft)	Inclination (°)	Azimuth (°)	Vertical Depth (ft)	+N/-S (ft)	+E/-W (ft)	Vertical Section (ft)	Dogleg Rate (°/100usft)	Build Rate (°/100usft)	Turn Rate (°/100usft)
5,015.0	17.67	217.20	4,820.1	-935.1	-788.0	-784.5	0.87	-0.87	-0.09
5,110.0	17.14	216.40	4,910.8	-957.8	-805.1	-803.9	0.61	-0.56	-0.84
5,206.0	16.54	214.81	5,002.6	-980.4	-821.3	-823.4	0.79	-0.63	-1.66
5,302.0	15.42	214.69	5,094.9	-1,002.1	-836.3	-842.2	1.17	-1.17	-0.13
5,397.0	13.59	216.42	5,186.9	-1,021.5	-850.1	-858.8	1.98	-1.93	1.82
5,493.0	10.92	216.38	5,280.7	-1,037.9	-862.2	-872.9	2.78	-2.78	-0.04
5,589.0	10.34	215.72	5,375.1	-1,052.2	-872.7	-885.2	0.62	-0.60	-0.69
5,685.0	7.94	221.78	5,469.8	-1,064.2	-882.1	-895.3	2.69	-2.50	6.31
5,780.0	5.45	225.36	5,564.2	-1,072.2	-889.7	-901.9	2.66	-2.62	3.77
5,876.0	2.28	184.86	5,660.0	-1,077.3	-893.1	-906.4	4.17	-3.30	-42.19
5,971.0	1.34	176.71	5,754.9	-1,080.3	-893.2	-909.3	1.02	-0.99	-8.58
6,067.0	1.29	172.53	5,850.9	-1,082.5	-893.0	-911.5	0.11	-0.05	-4.35
6,162.0	0.29	219.08	5,945.9	-1,083.8	-893.0	-912.7	1.17	-1.05	49.00
6,258.0	8.32	0.63	6,041.6	-1,077.0	-893.1	-906.1	8.91	8.36	147.45
6,354.0	13.75	7.68	6,135.7	-1,058.7	-891.5	-888.3	5.82	5.66	7.34
6,449.0	22.93	6.28	6,225.8	-1,029.1	-887.9	-859.8	9.67	9.66	-1.47
6,545.0	31.32	2.83	6,311.2	-985.5	-884.7	-817.4	8.89	8.74	-3.59
6,640.0	40.36	359.05	6,388.1	-929.9	-883.9	-762.8	9.79	9.52	-3.98
6,735.0	50.14	357.16	6,454.9	-862.6	-886.3	-696.1	10.39	10.29	-1.99
6,831.0	53.22	356.09	6,514.5	-787.4	-890.7	-621.3	3.33	3.21	-1.11
6,926.0	62.35	359.48	6,565.1	-707.2	-893.7	-541.8	10.07	9.61	3.57
7,003.1	68.38	0.34	6,597.2	-637.2	-893.8	-472.8	7.89	7.82	1.12
TPZ - 460' Setback - 460'FSL, 1319'FWL, Sec.3									
7,021.0	69.78	0.53	6,603.6	-620.4	-893.7	-456.3	7.89	7.82	1.06
7,117.0	76.15	0.39	6,631.7	-528.7	-892.9	-366.1	6.64	6.64	-0.15
7,211.0	80.66	1.10	6,650.6	-436.7	-891.7	-275.6	4.85	4.80	0.76
7,288.7	85.86	2.91	6,659.7	-359.6	-889.0	-200.2	7.08	6.70	2.33
LPL 737'FSL, 1331'FWL, Sec.3									
7,307.0	87.09	3.33	6,660.8	-341.3	-888.0	-182.4	7.08	6.70	2.30
7,403.0	89.11	4.18	6,664.0	-245.6	-881.8	-89.2	2.28	2.10	0.89
7,497.0	89.15	3.81	6,665.4	-151.8	-875.2	2.0	0.40	0.04	-0.39
7,592.0	89.95	3.67	6,666.2	-57.0	-869.0	94.3	0.85	0.84	-0.15
7,686.0	90.03	3.31	6,666.2	36.8	-863.3	185.7	0.39	0.09	-0.38
Deepest TVD Drilled - 6666.18' TVD									
7,781.0	90.30	2.79	6,665.9	131.6	-858.2	278.3	0.62	0.28	-0.55
7,876.0	90.29	2.92	6,665.4	226.5	-853.5	370.9	0.14	-0.01	0.14
7,971.0	90.41	1.79	6,664.8	321.4	-849.6	463.7	1.20	0.13	-1.19
8,066.0	91.08	0.43	6,663.6	416.4	-847.8	556.9	1.60	0.71	-1.43
8,161.0	91.50	1.26	6,661.5	511.4	-846.4	650.2	0.98	0.44	0.87
8,257.0	92.09	0.76	6,658.5	607.3	-844.7	744.4	0.81	0.61	-0.52
8,352.0	92.67	0.83	6,654.5	702.2	-843.3	837.7	0.61	0.61	0.07
8,447.0	91.50	0.13	6,651.1	797.2	-842.6	931.0	1.43	-1.23	-0.74
8,542.0	92.01	359.51	6,648.1	892.1	-842.9	1,024.6	0.84	0.54	-0.65
8,636.0	89.41	359.33	6,647.0	986.1	-843.8	1,117.3	2.77	-2.77	-0.19

<b>Company:</b>	PDC Energy Inc. DJ Basin	<b>Local Co-ordinate Reference:</b>	Well Popham 6N (Nio B)
<b>Project:</b>	SEC.3-T4N-R64W	<b>TVD Reference:</b>	WELL @ 4685.0ft (Original Well Elev)
<b>Site:</b>	Popham 4N64W03 Pad Sec.3-T4N-R64W	<b>MD Reference:</b>	WELL @ 4685.0ft (Original Well Elev)
<b>Well:</b>	Popham 6N (Nio B)	<b>North Reference:</b>	True
<b>Wellbore:</b>	Popham 6N Wellbore #1	<b>Survey Calculation Method:</b>	Minimum Curvature
<b>Design:</b>	Popham 6N Wellbore #1	<b>Database:</b>	US_EDM

Survey									
Measured Depth (ft)	Inclination (°)	Azimuth (°)	Vertical Depth (ft)	+N/-S (ft)	+E/-W (ft)	Vertical Section (ft)	Dogleg Rate (°/100usft)	Build Rate (°/100usft)	Turn Rate (°/100usft)
8,731.0	89.46	359.13	6,647.9	1,081.1	-845.1	1,211.1	0.22	0.05	-0.21
8,826.0	89.91	358.67	6,648.4	1,176.1	-846.9	1,305.0	0.68	0.47	-0.48
8,921.0	90.35	358.53	6,648.2	1,271.0	-849.2	1,398.9	0.49	0.46	-0.15
9,017.0	89.22	1.29	6,648.6	1,367.0	-849.4	1,493.5	3.11	-1.18	2.88
9,112.0	89.06	1.29	6,650.0	1,462.0	-847.2	1,586.6	0.17	-0.17	0.00
9,208.0	89.44	0.94	6,651.3	1,558.0	-845.4	1,680.8	0.54	0.40	-0.36
9,398.0	90.08	1.03	6,652.1	1,747.9	-842.1	1,867.3	0.34	0.34	0.05
9,494.0	90.12	1.21	6,651.9	1,843.9	-840.2	1,961.6	0.19	0.04	0.19
9,590.0	90.06	1.34	6,651.7	1,939.9	-838.1	2,055.7	0.15	-0.06	0.14
9,686.0	89.96	359.09	6,651.7	2,035.9	-837.7	2,150.2	2.35	-0.10	-2.34
9,781.0	90.07	0.48	6,651.7	2,130.9	-838.1	2,243.8	1.47	0.12	1.46
9,876.0	89.85	0.20	6,651.8	2,225.9	-837.5	2,337.3	0.37	-0.23	-0.29
9,972.0	90.27	0.77	6,651.7	2,321.9	-836.7	2,431.7	0.74	0.44	0.59
10,068.0	90.20	0.44	6,651.3	2,417.9	-835.7	2,526.1	0.35	-0.07	-0.34
10,164.0	90.13	0.35	6,651.0	2,513.9	-835.0	2,620.5	0.12	-0.07	-0.09
10,259.0	90.31	359.94	6,650.6	2,608.9	-834.8	2,714.0	0.47	0.19	-0.43
10,355.0	90.53	359.62	6,649.9	2,704.9	-835.2	2,808.6	0.40	0.23	-0.33
10,451.0	90.68	359.44	6,648.9	2,800.8	-835.9	2,903.3	0.24	0.16	-0.19
10,546.0	91.09	359.20	6,647.5	2,895.8	-837.1	2,997.0	0.50	0.43	-0.25
10,641.0	91.17	358.87	6,645.6	2,990.8	-838.7	3,090.8	0.36	0.08	-0.35
10,736.0	91.67	358.21	6,643.2	3,085.7	-841.1	3,184.8	0.87	0.53	-0.69
10,832.0	90.94	1.47	6,641.0	3,181.7	-841.4	3,279.3	3.48	-0.76	3.40
10,928.0	90.68	1.48	6,639.7	3,277.7	-838.9	3,373.4	0.27	-0.27	0.01
11,023.0	91.05	1.51	6,638.2	3,372.6	-836.4	3,466.5	0.39	0.39	0.03
11,119.0	91.54	0.86	6,636.1	3,468.6	-834.4	3,560.7	0.85	0.51	-0.68
11,214.0	90.43	2.68	6,634.4	3,563.5	-831.5	3,653.7	2.24	-1.17	1.92
11,310.0	91.04	2.03	6,633.2	3,659.4	-827.6	3,747.4	0.93	0.64	-0.68
11,406.0	90.67	0.91	6,631.8	3,755.4	-825.1	3,841.5	1.23	-0.39	-1.17
11,501.0	90.52	359.96	6,630.8	3,850.4	-824.4	3,934.9	1.01	-0.16	-1.00
11,597.0	90.83	359.93	6,629.7	3,946.3	-824.5	4,029.5	0.32	0.32	-0.03
11,692.0	91.50	359.51	6,627.7	4,041.3	-824.9	4,123.1	0.83	0.71	-0.44
11,787.0	92.18	359.04	6,624.7	4,136.3	-826.1	4,216.8	0.87	0.72	-0.49
11,882.0	89.37	0.36	6,623.4	4,231.2	-826.6	4,310.5	3.27	-2.96	1.39
11,977.0	90.36	359.76	6,623.6	4,326.2	-826.5	4,404.0	1.22	1.04	-0.63
12,129.0	91.58	358.85	6,621.0	4,478.2	-828.4	4,554.0	1.00	0.80	-0.60
12,189.0	91.58	358.85	6,619.4	4,538.2	-829.6	4,613.3	0.00	0.00	0.00
Projected BHL 371°FSL, 1145°FSL, Sec.34									

<b>Company:</b>	PDC Energy Inc. DJ Basin	<b>Local Co-ordinate Reference:</b>	Well Popham 6N (Nio B)
<b>Project:</b>	SEC.3-T4N-R64W	<b>TVD Reference:</b>	WELL @ 4685.0ft (Original Well Elev)
<b>Site:</b>	Popham 4N64W03 Pad Sec.3-T4N-R64W	<b>MD Reference:</b>	WELL @ 4685.0ft (Original Well Elev)
<b>Well:</b>	Popham 6N (Nio B)	<b>North Reference:</b>	True
<b>Wellbore:</b>	Popham 6N Wellbore #1	<b>Survey Calculation Method:</b>	Minimum Curvature
<b>Design:</b>	Popham 6N Wellbore #1	<b>Database:</b>	US_EDM

Design Targets									
Target Name	Dip Angle	Dip Dir.	TVD	+N/-S	+E/-W	Northing	Easting	Latitude	Longitude
- hit/miss target	(°)	(°)	(ft)	(ft)	(ft)	(usft)	(usft)		
- Shape									
SHL 1092'FSL, 2206'FW	0.00	0.00	1.0	0.0	0.0	1,367,108.39	3,268,156.89	40.337121	-104.538048
- survey hits target center									
- Point									
Projected BHL 371'FSL,	0.00	0.00	6,633.0	4,539.2	-798.1	1,371,638.49	3,267,309.59	40.349581	-104.540912
- survey misses target center by 34.3ft at 12189.0ft MD (6619.4 TVD, 4538.2 N, -829.6 E)									
- Point									

Survey Annotations					
Measured Depth	Vertical Depth	Local Coordinates			
(ft)	(ft)	+N/-S	+E/-W	Comment	
(ft)	(ft)	(ft)	(ft)		
7,003.1	6,597.2	-637.2	-893.8	TPZ - 460' Setback - 460'FSL, 1319'FWL, Sec.3	
7,686.0	6,666.2	36.8	-863.3	Deepest TVD Drilled - 6666.18' TVD	

Checked By: _____	Approved By: _____	Date: _____
-------------------	--------------------	-------------