



July 15, 2019

Mr. Jeff Robbins, Director  
Colorado Oil & Gas Conservation Commission  
1120 Lincoln Street, Ste. 801  
Denver, Colorado 80203

RE: Rule 318.A.e.

Wake North FED 33W-20-10, Wake North FED 33W-20-11, Wake North FED 33W-20-12 wells  
Surface location: NWSE Section 32, Township 6 North, Range 65 West, Weld County, CO  
Wake North FED 33W-20-13, Wake North FED 33W-20-14 wells  
Surface location: SWSE Section 32, Township 6 North, Range 65 West, Weld County, CO

Dear Mr. Robbins,

Extraction Oil and Gas, Inc. is planning to drill the captioned horizontal wells in accordance with the provision of COGCC Rule 318A.e.

The wellbore spacing unit will be 800 acres, comprised of Section 33: SWNW, NWSW, Section 32: S/2N/2, N/2S/2, Section 31: S/2N/2, N/2S/2 of Township 6 North, Range 65 West, 6<sup>th</sup> P.M. and Section 36: SENE, NESE of Township 6 North, Range 66 West, 6<sup>th</sup> P.M.

Extraction Oil and Gas, Inc. hereby certifies to the Director that all Owners within the proposed spacing unit above were notified and 30 days have passed. During the 30-day timeframe, there was one objection. This objection has since been resolved.

If you have any questions or issues regarding this matter, please contact Bonnie Lamond at (720) 354-4619.

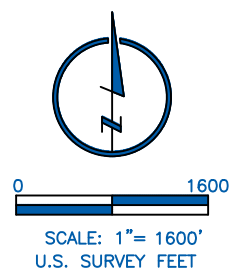
Sincerely,

A handwritten signature in blue ink, appearing to read "B. Lamond", is positioned below the "Sincerely," text.

Extraction Oil & Gas, Inc.

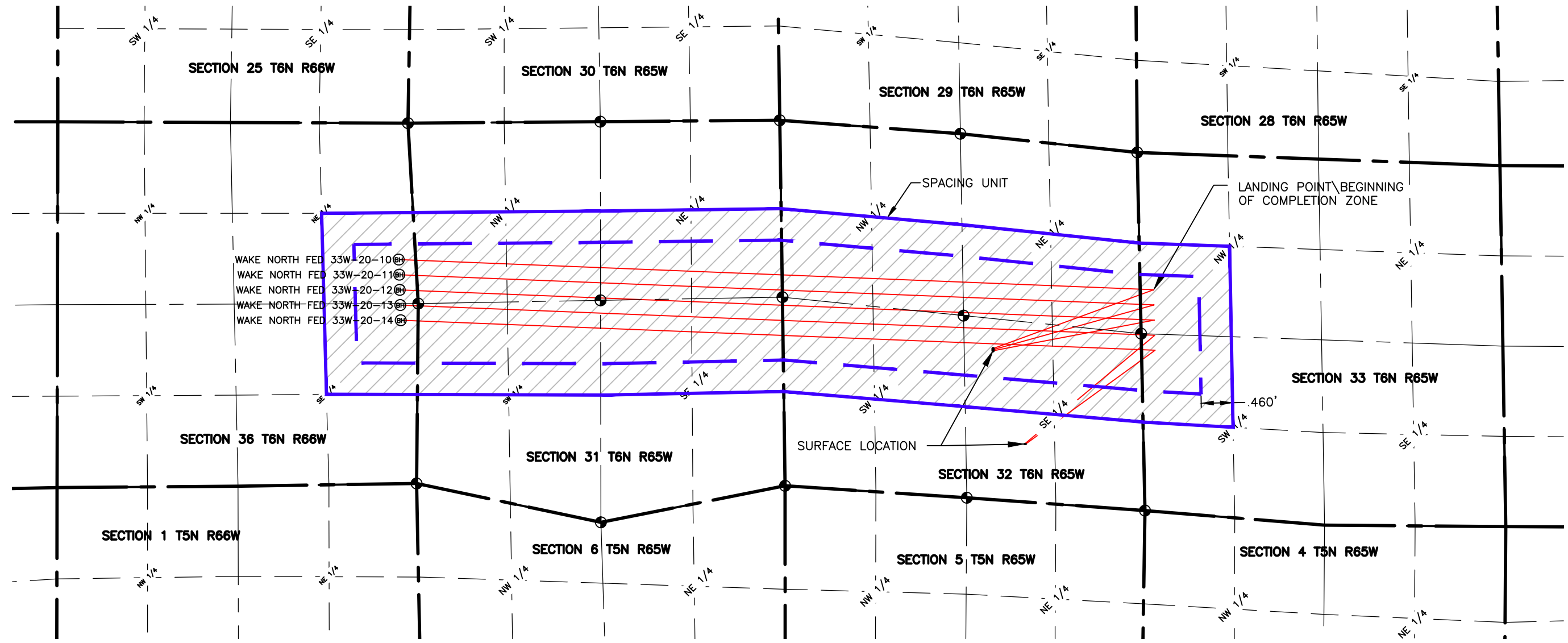
NAME: WAKE NORTH PSU 10-14  
 SE/4NE/4, NE/4SE/4 SEC 36 T6N R66W  
 S/2N/2, N/2S/2 SEC 31; S/2N/2, N/2S/2 SEC 32; SW/4NW/4, NW/4SW/4 SEC 33 T6N R65W

WELL NAME	SURFACE LOCATION				LANDING POINT/BEGIN HORIZONTAL COMPLETION ZONE				BOTTOM HOLE/END HORIZONTAL COMPLETION ZONE				COMPLETION ZONE BEARING	COMPLETION ZONE LENGTH
	DIST.	DIR.	DIST.	DIR.	DIST.	DIR.	DIST.	DIR.	DIST.	DIR.	DIST.	DIR.		
WAKE NORTH FED 33W-20-10	2208'	FSL	2175'	FEL	2001'	FNL	200'	FWL	2002'	FNL	200'	FEL	N87°42'59"W	11031.03'
WAKE NORTH FED 33W-20-11	2192'	FSL	2175'	FEL	2224'	FNL	200'	FWL	2225'	FNL	200'	FEL	N87°42'51"W	11023.15'
WAKE NORTH FED 33W-20-12	2176'	FSL	2176'	FEL	2446'	FNL	200'	FWL	2447'	FNL	200'	FEL	N87°42'43"W	11015.27'
WAKE NORTH FED 33W-20-13	846'	FSL	1744'	FEL	2574'	FSL	200'	FWL	2615'	FSL	200'	FEL	N87°42'35"W	11008.68'
WAKE NORTH FED 33W-20-14	847'	FSL	1726'	FEL	2356'	FSL	200'	FWL	2393'	FSL	200'	FEL	N87°43'39"W	11015.38'



**LEGEND**

- ⊕ ALIQUOT CORNER
- ⊙ BOTTOM HOLE
- SECTION LINE
- QUARTER SECTION LINE
- SIXTEENTH LINE



**LAMP RYNEARSON**

4715 Innovation Dr., Ste. 100  
 Fort Collins, CO 80525  
 970.226.0342  
 LampRynearson.com

DESIGNER / DRAFTER  
 DJC  
 ENGINEER  
 KJW  
 PROJECT NUMBER  
 0215045.01  
 DATE  
 02/25/19  
 SURFACE LOCATION  
 SE/4 SEC 32 T6N R65W  
 BOOK AND PAGE

# PROPOSED SPACING UNIT

## WAKE NORTH 10-14



L:\Engineering\0215045.01 Wake North 32-K\DRAWINGS\EXHIBITS\0215045.01 PSU CENTRAL.dwg, 2/28/2019 1:45:01 PM, DAVID CRAWFORD, LAMP RYNEARSON