



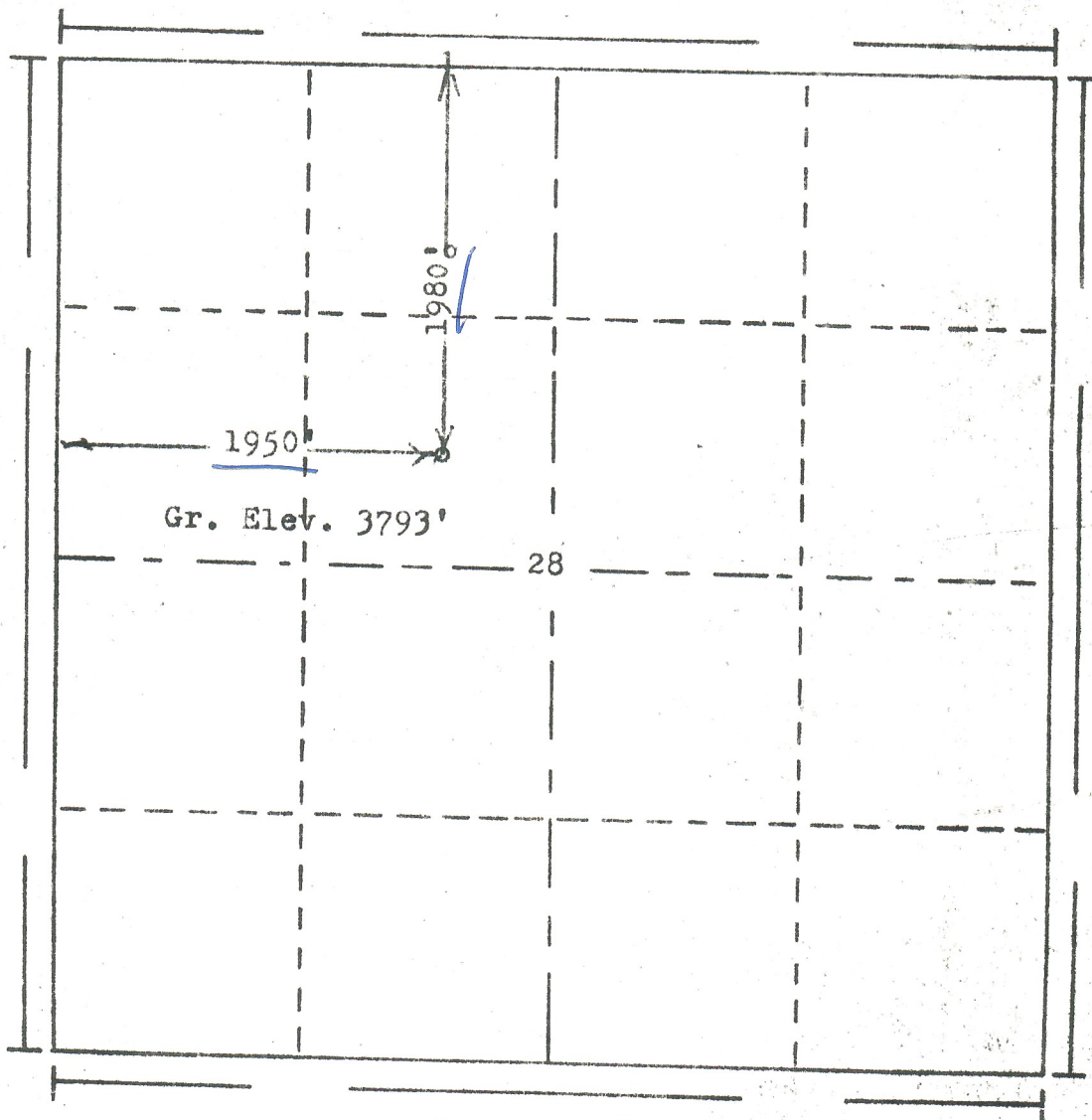
BEST IMAGE  
AVAILABLE

RECEIVED

JUL 11 1977

COLORADO OIL & GAS CONS. COM.

R. 45W



T.  
24  
S

Scale... 1" = 1000'

Powers Elevation Company, Inc. of Denver, Colorado  
has in accordance with a request from Mr. Daniels  
for ~~xx~~ Big Four Petroleum Company  
determined the location of No. 1-28 Hoffman  
to be CSE NW Section 28 Township 24S  
Range 45W of the 6th Principal Meridian  
Prowers County, Colorado

77 678

I hereby certify that this plat is an  
accurate representation of a correct  
survey showing the location of

Date: 6-29-77

Richard H. Hoffman  
Licensed Land Surveyor No. 2853  
Colorado