

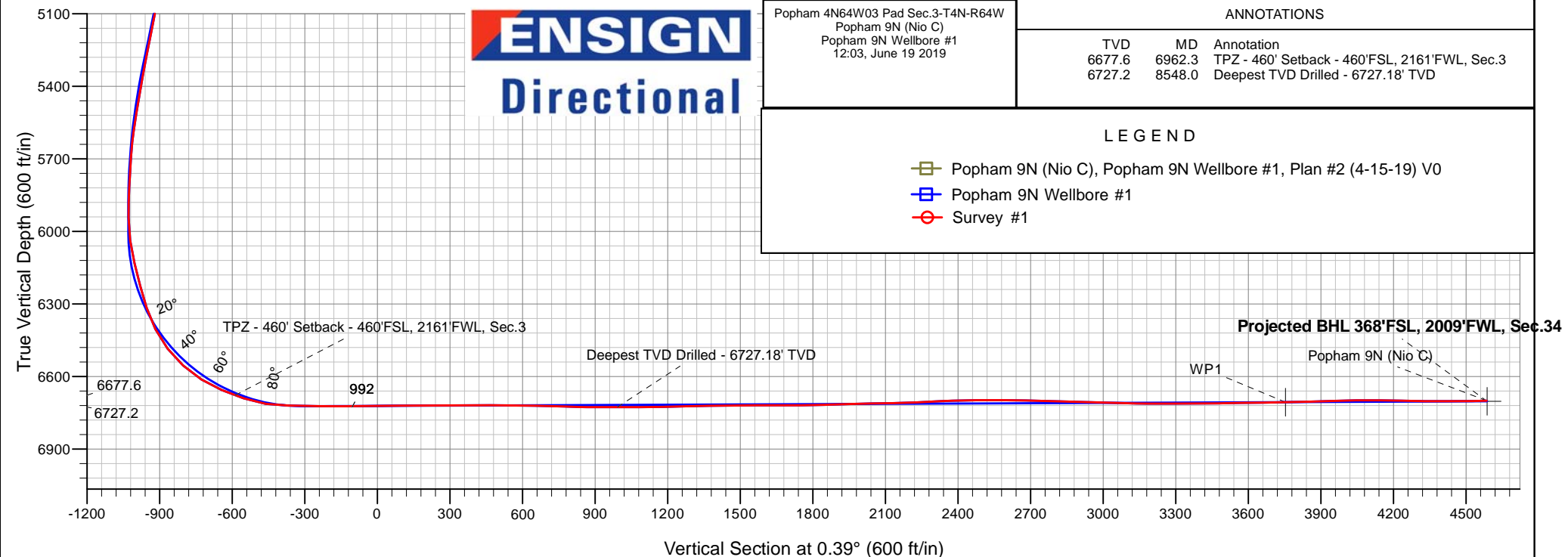
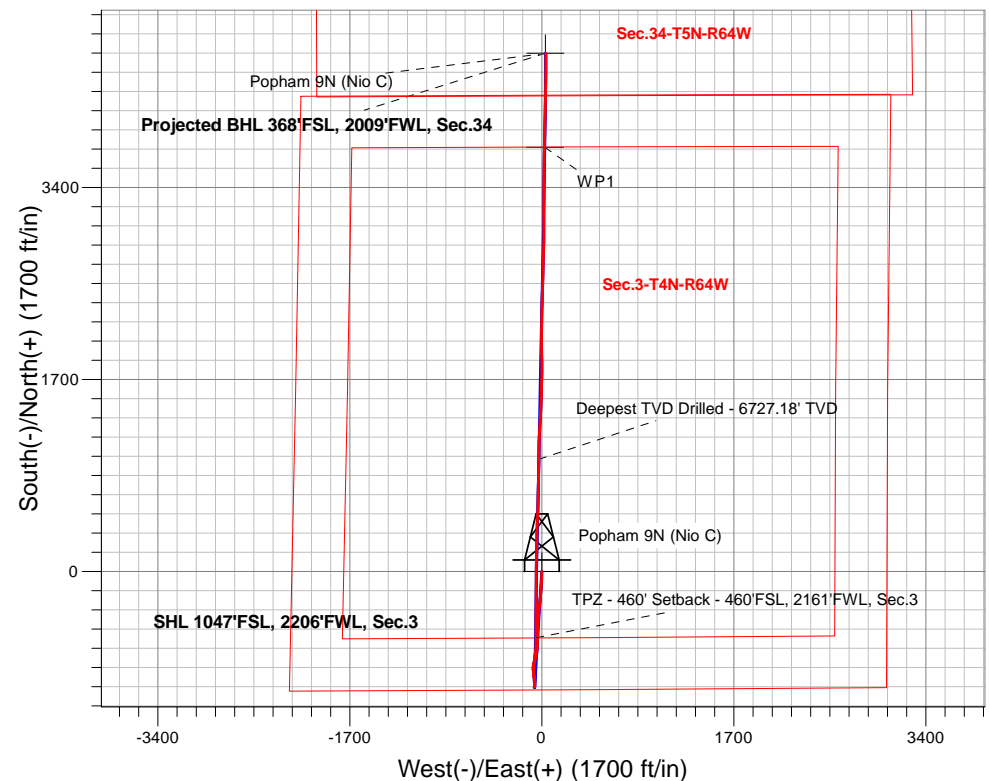
# PDC Energy Inc. DJ Basin

Well Name: **Popham 9N (Nio C)**

Surface Location: Popham 4N64W03 Pad Sec.3-T4N-R64W  
North American Datum 1983 , US State Plane 1983, Colorado Northern Zone  
Ground Elevation: 4661.0  
+N/-S +E/-W Northing Easting Latitude Longitude Slot  
0.0 0.0 1367063.39268156.81 40.336997 -104.538050  
Original Well Elev WELL @ 4684.0ft (Original Well Elev)

## FINAL SURVEY

**Projected Bottom Hole Location**  
**12,143'MD 6701'TVD 4586'N & 36'E of SHL**  
**91.01 degree Incl @ 359.61 degree AZM**





## **PDC Energy Inc. DJ Basin**

**SEC.3-T4N-R64W**

**Popham 4N64W03 Pad Sec.3-T4N-R64W**

**Popham 9N (Nio C)**

**Popham 9N Wellbore #1**

**Survey: Survey #1**

## **Standard Survey Report**

**19 June, 2019**

<b>Company:</b>	PDC Energy Inc. DJ Basin	<b>Local Co-ordinate Reference:</b>	Well Popham 9N (Nio C)
<b>Project:</b>	SEC.3-T4N-R64W	<b>TVD Reference:</b>	WELL @ 4684.0ft (Original Well Elev)
<b>Site:</b>	Popham 4N64W03 Pad Sec.3-T4N-R64W	<b>MD Reference:</b>	WELL @ 4684.0ft (Original Well Elev)
<b>Well:</b>	Popham 9N (Nio C)	<b>North Reference:</b>	True
<b>Wellbore:</b>	Popham 9N Wellbore #1	<b>Survey Calculation Method:</b>	Minimum Curvature
<b>Design:</b>	Popham 9N Wellbore #1	<b>Database:</b>	US_EDM

<b>Project</b>	SEC.3-T4N-R64W, Weld County, CO		
<b>Map System:</b>	US State Plane 1983	<b>System Datum:</b>	Mean Sea Level
<b>Geo Datum:</b>	North American Datum 1983		Using Well Reference Point
<b>Map Zone:</b>	Colorado Northern Zone		Using geodetic scale factor

Site	Popham 4N64W03 Pad Sec.3-T4N-R64W				
Site Position:		Northing:	1,367,183.37 usft	Latitude:	40.337327
From:	Lat/Long	Easting:	3,268,156.99 usft	Longitude:	-104.538045
Position Uncertainty:	0.0 ft	Slot Radius:	13-3/16 "	Grid Convergence:	0.62 °

Well	Popham 9N (Nio C)					
Well Position	+N/-S	0.0 ft	Northing:	1,367,063.39 usft	Latitude:	40.336997
	+E/-W	0.0 ft	Easting:	3,268,156.82 usft	Longitude:	-104.538050
Position Uncertainty		0.0 ft	Wellhead Elevation:	0.0 ft	Ground Level:	4,661.0 ft

<b>Wellbore</b>	Popham 9N Wellbore #1				
<b>Magnetics</b>	<b>Model Name</b>	<b>Sample Date</b>	<b>Declination (°)</b>	<b>Dip Angle (°)</b>	<b>Field Strength (nT)</b>
	HDGM	4/15/2019	8.13	66.85	52,161

<b>Design</b>	Popham 9N Wellbore #1				
<b>Audit Notes:</b>					
<b>Version:</b>	1.0	<b>Phase:</b>	ACTUAL	<b>Tie On Depth:</b>	0.0
<b>Vertical Section:</b>	<b>Depth From (TVD) (ft)</b>	<b>+N/-S (ft)</b>	<b>+E/-W (ft)</b>	<b>Direction (°)</b>	
	0.0	0.0	0.0	0.39	

<b>Survey Program</b>	<b>Date</b>	6/19/2019			
<b>From (ft)</b>	<b>To (ft)</b>	<b>Survey (Wellbore)</b>	<b>Tool Name</b>	<b>Description</b>	
156.0	12,143.0	Survey #1 (Popham 9N Wellbore #1)	MWD	MWD - Standard	

<b>Survey</b>									
<b>Measured Depth (ft)</b>	<b>Inclination (°)</b>	<b>Azimuth (°)</b>	<b>Vertical Depth (ft)</b>	<b>+N/-S (ft)</b>	<b>+E/-W (ft)</b>	<b>Vertical Section (ft)</b>	<b>Dogleg Rate (°/100usft)</b>	<b>Build Rate (°/100usft)</b>	<b>Turn Rate (°/100usft)</b>
0.0	0.00	0.00	0.0	0.0	0.0	0.0	0.00	0.00	0.00
1.0	0.00	77.77	1.0	0.0	0.0	0.0	0.21	0.21	0.00
<b>SHL 1047'FSL, 2206'FWL, Sec.3</b>									
156.0	0.33	77.77	156.0	0.1	0.4	0.1	0.21	0.21	0.00
251.0	0.41	115.20	251.0	0.0	1.0	0.0	0.26	0.08	39.40
346.0	1.56	188.31	346.0	-1.4	1.1	-1.4	1.57	1.21	76.96
440.0	3.19	189.77	439.9	-5.3	0.5	-5.3	1.74	1.73	1.55
535.0	4.95	183.71	534.7	-12.0	-0.2	-12.0	1.90	1.85	-6.38
630.0	6.88	183.86	629.1	-21.7	-0.9	-21.7	2.03	2.03	0.16
724.0	8.88	182.72	722.3	-34.6	-1.6	-34.6	2.13	2.13	-1.21
819.0	10.04	182.55	816.0	-50.2	-2.3	-50.2	1.22	1.22	-0.18

<b>Company:</b>	PDC Energy Inc. DJ Basin	<b>Local Co-ordinate Reference:</b>	Well Popham 9N (Nio C)
<b>Project:</b>	SEC.3-T4N-R64W	<b>TVD Reference:</b>	WELL @ 4684.0ft (Original Well Elev)
<b>Site:</b>	Popham 4N64W03 Pad Sec.3-T4N-R64W	<b>MD Reference:</b>	WELL @ 4684.0ft (Original Well Elev)
<b>Well:</b>	Popham 9N (Nio C)	<b>North Reference:</b>	True
<b>Wellbore:</b>	Popham 9N Wellbore #1	<b>Survey Calculation Method:</b>	Minimum Curvature
<b>Design:</b>	Popham 9N Wellbore #1	<b>Database:</b>	US_EDM

Survey									
Measured Depth (ft)	Inclination (°)	Azimuth (°)	Vertical Depth (ft)	+N/-S (ft)	+E/-W (ft)	Vertical Section (ft)	Dogleg Rate (°/100usft)	Build Rate (°/100usft)	Turn Rate (°/100usft)
913.0	11.11	180.40	908.4	-67.4	-2.7	-67.4	1.21	1.14	-2.29
1,008.0	10.71	182.09	1,001.6	-85.4	-3.1	-85.4	0.54	-0.42	1.78
1,103.0	11.20	182.47	1,094.9	-103.4	-3.8	-103.5	0.52	0.52	0.40
1,198.0	11.71	182.60	1,188.0	-122.3	-4.7	-122.3	0.54	0.54	0.14
1,293.0	12.93	184.31	1,280.8	-142.5	-5.9	-142.6	1.34	1.28	1.80
1,388.0	12.51	184.17	1,373.5	-163.4	-7.4	-163.4	0.44	-0.44	-0.15
1,482.0	11.35	181.80	1,465.5	-182.8	-8.5	-182.8	1.34	-1.23	-2.52
1,626.0	10.18	182.40	1,606.9	-209.7	-9.5	-209.7	0.82	-0.81	0.42
1,764.0	12.12	190.76	1,742.3	-236.1	-12.7	-236.2	1.83	1.41	6.06
1,859.0	12.06	188.17	1,835.2	-255.7	-15.9	-255.8	0.57	-0.06	-2.73
1,953.0	11.43	185.69	1,927.3	-274.7	-18.3	-274.8	0.86	-0.67	-2.64
2,047.0	11.08	184.05	2,019.4	-293.0	-19.8	-293.1	0.50	-0.37	-1.74
2,143.0	13.73	188.61	2,113.2	-313.4	-22.2	-313.6	2.94	2.76	4.75
2,238.0	12.73	186.59	2,205.7	-335.0	-25.1	-335.1	1.16	-1.05	-2.13
2,333.0	11.64	183.85	2,298.5	-354.9	-26.9	-355.1	1.30	-1.15	-2.88
2,428.0	10.72	181.04	2,391.7	-373.3	-27.7	-373.5	1.13	-0.97	-2.96
2,523.0	12.67	184.97	2,484.8	-392.6	-28.8	-392.7	2.22	2.05	4.14
2,618.0	12.38	184.85	2,577.5	-413.1	-30.5	-413.3	0.31	-0.31	-0.13
2,712.0	12.12	184.82	2,669.4	-433.0	-32.2	-433.2	0.28	-0.28	-0.03
2,807.0	12.07	185.50	2,762.3	-452.8	-34.0	-453.0	0.16	-0.05	0.72
2,901.0	10.99	183.11	2,854.4	-471.5	-35.4	-471.7	1.26	-1.15	-2.54
2,995.0	10.75	183.11	2,946.7	-489.2	-36.4	-489.4	0.26	-0.26	0.00
3,089.0	9.82	180.36	3,039.2	-506.0	-36.9	-506.2	1.12	-0.99	-2.93
3,184.0	10.17	182.18	3,132.7	-522.5	-37.3	-522.7	0.50	0.37	1.92
3,279.0	9.22	180.89	3,226.4	-538.5	-37.7	-538.7	1.03	-1.00	-1.36
3,373.0	10.08	179.86	3,319.0	-554.2	-37.8	-554.5	0.93	0.91	-1.10
3,468.0	11.02	178.26	3,412.4	-571.6	-37.5	-571.8	1.04	0.99	-1.68
3,563.0	12.33	181.14	3,505.5	-590.8	-37.5	-591.1	1.51	1.38	3.03
3,659.0	11.33	177.67	3,599.4	-610.5	-37.3	-610.7	1.28	-1.04	-3.61
3,753.0	12.72	184.44	3,691.4	-630.0	-37.7	-630.3	2.10	1.48	7.20
3,848.0	12.71	183.91	3,784.0	-650.9	-39.2	-651.1	0.12	-0.01	-0.56
3,944.0	12.33	183.31	3,877.7	-671.7	-40.5	-671.9	0.42	-0.40	-0.63
4,039.0	10.87	182.27	3,970.8	-690.7	-41.5	-691.0	1.55	-1.54	-1.09
4,134.0	13.18	188.86	4,063.7	-710.4	-43.5	-710.7	2.82	2.43	6.94
4,229.0	12.45	190.29	4,156.3	-731.2	-47.0	-731.5	0.84	-0.77	1.51
4,325.0	11.83	192.25	4,250.2	-751.0	-50.9	-751.3	0.78	-0.65	2.04
4,420.0	10.86	193.83	4,343.3	-769.2	-55.2	-769.5	1.07	-1.02	1.66
4,515.0	10.26	195.68	4,436.7	-786.0	-59.6	-786.4	0.73	-0.63	1.95
4,611.0	9.26	199.81	4,531.3	-801.5	-64.5	-801.9	1.27	-1.04	4.30
4,706.0	11.30	199.27	4,624.8	-817.5	-70.2	-817.9	2.15	2.15	-0.57
4,802.0	11.91	190.31	4,718.9	-836.1	-75.0	-836.6	1.98	0.64	-9.33
4,897.0	11.53	179.73	4,811.9	-855.3	-76.8	-855.8	2.29	-0.40	-11.14
4,992.0	13.80	173.12	4,904.6	-876.0	-75.4	-876.5	2.83	2.39	-6.96

<b>Company:</b>	PDC Energy Inc. DJ Basin	<b>Local Co-ordinate Reference:</b>	Well Popham 9N (Nio C)
<b>Project:</b>	SEC.3-T4N-R64W	<b>TVD Reference:</b>	WELL @ 4684.0ft (Original Well Elev)
<b>Site:</b>	Popham 4N64W03 Pad Sec.3-T4N-R64W	<b>MD Reference:</b>	WELL @ 4684.0ft (Original Well Elev)
<b>Well:</b>	Popham 9N (Nio C)	<b>North Reference:</b>	True
<b>Wellbore:</b>	Popham 9N Wellbore #1	<b>Survey Calculation Method:</b>	Minimum Curvature
<b>Design:</b>	Popham 9N Wellbore #1	<b>Database:</b>	US_EDM

Survey									
Measured Depth (ft)	Inclination (°)	Azimuth (°)	Vertical Depth (ft)	+N/-S (ft)	+E/-W (ft)	Vertical Section (ft)	Dogleg Rate (°/100usft)	Build Rate (°/100usft)	Turn Rate (°/100usft)
5,087.0	13.03	170.46	4,997.0	-897.8	-72.2	-898.3	1.04	-0.81	-2.80
5,183.0	11.37	167.90	5,090.8	-917.7	-68.4	-918.2	1.82	-1.73	-2.67
5,279.0	11.12	172.34	5,185.0	-936.2	-65.2	-936.6	0.94	-0.26	4.63
5,374.0	11.19	178.67	5,278.2	-954.5	-63.8	-954.9	1.29	0.07	6.66
5,470.0	9.72	180.38	5,372.6	-971.9	-63.6	-972.3	1.56	-1.53	1.78
5,566.0	9.81	182.49	5,467.2	-988.2	-64.0	-988.6	0.38	0.09	2.20
5,662.0	8.44	178.46	5,562.0	-1,003.4	-64.2	-1,003.8	1.57	-1.43	-4.20
5,757.0	5.38	185.74	5,656.3	-1,014.8	-64.5	-1,015.2	3.34	-3.22	7.66
5,853.0	2.87	193.16	5,752.0	-1,021.6	-65.5	-1,022.0	2.67	-2.61	7.73
5,948.0	2.40	190.57	5,846.9	-1,025.9	-66.4	-1,026.3	0.51	-0.49	-2.73
6,044.0	0.55	25.05	5,942.9	-1,027.4	-66.5	-1,027.9	3.06	-1.93	-172.42
6,139.0	7.25	6.37	6,037.6	-1,021.0	-65.7	-1,021.5	7.09	7.05	-19.66
6,235.0	14.28	1.30	6,131.9	-1,003.2	-64.7	-1,003.6	7.38	7.32	-5.28
6,331.0	13.77	357.49	6,225.0	-979.9	-65.0	-980.3	1.10	-0.53	-3.97
6,426.0	18.86	350.11	6,316.2	-953.5	-68.1	-953.9	5.78	5.36	-7.77
6,522.0	26.63	355.01	6,404.6	-916.7	-72.6	-917.2	8.32	8.09	5.10
6,617.0	37.97	1.95	6,484.8	-866.1	-73.5	-866.6	12.54	11.94	7.31
6,712.0	47.49	8.26	6,554.6	-802.1	-67.5	-802.5	10.98	10.02	6.64
6,808.0	57.98	7.30	6,612.6	-726.5	-57.2	-726.8	10.96	10.93	-1.00
6,903.0	67.80	1.02	6,655.9	-642.3	-51.3	-642.6	11.89	10.34	-6.61
6,962.3	69.22	0.12	6,677.6	-587.1	-50.7	-587.4	2.78	2.39	-1.52
TPZ - 460' Setback - 460'FSL, 2161'FWL, Sec.3									
6,999.0	70.10	359.57	6,690.4	-552.7	-50.8	-553.0	2.78	2.40	-1.50
7,094.0	82.14	359.29	6,713.1	-460.6	-51.7	-461.0	12.68	12.67	-0.29
7,188.0	88.97	0.89	6,720.4	-367.0	-51.6	-367.3	7.46	7.27	1.70
7,244.9	88.98	0.59	6,721.4	-310.1	-50.8	-310.4	0.53	0.02	-0.53
LPL 737'FSL, 2160'FWL, Sec.3									
7,314.0	88.99	0.22	6,722.6	-241.0	-50.4	-241.3	0.53	0.02	-0.53
7,409.0	90.20	1.01	6,723.3	-146.0	-49.3	-146.3	1.52	1.27	0.83
7,504.0	90.70	0.05	6,722.6	-51.0	-48.5	-51.3	1.14	0.53	-1.01
7,598.0	90.73	359.32	6,721.4	43.0	-49.0	42.6	0.78	0.03	-0.78
7,693.0	90.53	2.25	6,720.4	137.9	-47.7	137.6	3.09	-0.21	3.08
7,788.0	90.30	1.12	6,719.7	232.9	-44.9	232.6	1.21	-0.24	-1.19
7,883.0	90.32	0.63	6,719.2	327.9	-43.4	327.6	0.52	0.02	-0.52
7,978.0	89.94	2.56	6,718.9	422.8	-40.8	422.6	2.07	-0.40	2.03
8,072.0	89.64	1.97	6,719.3	516.8	-37.1	516.5	0.70	-0.32	-0.63
8,168.0	89.15	1.61	6,720.3	612.7	-34.1	612.5	0.63	-0.51	-0.38
8,263.0	88.56	0.97	6,722.2	707.7	-31.9	707.4	0.92	-0.62	-0.67
8,359.0	87.85	0.41	6,725.2	803.6	-30.8	803.4	0.94	-0.74	-0.58
8,453.0	89.99	1.79	6,727.0	897.6	-29.0	897.4	2.71	2.28	1.47
8,548.0	89.76	0.78	6,727.2	992.6	-26.8	992.3	1.09	-0.24	-1.06
Deepest TVD Drilled - 6727.18' TVD									
8,643.0	90.34	0.93	6,727.1	1,087.5	-25.4	1,087.3	0.63	0.61	0.16
8,738.0	91.34	2.78	6,725.7	1,182.5	-22.4	1,182.3	2.21	1.05	1.95

<b>Company:</b>	PDC Energy Inc. DJ Basin	<b>Local Co-ordinate Reference:</b>	Well Popham 9N (Nio C)
<b>Project:</b>	SEC.3-T4N-R64W	<b>TVD Reference:</b>	WELL @ 4684.0ft (Original Well Elev)
<b>Site:</b>	Popham 4N64W03 Pad Sec.3-T4N-R64W	<b>MD Reference:</b>	WELL @ 4684.0ft (Original Well Elev)
<b>Well:</b>	Popham 9N (Nio C)	<b>North Reference:</b>	True
<b>Wellbore:</b>	Popham 9N Wellbore #1	<b>Survey Calculation Method:</b>	Minimum Curvature
<b>Design:</b>	Popham 9N Wellbore #1	<b>Database:</b>	US_EDM

Survey										
Measured Depth (ft)	Inclination (°)	Azimuth (°)	Vertical Depth (ft)	+N/-S (ft)	+E/-W (ft)	Vertical Section (ft)	Dogleg Rate (°/100usft)	Build Rate (°/100usft)	Turn Rate (°/100usft)	
8,832.0	91.50	3.36	6,723.4	1,276.3	-17.3	1,276.2	0.64	0.17	0.62	
8,927.0	90.99	2.55	6,721.3	1,371.2	-12.4	1,371.0	1.01	-0.54	-0.85	
9,023.0	90.53	2.29	6,720.0	1,467.1	-8.4	1,467.0	0.55	-0.48	-0.27	
9,119.0	90.35	2.00	6,719.3	1,563.0	-4.8	1,562.9	0.36	-0.19	-0.30	
9,214.0	90.07	1.41	6,719.0	1,658.0	-2.0	1,657.9	0.69	-0.29	-0.62	
9,309.0	89.94	1.28	6,718.9	1,752.9	0.3	1,752.9	0.19	-0.14	-0.14	
9,405.0	91.99	0.02	6,717.3	1,848.9	1.4	1,848.9	2.51	2.14	-1.31	
9,500.0	91.48	359.48	6,714.5	1,943.9	1.0	1,943.8	0.78	-0.54	-0.57	
9,596.0	91.22	359.14	6,712.2	2,039.8	-0.2	2,039.8	0.45	-0.27	-0.35	
9,692.0	91.17	358.89	6,710.2	2,135.8	-1.9	2,135.7	0.27	-0.05	-0.26	
9,787.0	92.36	0.22	6,707.3	2,230.7	-2.6	2,230.7	1.88	1.25	1.40	
9,883.0	93.27	1.75	6,702.5	2,326.6	-0.9	2,326.5	1.85	0.95	1.59	
9,978.0	90.29	2.43	6,699.6	2,421.5	2.5	2,421.4	3.22	-3.14	0.72	
10,074.0	90.45	1.82	6,699.0	2,517.4	6.1	2,517.4	0.66	0.17	-0.64	
10,170.0	90.46	1.97	6,698.2	2,613.4	9.3	2,613.4	0.16	0.01	0.16	
10,265.0	87.86	1.98	6,699.6	2,708.3	12.5	2,708.3	2.74	-2.74	0.01	
10,361.0	88.37	1.65	6,702.8	2,804.2	15.6	2,804.2	0.63	0.53	-0.34	
10,457.0	88.58	0.82	6,705.3	2,900.1	17.6	2,900.2	0.89	0.22	-0.86	
10,552.0	88.35	0.02	6,707.9	2,995.1	18.3	2,995.1	0.88	-0.24	-0.84	
10,648.0	88.26	358.83	6,710.7	3,091.0	17.4	3,091.1	1.24	-0.09	-1.24	
10,743.0	89.65	0.05	6,712.4	3,186.0	16.4	3,186.1	1.95	1.46	1.28	
10,838.0	90.37	1.03	6,712.4	3,281.0	17.3	3,281.1	1.28	0.76	1.03	
10,934.0	90.31	0.34	6,711.9	3,377.0	18.5	3,377.0	0.72	-0.06	-0.72	
11,029.0	90.50	359.57	6,711.2	3,472.0	18.4	3,472.0	0.83	0.20	-0.81	
11,125.0	91.21	0.86	6,709.7	3,568.0	18.8	3,568.0	1.53	0.74	1.34	
11,221.0	90.73	1.99	6,708.1	3,663.9	21.2	3,664.0	1.28	-0.50	1.18	
11,311.3	91.31	1.68	6,706.5	3,754.1	24.0	3,754.2	0.73	0.64	-0.35	
WP1										
11,316.0	91.34	1.66	6,706.4	3,758.9	24.2	3,759.0	0.73	0.64	-0.35	
11,412.0	91.59	0.77	6,704.0	3,854.8	26.2	3,854.9	0.96	0.26	-0.93	
11,507.0	92.08	0.23	6,700.9	3,949.8	27.0	3,949.9	0.77	0.52	-0.57	
11,603.0	90.69	1.54	6,698.6	4,045.7	28.5	4,045.8	1.99	-1.45	1.36	
11,698.0	89.09	1.95	6,698.8	4,140.7	31.4	4,140.8	1.74	-1.68	0.43	
11,793.0	88.84	1.09	6,700.5	4,235.6	33.9	4,235.8	0.94	-0.26	-0.91	
11,888.0	89.31	0.67	6,702.0	4,330.6	35.4	4,330.7	0.66	0.49	-0.44	
11,984.0	90.01	0.20	6,702.6	4,426.6	36.1	4,426.7	0.88	0.73	-0.49	
12,083.0	91.01	359.61	6,701.7	4,525.6	36.0	4,525.7	1.17	1.01	-0.60	
12,143.0	91.01	359.61	6,700.7	4,585.6	35.6	4,585.7	0.00	0.00	0.00	
Projected BHL 368'FSL, 2009'FWL, Sec.34										

<b>Company:</b>	PDC Energy Inc. DJ Basin	<b>Local Co-ordinate Reference:</b>	Well Popham 9N (Nio C)
<b>Project:</b>	SEC.3-T4N-R64W	<b>TVD Reference:</b>	WELL @ 4684.0ft (Original Well Elev)
<b>Site:</b>	Popham 4N64W03 Pad Sec.3-T4N-R64W	<b>MD Reference:</b>	WELL @ 4684.0ft (Original Well Elev)
<b>Well:</b>	Popham 9N (Nio C)	<b>North Reference:</b>	True
<b>Wellbore:</b>	Popham 9N Wellbore #1	<b>Survey Calculation Method:</b>	Minimum Curvature
<b>Design:</b>	Popham 9N Wellbore #1	<b>Database:</b>	US_EDM

Design Targets									
Target Name - hit/miss target - Shape	Dip Angle (°)	Dip Dir. (°)	TVD (ft)	+N/-S (ft)	+E/-W (ft)	Northing (usft)	Easting (usft)	Latitude	Longitude
SHL 1047'FSL, 2206'FW - survey hits target center - Point	0.00	0.00	1.0	0.0	0.0	1,367,063.40	3,268,156.82	40.336997	-104.538050
Projected BHL 368'FSL, - survey misses target center by 5.2ft at 12143.0ft MD (6700.7 TVD, 4585.6 N, 35.6 E) - Point	0.00	0.00	6,703.0	4,587.3	31.2	1,371,650.57	3,268,138.27	40.349589	-104.537938
WP1 - survey misses target center by 4.0ft at 11311.3ft MD (6706.5 TVD, 3754.1 N, 24.0 E) - Point	0.00	0.00	6,706.4	3,754.0	28.0	1,370,817.31	3,268,144.09	40.347302	-104.537950

Survey Annotations					
Measured Depth (ft)	Vertical Depth (ft)	Local Coordinates			
		+N/-S (ft)	+E/-W (ft)	Comment	
6,962.3	6,677.6	-587.1	-50.7	TPZ - 460' Setback - 460'FSL, 2161'FWL, Sec.3	
8,548.0	6,727.2	992.6	-26.8	Deepest TVD Drilled - 6727.18' TVD	

Checked By: \_\_\_\_\_ Approved By: \_\_\_\_\_ Date: \_\_\_\_\_