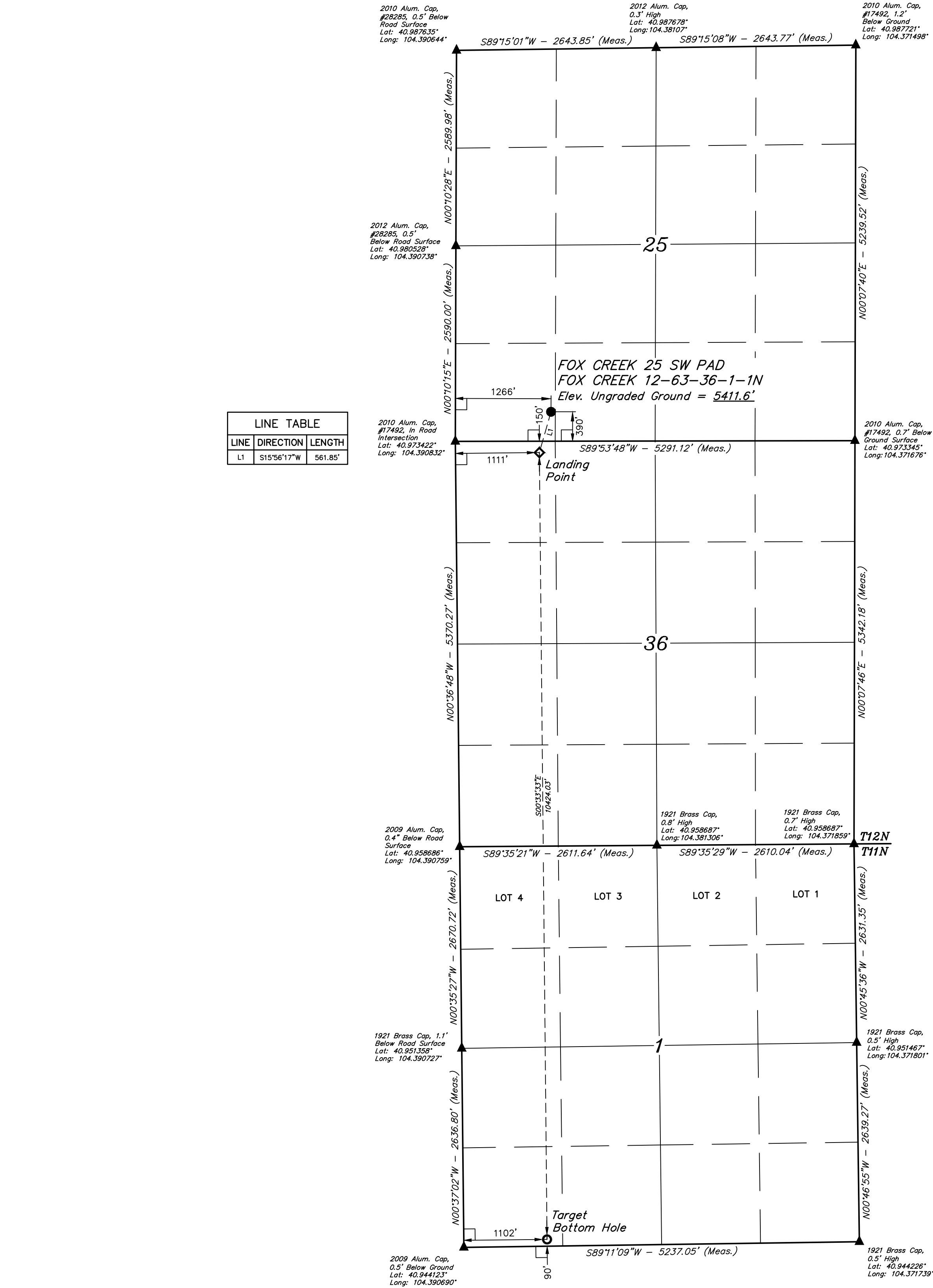


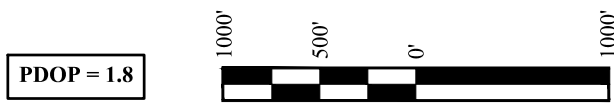
LEGEND:

- = 90° SYMBOL
● = PROPOSED WELLHEAD.
◇ = LANDING POINT.
○ = TARGET BOTTOM HOLE.
▲ = SECTION CORNERS LOCATED. (NAD 83)

T12N, R63W, 6th P.M.



LINE TABLE		
LINE	DIRECTION	LENGTH
L1	S15°56'17"W	561.85'



NAD 83 (SURFACE LOCATION)	NAD 83 (LANDING POINT)	NAD 83 (TARGET BOTTOM HOLE)
LATITUDE = 40°58'28.11" (40.974474°)	LATITUDE = 40°58'22.78" (40.972994°)	LATITUDE = 40°56'39.81" (40.944392°)
LONGITUDE = 104°23'10.45" (104.386235°)	LONGITUDE = 104°23'12.51" (104.386807°)	LONGITUDE = 104°23'12.13" (104.386704°)
NAD 27 (SURFACE LOCATION)	NAD 27 (LANDING POINT)	NAD 27 (TARGET BOTTOM HOLE)
LATITUDE = 40°58'28.17" (40.974491°)	LATITUDE = 40°58'22.84" (40.973011°)	LATITUDE = 40°56'39.87" (40.944409°)
LONGITUDE = 104°23'08.60" (104.385723°)	LONGITUDE = 104°23'10.66" (104.386296°)	LONGITUDE = 104°23'10.29" (104.386193°)
STATE PLANE NAD 83 (CO. NORTH)	STATE PLANE NAD 83 (CO. NORTH)	STATE PLANE NAD 83 (CO. NORTH)
N: 1599787.59' E: 3307558.21'	N: 1599246.61' E: 3307406.95'	N: 1588826.18' E: 3307566.35'
STATE PLANE NAD 27 (CO. NORTH)	STATE PLANE NAD 27 (CO. NORTH)	STATE PLANE NAD 27 (CO. NORTH)
N: 599785.16' E: 2307707.68'	N: 599244.20' E: 2307556.42'	N: 588823.97' E: 2307715.76'

BASIS OF BEARINGS
TRANSVERSE MERCATOR PROJECTION WITH
A CENTRAL MERIDIAN OF W105°00'00".

BASIS OF ELEVATION
OPUS SOLUTION GENERATED NAVD 88



UELS, LLC
Corporate Office * 85 South 200 East
Vernal, UT 84078 * (435) 789-1017



CERTIFICATE OF RECORDING
THIS IS TO CERTIFY THAT THE ABOVE DESCRIBED WORK WAS DONE BY THE SURVEYOR AND THAT THE SAME ARE TRUE AND CORRECT TO THE BEST OF HIS KNOWLEDGE AND BELIEF.

REGISTERED LAND SURVEYOR
REGISTRATION NO. 28285
STATE OF COLORADO
JANUARY 18, 2018

HIGHPOINT OPERATING CORPORATION
FOX CREEK 25 SW PAD
FOX CREEK 12-63-36-1-1N
SW 1/4 SW 1/4, SECTION 25, T12N, R63W, 6th P.M.
WELD COUNTY, COLORADO

SURVEYED BY	RYAN WILLIAMS	08-16-18	SCALE
DRAWN BY	A.P.	08-23-18	1" = 1000'

WELL LOCATION PLAT