



PROJECT DETAILS: Weld County, CO NAD 83

Geodetic System: US State Plane 1983
Datum: North American Datum 1983
Ellipsoid: GRS 1980
Zone: Colorado Northern Zone
System Datum: Mean Sea Level
Local North: True

Project: Weld County, CO NAD 83
Site: Fox Creek 25 SW Pad
Well: Fox Creek 36-0263B
Wellbore: OH
Design: Plan 1



Azimuths to True North
Magnetic North: 8.28°

Magnetic Field
Strength: 52808.0snT
Dip Angle: 67.28°
Date: 10/17/2018
Model: HDGM



Plan: Plan 1 (Fox Creek 36-0263B/OH)

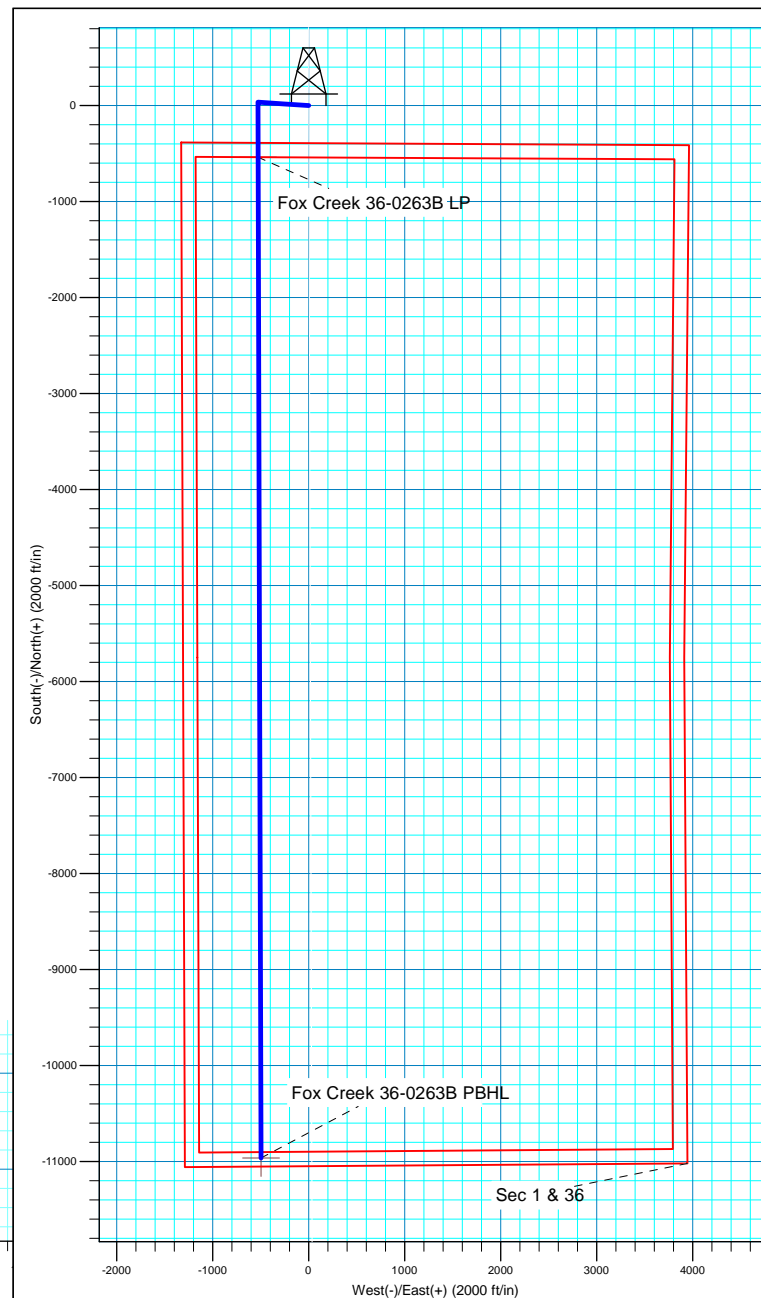
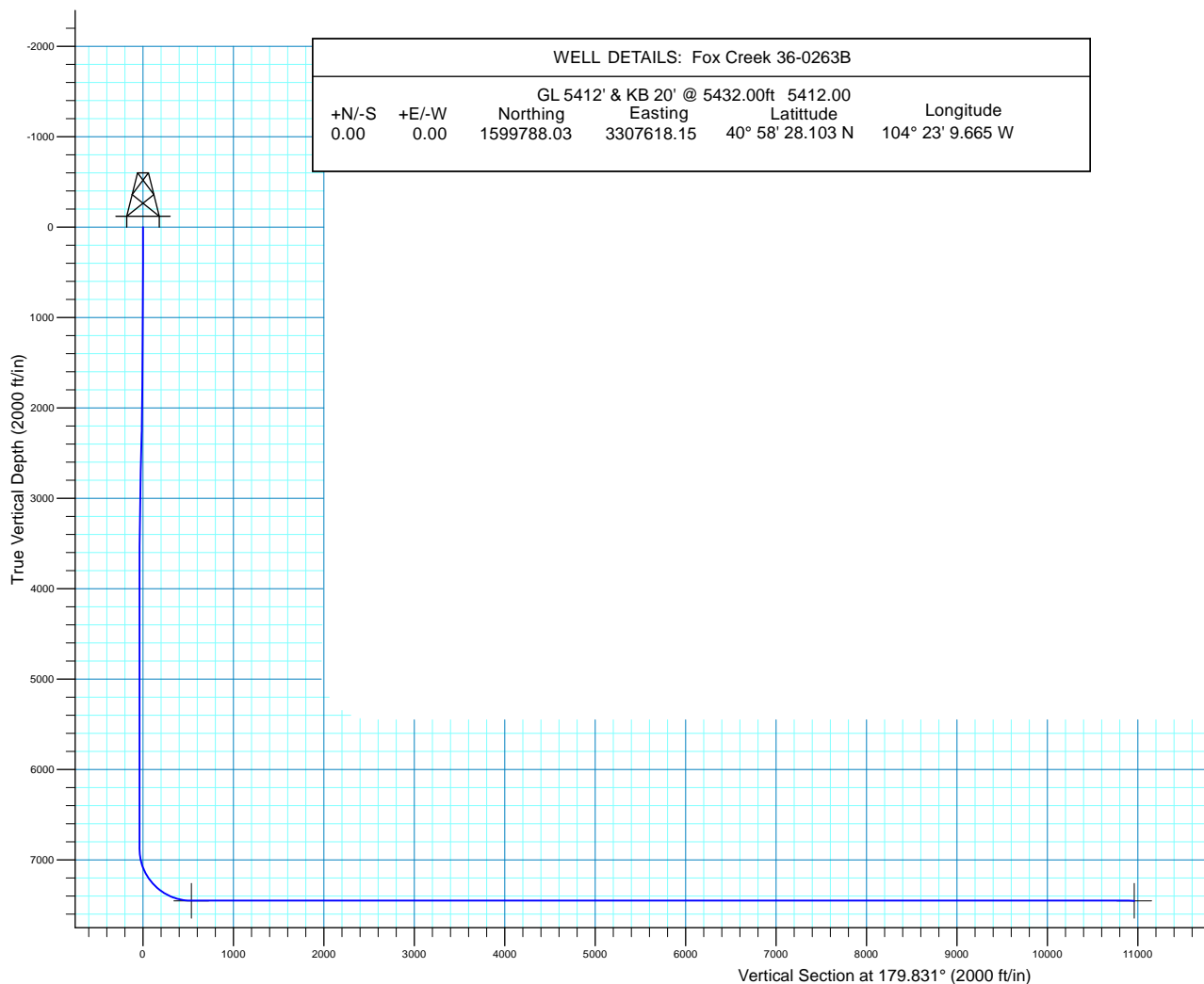
Created By: Seth Burstad

SECTION DETAILS

MD	Inc	Azi	TVD	+N/-S	+E/-W	Dleg	TFace	VSect
0.00	0.00	0.000	0.00	0.00	0.00	0.00	0.00	0.00
500.00	0.00	0.000	500.00	0.00	0.00	0.00	0.00	0.00
750.00	5.00	273.878	749.68	0.74	-10.88	2.00	273.88	-0.77
1703.95	5.00	273.878	1700.00	6.36	-93.83	0.00	0.00	-6.64
2387.40	18.67	273.878	2367.34	15.82	-233.34	2.00	0.00	-16.51
2687.48	18.67	273.878	2651.63	22.32	-329.18	0.00	0.00	-23.29
3932.09	0.00	0.000	3874.33	35.91	-529.70	1.50	180.00	-37.47
6936.80	0.00	0.000	6879.04	35.91	-529.70	0.00	0.00	-37.47
7836.80	90.00	179.831	7452.00	-537.05	-528.01	10.00	179.83	535.49
18262.26	90.00	179.831	7452.00	-10962.46	-497.29	0.00	0.00	10960.95

WELL DETAILS: Fox Creek 36-0263B

GL 5412' & KB 20' @ 5432.00ft 5412.00				Longitude	
+N/-S	+E/-W	Northing	Easting	Latitude	
0.00	0.00	1599788.03	3307618.15	40° 58' 28.103 N	104° 23' 9.665 W





HighPoint Resources

Weld County, CO NAD 83
Fox Creek 25 SW Pad
Fox Creek 36-0263B

OH

Plan: Plan 1

Standard Planning Report

17 October, 2018



Database:	Casper District	Local Co-ordinate Reference:	Well Fox Creek 36-0263B
Company:	HighPoint Resources	TVD Reference:	GL 5412' & KB 20' @ 5432.00ft
Project:	Weld County, CO NAD 83	MD Reference:	GL 5412' & KB 20' @ 5432.00ft
Site:	Fox Creek 25 SW Pad	North Reference:	True
Well:	Fox Creek 36-0263B	Survey Calculation Method:	Minimum Curvature
Wellbore:	OH		
Design:	Plan 1		

Project	Weld County, CO NAD 83		
Map System:	US State Plane 1983	System Datum:	Mean Sea Level
Geo Datum:	North American Datum 1983		
Map Zone:	Colorado Northern Zone		

Site		Fox Creek 25 SW Pad, Site Center : Fox Creek 25-6104B			
Site Position:		Northing:	1,599,789.47 usft	Latitude:	40° 58' 28.092 N
From:	Lat/Long	Easting:	3,307,818.08 usft	Longitude:	104° 23' 7.058 W
Position Uncertainty:	0.00 ft	Slot Radius:	13.200 in	Grid Convergence:	0.72 °

Well	Fox Creek 36-0263B, 390' FSL 1326' FWL Sec 25 T12N R63W					
Well Position	+N/-S	1.08 ft	Northing:	1,599,788.03 usft	Latitude:	40° 58' 28.103 N
	+E/-W	-199.93 ft	Easting:	3,307,618.15 usft	Longitude:	104° 23' 9.665 W
Position Uncertainty		0.00 ft	Wellhead Elevation:	0.00 ft	Ground Level:	5,412.00 ft

Wellbore	OH				
Magnetics	Model Name	Sample Date	Declination (°)	Dip Angle (°)	Field Strength (nT)
	HDGM	10/17/2018	8.28	67.28	52,808

Design	Plan 1			
Audit Notes:				
Version:	Phase:	PLAN	Tie On Depth:	0.00
Vertical Section:	Depth From (TVD) (ft)	+N/-S (ft)	+E/-W (ft)	Direction (°)
	0.00	0.00	0.00	179.831

Plan Sections										
Measured Depth (ft)	Inclination (°)	Azimuth (°)	Vertical Depth (ft)	+N/-S (ft)	+E/-W (ft)	Dogleg Rate (°/100ft)	Build Rate (°/100ft)	Turn Rate (°/100ft)	TFO (°)	Target
0.00	0.00	0.000	0.00	0.00	0.00	0.00	0.00	0.00	0.00	
500.00	0.00	0.000	500.00	0.00	0.00	0.00	0.00	0.00	0.00	
750.00	5.00	273.878	749.68	0.74	-10.88	2.00	2.00	0.00	273.88	
1,703.95	5.00	273.878	1,700.00	6.36	-93.83	0.00	0.00	0.00	0.00	
2,387.40	18.67	273.878	2,367.34	15.82	-233.34	2.00	2.00	0.00	0.00	
2,687.48	18.67	273.878	2,651.63	22.32	-329.18	0.00	0.00	0.00	0.00	
3,932.09	0.00	0.000	3,874.33	35.91	-529.70	1.50	-1.50	0.00	180.00	
6,936.80	0.00	0.000	6,879.04	35.91	-529.70	0.00	0.00	0.00	0.00	
7,836.80	90.00	179.831	7,452.00	-537.05	-528.01	10.00	10.00	19.98	179.83	
18,262.26	90.00	179.831	7,452.00	-10,962.47	-497.29	0.00	0.00	0.00	0.00	Fox Creek 36-0263B

Database:	Casper District	Local Co-ordinate Reference:	Well Fox Creek 36-0263B
Company:	HighPoint Resources	TVD Reference:	GL 5412' & KB 20' @ 5432.00ft
Project:	Weld County, CO NAD 83	MD Reference:	GL 5412' & KB 20' @ 5432.00ft
Site:	Fox Creek 25 SW Pad	North Reference:	True
Well:	Fox Creek 36-0263B	Survey Calculation Method:	Minimum Curvature
Wellbore:	OH		
Design:	Plan 1		

Planned Survey									
Measured Depth (ft)	Inclination (°)	Azimuth (°)	Vertical Depth (ft)	+N/-S (ft)	+E/-W (ft)	Vertical Section (ft)	Dogleg Rate (°/100ft)	Build Rate (°/100ft)	Turn Rate (°/100ft)
0.00	0.00	0.000	0.00	0.00	0.00	0.00	0.00	0.00	0.00
100.00	0.00	0.000	100.00	0.00	0.00	0.00	0.00	0.00	0.00
200.00	0.00	0.000	200.00	0.00	0.00	0.00	0.00	0.00	0.00
300.00	0.00	0.000	300.00	0.00	0.00	0.00	0.00	0.00	0.00
400.00	0.00	0.000	400.00	0.00	0.00	0.00	0.00	0.00	0.00
500.00	0.00	0.000	500.00	0.00	0.00	0.00	0.00	0.00	0.00
Start Build 2.00									
600.00	2.00	273.878	599.98	0.12	-1.74	-0.12	2.00	2.00	0.00
700.00	4.00	273.878	699.84	0.47	-6.96	-0.49	2.00	2.00	0.00
750.00	5.00	273.878	749.68	0.74	-10.88	-0.77	2.00	2.00	0.00
Start 953.95 hold at 750.00 MD									
800.00	5.00	273.878	799.49	1.03	-15.22	-1.08	0.00	0.00	0.00
900.00	5.00	273.878	899.11	1.62	-23.92	-1.69	0.00	0.00	0.00
1,000.00	5.00	273.878	998.73	2.21	-32.62	-2.31	0.00	0.00	0.00
1,100.00	5.00	273.878	1,098.35	2.80	-41.31	-2.92	0.00	0.00	0.00
1,200.00	5.00	273.878	1,197.97	3.39	-50.01	-3.54	0.00	0.00	0.00
1,300.00	5.00	273.878	1,297.59	3.98	-58.70	-4.15	0.00	0.00	0.00
1,400.00	5.00	273.878	1,397.21	4.57	-67.40	-4.77	0.00	0.00	0.00
1,500.00	5.00	273.878	1,496.83	5.16	-76.09	-5.38	0.00	0.00	0.00
1,600.00	5.00	273.878	1,596.45	5.75	-84.79	-6.00	0.00	0.00	0.00
1,700.00	5.00	273.878	1,696.07	6.34	-93.48	-6.61	0.00	0.00	0.00
1,703.95	5.00	273.878	1,700.00	6.36	-93.83	-6.64	0.00	0.00	0.00
Start DLS 2.00 TFO 0.00									
1,800.00	6.92	273.878	1,795.53	7.03	-103.78	-7.34	2.00	2.00	0.00
1,900.00	8.92	273.878	1,894.57	7.97	-117.53	-8.31	2.00	2.00	0.00
2,000.00	10.92	273.878	1,993.07	9.13	-134.72	-9.53	2.00	2.00	0.00
2,100.00	12.92	273.878	2,090.91	10.53	-155.32	-10.99	2.00	2.00	0.00
2,200.00	14.92	273.878	2,187.97	12.16	-179.33	-12.69	2.00	2.00	0.00
2,300.00	16.92	273.878	2,284.12	14.01	-206.69	-14.62	2.00	2.00	0.00
2,387.40	18.67	273.878	2,367.34	15.82	-233.34	-16.51	2.00	2.00	0.00
Start 300.07 hold at 2387.40 MD									
2,400.00	18.67	273.878	2,379.28	16.09	-237.37	-16.79	0.00	0.00	0.00
2,500.00	18.67	273.878	2,474.02	18.26	-269.30	-19.05	0.00	0.00	0.00
2,600.00	18.67	273.878	2,568.75	20.42	-301.24	-21.31	0.00	0.00	0.00
2,687.48	18.67	273.878	2,651.63	22.32	-329.18	-23.29	0.00	0.00	0.00
Start Drop -1.50									
2,700.00	18.48	273.878	2,663.50	22.59	-333.16	-23.57	1.50	-1.50	0.00
2,800.00	16.98	273.878	2,758.75	24.65	-363.54	-25.72	1.50	-1.50	0.00
2,900.00	15.48	273.878	2,854.76	26.54	-391.43	-27.69	1.50	-1.50	0.00
3,000.00	13.98	273.878	2,951.47	28.26	-416.80	-29.49	1.50	-1.50	0.00
3,100.00	12.48	273.878	3,048.81	29.80	-439.63	-31.10	1.50	-1.50	0.00
3,200.00	10.98	273.878	3,146.72	31.18	-459.92	-32.54	1.50	-1.50	0.00
3,300.00	9.48	273.878	3,245.12	32.38	-477.64	-33.79	1.50	-1.50	0.00
3,400.00	7.98	273.878	3,343.96	33.41	-492.78	-34.86	1.50	-1.50	0.00
3,500.00	6.48	273.878	3,443.16	34.26	-505.34	-35.75	1.50	-1.50	0.00
3,600.00	4.98	273.878	3,542.66	34.93	-515.31	-36.45	1.50	-1.50	0.00
3,700.00	3.48	273.878	3,642.39	35.43	-522.67	-36.97	1.50	-1.50	0.00
3,800.00	1.98	273.878	3,742.27	35.76	-527.42	-37.31	1.50	-1.50	0.00
3,900.00	0.48	273.878	3,842.24	35.90	-529.57	-37.46	1.50	-1.50	0.00
3,932.09	0.00	0.000	3,874.33	35.91	-529.70	-37.47	1.50	-1.50	0.00
Start 3004.71 hold at 3932.09 MD									
4,000.00	0.00	0.000	3,942.24	35.91	-529.70	-37.47	0.00	0.00	0.00
4,100.00	0.00	0.000	4,042.24	35.91	-529.70	-37.47	0.00	0.00	0.00

Database:	Casper District	Local Co-ordinate Reference:	Well Fox Creek 36-0263B
Company:	HighPoint Resources	TVD Reference:	GL 5412' & KB 20' @ 5432.00ft
Project:	Weld County, CO NAD 83	MD Reference:	GL 5412' & KB 20' @ 5432.00ft
Site:	Fox Creek 25 SW Pad	North Reference:	True
Well:	Fox Creek 36-0263B	Survey Calculation Method:	Minimum Curvature
Wellbore:	OH		
Design:	Plan 1		

Planned Survey									
Measured Depth (ft)	Inclination (°)	Azimuth (°)	Vertical Depth (ft)	+N/-S (ft)	+E/-W (ft)	Vertical Section (ft)	Dogleg Rate (°/100ft)	Build Rate (°/100ft)	Turn Rate (°/100ft)
4,200.00	0.00	0.000	4,142.24	35.91	-529.70	-37.47	0.00	0.00	0.00
4,300.00	0.00	0.000	4,242.24	35.91	-529.70	-37.47	0.00	0.00	0.00
4,400.00	0.00	0.000	4,342.24	35.91	-529.70	-37.47	0.00	0.00	0.00
4,500.00	0.00	0.000	4,442.24	35.91	-529.70	-37.47	0.00	0.00	0.00
4,600.00	0.00	0.000	4,542.24	35.91	-529.70	-37.47	0.00	0.00	0.00
4,700.00	0.00	0.000	4,642.24	35.91	-529.70	-37.47	0.00	0.00	0.00
4,800.00	0.00	0.000	4,742.24	35.91	-529.70	-37.47	0.00	0.00	0.00
4,900.00	0.00	0.000	4,842.24	35.91	-529.70	-37.47	0.00	0.00	0.00
5,000.00	0.00	0.000	4,942.24	35.91	-529.70	-37.47	0.00	0.00	0.00
5,100.00	0.00	0.000	5,042.24	35.91	-529.70	-37.47	0.00	0.00	0.00
5,200.00	0.00	0.000	5,142.24	35.91	-529.70	-37.47	0.00	0.00	0.00
5,300.00	0.00	0.000	5,242.24	35.91	-529.70	-37.47	0.00	0.00	0.00
5,400.00	0.00	0.000	5,342.24	35.91	-529.70	-37.47	0.00	0.00	0.00
5,500.00	0.00	0.000	5,442.24	35.91	-529.70	-37.47	0.00	0.00	0.00
5,600.00	0.00	0.000	5,542.24	35.91	-529.70	-37.47	0.00	0.00	0.00
5,700.00	0.00	0.000	5,642.24	35.91	-529.70	-37.47	0.00	0.00	0.00
5,800.00	0.00	0.000	5,742.24	35.91	-529.70	-37.47	0.00	0.00	0.00
5,900.00	0.00	0.000	5,842.24	35.91	-529.70	-37.47	0.00	0.00	0.00
6,000.00	0.00	0.000	5,942.24	35.91	-529.70	-37.47	0.00	0.00	0.00
6,100.00	0.00	0.000	6,042.24	35.91	-529.70	-37.47	0.00	0.00	0.00
6,200.00	0.00	0.000	6,142.24	35.91	-529.70	-37.47	0.00	0.00	0.00
6,300.00	0.00	0.000	6,242.24	35.91	-529.70	-37.47	0.00	0.00	0.00
6,400.00	0.00	0.000	6,342.24	35.91	-529.70	-37.47	0.00	0.00	0.00
6,500.00	0.00	0.000	6,442.24	35.91	-529.70	-37.47	0.00	0.00	0.00
6,600.00	0.00	0.000	6,542.24	35.91	-529.70	-37.47	0.00	0.00	0.00
6,700.00	0.00	0.000	6,642.24	35.91	-529.70	-37.47	0.00	0.00	0.00
6,800.00	0.00	0.000	6,742.24	35.91	-529.70	-37.47	0.00	0.00	0.00
6,900.00	0.00	0.000	6,842.24	35.91	-529.70	-37.47	0.00	0.00	0.00
6,936.80	0.00	0.000	6,879.04	35.91	-529.70	-37.47	0.00	0.00	0.00
Start DLS 10.00 TFO 179.83									
7,000.00	6.32	179.831	6,942.12	32.43	-529.69	-33.99	10.00	10.00	0.00
7,100.00	16.32	179.831	7,040.05	12.82	-529.63	-14.39	10.00	10.00	0.00
7,200.00	26.32	179.831	7,133.08	-23.49	-529.52	21.93	10.00	10.00	0.00
7,300.00	36.32	179.831	7,218.40	-75.41	-529.37	73.84	10.00	10.00	0.00
7,400.00	46.32	179.831	7,293.41	-141.35	-529.18	139.79	10.00	10.00	0.00
7,500.00	56.32	179.831	7,355.83	-219.31	-528.95	217.75	10.00	10.00	0.00
7,600.00	66.32	179.831	7,403.76	-306.93	-528.69	305.37	10.00	10.00	0.00
7,700.00	76.32	179.831	7,435.75	-401.55	-528.41	399.99	10.00	10.00	0.00
7,800.00	86.32	179.831	7,450.82	-500.27	-528.12	498.71	10.00	10.00	0.00
7,836.80	90.00	179.831	7,452.00	-537.05	-528.01	535.49	10.00	10.00	0.00
Start 10425.47 hold at 7836.80 MD									
7,900.00	90.00	179.831	7,452.00	-600.25	-527.83	598.69	0.00	0.00	0.00
8,000.00	90.00	179.831	7,452.00	-700.25	-527.53	698.69	0.00	0.00	0.00
8,100.00	90.00	179.831	7,452.00	-800.25	-527.24	798.69	0.00	0.00	0.00
8,200.00	90.00	179.831	7,452.00	-900.25	-526.94	898.69	0.00	0.00	0.00
8,300.00	90.00	179.831	7,452.00	-1,000.25	-526.65	998.69	0.00	0.00	0.00
8,400.00	90.00	179.831	7,452.00	-1,100.25	-526.35	1,098.69	0.00	0.00	0.00
8,500.00	90.00	179.831	7,452.00	-1,200.25	-526.06	1,198.69	0.00	0.00	0.00
8,600.00	90.00	179.831	7,452.00	-1,300.25	-525.76	1,298.69	0.00	0.00	0.00
8,700.00	90.00	179.831	7,452.00	-1,400.25	-525.47	1,398.69	0.00	0.00	0.00
8,800.00	90.00	179.831	7,452.00	-1,500.25	-525.17	1,498.69	0.00	0.00	0.00
8,900.00	90.00	179.831	7,452.00	-1,600.24	-524.88	1,598.69	0.00	0.00	0.00
9,000.00	90.00	179.831	7,452.00	-1,700.24	-524.58	1,698.69	0.00	0.00	0.00
9,100.00	90.00	179.831	7,452.00	-1,800.24	-524.29	1,798.69	0.00	0.00	0.00

Database:	Casper District	Local Co-ordinate Reference:	Well Fox Creek 36-0263B
Company:	HighPoint Resources	TVD Reference:	GL 5412' & KB 20' @ 5432.00ft
Project:	Weld County, CO NAD 83	MD Reference:	GL 5412' & KB 20' @ 5432.00ft
Site:	Fox Creek 25 SW Pad	North Reference:	True
Well:	Fox Creek 36-0263B	Survey Calculation Method:	Minimum Curvature
Wellbore:	OH		
Design:	Plan 1		

Planned Survey									
Measured Depth (ft)	Inclination (°)	Azimuth (°)	Vertical Depth (ft)	+N/-S (ft)	+E/-W (ft)	Vertical Section (ft)	Dogleg Rate (°/100ft)	Build Rate (°/100ft)	Turn Rate (°/100ft)
9,200.00	90.00	179.831	7,452.00	-1,900.24	-524.00	1,898.69	0.00	0.00	0.00
9,300.00	90.00	179.831	7,452.00	-2,000.24	-523.70	1,998.69	0.00	0.00	0.00
9,400.00	90.00	179.831	7,452.00	-2,100.24	-523.41	2,098.69	0.00	0.00	0.00
9,500.00	90.00	179.831	7,452.00	-2,200.24	-523.11	2,198.69	0.00	0.00	0.00
9,600.00	90.00	179.831	7,452.00	-2,300.24	-522.82	2,298.69	0.00	0.00	0.00
9,700.00	90.00	179.831	7,452.00	-2,400.24	-522.52	2,398.69	0.00	0.00	0.00
9,800.00	90.00	179.831	7,452.00	-2,500.24	-522.23	2,498.69	0.00	0.00	0.00
9,900.00	90.00	179.831	7,452.00	-2,600.24	-521.93	2,598.69	0.00	0.00	0.00
10,000.00	90.00	179.831	7,452.00	-2,700.24	-521.64	2,698.69	0.00	0.00	0.00
10,100.00	90.00	179.831	7,452.00	-2,800.24	-521.34	2,798.69	0.00	0.00	0.00
10,200.00	90.00	179.831	7,452.00	-2,900.24	-521.05	2,898.69	0.00	0.00	0.00
10,300.00	90.00	179.831	7,452.00	-3,000.24	-520.75	2,998.69	0.00	0.00	0.00
10,400.00	90.00	179.831	7,452.00	-3,100.24	-520.46	3,098.69	0.00	0.00	0.00
10,500.00	90.00	179.831	7,452.00	-3,200.24	-520.16	3,198.69	0.00	0.00	0.00
10,600.00	90.00	179.831	7,452.00	-3,300.24	-519.87	3,298.69	0.00	0.00	0.00
10,700.00	90.00	179.831	7,452.00	-3,400.24	-519.58	3,398.69	0.00	0.00	0.00
10,800.00	90.00	179.831	7,452.00	-3,500.24	-519.28	3,498.69	0.00	0.00	0.00
10,900.00	90.00	179.831	7,452.00	-3,600.24	-518.99	3,598.69	0.00	0.00	0.00
11,000.00	90.00	179.831	7,452.00	-3,700.24	-518.69	3,698.69	0.00	0.00	0.00
11,100.00	90.00	179.831	7,452.00	-3,800.24	-518.40	3,798.69	0.00	0.00	0.00
11,200.00	90.00	179.831	7,452.00	-3,900.23	-518.10	3,898.69	0.00	0.00	0.00
11,300.00	90.00	179.831	7,452.00	-4,000.23	-517.81	3,998.69	0.00	0.00	0.00
11,400.00	90.00	179.831	7,452.00	-4,100.23	-517.51	4,098.69	0.00	0.00	0.00
11,500.00	90.00	179.831	7,452.00	-4,200.23	-517.22	4,198.69	0.00	0.00	0.00
11,600.00	90.00	179.831	7,452.00	-4,300.23	-516.92	4,298.69	0.00	0.00	0.00
11,700.00	90.00	179.831	7,452.00	-4,400.23	-516.63	4,398.69	0.00	0.00	0.00
11,800.00	90.00	179.831	7,452.00	-4,500.23	-516.33	4,498.69	0.00	0.00	0.00
11,900.00	90.00	179.831	7,452.00	-4,600.23	-516.04	4,598.69	0.00	0.00	0.00
12,000.00	90.00	179.831	7,452.00	-4,700.23	-515.75	4,698.69	0.00	0.00	0.00
12,100.00	90.00	179.831	7,452.00	-4,800.23	-515.45	4,798.69	0.00	0.00	0.00
12,200.00	90.00	179.831	7,452.00	-4,900.23	-515.16	4,898.69	0.00	0.00	0.00
12,300.00	90.00	179.831	7,452.00	-5,000.23	-514.86	4,998.69	0.00	0.00	0.00
12,400.00	90.00	179.831	7,452.00	-5,100.23	-514.57	5,098.69	0.00	0.00	0.00
12,500.00	90.00	179.831	7,452.00	-5,200.23	-514.27	5,198.69	0.00	0.00	0.00
12,600.00	90.00	179.831	7,452.00	-5,300.23	-513.98	5,298.69	0.00	0.00	0.00
12,700.00	90.00	179.831	7,452.00	-5,400.23	-513.68	5,398.69	0.00	0.00	0.00
12,800.00	90.00	179.831	7,452.00	-5,500.23	-513.39	5,498.69	0.00	0.00	0.00
12,900.00	90.00	179.831	7,452.00	-5,600.23	-513.09	5,598.69	0.00	0.00	0.00
13,000.00	90.00	179.831	7,452.00	-5,700.23	-512.80	5,698.69	0.00	0.00	0.00
13,100.00	90.00	179.831	7,452.00	-5,800.23	-512.50	5,798.69	0.00	0.00	0.00
13,200.00	90.00	179.831	7,452.00	-5,900.23	-512.21	5,898.69	0.00	0.00	0.00
13,300.00	90.00	179.831	7,452.00	-6,000.23	-511.91	5,998.69	0.00	0.00	0.00
13,400.00	90.00	179.831	7,452.00	-6,100.23	-511.62	6,098.69	0.00	0.00	0.00
13,500.00	90.00	179.831	7,452.00	-6,200.22	-511.33	6,198.69	0.00	0.00	0.00
13,600.00	90.00	179.831	7,452.00	-6,300.22	-511.03	6,298.69	0.00	0.00	0.00
13,700.00	90.00	179.831	7,452.00	-6,400.22	-510.74	6,398.69	0.00	0.00	0.00
13,800.00	90.00	179.831	7,452.00	-6,500.22	-510.44	6,498.69	0.00	0.00	0.00
13,900.00	90.00	179.831	7,452.00	-6,600.22	-510.15	6,598.69	0.00	0.00	0.00
14,000.00	90.00	179.831	7,452.00	-6,700.22	-509.85	6,698.69	0.00	0.00	0.00
14,100.00	90.00	179.831	7,452.00	-6,800.22	-509.56	6,798.69	0.00	0.00	0.00
14,200.00	90.00	179.831	7,452.00	-6,900.22	-509.26	6,898.69	0.00	0.00	0.00
14,300.00	90.00	179.831	7,452.00	-7,000.22	-508.97	6,998.69	0.00	0.00	0.00
14,400.00	90.00	179.831	7,452.00	-7,100.22	-508.67	7,098.69	0.00	0.00	0.00
14,500.00	90.00	179.831	7,452.00	-7,200.22	-508.38	7,198.69	0.00	0.00	0.00

Database:	Casper District	Local Co-ordinate Reference:	Well Fox Creek 36-0263B
Company:	HighPoint Resources	TVD Reference:	GL 5412' & KB 20' @ 5432.00ft
Project:	Weld County, CO NAD 83	MD Reference:	GL 5412' & KB 20' @ 5432.00ft
Site:	Fox Creek 25 SW Pad	North Reference:	True
Well:	Fox Creek 36-0263B	Survey Calculation Method:	Minimum Curvature
Wellbore:	OH		
Design:	Plan 1		

Planned Survey										
Measured Depth (ft)	Inclination (°)	Azimuth (°)	Vertical Depth (ft)	+N/-S (ft)	+E/-W (ft)	Vertical Section (ft)	Dogleg Rate (°/100ft)	Build Rate (°/100ft)	Turn Rate (°/100ft)	
14,600.00	90.00	179.831	7,452.00	-7,300.22	-508.08	7,298.69	0.00	0.00	0.00	
14,700.00	90.00	179.831	7,452.00	-7,400.22	-507.79	7,398.69	0.00	0.00	0.00	
14,800.00	90.00	179.831	7,452.00	-7,500.22	-507.50	7,498.69	0.00	0.00	0.00	
14,900.00	90.00	179.831	7,452.00	-7,600.22	-507.20	7,598.69	0.00	0.00	0.00	
15,000.00	90.00	179.831	7,452.00	-7,700.22	-506.91	7,698.69	0.00	0.00	0.00	
15,100.00	90.00	179.831	7,452.00	-7,800.22	-506.61	7,798.69	0.00	0.00	0.00	
15,200.00	90.00	179.831	7,452.00	-7,900.22	-506.32	7,898.69	0.00	0.00	0.00	
15,300.00	90.00	179.831	7,452.00	-8,000.22	-506.02	7,998.69	0.00	0.00	0.00	
15,400.00	90.00	179.831	7,452.00	-8,100.22	-505.73	8,098.69	0.00	0.00	0.00	
15,500.00	90.00	179.831	7,452.00	-8,200.22	-505.43	8,198.69	0.00	0.00	0.00	
15,600.00	90.00	179.831	7,452.00	-8,300.22	-505.14	8,298.69	0.00	0.00	0.00	
15,700.00	90.00	179.831	7,452.00	-8,400.22	-504.84	8,398.69	0.00	0.00	0.00	
15,800.00	90.00	179.831	7,452.00	-8,500.21	-504.55	8,498.69	0.00	0.00	0.00	
15,900.00	90.00	179.831	7,452.00	-8,600.21	-504.25	8,598.69	0.00	0.00	0.00	
16,000.00	90.00	179.831	7,452.00	-8,700.21	-503.96	8,698.69	0.00	0.00	0.00	
16,100.00	90.00	179.831	7,452.00	-8,800.21	-503.66	8,798.69	0.00	0.00	0.00	
16,200.00	90.00	179.831	7,452.00	-8,900.21	-503.37	8,898.69	0.00	0.00	0.00	
16,300.00	90.00	179.831	7,452.00	-9,000.21	-503.08	8,998.69	0.00	0.00	0.00	
16,400.00	90.00	179.831	7,452.00	-9,100.21	-502.78	9,098.69	0.00	0.00	0.00	
16,500.00	90.00	179.831	7,452.00	-9,200.21	-502.49	9,198.69	0.00	0.00	0.00	
16,600.00	90.00	179.831	7,452.00	-9,300.21	-502.19	9,298.69	0.00	0.00	0.00	
16,700.00	90.00	179.831	7,452.00	-9,400.21	-501.90	9,398.69	0.00	0.00	0.00	
16,800.00	90.00	179.831	7,452.00	-9,500.21	-501.60	9,498.69	0.00	0.00	0.00	
16,900.00	90.00	179.831	7,452.00	-9,600.21	-501.31	9,598.69	0.00	0.00	0.00	
17,000.00	90.00	179.831	7,452.00	-9,700.21	-501.01	9,698.69	0.00	0.00	0.00	
17,100.00	90.00	179.831	7,452.00	-9,800.21	-500.72	9,798.69	0.00	0.00	0.00	
17,200.00	90.00	179.831	7,452.00	-9,900.21	-500.42	9,898.69	0.00	0.00	0.00	
17,300.00	90.00	179.831	7,452.00	-10,000.21	-500.13	9,998.69	0.00	0.00	0.00	
17,400.00	90.00	179.831	7,452.00	-10,100.21	-499.83	10,098.69	0.00	0.00	0.00	
17,500.00	90.00	179.831	7,452.00	-10,200.21	-499.54	10,198.69	0.00	0.00	0.00	
17,600.00	90.00	179.831	7,452.00	-10,300.21	-499.25	10,298.69	0.00	0.00	0.00	
17,700.00	90.00	179.831	7,452.00	-10,400.21	-498.95	10,398.69	0.00	0.00	0.00	
17,800.00	90.00	179.831	7,452.00	-10,500.21	-498.66	10,498.69	0.00	0.00	0.00	
17,900.00	90.00	179.831	7,452.00	-10,600.21	-498.36	10,598.69	0.00	0.00	0.00	
18,000.00	90.00	179.831	7,452.00	-10,700.21	-498.07	10,698.69	0.00	0.00	0.00	
18,100.00	90.00	179.831	7,452.00	-10,800.20	-497.77	10,798.69	0.00	0.00	0.00	
18,200.00	90.00	179.831	7,452.00	-10,900.20	-497.48	10,898.69	0.00	0.00	0.00	
18,262.26	90.00	179.831	7,452.00	-10,962.47	-497.29	10,960.95	0.00	0.00	0.00	
TD at 18262.27										

Design Targets										
Target Name	Dip Angle (°)	Dip Dir. (°)	TVD (ft)	+N/-S (ft)	+E/-W (ft)	Northing (usft)	Easting (usft)	Latitude		Longitude
- hit/miss target										
- Shape										
Fox Creek 36-0263B LP - plan hits target center - Point	0.00	0.000	7,452.00	-537.05	-528.01	1,599,244.39	3,307,096.93	40° 58' 22.796 N		104° 23' 16.548 W
Fox Creek 36-0263B PB - plan hits target center - Point	0.00	0.000	7,452.00	-10,962.47	-497.29	1,588,820.20	3,307,258.61	40° 56' 39.790 N		104° 23' 16.145 W

Database:	Casper District	Local Co-ordinate Reference:	Well Fox Creek 36-0263B
Company:	HighPoint Resources	TVD Reference:	GL 5412' & KB 20' @ 5432.00ft
Project:	Weld County, CO NAD 83	MD Reference:	GL 5412' & KB 20' @ 5432.00ft
Site:	Fox Creek 25 SW Pad	North Reference:	True
Well:	Fox Creek 36-0263B	Survey Calculation Method:	Minimum Curvature
Wellbore:	OH		
Design:	Plan 1		

Plan Annotations				
Measured Depth (ft)	Vertical Depth (ft)	Local Coordinates		Comment
		+N/-S (ft)	+E/-W (ft)	
500.00	500.00	0.00	0.00	Start Build 2.00
750.00	749.68	0.74	-10.88	Start 953.95 hold at 750.00 MD
1,703.95	1,700.00	6.36	-93.83	Start DLS 2.00 TFO 0.00
2,387.40	2,367.34	15.82	-233.34	Start 300.07 hold at 2387.40 MD
2,687.48	2,651.63	22.32	-329.18	Start Drop -1.50
3,932.09	3,874.33	35.91	-529.70	Start 3004.71 hold at 3932.09 MD
6,936.80	6,879.04	35.91	-529.70	Start DLS 10.00 TFO 179.83
7,836.80	7,452.00	-537.05	-528.01	Start 10425.47 hold at 7836.80 MD
18,262.26	7,452.00	-10,962.47	-497.29	TD at 18262.27