



# RADIAL CEMENT BOND LOG

Company ANADARKO PETROLEUM CORP. Well DRY CREEK 23-27 Field WATTENBERG County WELD State COLORADO	Company ANADARKO PETROLEUM CORP. Well DRY CREEK 23-27 Field WATTENBERG County WELD State COLORADO
---	---

Location: SEC 27 TWP 1N RGE 67W SE SE Permanent Datum GROUND LEVEL Elevation 5044' Log Measured From KELLY BUSHING = 15' Drilling Measured From KELLY BUSHING	API # : 05-123-31593 Other Services NONE Elevation K.B. 5059' D.F. 5059' G.L. 5044'
---	---

Date 04 JUNE 2019 Run Number ONE Depth Driller 8155' Depth Logger 4500' Bottom Logged Interval 4500' Top Log Interval SURFACE Open Hole Size 7.875" Type Fluid WATER Density / Viscosity ~8.3# Max. Recorded Temp. 998' Estimated Cement Top ROA Time Well Ready 01:15PM Time Logger on Bottom W-060 Equipment Number WINDSOR, CO Location T. HAWLEY Recorded By R. REYES Witnessed By	Borehole Record <table border="1" style="width: 100%; border-collapse: collapse;"> <tr> <th>Run Number</th> <th>Bit</th> <th>From</th> <th>To</th> <th>Size</th> <th>Weight</th> <th>From</th> <th>To</th> </tr> <tr> <td>1</td> <td>12.25"</td> <td>0'</td> <td>1195'</td> <td></td> <td></td> <td></td> <td></td> </tr> </table> Tubing Record <table border="1" style="width: 100%; border-collapse: collapse;"> <tr> <th>Run Number</th> <th>Bit</th> <th>From</th> <th>To</th> <th>Size</th> <th>Weight</th> <th>From</th> <th>To</th> </tr> <tr> <td></td> <td></td> <td></td> <td></td> <td></td> <td></td> <td></td> <td></td> </tr> </table>	Run Number	Bit	From	To	Size	Weight	From	To	1	12.25"	0'	1195'					Run Number	Bit	From	To	Size	Weight	From	To								
Run Number	Bit	From	To	Size	Weight	From	To																										
1	12.25"	0'	1195'																														
Run Number	Bit	From	To	Size	Weight	From	To																										


Casing Record Surface String 8.62" Prot. String Production String 4.5" Liner	Size 8.62" Wgt/Ft 24# Top 0' Bottom 1195' Size 4.5" Wgt/Ft 11.6# Top 0' Bottom 8155'
--	---

<<< Fold Here >>>

All interpretations are opinions based on inferences from electrical or other measurements and we cannot and do not guarantee the accuracy or correctness of any interpretation, and we shall not, except in the case of gross or willful negligence on our part, be liable or responsible for any loss, costs, damages, or expenses incurred or sustained by anyone resulting from any interpretation made by any of our officers, agents or employees. These interpretations are also subject to our general terms and conditions set out in our current Price Schedule.

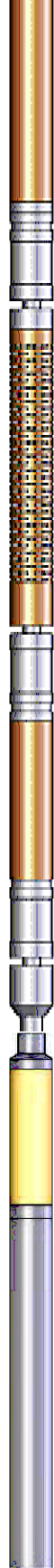
### Comments

**THANK YOU FOR USING CUTTERS WIRELINE**  
  
**DATE OF SHOP CALIBRATION: 10/18**  
**LOG RAN UNDER 500PSI**  
**FREE PIPE CALIBRATION @ 512'**

Sensor	Offset (ft)	Schematic	Description	Len (ft)	OD (in)	Wt (lb)
						

WVF3FT  
 WVFCAL  
 WVFS1  
 WVFS2  
 WVFS3  
 WVFS4  
 WVFS5  
 WVFS6  
 WVFS7  
 WVFS8  
 WVF5FT

8.19  
 8.19  
 8.19  
 8.19  
 8.19  
 8.19  
 8.19  
 8.19  
 8.19  
 8.19  
 7.19



RBT-Probe (060112\_55)  
 Probe 2.75" Radii Bond Tool

8.75

2.75

90.00

CCL

3.50

GR-Probe (060109)  
 Probe 2.75" 4 Channel Pulse

4.00

2.75

30.00

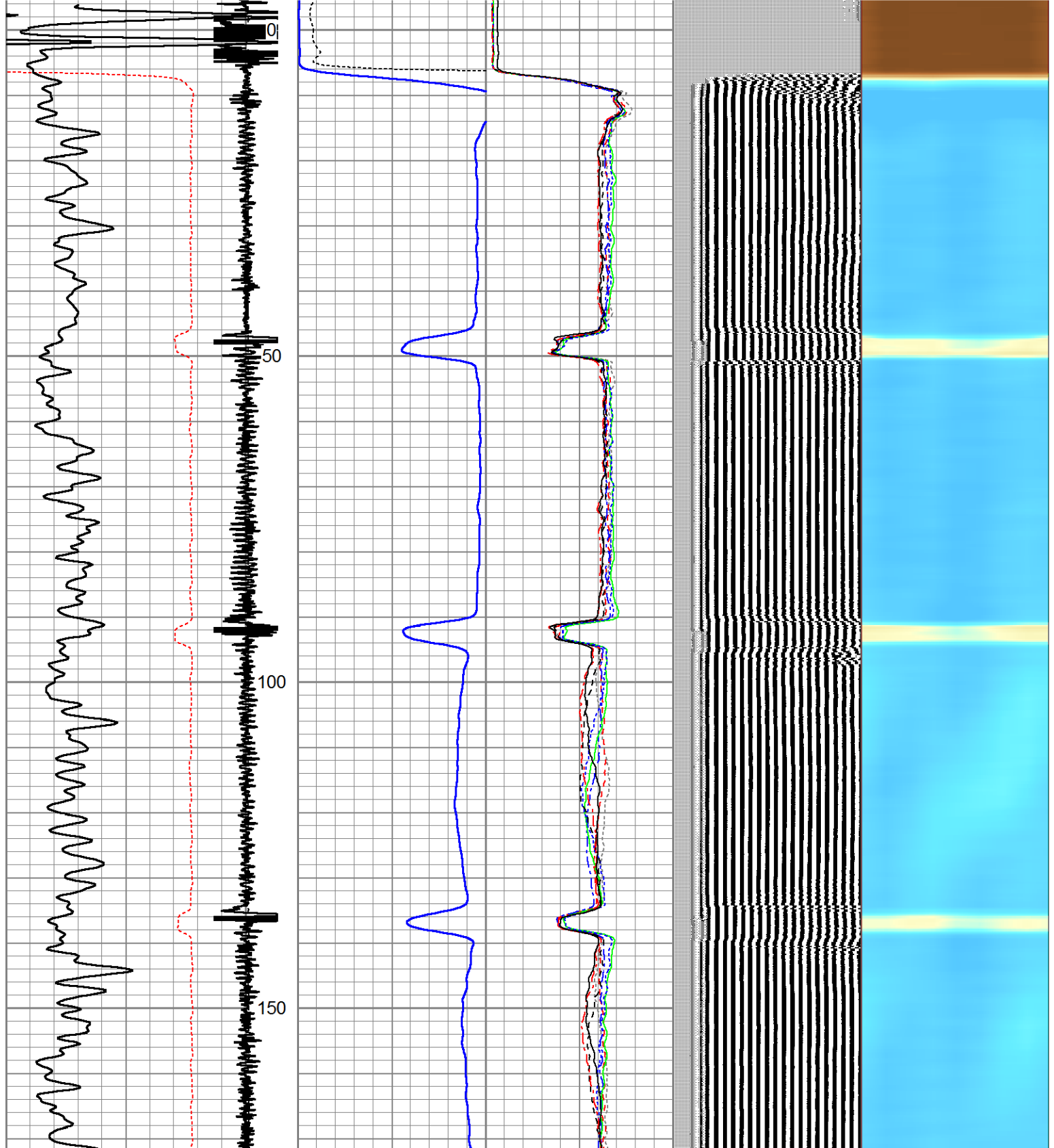
GR

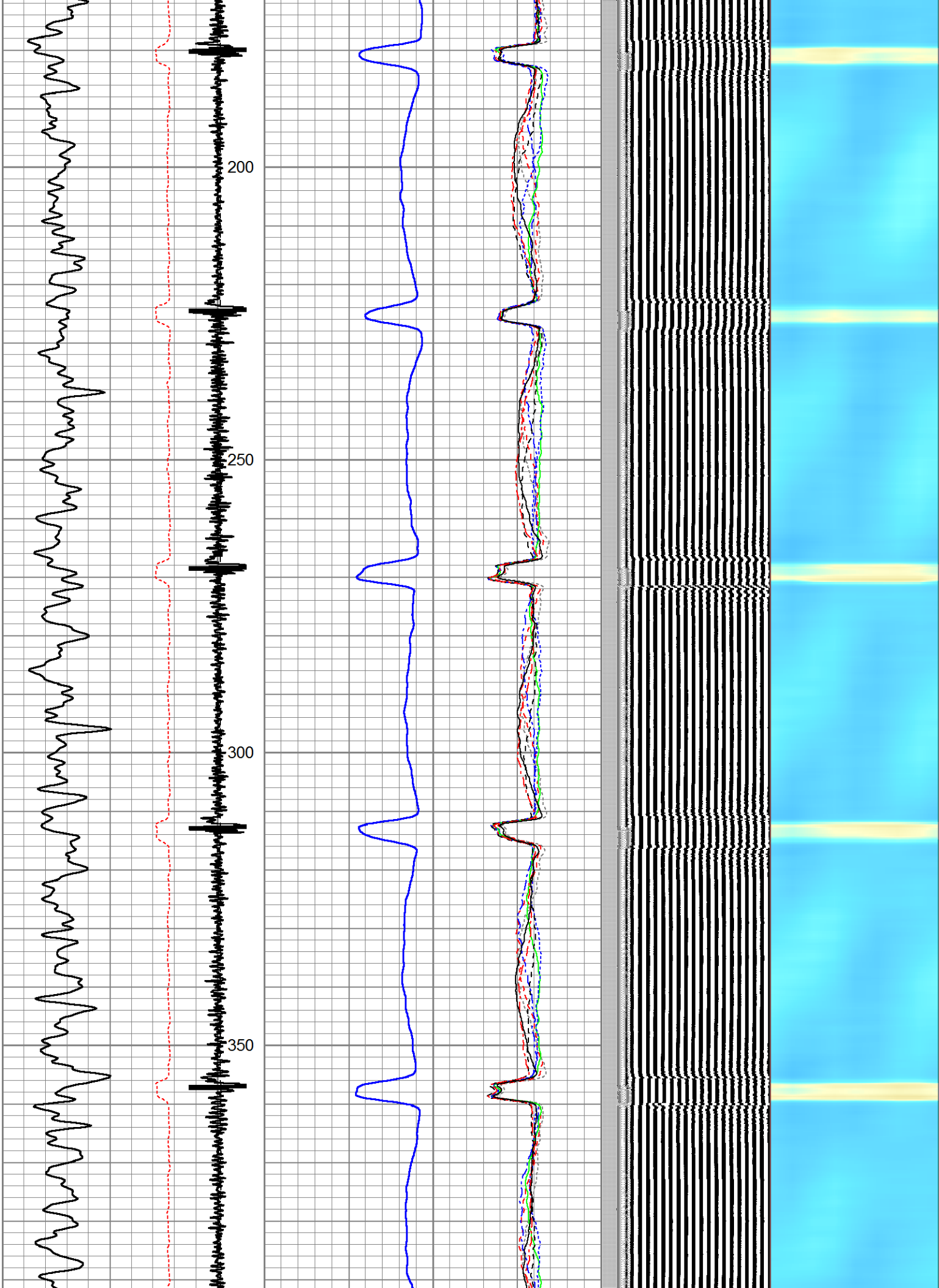
1.00

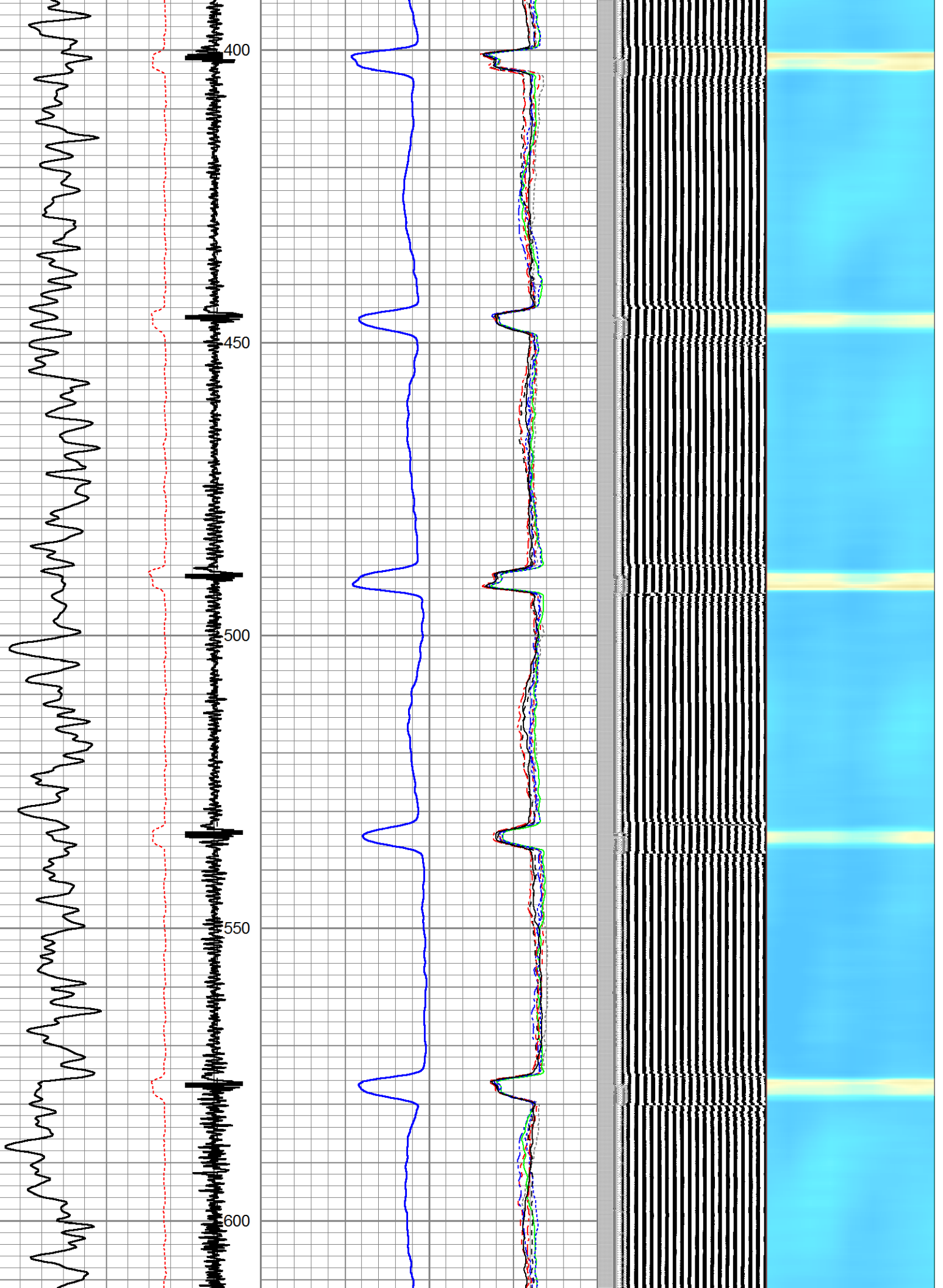
Dataset: dry creek 23-27.db: field/well/run1/pass232  
 Total Length: 12.75 ft  
 Total Weight: 120.00 lb  
 O.D.: 2.75 in

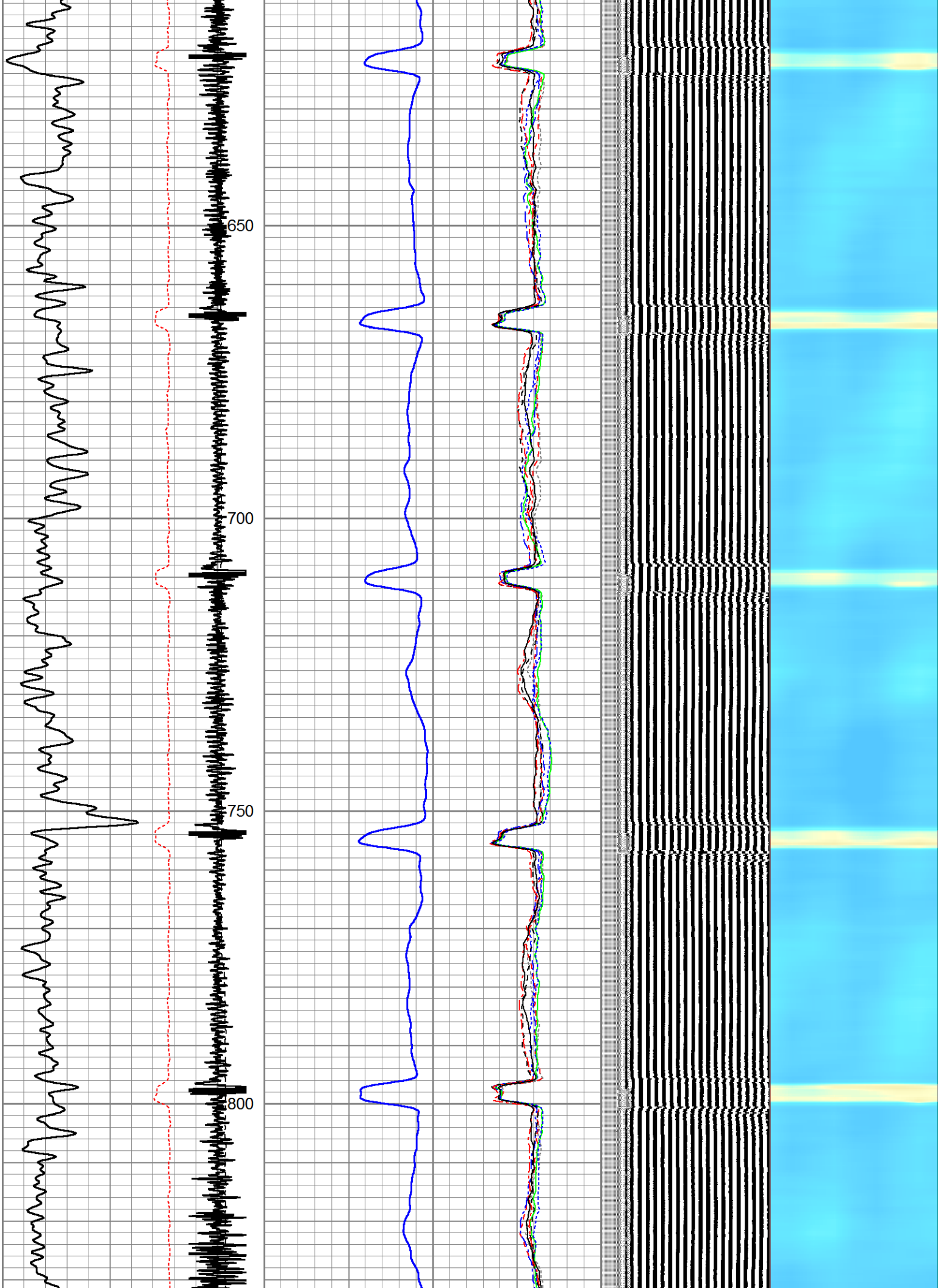
Database File: dry creek 23-27.db  
 Dataset Pathname: pass232  
 Presentation Format: rbl55  
 Dataset Creation: Wed Jun 05 01:23:56 2019 by Log 7.0 B1  
 Charted by: Depth in Feet scaled 1:240

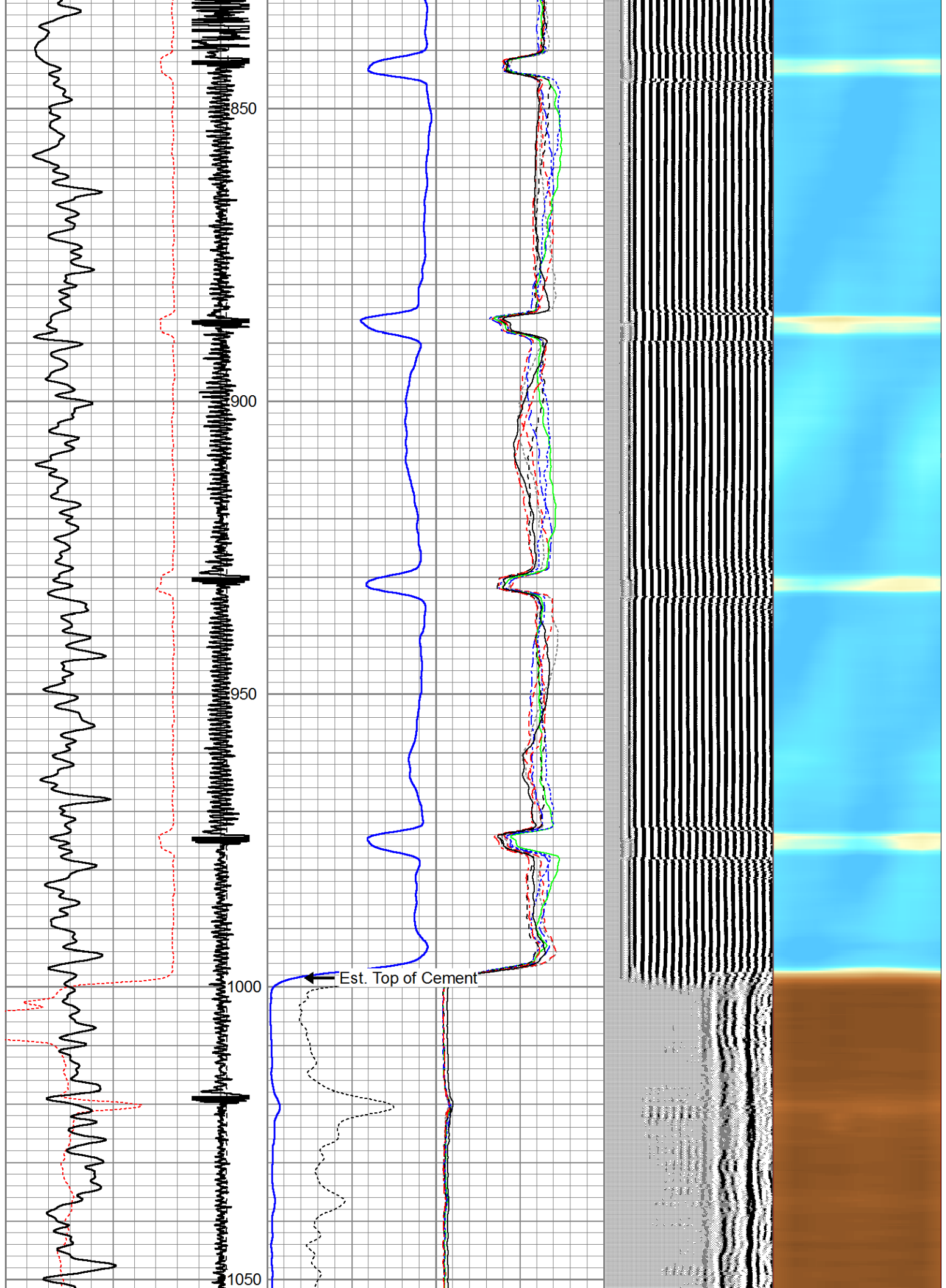
325	TT (usec)	225	LTEN	0	Amplitude (mV)	100	-5	AMPS2	150	200	VDL	1200	Cement Map
0	GR (GAPI)	200	(lb)	0	Amplified Amplitude	10	-5	AMPS3	150				1
			CCL <sup>000</sup>	0	(mV)	10	-5	AMPS4	150				100
							-5	AMPS5	150				
							-5	AMPS6	150				
							-5	AMPS7	150				
							-5	AMPS8	150				
							-5	AMPS1	150				

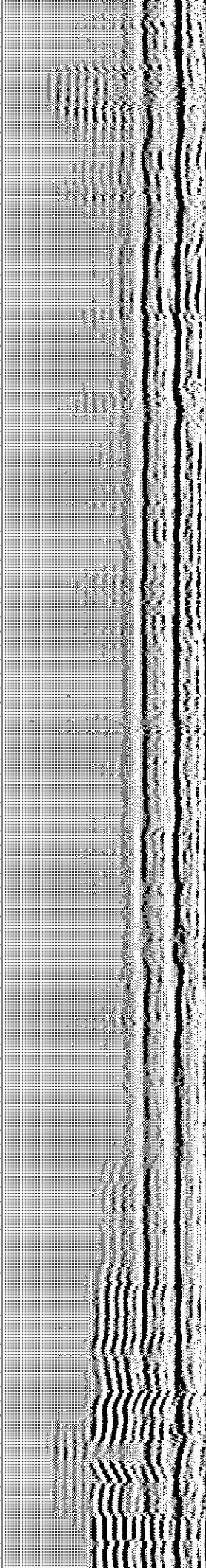
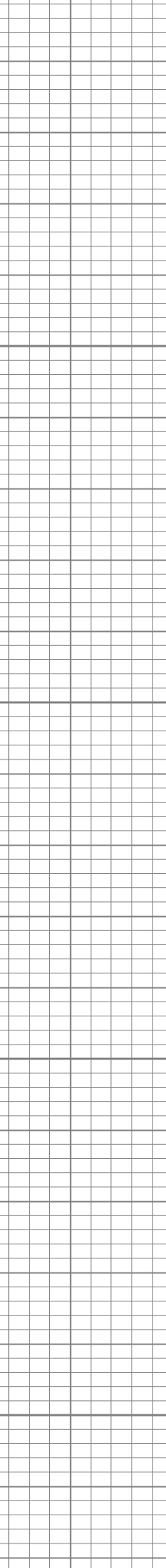
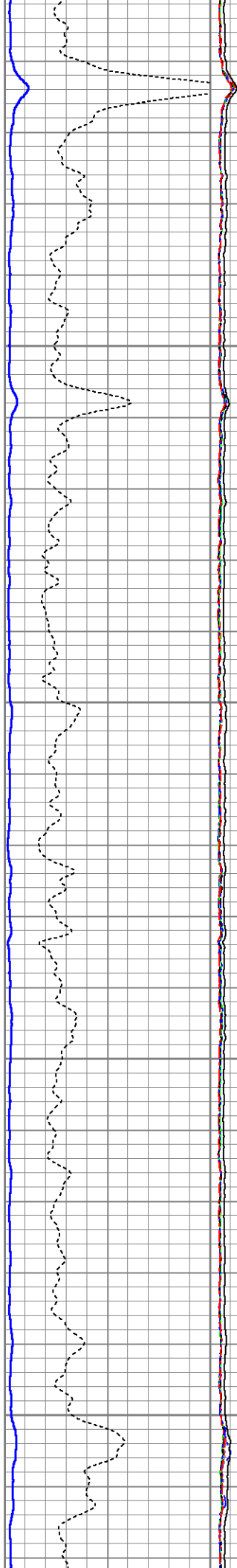
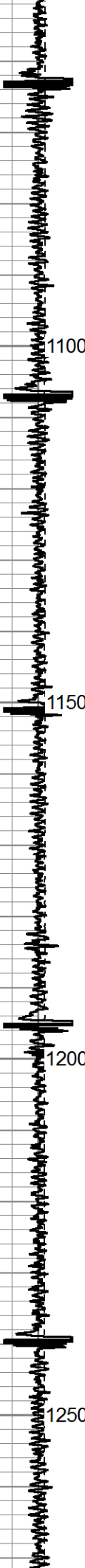
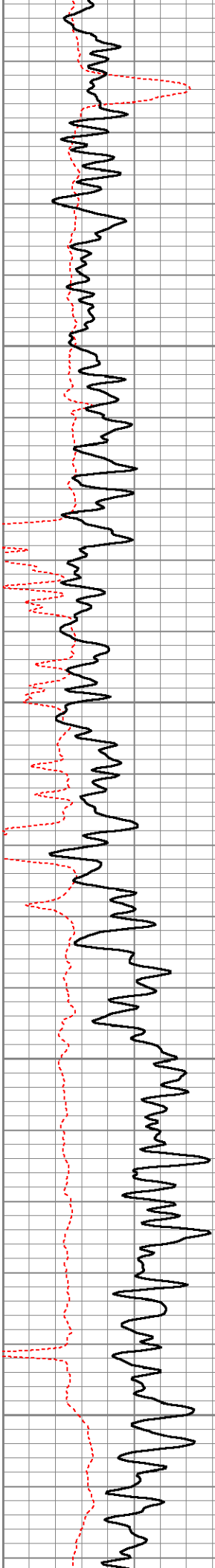


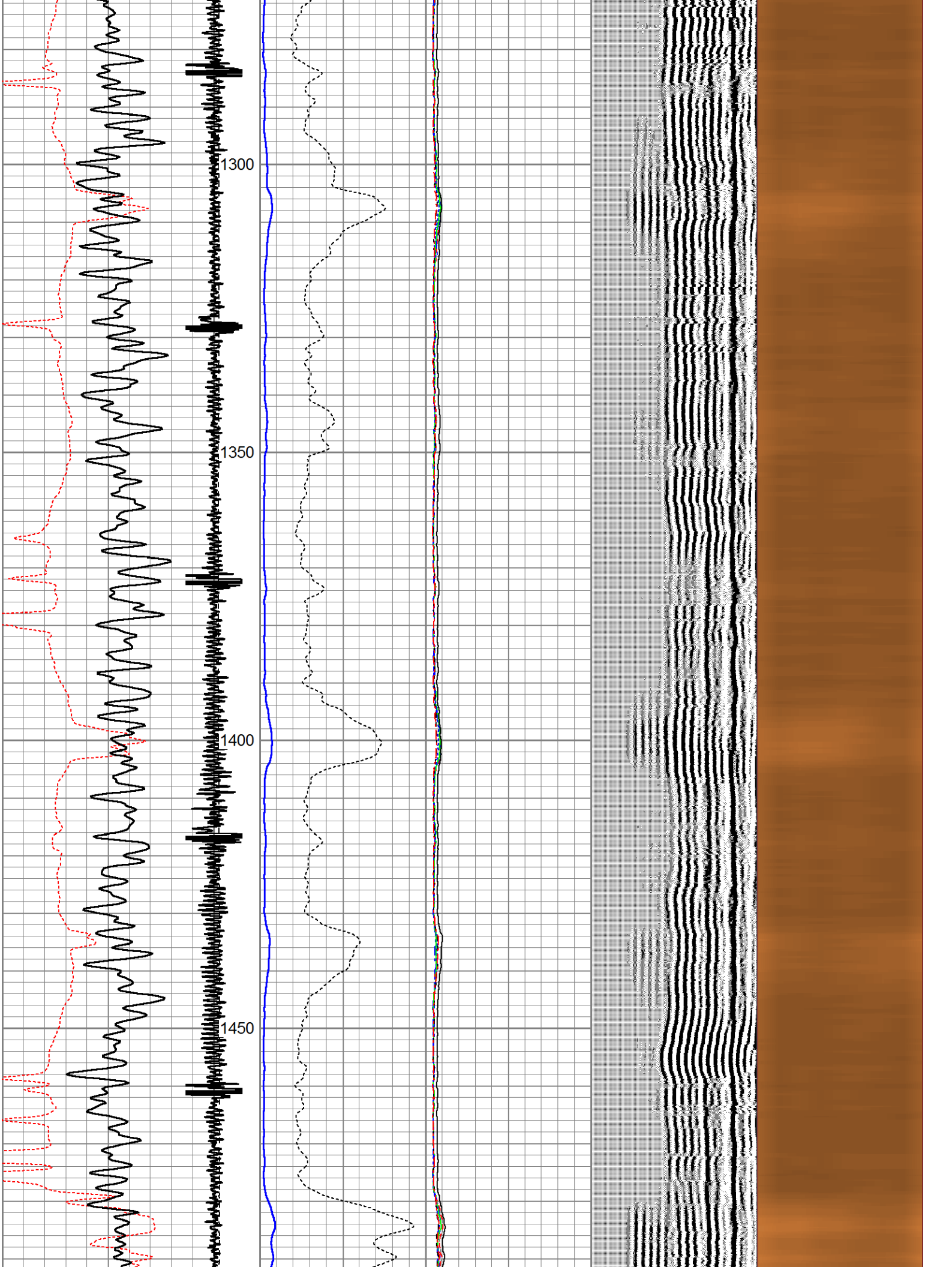


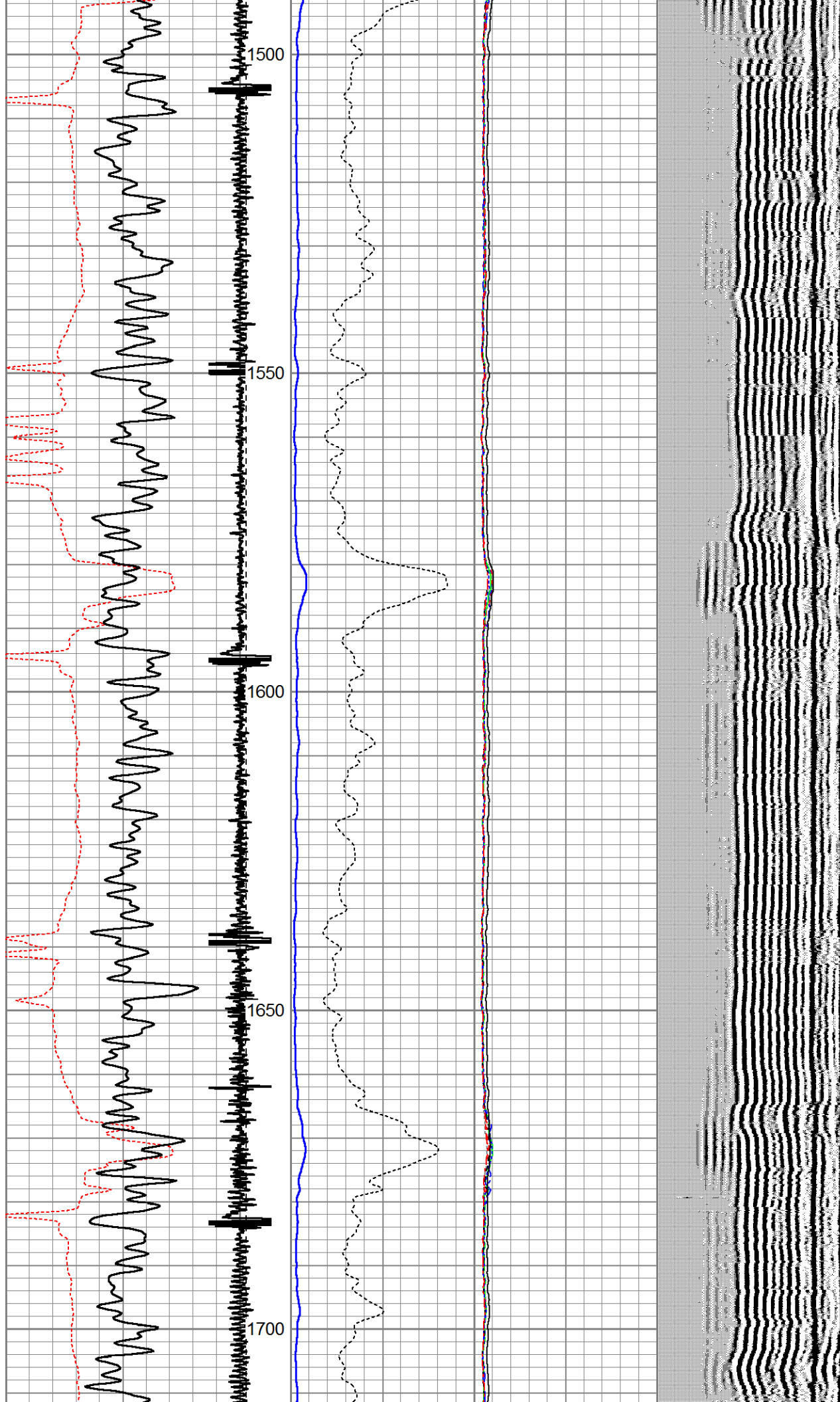




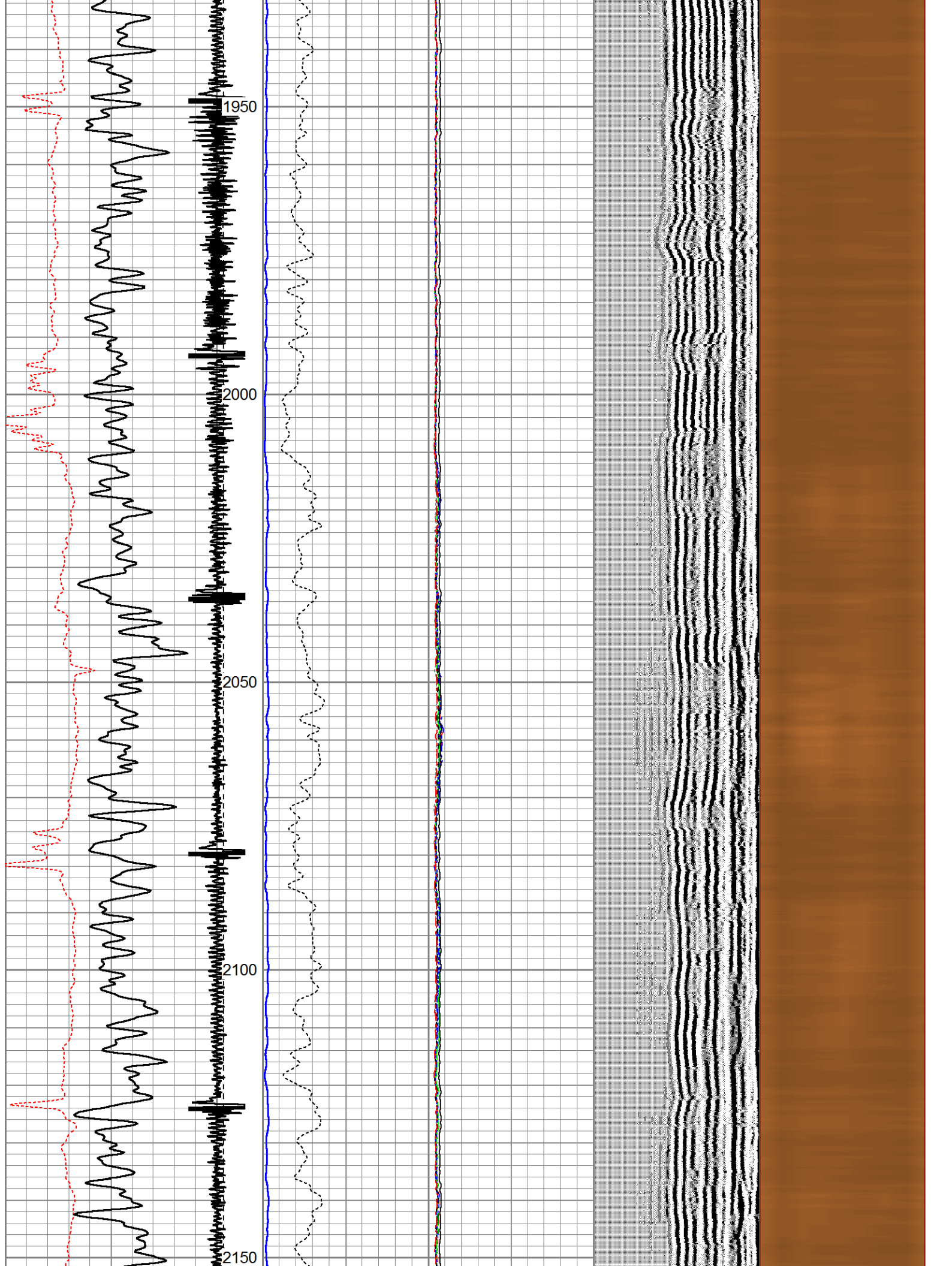


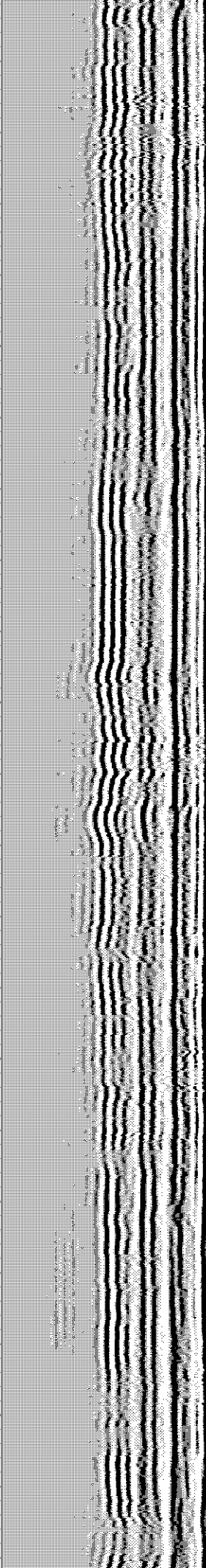
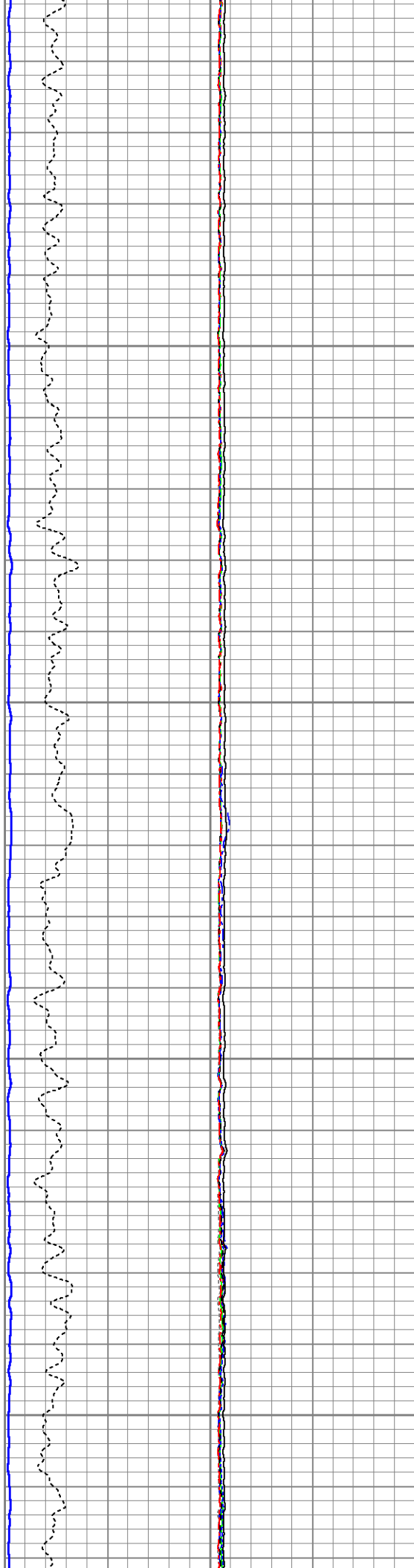
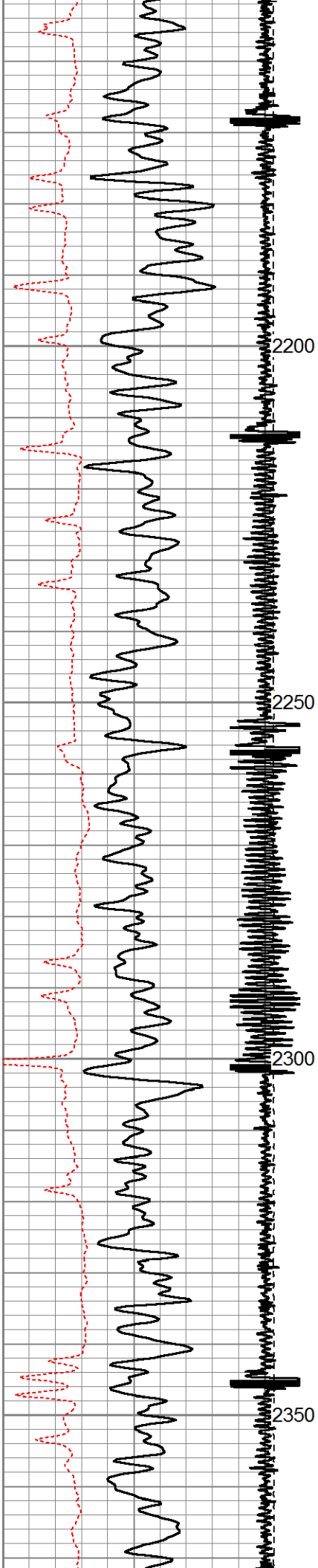


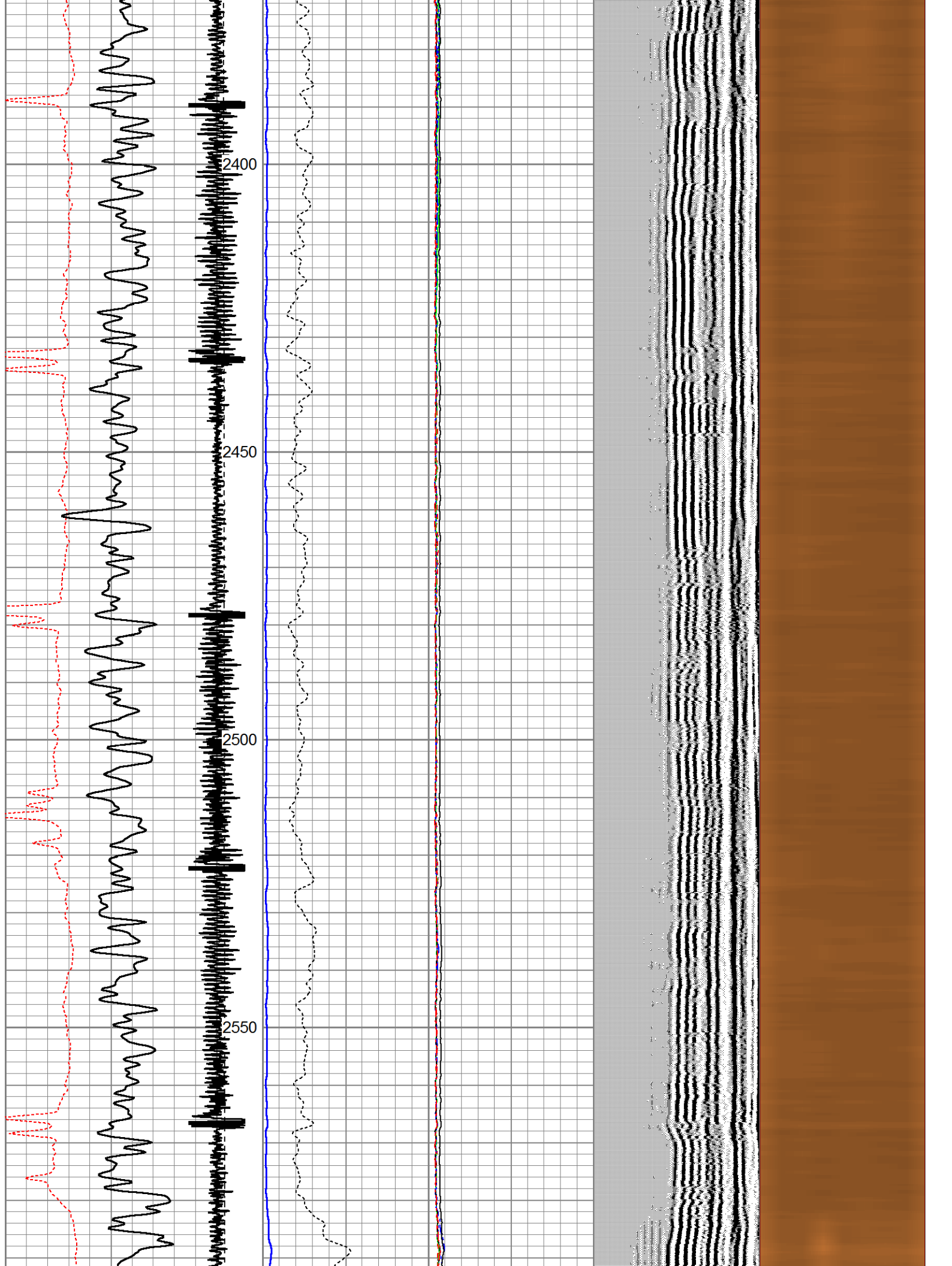


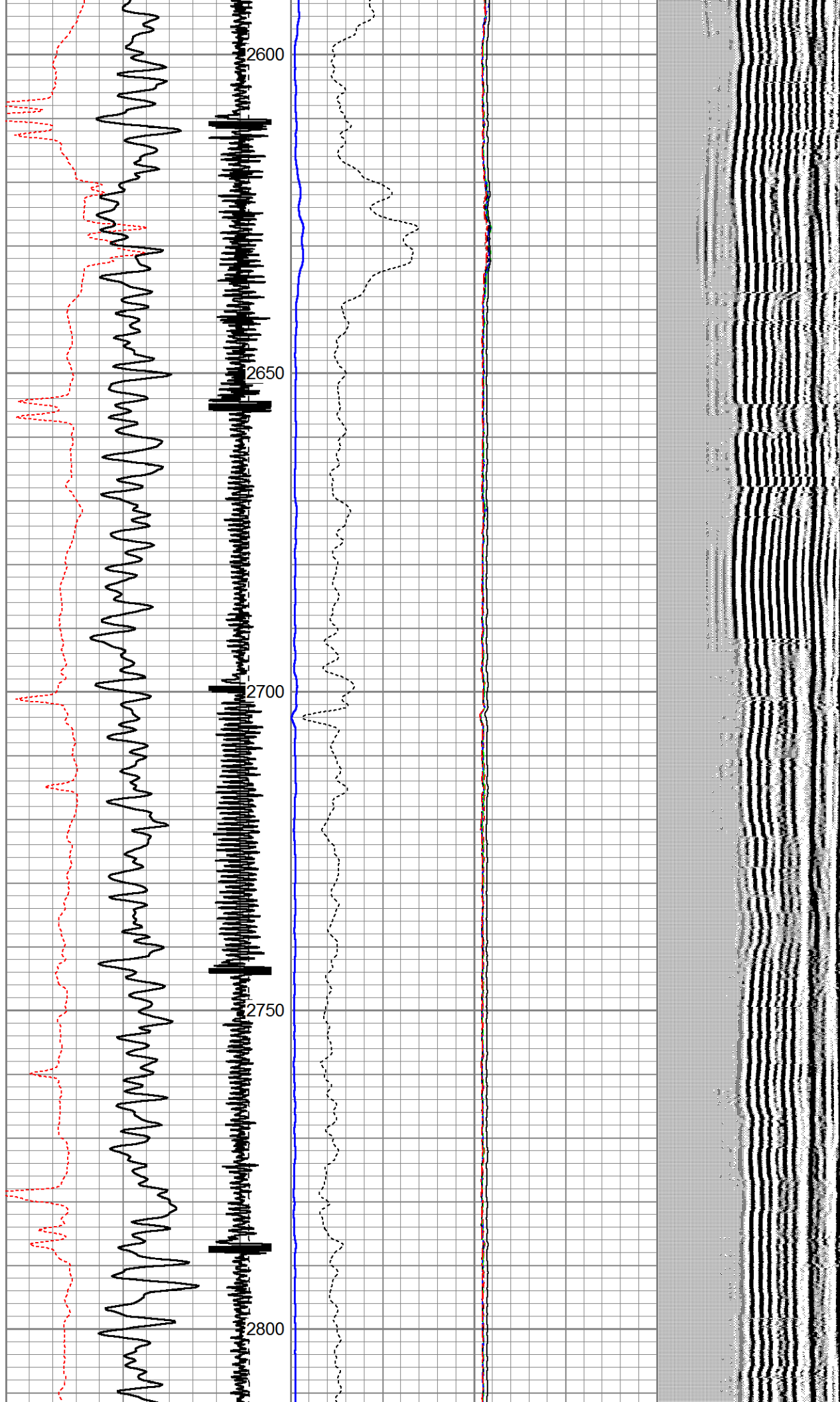


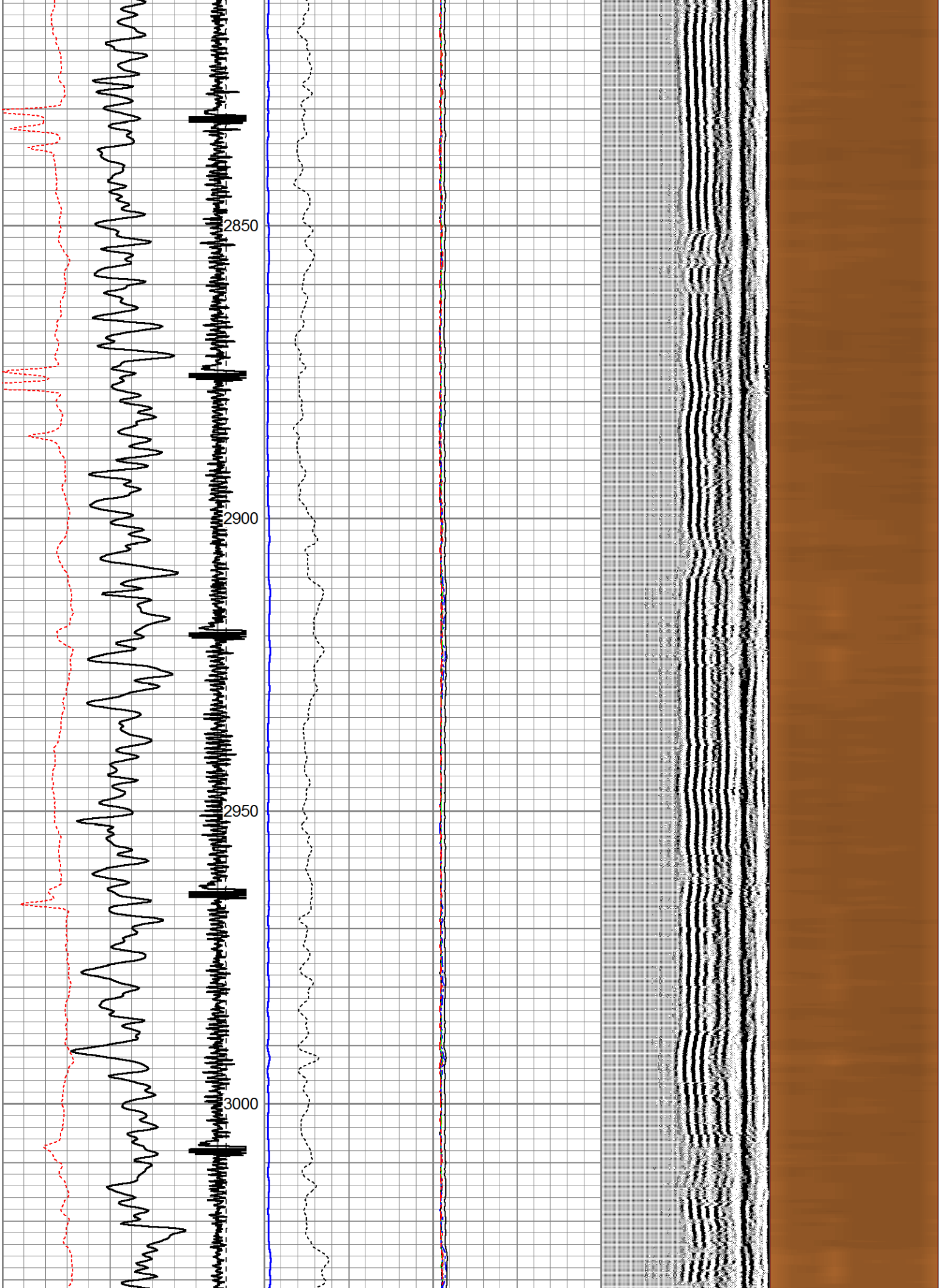


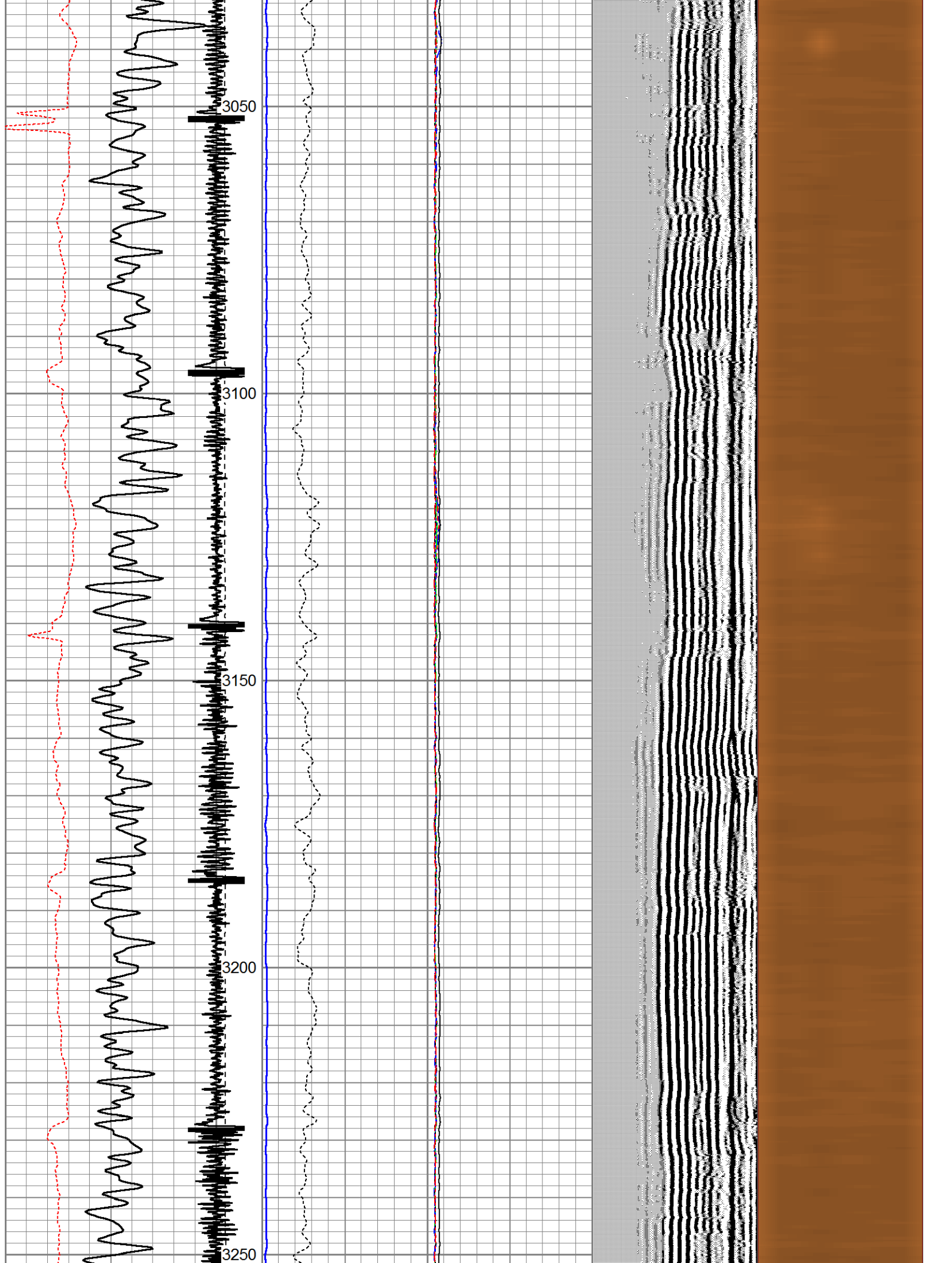


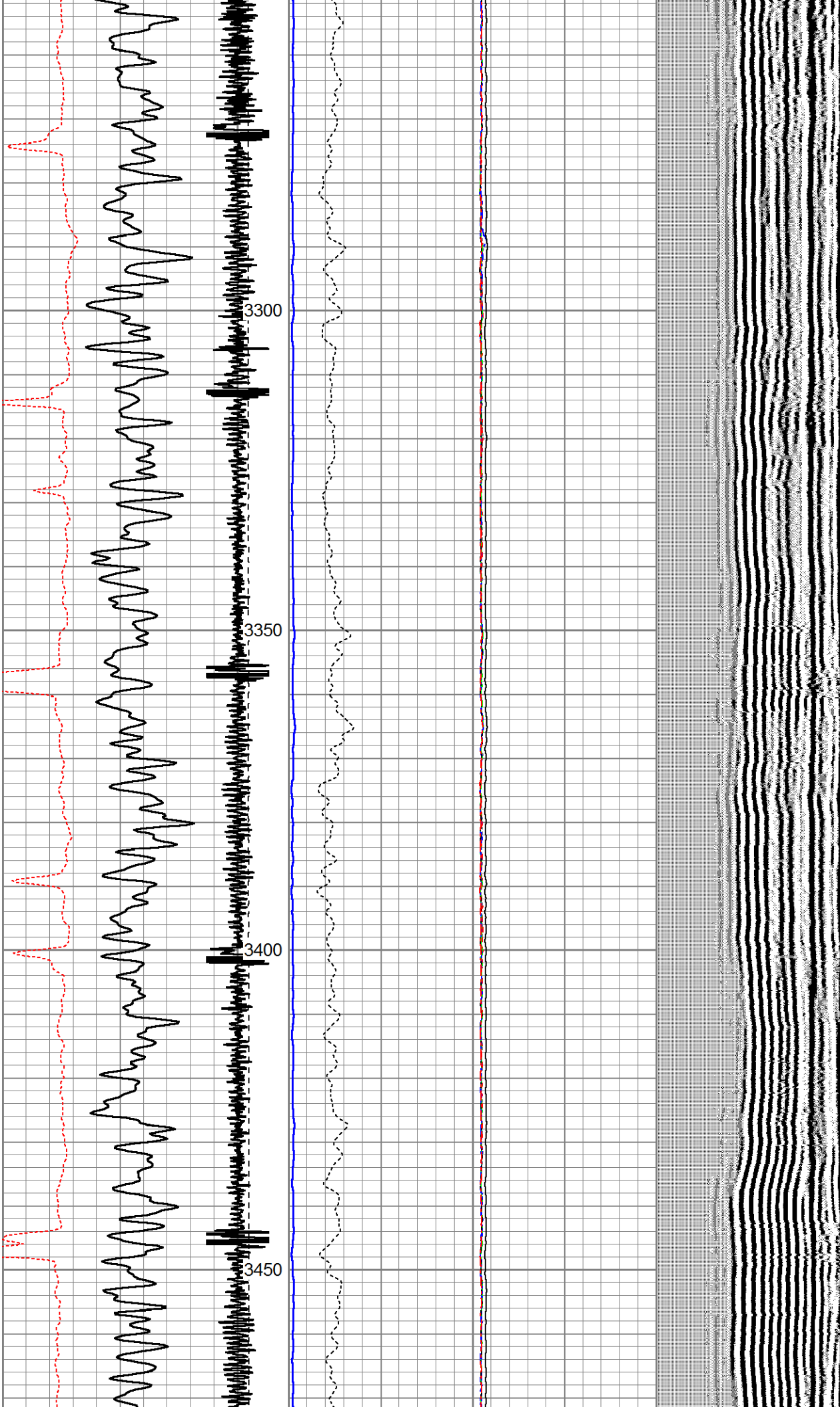


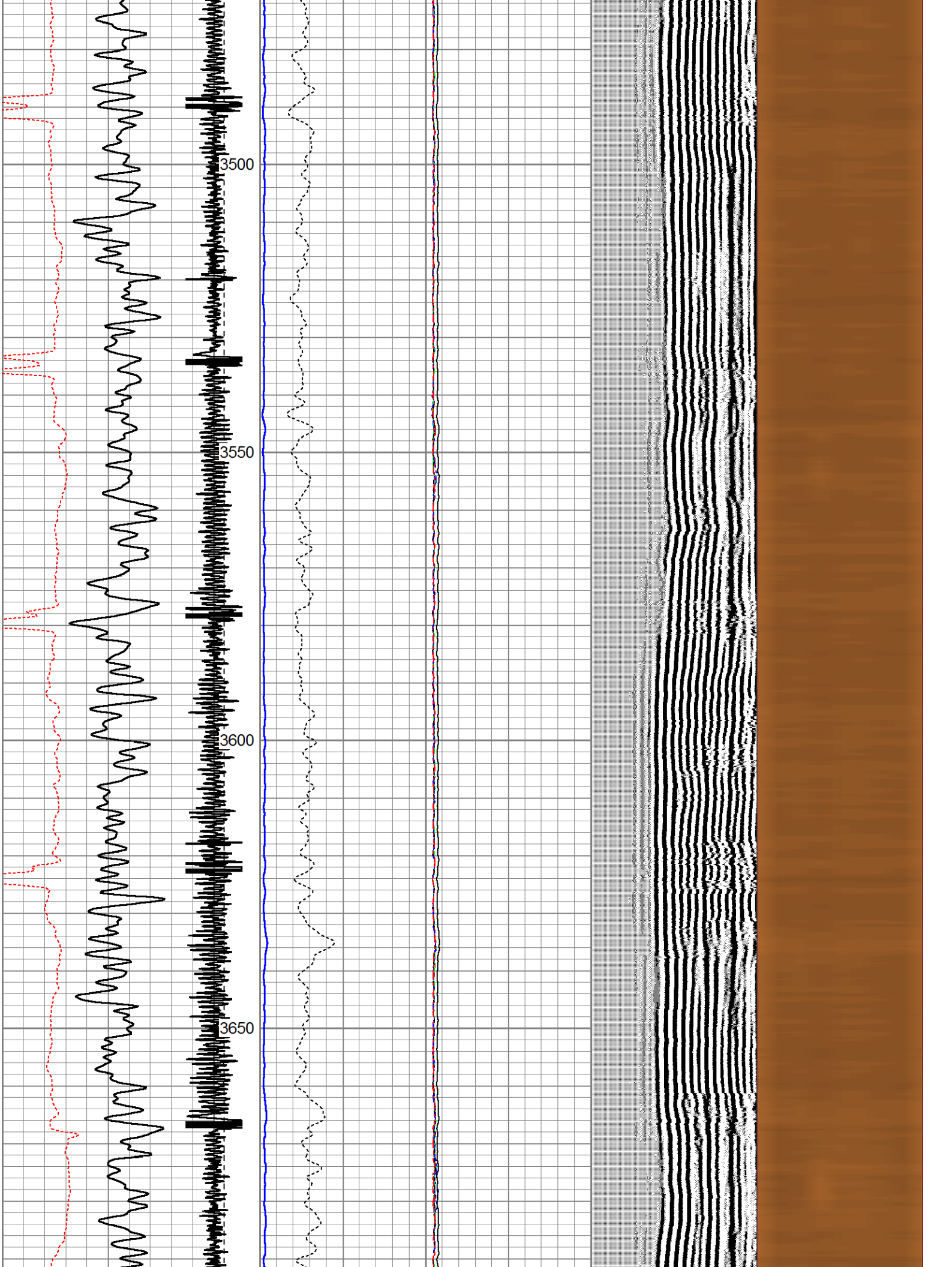


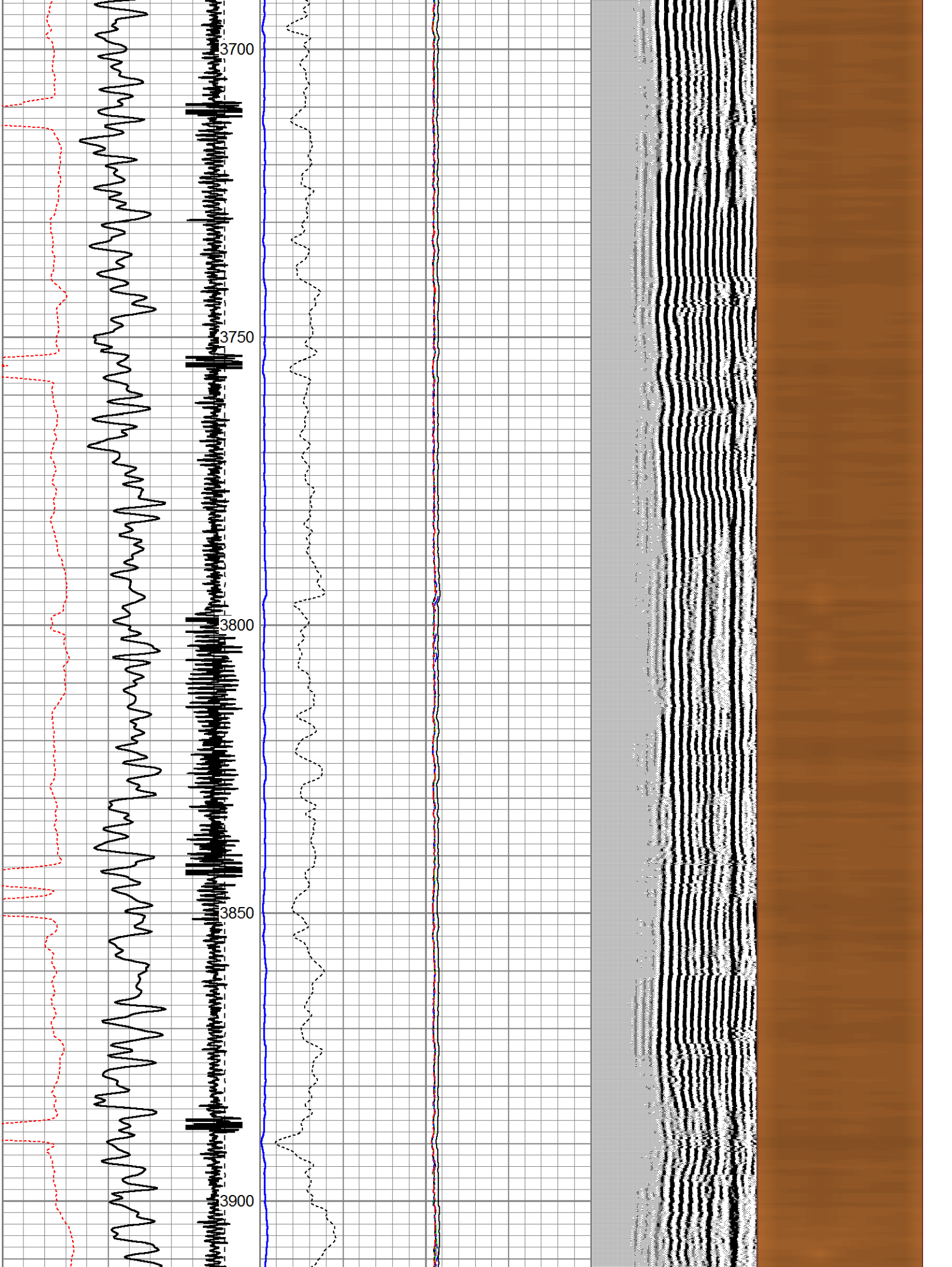


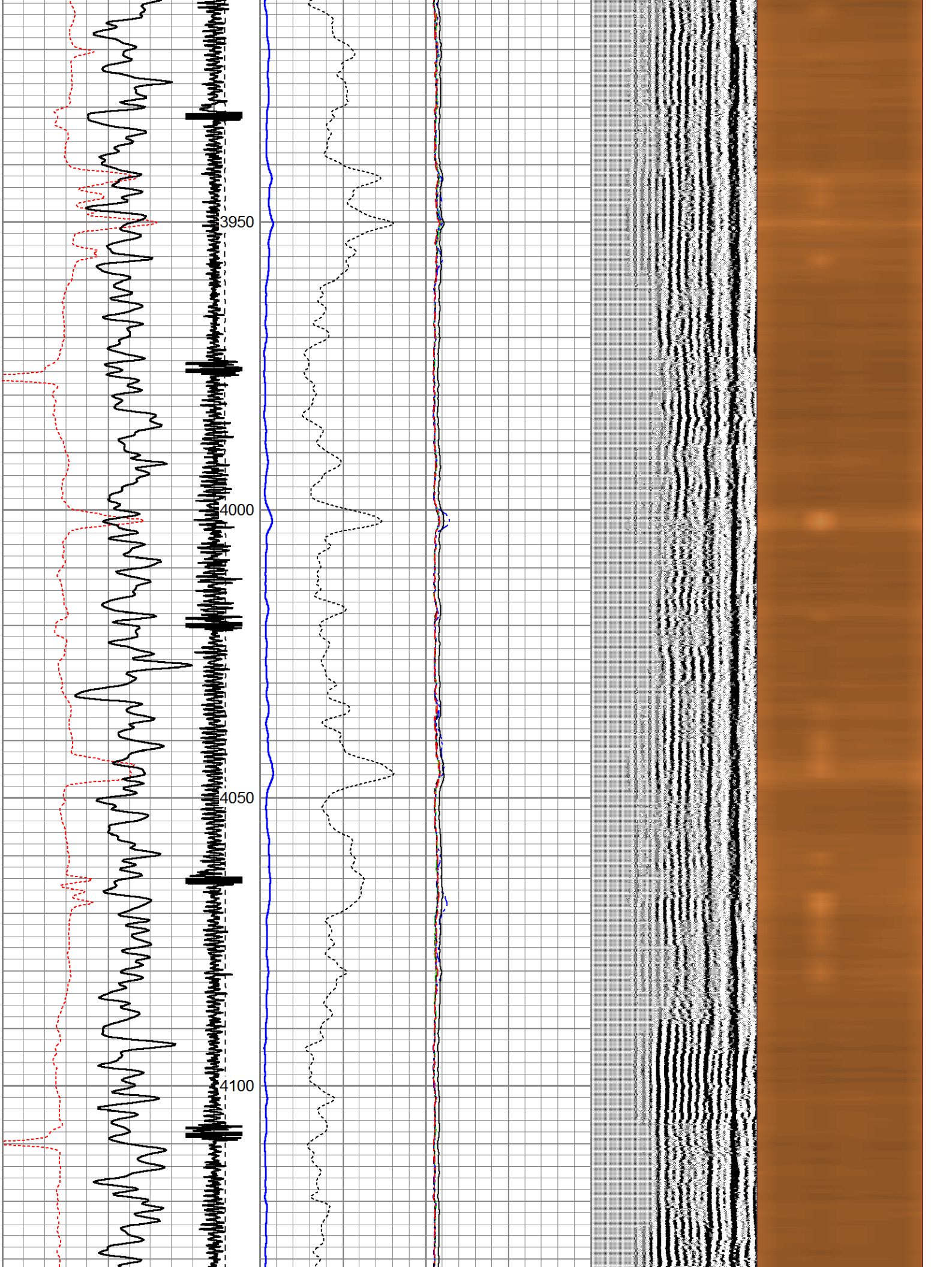


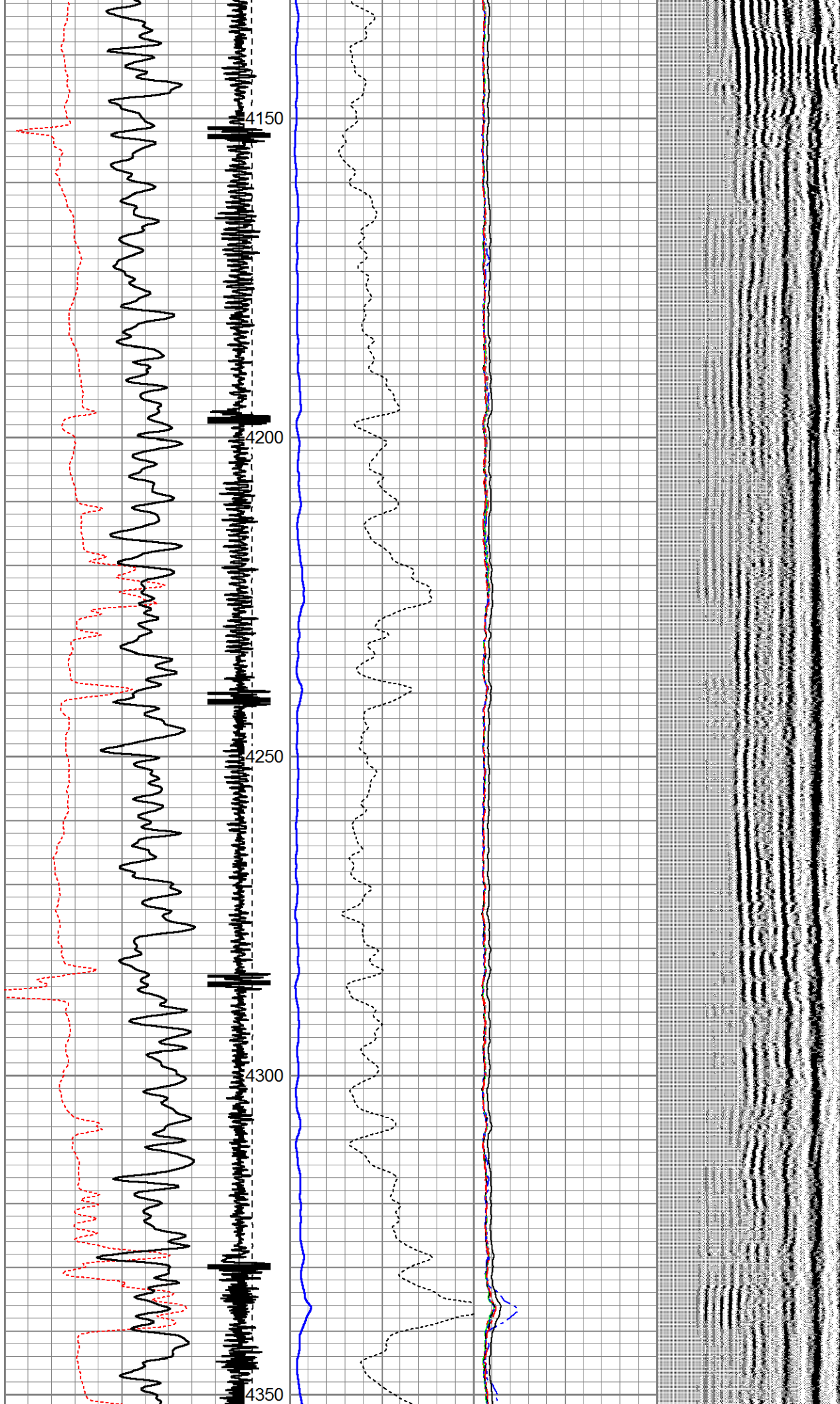


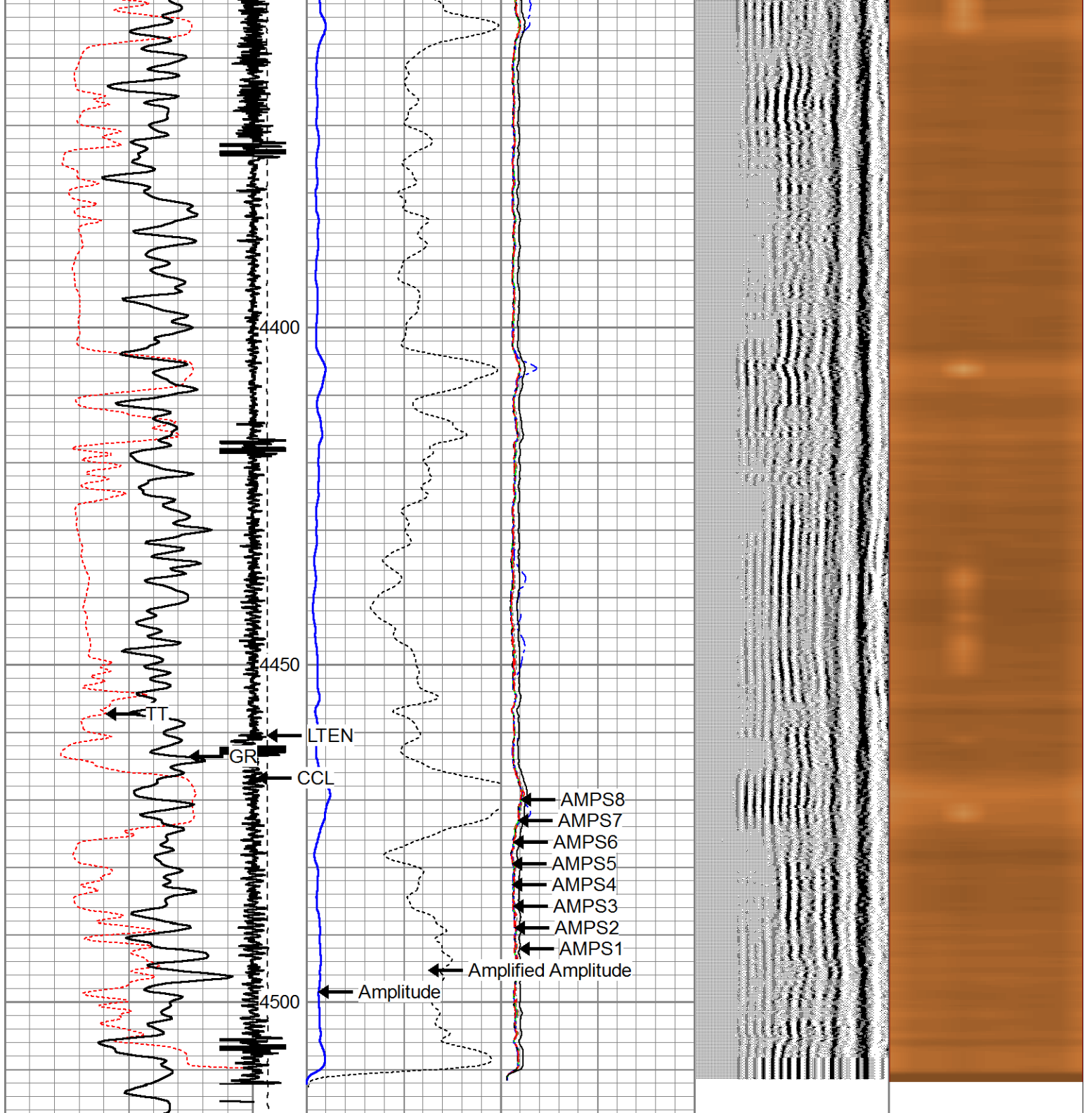












325	TT (usec)	225	LTEN	0	Amplitude (mV)	100	-5	AMPS2	150	200	VDL	1200	Cement Map
0	GR (GAPI)	200	(lb)	0	Amplified Amplitude	(mV)	10	-5	AMPS3	150	1	100	
			CCL	0				-5	AMPS4	150			
								-5	AMPS5	150			
								-5	AMPS6	150			
								-5	AMPS7	150			
								-5	AMPS8	150			
								-5	AMPS1	150			



Well	DRY CREEK 23-27
Field	WATTENBERG
County	WELD
State	COLORADO