



RADIAL CEMENT BOND LOG

Company	ANADARKO PETROLEUM CORP.	Company	ANADARKO PETROLEUM CORP.
Well	DRY CREEK 23-27	Well	DRY CREEK 23-27
Field	WATTENBERG	Field	WATTENBERG
County	WELD	County	WELD
State	COLORADO	State	COLORADO

Location:	API # : 05-123-31593	Other Services
	SE SE	NONE
Permanent Datum	SEC 27 TWP 1N RGE 67W	Elevation
Log Measured From	GROUND LEVEL	5044'
Drilling Measured From	KELLY BUSHING	K.B. 5059'
		D.F. 5059'
		G.L. 5044'

Date	04 JUNE 2019
Run Number	TWO
Depth Driller	8155'
Depth Logger	4500'
Bottom Logged Interval	4500'
Top Log Interval	SURFACE
Open Hole Size	7.875"
Type Fluid	WATER
Density / Viscosity	~8.3#
Max. Recorded Temp.	
Estimated Cement Top	998'
Time Well Ready	ROA
Time Logger on Bottom	01:15PM
Equipment Number	W-060
Location	WINDSOR, CO
Recorded By	T. HAWLEY
Witnessed By	R. REYES

Borehole Record				Tubing Record			
Run Number	Bit	From	To	Size	Weight	From	To
1	12.25"	0'	1195'				

Record	Size	Wgt/Ft	Top	Bottom
Casing Record	8.62"	24#	0'	1195'
Surface String				
Prot. String	4.5"	11.6#	0'	8155'
Production String				
Liner				


<<< Fold Here >>>

All interpretations are opinions based on inferences from electrical or other measurements and we cannot and do not guarantee the accuracy or correctness of any interpretation, and we shall not, except in the case of gross or willful negligence on our part, be liable or responsible for any loss, costs, damages, or expenses incurred or sustained by anyone resulting from any interpretation made by any of our officers, agents or employees. These interpretations are also subject to our general terms and conditions set out in our current Price Schedule.

Comments

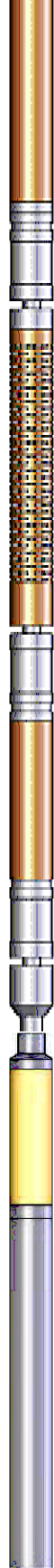
THANK YOU FOR USING CUTTERS WIRELINE

DATE OF SHOP CALIBRATION: 10/18
LOG RAN UNDER OPSI
FREE PIPE CALIBRATION @ 512'

Sensor	Offset (ft)	Schematic	Description	Len (ft)	OD (in)	Wt (lb)
						

WVF3FT
 WVFCAL
 WVFS1
 WVFS2
 WVFS3
 WVFS4
 WVFS5
 WVFS6
 WVFS7
 WVFS8
 WVF5FT

8.19
 8.19
 8.19
 8.19
 8.19
 8.19
 8.19
 8.19
 8.19
 8.19
 7.19



RBT-Probe (060112_55)
 Probe 2.75" Radii Bond Tool

8.75

2.75

90.00

CCL

3.50

GR-Probe (060109)
 Probe 2.75" 4 Channel Pulse

4.00

2.75

30.00

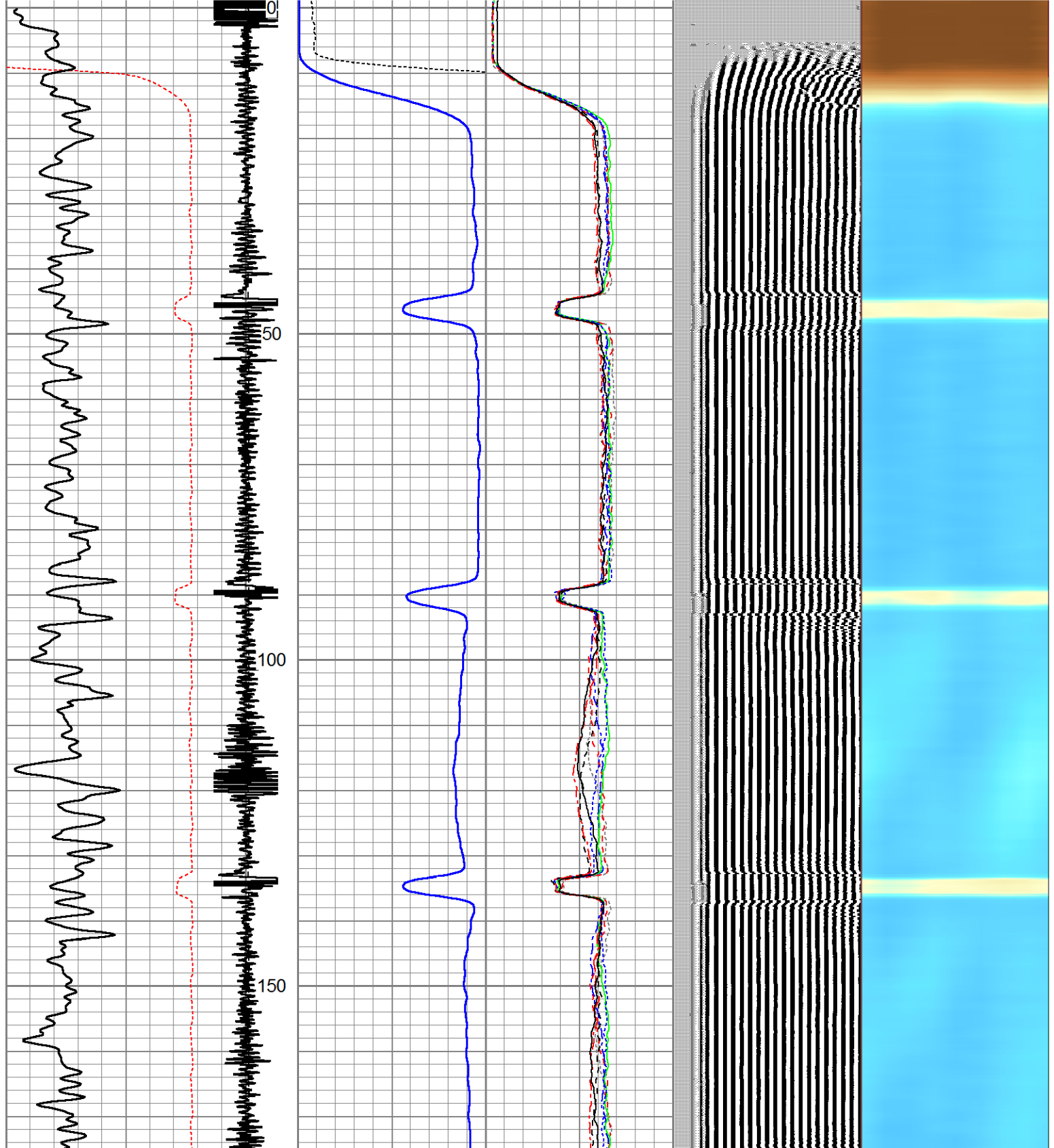
GR

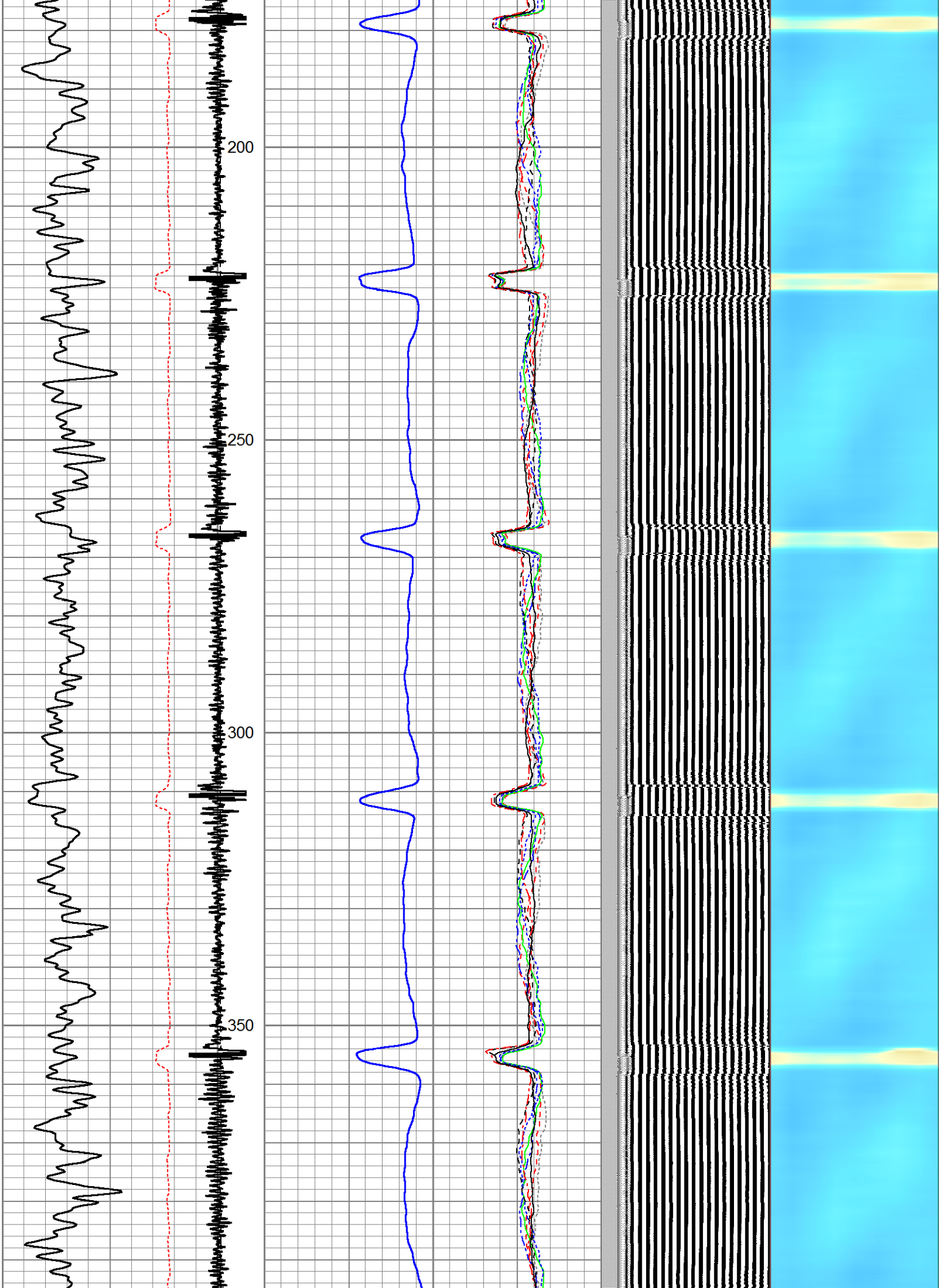
1.00

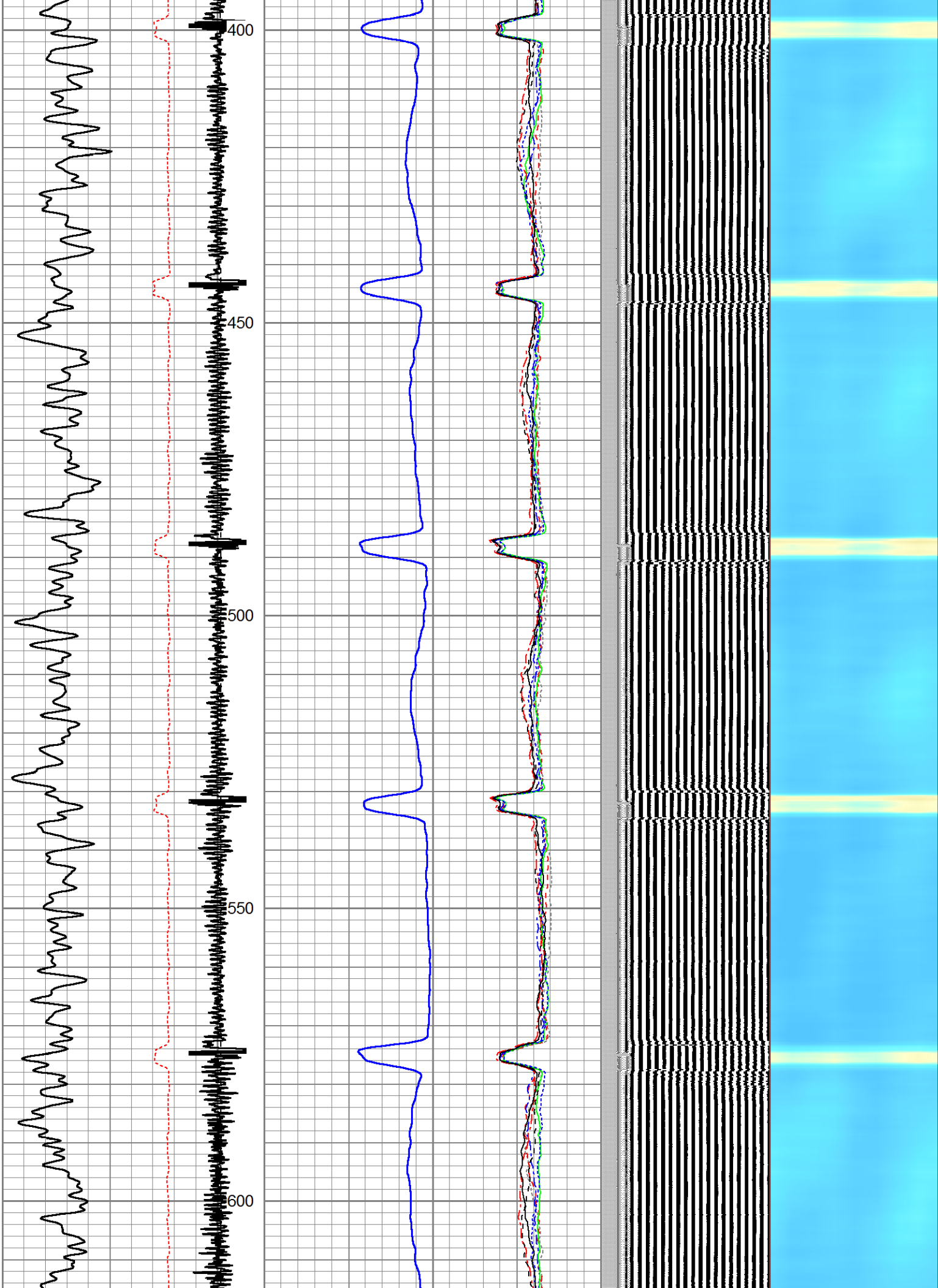
Dataset: dry creek 23-27.db: field/well/run1/pass234
 Total Length: 12.75 ft
 Total Weight: 120.00 lb
 O.D.: 2.75 in

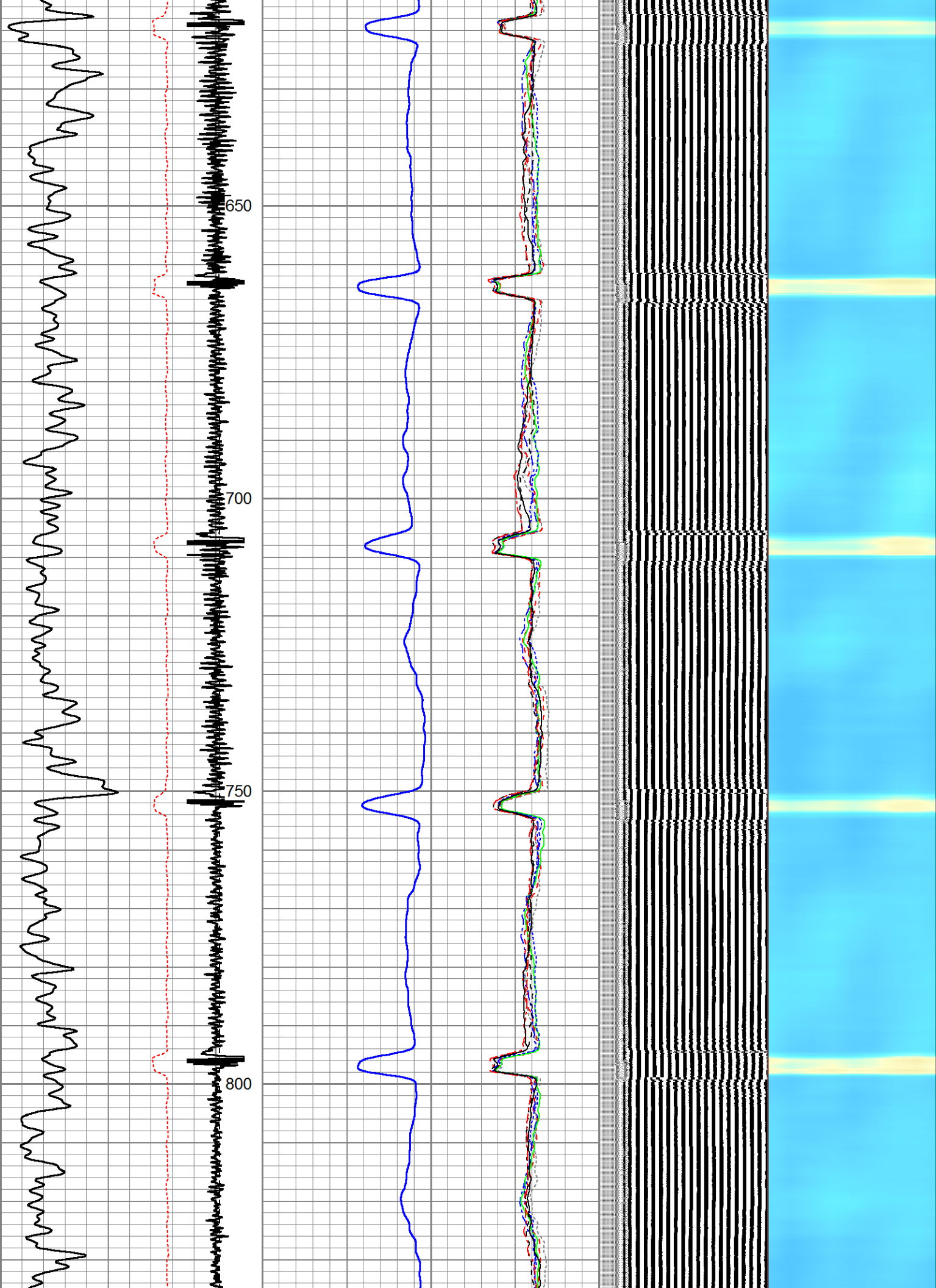
Database File: dry creek 23-27.db
 Dataset Pathname: pass234
 Presentation Format: rbl55
 Dataset Creation: Wed Jun 05 02:32:58 2019 by Log 7.0 B1
 Charted by: Depth in Feet scaled 1:240

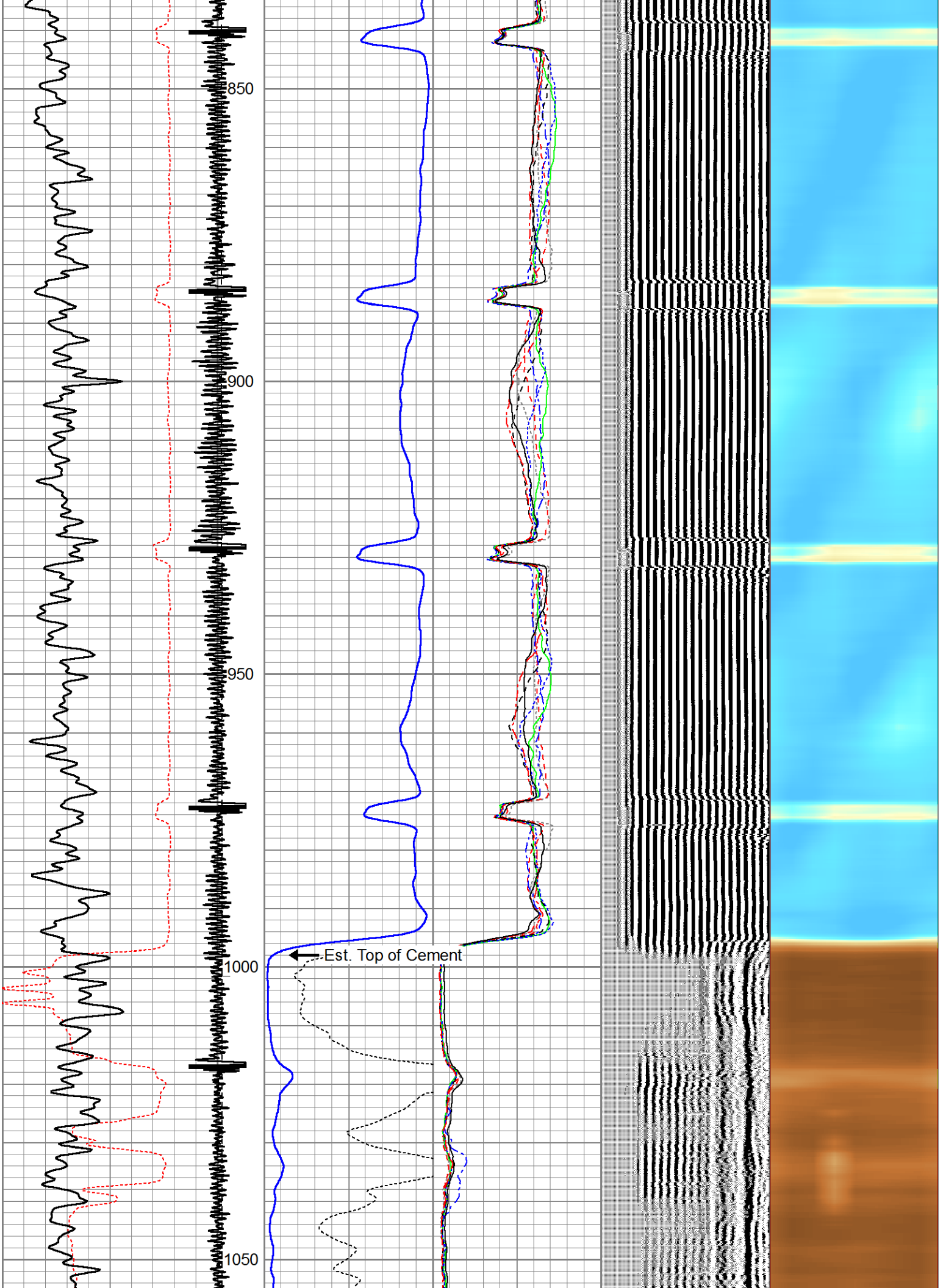
325	TT (usec)	225	LTEN	0	Amplitude (mV)	100	-5	AMPS2	150	200	VDL	1200	Cement Map
0	GR (GAPI)	200	(lb)	0	Amplified Amplitude	10	-5	AMPS3	150				1
			CCL ⁰⁰⁰	0	(mV)	10	-5	AMPS4	150				100
							-5	AMPS5	150				
							-5	AMPS6	150				
							-5	AMPS7	150				
							-5	AMPS8	150				
							-5	AMPS1	150				

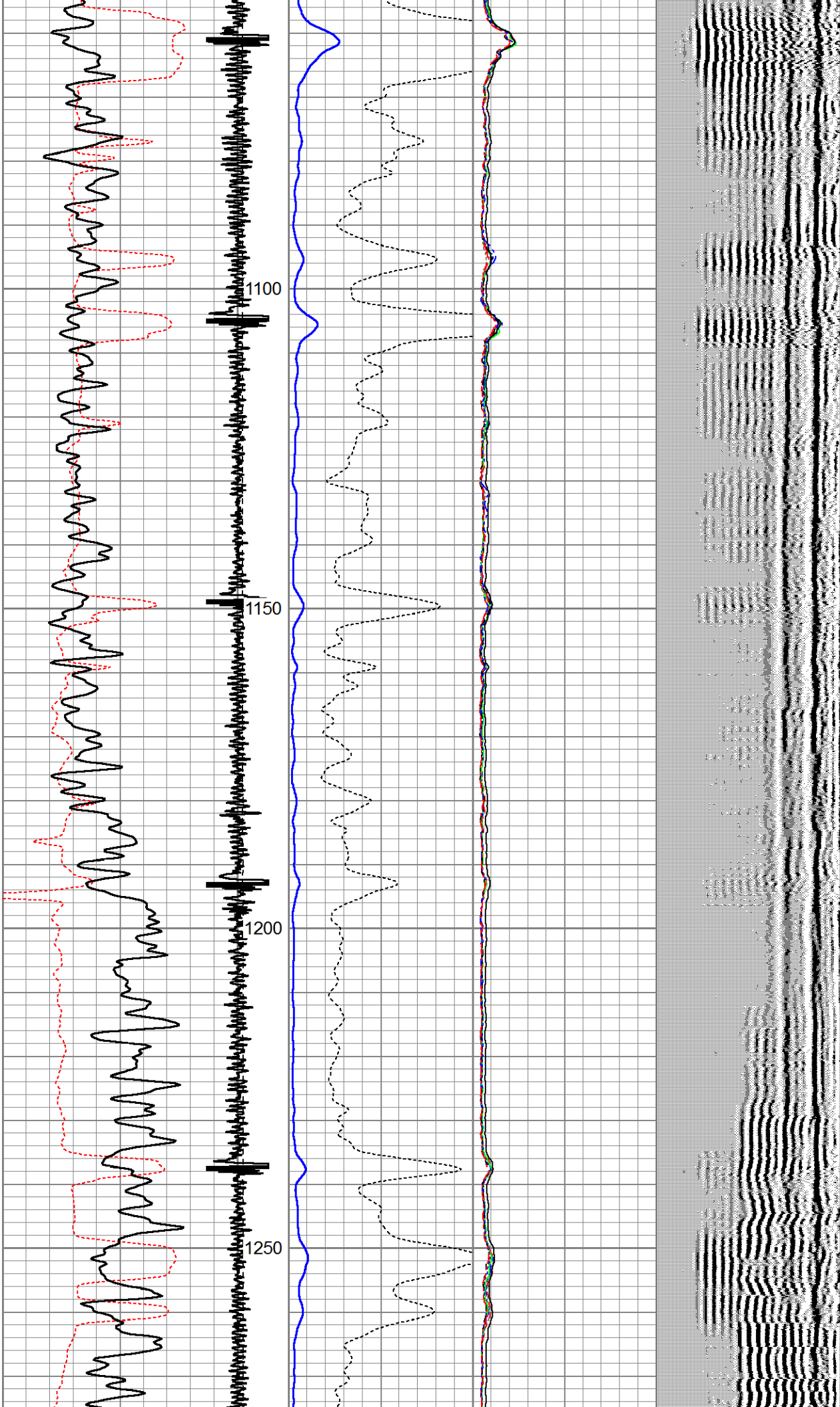


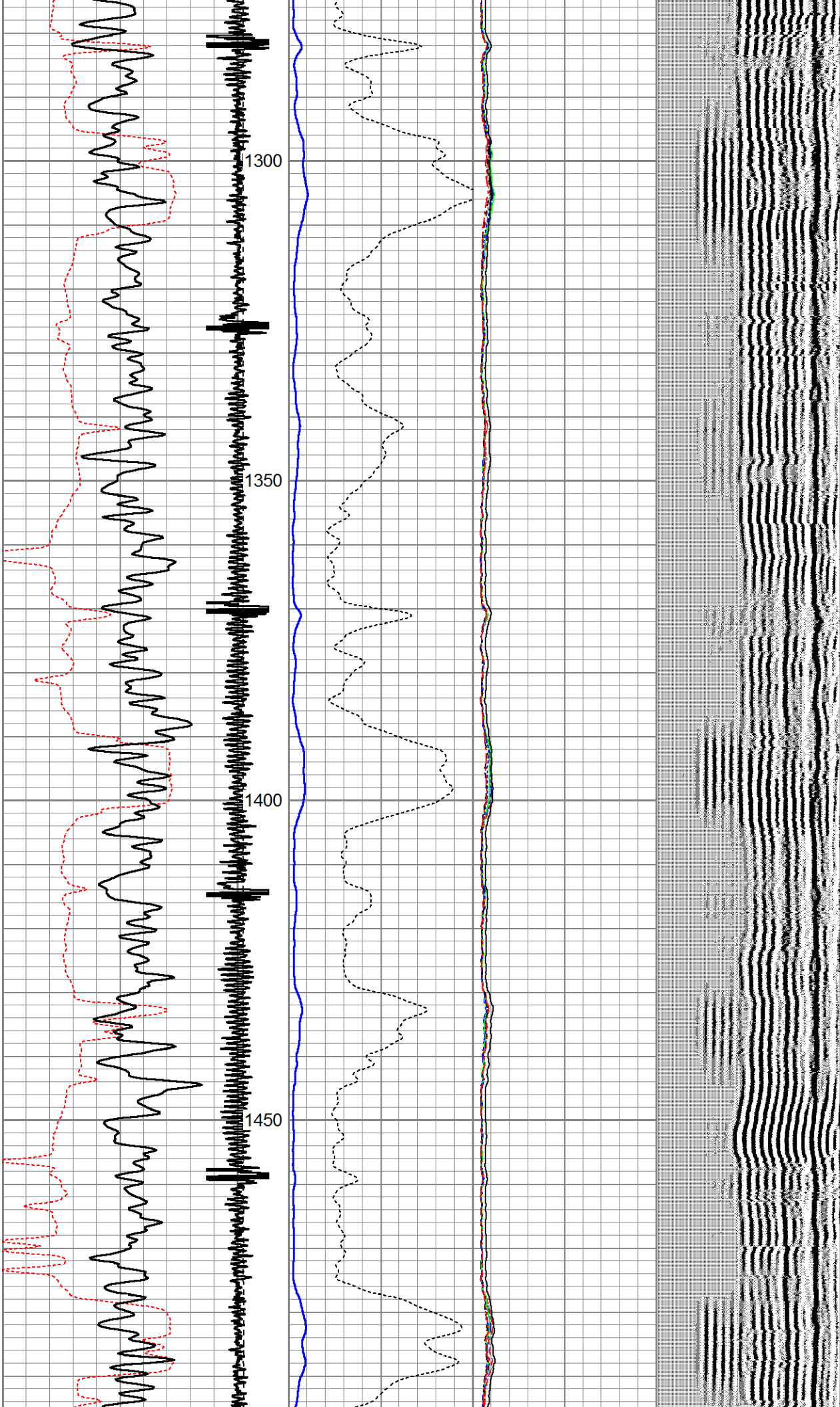


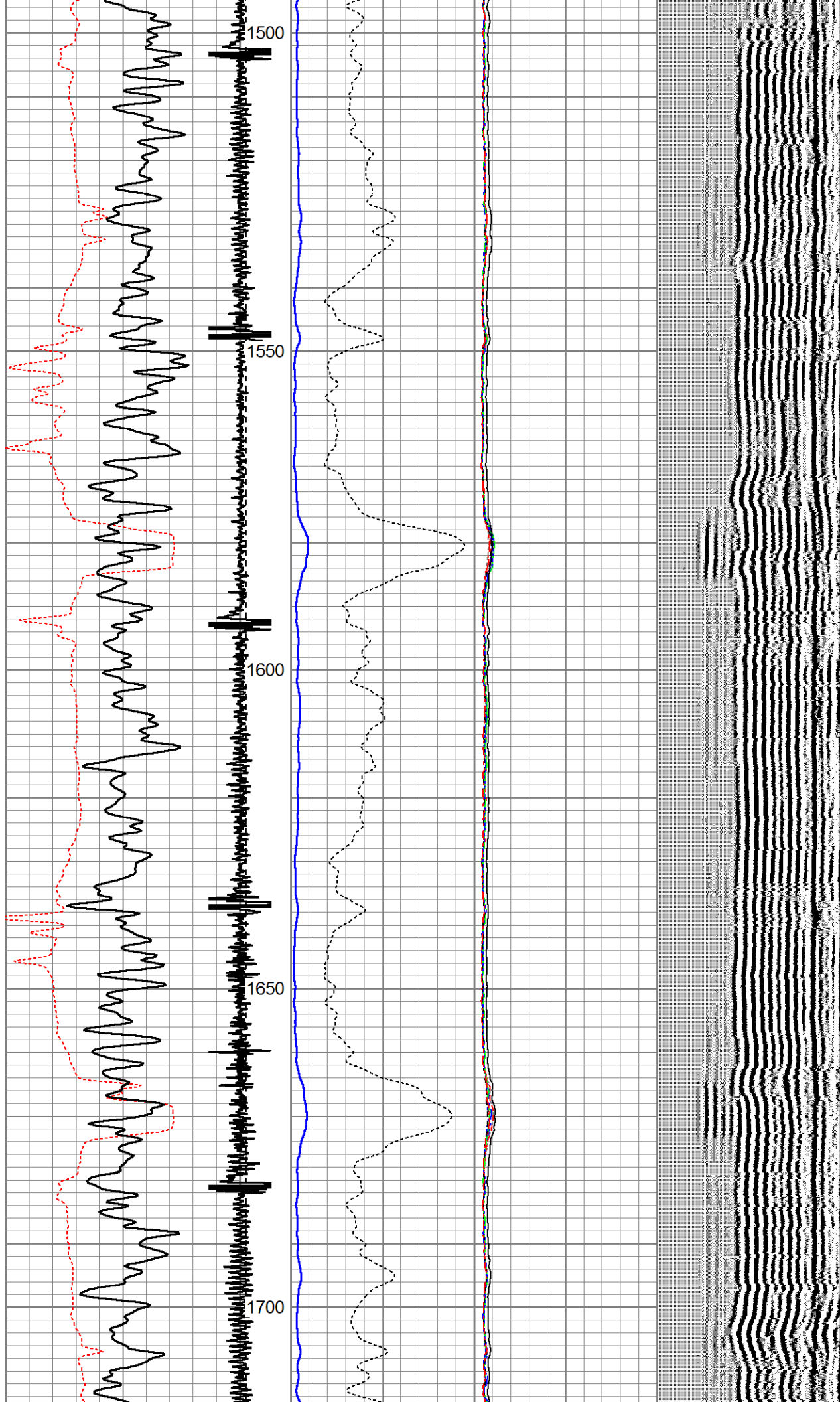


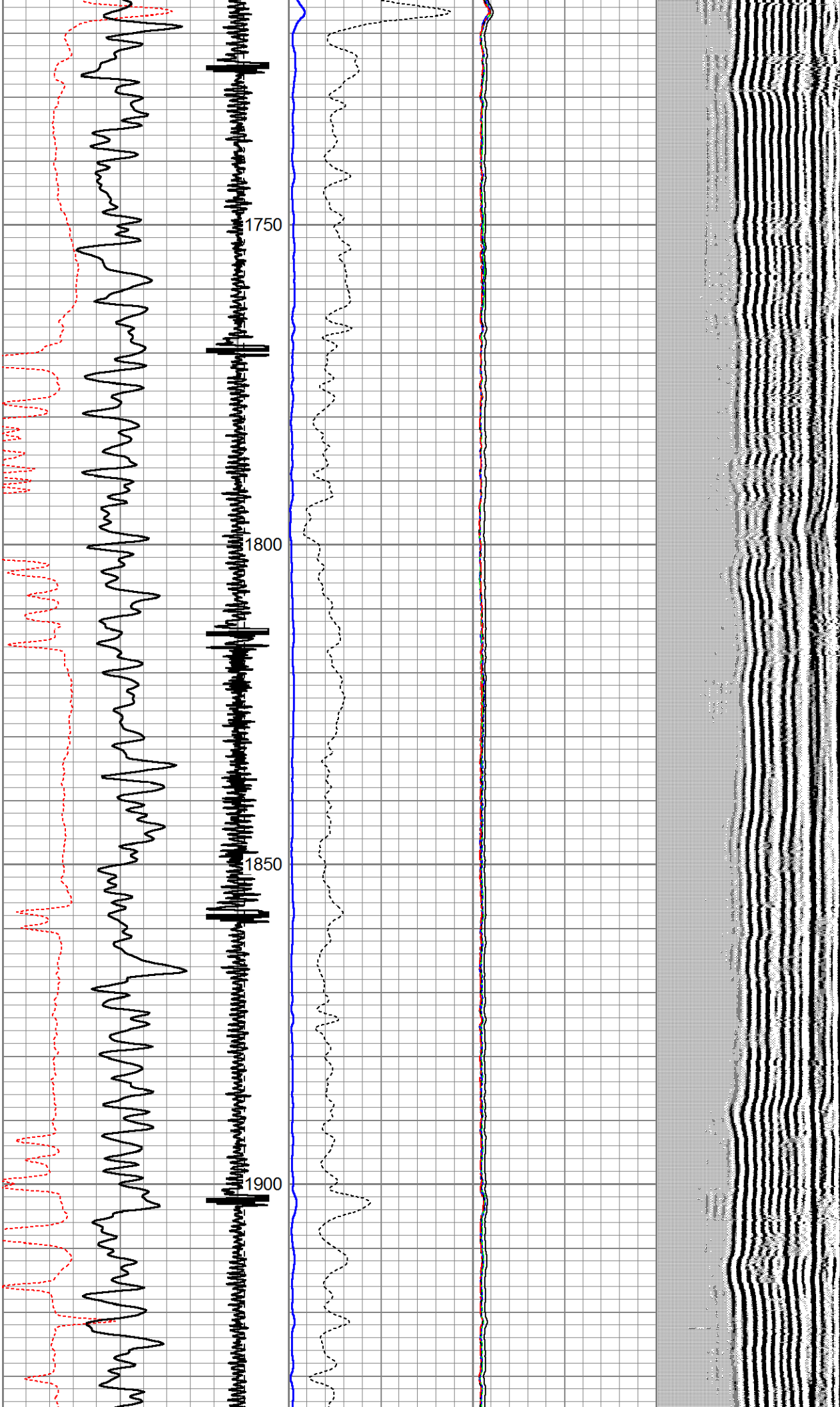


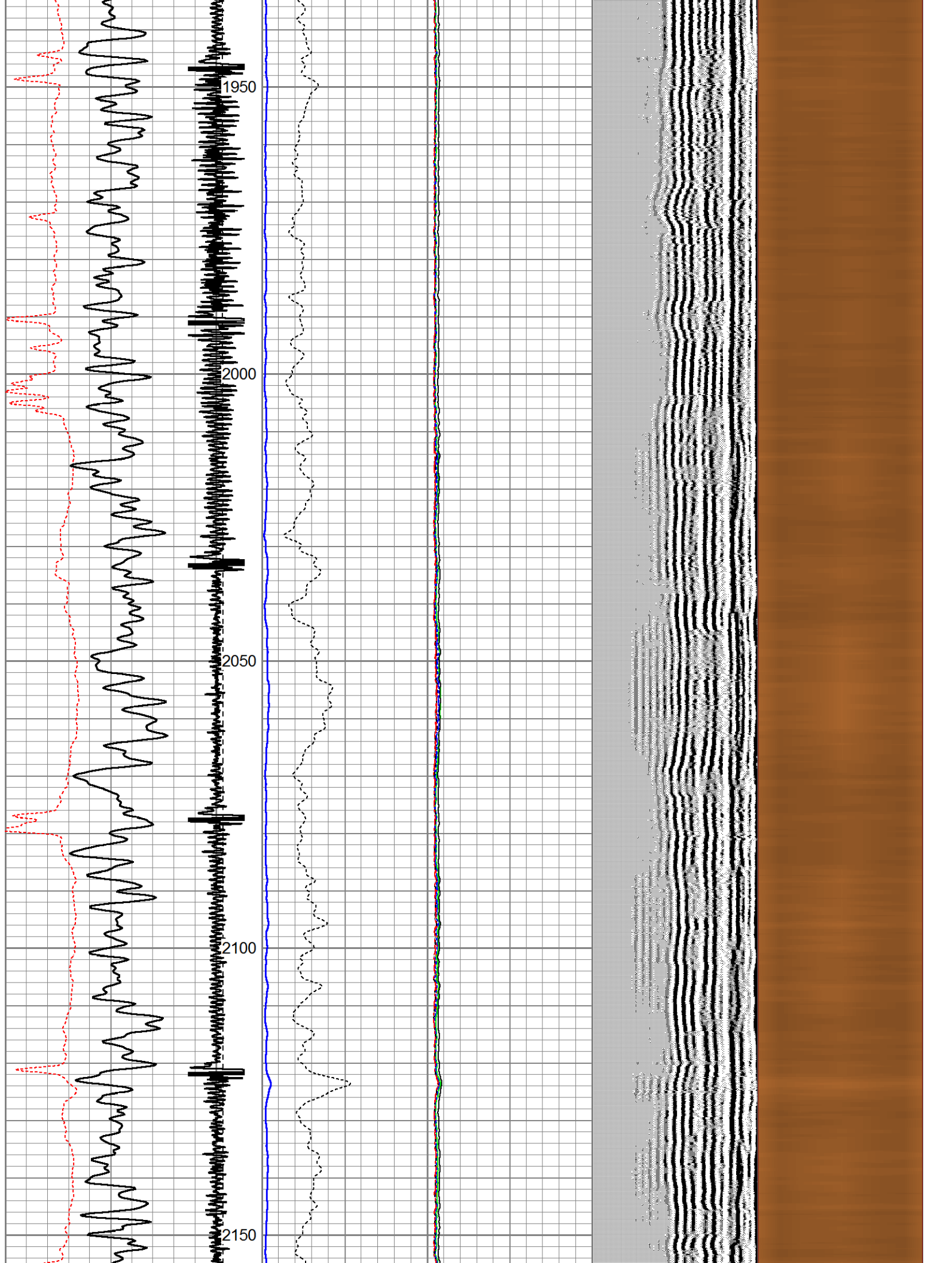


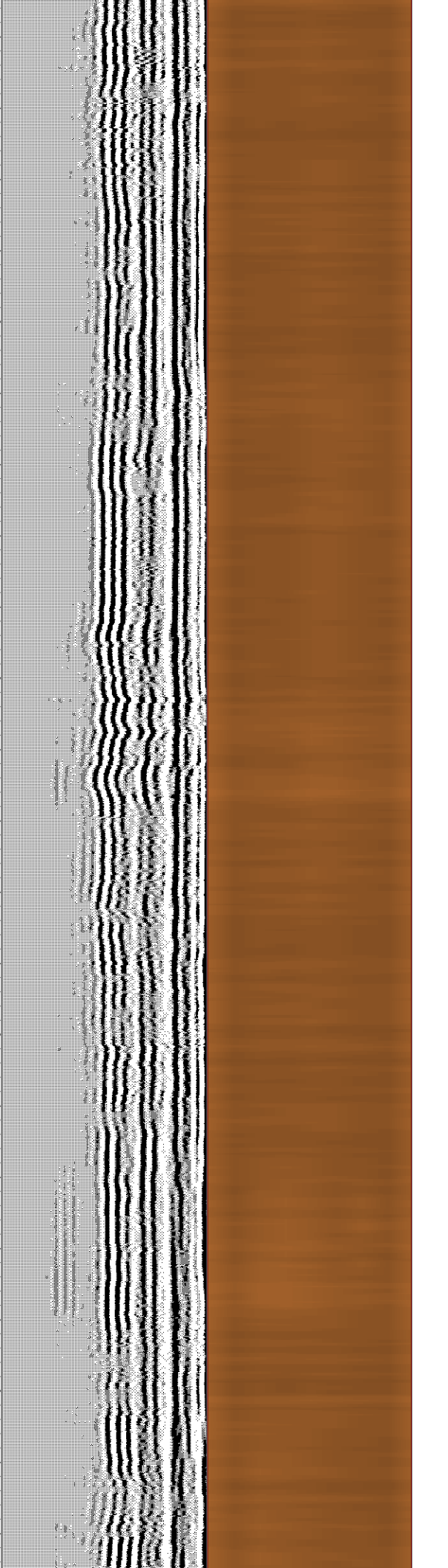
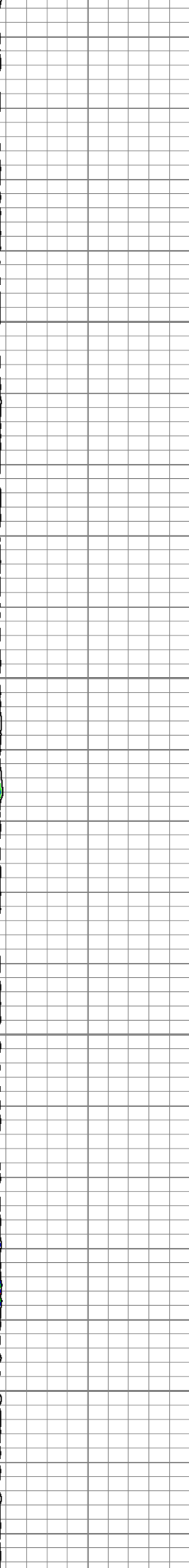
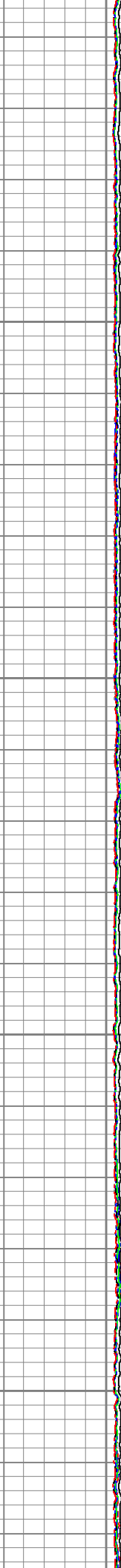
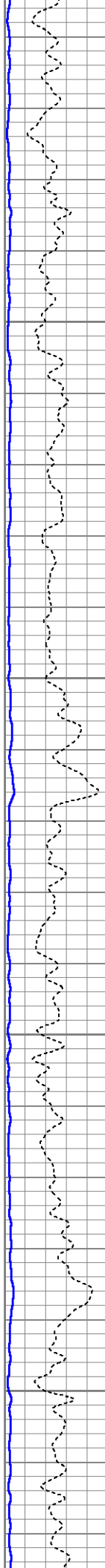
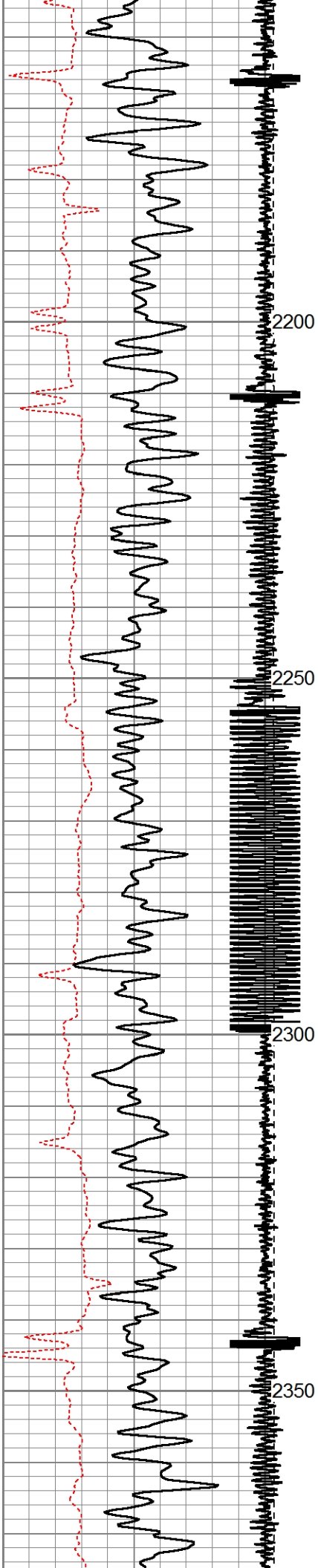


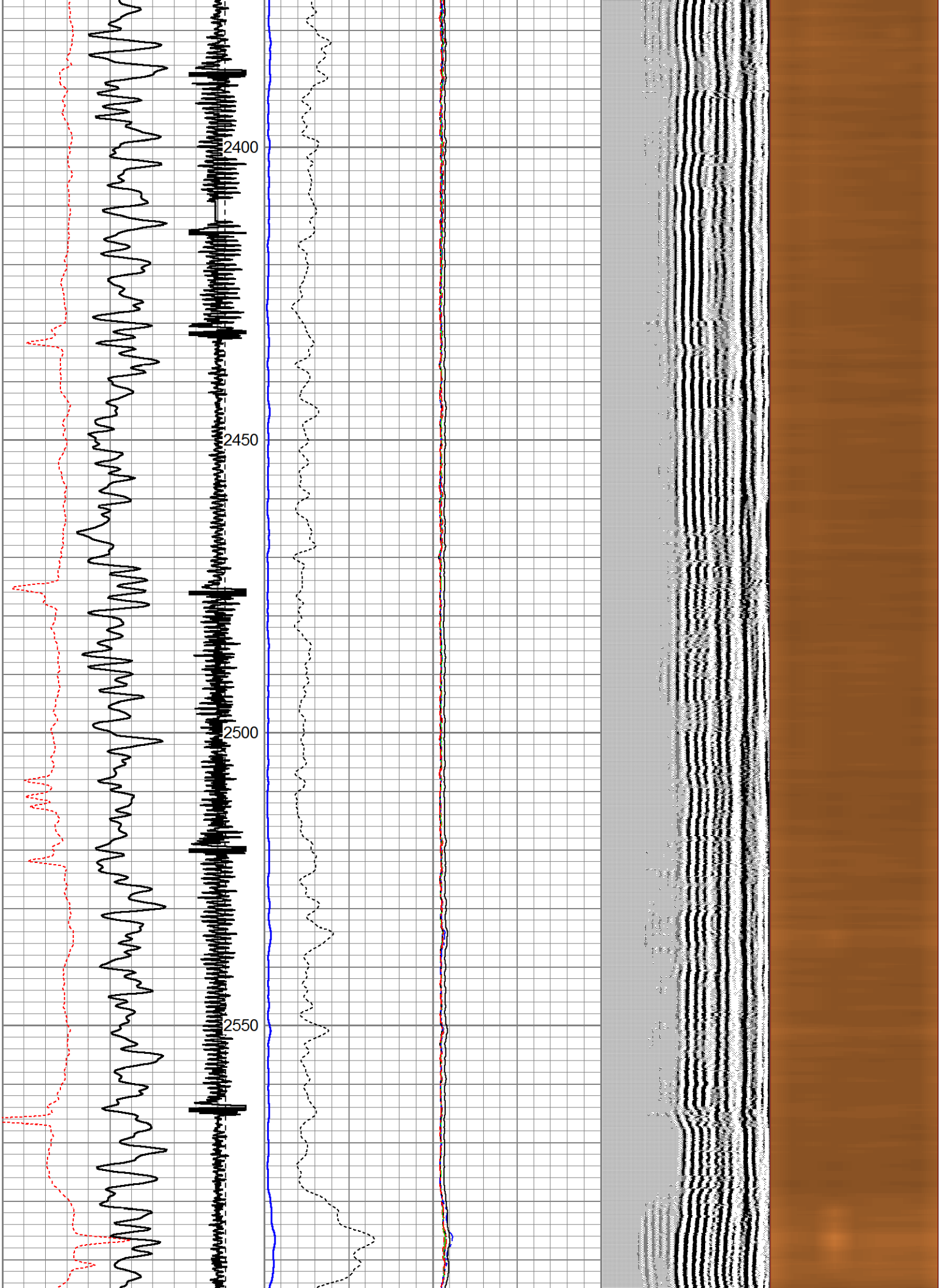


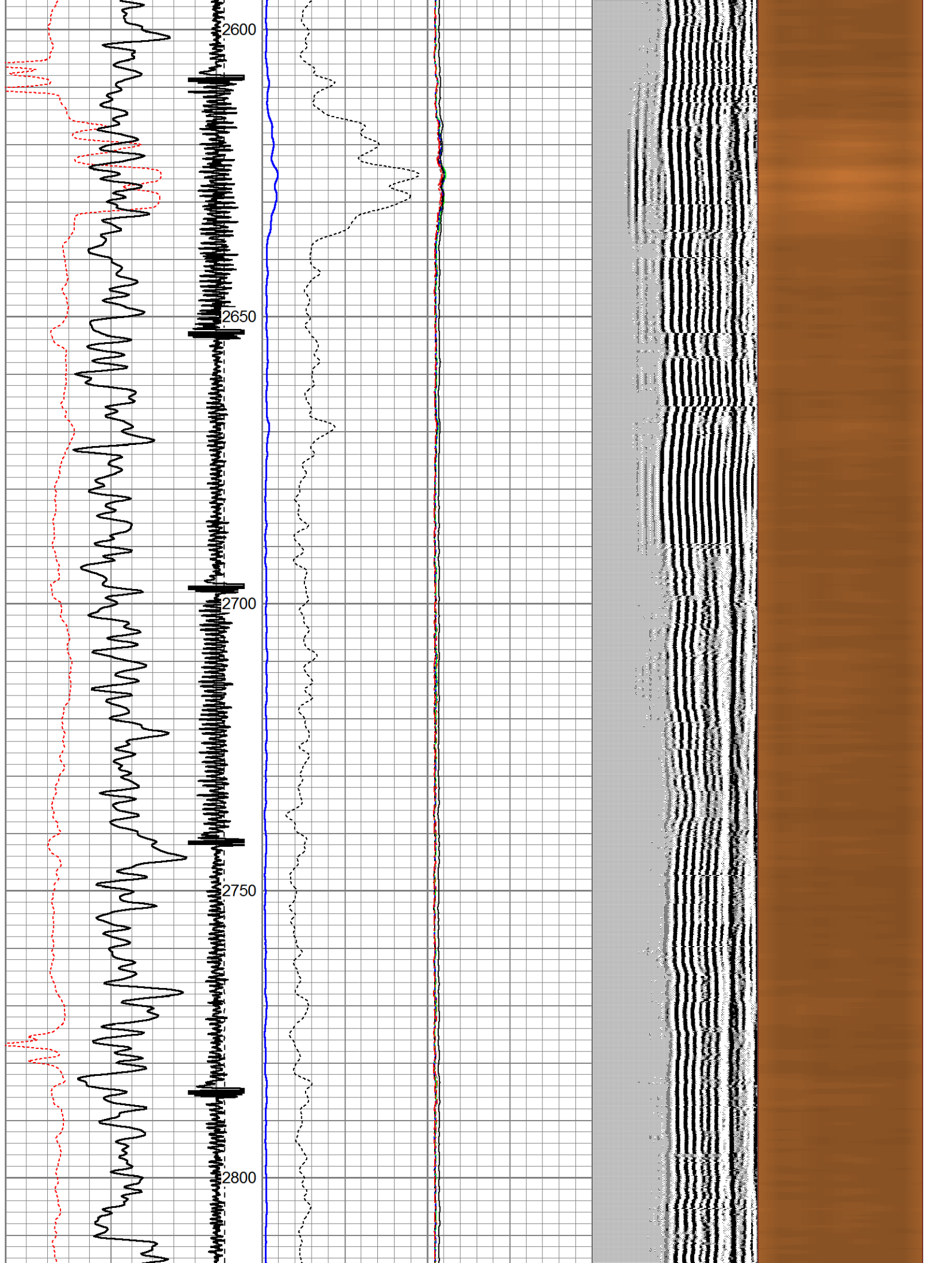


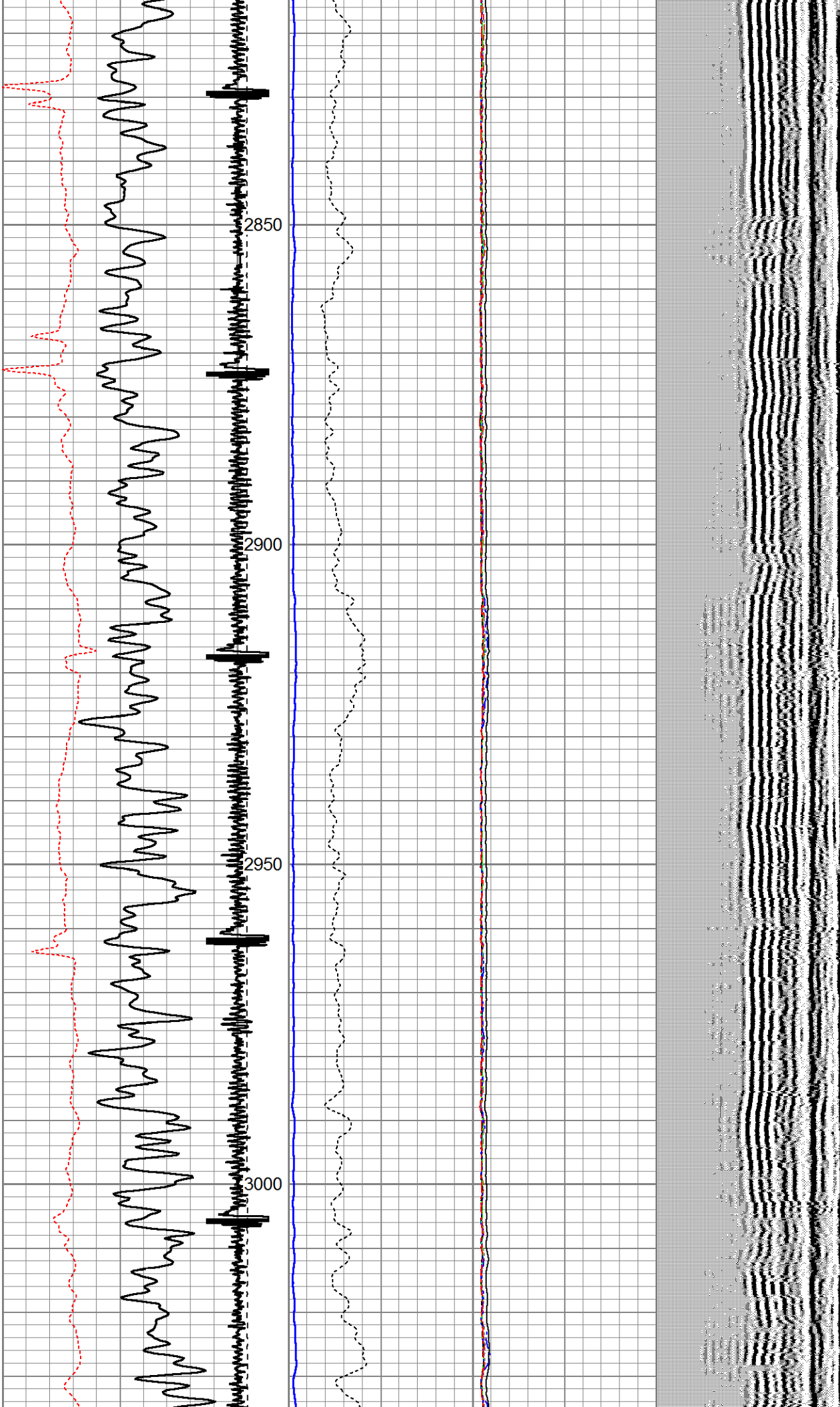


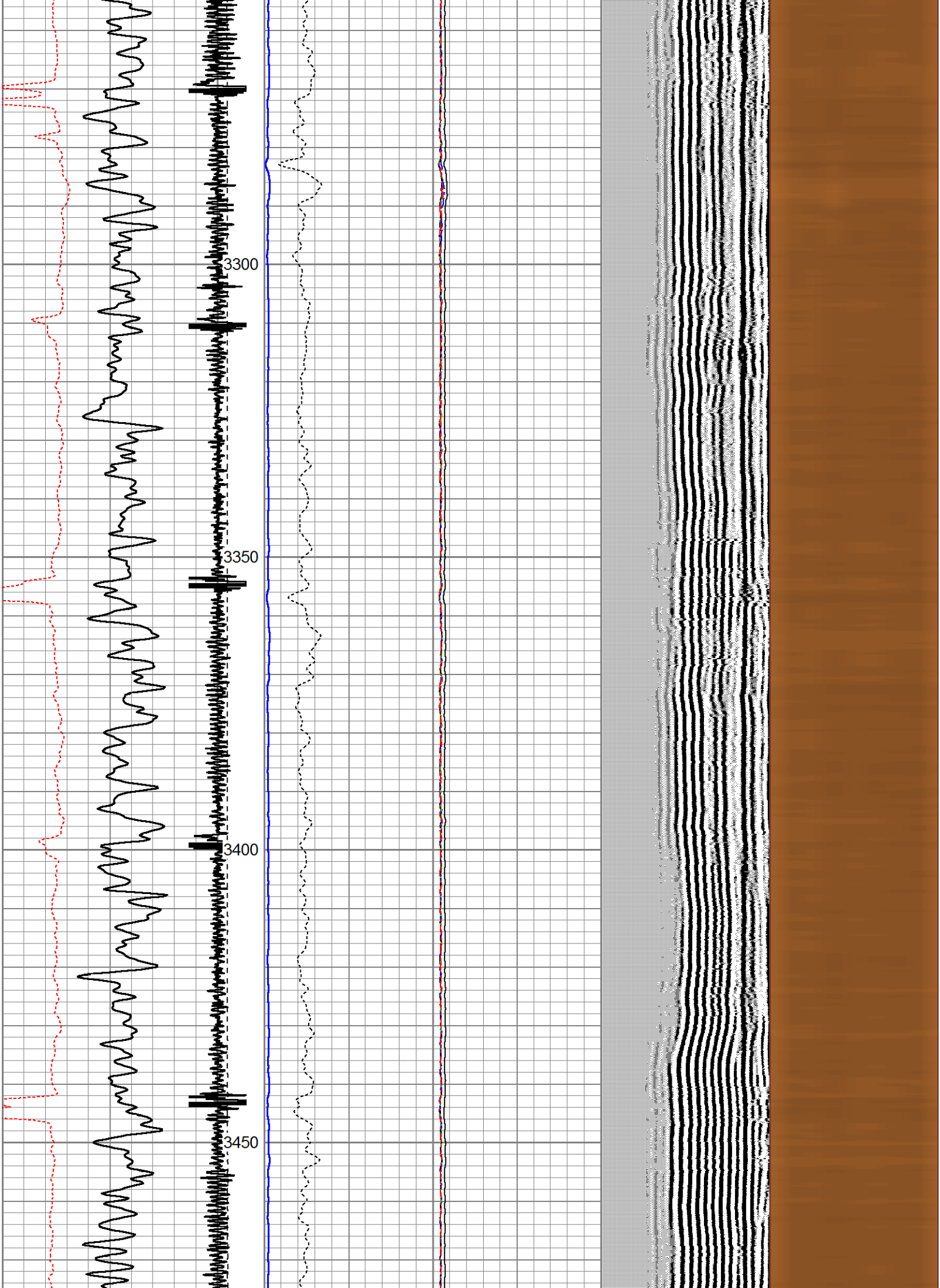


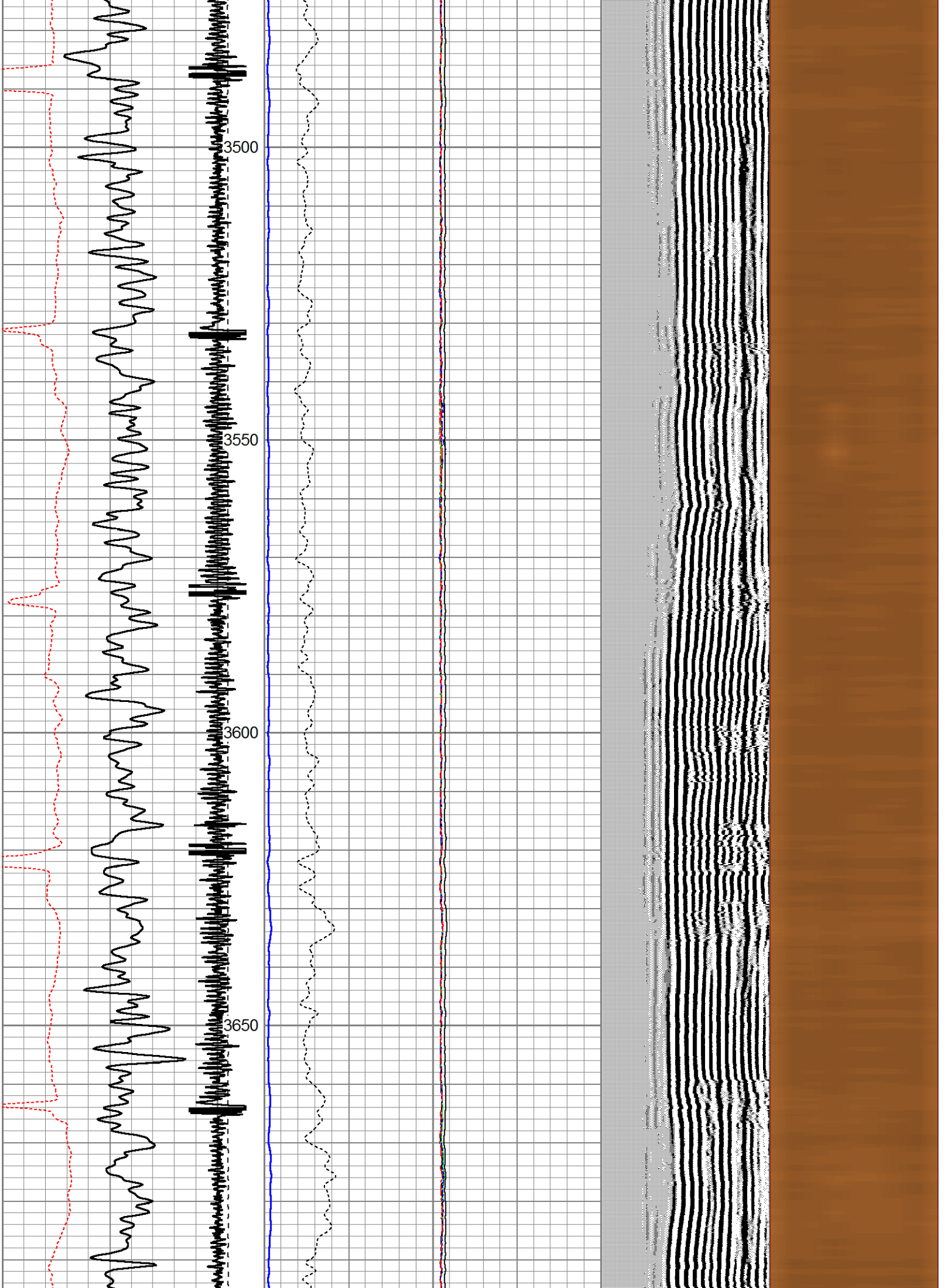


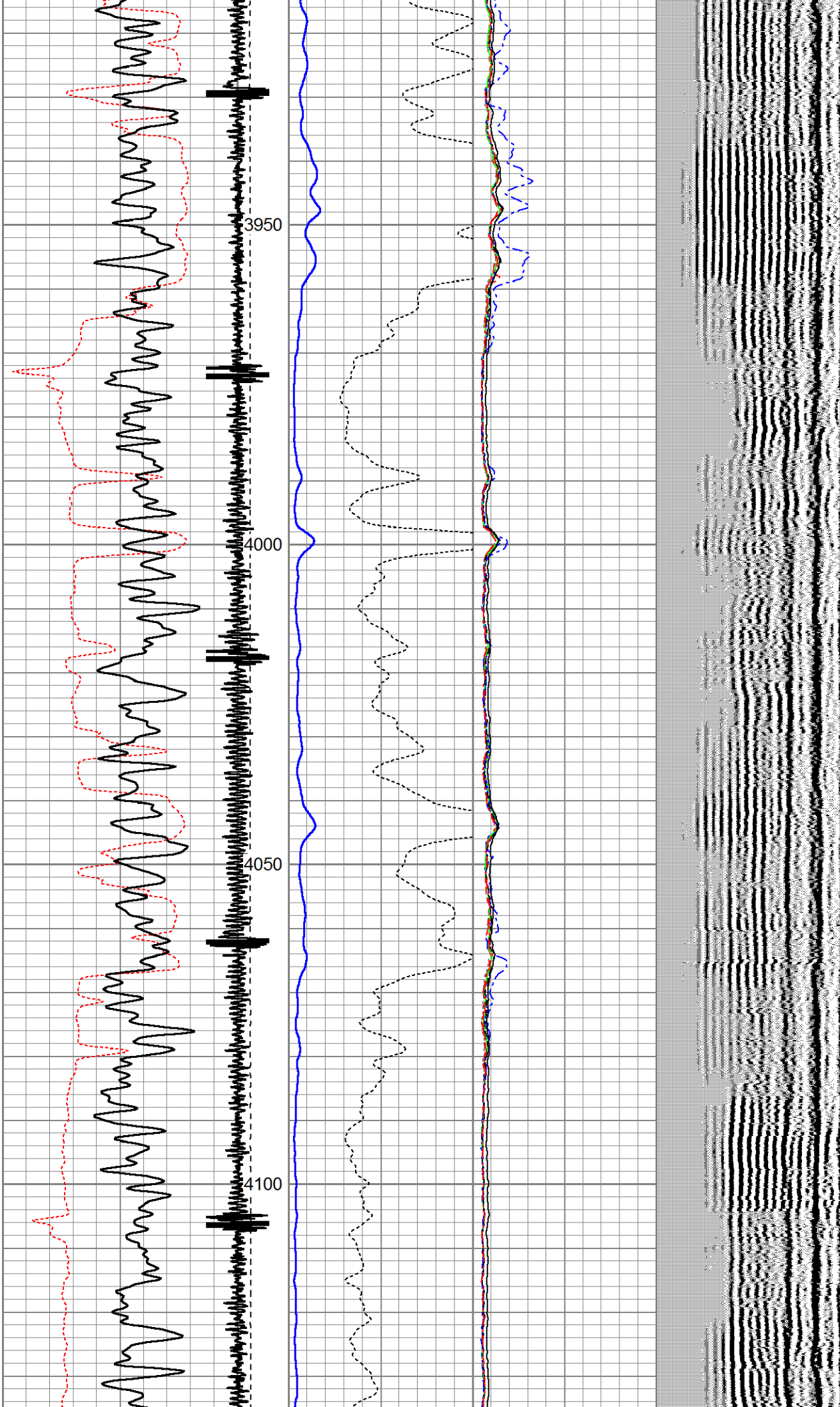


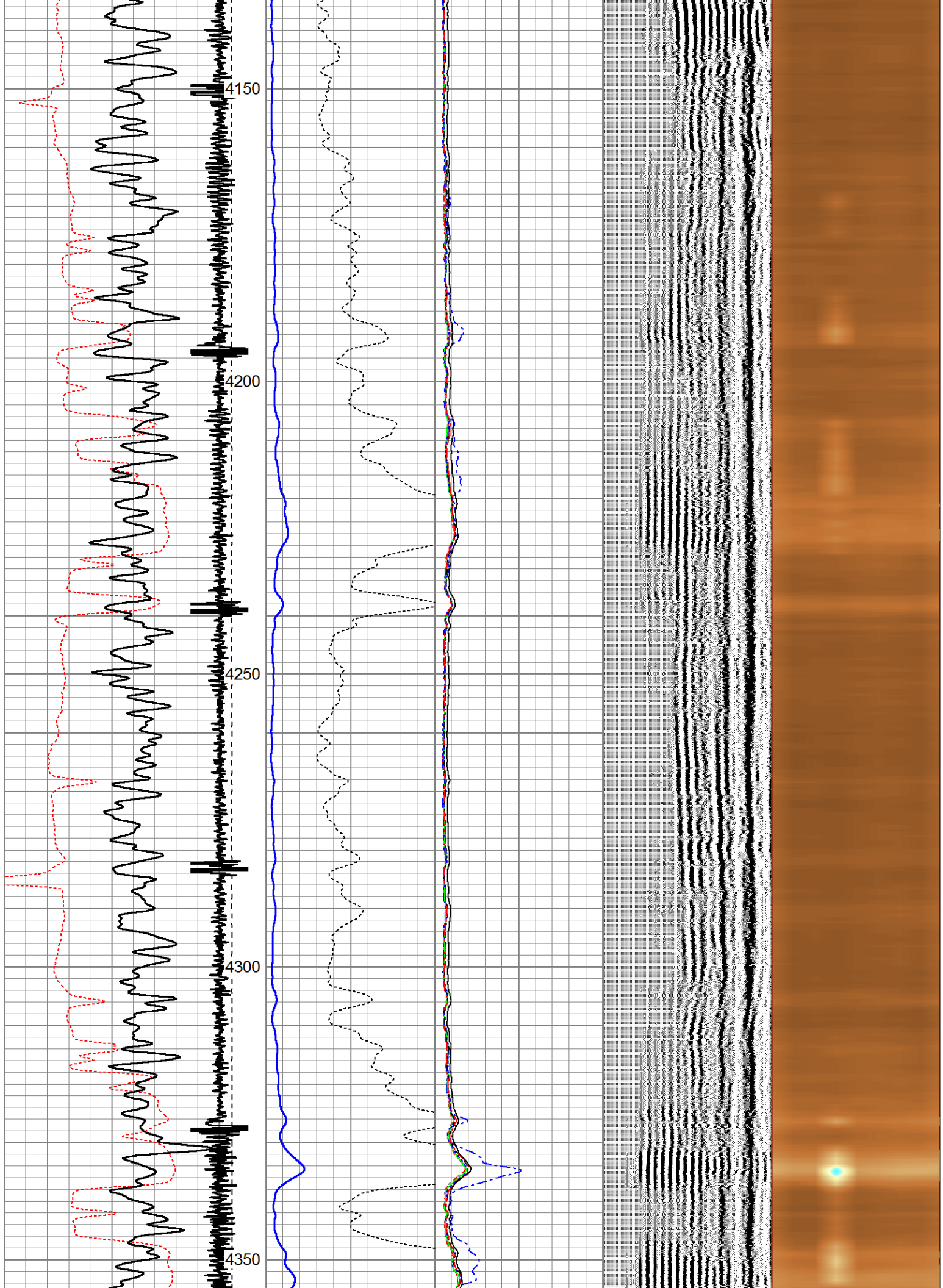


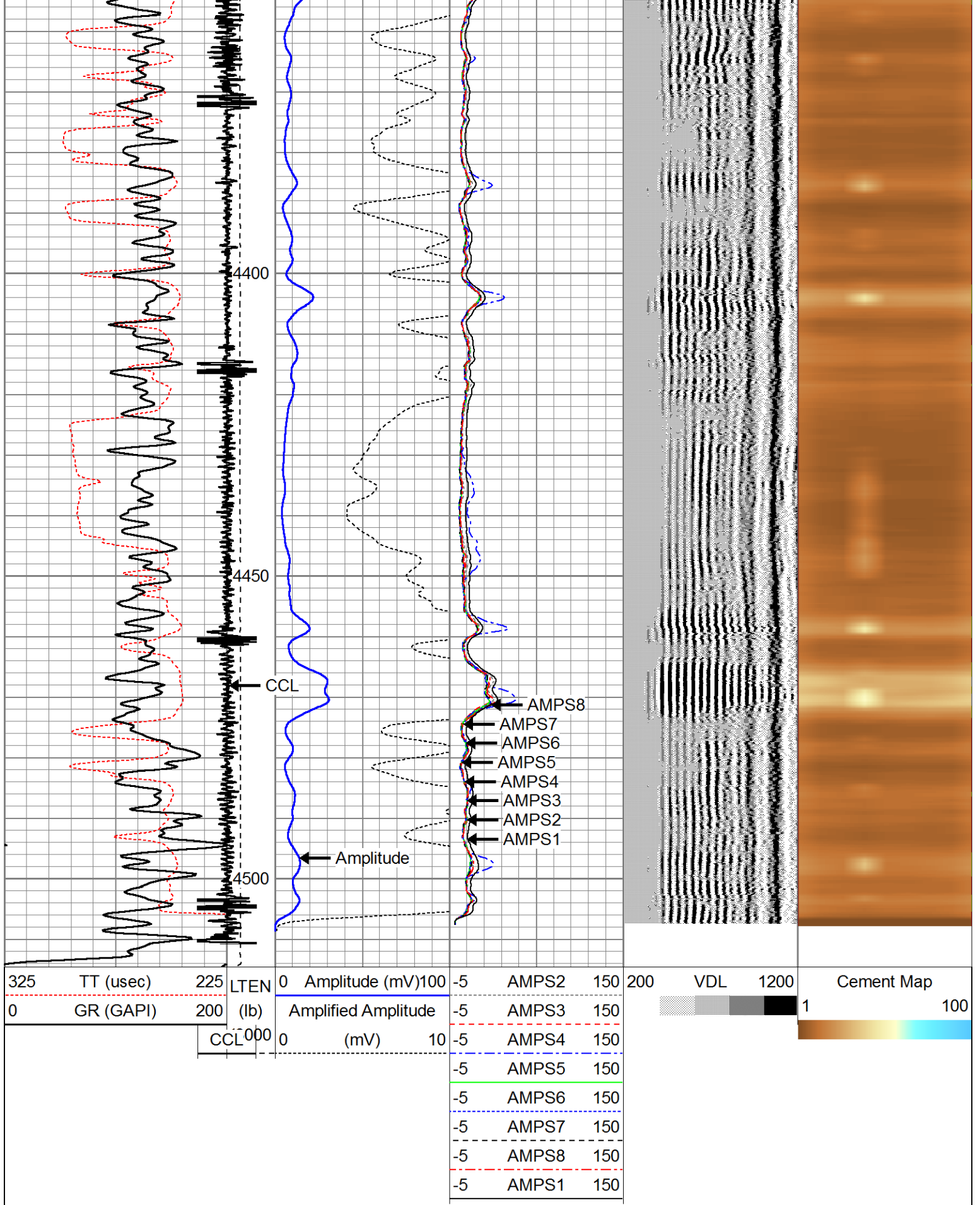












Company ANADARKO PETROLEUM CORP.

Well DRY CREEK 23-27

Field WATTENBERG

WIRELINE
Wireline Service, Inc.
A Cased Hole Wireline Company

Field WATTENBERG
County WELD
State COLORADO