



PROJECT DETAILS: Weld County, CO NAD 83

Geodetic System: US State Plane 1983  
Datum: North American Datum 1983  
Ellipsoid: GRS 1980  
Zone: Colorado Northern Zone  
System Datum: Mean Sea Level  
Local North: True

Project: Weld County, CO NAD 83  
Site: Fox Creek 25 SW Pad  
Well: Fox Creek 25-6203B  
Wellbore: OH  
Design: Plan 1



Azimuths to True North  
Magnetic North: 8.28°  
Magnetic Field  
Strength: 52808.6snT  
Dip Angle: 67.28°  
Date: 10/17/2018  
Model: HDGM



Plan: Plan 1 (Fox Creek 25-6203B/OH)

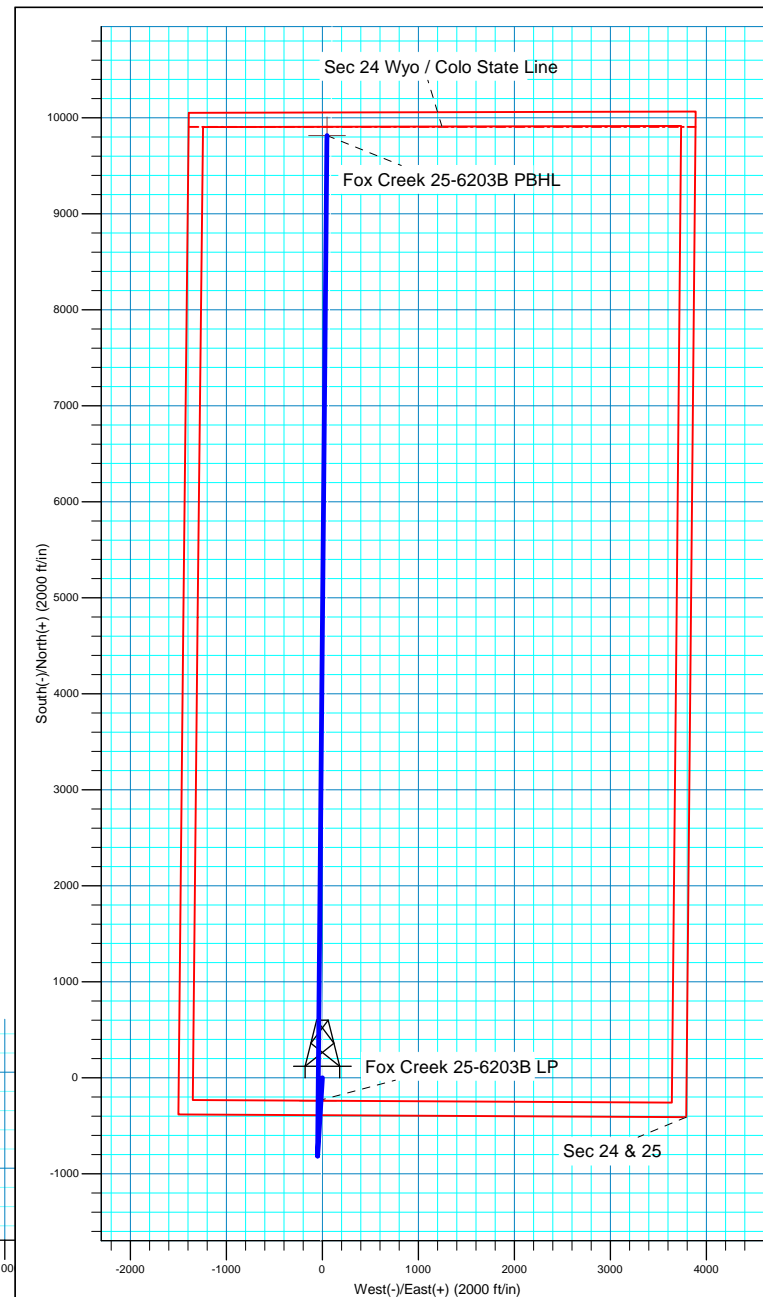
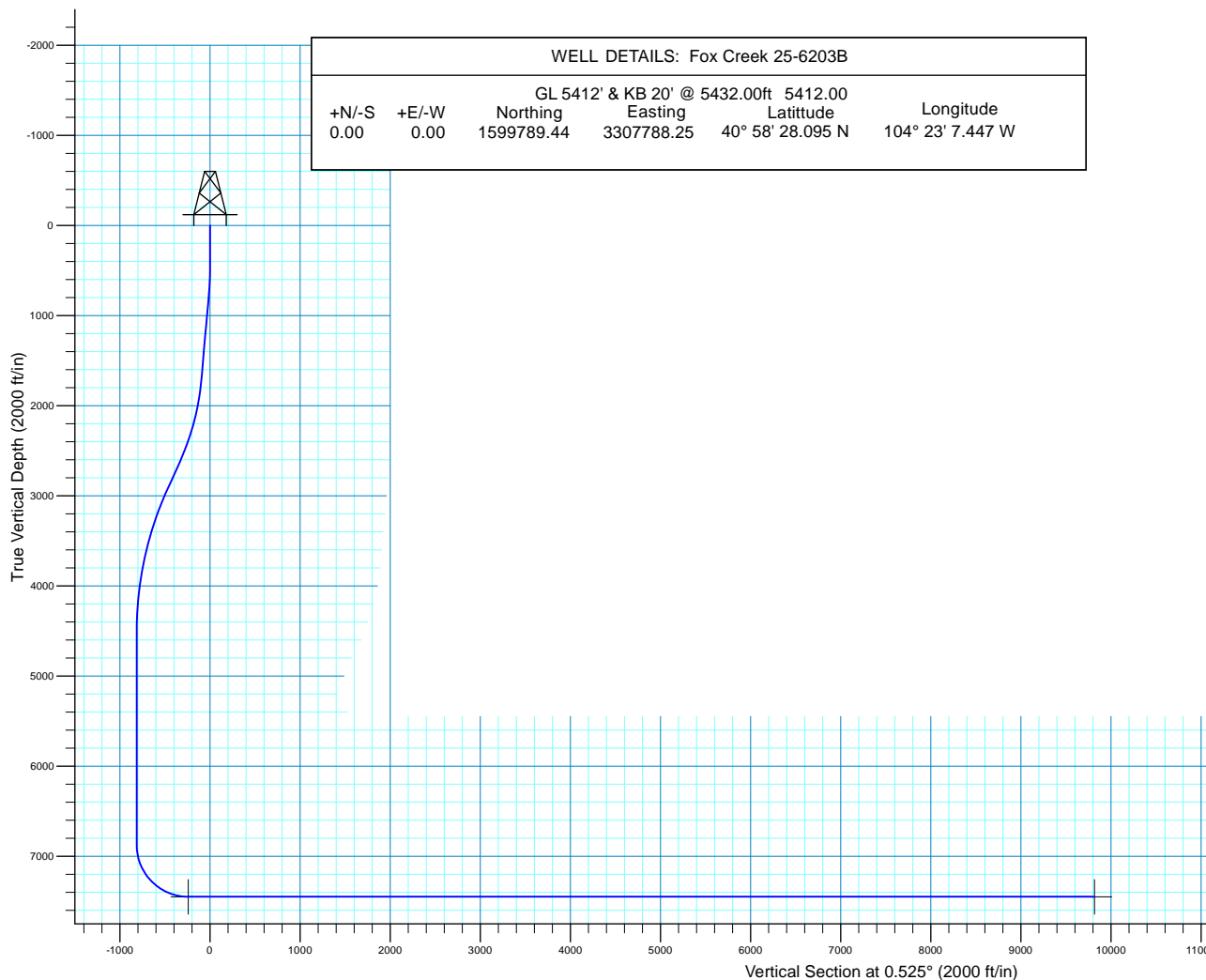
Created By: Seth Burstad

### SECTION DETAILS

MD	Inc	Azi	TVD	+N/-S	+E/-W	Dleg	TFace	VSect
0.00	0.00	0.000	0.00	0.00	0.00	0.00	0.00	0.00
500.00	0.00	0.000	500.00	0.00	0.00	0.00	0.00	0.00
750.00	5.00	183.559	749.68	-10.88	-0.68	2.00	183.56	-10.89
1703.95	5.00	183.559	1700.00	-93.86	-5.84	0.00	0.00	-93.91
2683.48	24.59	183.559	2642.45	-342.30	-21.29	2.00	0.00	-342.49
2983.48	24.59	183.559	2915.24	-466.91	-29.04	0.00	0.00	-467.15
4622.86	0.00	0.000	4504.75	-812.67	-50.54	1.50	180.00	-813.10
6995.15	0.00	0.000	6877.04	-812.67	-50.54	0.00	0.00	-813.10
7895.15	90.00	0.525	7450.00	-239.74	-45.29	10.00	0.53	-240.14
17952.74	90.00	0.525	7450.00	9817.44	46.93	0.00	0.00	9817.45

### WELL DETAILS: Fox Creek 25-6203B

GL 5412' & KB 20' @ 5432.00ft 5412.00  
+N/-S +E/-W Northing Easting Latitude Longitude  
0.00 0.00 1599789.44 3307788.25 40° 58' 28.095 N 104° 23' 7.447 W





# HighPoint Resources

Weld County, CO NAD 83  
Fox Creek 25 SW Pad  
Fox Creek 25-6203B

OH

Plan: Plan 1

## Standard Planning Report

17 October, 2018



<b>Database:</b>	Casper District	<b>Local Co-ordinate Reference:</b>	Well Fox Creek 25-6203B
<b>Company:</b>	HighPoint Resources	<b>TVD Reference:</b>	GL 5412' & KB 20' @ 5432.00ft
<b>Project:</b>	Weld County, CO NAD 83	<b>MD Reference:</b>	GL 5412' & KB 20' @ 5432.00ft
<b>Site:</b>	Fox Creek 25 SW Pad	<b>North Reference:</b>	True
<b>Well:</b>	Fox Creek 25-6203B	<b>Survey Calculation Method:</b>	Minimum Curvature
<b>Wellbore:</b>	OH		
<b>Design:</b>	Plan 1		

<b>Project</b>	Weld County, CO NAD 83		
<b>Map System:</b>	US State Plane 1983	<b>System Datum:</b>	Mean Sea Level
<b>Geo Datum:</b>	North American Datum 1983		
<b>Map Zone:</b>	Colorado Northern Zone		

Site	Fox Creek 25 SW Pad, Site Center : Fox Creek 25-6104B				
Site Position:		Northing:	1,599,789.47 usft	Latitude:	40° 58' 28.092 N
From:	Lat/Long	Easting:	3,307,818.08 usft	Longitude:	104° 23' 7.058 W
Position Uncertainty:	0.00 ft	Slot Radius:	13.200 in	Grid Convergence:	0.72 °

Well	Fox Creek 25-6203B, 390' FSL 1496' FWL Sec 25 T12N R63W					
Well Position	+N/-S	0.35 ft	Northing:	1,599,789.44 usft	Latitude:	40° 58' 28.095 N
	+E/-W	-29.82 ft	Easting:	3,307,788.26 usft	Longitude:	104° 23' 7.447 W
Position Uncertainty		0.00 ft	Wellhead Elevation:	0.00 ft	Ground Level:	5,412.00 ft

<b>Wellbore</b>	OH				
<b>Magnetics</b>	<b>Model Name</b>	<b>Sample Date</b>	<b>Declination (°)</b>	<b>Dip Angle (°)</b>	<b>Field Strength (nT)</b>
	HDGM	10/17/2018	8.28	67.28	52,809

<b>Design</b>	Plan 1			
<b>Audit Notes:</b>				
<b>Version:</b>	<b>Phase:</b>	PLAN	<b>Tie On Depth:</b>	0.00
<b>Vertical Section:</b>	<b>Depth From (TVD) (ft)</b>	<b>+N/-S (ft)</b>	<b>+E/-W (ft)</b>	<b>Direction (°)</b>
	0.00	0.00	0.00	0.525

<b>Plan Sections</b>										
Measured Depth (ft)	Inclination (°)	Azimuth (°)	Vertical Depth (ft)	+N/-S (ft)	+E/-W (ft)	Dogleg Rate (°/100ft)	Build Rate (°/100ft)	Turn Rate (°/100ft)	TFO (°)	Target
0.00	0.00	0.000	0.00	0.00	0.00	0.00	0.00	0.00	0.00	
500.00	0.00	0.000	500.00	0.00	0.00	0.00	0.00	0.00	0.00	
750.00	5.00	183.559	749.68	-10.88	-0.68	2.00	2.00	0.00	183.56	
1,703.95	5.00	183.559	1,700.00	-93.86	-5.84	0.00	0.00	0.00	0.00	
2,683.48	24.59	183.559	2,642.45	-342.30	-21.29	2.00	2.00	0.00	0.00	
2,983.48	24.59	183.559	2,915.24	-466.91	-29.04	0.00	0.00	0.00	0.00	
4,622.86	0.00	0.000	4,504.75	-812.67	-50.54	1.50	-1.50	0.00	180.00	
6,995.15	0.00	0.000	6,877.04	-812.67	-50.54	0.00	0.00	0.00	0.00	
7,895.15	90.00	0.525	7,450.00	-239.74	-45.29	10.00	10.00	0.06	0.53	
17,952.74	90.00	0.525	7,450.00	9,817.43	46.93	0.00	0.00	0.00	0.00	Fox Creek 25-6203B

<b>Database:</b>	Casper District	<b>Local Co-ordinate Reference:</b>	Well Fox Creek 25-6203B
<b>Company:</b>	HighPoint Resources	<b>TVD Reference:</b>	GL 5412' & KB 20' @ 5432.00ft
<b>Project:</b>	Weld County, CO NAD 83	<b>MD Reference:</b>	GL 5412' & KB 20' @ 5432.00ft
<b>Site:</b>	Fox Creek 25 SW Pad	<b>North Reference:</b>	True
<b>Well:</b>	Fox Creek 25-6203B	<b>Survey Calculation Method:</b>	Minimum Curvature
<b>Wellbore:</b>	OH		
<b>Design:</b>	Plan 1		

Planned Survey									
Measured Depth (ft)	Inclination (°)	Azimuth (°)	Vertical Depth (ft)	+N/-S (ft)	+E/-W (ft)	Vertical Section (ft)	Dogleg Rate (°/100ft)	Build Rate (°/100ft)	Turn Rate (°/100ft)
0.00	0.00	0.000	0.00	0.00	0.00	0.00	0.00	0.00	0.00
100.00	0.00	0.000	100.00	0.00	0.00	0.00	0.00	0.00	0.00
200.00	0.00	0.000	200.00	0.00	0.00	0.00	0.00	0.00	0.00
300.00	0.00	0.000	300.00	0.00	0.00	0.00	0.00	0.00	0.00
400.00	0.00	0.000	400.00	0.00	0.00	0.00	0.00	0.00	0.00
500.00	0.00	0.000	500.00	0.00	0.00	0.00	0.00	0.00	0.00
<b>Start Build 2.00</b>									
600.00	2.00	183.559	599.98	-1.74	-0.11	-1.74	2.00	2.00	0.00
700.00	4.00	183.559	699.84	-6.97	-0.43	-6.97	2.00	2.00	0.00
750.00	5.00	183.559	749.68	-10.88	-0.68	-10.89	2.00	2.00	0.00
<b>Start 953.95 hold at 750.00 MD</b>									
800.00	5.00	183.559	799.49	-15.23	-0.95	-15.24	0.00	0.00	0.00
900.00	5.00	183.559	899.11	-23.93	-1.49	-23.94	0.00	0.00	0.00
1,000.00	5.00	183.559	998.73	-32.63	-2.03	-32.64	0.00	0.00	0.00
1,100.00	5.00	183.559	1,098.35	-41.33	-2.57	-41.35	0.00	0.00	0.00
1,200.00	5.00	183.559	1,197.97	-50.02	-3.11	-50.05	0.00	0.00	0.00
1,300.00	5.00	183.559	1,297.59	-58.72	-3.65	-58.75	0.00	0.00	0.00
1,400.00	5.00	183.559	1,397.21	-67.42	-4.19	-67.46	0.00	0.00	0.00
1,500.00	5.00	183.559	1,496.83	-76.12	-4.73	-76.16	0.00	0.00	0.00
1,600.00	5.00	183.559	1,596.45	-84.82	-5.28	-84.86	0.00	0.00	0.00
1,700.00	5.00	183.559	1,696.07	-93.52	-5.82	-93.57	0.00	0.00	0.00
1,703.95	5.00	183.559	1,700.00	-93.86	-5.84	-93.91	0.00	0.00	0.00
<b>Start DLS 2.00 TFO 0.00</b>									
1,800.00	6.92	183.559	1,795.53	-103.82	-6.46	-103.87	2.00	2.00	0.00
1,900.00	8.92	183.559	1,894.57	-117.57	-7.31	-117.63	2.00	2.00	0.00
2,000.00	10.92	183.559	1,993.07	-134.77	-8.38	-134.84	2.00	2.00	0.00
2,100.00	12.92	183.559	2,090.91	-155.38	-9.66	-155.46	2.00	2.00	0.00
2,200.00	14.92	183.559	2,187.97	-179.39	-11.16	-179.49	2.00	2.00	0.00
2,300.00	16.92	183.559	2,284.12	-206.77	-12.86	-206.88	2.00	2.00	0.00
2,400.00	18.92	183.559	2,379.27	-237.48	-14.77	-237.60	2.00	2.00	0.00
2,500.00	20.92	183.559	2,473.28	-271.48	-16.88	-271.63	2.00	2.00	0.00
2,600.00	22.92	183.559	2,566.04	-308.74	-19.20	-308.91	2.00	2.00	0.00
2,683.48	24.59	183.559	2,642.45	-342.30	-21.29	-342.49	2.00	2.00	0.00
<b>Start 300.01 hold at 2683.48 MD</b>									
2,700.00	24.59	183.559	2,657.47	-349.17	-21.72	-349.35	0.00	0.00	0.00
2,800.00	24.59	183.559	2,748.40	-390.70	-24.30	-390.91	0.00	0.00	0.00
2,900.00	24.59	183.559	2,839.33	-432.23	-26.88	-432.46	0.00	0.00	0.00
2,983.48	24.59	183.559	2,915.24	-466.91	-29.04	-467.15	0.00	0.00	0.00
<b>Start Drop -1.50</b>									
3,000.00	24.34	183.559	2,930.28	-473.73	-29.46	-473.98	1.50	-1.50	0.00
3,100.00	22.84	183.559	3,021.92	-513.68	-31.95	-513.95	1.50	-1.50	0.00
3,200.00	21.34	183.559	3,114.57	-551.22	-34.28	-551.51	1.50	-1.50	0.00
3,300.00	19.84	183.559	3,208.18	-586.32	-36.46	-586.63	1.50	-1.50	0.00
3,400.00	18.34	183.559	3,302.67	-618.97	-38.49	-619.29	1.50	-1.50	0.00
3,500.00	16.84	183.559	3,397.99	-649.13	-40.37	-649.47	1.50	-1.50	0.00
3,600.00	15.34	183.559	3,494.07	-676.80	-42.09	-677.15	1.50	-1.50	0.00
3,700.00	13.84	183.559	3,590.84	-701.94	-43.65	-702.31	1.50	-1.50	0.00
3,800.00	12.34	183.559	3,688.24	-724.55	-45.06	-724.93	1.50	-1.50	0.00
3,900.00	10.84	183.559	3,786.20	-744.61	-46.31	-745.00	1.50	-1.50	0.00
4,000.00	9.34	183.559	3,884.65	-762.10	-47.39	-762.50	1.50	-1.50	0.00
4,100.00	7.84	183.559	3,983.52	-777.01	-48.32	-777.42	1.50	-1.50	0.00
4,200.00	6.34	183.559	4,082.76	-789.33	-49.09	-789.75	1.50	-1.50	0.00
4,300.00	4.84	183.559	4,182.28	-799.06	-49.69	-799.48	1.50	-1.50	0.00
4,400.00	3.34	183.559	4,282.02	-806.18	-50.14	-806.61	1.50	-1.50	0.00

<b>Database:</b>	Casper District	<b>Local Co-ordinate Reference:</b>	Well Fox Creek 25-6203B
<b>Company:</b>	HighPoint Resources	<b>TVD Reference:</b>	GL 5412' & KB 20' @ 5432.00ft
<b>Project:</b>	Weld County, CO NAD 83	<b>MD Reference:</b>	GL 5412' & KB 20' @ 5432.00ft
<b>Site:</b>	Fox Creek 25 SW Pad	<b>North Reference:</b>	True
<b>Well:</b>	Fox Creek 25-6203B	<b>Survey Calculation Method:</b>	Minimum Curvature
<b>Wellbore:</b>	OH		
<b>Design:</b>	Plan 1		

Planned Survey									
Measured Depth (ft)	Inclination (°)	Azimuth (°)	Vertical Depth (ft)	+N/-S (ft)	+E/-W (ft)	Vertical Section (ft)	Dogleg Rate (°/100ft)	Build Rate (°/100ft)	Turn Rate (°/100ft)
4,500.00	1.84	183.559	4,381.91	-810.70	-50.42	-811.13	1.50	-1.50	0.00
4,600.00	0.34	183.559	4,481.89	-812.60	-50.54	-813.03	1.50	-1.50	0.00
4,622.86	0.00	0.000	4,504.75	-812.67	-50.54	-813.10	1.50	-1.50	0.00
Start 2372.29 hold at 4622.86 MD									
4,700.00	0.00	0.000	4,581.89	-812.67	-50.54	-813.10	0.00	0.00	0.00
4,800.00	0.00	0.000	4,681.89	-812.67	-50.54	-813.10	0.00	0.00	0.00
4,900.00	0.00	0.000	4,781.89	-812.67	-50.54	-813.10	0.00	0.00	0.00
5,000.00	0.00	0.000	4,881.89	-812.67	-50.54	-813.10	0.00	0.00	0.00
5,100.00	0.00	0.000	4,981.89	-812.67	-50.54	-813.10	0.00	0.00	0.00
5,200.00	0.00	0.000	5,081.89	-812.67	-50.54	-813.10	0.00	0.00	0.00
5,300.00	0.00	0.000	5,181.89	-812.67	-50.54	-813.10	0.00	0.00	0.00
5,400.00	0.00	0.000	5,281.89	-812.67	-50.54	-813.10	0.00	0.00	0.00
5,500.00	0.00	0.000	5,381.89	-812.67	-50.54	-813.10	0.00	0.00	0.00
5,600.00	0.00	0.000	5,481.89	-812.67	-50.54	-813.10	0.00	0.00	0.00
5,700.00	0.00	0.000	5,581.89	-812.67	-50.54	-813.10	0.00	0.00	0.00
5,800.00	0.00	0.000	5,681.89	-812.67	-50.54	-813.10	0.00	0.00	0.00
5,900.00	0.00	0.000	5,781.89	-812.67	-50.54	-813.10	0.00	0.00	0.00
6,000.00	0.00	0.000	5,881.89	-812.67	-50.54	-813.10	0.00	0.00	0.00
6,100.00	0.00	0.000	5,981.89	-812.67	-50.54	-813.10	0.00	0.00	0.00
6,200.00	0.00	0.000	6,081.89	-812.67	-50.54	-813.10	0.00	0.00	0.00
6,300.00	0.00	0.000	6,181.89	-812.67	-50.54	-813.10	0.00	0.00	0.00
6,400.00	0.00	0.000	6,281.89	-812.67	-50.54	-813.10	0.00	0.00	0.00
6,500.00	0.00	0.000	6,381.89	-812.67	-50.54	-813.10	0.00	0.00	0.00
6,600.00	0.00	0.000	6,481.89	-812.67	-50.54	-813.10	0.00	0.00	0.00
6,700.00	0.00	0.000	6,581.89	-812.67	-50.54	-813.10	0.00	0.00	0.00
6,800.00	0.00	0.000	6,681.89	-812.67	-50.54	-813.10	0.00	0.00	0.00
6,900.00	0.00	0.000	6,781.89	-812.67	-50.54	-813.10	0.00	0.00	0.00
6,995.15	0.00	0.000	6,877.04	-812.67	-50.54	-813.10	0.00	0.00	0.00
Start DLS 10.00 TFO 0.53									
7,000.00	0.49	0.525	6,881.89	-812.65	-50.54	-813.08	10.00	10.00	0.00
7,100.00	10.49	0.525	6,981.31	-803.10	-50.45	-803.53	10.00	10.00	0.00
7,200.00	20.49	0.525	7,077.56	-776.44	-50.21	-776.87	10.00	10.00	0.00
7,300.00	30.49	0.525	7,167.71	-733.47	-49.81	-733.89	10.00	10.00	0.00
7,400.00	40.49	0.525	7,249.03	-675.49	-49.28	-675.92	10.00	10.00	0.00
7,500.00	50.49	0.525	7,319.05	-604.28	-48.63	-604.70	10.00	10.00	0.00
7,600.00	60.49	0.525	7,375.64	-521.99	-47.87	-522.41	10.00	10.00	0.00
7,700.00	70.49	0.525	7,417.08	-431.12	-47.04	-431.54	10.00	10.00	0.00
7,800.00	80.49	0.525	7,442.12	-334.44	-46.16	-334.85	10.00	10.00	0.00
7,895.15	90.00	0.525	7,450.00	-239.74	-45.29	-240.14	10.00	10.00	0.00
Start 10057.59 hold at 7895.15 MD									
7,900.00	90.00	0.525	7,450.00	-234.88	-45.24	-235.29	0.00	0.00	0.00
8,000.00	90.00	0.525	7,450.00	-134.89	-44.33	-135.29	0.00	0.00	0.00
8,100.00	90.00	0.525	7,450.00	-34.89	-43.41	-35.29	0.00	0.00	0.00
8,200.00	90.00	0.525	7,450.00	65.10	-42.49	64.71	0.00	0.00	0.00
8,300.00	90.00	0.525	7,450.00	165.10	-41.57	164.71	0.00	0.00	0.00
8,400.00	90.00	0.525	7,450.00	265.09	-40.66	264.71	0.00	0.00	0.00
8,500.00	90.00	0.525	7,450.00	365.09	-39.74	364.71	0.00	0.00	0.00
8,600.00	90.00	0.525	7,450.00	465.09	-38.82	464.71	0.00	0.00	0.00
8,700.00	90.00	0.525	7,450.00	565.08	-37.91	564.71	0.00	0.00	0.00
8,800.00	90.00	0.525	7,450.00	665.08	-36.99	664.71	0.00	0.00	0.00
8,900.00	90.00	0.525	7,450.00	765.07	-36.07	764.71	0.00	0.00	0.00
9,000.00	90.00	0.525	7,450.00	865.07	-35.16	864.71	0.00	0.00	0.00
9,100.00	90.00	0.525	7,450.00	965.07	-34.24	964.71	0.00	0.00	0.00

<b>Database:</b>	Casper District	<b>Local Co-ordinate Reference:</b>	Well Fox Creek 25-6203B
<b>Company:</b>	HighPoint Resources	<b>TVD Reference:</b>	GL 5412' & KB 20' @ 5432.00ft
<b>Project:</b>	Weld County, CO NAD 83	<b>MD Reference:</b>	GL 5412' & KB 20' @ 5432.00ft
<b>Site:</b>	Fox Creek 25 SW Pad	<b>North Reference:</b>	True
<b>Well:</b>	Fox Creek 25-6203B	<b>Survey Calculation Method:</b>	Minimum Curvature
<b>Wellbore:</b>	OH		
<b>Design:</b>	Plan 1		

Planned Survey									
Measured Depth (ft)	Inclination (°)	Azimuth (°)	Vertical Depth (ft)	+N/-S (ft)	+E/-W (ft)	Vertical Section (ft)	Dogleg Rate (°/100ft)	Build Rate (°/100ft)	Turn Rate (°/100ft)
9,200.00	90.00	0.525	7,450.00	1,065.06	-33.32	1,064.71	0.00	0.00	0.00
9,300.00	90.00	0.525	7,450.00	1,165.06	-32.41	1,164.71	0.00	0.00	0.00
9,400.00	90.00	0.525	7,450.00	1,265.05	-31.49	1,264.71	0.00	0.00	0.00
9,500.00	90.00	0.525	7,450.00	1,365.05	-30.57	1,364.71	0.00	0.00	0.00
9,600.00	90.00	0.525	7,450.00	1,465.04	-29.66	1,464.71	0.00	0.00	0.00
9,700.00	90.00	0.525	7,450.00	1,565.04	-28.74	1,564.71	0.00	0.00	0.00
9,800.00	90.00	0.525	7,450.00	1,665.04	-27.82	1,664.71	0.00	0.00	0.00
9,900.00	90.00	0.525	7,450.00	1,765.03	-26.91	1,764.71	0.00	0.00	0.00
10,000.00	90.00	0.525	7,450.00	1,865.03	-25.99	1,864.71	0.00	0.00	0.00
10,100.00	90.00	0.525	7,450.00	1,965.02	-25.07	1,964.71	0.00	0.00	0.00
10,200.00	90.00	0.525	7,450.00	2,065.02	-24.15	2,064.71	0.00	0.00	0.00
10,300.00	90.00	0.525	7,450.00	2,165.01	-23.24	2,164.71	0.00	0.00	0.00
10,400.00	90.00	0.525	7,450.00	2,265.01	-22.32	2,264.71	0.00	0.00	0.00
10,500.00	90.00	0.525	7,450.00	2,365.01	-21.40	2,364.71	0.00	0.00	0.00
10,600.00	90.00	0.525	7,450.00	2,465.00	-20.49	2,464.71	0.00	0.00	0.00
10,700.00	90.00	0.525	7,450.00	2,565.00	-19.57	2,564.71	0.00	0.00	0.00
10,800.00	90.00	0.525	7,450.00	2,664.99	-18.65	2,664.71	0.00	0.00	0.00
10,900.00	90.00	0.525	7,450.00	2,764.99	-17.74	2,764.71	0.00	0.00	0.00
11,000.00	90.00	0.525	7,450.00	2,864.99	-16.82	2,864.71	0.00	0.00	0.00
11,100.00	90.00	0.525	7,450.00	2,964.98	-15.90	2,964.71	0.00	0.00	0.00
11,200.00	90.00	0.525	7,450.00	3,064.98	-14.99	3,064.71	0.00	0.00	0.00
11,300.00	90.00	0.525	7,450.00	3,164.97	-14.07	3,164.71	0.00	0.00	0.00
11,400.00	90.00	0.525	7,450.00	3,264.97	-13.15	3,264.71	0.00	0.00	0.00
11,500.00	90.00	0.525	7,450.00	3,364.96	-12.24	3,364.71	0.00	0.00	0.00
11,600.00	90.00	0.525	7,450.00	3,464.96	-11.32	3,464.71	0.00	0.00	0.00
11,700.00	90.00	0.525	7,450.00	3,564.96	-10.40	3,564.71	0.00	0.00	0.00
11,800.00	90.00	0.525	7,450.00	3,664.95	-9.48	3,664.71	0.00	0.00	0.00
11,900.00	90.00	0.525	7,450.00	3,764.95	-8.57	3,764.71	0.00	0.00	0.00
12,000.00	90.00	0.525	7,450.00	3,864.94	-7.65	3,864.71	0.00	0.00	0.00
12,100.00	90.00	0.525	7,450.00	3,964.94	-6.73	3,964.71	0.00	0.00	0.00
12,200.00	90.00	0.525	7,450.00	4,064.93	-5.82	4,064.71	0.00	0.00	0.00
12,300.00	90.00	0.525	7,450.00	4,164.93	-4.90	4,164.71	0.00	0.00	0.00
12,400.00	90.00	0.525	7,450.00	4,264.93	-3.98	4,264.71	0.00	0.00	0.00
12,500.00	90.00	0.525	7,450.00	4,364.92	-3.07	4,364.71	0.00	0.00	0.00
12,600.00	90.00	0.525	7,450.00	4,464.92	-2.15	4,464.71	0.00	0.00	0.00
12,700.00	90.00	0.525	7,450.00	4,564.91	-1.23	4,564.71	0.00	0.00	0.00
12,800.00	90.00	0.525	7,450.00	4,664.91	-0.32	4,664.71	0.00	0.00	0.00
12,900.00	90.00	0.525	7,450.00	4,764.91	0.60	4,764.71	0.00	0.00	0.00
13,000.00	90.00	0.525	7,450.00	4,864.90	1.52	4,864.71	0.00	0.00	0.00
13,100.00	90.00	0.525	7,450.00	4,964.90	2.43	4,964.71	0.00	0.00	0.00
13,200.00	90.00	0.525	7,450.00	5,064.89	3.35	5,064.71	0.00	0.00	0.00
13,300.00	90.00	0.525	7,450.00	5,164.89	4.27	5,164.71	0.00	0.00	0.00
13,400.00	90.00	0.525	7,450.00	5,264.88	5.18	5,264.71	0.00	0.00	0.00
13,500.00	90.00	0.525	7,450.00	5,364.88	6.10	5,364.71	0.00	0.00	0.00
13,600.00	90.00	0.525	7,450.00	5,464.88	7.02	5,464.71	0.00	0.00	0.00
13,700.00	90.00	0.525	7,450.00	5,564.87	7.94	5,564.71	0.00	0.00	0.00
13,800.00	90.00	0.525	7,450.00	5,664.87	8.85	5,664.71	0.00	0.00	0.00
13,900.00	90.00	0.525	7,450.00	5,764.86	9.77	5,764.71	0.00	0.00	0.00
14,000.00	90.00	0.525	7,450.00	5,864.86	10.69	5,864.71	0.00	0.00	0.00
14,100.00	90.00	0.525	7,450.00	5,964.86	11.60	5,964.71	0.00	0.00	0.00
14,200.00	90.00	0.525	7,450.00	6,064.85	12.52	6,064.71	0.00	0.00	0.00
14,300.00	90.00	0.525	7,450.00	6,164.85	13.44	6,164.71	0.00	0.00	0.00
14,400.00	90.00	0.525	7,450.00	6,264.84	14.35	6,264.71	0.00	0.00	0.00
14,500.00	90.00	0.525	7,450.00	6,364.84	15.27	6,364.71	0.00	0.00	0.00

<b>Database:</b>	Casper District	<b>Local Co-ordinate Reference:</b>	Well Fox Creek 25-6203B
<b>Company:</b>	HighPoint Resources	<b>TVD Reference:</b>	GL 5412' & KB 20' @ 5432.00ft
<b>Project:</b>	Weld County, CO NAD 83	<b>MD Reference:</b>	GL 5412' & KB 20' @ 5432.00ft
<b>Site:</b>	Fox Creek 25 SW Pad	<b>North Reference:</b>	True
<b>Well:</b>	Fox Creek 25-6203B	<b>Survey Calculation Method:</b>	Minimum Curvature
<b>Wellbore:</b>	OH		
<b>Design:</b>	Plan 1		

Planned Survey										
Measured Depth (ft)	Inclination (°)	Azimuth (°)	Vertical Depth (ft)	+N/-S (ft)	+E/-W (ft)	Vertical Section (ft)	Dogleg Rate (°/100ft)	Build Rate (°/100ft)	Turn Rate (°/100ft)	
14,600.00	90.00	0.525	7,450.00	6,464.83	16.19	6,464.71	0.00	0.00	0.00	
14,700.00	90.00	0.525	7,450.00	6,564.83	17.10	6,564.71	0.00	0.00	0.00	
14,800.00	90.00	0.525	7,450.00	6,664.83	18.02	6,664.71	0.00	0.00	0.00	
14,900.00	90.00	0.525	7,450.00	6,764.82	18.94	6,764.71	0.00	0.00	0.00	
15,000.00	90.00	0.525	7,450.00	6,864.82	19.85	6,864.71	0.00	0.00	0.00	
15,100.00	90.00	0.525	7,450.00	6,964.81	20.77	6,964.71	0.00	0.00	0.00	
15,200.00	90.00	0.525	7,450.00	7,064.81	21.69	7,064.71	0.00	0.00	0.00	
15,300.00	90.00	0.525	7,450.00	7,164.80	22.60	7,164.71	0.00	0.00	0.00	
15,400.00	90.00	0.525	7,450.00	7,264.80	23.52	7,264.71	0.00	0.00	0.00	
15,500.00	90.00	0.525	7,450.00	7,364.80	24.44	7,364.71	0.00	0.00	0.00	
15,600.00	90.00	0.525	7,450.00	7,464.79	25.36	7,464.71	0.00	0.00	0.00	
15,700.00	90.00	0.525	7,450.00	7,564.79	26.27	7,564.71	0.00	0.00	0.00	
15,800.00	90.00	0.525	7,450.00	7,664.78	27.19	7,664.71	0.00	0.00	0.00	
15,900.00	90.00	0.525	7,450.00	7,764.78	28.11	7,764.71	0.00	0.00	0.00	
16,000.00	90.00	0.525	7,450.00	7,864.78	29.02	7,864.71	0.00	0.00	0.00	
16,100.00	90.00	0.525	7,450.00	7,964.77	29.94	7,964.71	0.00	0.00	0.00	
16,200.00	90.00	0.525	7,450.00	8,064.77	30.86	8,064.71	0.00	0.00	0.00	
16,300.00	90.00	0.525	7,450.00	8,164.76	31.77	8,164.71	0.00	0.00	0.00	
16,400.00	90.00	0.525	7,450.00	8,264.76	32.69	8,264.71	0.00	0.00	0.00	
16,500.00	90.00	0.525	7,450.00	8,364.75	33.61	8,364.71	0.00	0.00	0.00	
16,600.00	90.00	0.525	7,450.00	8,464.75	34.52	8,464.71	0.00	0.00	0.00	
16,700.00	90.00	0.525	7,450.00	8,564.75	35.44	8,564.71	0.00	0.00	0.00	
16,800.00	90.00	0.525	7,450.00	8,664.74	36.36	8,664.71	0.00	0.00	0.00	
16,900.00	90.00	0.525	7,450.00	8,764.74	37.27	8,764.71	0.00	0.00	0.00	
17,000.00	90.00	0.525	7,450.00	8,864.73	38.19	8,864.71	0.00	0.00	0.00	
17,100.00	90.00	0.525	7,450.00	8,964.73	39.11	8,964.71	0.00	0.00	0.00	
17,200.00	90.00	0.525	7,450.00	9,064.72	40.03	9,064.71	0.00	0.00	0.00	
17,300.00	90.00	0.525	7,450.00	9,164.72	40.94	9,164.71	0.00	0.00	0.00	
17,400.00	90.00	0.525	7,450.00	9,264.72	41.86	9,264.71	0.00	0.00	0.00	
17,500.00	90.00	0.525	7,450.00	9,364.71	42.78	9,364.71	0.00	0.00	0.00	
17,600.00	90.00	0.525	7,450.00	9,464.71	43.69	9,464.71	0.00	0.00	0.00	
17,700.00	90.00	0.525	7,450.00	9,564.70	44.61	9,564.71	0.00	0.00	0.00	
17,800.00	90.00	0.525	7,450.00	9,664.70	45.53	9,664.71	0.00	0.00	0.00	
17,900.00	90.00	0.525	7,450.00	9,764.70	46.44	9,764.71	0.00	0.00	0.00	
17,952.74	90.00	0.525	7,450.00	9,817.43	46.93	9,817.45	0.00	0.00	0.00	
TD at 17952.74										

Design Targets										
Target Name	Dip Angle (°)	Dip Dir. (°)	TVD (ft)	+N/-S (ft)	+E/-W (ft)	Northing (usft)	Easting (usft)	Latitude	Longitude	
- hit/miss target										
- Shape										
Fox Creek 25-6203B LP	0.00	0.000	7,450.00	-239.73	-45.29	1,599,549.16	3,307,745.98	40° 58' 25.727 N	104° 23' 8.038 W	
- plan hits target center										
- Point										
Fox Creek 25-6203B PB	0.00	0.000	7,450.00	9,817.43	46.93	1,609,606.67	3,307,711.78	41° 0' 5.094 N	104° 23' 6.835 W	
- plan hits target center										
- Point										

<b>Database:</b>	Casper District	<b>Local Co-ordinate Reference:</b>	Well Fox Creek 25-6203B
<b>Company:</b>	HighPoint Resources	<b>TVD Reference:</b>	GL 5412' & KB 20' @ 5432.00ft
<b>Project:</b>	Weld County, CO NAD 83	<b>MD Reference:</b>	GL 5412' & KB 20' @ 5432.00ft
<b>Site:</b>	Fox Creek 25 SW Pad	<b>North Reference:</b>	True
<b>Well:</b>	Fox Creek 25-6203B	<b>Survey Calculation Method:</b>	Minimum Curvature
<b>Wellbore:</b>	OH		
<b>Design:</b>	Plan 1		

Plan Annotations				
Measured Depth (ft)	Vertical Depth (ft)	Local Coordinates		Comment
		+N/-S (ft)	+E/-W (ft)	
500.00	500.00	0.00	0.00	Start Build 2.00
750.00	749.68	-10.88	-0.68	Start 953.95 hold at 750.00 MD
1,703.95	1,700.00	-93.86	-5.84	Start DLS 2.00 TFO 0.00
2,683.48	2,642.45	-342.30	-21.29	Start 300.01 hold at 2683.48 MD
2,983.48	2,915.24	-466.91	-29.04	Start Drop -1.50
4,622.86	4,504.75	-812.67	-50.54	Start 2372.29 hold at 4622.86 MD
6,995.15	6,877.04	-812.67	-50.54	Start DLS 10.00 TFO 0.53
7,895.15	7,450.00	-239.74	-45.29	Start 10057.59 hold at 7895.15 MD
17,952.74	7,450.00	9,817.43	46.93	TD at 17952.74