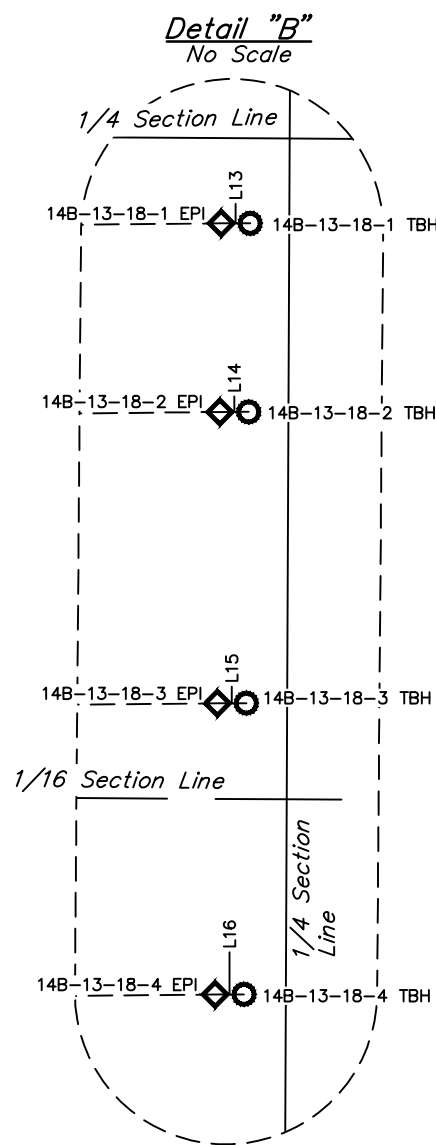
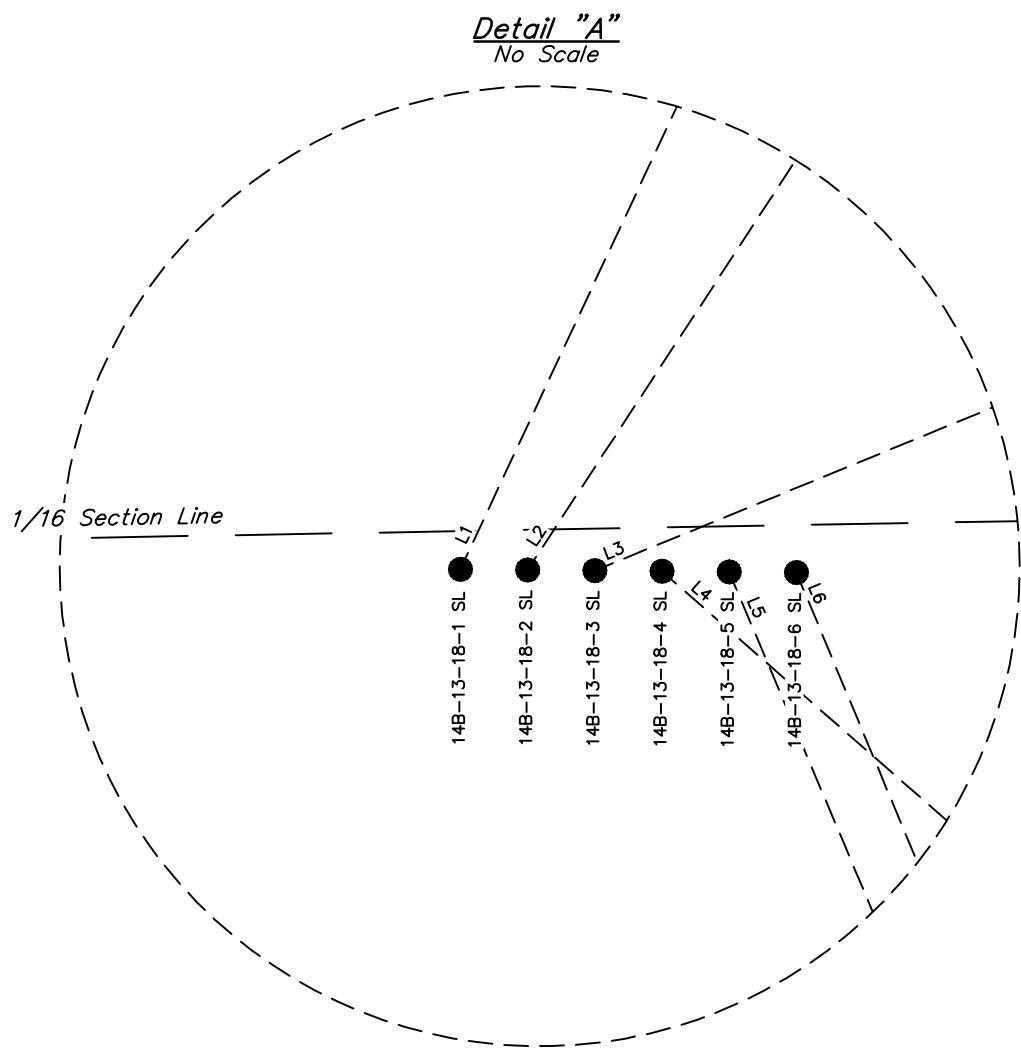
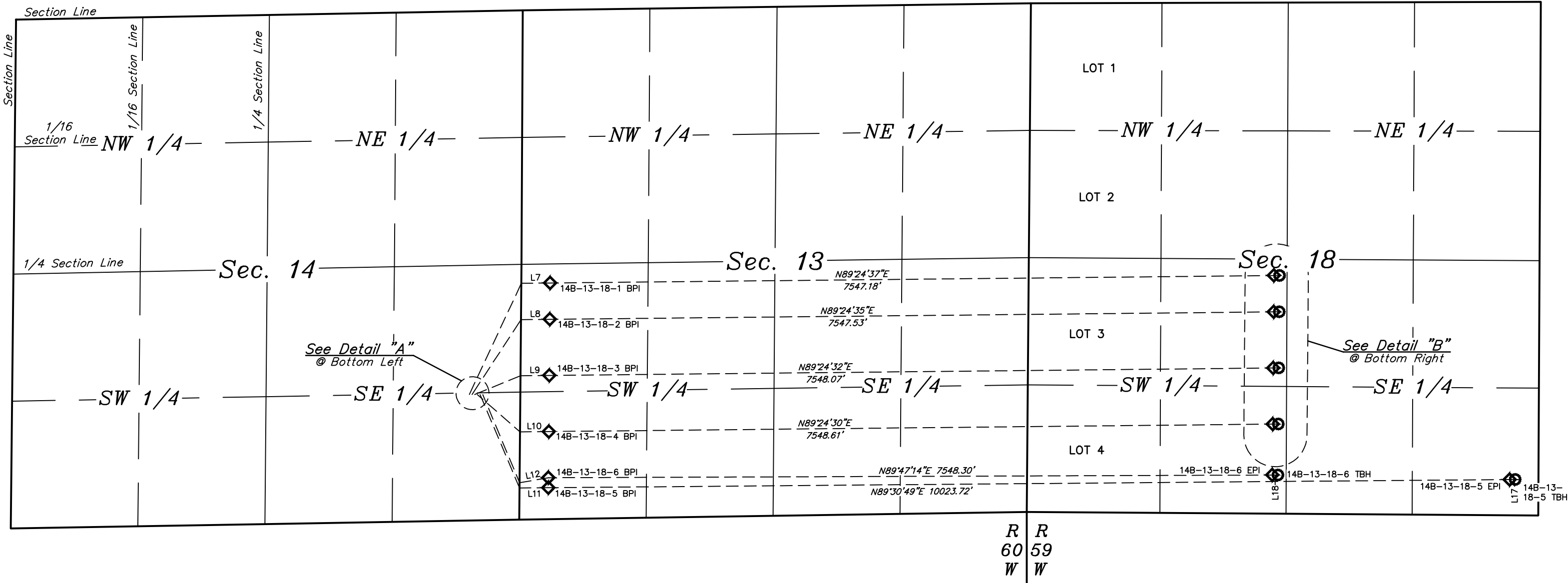




LINE TABLE		
LINE	DIRECTION	LENGTH
L1	N25°04'14"E	1280.22'
L2	N33°12'28"E	933.18'
L3	N67°42'24"E	516.44'
L4	S48°49'09"E	590.73'
L5	S22°54'43"E	1056.64'
L6	S22°40'10"E	995.94'
L7	N89°24'37"E	300.06'
L8	N89°24'35"E	300.06'
L9	N89°24'32"E	300.06'
L10	N89°24'30"E	300.06'
L11	N89°30'49"E	300.05'
L12	N80°04'35"E	305.05'
L13	N89°50'15"E	58.00'
L14	N89°50'15"E	58.00'
L15	N89°50'15"E	58.00'
L16	N89°50'15"E	58.00'
L17	N89°50'15"E	100.00'
L18	N89°50'15"E	58.00'



LEGEND:
● = SURFACE LOCATION.
◆ = PRODUCTION INTERVAL.
○ = TARGET BOTTOM HOLE.
SL = SURFACE LOCATION.
BPI = BEG. PROD. INTERVAL.
EPI = ENDING PROD. INTERVAL.
TBH = TARGET BOTTOM HOLE.

REV: 8 07-18-19 C.IVIE (SURFACE LOCATION CHANGE)

BISON OIL & GAS II

BOOMSLANG FED 8-60 14B PAD
E 1/2 SE 1/4, SECTION 14, T8N, R60W, 6th P.M.
WELD COUNTY, COLORADO

SURVEYED BY	MATTHEW MILLER, J.B.	04-05-19	SCALE
DRAWN BY	J.J.	08-16-17	1" = 1000'

MULTI-WELL PLAN

FIGURE #5



UELS, LLC
Corporate Office * 85 South 200 East
Vernal, UT 84078 * (435) 789-1017