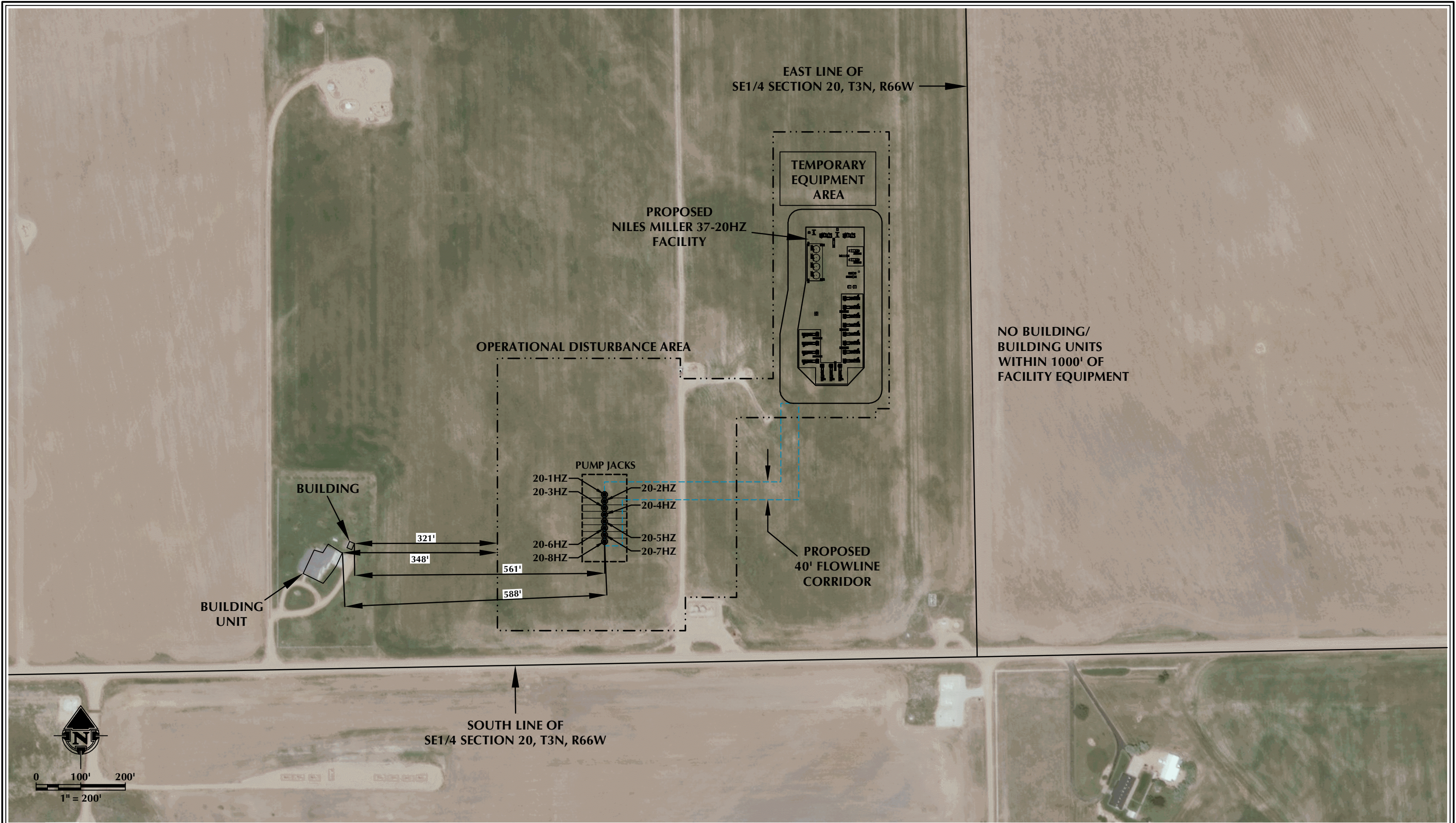


K:\ANADARKO\2017\2017\_222\_NILES\_MILLER\_T3N\_R66W\_SEC\_20\DWG\NILES\_MILLERDWG, 7/17/2019 9:13:00 AM, hayden



<p><b>NOTES:</b></p> <ol style="list-style-type: none"><li>EQUIPMENT PLACEMENT IS APPROXIMATE AND SUBJECT TO MINOR MODIFICATION DUE TO SPECIFIC CIRCUMSTANCES.</li><li>FLOWLINE CORRIDOR IS APPROXIMATE AND SUBJECT TO MINOR MODIFICATION DUE TO SPECIFIC CIRCUMSTANCES.</li></ol>	<p><b>DATA SOURCES:</b></p> <p>- AERIAL COURTESY OF ESRI, INC.</p>	<p><b>609</b> CONSULTING, LLC</p> <p>LOVELAND OFFICE 6706 North Franklin Avenue Loveland, Colorado 80538 Phone 970-776-4331</p> <p>SHERIDAN OFFICE 1095 Saberton Avenue Sheridan, Wyoming 82801 Phone 307-674-0609</p>	<p><b>Anadarko</b> Petroleum Corporation 1099 18th Street Denver, CO 80202</p>	<p>SCALE: 1" = 200'</p> <p>DATE SURVEYED: 11/30/18</p> <p>DATE: 1/24/19</p> <p>DRAFTER: DJD</p> <p>REVISED: 7/17/19</p>	<p><b>FACILITY LAYOUT AERIAL</b></p> <p><b>NILES MILLER 37-20HZ</b></p> <p><b>LOCATED IN SECTION 20, T3N, R66W, 6TH P.M.</b></p> <p><b>WELD COUNTY, COLORADO</b></p>
--	--	---	---	---	--





REFERENCE DRAWINGS			REVISIONS					
				ISSUED FOR PERMIT	MRW	07/19/18	JTK	07/19/18
				REVISED FOR PERMIT	MRW	05/02/18	JTK	05/02/18
				ISSUED FOR PERMIT	MRW	04/10/18	JTK	04/10/18
DWG. NO.	TITLE	NO.	DESCRIPTION	BY	DATE	CHK.	DATE	APPR.



DWG. No.:  
X22332-STOR-01-PP-2020 Rev 2

2020 Rev 2

SHEET No.  
- OF -