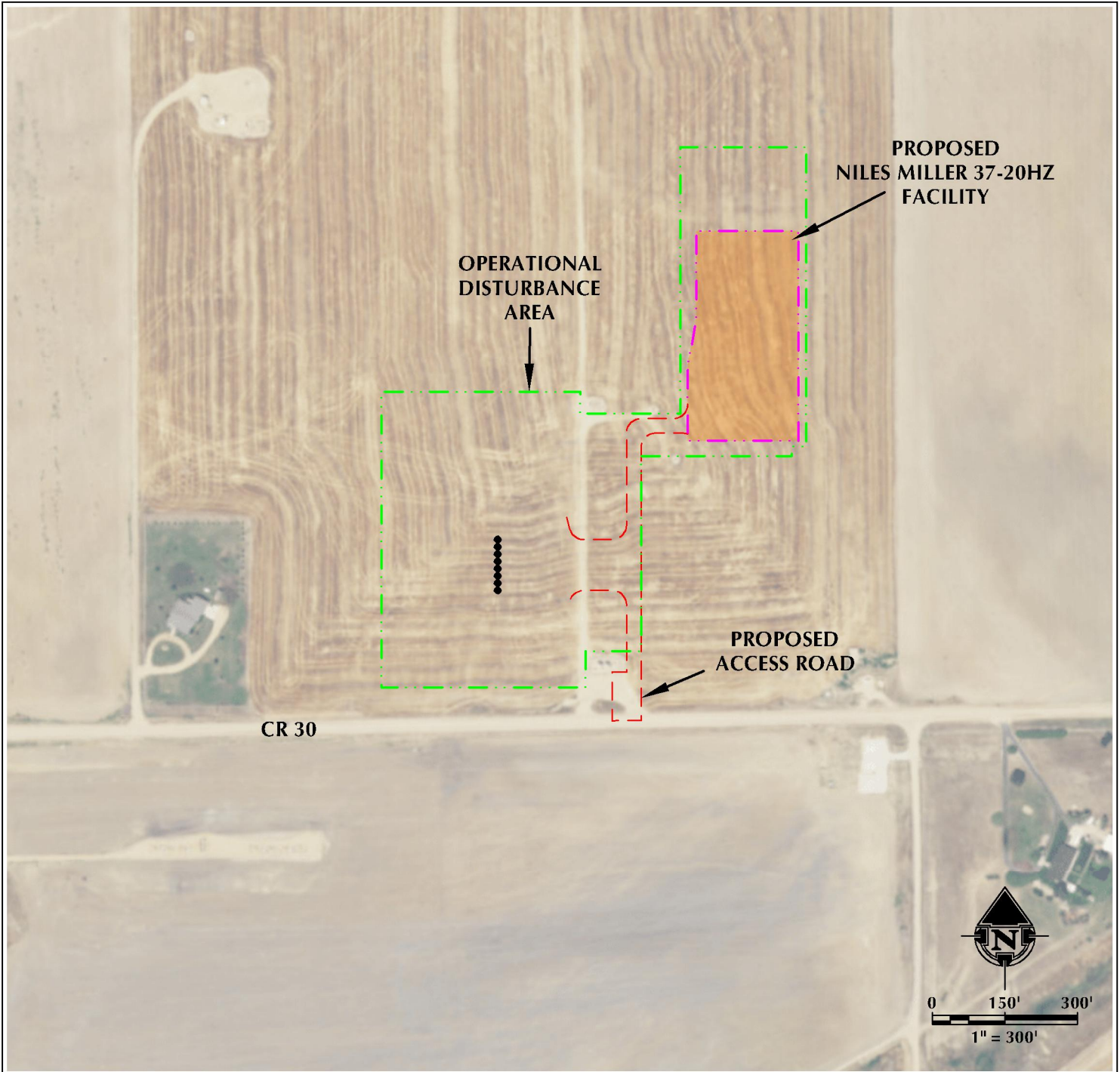


# NILES MILLER 37-20HZ ACCESS MAP

SE1/4 SE1/4 SECTION 20, TOWNSHIP 3 NORTH, RANGE 66 WEST, 6TH P.M.



## LEGEND

- PROPOSED WELL
- - - ACCESS
- - - DISTURBANCE BOUNDARY
- FACILITY PAD

INTERSECTION OF  
ACCESS ROAD AND CR 30  
LATITUDE: 40.203126°  
LONGITUDE: -104.793627°



**609 CONSULTING, LLC**  
LOVELAND OFFICE  
6706 North Franklin Avenue  
Loveland, Colorado 80538  
Phone: 970-776-4331

SHERIDAN OFFICE  
1095 Saberton Avenue  
Sheridan, Wyoming 82801  
Phone: 307-674-0609

DATE SURVEYED: 11/30/18  
DATE: 1/16/19  
DRAFTER: DJD  
REVISED: 7/17/19

DATA SOURCES:  
- AERIAL COURTESY OF ESRI, INC.

PREPARED FOR:  
**Kerr-McGee Oil & Gas Onshore L.P.**