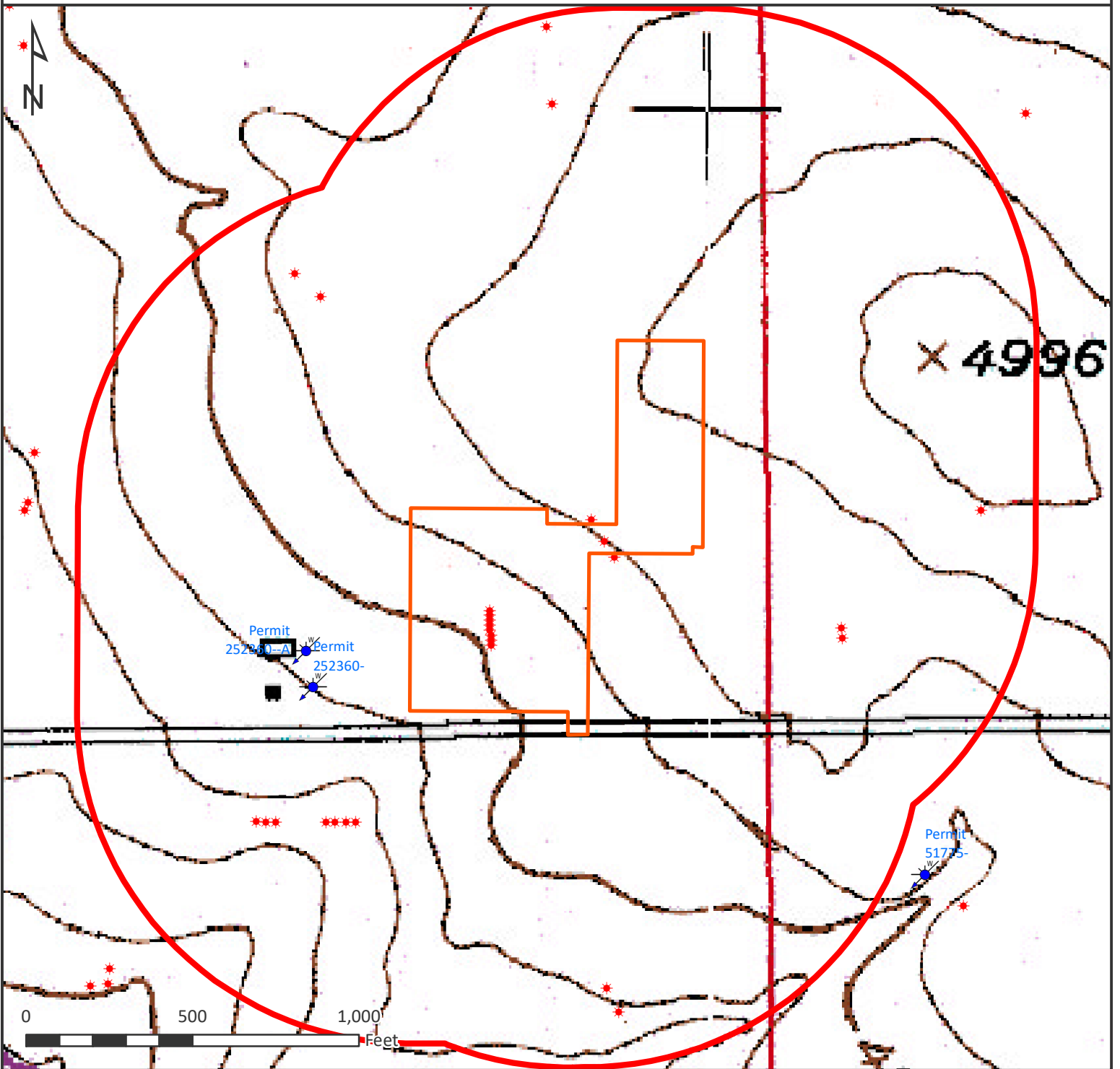


HYDROLOGY MAP NILES MILLER 37-20HZ







Nearest Surface Water Features

Pond (dry): 1550' SW Elev: 4893'

Loc Elev: 4957'

All measurements are made from
edge of disturbed area.

Legend

-  WATER WELL
-  WELL PAD (PROPOSED)
-  1000' BUFFER
-  EXISTING OIL/GAS WELL (COGCC)



Date created: 1/29/2019
 Created by: APC Regulatory GIS
 Scale: 1:5,000
 Projection: NAD83 UTM 13N